

# RYOBI®

## ORIGINAL INSTRUCTIONS **18V ONE+ Line Trimmer**

RLT1830LiX4

RLT1830LiX5

RLT1830Li13

RLT1830Li15

OLT1830



## **Important!**

It is essential that you read the instructions in this manual before assembling, operating and maintaining the product.

Subject to technical modifications.



Fig. 1

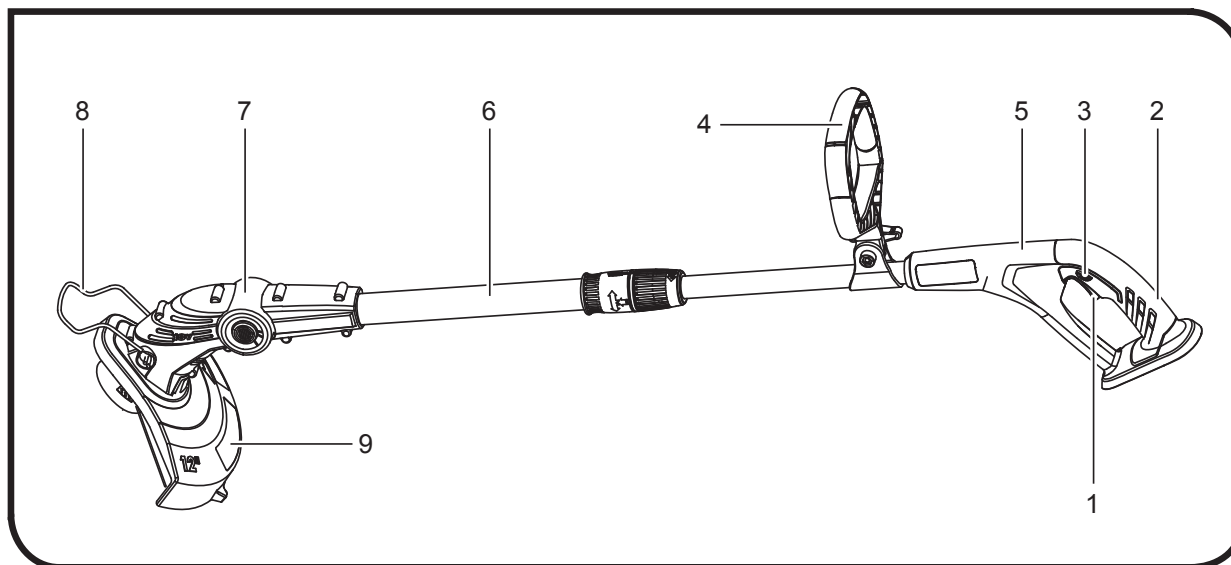


Fig. 2

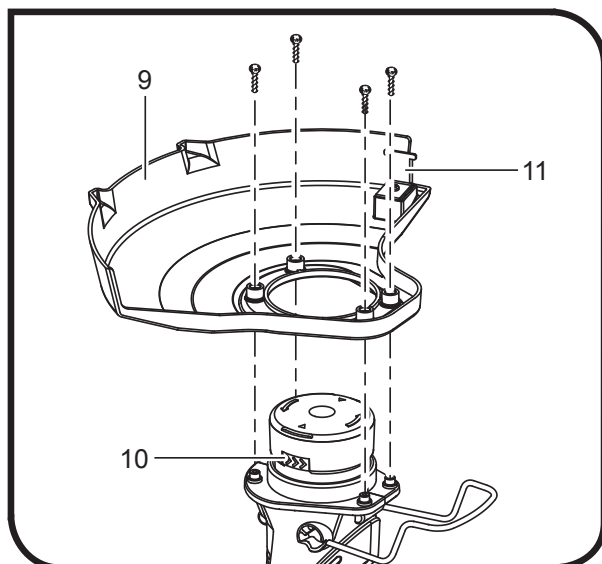


Fig. 3

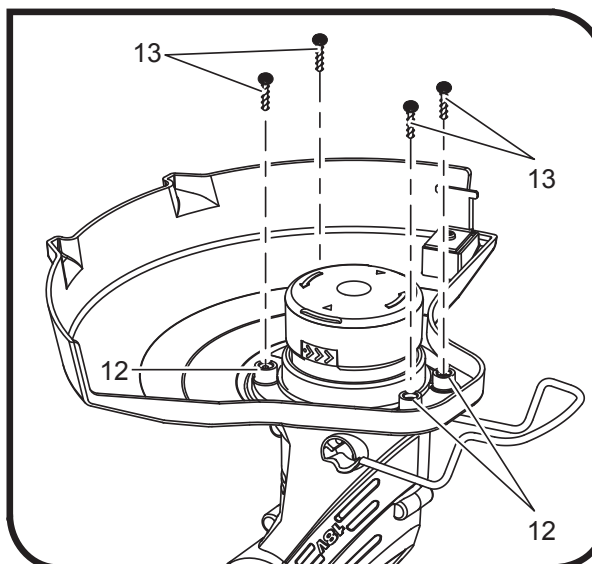




Fig. 4

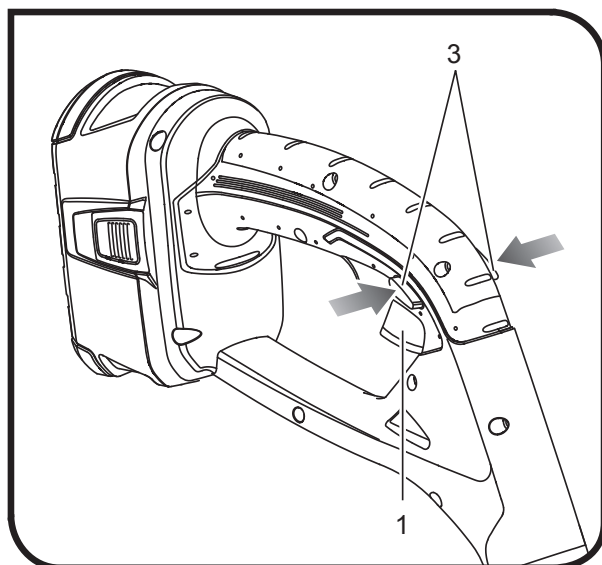


Fig. 5

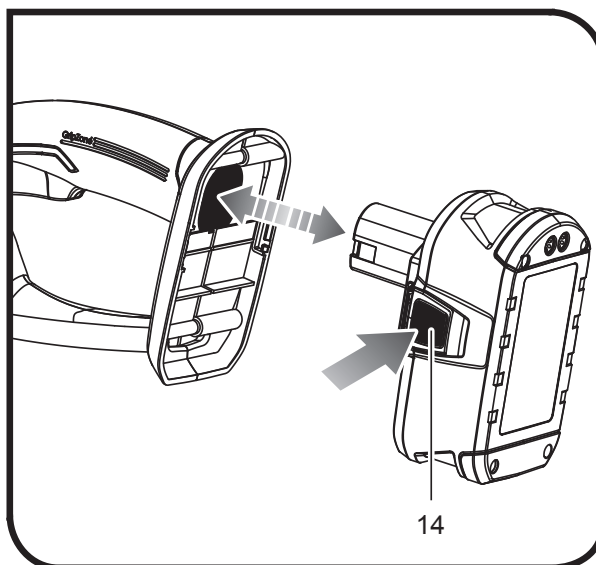


Fig. 6

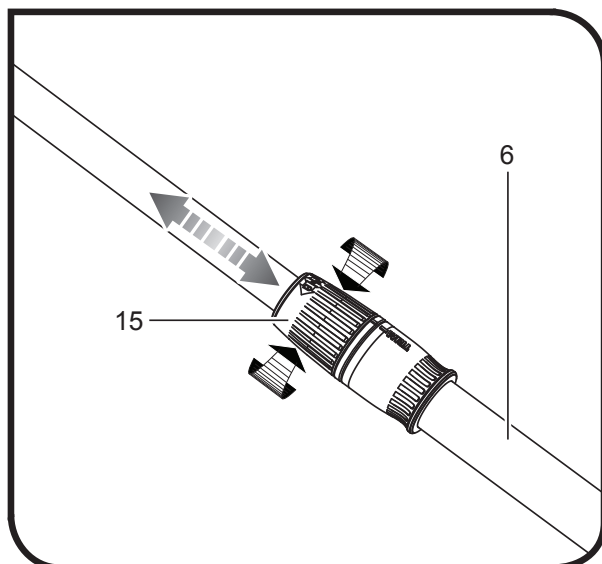


Fig. 7

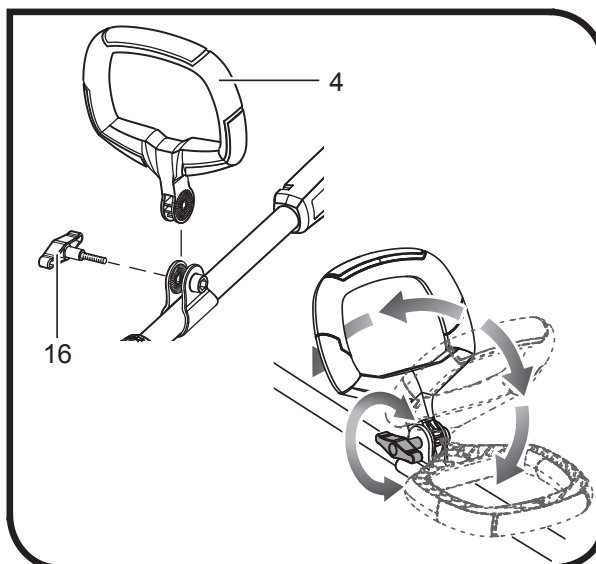




Fig. 8

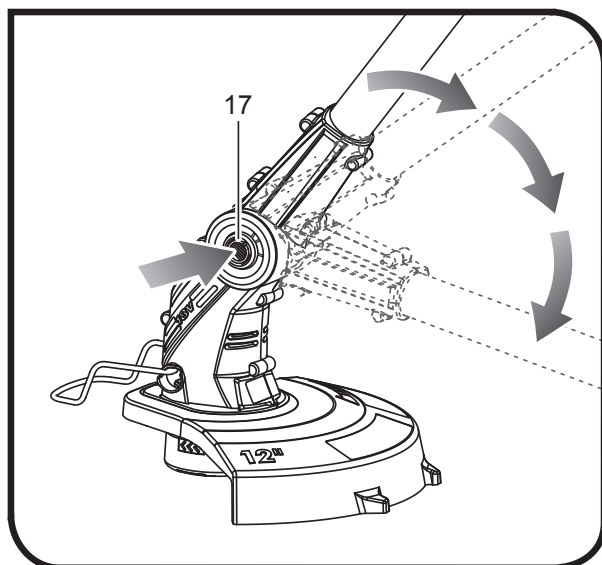


Fig. 9



Fig. 10

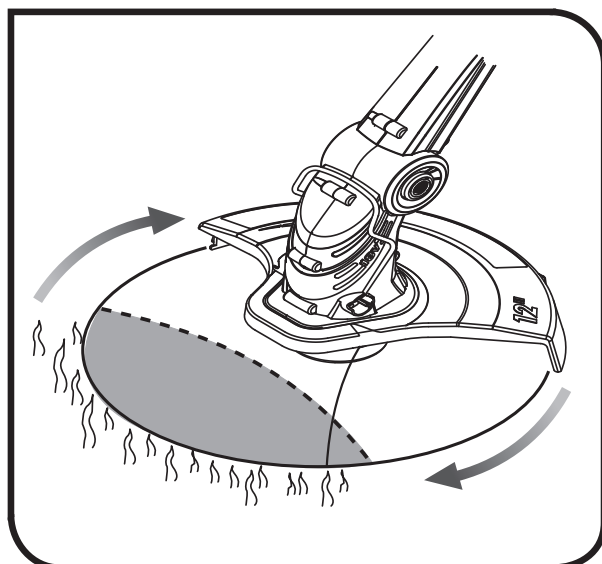


Fig. 11

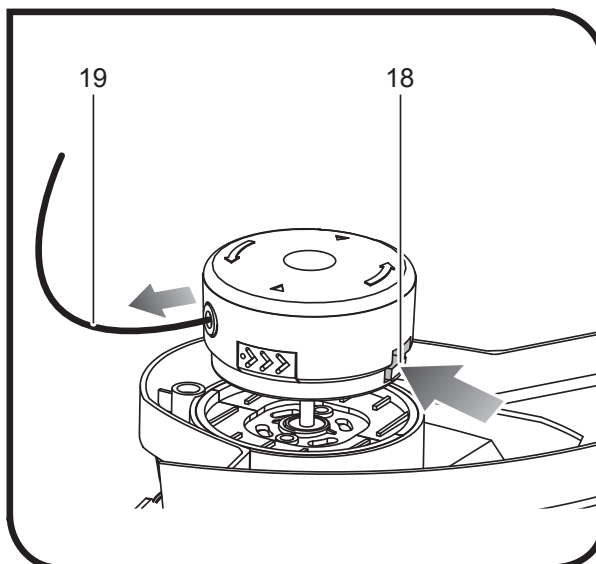




Fig. 12

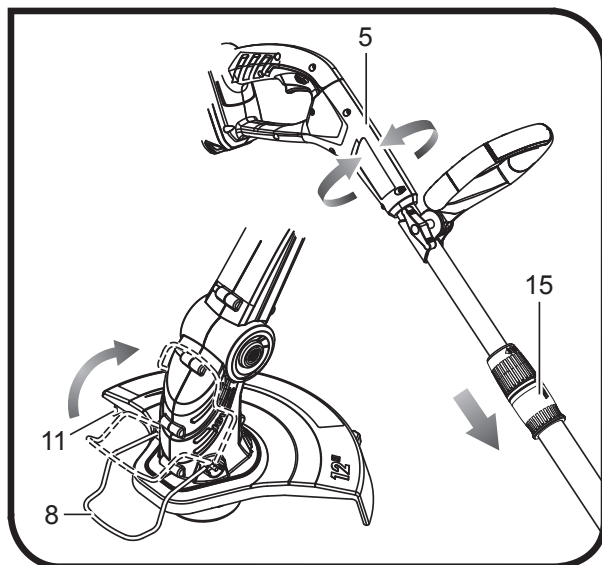


Fig. 13

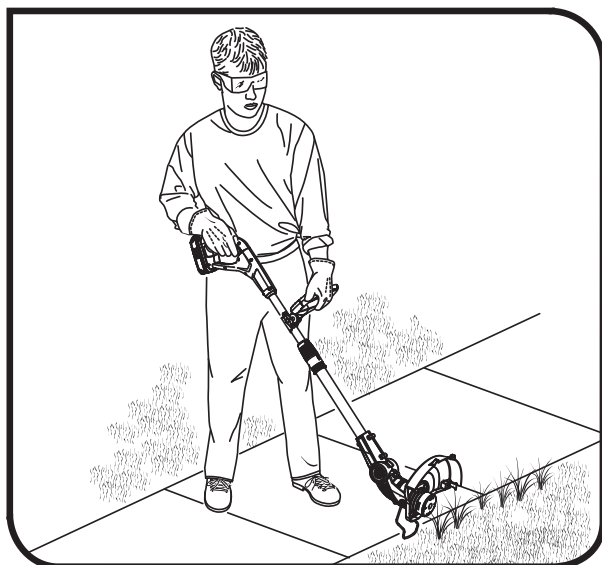


Fig. 14

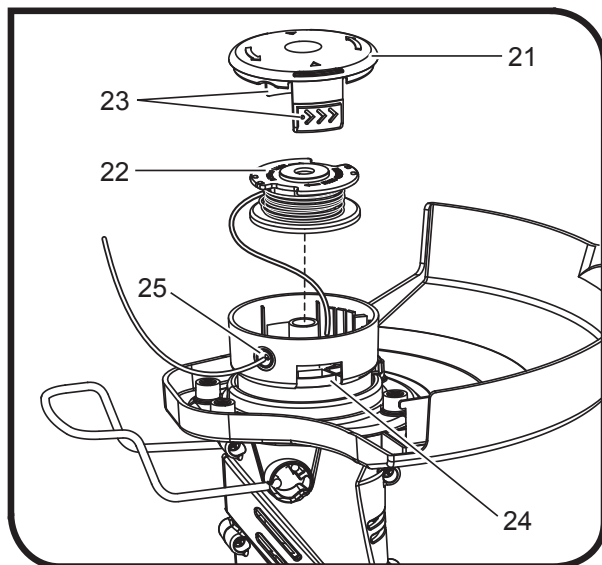
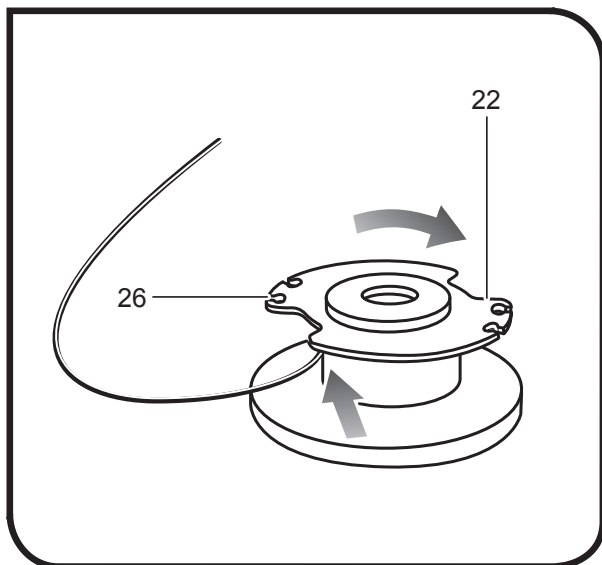


Fig. 15





## Safety

Safety, performance, and dependability have been given top priority in the design of your line trimmer/edger.

### INTENDED USE

This product is only intended for use outdoors. The product is designed for cutting grass and light weeds only in private garden areas.

#### Line trimmer

The product is intended for cutting long grass, pulpy weed, brush and similar vegetation at or about ground level.

#### Edger

The product is intended for cutting neat edges to grass lawns.

The product should not be used to cut or trim hedges, bushes or other vegetation where the cutting plane is not parallel to the ground surface.

### GENERAL SAFETY WARNINGS

#### ⚠ WARNING

When using electric gardening appliances, basic safety precautions should always be followed to reduce the risk of fire, electric shock and personal injury.

**Read all instructions before attempting to operate the product. Save all these instructions for future reference.**

- For safe operation, read and understand all instructions before using this product. Follow all safety instructions. Failure to follow all safety instructions listed below, can result in serious personal injury.
- Do not allow children or untrained individuals to use this unit.
- Check the work area before each use. Remove all objects such as rocks, broken glass, nails, wire, or string which can be thrown or become entangled in the machine.
- Always wear eye protection with side shields marked to comply with standards. Following this rule will reduce the risk of serious personal injury.
- Use safety glasses. Always wear safety glasses with side shields. Everyday glasses have only impact resistant lenses; they are not safety glasses. Following this rule will reduce the risk of eye injury.
- Protect your lungs. Wear a face or dust mask if the operation is dusty. Following this rule will reduce the risk of serious personal injury.
- Dress properly. Use of rubber gloves and substantial footwear is recommended when working outdoors. Wear heavy, long pants, long sleeves, boots, and gloves. Do not wear loose fitting clothing, short pants, sandals, or go barefoot. Do not wear jewellery of any kind.
- Secure long hair above shoulder level to prevent

entanglement in moving parts.

- Keep all bystanders, children, and pets at least 15 m away.
- Stay alert. Do not operate this unit when you are tired, ill, or under the influence of alcohol, drugs, or medication.
- Do not operate in poor lighting.
- Keep all parts of your body away from any moving part.
- Do not operate power tools in explosive atmospheres, such as in the presence of flammable liquids, gases, or dust. Power tools create sparks which may ignite the dust or fumes.
- Avoid body contact with grounded surfaces such as pipes, radiators, ranges, and refrigerators. There is an increased risk of electric shock if your body is grounded.
- Avoid dangerous environments. Don't expose the product to rain or wet conditions. Water entering an appliance or line trimmer will increase the risk of electric shock.
- Do not force the tool. Use the correct power tool for your application. The correct tool will do the job better and safer at the rate for which it was designed.
- Do not operate the product while barefoot or when wearing sandals or similar lightweight footwear. Wear protective footwear that will protect your feet and improve your footing on slippery surfaces.
- Do not overreach. Keep firm footing and balance. Overreaching can result in loss of balance.
- Avoid accidental starting. Be sure switch trigger is in the locked or off position before inserting battery pack. Carrying tools with your finger on the switch trigger or inserting the battery pack into a tool with the switch on invites accidents.
- Do not use the product if switch trigger does not turn it on or off. Any tool that cannot be controlled with the switch trigger is dangerous and must be repaired.
- Disconnect battery pack from the appliance before storing, servicing, or changing accessories such as cutting line. Such preventative safety measures reduce the risk of starting the product accidentally.
- Use only identical manufacturer's replacement parts and accessories. Use of any other parts may create a hazard or cause product damage.
- Maintain the product with care. Replace trimmer head if cracked, chipped or damaged in any way. Be sure the trimmer head is properly installed and securely fastened. Failure to do so can cause serious injury. Keep handles dry, clean and free from oil and grease.
- Check for damaged parts. Before use, carefully check any part for damage to determine that it will operate properly and perform its intended function. Check for alignment of moving parts, binding of moving parts, breakage of parts, mounting, and any other conditions that may affect its operation. A guard or other part that is damaged should be properly repaired or replaced by an authorised service dealer.





## Safety

- Make sure all guards, straps, deflectors and handles are properly and securely attached.
- Use only the manufacturer's replacement line in the cutting head. Do not use any other cutting attachment, for example, metal wire, rope, or the like. To install any other brand of cutting head to this line trimmer can result in serious personal injury.
- Never operate the product without the grass deflector in place and in good condition.
- Maintain a firm grip on both handles while trimming. Keep line trimmer head below waist level. Never cut with the line trimmer head over 70 cm or more above the ground.
- Store idle appliances indoors. When not in use, the product should be stored indoors in a dry, locked place out of the reach of children.
- Never use blades, flailing devices, wire or rope. Unit is designed for line trimmer use only. Use of any other accessories or attachments will increase the risk of injury.
- Keep the air vents clean and free of debris to avoid overheating the motor. Clean after each use.
- Stop the unit and disconnect the power source when not in use. Carry the unit with the motor stopped.
- When hanging the product, ensure that the switch trigger is not depressed.
- Battery tools do not have to be plugged into an electrical outlet; therefore, they are always in operating condition. Be aware of possible hazards when not using your battery tool or when changing accessories. Following this rule will reduce the risk of electric shock, fire, or serious personal injury.
- Do not charge battery tool in rain, or damp or wet location. Following this rule will reduce the risk of electric shock.
- Do not use battery-operated appliance in rain.
- Remove or disconnect battery before servicing, cleaning or removing material from the product.
- Use battery only with charger listed. For use with 18V nickel-cadmium and lithium-ion battery packs.
- Do not dispose of the batteries in a fire. The cell may explode. Check with local codes for possible special disposal instructions.
- Do not open or mutilate the batteries. Released electrolyte is corrosive and may cause damage to the eyes or skin. It may be toxic if swallowed.
- Do not place battery tools or their batteries near fire or heat. This will reduce the risk of explosion and possibly injury.
- Batteries can explode in the presence of a source of ignition, such as a pilot light. To reduce the risk of serious personal injury, never use any cordless product in the presence of open flame. An exploded battery can propel debris and chemicals. If exposed, flush with water immediately.
- Do not crush, drop or damage battery pack. Do not use

a battery pack or charger that has been dropped or received a sharp blow. A damaged battery is subject to explosion. Properly dispose of a dropped or damaged battery immediately.

- Exercise care in handling batteries in order not to short the battery with conducting materials such as rings, bracelets, and keys. The battery or conductor may overheat and cause burns.
- For best results, your battery tool should be charged in a location where the temperature is more than 10°C but less than 37°C. To reduce the risk of serious personal injury, do not store outside or in vehicles.
- Under extreme usage or temperature conditions, battery leakage may occur. If liquid comes in contact with your skin, wash immediately with soap and water, then neutralize with lemon juice or vinegar. If liquid gets into your eyes, flush them with clean water for at least 10 minutes, then seek immediate medical attention. Following this rule will reduce the risk of serious personal injury.
- Save these instructions. Refer to them frequently and use them to instruct others who may use this power tool. If you loan someone this power tool, loan them these instructions also.

### WARNING

Injuries may be caused, or aggravated, by prolonged use of a tool. When using any tool for prolonged periods, ensure you take regular breaks.

### ADDITIONAL SAFETY RULES

### WARNING

The product is not intended for use by persons (including children) with reduced physical, sensory or mental capabilities, or lack of experience and knowledge, unless they have been given supervision or instruction concerning use of the product by a person responsible for their safety.

Children should be supervised to ensure that they do not play with the product.

### TRANSPORTING LITHIUM BATTERIES

Transport the battery in accordance with local and national provisions and regulations.

Follow all special requirements on packaging and labelling when transporting batteries by a third party. Ensure that no batteries can come in contact with other batteries or conductive materials while in transport by protecting exposed connectors with insulating, non-conductive caps or tape. Do not transport batteries that are cracked or leaking. Check with the forwarding company for further advice.





## Safety

### FEATURES

#### KNOW YOUR PRODUCT

See Figure 1.

The safe use of this product requires an understanding of the information on the product and in this operator's manual, as well as a knowledge of the project you are attempting. Before using the product, familiarize yourself with all operating features and safety rules.

#### ADJUSTABLE FRONT HANDLE

The front handle assembly can be adjusted for ease of operation and to help prevent loss of control.

#### EDGER GUIDE

The edger guide allows the line trimmer to perform as an edger.

#### GRASS DEFLECTOR

The trimmer includes a grass deflector that helps protect from flying debris.

#### GRIPZONE™ OVERMOLD

GripZone™ overmold provides added user comfort.

#### LOCK-OUT BUTTON

The lock-out button prevents accidental starting.

#### ROTATING REAR HANDLE

The rotating rear handle can be locked in two different positions for ease of use when edging and trimming.

#### TELESCOPING BOOM

The line trimmer can be adjusted to different extension points for ease of use.

#### THREE-POSITION PIVOTING HEAD

The trimmer head can be adjusted with the pivot button.

### ASSEMBLY

#### UNPACKING

This product requires assembly.

- Carefully remove the product and any accessories from the box. Make sure that all items listed in the packing list are included.

#### ⚠ WARNING

Do not use this product if any parts on the Packing List are already assembled to your product when you unpack it. Parts on this list are not assembled to the product by the manufacturer and require customer installation. Use of a product that may have been improperly assembled could result in serious personal injury.

Inspect the product carefully to make sure no breakage or damage occurred during shipping.

- Do not discard the packing material until you have carefully inspected and satisfactorily operated the product.
- If any parts are damaged or missing, please call Ryobi Customer Service for assistance:  
AUS: 1300 361 505  
NZ: 0800 279 624

#### PACKING LIST

Line Trimmer

Grass Deflector Assembly with Screws

Front Handle Assembly

Operator's Manual

Battery (for RLT1830LiX4, RLT1830LiX5, RLT1830Li15, and RLT1830Li13 only)

Charger (for RLT1830LiX4, RLT1830LiX5, RLT1830Li15, and RLT1830Li13 only)

#### ⚠ WARNING

If any parts are damaged or missing do not operate this product until the parts are replaced. Use of this product with damaged or missing parts could result in serious personal injury.

#### ⚠ WARNING

Do not attempt to modify this product or create accessories not recommended for use with this product. Any such alteration or modification is misuse and could result in a hazardous condition leading to possible serious personal injury.

#### ⚠ WARNING

To prevent accidental starting that could cause serious personal injury, always remove the battery pack from the product when assembling parts.

### DESCRIPTION

Figure 1

1. Switch trigger
2. GripZone™ overmold
3. Lock-out button
4. Adjustable front handle
5. Rear handle
6. Telescoping boom
7. 3-Position pivoting head
8. Edger guide
9. Grass deflector

Figure 2

9. Grass deflector
10. Head spool cover
11. Line cut-off blade

Figure 3

12. Screw holes



## Safety

### 13. Screws

#### Figure 4

1. Switch trigger
3. Lock-out button

#### Figure 5

### 14. Latches

#### Figure 6

6. Telescoping boom
15. Locking coupling

#### Figure 7

### 16. Knob

#### Figure 8

### 17. Pivot button

#### Figure 11

18. Line release button
19. Line

#### Figure 12

5. Rotating rear handle
8. Edger guide
11. Line cut-off blade
15. Locking coupling

#### Figure 14

21. Spool retainer
22. Spool
23. Spool retainer lock buttons
24. Slots
25. Eyelet

#### Figure 15

22. Spool
26. Slot

## ATTACHING GRASS DEFLECTOR

See Figure 2-3.

### ⚠ WARNING

The line cut-off blade on the grass deflector is sharp. Avoid contact with the blade. Failure to avoid contact can result in serious personal injury.

- Fit the grass deflector into the slots on trimmer head.
- Line up the screw holes in the grass deflector with the holes in the trimmer head.
- Install supplied screws and tighten by turning clockwise with a Phillips screwdriver.

## OPERATION

### ⚠ WARNING

Do not allow familiarity with products to make you careless. Remember that a careless fraction of a second is sufficient to inflict serious injury.

### ⚠ WARNING

Always wear eye protection with side shields marked to comply with standards. Failure to do so could result in objects being thrown into your eyes resulting in possible serious injury.

### ⚠ WARNING

Never use blades, flailing devices, wire, or rope on this product. Do not use any attachments or accessories not recommended by the manufacturer of this product. The use of attachments or accessories not recommended can result in serious personal injury.

This product will accept Ryobi One+ 18V lithium-ion battery packs and Ryobi One+ 18V nickel-cadmium battery packs. For complete charging instructions, refer to the Operator's Manuals for your Ryobi One+ battery pack and charger models.

**NOTE:** To avoid serious personal injury, always remove the battery pack and keep hands clear of the lock-out button when carrying or transporting the tool.

## STARTING/STOPPING THE LINE TRIMMER

See Figure 4.

- To start the line trimmer, push the lock-out button to either the right or the left side, then pull the switch trigger.
- To stop the line trimmer, release the switch trigger.

## TO INSTALL BATTERY PACK

See Figure 5.

- Insert the battery pack into the product as shown.
- Make sure the latches on each side of the battery pack snap into place and the battery pack is secured before beginning operation.

## TO REMOVE BATTERY PACK

See Figure 5.

- Depress the latches on each side of the battery pack.
- Remove the battery pack.

## TELESCOPING BOOM

See Figure 6.

The boom can be extended or shortened for ease of use.

- Remove the battery pack.
- Loosen the telescoping boom locking coupler by turning it counterclockwise. Slide the boom to the desired position.
- Tighten the coupler by turning clockwise. Make sure the boom is securely tightened before reinstalling the battery pack.

## ADJUSTABLE FRONT HANDLE

See Figure 7.



## Safety

The angle of the front handle can be adjusted 180°.

- Remove the battery pack.
- Loosen and remove the wing bolt from the handle.
- Install the handle on the rear handle pole in the area indicated by the illustration.
- Adjust handle up or down, if necessary, to desired operating position.
- Reinstall the wing bolt. Tighten wing bolt to secure.

### THREE-POSITION PIVOTING HEAD

See Figure 8.

The trimmer head can be adjusted to three different positions.

- Remove the battery pack.
- Depress the pivot button and move the trimmer head up or down to one of the three positions indicated by the notches.

**NOTE:** Adjust the trimmer head to the first and second notches for trimming and edging. Adjust to the third notch for storage only.

- Make sure the trimmer head is securely locked into place before reinstalling the battery pack.

### OPERATING THE TRIMMER

See Figure 9.

Follow these tips when using the product:

- Hold the product with your right hand on the rear handle and your left hand on the front handle.
- Keep a firm grip with both hands while in operation.
- The product should be held at a comfortable position with the rear handle about hip height.
- Cut tall grass from the top down. This will prevent grass from wrapping around the boom housing and line head which may cause damage from overheating.

If grass becomes wrapped around the cutting head:

- Remove the battery pack from the trimmer.
- Remove the grass

#### WARNING

Always hold the product away from the body, keeping clearance between the body and the product. Any contact with the cutting head of the product while in use can result in serious personal injury.

### CUTTING TIPS

See Figure 10.

- Keep the trimmer tilted toward the area being cut; this is the best cutting position.
- The line trimmer cuts when passing the unit from left to right. This will avoid throwing debris at the operator. Avoid cutting in the dangerous area shown in figure 10.
- Use the tip of the line to do the cutting. Do not force cutting head into uncut grass.

- Do not allow cutting head to contact the ground.
- Wire and picket fences cause extra line wear, even breakage. Stone and brick walls, curbs, and wood may wear cutting line rapidly.
- Avoid trees and shrubs. Tree bark, wood moldings, siding, and fence posts can easily be damaged by the line.

### ADVANCING LINE

**NOTE:** The trimmer is equipped with an auto-feed head. Bumping the head to try to advance the line will damage the trimmer and void the warranty.

- With the trimmer running, release the switch trigger.
- Wait several seconds till the head almost stops turning, and press the switch trigger.

**NOTE:** The line will extend approximately 6mm. With each stop and start of the switch trigger until the string reaches the length of the grass deflector cut-off blade.

- Resume trimming.

### ADVANCING THE LINE MANUALLY

See Figure 11.

- Remove the battery pack.
- Push the black button located on the cutting head while pulling on line to manually advance the length.

### LINE CUT-OFF BLADE

See Figure 12.

This trimmer is equipped with a line cut-off blade on the grass deflector. For best cutting, advance the line until it is trimmed to length by the line cut-off blade. Advance the line whenever you hear the engine running faster than normal, or when trimming efficiency diminishes. This will maintain best performance and keep line long enough to advance properly.

### ROTATING REAR HANDLE

See Figure 12.

The rotating rear handle is used in combination with the edger guide.

- Remove the battery pack.
- Push down on the edging coupler and turn handle end clockwise until the edging coupler locks into place.
- Release the edging coupler.

### EDGING

See Figures 12 - 13.

- Remove the battery pack.

Rotate the shaft when using the edger guide for edging sidewalks and walkways. To use the edger guide, flip down from its stored position.

Always hold the line trimmer away from the body keeping clearance between the body and the line trimmer. Any contact with the line trimmer cutting head while operating can result in serious personal injury.



## Safety

### WARNING

When servicing, use only identical replacement parts. Use of any other parts may create a hazard or cause product damage.

### WARNING

Always wear eye protection with side shields marked to comply with standards. Failure to do so could result in objects being thrown into your eyes resulting in possible serious injury.

### WARNING

To avoid serious personal injury, always remove the battery pack from the tool when cleaning or performing any maintenance.

## GENERAL MAINTENANCE

Before each use, inspect the entire product for damaged, missing, or loose parts such as screws, nuts, bolts, caps, etc. Tighten securely all fasteners and caps. Do not operate this product until all missing or damaged parts are replaced. Please call Ryobi Customer Service or contact an authorized service center for assistance.

Avoid using solvents when cleaning plastic parts. Most plastics are susceptible to damage from various types of commercial solvents and may be damaged by their use. Use clean cloths to remove dirt, dust, oil, grease, etc

### WARNING

Do not at any time let brake fluids, gasoline, petroleum based products, penetrating oils, etc., come in contact with plastic parts. Chemicals can damage, weaken or destroy plastic which may result in serious personal injury.

Only the parts shown on the parts list are intended to be repaired or replaced by the customer. All other parts should be replaced at an authorised service centre.

## BATTERY PACK REMOVAL AND PREPARATION FOR RECYCLING

### WARNING

Upon removal, cover the battery pack's terminals with heavy-duty adhesive tape. Do not attempt to destroy or disassemble battery pack or remove any of its components. Lithium-ion and nickel-cadmium batteries must be recycled or disposed of properly. Also, never touch both terminals with metal objects and/or body parts as short circuit may result. Keep away from children. Failure to comply with these warnings could result in fire and/ or serious injury.

## SPOOL REPLACEMENT

See Figure 14.

Use original manufacturer's replacement spool.

- Remove the battery pack.
- Push in tabs on side of spool retainer.
- Pull spool retainer up to remove.
- Remove the old spool.
- To install the new spool, make sure the line is captured in the slot on the new spool. Make sure the end of the line is extended approximately 15cm. beyond the slot.
- Install the new spool so that the line and slot align with the eyelet in the cutting head. Thread the line into the eyelet.
- Pull the line extending from the cutting head so the line releases from the slot in the spool.
- Reinstall the spool retainer by depressing tabs into slots and pushing down until spool retainer clicks into place.

## LINE REPLACEMENT

See Figure 14-15.

- Use only round type 1.65 mm monofilament line.
- Remove the battery pack.
- Remove the spool from the cutting head.

**NOTE:** Remove any old line remaining on the spool.

- Cut a piece of line approximately 2.7 m long. Use only 1.65mm monofilament line.
- Insert the line into the anchor hole in the upper part of the spool. Neatly (do not cross) wind the line around the upper part of the spool clockwise, as shown by the arrows on the spool. Place line in the slot on upper spool flange, leaving about 15 cm extended beyond the slot. Do not overfill. After winding the line, there should be at least 6 mm between the wound line and the outside edge of the spool.
- To replace the plastic retainer, spool, and the spool retainer, refer to Spool Replacement earlier in this manual.

## STORING THE PRODUCT

- Remove the battery pack from the product before storing.
- Clean all foreign material from the product.
- Store it in a place that is inaccessible to children.
- Keep away from corrosive agents such as garden chemicals and de-icing salts.

## ENVIRONMENTAL PROTECTION



Recycle raw materials instead of disposing of as waste. The machine, accessories and packaging should be sorted for environmental-friendly recycling.



## Safety

### SYMBOL



Safety alert



Please read the instructions carefully before starting the machine.



Wear ear protection.



Wear eye protection.



Remove the battery pack before starting any work on the product.



Beware of thrown or flying objects. Keep all bystanders at least 15 m away.



Beware of thrown or flying objects. Keep bystanders a safe distance away from the machine.



Keep hands away from cut-off blade



Do not install or use any type of blade on a product displaying this symbol.



Avoid using in wet or damp conditions.



Guaranteed sound power level.



Waste electrical products should not be disposed of with household waste. Please recycle where facilities exist. Check with your Local authority or retailer for recycling advice.



CAUTION:

Indicates a potentially hazardous situation, which, if not avoided, may result in minor or moderate injury.

CAUTION:

(Without Safety Alert Symbol) Indicates a situation that may result in property damage.

The following signal words and meanings are intended to explain the levels of risk associated with the product.

SYMBOL	SIGNAL	MEANING
	DANGER:	Indicates an imminently hazardous situation, which, if not avoided, will result in death or serious injury.
	WARNING:	Indicates a potentially hazardous situation, which, if not avoided, could result in death or serious injury.

## PRODUCT SPECIFICATIONS

Model	RLT1830LiX4 / RLT1830LiX5 / RLT1830Li13 / RLT1830Li15 / OLT1830
Voltage	18 Volts
Cutting capacity	305 mm
Cutting line diameter	1.65 mm
Weight (without battery)	2.3 kg

## BATTERY AND CHARGER

Model	RLT1830LiX4	RLT1830LiX5	RLT1830Li13	RLT1830Li15	OLT1830
Battery pack	RB18L40	RB18L50	RB18L13	RB18L15	Not included
Charger	BCL14181H	BCL14181H	BCL14181H	BCL14181H	Not included
Compatible battery packs	ABP1801 / ABP1802 / BPL-1820 / BPL-1815 / BPL-1820G / RB18L13 / RB18L15 / RB18L26 / RB18L40 / RB18L50				
Compatible charger	BCL-1800 / BCL1418 / BCL14181H / BCL14183H (for all compatible battery packs) ACR-1800 (only for ABP1801 / ABP1802)				

## TROUBLESHOOTING

Problem	Possible cause	Solution
Line will not advance when using the auto-feed head.	Line is welded to itself.	Lubricate with silicone spray.
	Not enough line on spool.	Install more line. Refer to Line replacement earlier in this manual.
	Line is worn too short.	Pull line while pressing the black button located on the cutting head.
	Line is tangled on spool.	Remove line from spool and rewind. Refer to <b>Line Replacement</b> earlier in this manual.
Grass wraps around boom housing and cutting head.	Cutting tall grass at ground level.	Cut tall grass from the top down to prevent wrapping.
Motor fails to start when switch trigger is depressed.	Battery is not secure.	To secure the battery pack, make sure the latches on each side of the battery pack snap into place.
	Battery is not charged.	Charge the battery pack according to the instructions included with your model.





**Techtronic Industries (Australia) Pty. Ltd.**  
31 Gilby Road,  
Mt Waverley, VIC 3149, Australia

**Techtronic Industries New Zealand Ltd.**  
2 Landing Drive, Auckland Airport,  
Mangere, New Zealand 2022