

oricom®

TPMC-2E



WARNING THIS PRODUCT CONTAINS BUTTON/COIN CELL BATTERIES
Button/coin cell batteries are hazardous and must be kept out of reach of children at all times, whether the battery is new or used. These batteries can cause severe or fatal injuries in 2 hours or less if swallowed or placed inside any part of the body. If it is suspected a button/coin cell battery has been swallowed or placed inside any part of the body, seek medical attention immediately or contact the Australian Poisons Information Centre on 131126 for 24/7 fast, expert advice.

User Manual



PPI0590R/B



Contents

Key Features	01
Disclaimer	01
Pack Includes	02
Product Overview	03
Display Installation (Handlebar mounting)	04
Display Installation (Stick on mounting)	05
Sensor Installation	06
Sensor Battery Replacement	07
Alerts	08
Sensor Programming	09
Parameter Setting	10
Functional Test After Installation	11
Specifications	12
Troubleshooting	13
Express Warranty (Australia)	13

Key Features

- 24/7 Monitoring
- Quick fix/release display design
- Adjustable threshold value of individual tyres
- DIY installation
- All-at-a-glance display

Disclaimer

- A tyre Pressure Monitoring System (TPMS) is designed for monitoring tyre pressures
- Rider should react promptly if the TPMC-2E dash unit alerts the rider of low tyre pressure
- All sensors are pre-programmed from factory

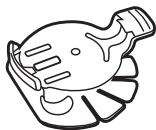
Rider Distraction Warning

- A rider should always operate a motorbike in a safe manner.
Minimising the amount of time spent viewing the display will prevent distraction.
- The display unit should be installed securely in a position that doesn't obstruct the riders view of the road.
- Do not install the display unit in a position that may hinder the motorbikes operating controls.

Pack Includes



Display **X1**



Adhesive Holder **X1**



Clamp **X1**



User Manual **X1**



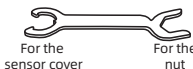
Sensor **X2**



Washer **X3**
(1 spare)



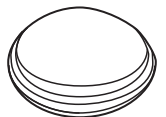
Nut **X3**
(1 spare)



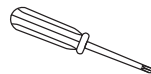
Spanner **X1**



Dust Cover **X2**



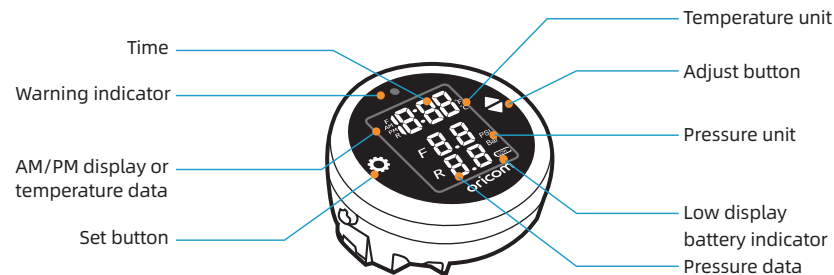
Accessories & Display Case **X1**



Screwdriver **X1**

★ The above graphics are for reference only

Product Overview



AAA battery
(Not included)



Battery cover



Screw

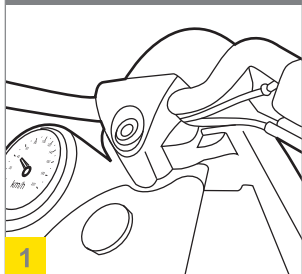


Notes:

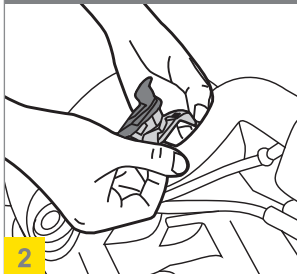
- Press "◆" button for 4 seconds to turn off the display
- Press any button for 2 seconds to turn on the display.
- Press "◆" button once to switch between tyre temperature or time display
- Unit will alarm if pressure varies from nominal value by 30%. E.g. Front tyre default is 36PSI. If front tyre pressure <25 or >46 psi, unit will alarm.

Display Installation (Handlebar mounting)

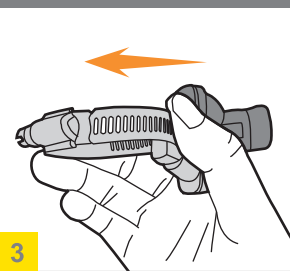
Identify mounting position



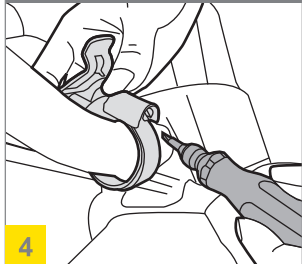
Loosen supplied clamp and mount around handlebar



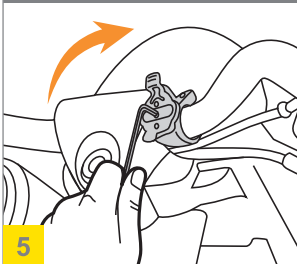
Ensure screw thread lines up with slots in clamp when tightening



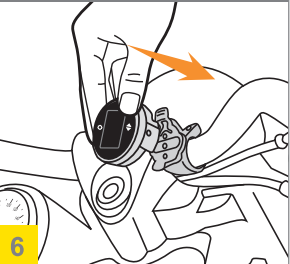
Tighten clamp screw



Adjust angle of display holder for optimum viewing and tighten with 5mm hex key

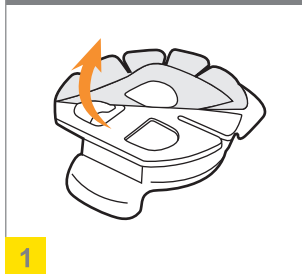


Clip on the display and turn on.

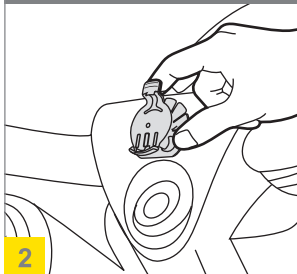


Display Installation (Stick on mounting)

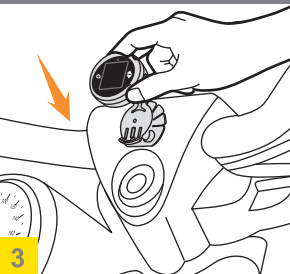
Remove protective backing from double sided tape on the back of the holder



Mount the holder in your preferred position.

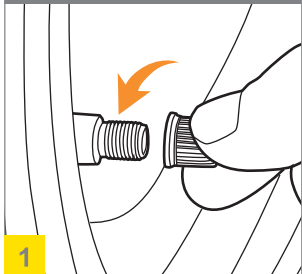


Clip on the display and turn on

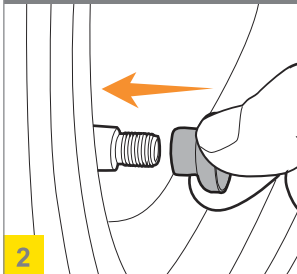


Sensor Installation

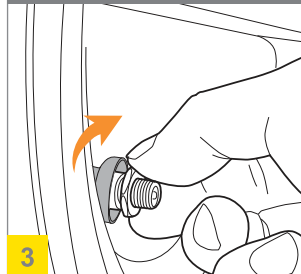
Unscrew the valve cap



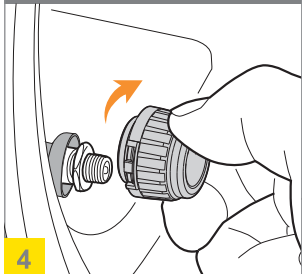
Insert the dust cover into the valve stem



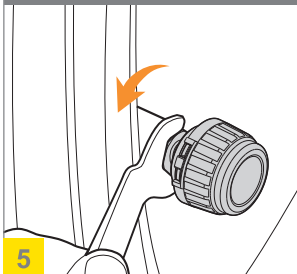
Screw on the nut



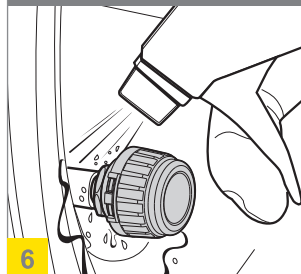
Screw on the sensor



Tighten up the nut to the sensor with the supplied spanner

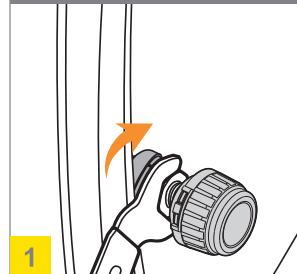


Check air leakage by spraying soapy water

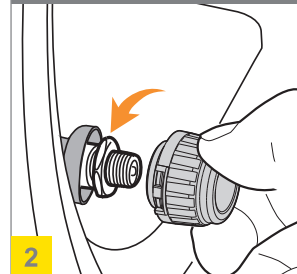


Sensor Battery Replacement

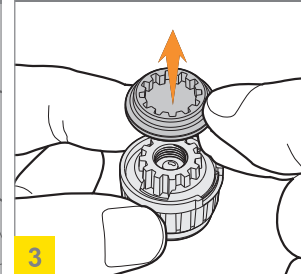
Unscrew the nut



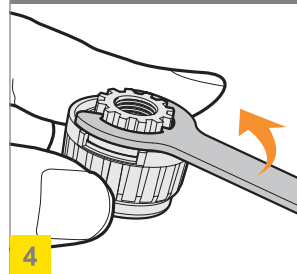
Unscrew the sensor



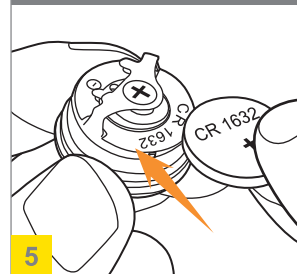
Take out the washer



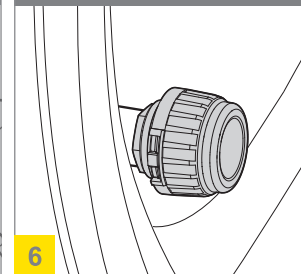
Unscrew the sensor cover using the supplied spanner



Remove and replace with new battery



Follow the "sensor installation" steps above

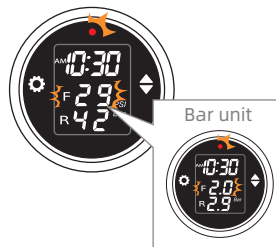


WARNING THIS PRODUCT CONTAINS BUTTON/COIN CELL BATTERIES
Button/coin cell batteries are hazardous and must be kept out of reach of children at all times, whether the battery is new or used. These batteries can cause severe or fatal injuries in 2 hours or less if swallowed or placed inside any part of the body. If it is suspected a button/coin cell battery has been swallowed or placed inside any part of the body, seek medical attention immediately or contact the Australian Poisons Information Centre on 13126 for 24/7 fast, expert advice.

Alerts

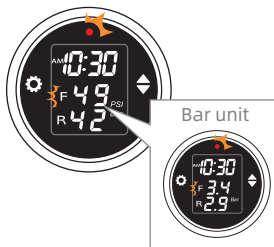
Leakage

Fast leak: Bi--Bi--
Slow leak: Bi-Bi-



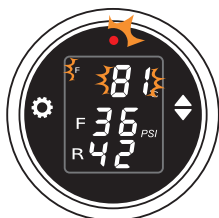
High/ Low pressure

Bi-Bi-Bi-



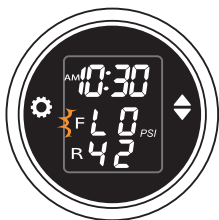
High temperature

Bi-Bi-



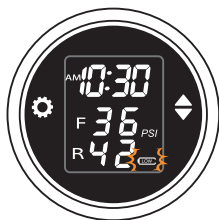
Sensor low battery

Bi-Bi-



Display low battery

Bi-Bi-



Sensor failure

Bi---

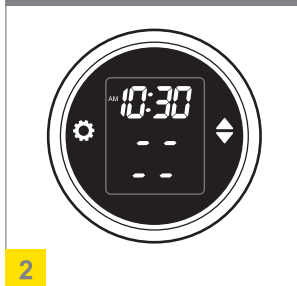


Sensor Programming (Reminder: All sensors are already programmed)

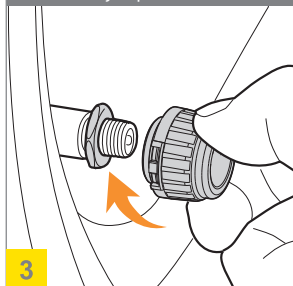
Press the "⚙️" button 5 times, display will "Beep" once and enter programming mode.



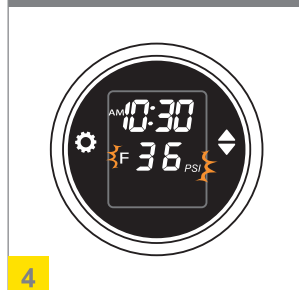
Press "⬆️" button to select front or rear tyre



Screw new sensor onto the corresponding tyre, deflate tyre slightly, display should now show the tyre pressure



Once tyre pressure shows on the corresponding tyre data position, press "⚙️" button to save



Press "⬆️" button to program the next sensor

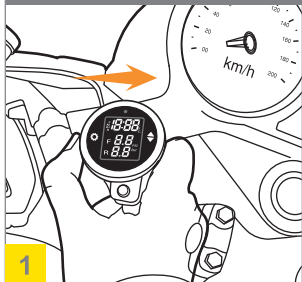


Press and hold "⚙️" button to save and exit programming mode, the display will beep twice to confirm.



Parameter Setting

Press and hold "⚙️" button for 4 seconds, the display will "Beep" once to enter settings



1

Settings Menu
(Press "⚙️" button to select)

- Pressure unit (PSI/Bar)
- Temperature unit ("F"/"C")
- Front Tyre nominal value
- Rear Tyre nominal value
- High temperature value
- AM/PM
- Hour setting
- Minute setting

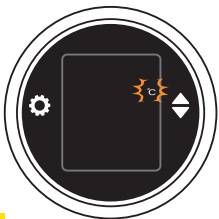
2

Press "⬆️" button to select the pressure unit. Press "⚙️" button to save and enter the next setting



3

Press "⚙️" button to select the temperature unit. Press "⬆️" button to save and enter the next setting



4

Press "⬆️" button to adjust the front tyre nominal value. Press "⚙️" button to save and enter the next setting



5

Press "⬆️" button to adjust the rear tyre nominal value. Press "⚙️" button to save and enter the next setting



6

Parameter Setting

Press "⬆️" button to select the high temperature value. Press "⚙️" button to save and enter the next setting



7

Press "⬆️" button to select the am/ pm format. Press "⚙️" button to save and enter the next setting



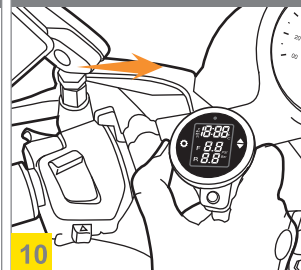
8

Press "⬆️" button to enter hour setting. Press "⚙️" button to enter minute setting



9

Press and hold "⚙️" button for 3 seconds, display will "Beep" twice to save and exit the settings

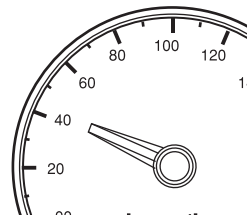


10

Functional Test After Installation

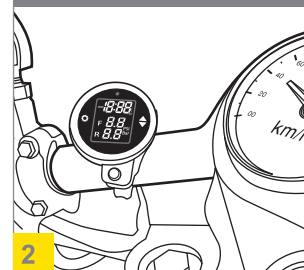
Display will show real time tyre data automatically when the speed is over 20km/h (12.4MPH)

>20 km/h



1

Installation is complete when tyre data is received from both tyres.



2

Specifications

Sensor:

Operating frequency: 433.92±0.015MHz

Operating voltage: 2.0V~3.3V

Operating temperature: -20°C~+80°C/
-4°F~+176°F

Pressure range: 0~5Bar / 0~72PSI

Display:

Operating frequency: 433.92±0.015MHz

Operating current: ≤3.5mA

Static current: ≤50uA

Operating voltage: 1.5~3.3V

Operating temperature: -20°C~+70°C/
-4°F~+158°F

Battery type: AAA x 2

Default:

Pressure unit: PSI

High temperature value: 80°C/176°F

Default front tyre:

Nominal value: 2.5Bar / 36PSI

High pressure value: 3.2Bar / 46PSI

Low pressure value: 1.8Bar / 25PSI

Default rear tyre:

Nominal value: 2.6Bar / 38PSI

High pressure value: 3.3Bar / 48PSI

Low pressure value: 1.8Bar / 26PSI

Range of adjustable settings:

Minimum pressure: 1.0~3.5Bar / 14~15PSI

High temperature: +50°C~+90°C
+122°F~+194°F

Monitor:

Pressure range: 0~4.5Bar / 0~65PSI

Precision:

Temperature: ±3°C / ±5°F

Pressure: ±0.1Bar / ±2PSI

Notes:

High pressure value is 30% over nominal value

Low pressure value is 30% below nominal value

Air pressure unit:

1 Bar = 14.5 PSI = 100KPa = 1.02Kgf / cm²

Troubleshooting

1. After sensor installation, air leaking at valve.

The tyre valves may not be universal standard, please check with the local workshop.

2. Once the installation is done, there is no tyre pressure data shown on display

Make sure the display is turned on and sensors are programmed correctly, if needed reprogram sensors.

3. Sensor signal drops out

Reset sensors (press and hold both buttons) reprogram sensors.

4. Sensor battery is low

Please replace the CR1632 battery.

5. Display battery is low

Please replace with two new AAA batteries.

Button/coin batteries can still pose a threat when old or spent. It is important to safely dispose of them immediately to prevent accidental ingestion or harm.

Current recycling advice recommends the following:

Place sticky tape around both sides of the battery to prevent contact with metal objects.

Secure the battery out of reach of children to avoid accidental access.

Take the battery to your nearest recycling facility for proper disposal.

By following these steps, you help ensure safe and environmentally responsible disposal.

Express Warranty (Australia)

This Express Warranty is provided by Oricom International Pty Ltd ABN 46 086 116 369, Unit 1, 4 Sovereign Place, South Windsor NSW 2756, herein after referred to as "Oricom".

Oricom warrants that the product is free from defects in materials or workmanship during the Express Warranty Period. This Express Warranty does not extend to any product from which the serial number has been removed or was purchased outside of Australia.

The benefits of this Express Warranty are in addition to other rights and remedies you may have under the Australian Consumer Law. Our goods come with guarantees that cannot be excluded under the Australian Consumer Law. You are entitled to a replacement or refund for a major failure and compensation for any other reasonably foreseeable loss or damage. You are also entitled to have the goods repaired or replaced if the goods fail to be of acceptable quality and the failure does not amount to a major failure. In the event of a minor failure, Oricom reserves the right to choose to repair or replace the product.

The Express Warranty Period will be a period of 12 Months beginning on the date of purchase of the product evidenced by your dated sales receipt. You are required to provide proof of purchase as a condition of receiving Express Warranty services.

You are entitled to a replacement product or repair of the product at our discretion according to the terms and conditions of this document if your product is found to be faulty within the Express Warranty

Period. This Express Warranty extends to the original purchaser only and is not transferable.

Products distributed by Oricom are manufactured using new materials or new and used materials equivalent to new in performance and reliability. Spare parts may be new or equivalent to new. Spare parts are warranted to be free from defects in material or workmanship for thirty (30) days or for the remainder of the Express Warranty Period of the Oricom branded product in which they are installed, whichever is longer. During the Express Warranty Period, Oricom will where possible repair and if not replace the faulty product or part thereof. All component parts removed under this Express Warranty become the property of Oricom. In the unlikely event that your Oricom product has a recurring failure, Oricom may always, subject to the Competition and Consumer Act 2010, at its discretion, elect to provide you with a replacement product of its choosing that is at least equivalent to your product in performance.

No change to the conditions of this Express Warranty is valid unless it is made in writing and signed by an authorised representative of Oricom.

Oricom will not be liable under this Express Warranty, and to the extent permitted by law will not be liable for any defect, loss, damage or injury arising out of or in connection with a:

1. Failure by you to adhere to the warnings and follow the instructions set out in this user guide for the proper installation and use of the product;

2. Willful misconduct or deliberate misuse by you of the product;
3. Any external cause beyond our control, including but not limited to power failure, lightning or over voltage;
- or
4. Modification to the product or services carried out on the product by anyone other than Oricom or Oricom's authorised service provider.

How to make a claim under your Express Warranty in Australia

Oricom has a simple warranty process for you to follow:

- Please call or email our Customer Support Team, 02 4574 8888 or support@oricom.com.au.
- A Customer Support Team member will verify after troubleshooting with you if your product qualifies under warranty. If so, they will give you a Product Return Authorisation number.
- We will then email a Return Authorisation form and a Repair Notice (if necessary), together with instructions on how to return the product for warranty service.

Please note that if a Customer Support Team member advises that your product does not qualify for return, this warranty does not apply to your product. Products that are authorised to be returned to Oricom in Australia must include all of the following:

- A completed Return Authorisation form
- A copy of your Proof of Purchase (please keep your original copy)
- The faulty product, including all accessories.

Send the approved returns to:
Oricom International Pty Ltd
Locked Bag 658
South Windsor NSW 2756 Australia

Please note that this Express Warranty excludes expenses incurred by you in returning any faulty product to us. You must arrange and pay any expenses incurred (including postage, delivery, freight, transportation or insurance of the product) to return the faulty product to us, however, we will arrange delivery of the repaired or replaced faulty product to you.

Important Information Repair Notice

Please be aware that the repair of your products may result in the loss of any user-generated data (such as stored telephone numbers, text messages and contact information). Please ensure that you have made a copy of any data saved on your product before sending for repair. Please be aware that products presented for repair may be replaced by refurbished products or parts of the same type rather than being repaired.