



Bluetooth Digital Smart Key
User Manual



Dear friend, thank you for choosing Xhorse Bluetooth Digital Smart Key. We recommend that you read the user manual carefully before use to get the most out of this new product.

This product is designed for upgrading traditional keyless entry vehicles without damaging them. It allows you to control your vehicle's lock, unlock, trunk, and ignition start functions directly with your phone. You can also easily share the digital smart key with family and friends. In addition to being a digital smart key, it also serves as a vehicle diagnostic tool, allowing you to monitor your vehicle's status and fault information in real time, so you can stay informed about its condition.

This paper manual provides only the basic usage instructions. For detailed installation and operation instructions, please scan the QR code below to access the manual online.



1

1.Product Introduction

1.1 Features

- Automatic locking and unlocking when the phone is near or away.
- Drive without a physical key. Simply get in and start the car with one touch.
- Real-time vehicle status and fault codes monitoring (Supported models are listed, and the list will be continuously updated).
- Remote car authorization, no distance limits.
- Enhanced security: Once the door is opened without authorization, the vehicle cannot be started.
- Wire-free installation, preserving the original key's function.
- Powered by OBD, the system requires no batteries, eliminating fire hazards.

1.2 Parameters

Item	Specs
Input Port	Vehicle standard OBD port
Working Voltage	12V
Working Current	12mA
Working Temperature	-20-55℃
Storage Temperature	-30-65℃
Dimensions	56.3×50.4×29.4mm

2

2. Usage Procedure

2.1 Program Bluetooth Digital Smart Key

For vehicle security, the initial installation requires programming with the vehicle using Xhorse tool. After purchase, please contact a nearby professional auto repair shop or automotive locksmith for programming.

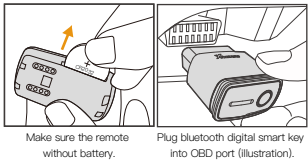
Contact the dealer download the Xhorse app and consult customer service.

2.2 Device Binding

Step 1: Download and install Smart Key app.



Step 2: Plug bluetooth digital smart key into the vehicle's OBD port, then connect and bind it to your phone via the app.



3



Figure 2.1



Figure 2.2



Figure 2.3

2.3 Program Uploading

Enter [Settings – OBD Diagnosis], select the correct vehicle model (e.g., Baojun 730 as shown in Figures 2.4 and 2.5). Once selected, the app will automatically write the OBD diagnosis program to the device.

Note: If your vehicle model is not currently supported, it will not affect the digital key function, though real-time vehicle and fault information will be unavailable. Please be patient as we will continue to offer free updates.

4

Note: For security, the vehicle will automatically lock when the Bluetooth connection is lost, regardless of the auto unlock/lock setting.

OBD Diagnosis Function

View vehicle status and fault codes on the app's main interface (supported models are listed, and the list will be continuously updated), as shown in Figure 2.7.



Figure 2.6



Figure 2.7

6

Remote vehicle authorization:

Share key permissions remotely so that your family can use the vehicle without a physical car key. As shown in Figures 2.8 and 2.9, click "Share vehicle" to generate an authorization code, and send the code to your family. Your family members need to first install the app, then go to the "Share vehicle" feature, select "Get temporary vehicle", and gain temporary access to the vehicle.



Figure 2.8



Figure 2.9

7

3. Frequently Asked Questions

3.1 Is the auto lock/unlock feature not responsive?

As shown in Figures 3.1 and 3.2, if the auto lock/unlock feature is not responsive, you can enable the [Auto Unlock And Lock] feature to calibrate the sensing position.

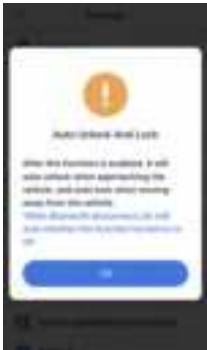


Figure 3.1

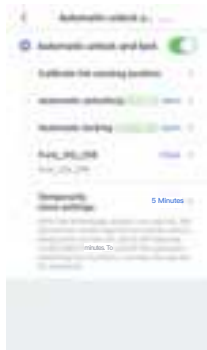


Figure 3.2

8

The APP provides two methods for calibrating the sensing position:

- ① Manual Adjustment: As shown in Figure 3.3, manually drag the lock and unlock points to set the desired positions.
- ② Intelligent Sensing: As shown in Figure 3.4, calibrate the parameters based on the actual device-vehicle distance.



Figure 3.3

9



Figure 3.4

3.2 How to set Custom Key Combinations?

If the vehicle has special functions (e.g., hold lock to raise windows, double-click trunk to open, press and hold lock to remote start), you can set custom key combinations through [Advanced Setting – Custom buttons]. This allows the app to perform these special functions. Refer to the on-screen instructions for specific adjustment methods, as shown in Figure 3.5.



Figure 3.5

3.3 How to Bind Multiple Phones?

Bluetooth digital smart key supports binding up to 12 phones. Click [Advanced Setting – Learning mode – Enter Learning Mode] to add a new phone. Additionally, you can reset the Bluetooth connection password via [Change Password], as shown in Figure 3.6.

10



Figure 3.6

3.4 Is There a Maintenance Mode?

Bluetooth digital smart key supports setting a maintenance mode, which temporarily disables phone detection. Click [Advanced Setting – Switching Mode – Maintenance Mode]. In this mode, the vehicle can unlock/lock doors and start without detecting the phone. This is typically used for scenarios such as car washing. As shown in Figure 3.7.



Figure 3.7

11

3.5 Can the smart key part Inside the Device Be Used for Emergency Starting?

The device includes a physical emergency key. Under normal circumstances, the functionality of this emergency key is restricted and remains in a protected state for security purposes. Even if removed, it cannot be used directly. As shown in Figure 3.8.



Figure 3.8

12

4 Warranty Terms

The warranty for the Bluetooth digital smart key is one year, based on the transaction receipt date. If there is no receipt, the production date recorded by the manufacturer will apply.

- * Warranty does not cover:
- Damage due to improper use.
 - Damage from unauthorized repairs or modifications.
 - Damage from drops, impacts, or incorrect voltage.
 - Damage caused by force majeure.
 - Damage from long-term use in harsh environments.
 - Wear and dirt on the outer shell from normal use.

For after-sales service and support, contact the dealer or scan the QR code in the manual to download the Xhorse app and consult customer service.

Note: Images are for reference only; actual products may differ. Xhorse reserves all rights to this manual. Copying or distributing any part without permission is prohibited. The content may change without notice due to product updates.

13

FCC Caution:

§ 15.19 Labeling requirements.

This device complies with part 15 of the FCC Rules. Operation is subject to the following two conditions: (1) This device may not cause harmful interference, and (2) this device must accept any interference received, including interference that may cause undesired operation.

§ 15.21 Information to user.

Any Changes or modifications not expressly approved by the party responsible for compliance could void the user's authority to operate the equipment.

§ 15.105 Information to the user.

Note: This equipment has been tested and found to comply with the limits for a Class B digital device, pursuant to part 15 of the FCC Rules. These limits are designed to provide reasonable protection against harmful interference in a residential installation. This equipment generates uses and can radiate radio frequency energy and, if not installed and used in accordance with the instructions, may cause harmful interference to radio communications.

However, there is no guarantee that interference will not occur in a particular installation. If this equipment does cause harmful interference to radio or television reception, which can be determined by turning the equipment off and on, the user is encouraged to try to correct the interference by one or more of the following measures:

- Reorient or relocate the receiving antenna.
- Increase the separation between the equipment and receiver.
- Connect the equipment into an outlet on a circuit different from that to which the receiver is connected.
- Consult the dealer or an experienced radio/TV technician for help.

***RF warning for Portable device**

This equipment complies with FCC radiation exposure limits set forth for an uncontrolled environment. This equipment should be installed and operated with minimum distance 20 cm between the radiator & your body.

CE statements:**Frequency Band(s)**

This device operates with the following frequency bands and maximum frequency power.

Note: The product is compliant with these power limits required by the European Union.

RFID (433.92 MHz) Max Pe.r.p. is -3 dBm.

BLE: 9.09 dBm.

EU DECLARATION OF CONFORMITY

Hereby, Shenzhen Xhorse Electronics Co., Ltd. declare that this product with model XSBTK0 is in compliance with Directive 2014/53/EU and 2011/65/EU.