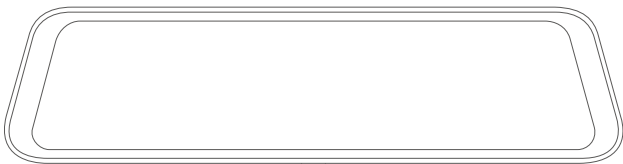




# Mirror Dash Camera P10



## USER MANUAL

Thank you for choosing our product. If you have any questions, please contact us at [support@pelsee.com](mailto:support@pelsee.com).

**Dear Customer,**

Thank you for selecting **Pelsee** as your preferred brand!

We sincerely hope that you will enjoy using our product as much as we do.

If you happen to encounter any issues while using the product, or if you have any ideas on how we can enhance it, please don't hesitate to get in touch with us. You can contact us through our official website at **[www.pelsee.com](http://www.pelsee.com)** or by emailing us at **[support@pelsee.com](mailto:support@pelsee.com)**.

Our dedicated support team will be delighted to help you find a solution that meets your satisfaction as quickly as possible.

**Yours Sincerely,**  
**Pelsee Team**

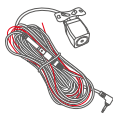
# NOTICE

1. Before using the product, please read and understand all the instructions in the user manual and keep the manual well for future reference.
2. Only use the original safety-tested accessories provided by the manufacturer.
3. Remove the protection film on the screen and lenses before using the product.
4. This product is intended to be mounted on an existing rearview mirror. It must not be placed in a location that may affect the deployment of airbags, and must not obstruct the driver's view.
5. Securely mount this product before driving. Make sure the lenses are clean and not blocked.
6. Don't leave the product in a place that is exposed to direct sunlight or extremely high temperature. The operating temperature of this product ranges from -10°C (14°F) to 60°C (140°F).
7. A formatted memory card is required to be inserted into the product before the first-time use.
8. Drive safe! Don't operate the product when you are driving to avoid a traffic accident caused by distraction. Be sure to park the car in a safe place before operating.

# IN THE BOX



Mirror Dash Camera



Rear Camera Kit



Car Charger



GPS Module



Rubber Strap x4



3M Adhesive Pad x2



Easy Pry Tool



Screws



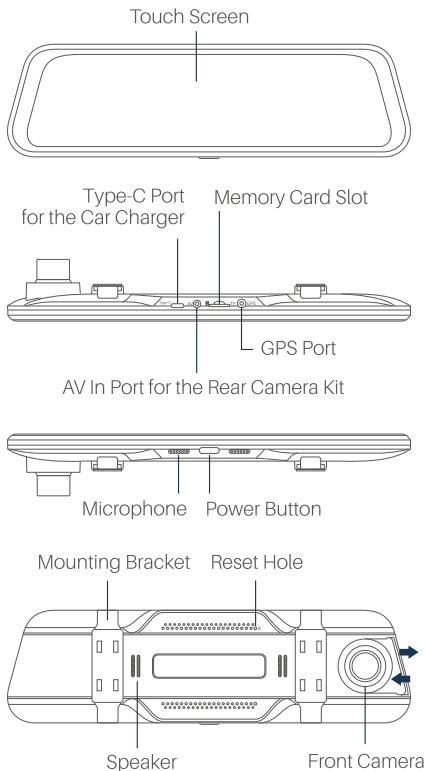
Cleaning Cloth



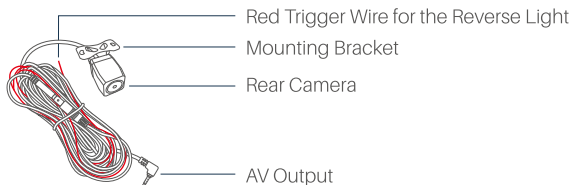
User Manual

# KNOW YOUR MIRROR DASH CAMERA

## Dash Cam



## Rear Camera Kit



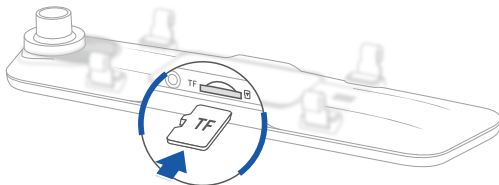
## INSTALLATION OF YOUR DASH CAMERA

### IMPORTANT:

- ① Professional installation is recommended.
- ② Stop the engine of your vehicle.

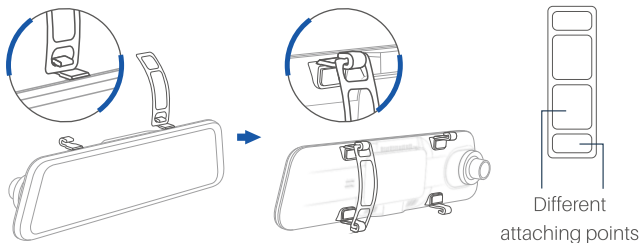
### Step 1:

Insert a memory card (supports up to 256GB, class 10 or higher speed card) into the dash camera.



### Step 2:

Mount the dash camera on your original rearview mirror with the rubber straps.

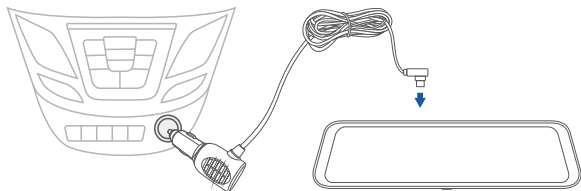


**Tip:**

If you notice a slight shaking of the dash camera after installation, please consider selecting a different attaching point.

**Step 3:**

Connect the Type-C port of the car charger to the dash camera, then plug the other end of the car charger into the cigarette lighter receptacle in your vehicle.



**Tip:**

The USB port on the car charger can supply power to your mobile device when it's connecting with the cigarette lighter receptacle.

#### Step 4:

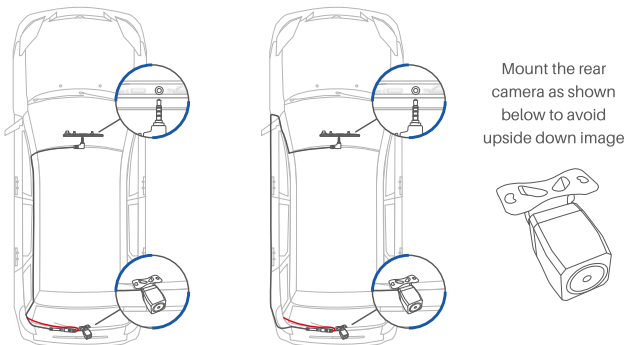
Connect the AV out port of the rear camera kit to the dash camera, then stretch the cable through the vehicle to the rear part of it.

#### Step 5:

Set the vehicle in reverse gear, then identify the wire that feeds the **Reverse Light** from the rear light cluster. Tie the **Red Trigger Wire** with the positive terminal of the correct wire.

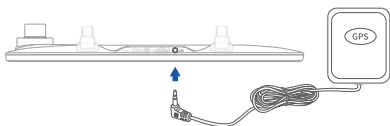
#### Step 6:

Mount the rear camera to the rear of your vehicle .



#### Step 7:

Insert the GPS module on the dash camera and stick it in a proper location with the letters GPS facing upward.



Different icons on the screen:

-  : No GPS Module Inserted
-  : GPS module inserted, insufficient satellites found.
-  : Enough Satellites Searched



## Step 8:

Start the engine to check if the installation is correct.

# USE YOUR MIRROR DASH CAMERA

## 1. Power On/off

Start the engine to automatically power on the camera; stop the engine to automatically power off the camera.

### Tip:

After powering on, please format the card according to the pop-up window or go to **Sys setting > Disk formatting** to format the card.

## 2. Screen On/Off

Press the power button once when the camera is on to screen it off; when it sleeps, press this button again or touch the screen to wake it up.

## 3. Recording Interface

After powering on and card formatting, the camera will automatically start recording videos. The video length of each video is 1 minute by default and the oldest videos will be overwritten by the latest video in a loop when there is no remaining capacity of the card.



Touch  to go to the main page.

Touch  to turn on or off the audio when recording.

Touch  to take a photo.

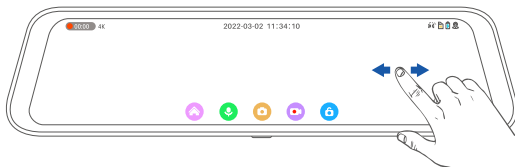
Touch  to start or stop recording the video.

Touch  to lock/unlock the current video.

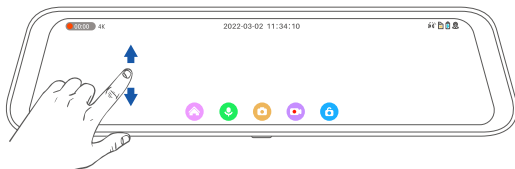
Touch  to check the voice commands.

### \* Gestures in the recording interface

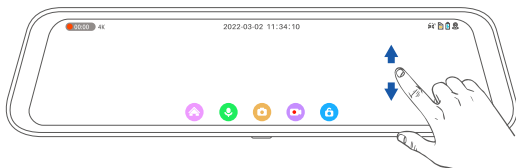
Slide leftward/rightward on the right part of the touch screen to switch among the view from the front camera, the view from the rear camera and the view from both cameras.



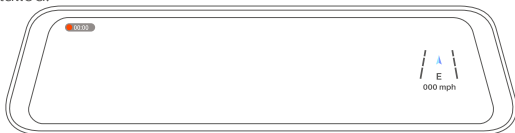
Swipe upward/downward on the left part of the touch screen to see the lens' full field of view of the camera.




Swipe upward/downward on the right part of the touch screen to adjust the brightness of the display.






Wait for around 3s after powering on the current speed of your vehicle and the direction will be displayed on the right of the screen if the GPS receiver is installed.



## 4. Check and Delete Videos and Photos

Touch  on the recording interface, then tap File explorer to access the recorded videos and photos.



- \* VIDEO-F contains the videos recorded by the front camera.  
VIDEO-B contains the videos recorded by the rear camera.  
VIDEO-LOCK contains the locked videos recorded by the front and rear cameras when there is a collision in driving or parking, and the locked videos recorded manually by tapping .
- IMAGE contains the photos taken by the front and rear cameras.
- \* Tap the file name to play the video/photo.
- \* Tap  and Yes on the pop-up window to delete the selected file.
- \* Tap  and Yes to lock the selected video and move it to the category of VIDEO-LOCK.

### \* How to transfer the files?

Please remove the memory card from the mirror dash camera, then connect it with a computer via a card reader(not included) to make a file transfer.

## SMART DRIVING ASSISTANCE FUNCTION

Important:

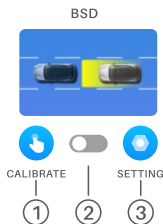
The smart driving assistance function in the dash camera is only for assistance, not a substitute for your driving judgment. For accurate monitoring, we recommend that you install the GPS receiver.

Touch  and **Smart drive** to set the BSD and LCA.






# 1. BSD (Blind Spot Detection)

With the BSD function, the system will warn the driver of an approaching vehicle in the preset blind spot area.



## ① CALIBRATE:

Set the BSD area for monitoring. Tap  to change the location of the dot on four corners; tap   or move the dots to adjust the monitoring area; tap **SAVE** to save the setting.

### Tip:

Please do not adjust the BSD area when you are driving. Obey the traffic rules and pull over your vehicle, then set a BSD area.

## ② On/Off:

Enable or disable the BSD function.

## ③ SETTING:

Set detailed parameters for the BSD function.

**Monitoring sensitivity:** Very Low, Low, Medium, and High. If you select **High**, the system will warn you of an approaching object in the BSD area regardless

of the relative velocity. If you select **Medium**, the system will warn you of an approaching object in the BSD area when the relative velocity between your car and the approaching object equals to or is greater than **0km/h**. If you select **Low** or **Very Low**, the system will warn you when the relative velocity between your car and the approaching object equals to or is greater than **10km/h** or **20km/h**.

**Monitoring type:** Pedestrians, Motor, and Pedestrians/Non-motor/Motor. You can select the object type for detection.

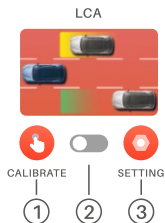
**Speed threshold:** 0km/h, 10km/h, 20km/h, and 30km/h. Please set your preferred option based on your reversing speed. The lower the speed threshold, the more alerts you'll receive.

**Auxiliary mode:** Normal and Astern. If you haven't connected the red wire of the rear camera to the reversing light, choose **Normal**. In this mode, the system alerts for objects in the monitoring areas of BSD and LCA. If you have connected it, select **Astern**. In this mode, alerts are given only for objects in the BSD monitoring area.





**Alarm area display:** Open and Closed. Display or hide the alarm area on the screen.

## 2. LCA (Lane Change Assist)

With the LCA function, the system will warn the driver of an approaching vehicle in adjacent lanes and help drivers safely make lane changes.



### ① CALIBRATE:

Set the LCA area for monitoring. Tap  to change the location of the dot on four corners; tap    or move the dots to adjust the monitoring area; tap **SAVE** to save the setting.

#### Tip:

Please do not adjust the LCA area when you are driving. Obey the traffic rules and pull over your vehicle, then set an LCA area. After that, make the same settings for another LCA area.

### ② On/Off:

Enable or disable the LCA function.

### ③ SETTING:

Set detailed parameters for the LCA function.

**Monitoring sensitivity:** **Very Low**, **Low**, **Medium**, and **High**. If you select **High**, the system will warn you of an approaching object in the LCA areas regardless of the relative velocity. If you select **Medium**, the system will warn you of an approaching object in the LCA areas when the relative velocity between your car and the approaching object equals to or is greater than **0km/h**. If you select **Low** or **Very Low**, the system will warn you when the relative velocity between your car and the approaching object equals to or is greater than **10km/h** or **20km/h**.

**Monitoring type:** **Pedestrians**, **Motor**, and **Pedestrians/Non-motor/Motor**. You can select the object type for detection.

**Speed threshold:** **10km/h**, **30km/h**, **50km/h**, and **80km/h**. Please choose your preferred option based on your driving speed. The lower the speed threshold, the more frequent the alerts.

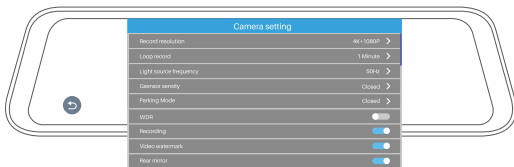
**Alarm Tone: Open and Closed.** Turn on or turn off the audio alarm when an approaching object is detected.

**Alarm area display: Open and Closed.** Display or hide the alarm areas on the screen.

## SETTINGS

### Camera Settings

Tap  and Camera setting to check the camera settings.



Tap to get back to the previous interface.

#### 1. Record resolution

Tap to switch the resolution of the front camera and the rear camera.

#### 2. Loop record

Change the recording time of each video. The recording time is set to be 1 minute by default. You can choose from **1 Minute**, **2 Minutes**, and **3 Minutes**.

#### 3. Light source frequency

Change the fresh rate between 50Hz and 60 Hz.



#### 4. Gsensor sensitivity

Set the different G-sensor sensitivity of collision detection when driving. You can select from **Low**, **Medium**, **High** and **Closed** as needed. If you select **High**, the camera will automatically start recording a locked video when the car encounters a **minor** collision. If you select **Low**, the camera will start recording a locked video when the car encounters a **severe** collision. A flashing yellow dot on the upper left corner will be displayed when recording a locked video. The video is locked and will not be overwritten.

#### 5. Parking mode

- \* **Closed.** Disable the function of parking mode.
- \* **Time-lapse record.** After enabling this option, every 30 minutes of videos will be compressed to 1 minute and then be saved in the memory card.
- \* **Gsensor.** See the content in the part of Gsensor sensity.

##### Note:

An extra Hardwire Kit (not included) is needed for using this function.

#### 6. WDR

This option enables the camera to capture details clearly in both the poorly and strongly illuminated areas of the video.

#### 7. Recording

Turn on/off the audio when recording.

#### 8. Video watermark

Hide or show the date and time on the recorded video.

#### 9. Rear mirror

Turn on or turn off the mirroring function of the view from the rear camera. If you enable it, the left and right of the view would be reversed.

## Tip:

The view of the saved video is not mirrored.

# System Settings

Tap  and Sys setting to check the system settings.



## 1. Stream media switch

Set the first view of the display. If **Stream Media** is **ON**, the display will show the rear camera's view by default when starting the engine. If it's **OFF**, the display will show the image from the front camera.

## 2. Volume setting

Turn up or down the volume of the system.

## 3. Start up sound

Turn on/off the sound when powering on/off the camera.

#### 4. Keytone

Turn on/off the sound when tapping the touch display.

#### 5. Auto power off

Set the time duration to automatically power off the system. The options are **Closed**, **1 Minute** and **3 Minutes**.

#### 6. Screen sleep

Set the time to enter sleep mode after a certain period of inactivity. You can choose from **Closed**, **1 Minute** and **3 Minutes**.

#### 7. Speed Unit

Change the unit of the speed displayed on the screen.

#### 8. Speed error adjustment

If the speed indicated on the screen is not highly precise, you have the option to manually fine-tune it here.


#### 9. Language setting

Change the language of the system.

#### 10. Time zone select

Select your time zone.

#### 11. Voice Control

Enable or disable voice control and adjust its sensitivity. If you find the voice control less responsive, you can choose from High, Medium, or Low sensitivity levels. Once you select a sensitivity level, an icon  will appear in the lower right corner of the dash camera. Simply touch it to check the voice commands.

#### 12. Satellite information

This option is only available when the GPS receiver is installed. After installation, you can check the detailed GPS information here.

### 13. Date & time setting

Set the date format and clock format of the dash camera.

### 14. Disk formatting

Tap to bring up the option of formatting the memory card.

### 15. Version information

Check the version of the camera. The information may be required when the technical support is needed.

### 16. Restore factory

Tap to bring up the option of restoring the camera to factory settings.

## VOICE CONTROL

This mirror dash camera can be controlled via some voice commands after you set a sensitivity level for the option of **Voice Control** in the **Sys setting**.

Please check the voice commands below:

Turn on screen, Turn off screen, Show front camera, Show rear camera, Show both cameras, Turn on audio, Turn off audio, Lock the video, Take photo

## CHECK THE GPS DATA

### Step 1:

Visit <https://dvplayer.net/setup.html> to download DVPlayer onto your computer.

### Step 2:

Install DVPlayer on your computer and run the application. To protect your privacy, please click **About > Product Registration** to enter the provided

FREE registration code (the same as the Serial Number on the back of the your dash camera) and your email address to register your dash camera. This registration code is exclusive for your use of the App and your product, and it is entirely free of charge without any future costs.

**Tip:**

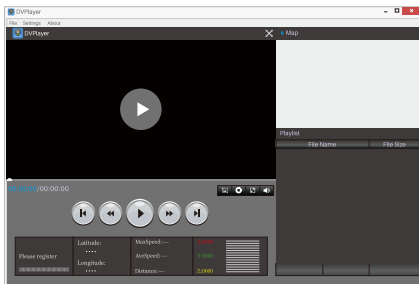
Each registration code can only be used on one Windows computer and one Mac computer. If you initially register on a Windows computer and later want to switch to a different Mac computer, follow these steps: Go to About and click on Delete Registration to remove the code from the Windows computer. Then, you can enter the same code on the Mac computer to register your dash camera on that device.

**Step 3:**

Transfer the videos from the dash camera to your computer using a card reader.

**Step 4:**

Launch DVPlayer and open the video you want to play.



Step 5:

Tap Settings to set Video Playback mode, Language, Map, Speed Unit, Track linking and Auto Play Next.

## SPECIFICATIONS

Video Resolution	2.5K and 1080P
Video Format	TS
Photo Format	JPG
Memory Card Supported	Up to 256GB
Operating Temperature	-10°C(14°F)-60°C(140°F)
Storing Temperature	-20°C (-4°F) to 70°C (158°F)
Voltage	12V with Car Charger

# CAUTION

RISK OF EXPLOSION IF BATTERY IS REPLACED BY AN INCORRECT TYPE.  
DISPOSE OF USED BATTERIES ACCORDING TO THE INSTRUCTIONS

 The symbol indicates DC voltage



RECYCLING

This product bears the selective sorting symbol for Waste electrical and electronic equipment (WEEE). This means that this product must be handled pursuant to European directive 2012/19/EU in order to be recycled or dismantled to minimize its impact on the environment. User has the choice to give his product to a competent recycling organization or to the retailer when he buys a new electrical or electronic equipment. This product can be used across EU member states.  
EU Compliance Statement: Shenzhen Vycol-Glint Innovations Technology co., Ltd hereby declares that this device is in compliance with the essential requirements and other relevant provisions of the Directive 2014/53/EU.



GLOBAL ONE SOLUTION LTD  
Address: 6 rue d'Armaillé 75017 Paris  
E-Mail: GstarUK.service@hotmail.com



GLOBAL STAR UK SOLUTION LTD  
Address: 7 COPPERFIELD ROAD COVENTRY, WEST  
MIDLANDS, ENGLAND UNITED KINGDOM CV2 4AQ  
E-Mail: GstarUK.service@hotmail.com

Manufacturer:  
Shenzhen Vycol-Glint Innovations Technology co., Ltd  
Address:  
No. 26, Gangsheng Road. Building A, Room 509, Bao'an District,  
Shenzhen, Guangdong