



Affordable. Reliable. Home Improvement.

ELECTRIC BED LIFT

MODEL:D603-75/D603-75F/D603-75F-01/
C603-90F/C603-90F-01

Technical Support and E-Warranty Certificate
www.vevor.com/support

VEVOR

Affordable. Reliable. Home Improvement.

ELECTRIC BED LIFT



MODEL: D603-75



MODEL: D603-75F/D603-75F-01



MODEL: C603-90F/C603-90F-01

This is the original instruction, please read all manual instructions carefully before operating. VEVOR reserves a clear interpretation of our user manual. The appearance of the product shall be subject to the product you received. Please forgive us that we won't inform you again if there are any technology or software updates on our product.

PARAMETER

Specification parameters					
input voltage	100-240V	output voltage	DC29v	Working power	Approximately 50W
Input current	1.5A	Output current	2A	Input frequency	50/60HZ



Warning-To reduce the risk of injury, user must read instructions manual carefully.

MATTERS NEEDING ATTENTION

1. Do not allow children to operate and use it alone.
2. Do not sit/lie on the top of the backrest during lifting.
3. Do not let children play around the back of the product after lifting.
4. Do not squeeze/drag the connecting wires to avoid damage, short circuit, and leakage,

WARNING for adapter:

For type Y attachment:

If the supply cord is damaged, it must be replaced by the manufacturer, its service agent or similarly qualified persons in order to avoid a hazard.

-For indoor use only.

-Do not use the charger in the circumstances that output polarity does not match the load polarity.

-Under no circumstances could the cover be opened. If the cover is damaged, the adapter may no longer be used.

-This appliance can be used by children aged 8 years and above and persons with reduced physical, sensory or mental capabilities or lack of

experience and knowledge if they have been given supervision or instruction concerning use of the appliance in a safe way and understand the hazards involved.

-Children shall not play with the appliance.

-Cleaning and user maintenance shall not be made by children without supervision.

CORRECT DISPOSAL



This product is subject to the provision of European Directive 2012/19/EU. The symbol showing a wheeled bin crossed through indicates that the product requires separate refuse collection in the European Union. This applies to the product and all accessories marked with this symbol.

Products marked as such may not be discarded with normal domestic waste, but must be taken to a collection point for recycling electrical and electronic devices.

FCC Information:

CAUTION: Changes or modifications not expressly approved by the party responsible for compliance could void the user's authority to operate the equipment!

This device complies with Part 15 of the FCC Rules. Operation is subject to the following two conditions:

- 1) This product may cause harmful interference.
- 2) This product must accept any interference received, including interference that may cause undesired operation.

WARNING: Changes or modifications to this product not expressly approved by the party responsible for compliance could void the user's authority to operate the product.

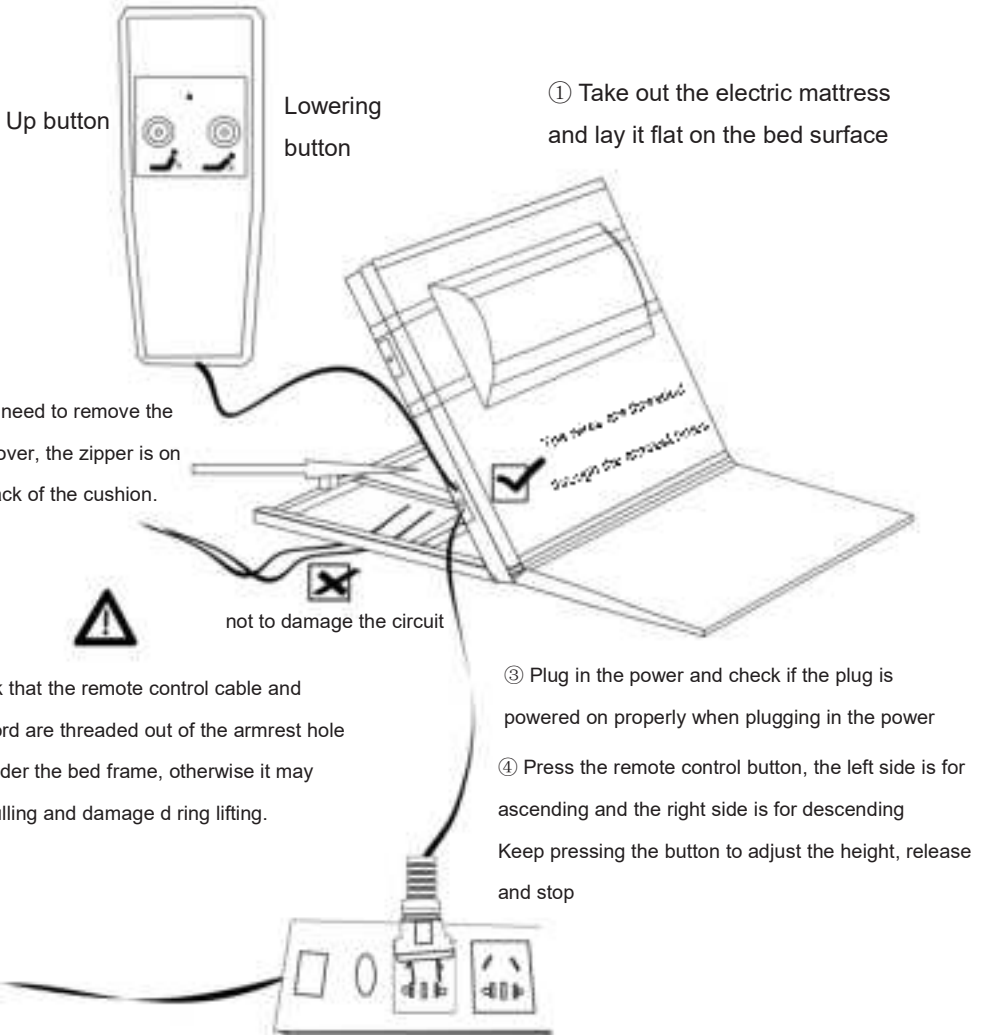
Note: This product has been tested and found to comply with the limits for a Class B digital device pursuant to Part 15 of the FCC Rules. These limits are designed to provide reasonable protection against harmful interference in a residential installation.

This product generates, uses and can radiate radio frequency energy, and if not installed and used in accordance with the instructions, may cause harmful interference to radio communications. However, there is no guarantee that interference will not occur in a particular installation. If this product does cause harmful interference to radio or television reception, which can be determined by turning the product off and on, the user is encouraged to try to correct the interference by one or more of the following measures.

- Reorient or relocate the receiving antenna.
- Increase the distance between the product and receiver.
- Connect the product to an outlet on a circuit different from that to which the receiver is connected.
- Consult the dealer or an experienced radio/TV technician for assistance.

INSTRUCTIONS

When using, it is necessary to lay a mattress or quilt on the electric mattress for better comfort! This product is relatively heavy, and users are not recommended to move it frequently.



ARMREST INSTALLATION



1. Align the screw holes on the armrest with the screws on the electric mattress.

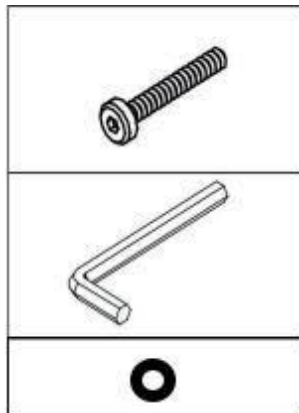
2. Insert the screws into the gasket and tighten them.

Note that the armrest is divided into fixed armrest (D603-75F/D603-75F-01) and folding armrest (C603-90F/C603-90F-01). The installation method is the same.

M8 screw x4

5mm wrench x1

Shim x4



Manufacturer: Shanghaimuxinmuyeyouxiangongsi

Address: Shuangchenglu 803nong11hao1602A-1609shi, baoshanqu, shanghai 200000 CN.

Imported to AUS: SIHAO PTY LTD. 1 ROKEVA STREETEASTWOOD NSW 2122 Australia

Imported to USA: Sanven Technology Ltd. Suite 250, 9166 Anaheim Place, Rancho Cucamonga, CA 91730

UK	REP
----	-----

YH CONSULTING LIMITED. C/O YH Consulting Limited Office 147, Centurion House, London Road, Staines-upon-Thames, Surrey, TW18 4AX

EC	REP
----	-----

E-CrossStu GmbH
Mainzer Landstr.69,
60329 Frankfurt am Main.



Technical Support and E-Warranty Certificate
www.vevor.com/support