

# **Service Manual**

**ViewSonic VX2758A-2K-PRO-2**

**Model No. VS19757**

**27" Color TFT LCD Display**

**Copyright**

Copyright© 2025 by ViewSonic Corporation. All rights reserved. No part of this publication may be reproduced, transmitted, transcribed, stored in a retrieval system, or translated into any language or computer language, in any form or by any means, electronic, mechanical, magnetic, optical, chemical, manual or otherwise, without the prior written permission of ViewSonic Corporation.

**Disclaimer**

ViewSonic makes no representations or warranties, either expressed or implied, with respect to the contents hereof and specifically disclaims any warranty of merchantability or fitness for any particular purpose. Further, ViewSonic reserves the right to revise this publication and to make changes from time to time in the contents hereof without obligation of ViewSonic to notify any person of such revision or changes.

**Trademarks**

Optiquest is a registered trademark of ViewSonic Corporation.  
ViewSonic is a registered trademark of ViewSonic Corporation.  
All other trademarks used within this document are the property of their respective owners.

**Revision History**

Revision	SM Editing Date	ECR Number	Description of Changes
1a	07/04/25		Initial Release.

# Content Index

Maintenance and Clean .....	3
Product Specifications .....	4
OSD Settings and Shortcut Keys .....	8
Tool& Equipment .....	12
Disassembly Procedure .....	14
Electronic Circuit Block Diagram .....	17
PCB Layout Diagrams .....	18
Firmware & EDID Programming SOP .....	22
Troubleshooting Guide .....	23
Exploded Diagram .....	25

# Maintenance and Clean

## General Precautions

- Make sure the monitor is turned off and the power cable is unplugged from the power outlet.
- Never spray or pour any liquid directly onto the screen or case.
- Handle the monitor with care, as a darker-colored monitor, if scuffed, may show marks more clearly than a lighter-colored monitor.

## Cleaning the Screen

- Wipe the screen with a clean, soft, lint-free cloth. This removes dust and other particles.
- If the screen is still not clean, apply a small amount of non-ammonia, non-alcohol based glass cleaner onto a clean, soft, lint-free cloth; then wipe the screen.

## Cleaning the Case

- Use a soft, dry cloth.
- If the case is still not clean, apply a small amount of non-ammonia, non-alcohol based, mild non-abrasive detergent onto a clean, soft, lint-free cloth, then wipe the surface.

## Disclaimer

- ViewSonic® does not recommend the use of any ammonia or alcohol-based cleaners on the display screen or case. Some chemical cleaners have been reported to damage the screen and/or case of the monitor.
- ViewSonic® will not be liable for damage resulting from use of any ammonia or alcohol-based cleaners.

# Product Specifications

27"W ( 27" Viewable) LCD monitor  
Model No: VS19757

P/N: VX2758A-2K-PRO-2

## INTRODUCTION

1	Sales Name			<table><tr><td>Oracle P/N</td></tr><tr><td>VX2758A-2K-PRO-2</td></tr></table>	Oracle P/N	VX2758A-2K-PRO-2
Oracle P/N						
VX2758A-2K-PRO-2						
2	Display	Panel P/N  Drive Element Border Display Size Display Area Dot Pitch Resolution Aspect Ratio Backlight Backlight MTBF		CTX CT270WLEDM-C27  IPS Technology, a-si TFT Active Matrix LCD 3-Side Borderless Type 27 real diagonal / 69 cm 596.7 mm (H) x 335.7 mm (V) 0.233 mm (H) x 0.233 mm (V) QHD (Quad HD) 2560 X 1440 16:9 LED 30000 Hrs (Min)		
3	OPTICAL PERFORMANCE	Contrast Ratio      Viewing Angle   Color     Response Time      Luminance	W/B DCR <sup>*1</sup> HDR  H / V; CR ≥ 10  Depth Gamut  Tr+Tf (typ) GTG(AVR) MPRT	1000:1 (typ) 80M:1 HDR10  178 degree / 178 degree  16.7M, 8 bit true 97% of NTSC (Size) SRGB 137.37% (Size) / DCI-P3 95% (Coverage)  N/A 2 ms 1 ms  300 cd/m2		
4	SURFACE TREATMENT	Cover Glass Treatment		N/A Anti-Glare type, Hardness 3H, Haze 25%		
5	INPUT SIGNAL	Summary      Digital	Resolution (Max) Fv (Max) Native Resolution Fv (Max)  Video Sync Frequency Bandwidth  Video Sync Frequency Bandwidth	2560 x 1440 185 Hz 185 Hz  HDMI (v2.0) TMDS Fh = 31 ~ 215 KHz; Fv = 48 ~ 144 Hz 620 Mhz  DisplayPort (v1.4) PCI-E Fh = 31 ~ 255 KHz; Fv = 48 ~ 185 Hz 800 Mhz		

6	CONTENT PROTECTION			HDCP 2.2																	
7	COMPATIBILITY	Display		Windows 10/11 certified; macOS tested																	
8	RESOLUTION	Native		QHD (Quad HD) 2560 X 1440																	
		Maximun	HDMI (v2.0) DisplayPort (v1.4)	2560 X 1440 @ 144 Hz 2560 X 1440 @ 185 Hz																	
9	Multimedia	Audio		N/A																	
10	CONNECTORS	I/O		HDMI In (v 2.0) x2 DisplayPort In (v 1.4) x1 3.5mm Audio Out x1 3-pin Socket (IEC C14 / CEE22)																	
		Internal power supply																			
		Standard charge	Voltage (V) Current (mA)	N/A N/A																	
11	POWER	Voltage Frequency		AC 100-240V (Universal); 50/60 Hz Hz 50/60 Hz																	
		Consumption	On Mode	Max = 42 Watt Typ = 39 Watt <table><tr><td colspan="2">Mode</td><td>w/ Speaker</td><td>w/o Speaker</td></tr><tr><td rowspan="2">Standard</td><td>Max (Watt)</td><td>N/A</td><td>42</td></tr><tr><td>Typ (Watt)</td><td>N/A</td><td>39</td></tr><tr><td>Optimize</td><td>Typ (Watt)</td><td>N/A</td><td>32</td></tr><tr><td>Conserve</td><td>Typ (Watt)</td><td>N/A</td><td>24</td></tr></table>	Mode		w/ Speaker	w/o Speaker	Standard	Max (Watt)	N/A	42	Typ (Watt)	N/A	39	Optimize	Typ (Watt)	N/A	32	Conserve	Typ (Watt)
Mode		w/ Speaker	w/o Speaker																		
Standard	Max (Watt)	N/A	42																		
	Typ (Watt)	N/A	39																		
Optimize	Typ (Watt)	N/A	32																		
Conserve	Typ (Watt)	N/A	24																		
			Standby Mode Off Mode	0.5 Watt (Max) 0.3 Watt (Max)																	
12	ERGONOMICS	Tilt Range (Degrees) Swivel (Degrees) Pivot (Degrees) Height Adjust (mm)		-5 ~ 20 -45 ~ 45 -90 ~ 90 150																	
13	CONTROLS	Physical	Key buttons	Up, Right, Down, Left, Power																	
		OSD	Language Main Menu Blue Light Filter ECO Mode Game Mode View Mode	15 Input Select, Audio Adjust, ViewMode, Color Adjust, Manual Image Adjust, Setup Menu Yes Yes Yes Yes																	
14	OPERATING CONDITION	Temperature Humidity		32°F to 104°F (0°C to 40°C) 20% to 90% (no condensation)																	
15	STORAGE/ SHIPPING CONDITION	Temperature		-4°F to 140°F (-20°C to 60°C)																	

		Humidity		5% to 90% (no condensation)																																	
16	<b>DIMENSIONS</b>	Physical	Display w/ Stand	614 mm (W) x 424.32~574.32 mm (H) x 214 mm (D) 24.2 " (W) x 16.71~22.61 " (H) x 8.4 " (D)																																	
			Wall Mount	614 mm (W) x 366 mm (H) x 47 mm (D) 24.2 " (W) x 14.4 " (H) x 1.9 " (D)																																	
		Packing		859 mm (W) x 488 mm (H) x 128 mm (D) 33.8 " (W) x 19.2 " (H) x 5 " (D)																																	
17	<b>WEIGHT</b>	Net	Display w/ Stand	6.3 Kg ( 13.9 Lbs )																																	
			Wall Mount	4.5 Kg ( 9.8 Lbs )																																	
		Gross		8.1 Kg ( 17.8 Lbs )																																	
18	<b>REGULATIONS</b>	VSA VSE VSI VSCN		N/A CE, CE EMC, CB, RoHS, ErP, REACH, WEEE, EAC, UkrSEPRO BSMI, VCCI, PSE, BIS N/A																																	
19	<b>ENERGY EFFICIENCY</b>	Energy Star  EEI (After 2023)	PON Annual Energy Consumption	N/A N/A <table border="1"> <tr> <td>C</td><td colspan="3">Energy Efficiency Class</td><td>F, G w/ HDR</td></tr> <tr> <td rowspan="2">D</td><td rowspan="2">Screen Size</td><td>E</td><td>Centimeters</td><td>69</td></tr> <tr> <td>F</td><td>Inch</td><td>27</td></tr> <tr> <td>G</td><td colspan="3">Energy Consumption (KWh/1000h)</td><td>26, 31 w/ HDR</td></tr> <tr> <td>I</td><td colspan="3">Power Consumption Standby (less than)</td><td>0.5W</td></tr> <tr> <td>J</td><td colspan="3">Power Consumption Off (less than)</td><td>0.3W</td></tr> <tr> <td>K</td><td colspan="3">Native Resolution</td><td>2560x 1440</td></tr> </table>	C	Energy Efficiency Class			F, G w/ HDR	D	Screen Size	E	Centimeters	69	F	Inch	27	G	Energy Consumption (KWh/1000h)			26, 31 w/ HDR	I	Power Consumption Standby (less than)			0.5W	J	Power Consumption Off (less than)			0.3W	K	Native Resolution			2560x 1440
C	Energy Efficiency Class			F, G w/ HDR																																	
D	Screen Size	E	Centimeters	69																																	
		F	Inch	27																																	
G	Energy Consumption (KWh/1000h)			26, 31 w/ HDR																																	
I	Power Consumption Standby (less than)			0.5W																																	
J	Power Consumption Off (less than)			0.3W																																	
K	Native Resolution			2560x 1440																																	
20	<b>RELIABILITY</b>	MTBF		70000 Hrs (Excluding panel)																																	
21	<b>POWER SAVING FUNCTION</b>	On Active Off Off	Blue Amber	Normal ≤ 0.5W ≤ 0.3W																																	
22	<b>LOGISTICS</b>	VSA  VSE  VSI  VSCN	Pallet Load 20' Container 40' Container 40'HQ Container  Pallet Load 20' Container 40' Container 40'HQ Container  Pallet Load 20' Container 40' Container 40'HQ Container  Pallet Load 20' Container	N/A N/A N/A N/A  N/A N/A N/A N/A  40 pieces 400 pieces -- ( 40 sets x 10 pallets ) 840 pieces -- ( 40 sets x 21 pallets ) 1050 pieces -- ( 50 sets x 21 pallets )  N/A N/A																																	

		VSHK	40' Container 40'HQ Container  Pallet Load 20' Container 40' Container 40'HQ Container	N/A N/A  N/A N/A N/A N/A
		VSJP	Pallet Load 20' Container 40' Container 40'HQ Container	N/A N/A N/A N/A
23	<b>ID Code</b>	UPC Code  EAN Code (WW)  EAN Code (China)  JAN Code  GLN Code  S/N Prefix  EDID PID Code		76690702458 6  076690702458 6  N/A  4589468732655  0766907060102  XG6  4010
24	<b>COUNTRY OF ORIGIN</b>			CHINA
25	<b>WALL MOUNT</b>	VESA Compatible		100 x 100
26	<b>Eye ProTech</b>		Level Flicker Free Low Blue Light	Eye ProTech Yes Software solution
27	<b>CABINET COLOR</b>			Black
28	<b>OTHERS</b>			FreeSync, Security Slot, DDC/2B, DDC/CI, Detachable Base, Cable Organization
29	<b>PACKAGE CONTENTS</b>	VX2758A-2K-PRO-2 LCD Display x1 3-pin Plug (IEC C13 / CEE22) Power Cable -- 1.8m x1 DisplayPort Cable (v1.4; Male-Male) -- 1.8m x1 Quick Start Guide x1		



# OSD Settings and Shortcut Keys

Main Menu	Sub-menu	Menu Option	
Input Select	HDMI 1		
	HDMI 2		
	DisplayPort		
Audio Adjust	Volume	(-/+ , 0~100)	
	Mute	On	
		Off	
ViewMode	Standard		
	FPS		
	RTS		
	MOBA		
	Movie		
	Web		
	Text		
	MAC		
	Mono		

Main Menu	Sub-menu	Menu Option		
Color Adjust	Contrast/Brightness	Contrast	(-/+ , 0~100)	
		Brightness	(-/+ , 0~100)	
	6-axis Color	Hue	Red	(-/+ , 0~100)
			Green	(-/+ , 0~100)
			Blue	(-/+ , 0~100)
			Cyan	(-/+ , 0~100)
			Magenta	(-/+ , 0~100)
			Yellow	(-/+ , 0~100)
		Color Saturation	Red	(-/+ , 0~100)
			Green	(-/+ , 0~100)
			Blue	(-/+ , 0~100)
			Cyan	(-/+ , 0~100)
			Magenta	(-/+ , 0~100)
			Yellow	(-/+ , 0~100)
	Color Temperature	Bluish		
		Cool		
		Native		
		Warm		
		User Color	Red	(-/+ , 0~100)
			Green	(-/+ , 0~100)
			Blue	(-/+ , 0~100)
	Color Mode	sRGB		
		Adobe RGB		
		DCI-P3		
		Native		
	Color Space	Auto		
		RGB		
		YUV		
	Color Range	Auto		
		Full Range		
		Limited Range		
	HDR	Auto		
		Off		

Main Menu	Sub-menu	Menu Option	
Manual Image Adjust	Sharpness	(-/+, 0/25/50/75/100)	
	Blue Light Filter	(-/+, 0~100)	
	Aspect Ratio	4:3	
		5:4	
		16:9	
		16:10	
	Overscan	On	
		Off	
	Black Stabilization	(-/+, 0/10/20/30/40/50/60/70/80/90/100)	
	Advanced DCR	(-/+, 0/25/50/75/100)	
	Response Time	Standard	
		Advanced	
		Ultra Fast	
Setup Menu	Language	English	
		Français	
		Deutsch	
		Español	
		Italiano	
		Suomi	
		Svenska	
		Русский	
		Türkçe	
		Česká	
		Tiếng Việt	
		日本語	
		한국어	
		繁體中文	
		简体中文	
	Variable Refresh Rate	On	
		Off	
	1ms Mode	On	
		Off	
	Information		
	OSD Timeout	(-/+, 5/15/30/60)	

Main Menu	Sub-menu	Menu Option	
Setup Menu	OSD Background	On	
		Off	
	OSD Pivot	On	
		Off	
	Power Indicator	On	
		Off	
	Auto Power Off	On	
		Off	
	Sleep	30 minutes	
		45 minutes	
		60 minutes	
		120 minutes	
		Off	
	ECO Mode	Standard	
		Optimize	
		Conserve	
	DisplayPort 1.1	On	
		Off	
	Auto Detect	On	
		Off	
	DDC/CI	On	
		Off	
	Memory Recall		

# Tool& Equipment

## 1. Hardware tool

### 1.1 Cross screwdriver



### 1.2 FW tool



### 1.3 USB 2.0 cable



### 1.4 HDMI cable



## 1.5 Guide knife



## 2. Software tool

### 2.1 RTD tool V1.2

### 2.2 Sm\_setup25.exe

## 3. Equipment

### 3.1 True RMS multimeter



### 3.2 Video pattern generator

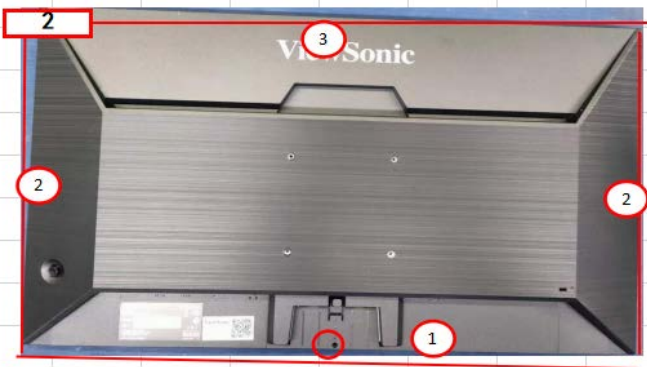




### 3.3 Oscilloscope

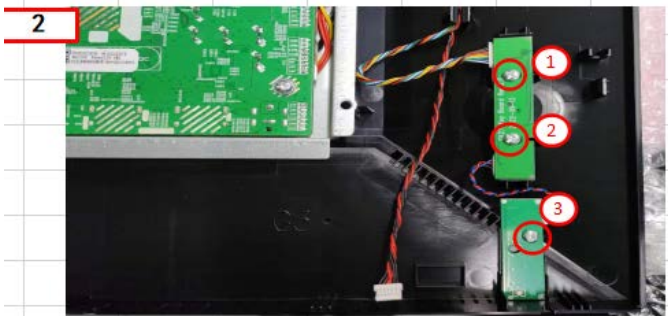
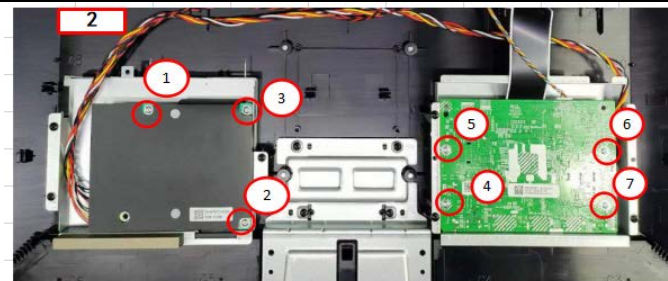
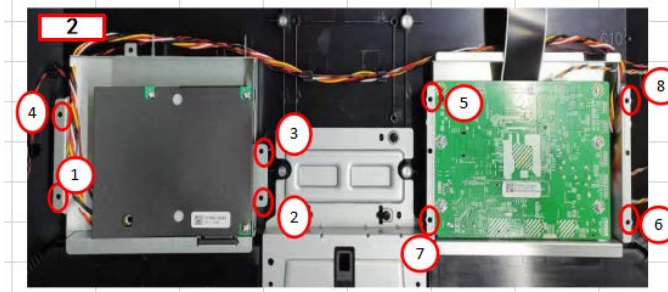

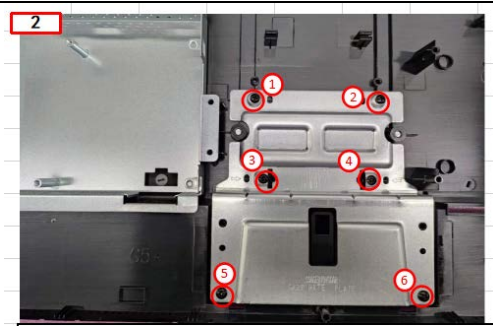


# Disassembly Procedure

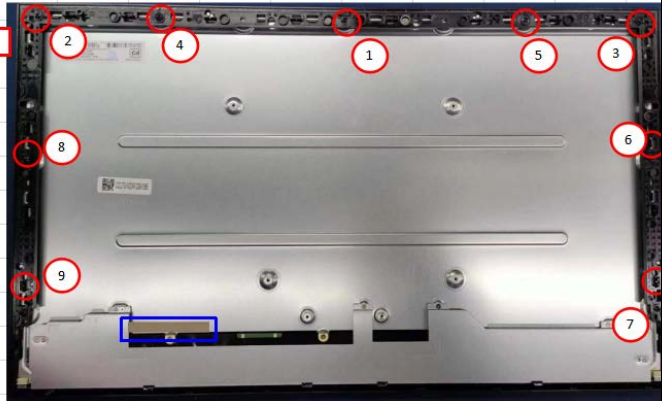
- 1. Clean the rom for work
- 2. Identify the area for material
- 3. Prepare the implement,equipments and materials as bellow:
  - 1) Press-fixture
  - 2) working table
  - 3) Screw-driver
  - 4) knife\*1
  - 5) Glove
  - 6) Cleaning cloth
  - 7) ESD protection

NO.	Picture	Operation	Tool
1		Disassemble back shell---1screws and 1 knife	Screw-driver knife*1
2		Remove the wires	
3		Remove the crossband ---4 screws	



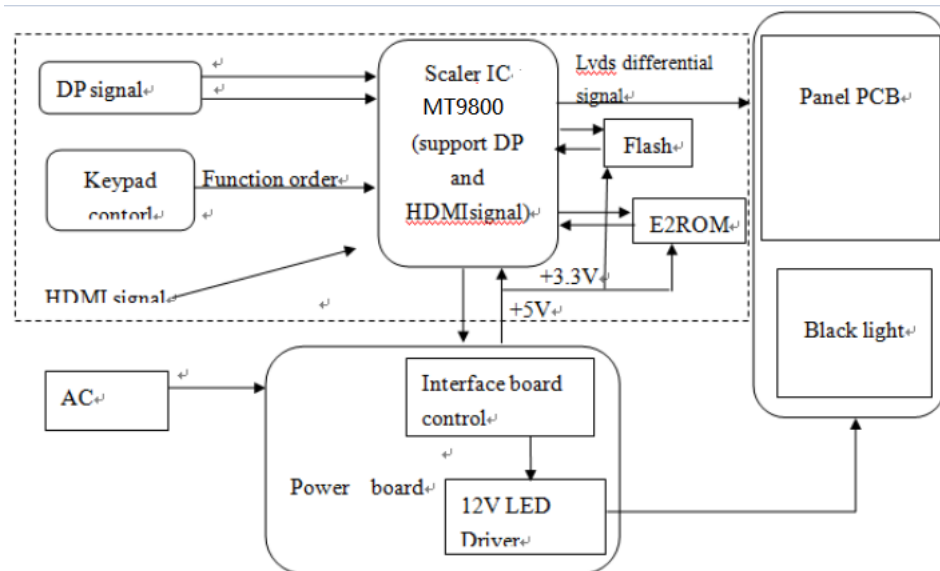
4		Remove the key pad  ---3screw	Screw-driver
5		Remove the motherboard, power board  ---7 screws	Screw-driver
7		Remove motherboard, power board bent box going wire.  ---8screw	Screw-driver
8		Disassemble the motherboard---3screw	Screw-driver
9		Remove the adapter strip---6screw	Screw-driver



10		<p>Remove the front frame---9screw</p>	Screw-driver
----	---	--	--------------

# Electronic Circuit Block Diagram

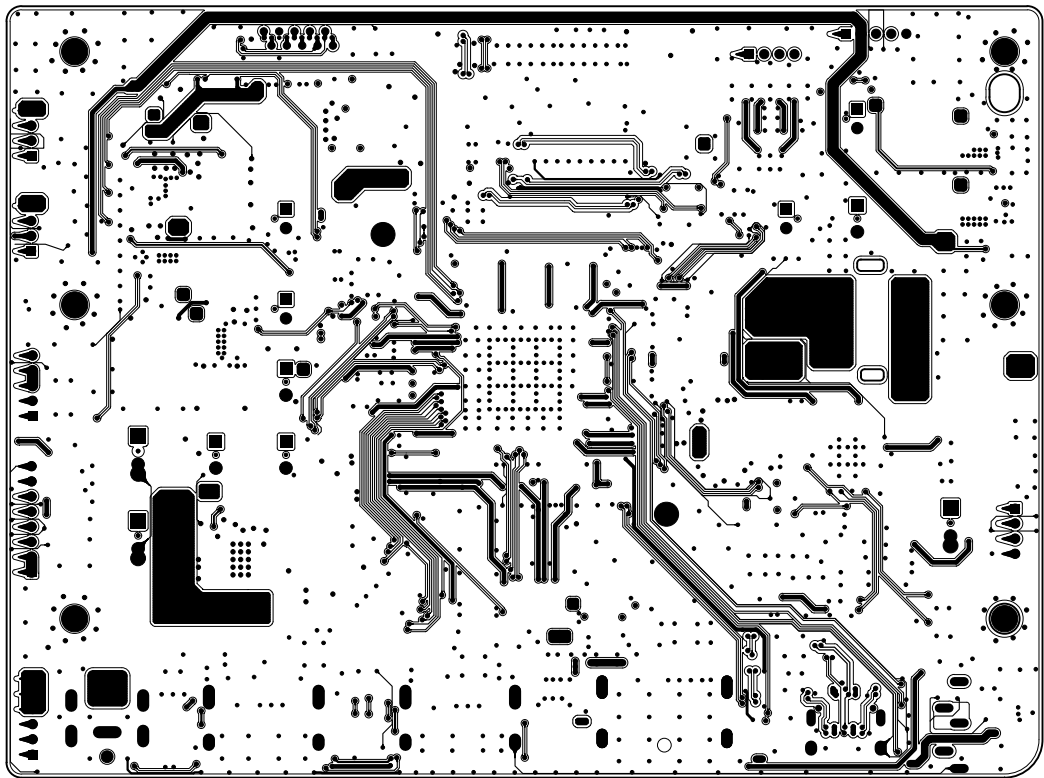
VX2758A-2K-PRO-2 consists of a main body and a stand (base). The main body contains an QUNCHUANG TFT LCD module with LED Backlight, a Power board, a control board, a LED board, and an interface board. The block diagram is shown in .



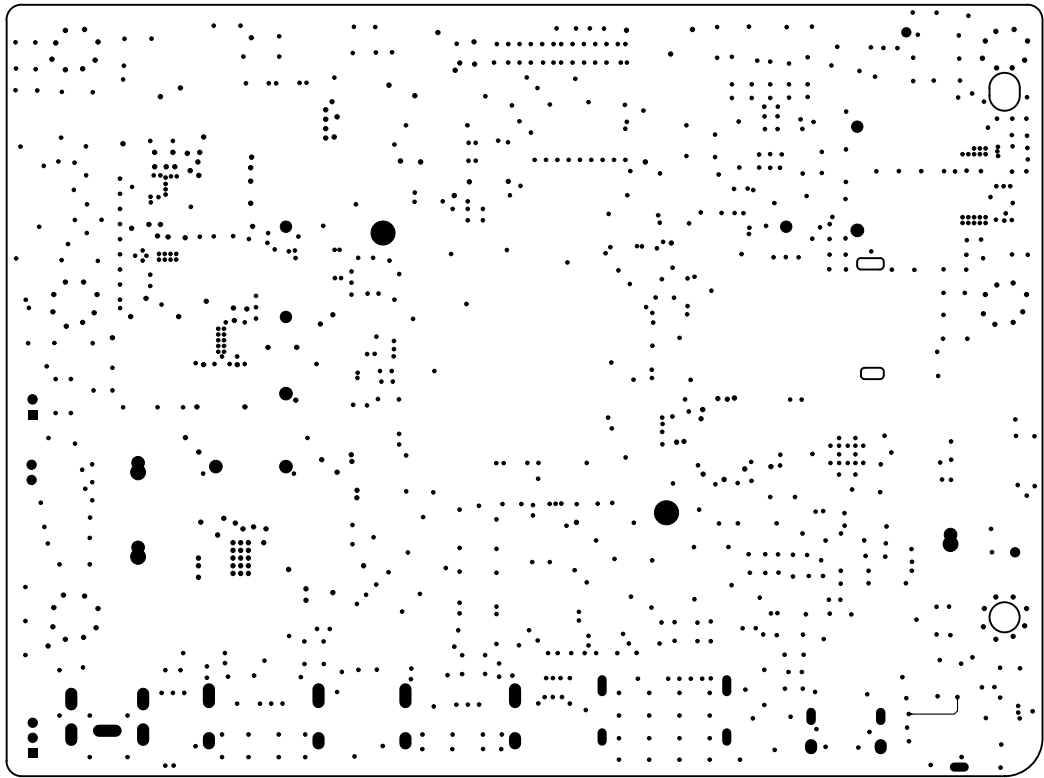
# PCB Layout Diagrams

## 1. Main Board

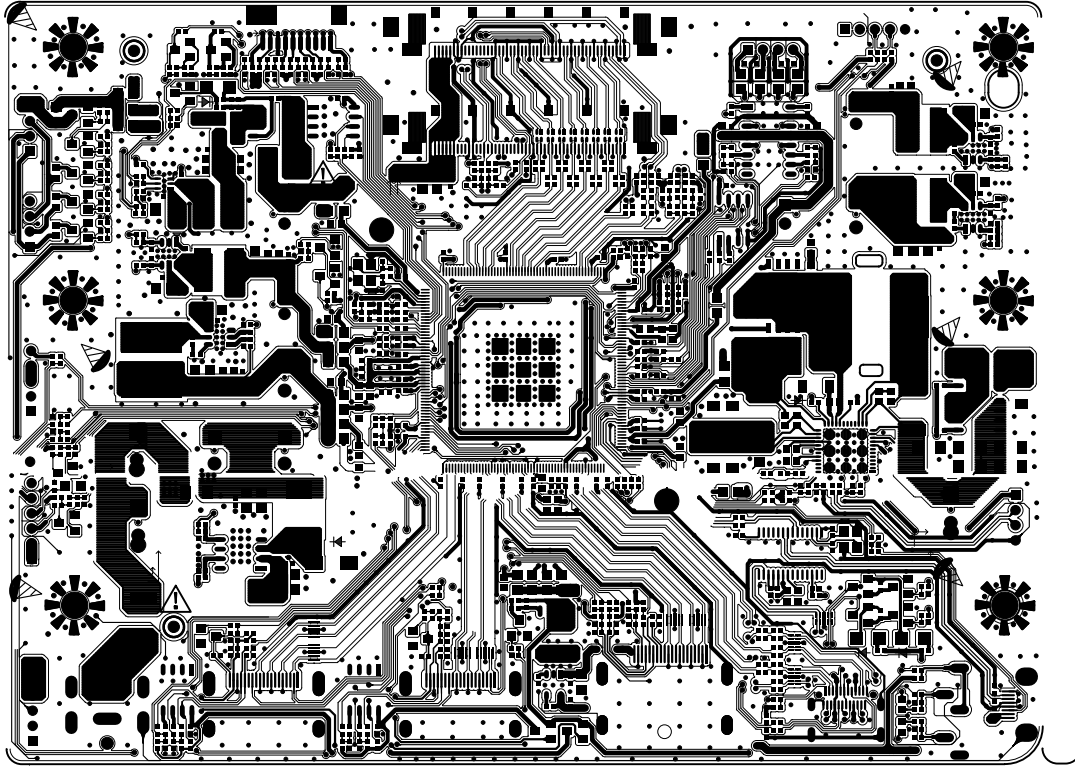
BOT



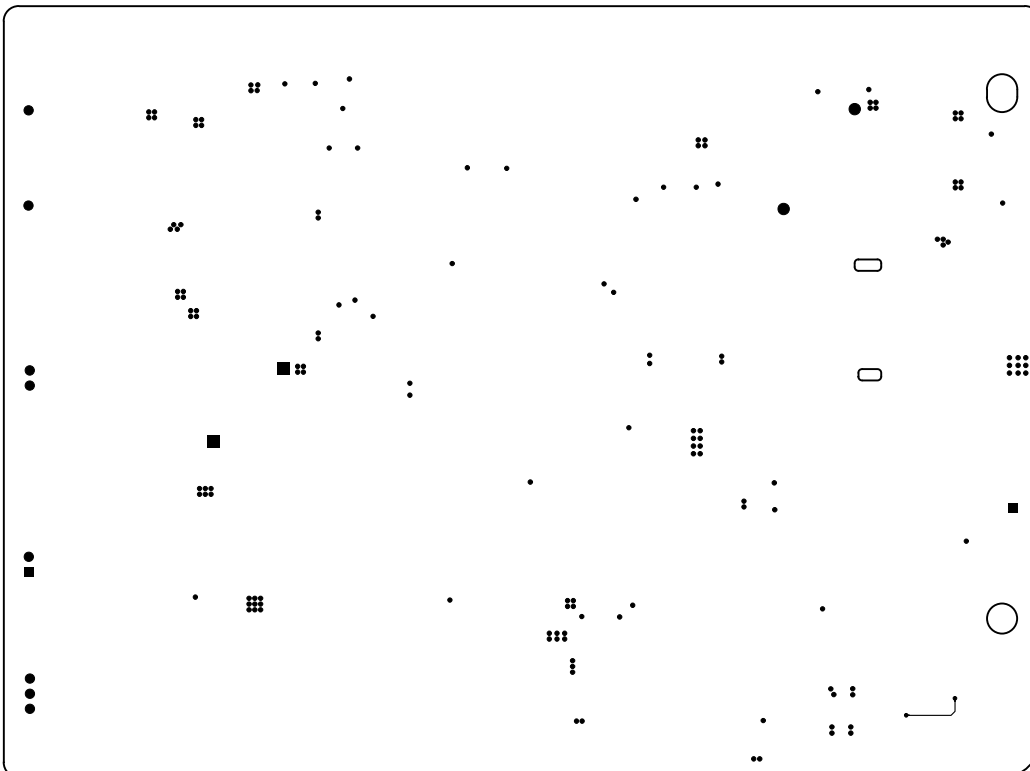
GND



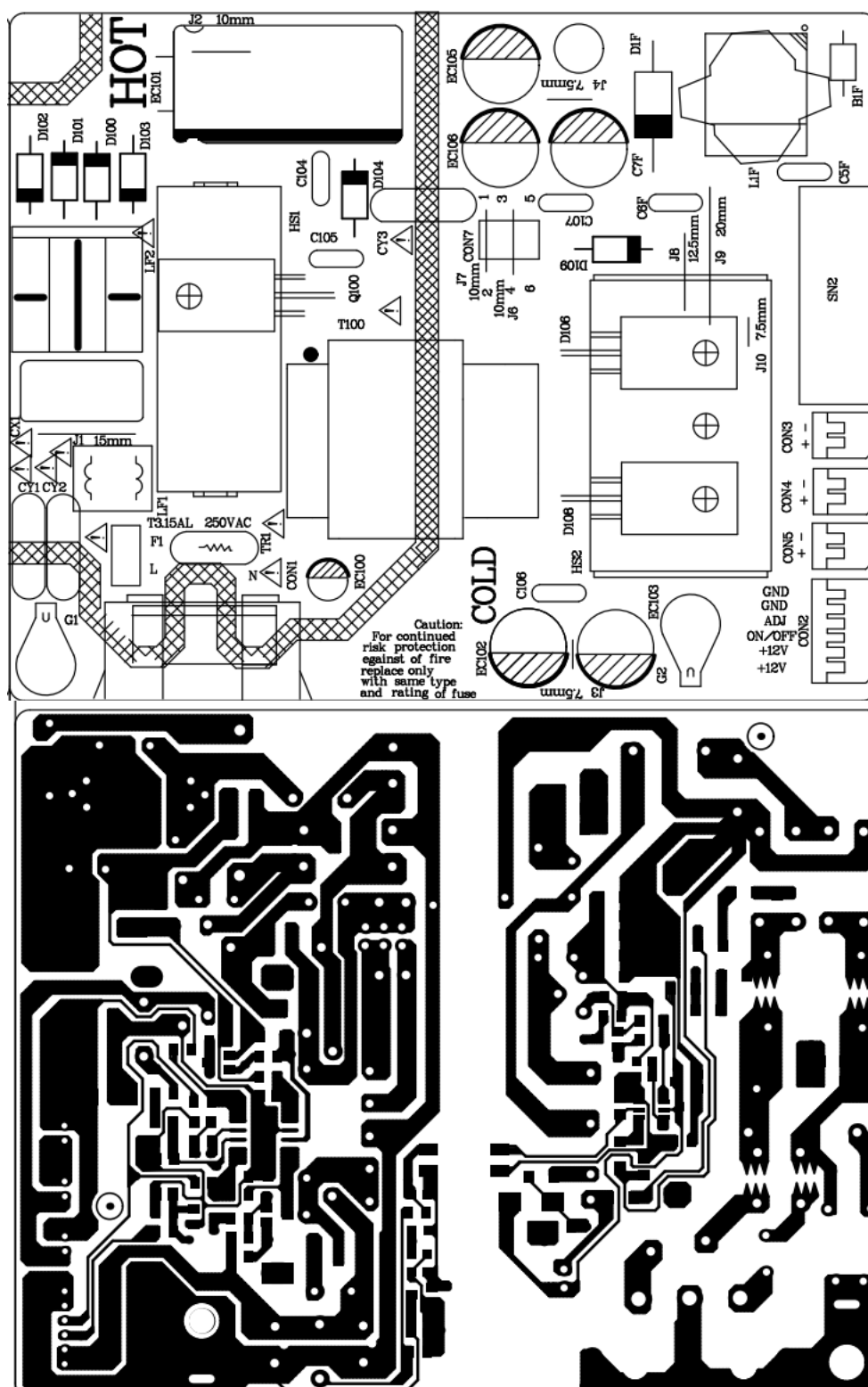
TOP



VCC



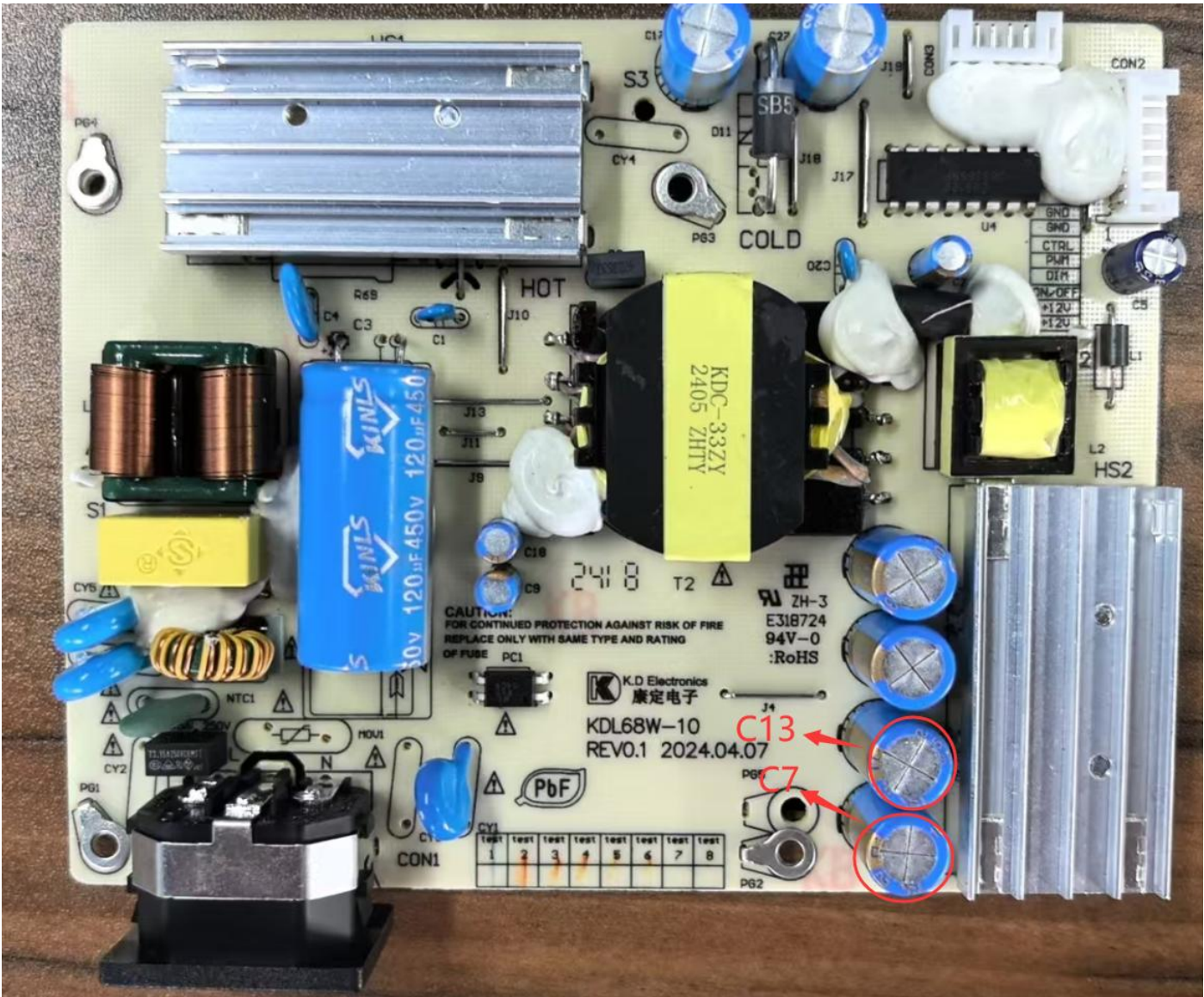
## 2. Power Board



VX2758A-2K-PRO-3/VX2758A-2K-PRO/VX2758A-2K-PRO-2/VX2780-2K/VX2780J-2K/VX32

76-4K-MHD\_Power

board\_X01KDL68WMPDR/X01KDL68WMPBR/X01KDL68WMPAR/S08KDL68WAD0R\_Cap  
acitor



Model name: VX2758A-2K-PRO-3/VX2758A-2K-PRO/VX2758A-2K-PRO-2/VX2780-2K/VX2780J-2K/VX3276-4K-MHD  
Power board P/N:X01KDL68WMPDR/X01KDL68WMPBR/X01KDL68WMPAR/S08KDL68WAD0R

No	Name	P/N	Position number	Specification	Remarks
1	capacitor	(1) GT1E681M101 6VT	C13	25V/680uF	Over 400uF
2	capacitor	(2) EGT687M1EG1 6RR**P	C7	25V/680uF	Over 400uF

# Firmware & EDID Programming SOP

Please visit the website below for software or firmware updates and service support.

website: <https://www.viewsonic.com/global/support/warranty/>



# Troubleshooting Guide

This section describes some common problems that you may experience when using the monitor.

Problem or Issue	Possible Solutions
No power	<ul style="list-style-type: none"><li>• Make sure you have turned on the monitor by pressing the <b>Power</b> button.</li><li>• Make sure the power cord is properly and securely connected to the monitor and power outlet.</li><li>• Plug another electrical device into the power outlet to verify that the outlet is supplying power.</li></ul>
Power is On, but no image appears on screen	<ul style="list-style-type: none"><li>• Make sure the video cable connecting the monitor to the computer is properly and securely connected.</li><li>• Adjust the brightness and contrast settings.</li><li>• Make sure the correct input source is selected.</li></ul>
Wrong or abnormal colors	<ul style="list-style-type: none"><li>• If any colors (red, green, or blue) are missing, check the video cable to make sure it is properly and securely connected. Loose or broken pins in the cable connector could cause an improper connection.</li><li>• Connect the monitor to another computer.</li></ul>
Screen image is too light or dark	<ul style="list-style-type: none"><li>• Adjust brightness and contrast settings via the OSD Menu.</li><li>• Reset the monitor to factory settings.</li></ul>
Screen image cuts in and out	<ul style="list-style-type: none"><li>• Make sure the correct input source is selected.</li><li>• Check for bent or broken pins in the video cable connector.</li><li>• Make sure the video cable connecting the monitor to the computer is properly and securely connected.</li></ul>
Screen image is blurred	<ul style="list-style-type: none"><li>• Adjust the resolution to the correct Aspect Ratio.</li><li>• Reset the monitor to factory settings.</li></ul>
The screen isn't centered correctly	<ul style="list-style-type: none"><li>• Adjust the horizontal and vertical controls via the OSD Menu.</li><li>• Check the Aspect Ratio.</li><li>• Reset the monitor to factory settings.</li></ul>
The screen appears yellow	<ul style="list-style-type: none"><li>• Make sure the "Blue Light Filter" is Off.</li></ul>



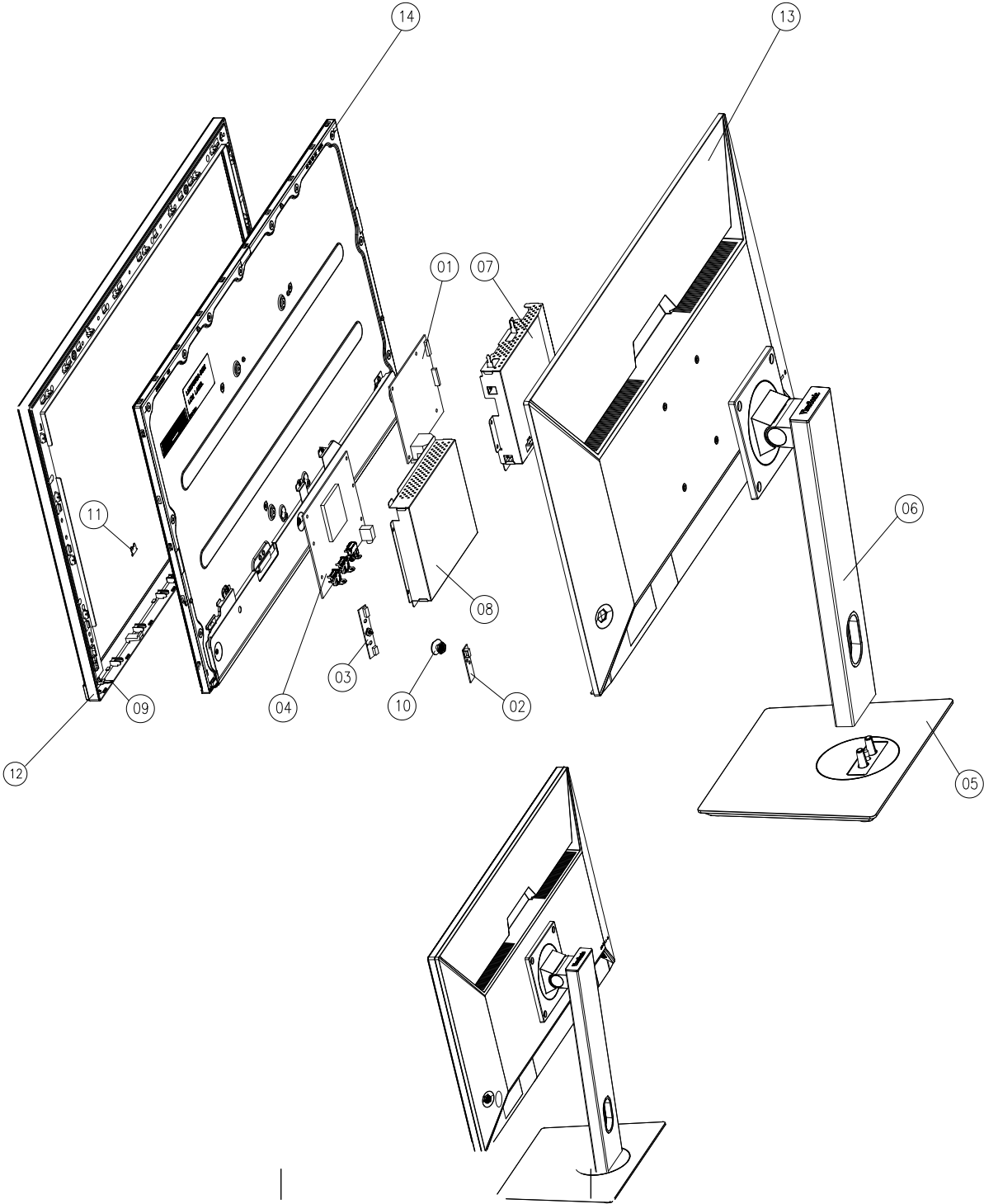
Problem or Issue	Possible Solutions
The OSD Menu does not appear on the screen/the OSD controls are inaccessible	<ul style="list-style-type: none"> <li>• Check whether the OSD Menu is locked.</li> <li>• Turn off the monitor, unplug the power cord, plug it back in, and then turn on the monitor.</li> <li>• Reset the monitor to factory settings.</li> </ul>
Control panel keys do not work	<ul style="list-style-type: none"> <li>• Press only one key at a time.</li> <li>• Restart the computer.</li> </ul>
Some menus aren't selectable in the OSD	<ul style="list-style-type: none"> <li>• Adjust the ViewMode or the input source.</li> <li>• Reset the monitor to factory settings.</li> </ul>
No audio output	<ul style="list-style-type: none"> <li>• If using ear-/headphones, ensure the mini stereo jack is connected.</li> <li>• Make sure the volume is not muted, nor set to 0.</li> <li>• Check the Audio Input setting.</li> </ul>
The monitor will not adjust	<ul style="list-style-type: none"> <li>• Make sure there are no obstructions near or on the monitor, and that there is adequate spacing.</li> <li>• For more information, see "Adjusting the Viewing Angle".</li> </ul>
USB devices connected to the monitor do not work	<ul style="list-style-type: none"> <li>• Make sure the USB cable is connected properly.</li> <li>• Try changing to another USB port (if applicable).</li> <li>• Some USB devices require a higher electric current; connect the device directly to the computer.</li> </ul>
The external device is connected, but no image appears on the screen	<ul style="list-style-type: none"> <li>• Make sure the Power is On</li> <li>• Adjust brightness and contrast via the OSD Menu.</li> <li>• Check the connecting cable and make sure it is properly and securely connected. Loose or broken pins in the cable connector could cause an improper connection.</li> </ul>

# Exploded Diagram

## EXPLODED PARTS LIST (VX2758A-2K-PRO-2 )

ViewSonic Model Number:VS19757

Item	ViewSonic P/N	Ref. P/N	Description	Q'ty
1	B-00016925	X01KDL68WMPBR	电源板 P/B KDL68W-01 12V2.5A 45V/720mA R75 1KΩ MPRT EMI对策修改 KD REACH	1
2	B-00016727	S02GGK2700BBR	指示灯板 GK27 Led Board Rev: 2.1 40*12*1mm Blue/Orang BS REACH	1
3	B-00016530	S01GGK2700B1R	按键板 按键板GK27 rocker Board REV: 2.0 修改PCB 结构Layout BS REACH	1
4	B-00016924	FWQ27AMNB0401(S03LRM9800BER)	主板 M.MT9800E16 A DC+DP+HDMI*2 L/Out 1 2V RGB Led NO AMP 8Vbo 增加 CL27 HK REACH	1
5	C-00015917	B06NM270WTB2R	底座 万泰升降底座组立, 全黑色, 定位柱加强, REACH	1
6	C-00015918	C04NM270WTB5R	万泰升降支架组立 万泰商务款升降支架组立, 4kg, 头部黑色+ 支架铁灰色, (100*100普通VESA), REACH	1
7	HW-00012504	C07NI315CXZ2R	电源板便当盒 NI31.5电源板便当盒带喇叭挂耳 端口加宽 REACH	1
8	HW-00012578	C07ND001TDZTR	主板便当盒 GK27主板便当盒, 2H1DP1Audio out, REACH	1
9	PL-00009748	B08NI315KBZ0R	NI315-K导光柱 NI315-K导光柱, PC,透明高亮, REACH	1
10	PL-00009747	B07GK270XX00R	按键 GK27按键, ABS黑色, MT11015, REACH	1
11	M-00010495	Z090100VSC01R	logo Viewsonic logo 彩色铭牌 (H=9.98mm;T0.6)REACH	1
12	C-00015650	B02GK270PD01R	前框 GK27前框 - A款, 黑色ABS, MT11015, REACH	1
13	C-00015651	B03GE270XXB0R	后壳 GE27后壳 - B款, (搭配升降支架) 黑色ABS , MT11020+拉丝纹, REACH	1
14	E-00014853	T01270F2IN06R	液晶屏 27" PANEL INNOLUX (M270KCJ-Q7B C4) 2560×1440 300cd/m <sup>2</sup> REACH	1



## \* *Reader's Response* \*

Dear Readers:

Thank you in advance for your feedback on our Service Manual, which allows continuous improvement of our products. We would appreciate your completion of the Assessment Matrix below, for return to ViewSonic Corporation.

### Assessment

A. What do you think about the content of this Service Manual?

<i>Unit</i>	<i>Excellent</i>	<i>Good</i>	<i>Fair</i>	<i>Bad</i>
<b>Maintenance and Clean</b>				
<b>Product Specifications</b>				
<b>OSD Settings and Shortcut Keys</b>				
<b>Tool&amp;Equipment</b>				
<b>Disassembly Procedure</b>				
<b>Electronic Circuit Block Diagram</b>				
<b>PCB Layout Diagrams</b>				
<b>Firmware &amp; EDID Programming SOP</b>				
<b>Troubleshooting Guide</b>				
<b>Exploded Diagram</b>				

B. Are you satisfied with this Service Manual?

<i>Item</i>	<i>Excellent</i>	<i>Good</i>	<i>Fair</i>	<i>Bad</i>
<b>1. Service Manual Content</b>				
<b>2. Service Manual Layout</b>				
<b>3. The form and listing</b>				

C. Do you have any other opinions or suggestions regarding this service manual?

### Reader's basic data:

<b>Name:</b>		<b>Title:</b>	
<b>Company:</b>			
<b>Add:</b>			
<b>Tel:</b>		<b>Fax:</b>	
<b>E-mail:</b>			

After completing this form, please return it to ViewSonic Quality Assurance in the Taiwan at facsimile 886-2-8242-3660.