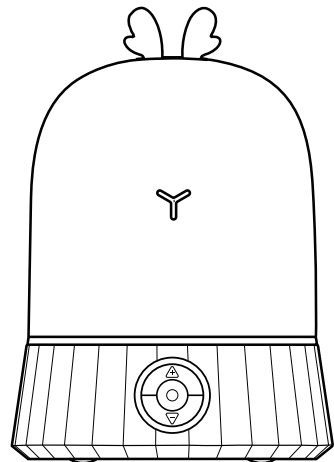


# ELK MUSIC PROJECTION LAMP

## Operating instruction

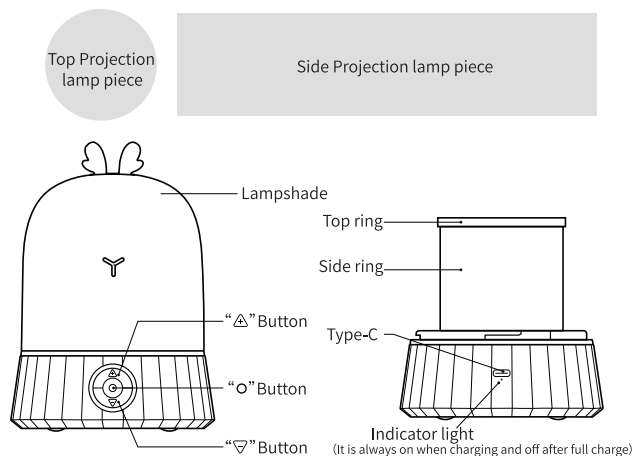


Thank you for using the product  
Please read the manual for safety before using the product

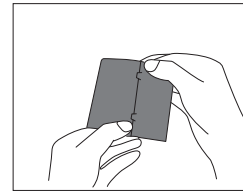
## 1. Product parameters

ProductName:Elk Music Projection Lamp	Rated Power:2W Max
ModelNo.:QW-D16	Product Size:120*120*172mm
Material:ABS/PP/PCBA	Product Weight:333g (Music Box Edition)
Battery Voltage:3.7V	354g (Bluetooth version)
Battery Capacity:1200mAh	Executive Standard:GB7000.204-2008
Battery Power:4.44Wh	GB7000.1-2015
Input voltage/current:DC5.0V/1000mA(±20%)	Inspection:Qualified
Rated Current:700mA Max(±20%)	Place of origin:Shenzhen China

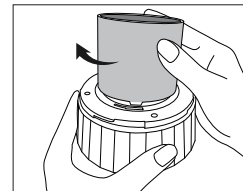
## 2. Product structure



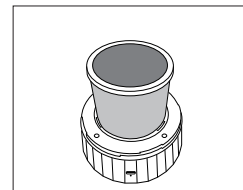
## 3. Installation steps



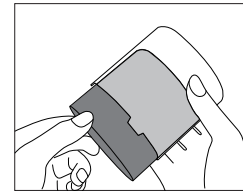
1. Tear off the protective film of the projection lamp piece and fasten it.



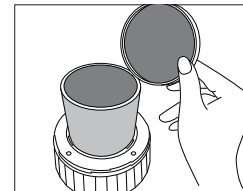
3. Align the buckle rotate left to click.



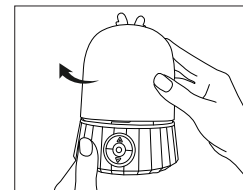
5. Cover the top ring.



2. Bend the projection lamp into the side ring.



4. Put the matching film into the top ring.



6. Align the buckle and rotate left to complete.

## 4. Functional operation

### Elk music projection lamp (music box version)

#### Button 'O'

1. Short press to turn on the light, short press again to switch the light, and short press 5 times to turn off the light.
  2. Long press to turn on the music box music, the default setting is the music loops endlessly, long press again to turn off the music.
  3. Double-click the button to turn on and turn off the rotation. If turn off the light, the rotation will turn off together
- Note: The rotation function can only be turned on when the light mode is turned on.

#### Button '+'

1. When the music box mode is turned on, short press is the previous song, long press increases the volume.
2. When the music is turned off, only the light is turned on, long press to increase the brightness.

#### Button '-'

1. When the music box mode is turned on, short press is the next song, long press reduces the volume.
2. When the music is turned off, only the light is turned on, long press to reduce the brightness.

If music and lights are turned on at the same time, adjust the volume first.

After turning off the work, the brightness and volume will be restored to the default settings on the next boot.

### Elk projection lamp (Bluetooth version)

#### • Bluetooth connection

1. Long press the button 'O' to turn on the Bluetooth function, accompanied by a beep "Bluetooth mode". (After turning on Bluetooth, if it is not connected for use within ten minutes, the Bluetooth function will automatically turn off with a beep. If the music is turned on at this time, the prompt sound is "disconnected", if the light is not turned on at this time, the prompt sound is "power off").
2. The mobile phone turns on the Bluetooth and connect QW-D16, when the connection is successful, it will be accompanied by a sound "connect".

#### Button 'O'

1. Short press to turn on the light to switch the light and turn off the light.
2. When the light is not turned on, long press to turn on the Bluetooth mode, accompanied by the prompt sound "Bluetooth mode", long press again to shut down, accompanied by the prompt sound "power off".

When the light is turned on, long press to turn on and turn off the Bluetooth mode,

accompanied by a prompt sound, the Bluetooth connection prompt sound is "Bluetooth mode", and the Bluetooth disconnection prompt sound is "disconnected".

3. Double-click the button to turn on and off the rotation. (Note: The rotation function can only be turned on when the light mode is turned on. After the rotation is turned on, if the light is turned off, the rotation will also be turned off.)

#### Button '+'

1. When Bluetooth is connected, short press is the previous song, long press is to increase the volume.
2. When the Bluetooth is not connected and only the light is turned on, long press to increase the brightness.
3. When Bluetooth and light are turned on at the same time, long press is to increase the volume.

#### Button '-'

1. When Bluetooth is connected, short press is the next song, long press is to reduce the volume.
2. When the Bluetooth is not connected and only the light is turned on, long press to reduce the brightness.
3. When Bluetooth and light are turned on at the same time, long press is to reduce the volume.

After turning off the work, the brightness and volume will be restored to the default settings on the next boot.

## 5. Precautions

1. Please use a qualified power adapter (5V).
2. The light source of this lamp cannot be replaced. If the lamp source expires, please replace the whole lamp.
3. Do not use in humid and high temperature environments.
4. If not use it for a long time, please turn off the main power switch; it is recommended to charge the lamp every 30 days to avoid shortening the life of the lithium battery after being idle for too long.
5. Do not place this lamp on a flat surface greater than six degrees.
6. The equipment is suitable for tropical climate conditions.
7. The maximum altitude for the device depends on the power supply.
8. Do not disassemble, impact, squeeze or throw into the fire. In case of severe swelling, do not continue to use;
9. Do not place in high temperature environment.

## 6. Product standard



**FCC Caution:**

This device complies with part 15 of the FCC Rules. Operation is subject to the following two conditions: (1) This device may not cause harmful interference, and (2) this device must accept any interference received, including interference that may cause undesired operation.

Any Changes or modifications not expressly approved by the party responsible for compliance could void the user's authority to operate the equipment.

**Note:** This equipment has been tested and found to comply with the limits for a Class B digital device, pursuant to part 15 of the FCC Rules. These limits are designed to provide reasonable protection against harmful interference in a residential installation. This equipment generates uses and can radiate radio frequency energy and, if not installed and used in accordance with the instructions, may cause harmful interference to radio communications. However, there is no guarantee that interference will not occur in a particular installation. If this equipment does cause harmful interference to radio or television reception, which can be determined by turning the equipment off and on, the user is encouraged to try to correct the interference by one or more of the following measures:

- Reorient or relocate the receiving antenna.
- Increase the separation between the equipment and receiver.
- Connect the equipment into an outlet on a circuit different from that to which the receiver is connected.
- Consult the dealer or an experienced radio/TV technician for help.

The device has been evaluated to meet general RF exposure requirement. The device can be used in portable exposure condition without restriction.