



# HAMILTON-C6

## Installation Guide

**REF** 160021

Software version 1.1.x

627075/04 | 2020-12-07

0197

**HAMILTON  
MEDICAL**  
Intelligent Ventilation since 1983



# Installation Guide

## HAMILTON-C6

2020-12-07

627075/04

---

© 2020 Hamilton Medical AG. All rights reserved.  
Printed in Switzerland.

No part of this publication may be reproduced, stored in a database or retrieval system, or transmitted in any form or by any means, electronic, mechanical, or by photocopying, recording, or otherwise, without prior written permission of Hamilton Medical AG.

This document may be revised, replaced, or made obsolete by other documents by Hamilton Medical AG at any time and without notice. Ensure that you have the most current applicable version of this document; if in doubt, contact the technical support department of Hamilton Medical AG, Switzerland. While the information set forth herein is believed to be accurate, it is not a substitute for the exercise of professional judgment.

Nothing in this document shall limit or restrict in any way Hamilton Medical AG's right to revise or otherwise change or modify the equipment (including its software) described herein, without notice. In the absence of an express, written agreement to the contrary, Hamilton Medical AG has no obligation to furnish any such revisions, changes, or modifications to the owner or user of the equipment (including software) described herein.

The equipment must be operated, serviced, or upgraded only by trained professionals. Hamilton Medical AG's sole responsibility with respect to the equipment and its use is as stated in the limited warranty provided in the device *Operator's Manual*.

Hamilton Medical AG shall not be liable for any loss, cost, expense, inconvenience, or damage that may arise out of misuse of the product, or if non-Hamilton Medical AG parts were used when replacing parts, or if serial numbers were amended, deleted, or removed.

If returning parts to Hamilton Medical AG, be sure to use the standard Hamilton Medical returned goods authorization (RGA) procedure. Disposal of parts shall follow all local, state, and federal regulation with respect to environmental protection.

Hamilton Medical AG will make available, on request, circuit diagrams, component parts lists, descriptions, calibration instructions, or other information that will assist appropriately trained personnel to repair those parts of the equipment designated by Hamilton Medical AG to be repairable.

For all proprietary as well as third-party trademarks used by Hamilton Medical AG, see [www.hamilton-medical.com/trademarks](http://www.hamilton-medical.com/trademarks). Product and/or company names marked with a <sup>§</sup> may be the trademarks and/or registered trademarks of their respective owners, including but not limited to Aerogen<sup>§</sup>, Nihon Kohden<sup>§</sup>, Masimo<sup>§</sup>, Masimo SET<sup>§</sup>, Masimo rainbow SET<sup>§</sup>, Respironics<sup>§</sup>.

#### **Manufacturer**

Hamilton Medical AG  
Via Crusch 8, CH-7402 Bonaduz,  
Switzerland  
Phone: (+41) 58 610 10 20  
Fax: (+41) 58 610 00 20  
[info@hamilton-medical.com](mailto:info@hamilton-medical.com)  
[www.hamilton-medical.com](http://www.hamilton-medical.com)

#### **Distributor in USA**

Hamilton Medical, Inc.  
4990 Energy Way, P.O. Box 30008  
Reno, NV 89520  
Phone: (775) 858-3200  
Toll-free: (800) 426-6331  
Fax: (775) 856-5621  
[marketing@hamilton-medical.net](mailto:marketing@hamilton-medical.net)



# Table of contents

---

Preface .....	v
Document History .....	vii
Chapter 1 Ventilator Unit and Interaction Panel Overview .....	1
Chapter 2 Trolley Assembly .....	5
Chapter 3 Trolley Solution Assembly .....	7
Chapter 4 Shelf Mount Solution Assembly .....	11
Chapter 5 Combined Shelf Mount Solution Assembly .....	13
Chapter 6 Interaction Panel Mounting Options .....	19
Chapter 7 Cablewrap Assembly .....	23
Chapter 8 Communication Board Assembly .....	27
Chapter 9 IntelliCuff Integration Kit Assembly .....	31
Chapter 10 Paramagnetic O2 Sensor Assembly .....	35
Chapter 11 HAMILTON-H900 Integration Kit Assembly .....	39
Chapter 12 DISS/NIST Connector Assembly .....	43
Chapter 13 Bed Docking System Assembly .....	45
Chapter 14 Water Bottle Holder with Quick-lock Assembly .....	47
Chapter 15 Tubing Support Arm with Quick-lock Assembly .....	49
Chapter 16 Support Arm with Quick-positioning Assembly .....	51
Chapter 17 O2 Cylinder Holder Bracket Assembly .....	53
Chapter 18 Basket Assembly .....	55
Chapter 19 O2 Supply Hose Hanger (Incl. Cable Clips) .....	57
Chapter 20 Options Stickers .....	59
Chapter 21 HAMILTON-C6 Ventilator Testing and Acceptance Report .....	61

### HAMILTON-C6 ventilator documentation suite

This guide is part of a documentation suite that includes, among others, the following documents:

Document title	Description
<i>HAMILTON-C6 Installation Guide (this guide)</i>	Provides installation and setup information for the ventilator and the trolley.
<i>Operator's Manual</i>	Provides detailed information about the setup and use of the HAMILTON-C6 ventilator.
<i>INTELLiVENT-ASV Operator's Manual</i>	Provides setup and use information for the INTELLi-VENT-ASV ventilation mode.
<i>Pulse Oximetry Instructions for Use</i>	Provides setup and use information for using SpO2 and related sensors with the ventilator.
<i>Volumetric Capnography User Guide</i>	Provides reference information for CO2 capnography.
<i>HAMILTON-H900 Instructions for Use</i>	Provides specifications, and setup and use information for the HAMILTON-H900 humidifier.
<i>IntelliCuff Instructions for Use</i>	Provides specifications, and setup and use information for the IntelliCuff cuff pressure controller.
<i>Aerogen Solo/Aerogen Pro Instructions for Use</i>	Provides specifications, and setup and use information for the Aerogen Solo and Aerogen Pro nebulizers.
<i>Communication Interface User Guide</i>	Provides an overview of the communication interface, including how to connect the ventilator to external devices for data communication and support for nurse call remote alarms.
<i>Service Manual</i>	Provides information about installing and setting up the medical equipment, as well as additional technical and servicing information for the ventilator.
<i>EMC Declarations Guide</i>	Provides emissions and EMC-related safety and use information.

Be sure to read the documentation before using the device or accessories.

To download the latest version of this manual or other documents, free of charge, visit the MyHamilton website. To register, go to: <https://www.hamilton-medical.com/MyHamilton>

Hamilton Medical offers the Hamilton Medical College, which provides a variety of learning modules free of charge. To register, go to: <http://college.hamilton-medical.com/>


Intended use of this guide

This Installation Guide provides step-by-step instructions on how to install the HAMILTON-C6 ventilator unit and its accessories efficiently and safely


The HAMILTON-C6 Installation Guide is intended for hospital technicians, biomedical engineers, or certified service technicians/engineers only.

Conventions used in this guide

Safety messages are displayed as follows:

 **WARNING**

A **WARNING** alerts the user to the possibility of injury, death, or other serious adverse reactions associated with the use or misuse of the device.

 **CAUTION**

A **CAUTION** alerts the user to the possibility of a problem with the device associated with its use or misuse, such as device malfunction, device failure, damage to the device, or damage to other property.

**NOTICE**

A **NOTICE** emphasizes information of particular importance.

Intended use of this guide

The HAMILTON-C6 ventilator is intended to provide positive pressure ventilatory support to adults and pediatrics, and optionally infants and neonates.

Intended areas of use:

- Health care facilities
- During transfer of ventilated patients within health care facilities

The HAMILTON-C6 ventilator is a medical device intended for use by qualified, trained personnel under the direction of a physician and within the limits of its stated technical specifications.



160021

### Document history

Document version No.	Amendment	Date of issue
00	First release	August 2017
01	<ul style="list-style-type: none"><li>– Interaction panel mounting options: rail mount clamp option added.</li><li>– Testing and acceptance report added.</li></ul>	September 2017
02	<ul style="list-style-type: none"><li>– Combined shelf mount solution for IP, VU and tubing support arm with quick-lock added</li><li>– IP mounting options updated: VESA mount adapter plate added to VESA mount option.</li><li>– Trolley basket assembly added.</li><li>– Oxygen supply hose hanger added.</li></ul>	October 2019
03	<ul style="list-style-type: none"><li>– Electrical safety tests made mandatory after the initial installation of the HAMILTON-C6 ventilator.</li><li>– Electrical safety tests added to <i>Testing and Acceptance Report for Initial Installation</i>.</li><li>– Contents and part numbers revised.</li></ul>	September 2020
04	<ul style="list-style-type: none"><li>– Bed docking system assembly added.</li><li>– Contents and part numbers revised.</li></ul>	December 2020

HAMILTON-C6 Installation Guide

Ventilator Unit and Interaction Panel Overview

English | 627075/04

REF 160021

Components

- A Interaction Panel (IP) / monitor
- B Ventilator Unit (VU)

**Note:** The ventilator power cable is country-specific. Order the power cable specific to the mains power outlet of your country.

A 3-meter (PN 160785) or a 10-meter (PN 160786) VU-IP cable is also available.

Safety information

**WARNING**

Turn off the VU and disconnect the power cable from the mains power supply before you start the installation. This will prevent possible electric shock or damage to the IP or the VU.

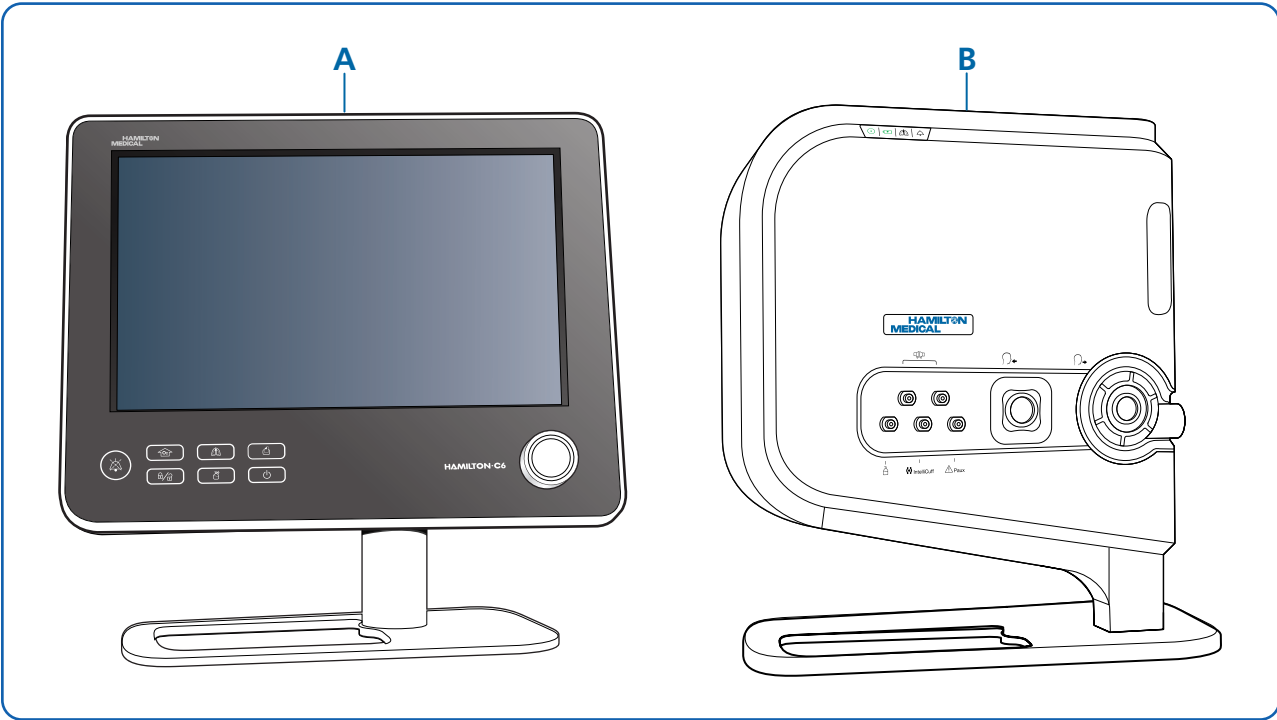
Tests and checks after installation

You must do the electrical safety tests after the initial installation of the HAMILTON-C6 ventilator.

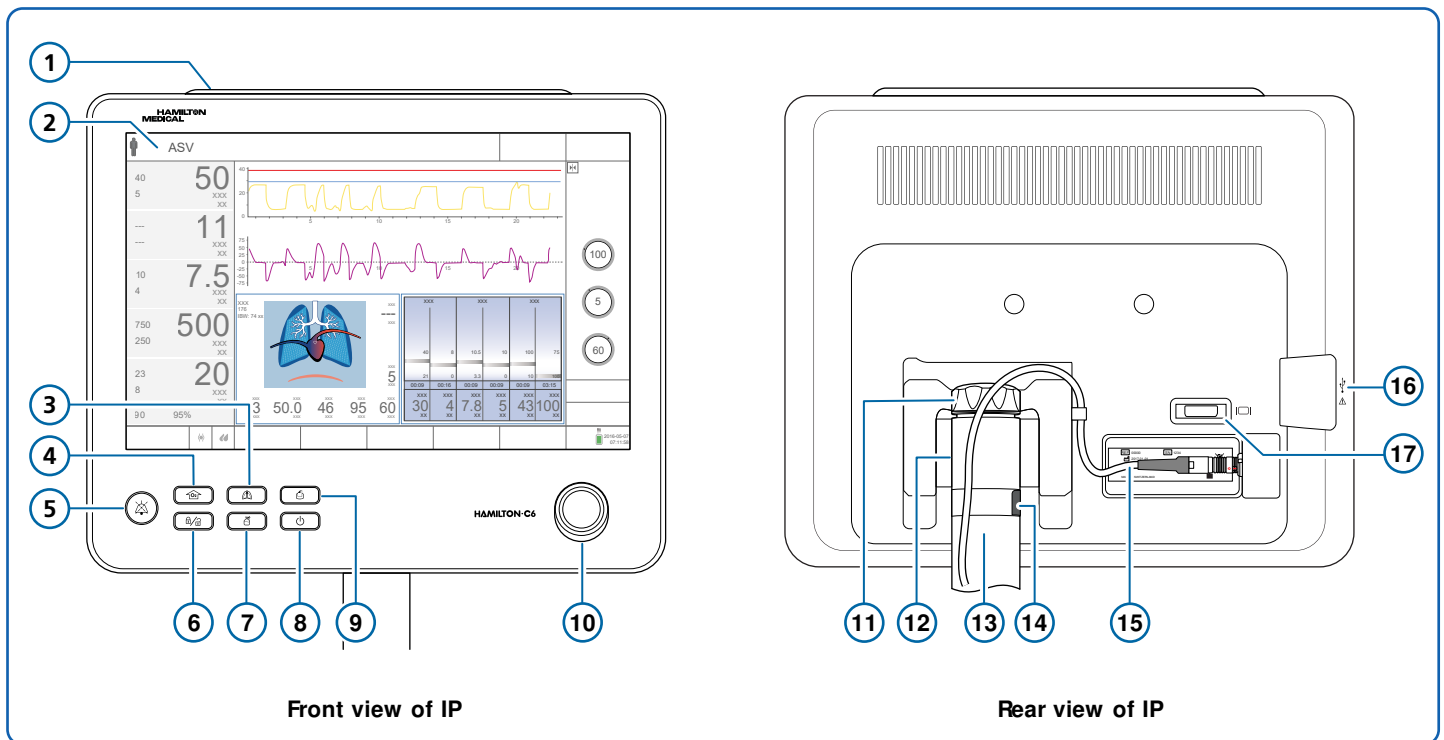
Configure the HAMILTON-C6 ventilator at the place of installation according to the institution's or hospital's protocol.

For additional details on the electrical safety tests and preoperational checks, refer to the *HAMILTON-C6 Service Manual* (PN 627038) and the *HAMILTON-C6 Operator's Manual* (PN 624945).

Fill in the HAMILTON-C6 ventilator *Testing and Acceptance Report* after the initial installation. See Chapter 21.

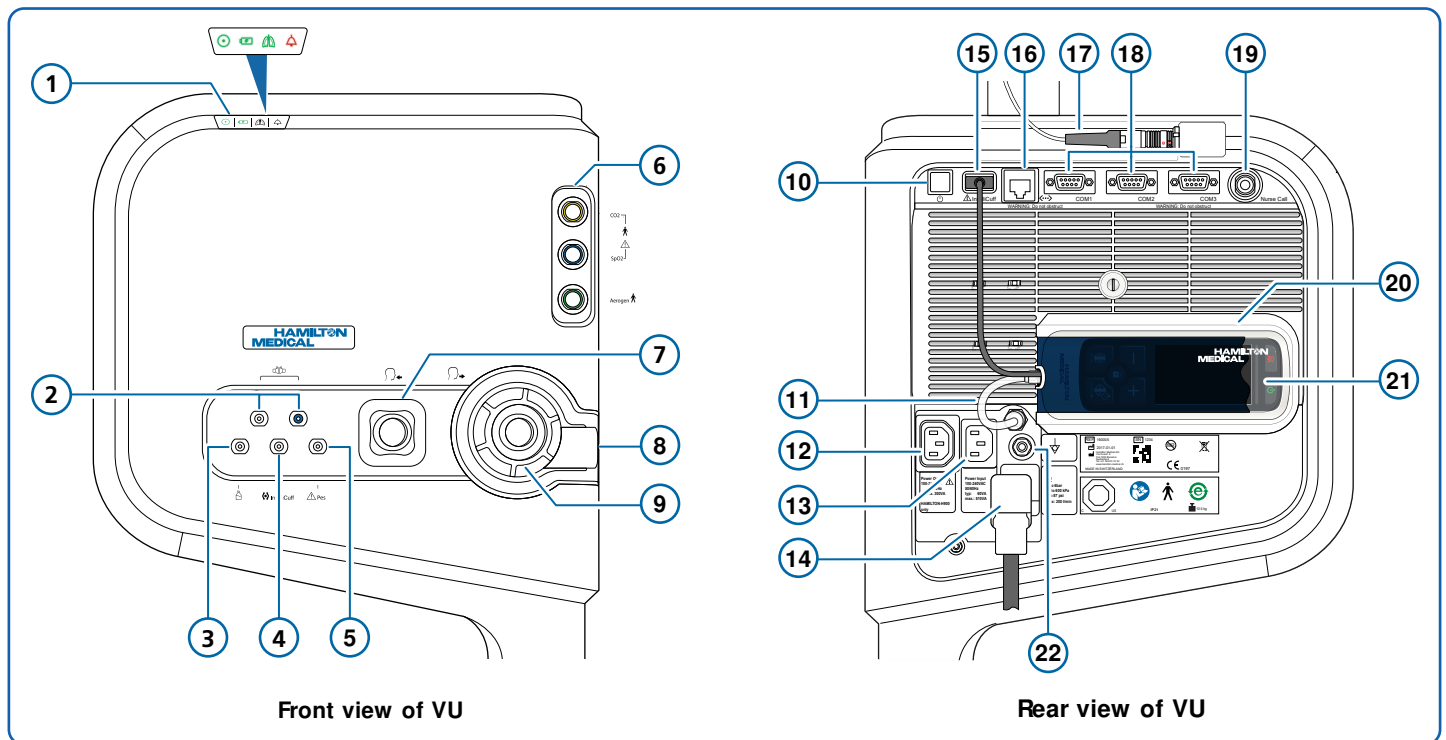


## Interaction Panel Overview



- |   |                     |    |   |
|---|---------------------|----|---|
| 1 | Alarm lamp          | 10 | Press-and-Turn (P&T) knob                             |
| 2 | Touchscreen display | 11 | Adjustment knob for IP tilt and swivel                |
| 3 | Manual breath key   | 12 | Tilt and swivel mount assembly                        |
| 4 | O2 enrichment key   | 13 | IP mounting post                                      |
| 5 | Alarm silence key   | 14 | Lock/release button for IP mount                      |
| 6 | Screen lock/unlock  | 15 | VU-IP cable (connected between IP and VU)             |
| 7 | Nebulizer key       | 16 | USB port  |
| 8 | Power/Standby key   | 17 | DVI signal output port<br>(for training purpose only) |
| 9 | Print screen key    |    |   |

## Ventilator Unit Overview



- |    |   |    |   |
|----|---|----|---|
| 1  | Status indicator panel  | 12 | HAMILTON-H900 humidifier AC power output                      |
| 2  | Flow sensor ports   | 13 | HAMILTON-C6 ventilator AC power input                         |
| 3  | Pneumatic nebulizer port  | 14 | High-pressure oxygen port for DISS or NIST connector          |
| 4  | IntelliCuff port  | 15 | USB port for IntelliCuff communication cable                  |
| 5  | Pes port  | 16 | LAN port (internal use only)                                  |
| 6  | Communication board with CO <sub>2</sub> , SpO <sub>2</sub> , and, Aerogen® ports (optional)* | 17 | VU-IP cable (connected between IP and VU)                     |
| 7  | To patient port   | 18 | RS-232 ports: COM 1, COM 2, and COM 3**                       |
| 8  | From patient port   | 19 | Nurse call port   |
| 9  | Expiratory valve set  | 20 | IntelliCuff housing   |
| 10 | Power/Standby button  | 21 | Integrated IntelliCuff with communication cable and cuff tube |
| 11 | IntelliCuff cuff tube   | 22 | Potential equalization conductor                              |

\* When the communication board is not installed, this area is covered with a blank cover.

\*\* COM 3 port is reserved only for HAMILTON-H900 humidifier communication cable.

---

Blank Page



# HAMILTON-C6 Installation Guide

## Trolley Assembly

English | 627075/04

REF 160130

### Required tools

Allen key (size: 6 mm)

### Safety information

#### ⚠ WARNING

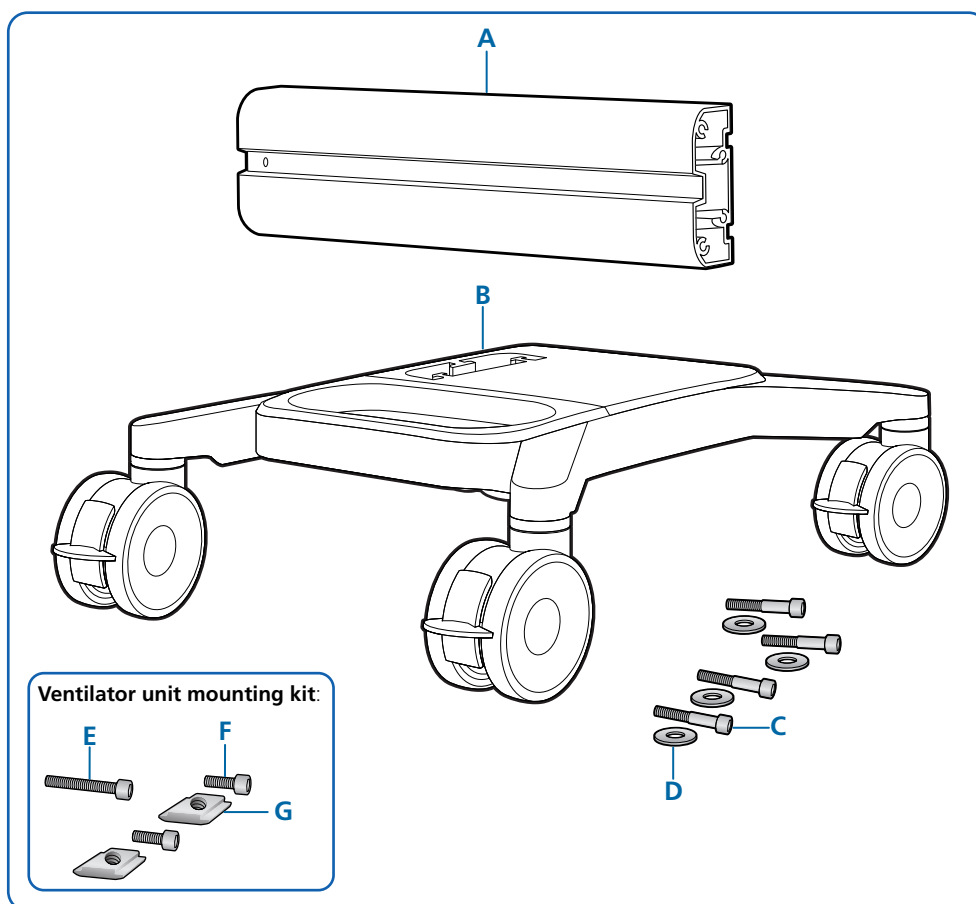
- The weight of the trolley package is 24 kg (53 lb). Two persons are necessary to lift the trolley or use an applicable lifting equipment.
- Do not put more than the permitted weight on the trolley. The maximum permitted weight (safe working load) on the trolley is 80 kg (176 lb).

### Components

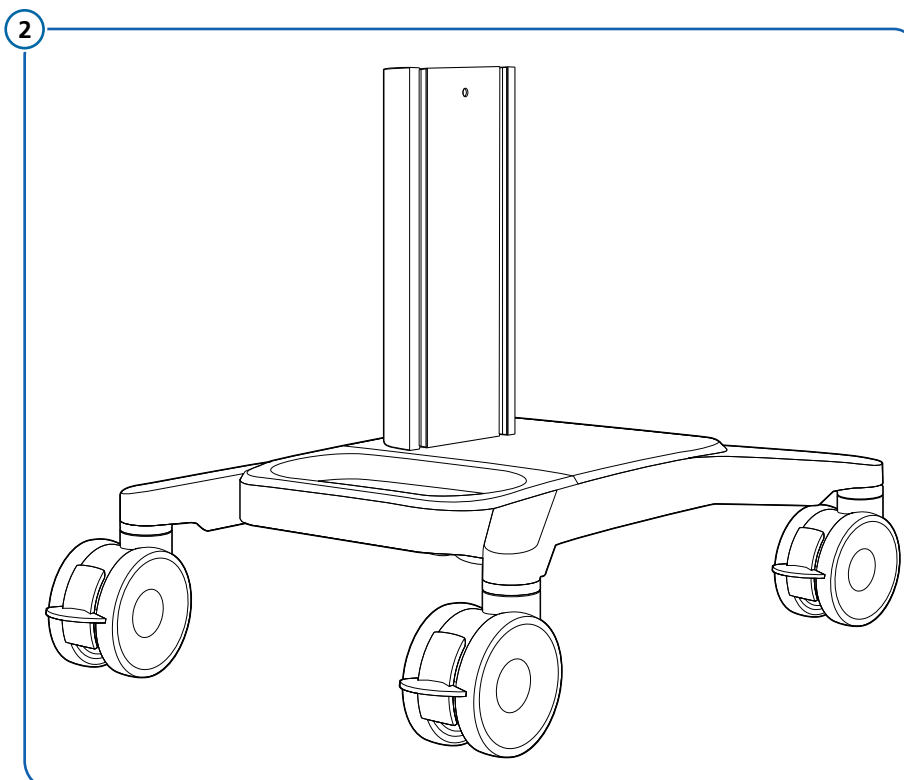
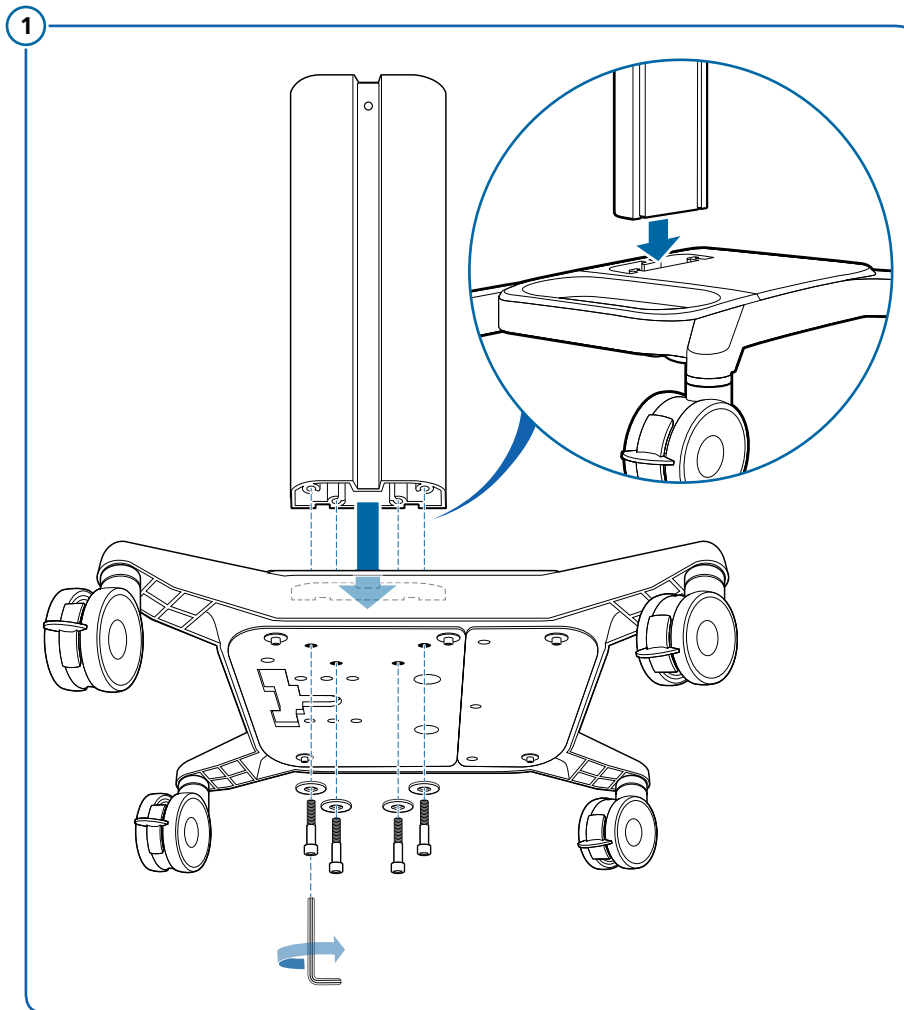
- A** 1 x Trolley column
- B** 1 x Trolley base
- C** 4 x Hex socket cap screws, M8 x 45 mm
- D** 4 x Washers A2 stainless steel, 25 (OD) x 8.4 (ID) mm
- E** 1 x Hex socket cap screws, M6 x 50 mm\*
- F** 2 x Hex socket cap screws, M6 x 14 mm\*
- G** 2 x Slot-nuts\*

\* Screws and slot-nuts for mounting the HAMILTON-C6 ventilator unit on the trolley.

**Note:** See the Trolley Configuration Chapter for details on how to mount the ventilator unit on the trolley.



## How to assemble the HAMILTON-C6 ventilator trolley



### Required tools

Slotted screwdriver (size: # 3 or # 4)

Allen key (sizes: 5 mm and 6 mm)

### Components

**A** 1 x Interaction Panel (IP) / monitor\*

**B** 1 x Ventilator Unit (VU)\*

**C** 1 x IP mounting kit (PN 160181)

Contains:

**C1** 1 x IP mounting post

**C2** 1 x Hex socket cap screw, M8 x 55 mm

**C3** 1 x Dock washer, 32 (OD) x 9 (ID) x 7 (H) mm

\* Not included. Must be ordered separately with PN 160021.

**Note:** See the Trolley Assembly Chapter for details on how to assemble the trolley.

The ventilator power cable is country-specific. Order the power cable specific to the mains power outlet of your country.

A VU-IP cable (PN 952300 (0.65 m), or PN 160785 (3 m), or PN 160786 (10 m)) is required for the installation. Not included.

### Safety information

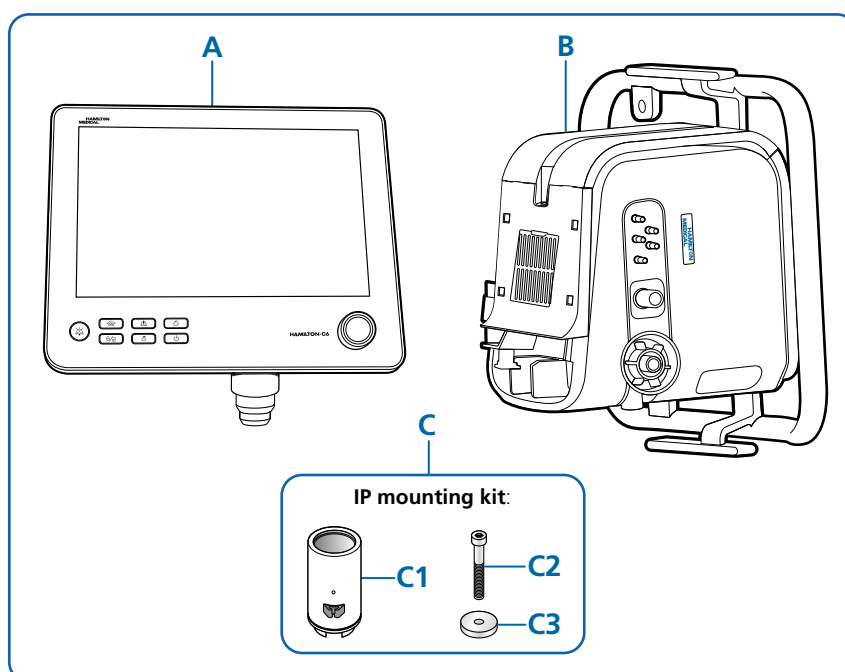
#### WARNING

The weight of the package for the IP and the VU with rail is 20 kg (44 lb). Two persons are necessary to lift the IP and the VU package or use an applicable lifting equipment.

### Tests and checks after installation

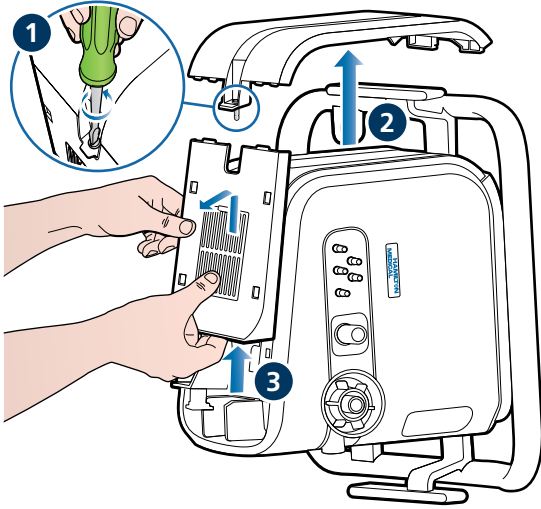
For details on the electrical safety tests and preoperational checks on the HAMILTON-C6 ventilator, see Chapter 1 – Ventilator Unit and Interaction Panel Overview.

Fill in the HAMILTON-C6 ventilator *Testing and Acceptance Report* after the initial installation. See Chapter 21.

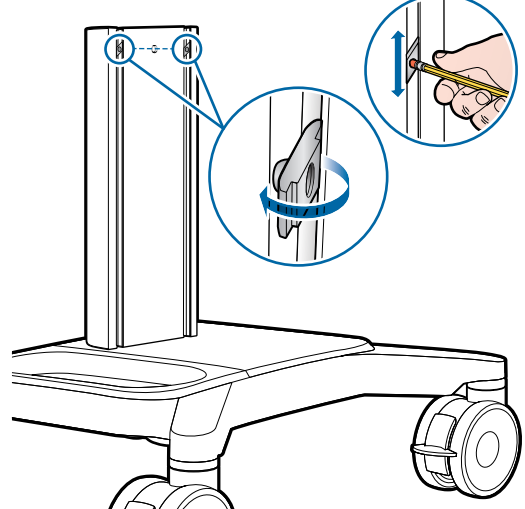


## How to assemble the VU on the trolley column

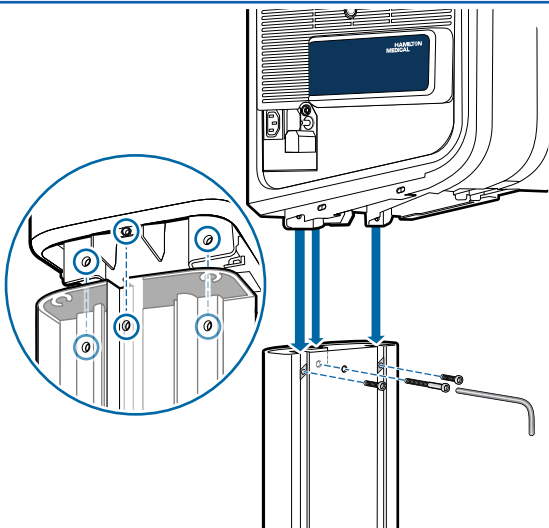
1



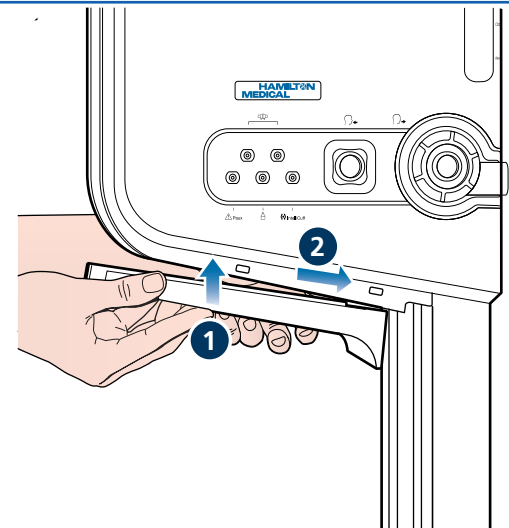
2



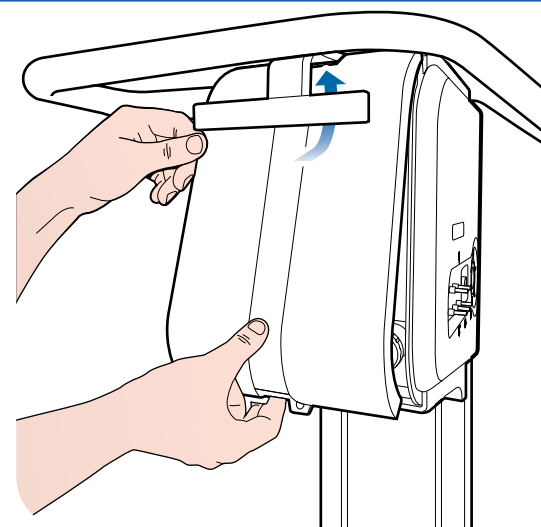
3



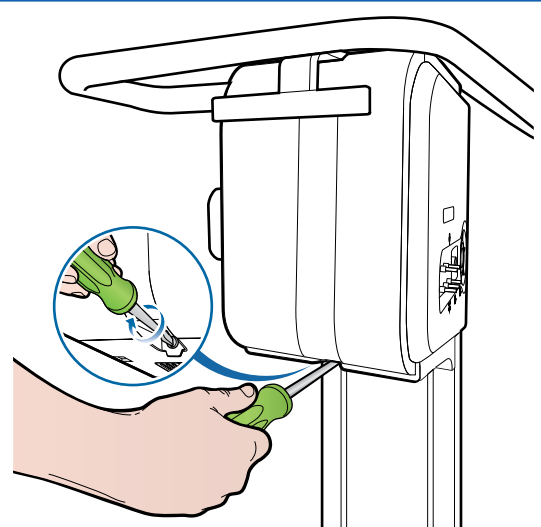
4



5

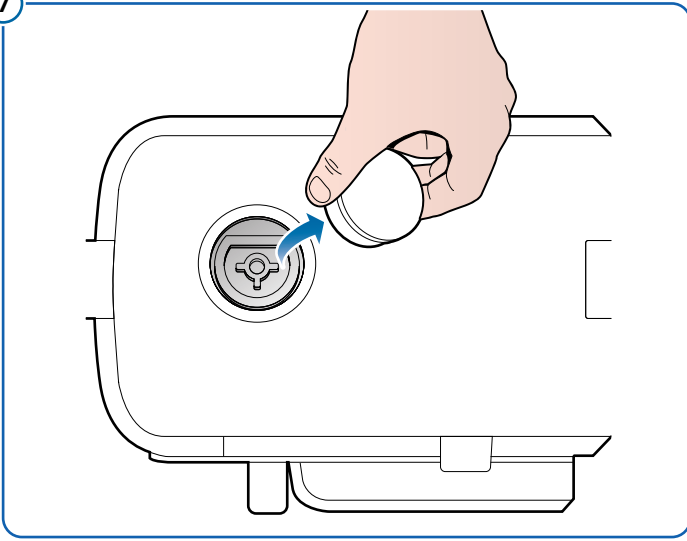


6

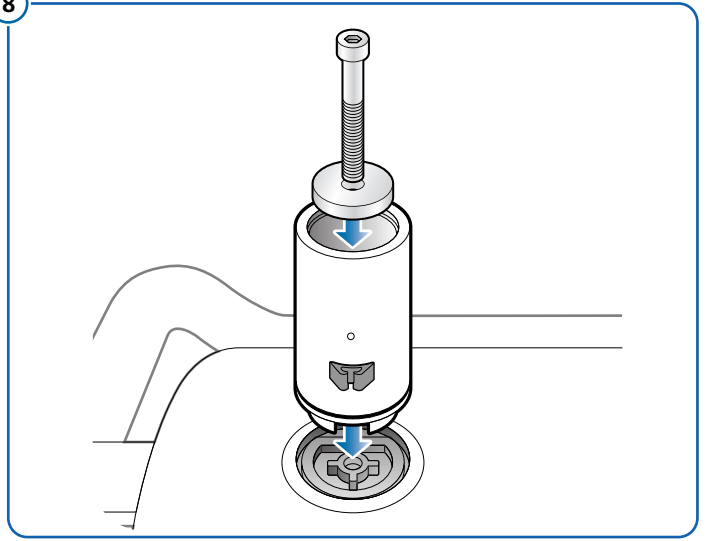


## How to assemble the IP on the VU

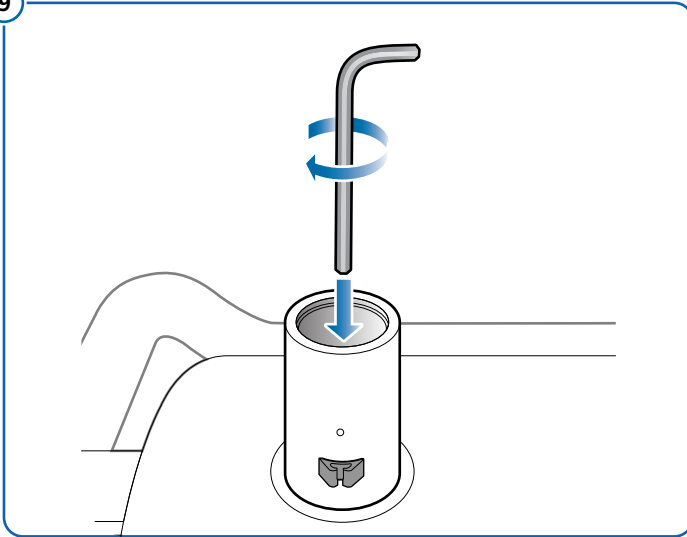
7



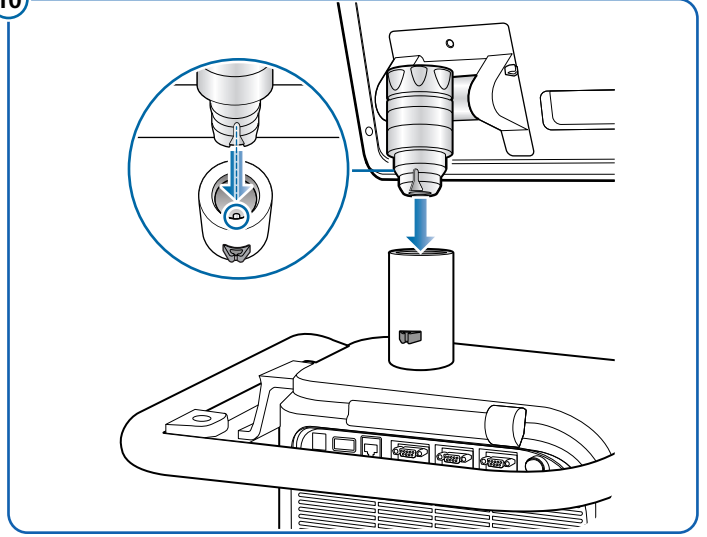
8



9



10



11



---

Blank Page

### Required tools

Torx T20 screwdriver for cable clip assembly

### Components

- A** Interaction Panel (IP) / monitor\*
- B** Ventilator Unit (VU)\*
- C** IP stand
- D** Ventilator power cable\*\*
- E** VU-IP cable\*\*  
Length: 3 m (PN 160785) or 10 m (PN 160786)

\* Not included. Must be ordered separately with PN 160021.

\*\* Not included. Must be ordered separately.

**Note:** The ventilator power cable is country-specific. Order the power cable specific to the mains power outlet of your country.

### Safety information

#### ⚠ WARNING

The weight of the IP with shelf-mount and the VU with shelf-mount package is 20.5 kg (45.2 lb). Two persons are necessary to lift the IP and the VU or use an applicable lifting equipment.

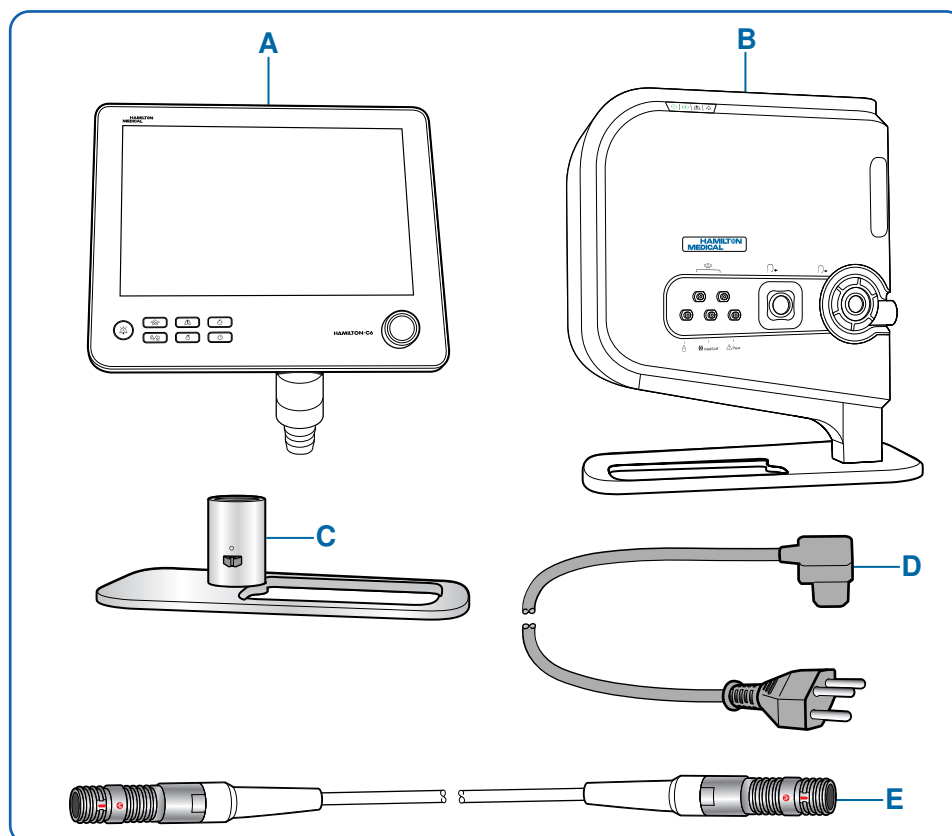
#### ⚠ CAUTION

- The weight of the IP with shelf-mount is 10 kg (22 lb) and the weight of the VU with shelf-mount is 10.5 kg (23.15 lb).
- Assemble the interaction panel and the ventilator unit on a shelf that can support the combined weight (20.5 kg (45.2 lb)).

### Tests and checks after installation

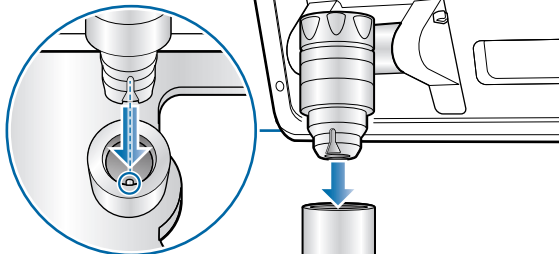
For details on the electrical safety tests and preoperational checks on the HAMILTON-C6 ventilator, see Chapter 1 – Ventilator Unit and Interaction Panel Overview.

Fill in the HAMILTON-C6 ventilator Testing and Acceptance Report after the initial installation. See Chapter 21.

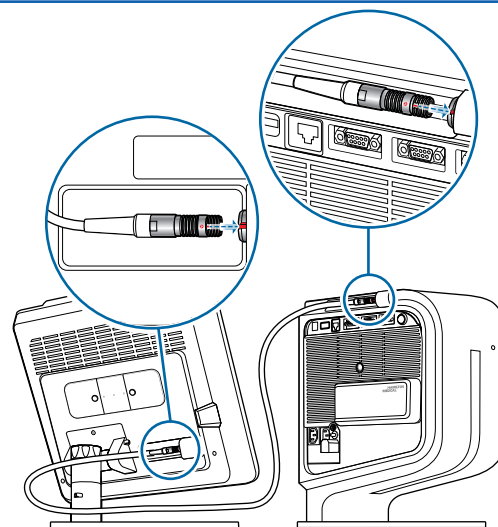


## How to assemble the IP, connect the VU-IP cable and the power cable

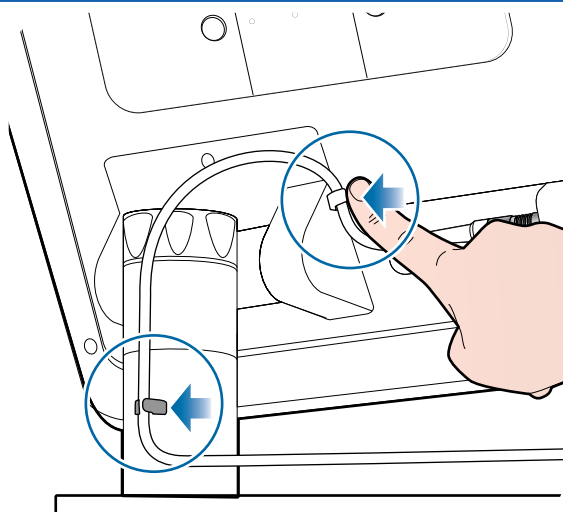
1



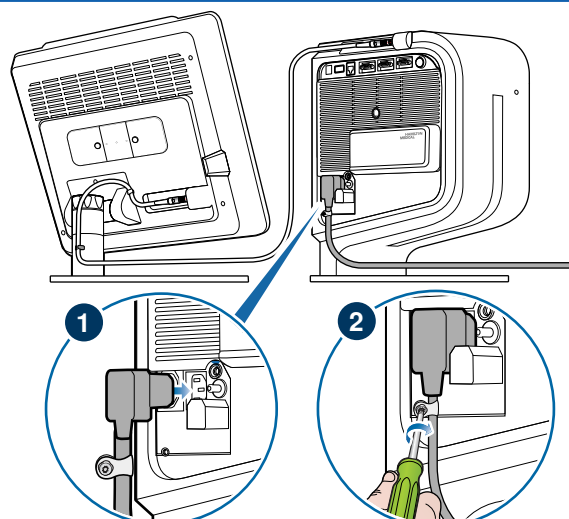
2



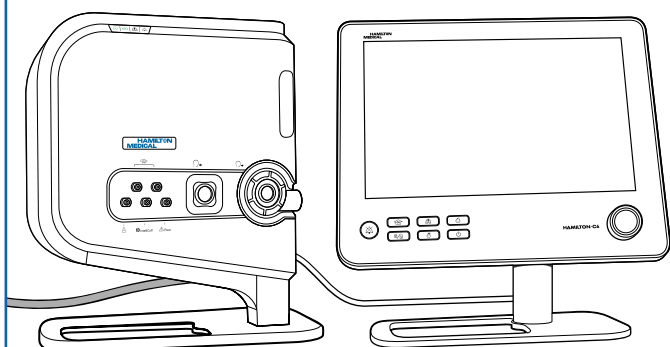
3



4



5





# HAMILTON-C6 Installation Guide

## Combined Shelf Mount Solution Assembly

English | 627075/04

 160060

### Required tools

- Slotted screwdriver (size: # 3 or # 4)
- Spanner/wrench: BS 13 mm or 1/2" AF
- Allen key (size: 5 mm and 6 mm)

### Components

- A** 1 x Interaction panel (IP) / monitor\*
- B** 1 x Ventilator Unit (VU)\*
- C** 1 x Hex socket cap screw, M8 x 55 mm
- D** 1 x Dock washer, 32 (OD) x 9 (ID) x 7 (H) mm
- E** 1 x IP mounting post
- F** 1 x VU column
- G** 4 x Countersunk hex socket screws for mounting VU, M8 x 20 mm
- H** 1 x Tubing support arm with quick-lock socket set (PN 160153)\*\*  
Contains:
  - H1** 1 x Tubing support arm with quick-lock socket
  - H2** 1 x Quick-lock socket
  - H3** 1 x M8 washer
  - H4** 1 x Hex bolt with reverse thread (fully threaded), M8 x 12 mm
- I** 1 x M14 washer
- J** 1 x Base plate
- K** 1 x Hex socket cap screws, M6 x 50 mm\*\*\*
- L** 2 x Hex socket cap screws, M6 x 14 mm\*\*\*
- M** 2 x Slot-nuts\*\*\*

\* Not included. Must be ordered separately with PN 160021.

\*\* Not included. Must be ordered separately.

\*\*\* Screws and slot-nuts for mounting the HAMILTON-C6 ventilator unit on the VU column.

**Note:** The ventilator power cable is country-specific. Order the power cable specific to the mains power outlet of your country.

A VU-IP cable (PN 952300 (0.65 m), or PN 160785 (3 m), or PN 160786 (10 m)) is required for the installation. The VU-IP cable must be ordered separately.

### Safety information

#### WARNING

The weight of the package for the multishelf mount is 33 kg (73 lb). Two persons are necessary to lift the IP and the VU package or use an applicable lifting equipment.

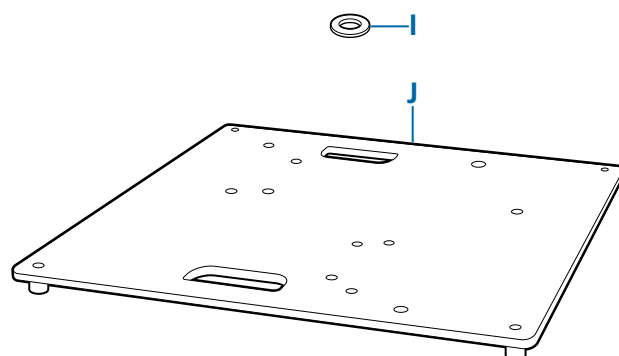
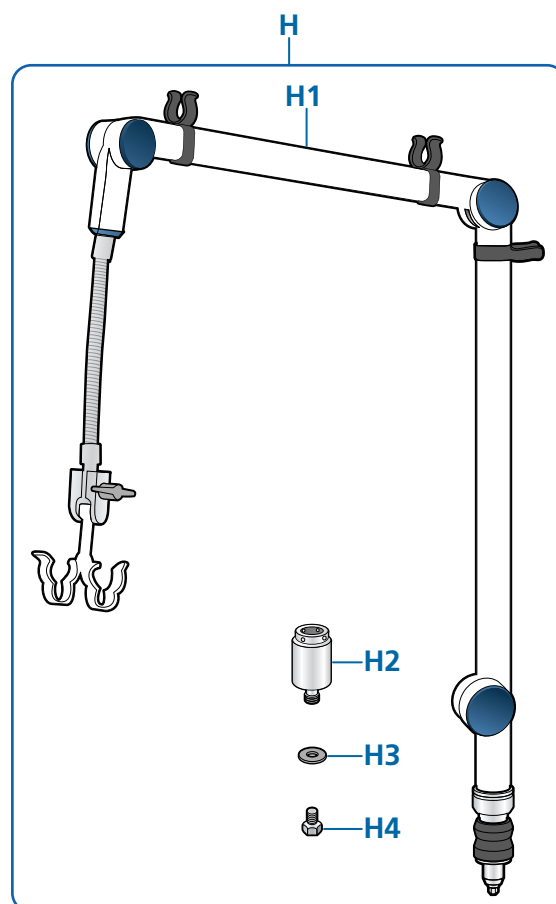
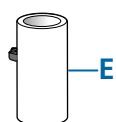
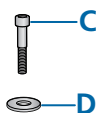
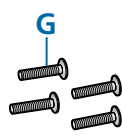
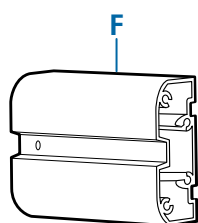
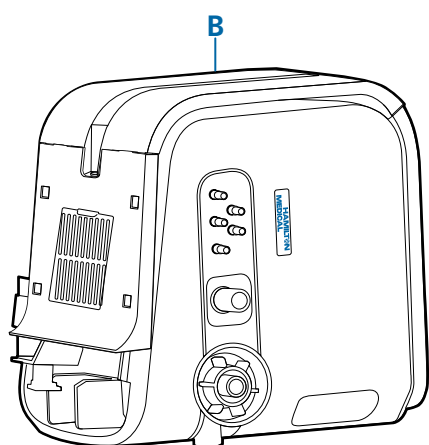
#### NOTICE

The base plate (Item E) has two different mounting positions to mount the ventilator unit and the tubing support arm with quick-lock socket. This provides flexibility to orientate the position of the combined shelf mount assembly.

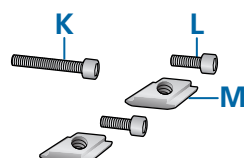
### Tests and checks after installation

For details on the electrical safety tests and preoperational checks on the HAMILTON-C6 ventilator, see Chapter 1 – *Ventilator Unit and Interaction Panel Overview*.

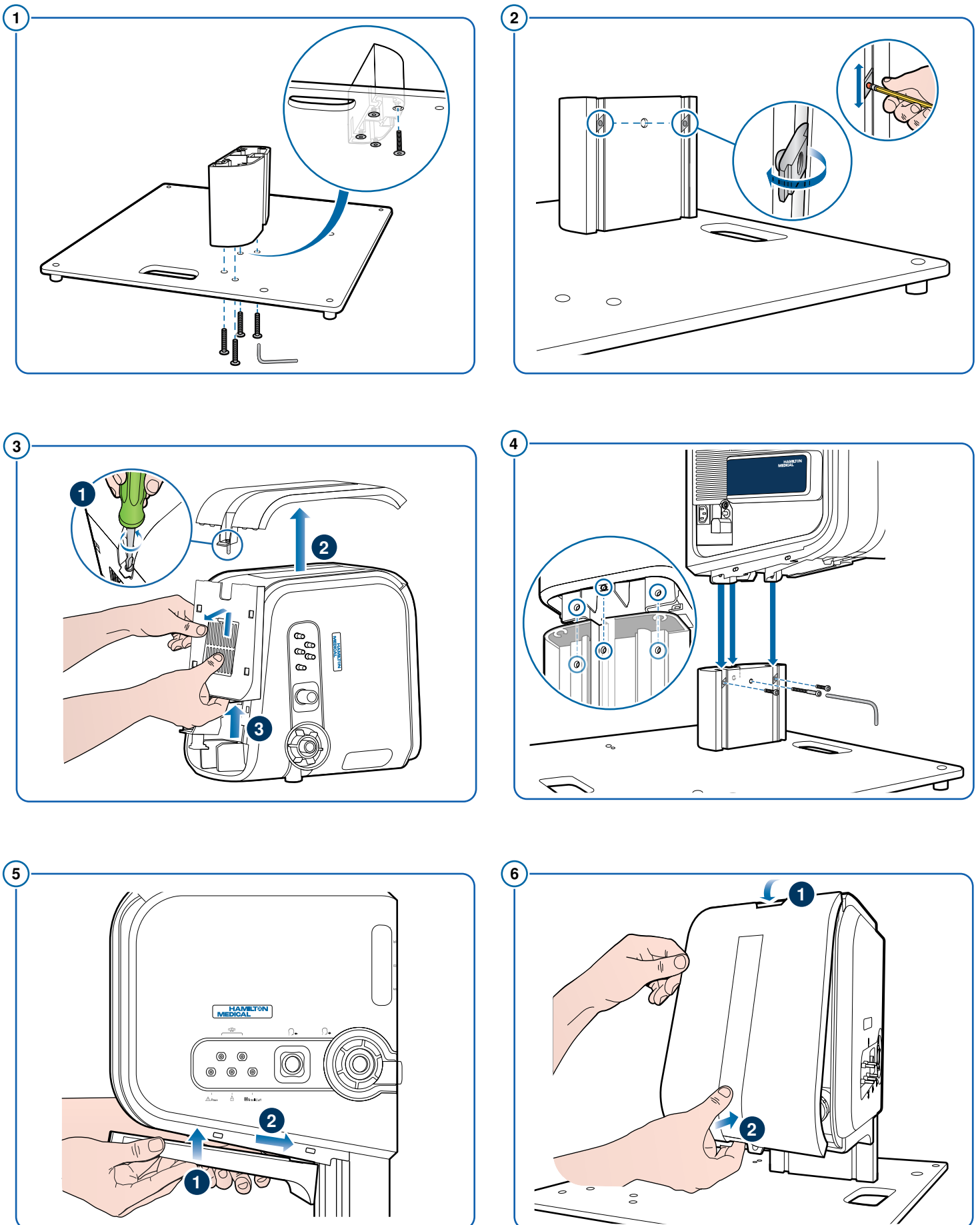
Fill in the HAMILTON-C6 ventilator *Testing and Acceptance Report* after the initial installation. See Chapter 21.

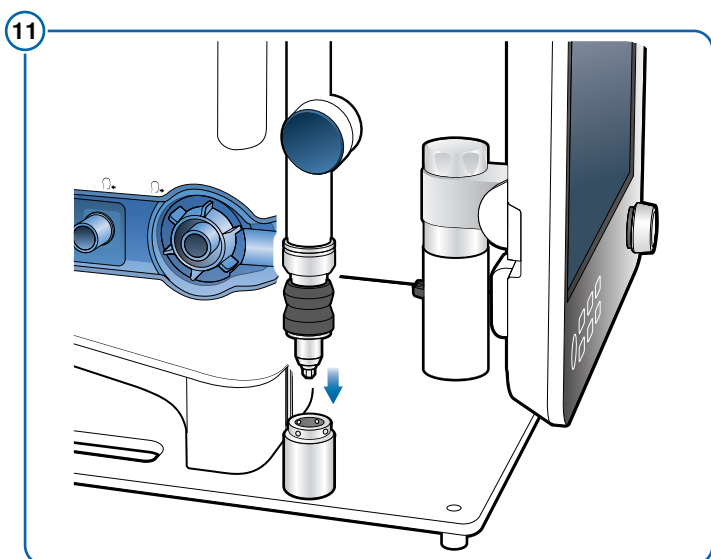
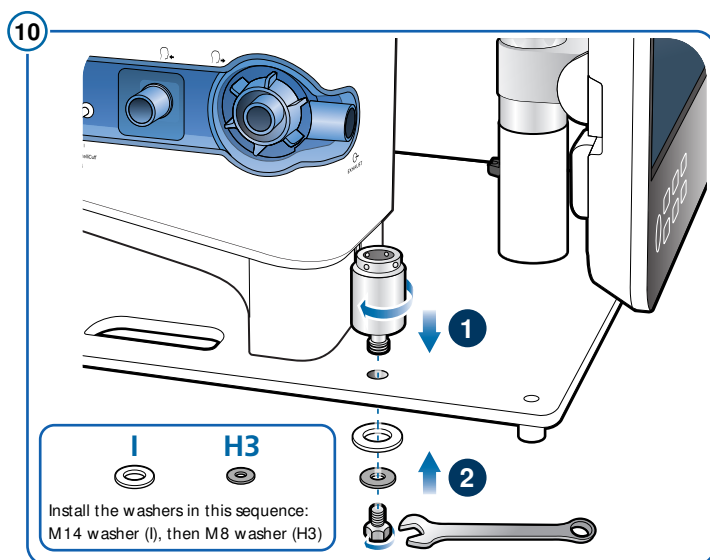
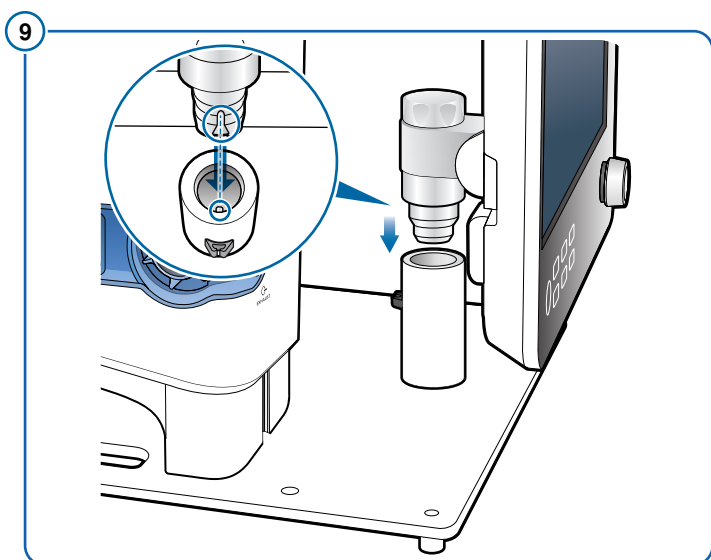
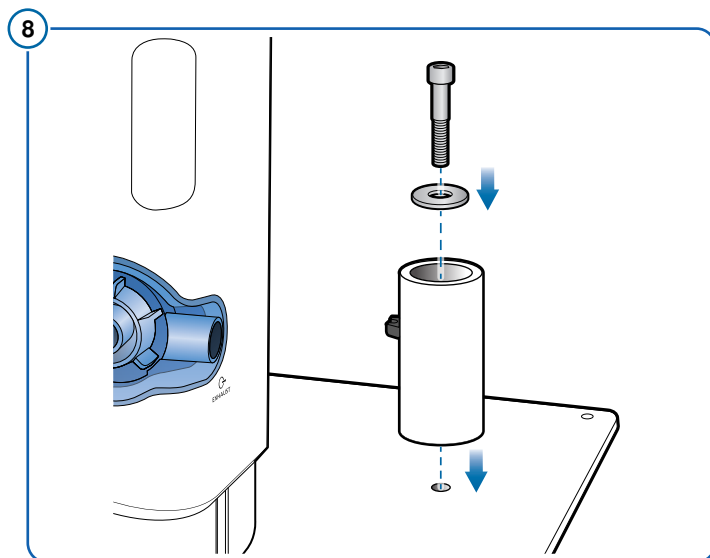
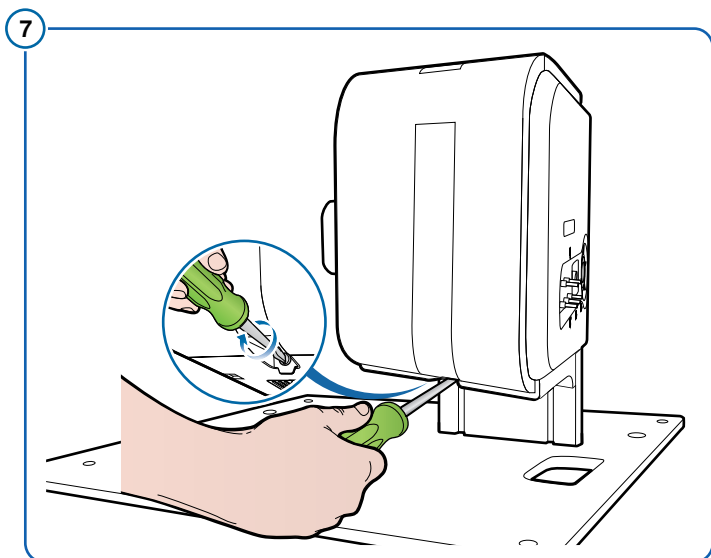


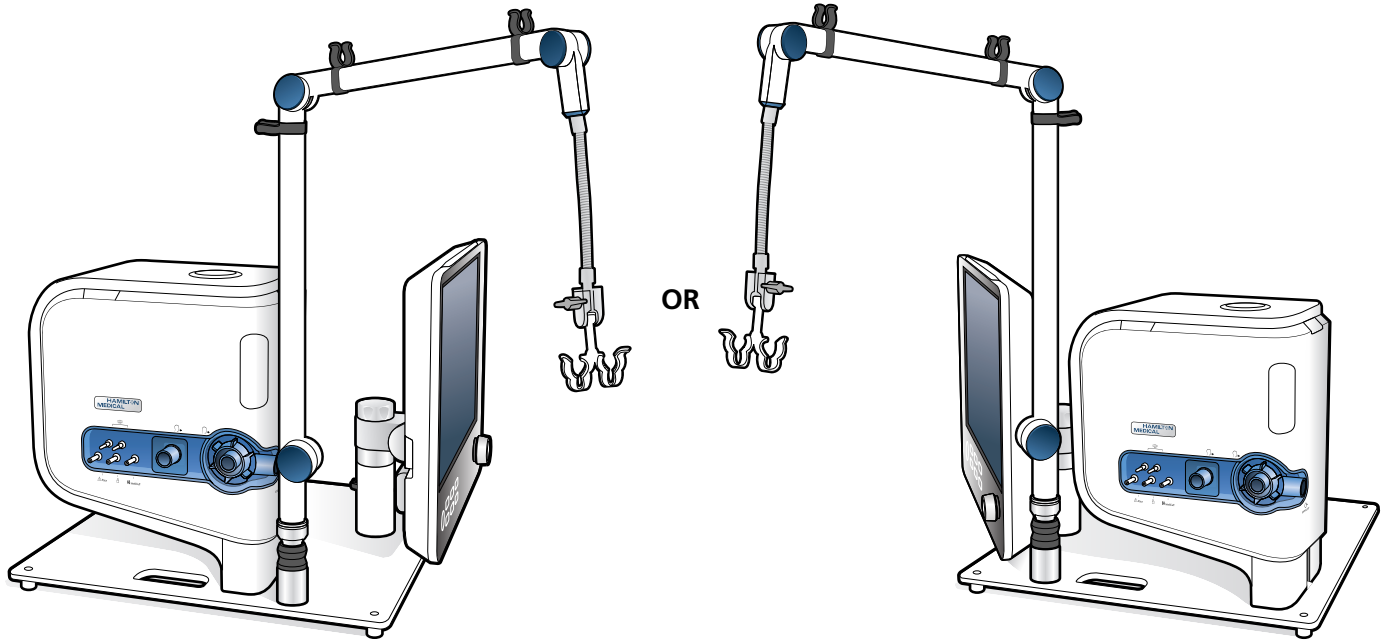
**Ventilator unit mounting kit:**



## How to assemble the VU, the IP, and the tubing support arm with quick-lock socket on the base plate







---

Blank Page

# HAMILTON-C6 Installation Guide

## Interaction Panel Mounting Options

English | 627075/04



160989, 160782, 160890, 10068879

### Required tools

Torx T15 screwdriver for VESA mount assembly

### Components

**A** Interaction panel mounting clamp options:

**A1** 1 x Handle mount clamp (PN 160782)\*

**A2** 1 x Pole mount clamp (PN 160989)\*\*

**A3** 1 x Rail mount clamp (PN 160890)\*\*

**B** 1 x VESA adapter plate (PN 10071828)

\* A HAMILTON-C6 Trolley Solution (PN 160029) is required for the installation. Not included.

\*\* A HAMILTON-C6 ventilator (PN 160021) is required for the installation. Not included.

**Note:** The interaction panel provides the interface for the VESA mount wall bracket assembly. VESA mount wall bracket is not included.

A 3-meter (PN 160785) or a 10-meter (PN 160786) VU-IP cable is required for the pole mount, the rail mount, and the VESA mount. The VU-IP cable is not included.

Clamp A1 must be ordered separately.

Clamp A2 is included in the Pole Mount solution (PN 160031).

Clamp A3 is included in the Rail Mount solution (PN 160032).

### Safety information

#### ⚠ WARNING

Turn off the VU and disconnect the power cable from the mains power supply before you start the installation. This will prevent possible electric shock or damage to the IP or the VU.

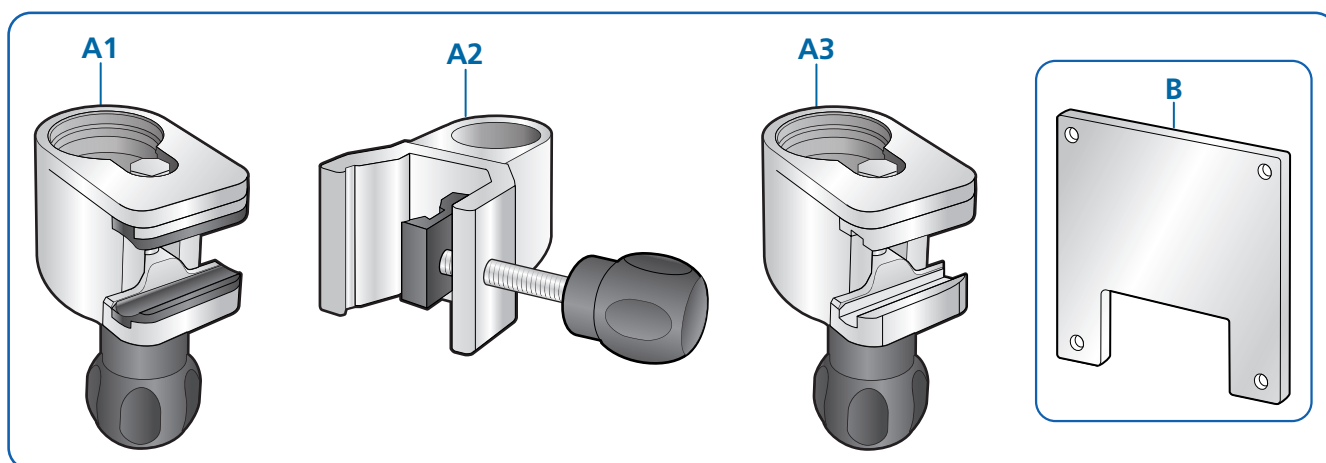
#### ⚠ CAUTION

Disconnect the VU-IP cable from the rear of the IP and the rear of the VU before you start the installation if connected.

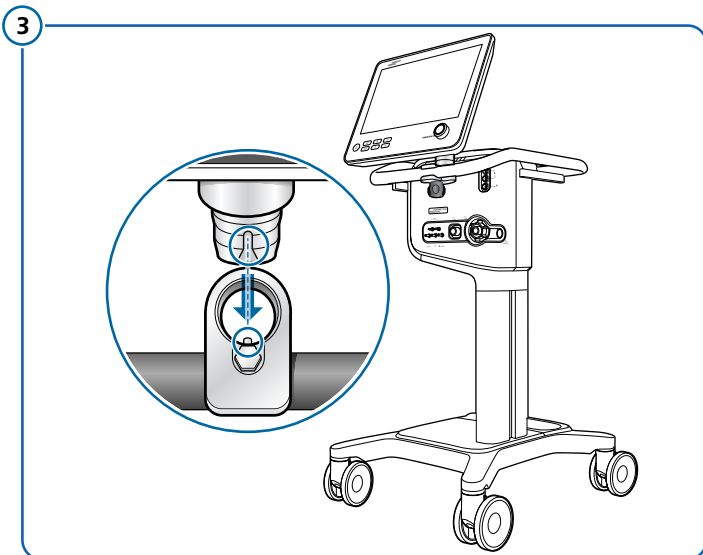
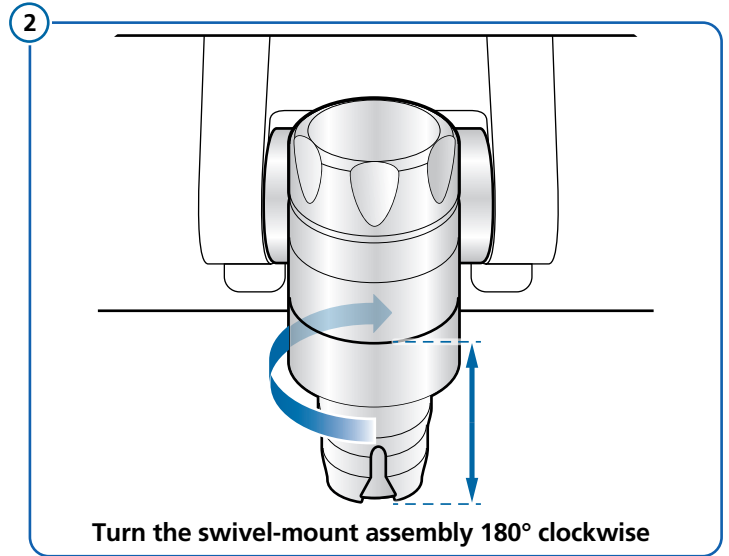
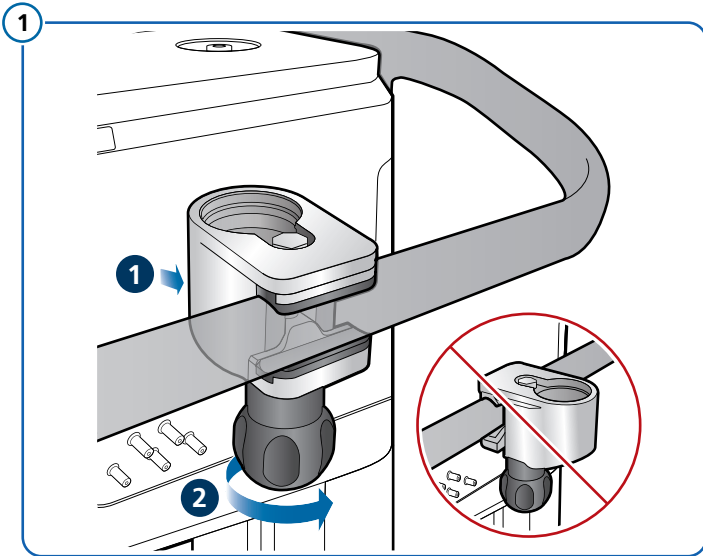
### Tests and checks after installation

For details on the electrical safety tests and preoperational checks on the HAMILTON-C6 ventilator, see Chapter 1 – Ventilator Unit and Interaction Panel Overview.

Fill in the HAMILTON-C6 ventilator *Testing and Acceptance Report* after the initial installation. See Chapter 21.

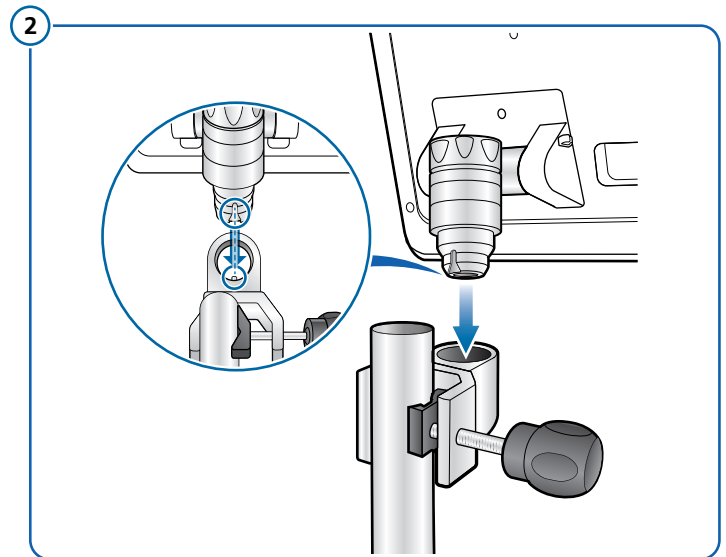
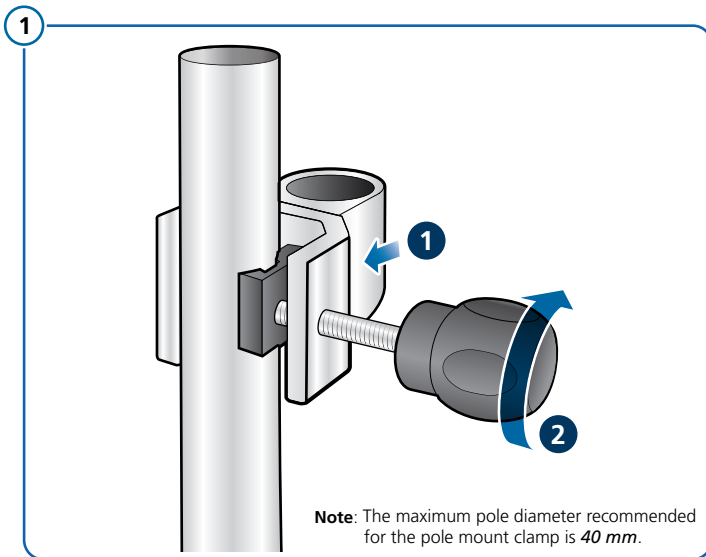


## How to mount the IP on the VU handle





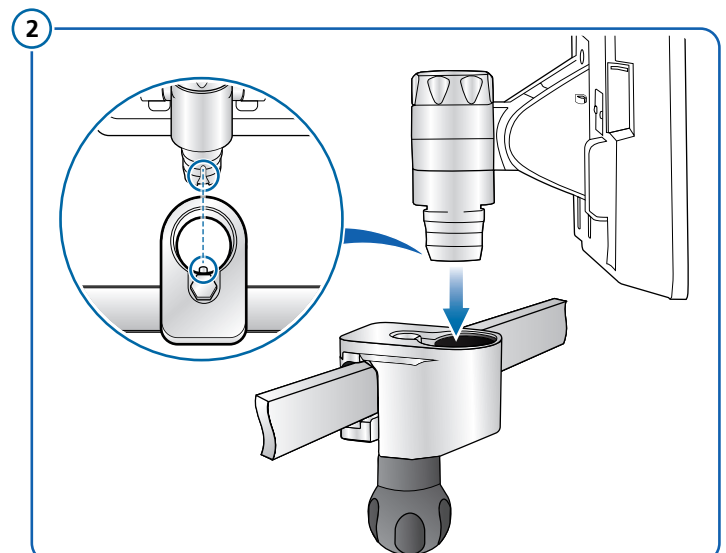
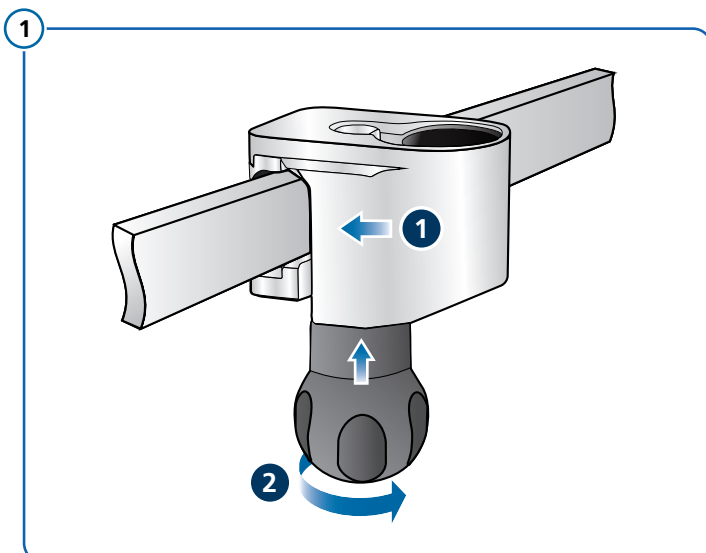
## How to mount the IP to a pole



## How to mount the IP to a standard rail

### CAUTION

*Do not mount the Rail Mount Clamp (Item A3, PN 160890) on the standard rail on the side of the HAMILTON-C6 VU handle. The Rail Mount Clamp is only intended for external standard rail mount.*



## How to mount the VESA mount bracket on the rear of the IP

### CAUTION

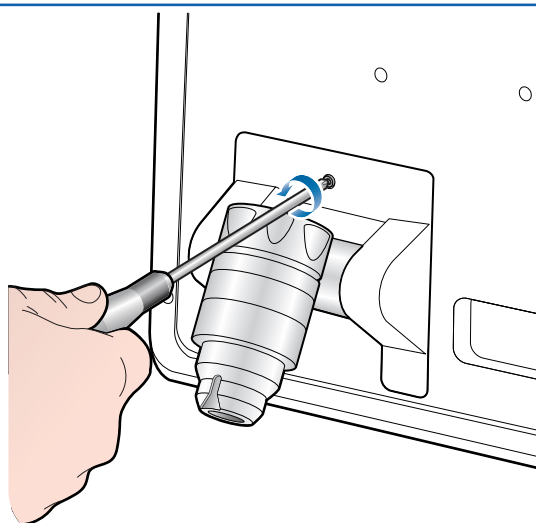
The maximum length of the recommended screws for mounting the VESA mount bracket on the rear of the IP must not be more than 20 mm.

### NOTICE

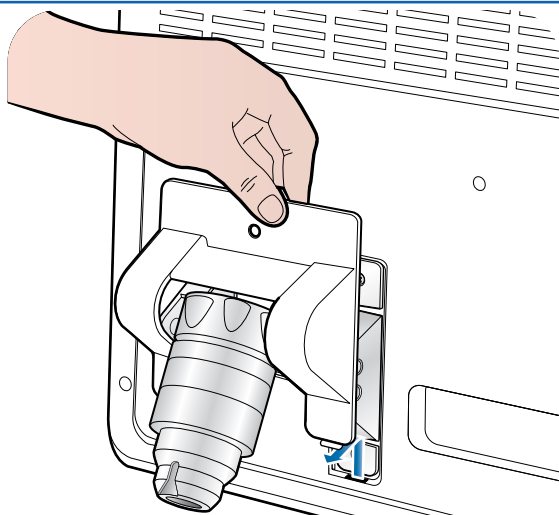
#### VESA mount specification:

- VESA mount bracket thickness: maximum of 2 mm
- VESA mount bracket screw holes dimensions: 100 mm (L) x 100 mm (H)
- Recommended screws: 4 x Hex socket head cap screws, thus M4 x 15 mm + [thickness (x mm)] of the VESA mount bracket

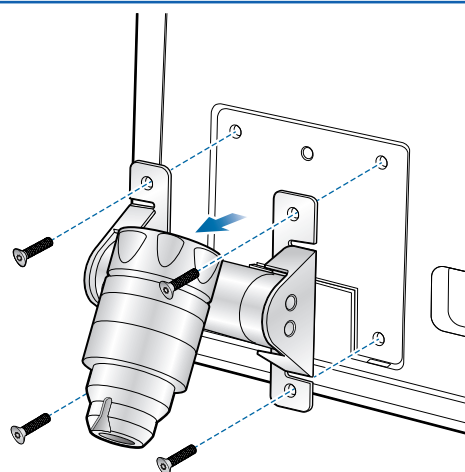
1



2

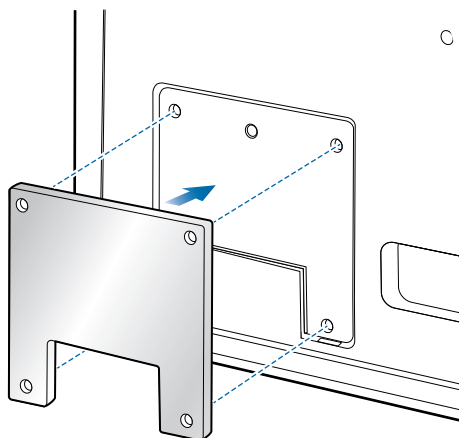


3



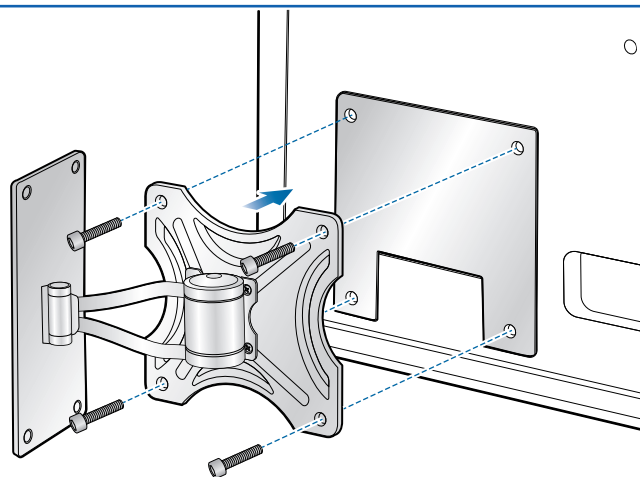
Remove the swivel-mount assembly

4



Install the VESA adapter plate

5



Install the VESA mount bracket



160785, 160786

### Required tools

Slotted screwdriver (size: # 2)

Torx T15 screwdriver

### Components

- A** 1 x Ventilator Unit-Interaction Panel (VU-IP) cable  
Available lengths: 3 m (PN 160785) or 10 m (PN 160786)
- B** 1 x Cablewrap (PN 160936)
- C** 2 x Blanking covers
- D** 2 x Torx screws, M4 x 6 mm

**Note:** A HAMILTON-C6 ventilator (PN 160021) is required for the installation. Not included.

### Safety information

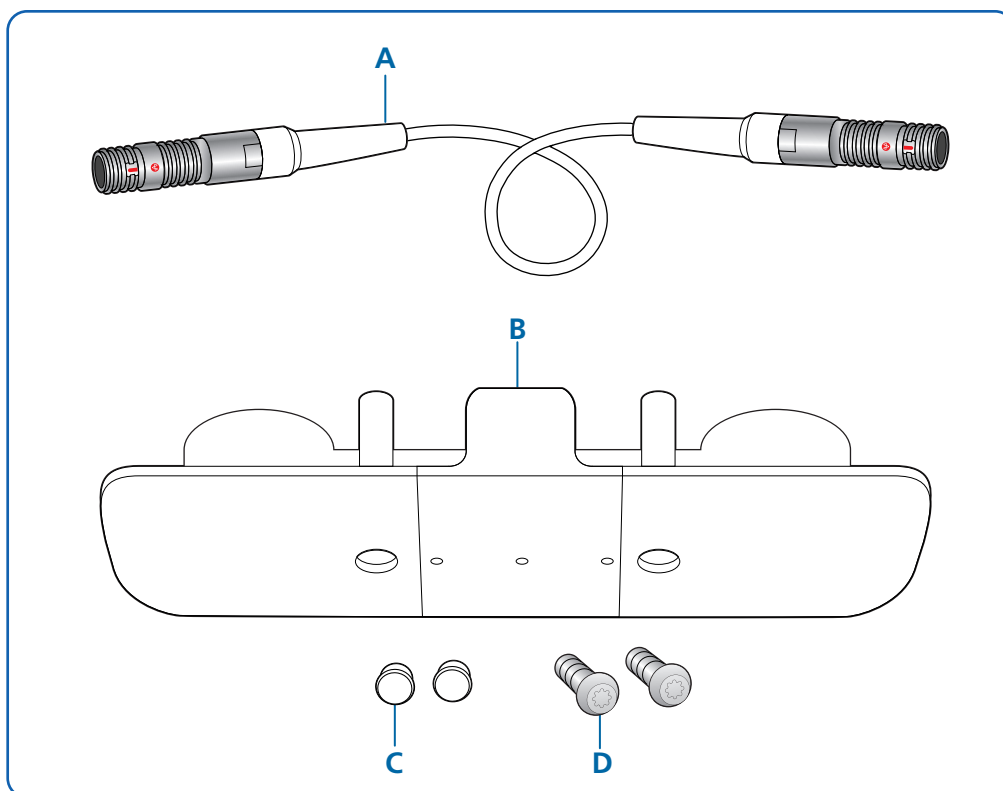
#### ⚠ WARNING

Turn off the VU and disconnect the power cable from the mains power supply before you start the installation. This will prevent possible electric shock or damage to the IP or the VU.

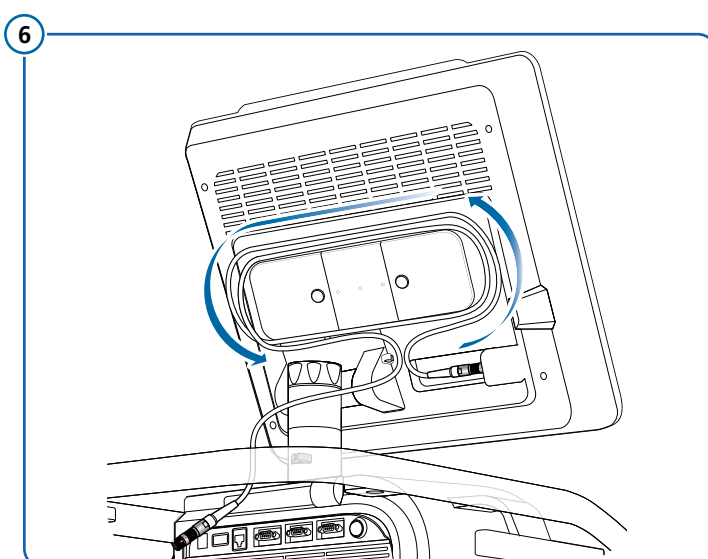
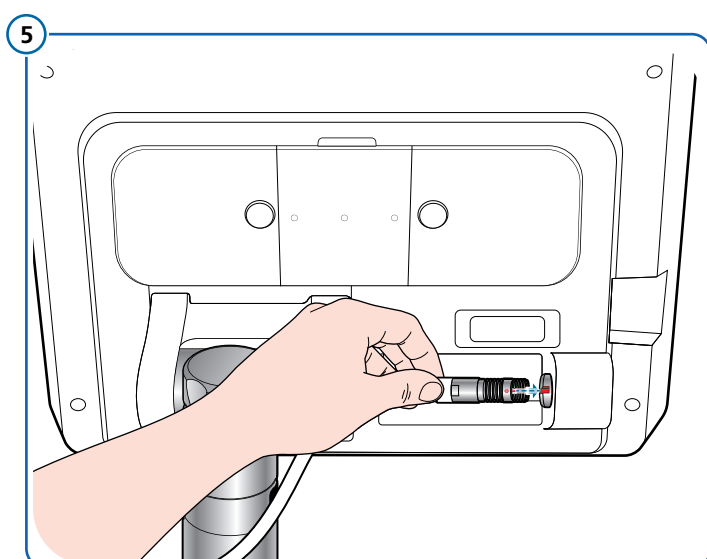
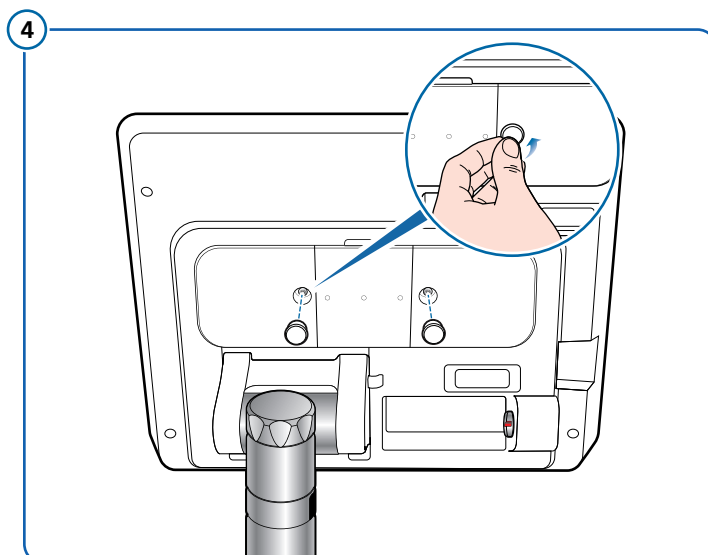
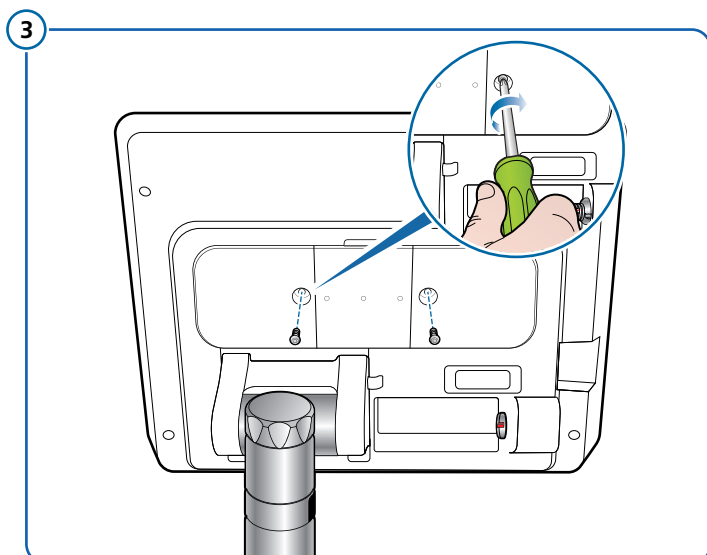
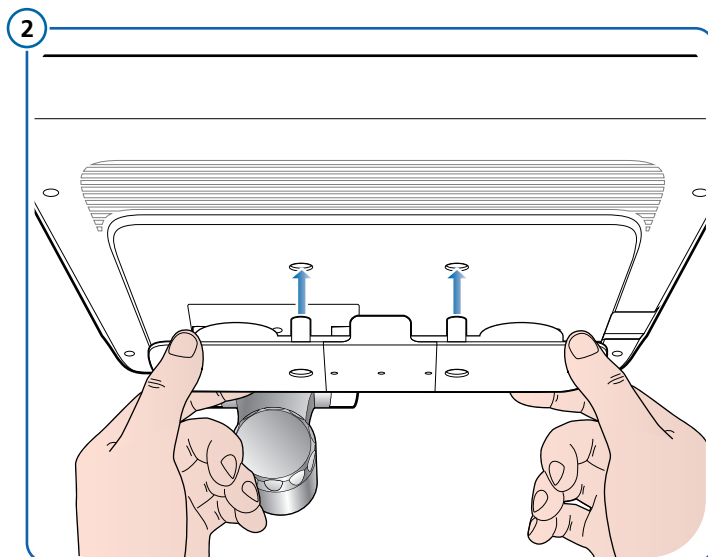
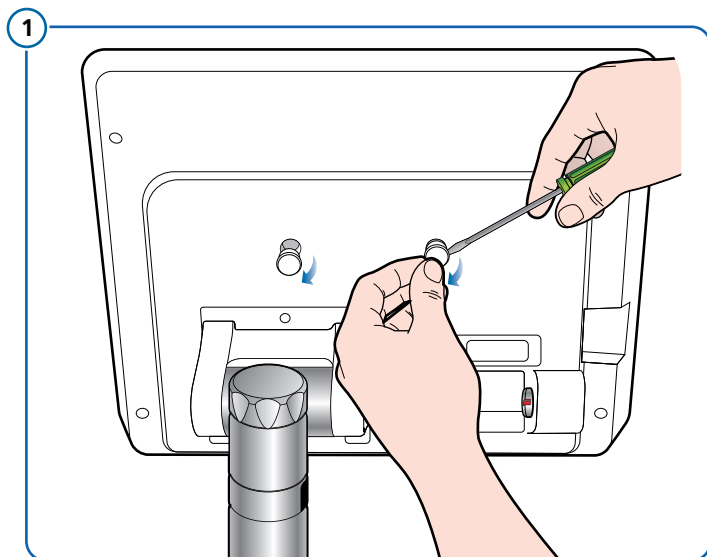
### Tests and checks after installation

For details on the electrical safety tests and preoperational checks on the HAMILTON-C6 ventilator, see Chapter 1 – *Ventilator Unit and Interaction Panel Overview*.

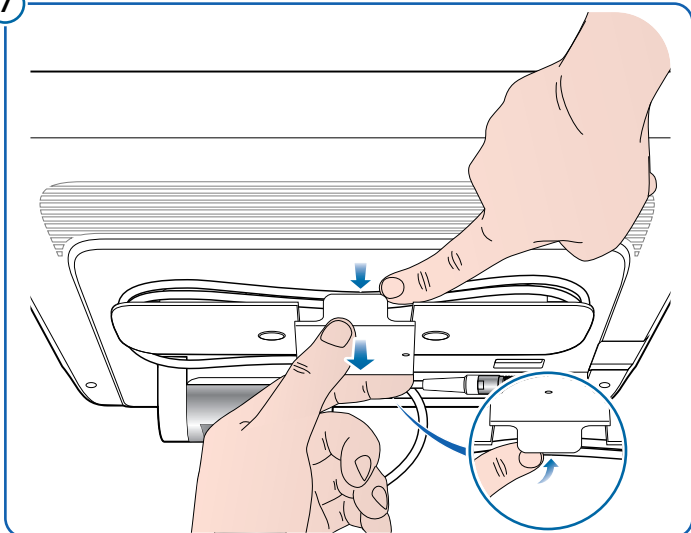
Fill in the HAMILTON-C6 ventilator *Testing and Acceptance Report* after the initial installation. See Chapter 21.



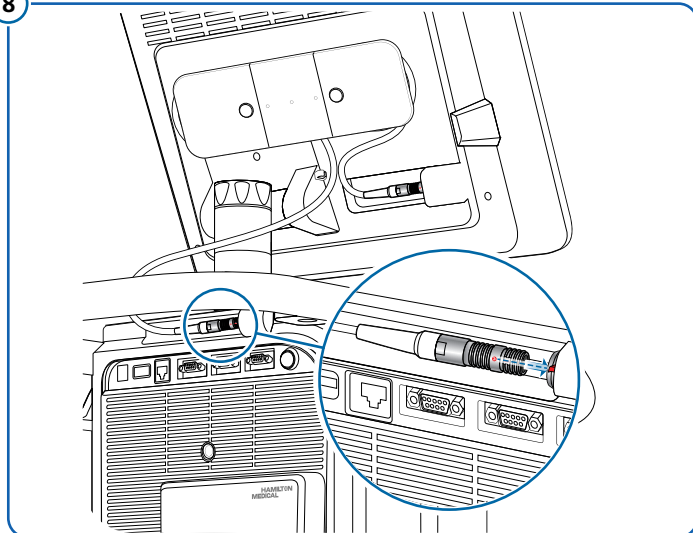
## How to assemble the cablewrap



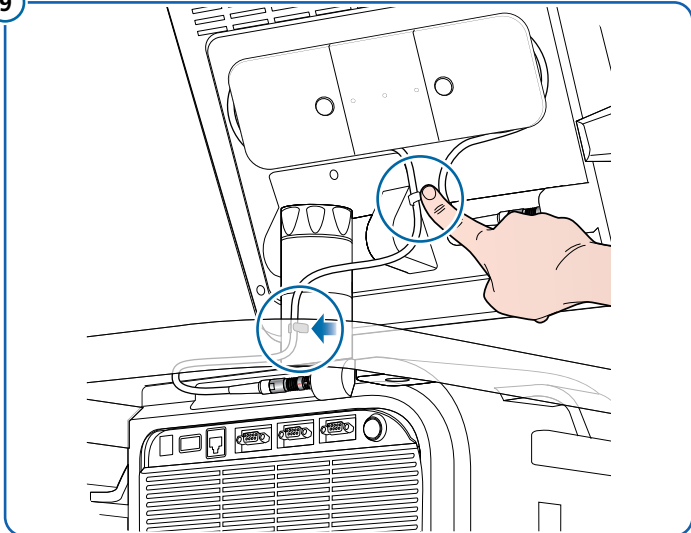
7



8



9



---

Blank Page

# HAMILTON-C6 Installation Guide

## Communication Board Assembly

English | 627075/04

**REF** 160184, 160185

### Required tools

Slotted screwdriver (size: # 1)  
Torx T10 screwdriver

### Components

**A** Communication board:

**A1** 1 x CO2, SpO2, and Aerogen® (PN 160184)

or

**A2** 1 x CO2 and SpO2 (PN 160185)

**B** 2 x Torx screws, M3 x 8 mm

**Note:** A HAMILTON-C6 ventilator (PN 160021) is required for the installation. Not included.

### Safety information

#### ⚠ WARNING

Turn off the VU and disconnect the power cable from the mains power supply before you start the installation. This will prevent possible electric shock or damage to the VU or the communication board.

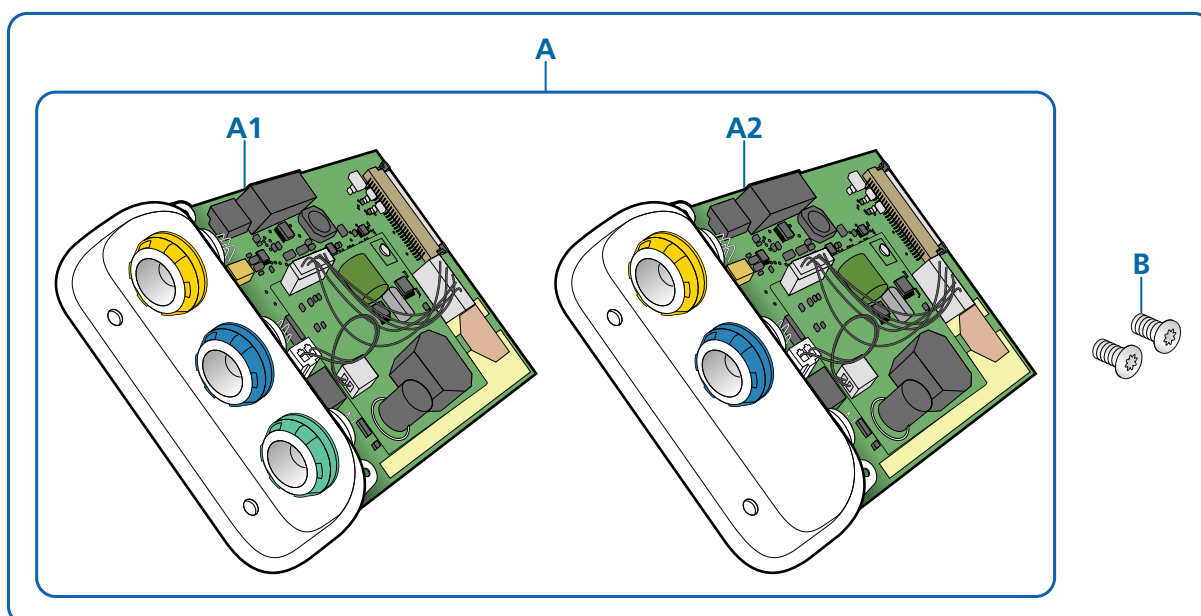
#### ⚠ CAUTION

Use an applicable electrostatic discharge (ESD) device such as ESD wrist strap to equalize your body's charge with the ventilator unit's charge before you start the installation. This will help protect the electronic components of the ventilator unit and the communication board from ESD damage.

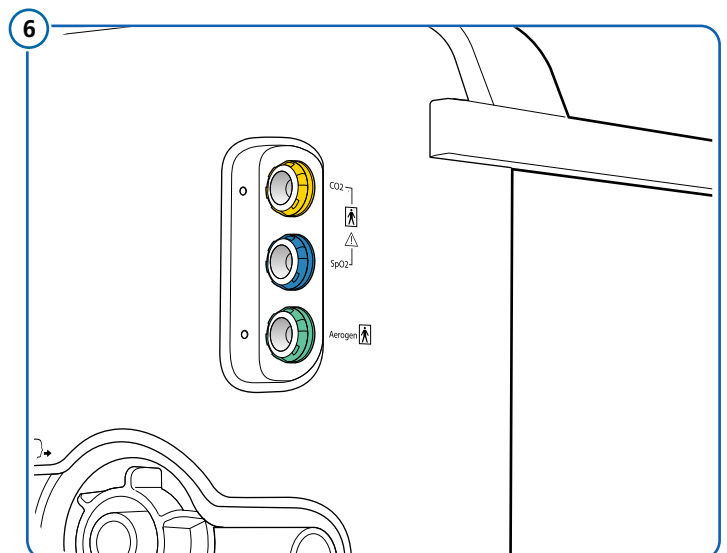
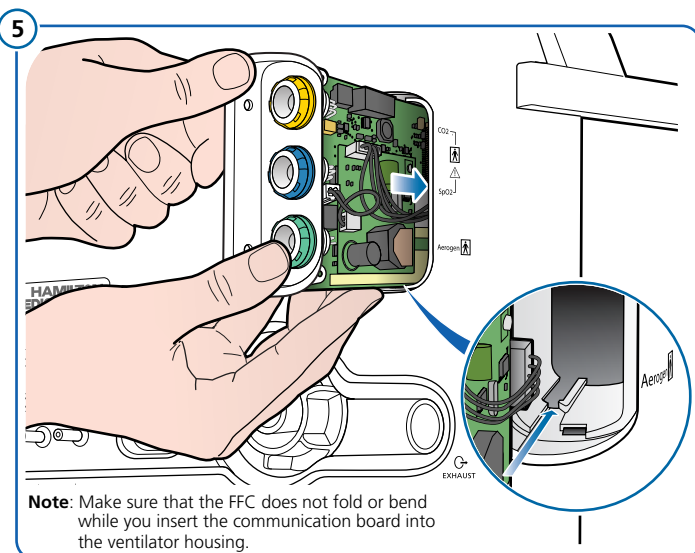
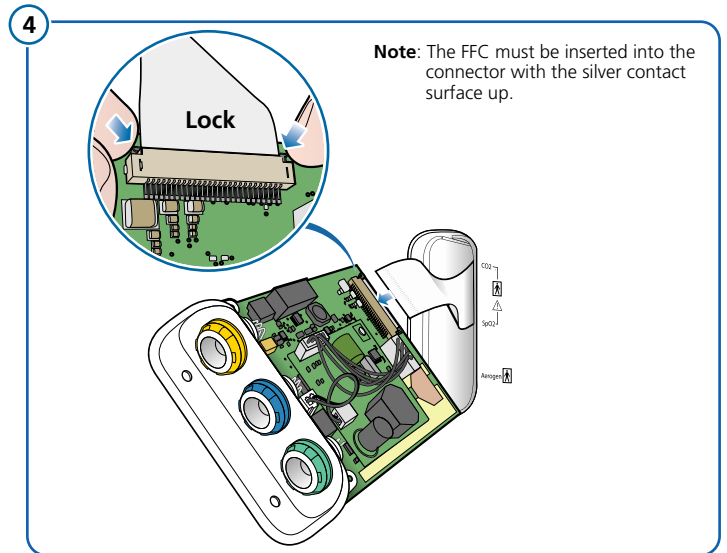
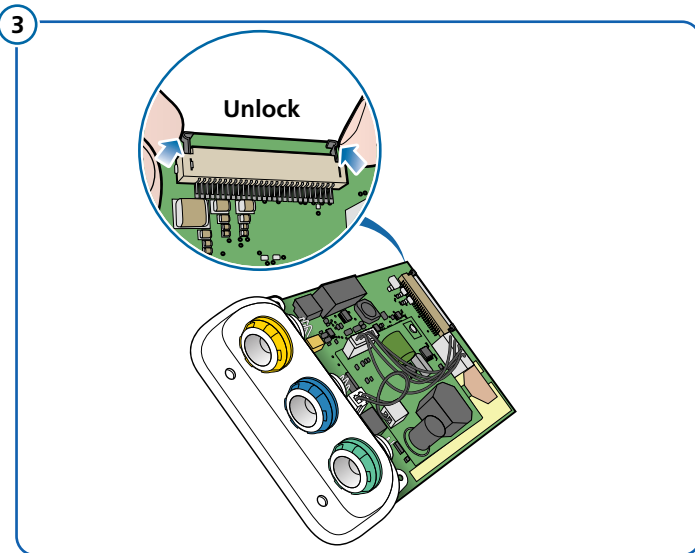
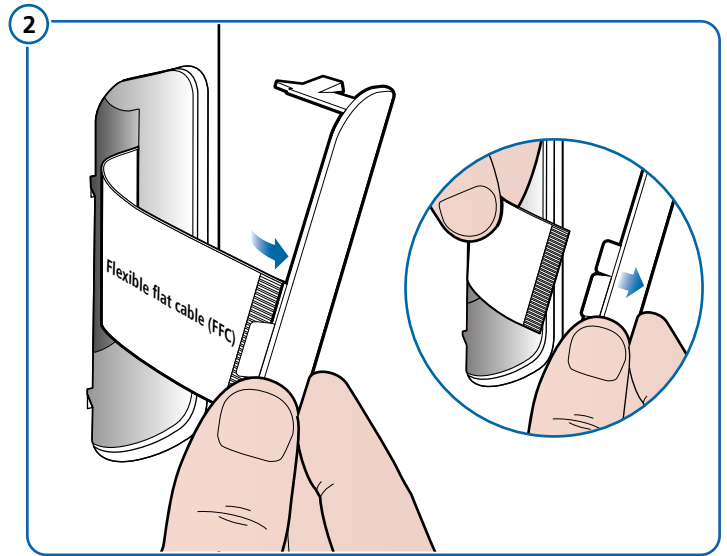
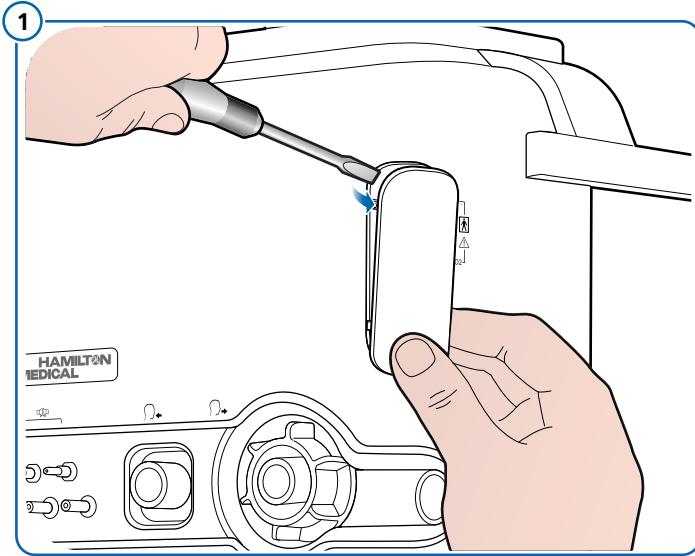
### Tests and checks after installation

For details on the electrical safety tests and preoperational checks on the HAMILTON-C6 ventilator, see Chapter 1 – Ventilator Unit and Interaction Panel Overview.

Fill in the HAMILTON-C6 ventilator *Testing and Acceptance Report* after the initial installation. See Chapter 21.

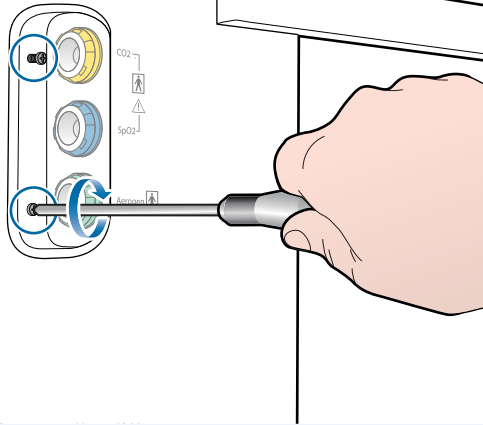


## How to assemble the communication board





7



---

Blank Page

**REF** 160784

### Required tools

Slotted screwdriver (size: # 3 or # 4)

### Components

- A** 1 x IntelliCuff pressure controller (PN 951001)
- B** 1 x Cuff tubing
- C** 1 x USB communication cable
- D** 1 x IntelliCuff retaining plate (PN 160834)

**Note:** A HAMILTON-C6 ventilator (PN 160021) is required for the installation. Not included.

### Safety information

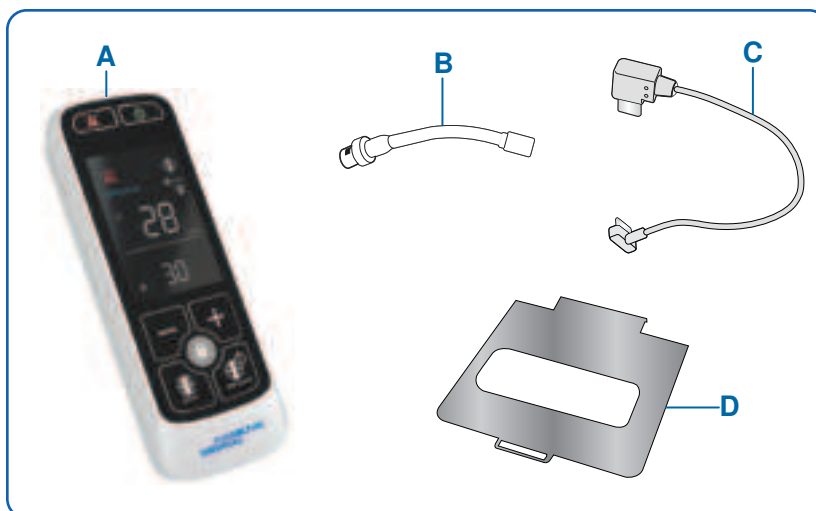
#### ⚠ CAUTION

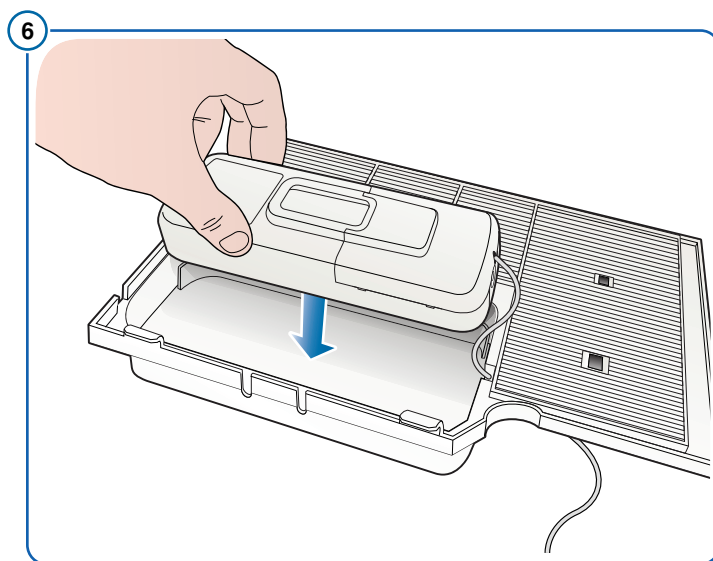
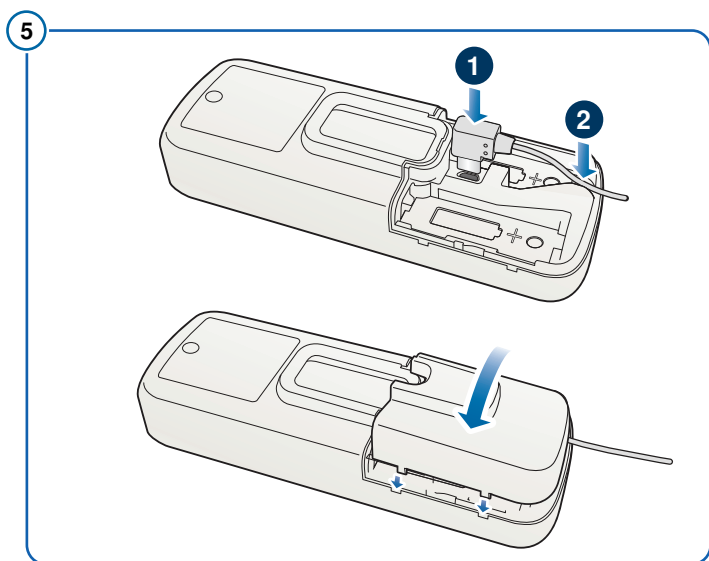
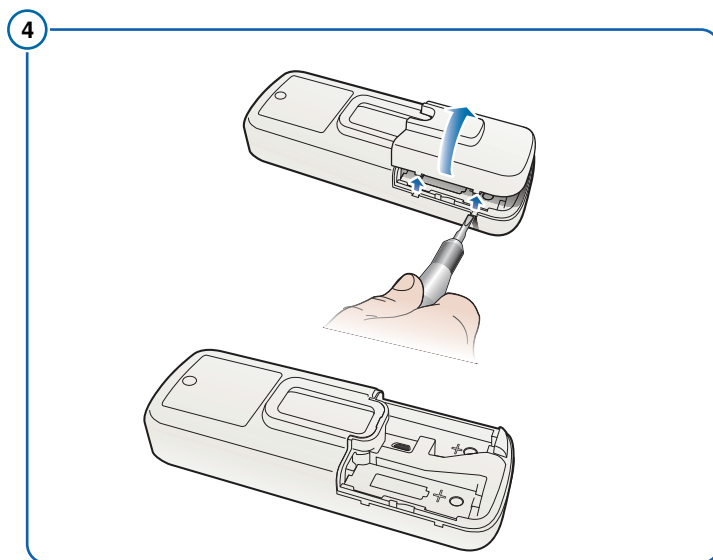
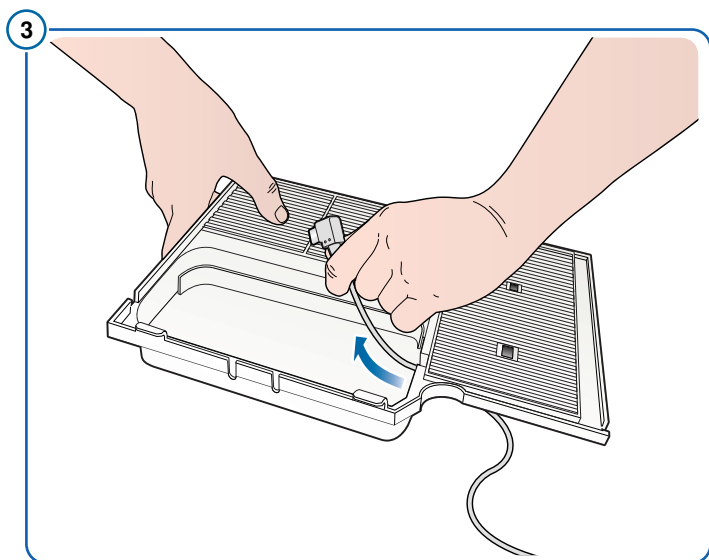
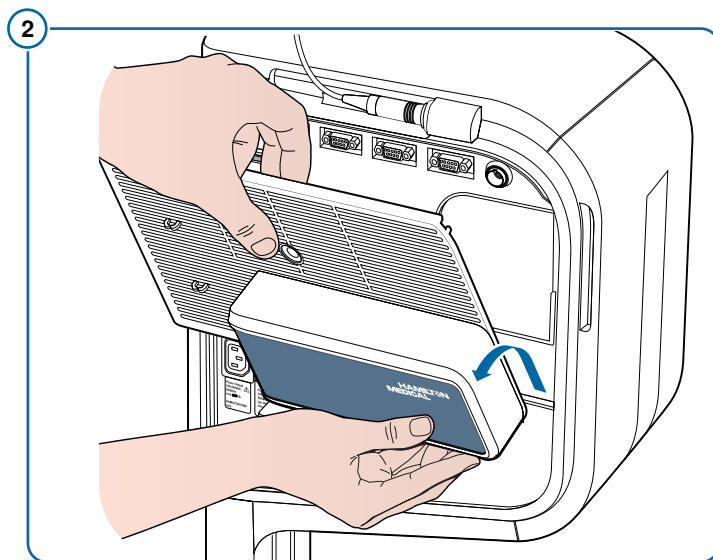
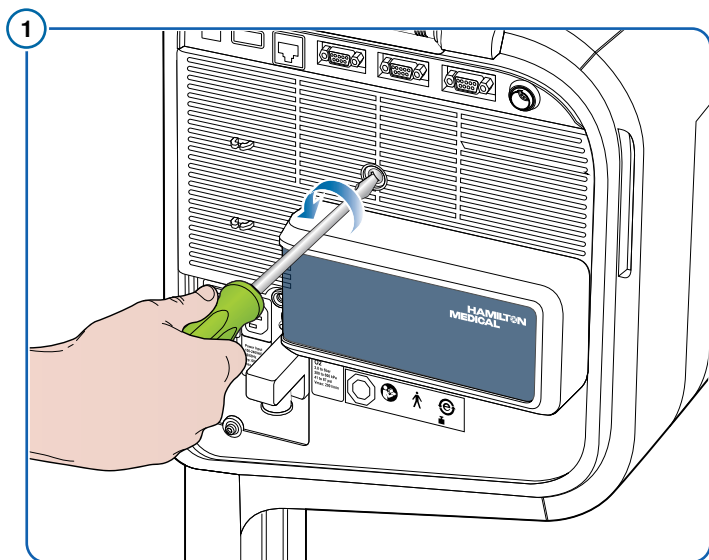
*Do not put batteries in the IntelliCuff battery compartment as the USB communication cable provides electrical power to the IntelliCuff through the VU.*

### Tests and checks after installation

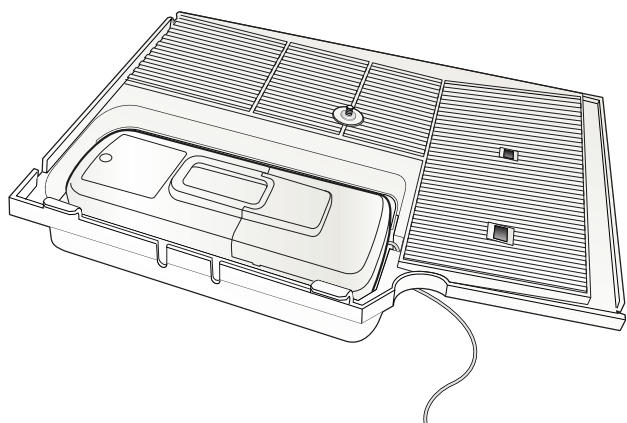
For details on the electrical safety tests and preoperational checks on the HAMILTON-C6 ventilator, see Chapter 1 – *Ventilator Unit and Interaction Panel Overview*.

Fill in the HAMILTON-C6 ventilator *Testing and Acceptance Report* after the initial installation. See Chapter 21.

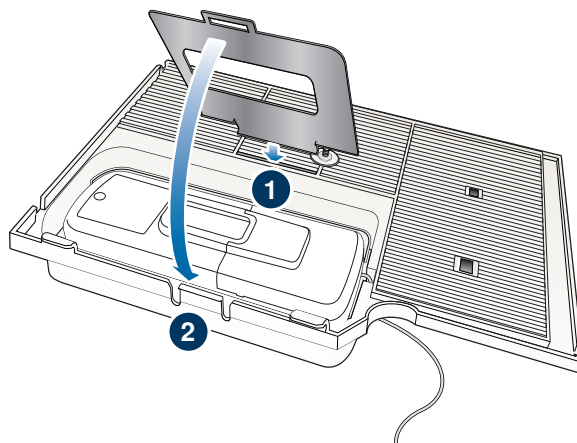




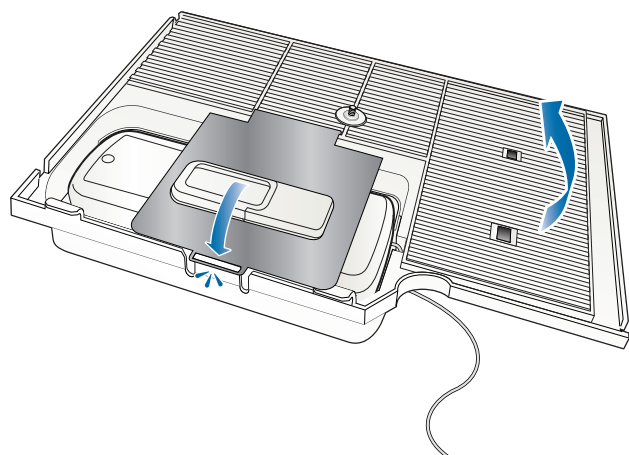
7



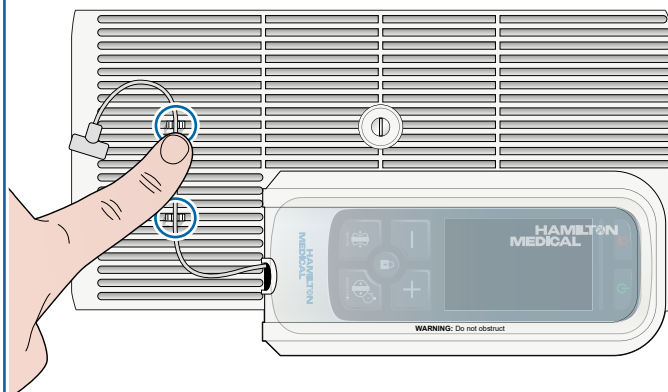
8



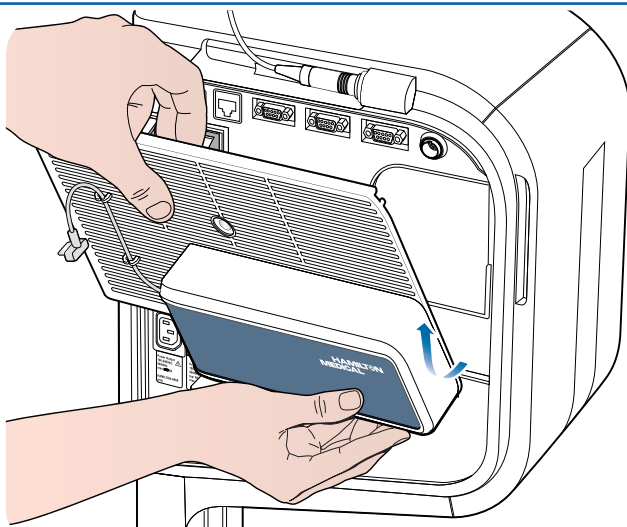
9



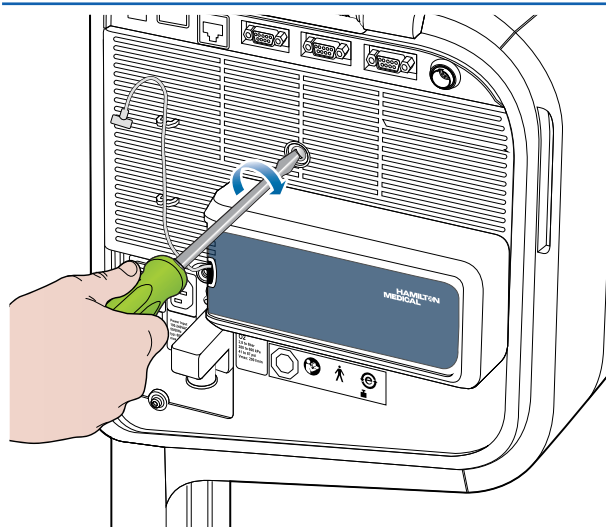
10



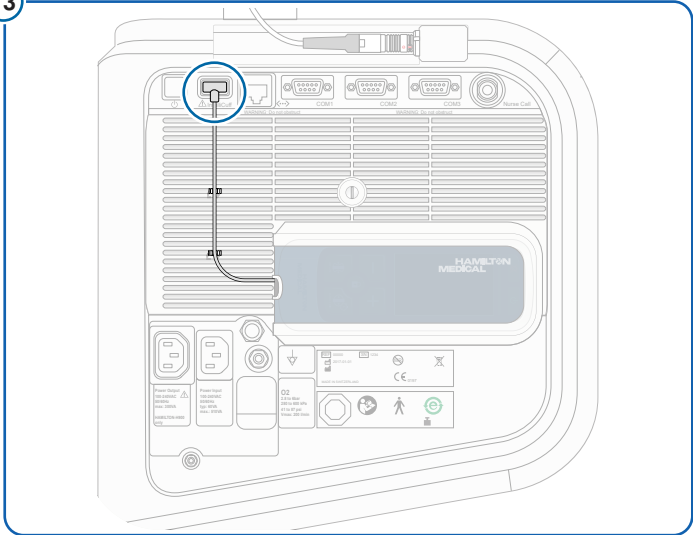
11



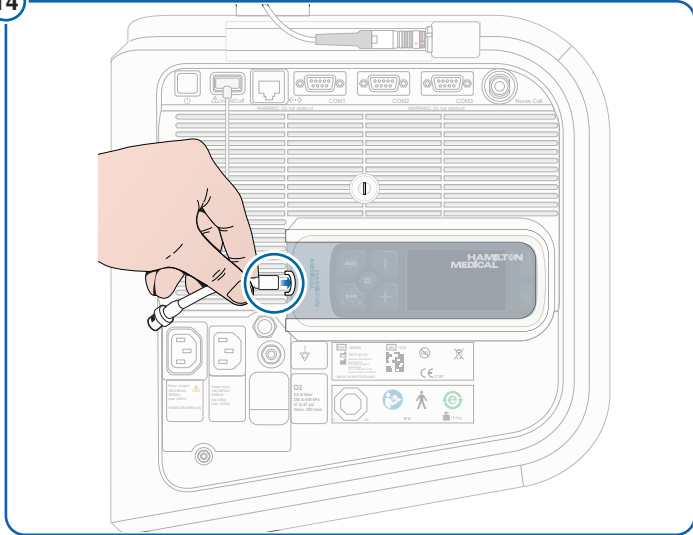
12



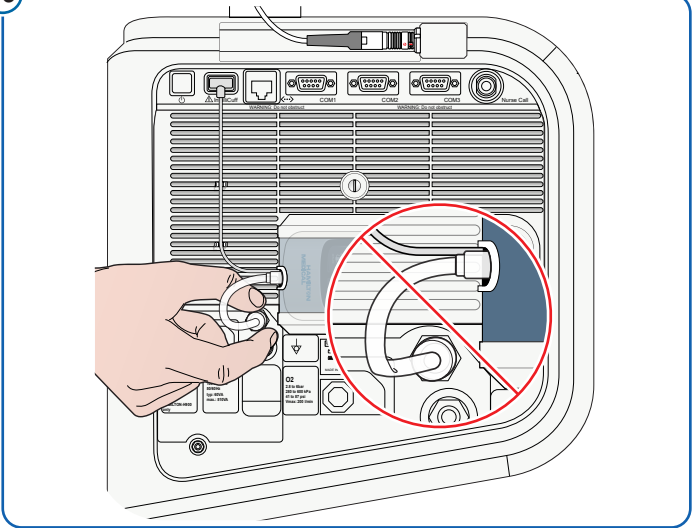
13



14



15



# HAMILTON-C6 Installation Guide

## Paramagnetic O2 sensor Assembly

English | 627075/04

REF 160169

### Required tools

- Slotted screwdriver (size: # 3 or # 4)
- Torx T6 screwdriver

### Components

- A** 1 x Paramagnetic O2 sensor (PN 160169)
- B** 1 x O-ring
- C** 1 x Paramagnetic O2 sensor mounting adapter
- D** 4 x Countersunk head Torx screws, M2 x 5 mm (PN PN 420658)\*
- E** 4 x Lens head Torx screws, M2 x 5 mm (PN 420393)\*\*
- F** 4 x Delta PT® button head Torx screws, M2.2 x 8 mm (PN 420902 )\*\*\*

\* Screws for mounting adapter to paramagnetic O2 sensor.

\*\* Screws for mounting the paramagnetic O2 sensor to mounting plate with metal threaded screw holes.

\*\*\* Screws for mounting the paramagnetic O2 sensor to mounting plate with threaded screw holes in the plastic.

**Note:** A HAMILTONC-6 ventilator (PN 160021) is required for the installation. Not included.

### Safety information

#### ⚠ WARNING

Turn off the VU and disconnect the power cable from the mains power supply before you start the installation. This will prevent possible electric shock or damage to the VU or the O2 sensor.

#### ⚠ CAUTION

Identify the thread type of the mounting plate, then use the specified screws for the applicable thread, to mount the paramagnetic O2 sensor to the mounting plate. If you use the incorrect screws to mount the paramagnetic O2 sensor, this can cause damage to the mounting plate.

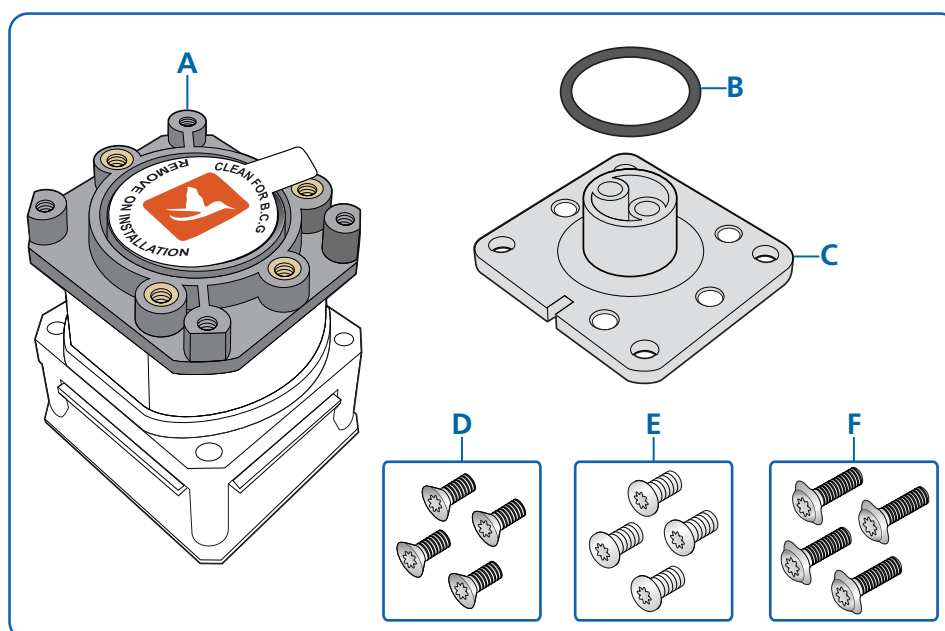
#### NOTICE

- The cable for the paramagnetic O2 sensor connector is preinstalled and stowed above the sensor compartment.
- Stow the connector cable for the galvanic O2 sensor above the sensor compartment after the removal of the galvanic O2 sensor.

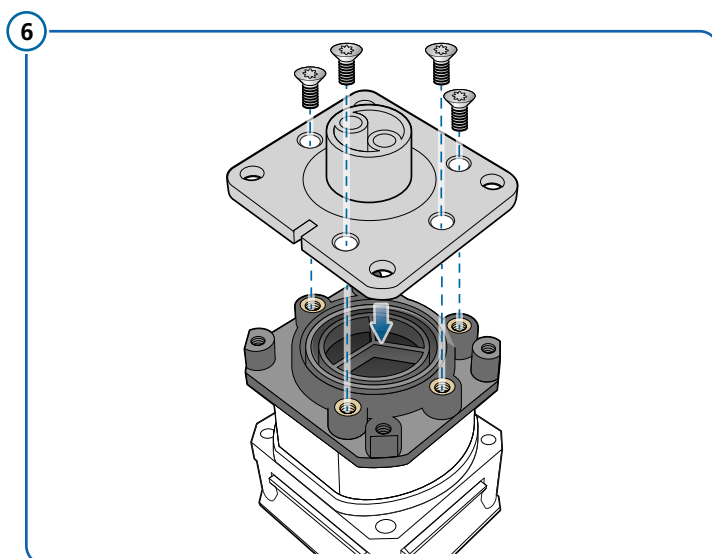
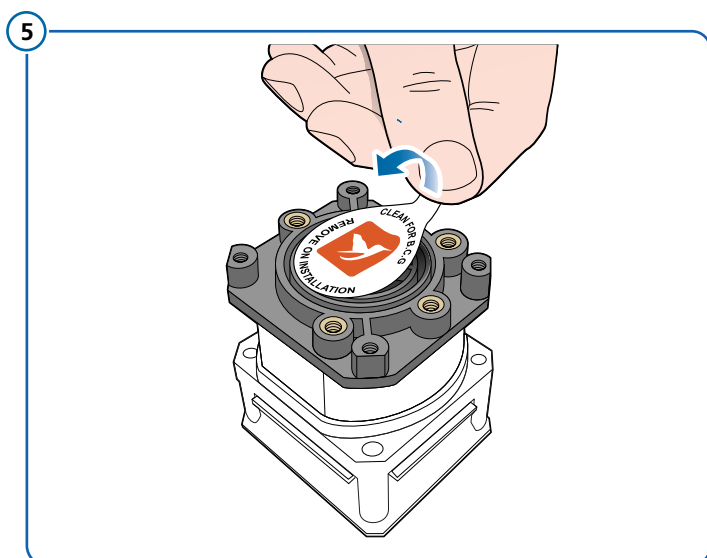
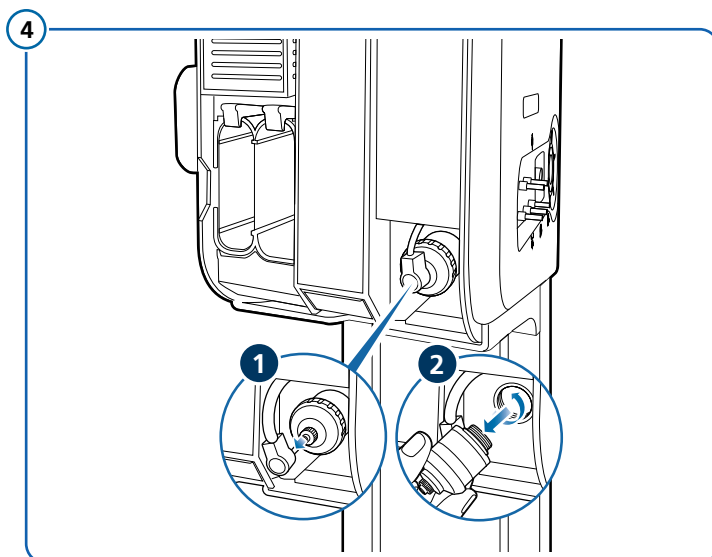
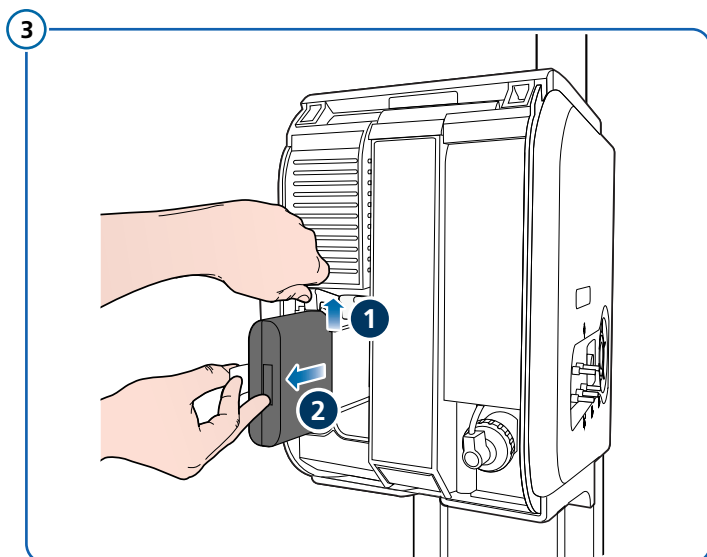
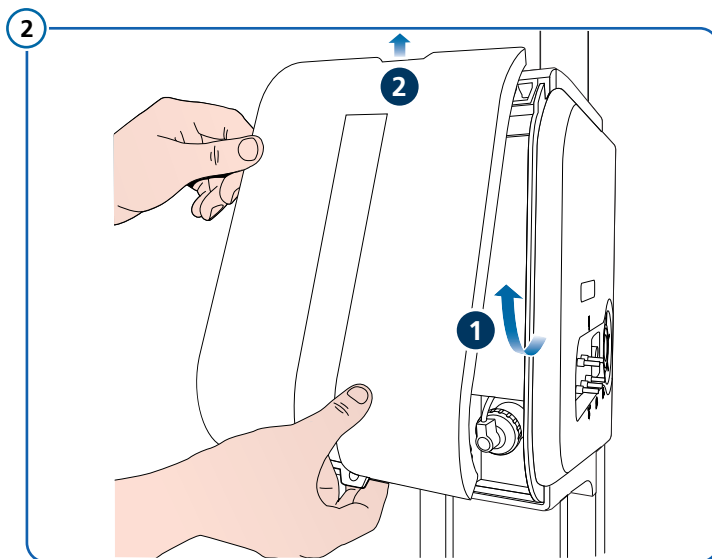
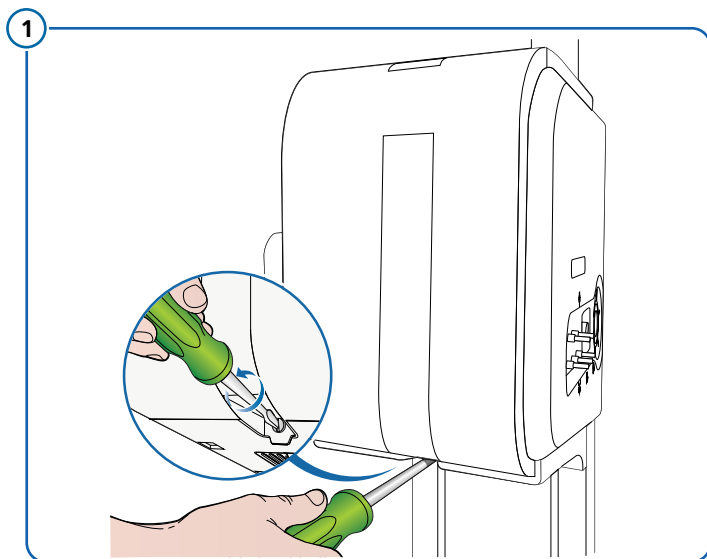
### Tests and checks after installation

For details on the electrical safety tests and preoperational checks on the HAMILTON-C6 ventilator, see Chapter 1 – Ventilator Unit and Interaction Panel Overview.

Fill in the HAMILTON-C6 ventilator *Testing and Acceptance Report* after the initial installation. See Chapter 21.

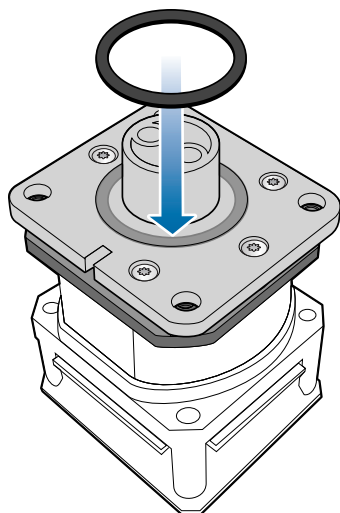


## How to assemble the paramagnetic O2 sensor

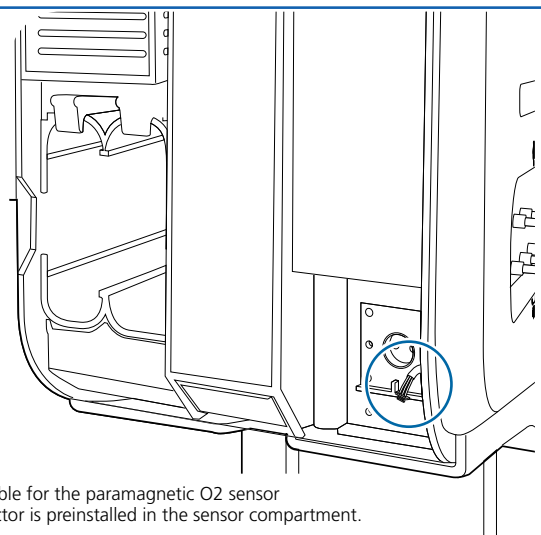




7

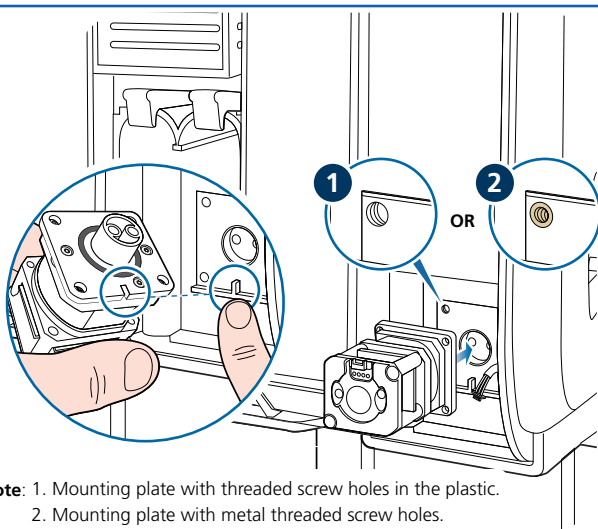


8



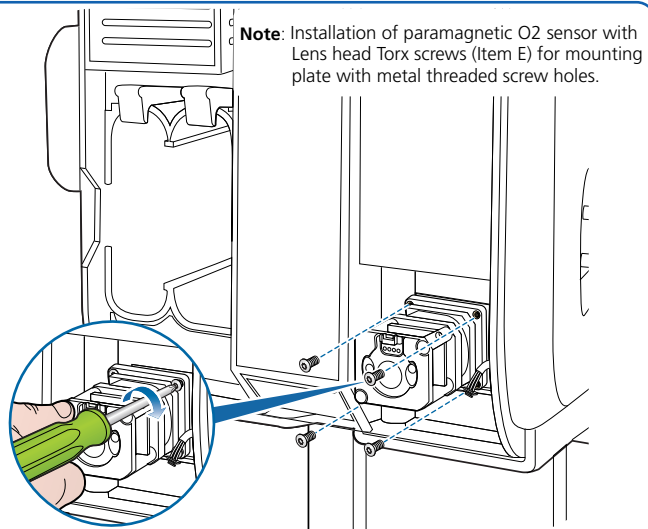
**Note:** The cable for the paramagnetic O2 sensor connector is preinstalled in the sensor compartment.

9



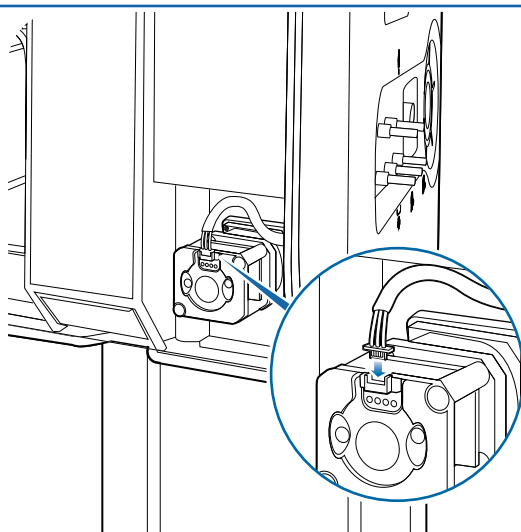
**Note:** 1. Mounting plate with threaded screw holes in the plastic.  
2. Mounting plate with metal threaded screw holes.

10

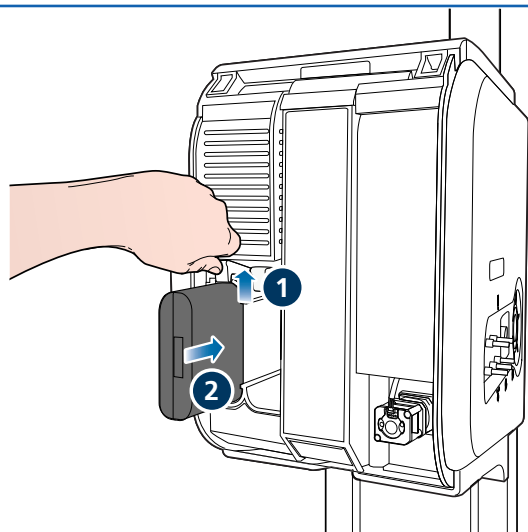


**Note:** Installation of paramagnetic O2 sensor with Lens head Torx screws (Item E) for mounting plate with metal threaded screw holes.

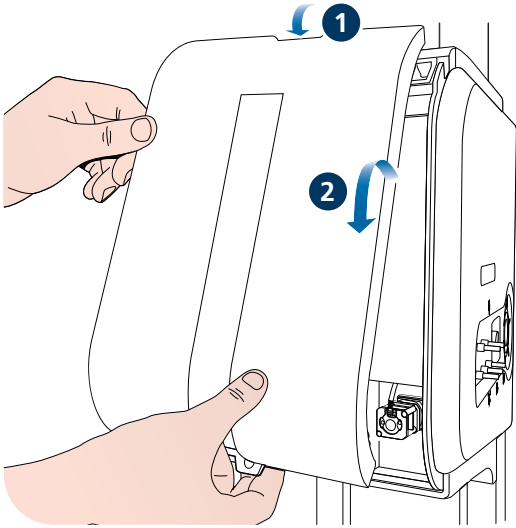
11



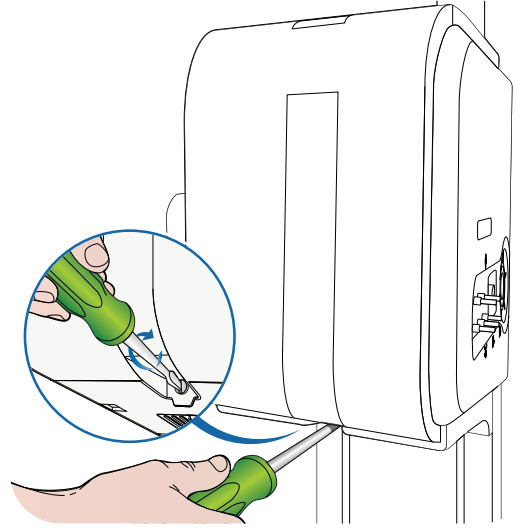
12



13



14



# HAMILTON-C6 Installation Guide

## HAMILTON-H900 Integration Assembly

English | 627075/04

**REF** 160783, 160969

### Required tools

- Allen key (size: 4 mm)
- Spanner/wrench: BS 8 mm or 5/16" AF

### Components

- A** 1 x HAMILTON-H900 integration kit (PN 160783)  
Contains:
- A1** 1 x Power cable
  - A2** 1 x Humidifier communication cable (RS232 DB9 serial adapter / 5-pin DIN male plug)
- B** 1 x HAMILTON-H900 mounting kit (PN 160969)  
Contains:
- B1** 1 x Hex socket cap screw, M8 x 12 mm
  - B2** 1 x Trolley mounting bracket
  - B3** 1 x M6 slot-nut
  - B4** 1 x Knurled head thumb screw, M6 x 16 mm
  - B5** 1 x M6 countersunk washer
- Mounting kit for third-party humidifier:
- B6** 1 x Mounting bracket
  - B7** 2 x Hex socket countersunk screws, M5 x 12 mm

**Note:** A HAMILTON-C6 Trolley Configuration (PN 160029) is required for the installation. Not included.

HAMILTON-H900 is required for the installation. Not included. Must be ordered separately. There are different voltage outputs for the HAMILTON-H900.

### Safety information

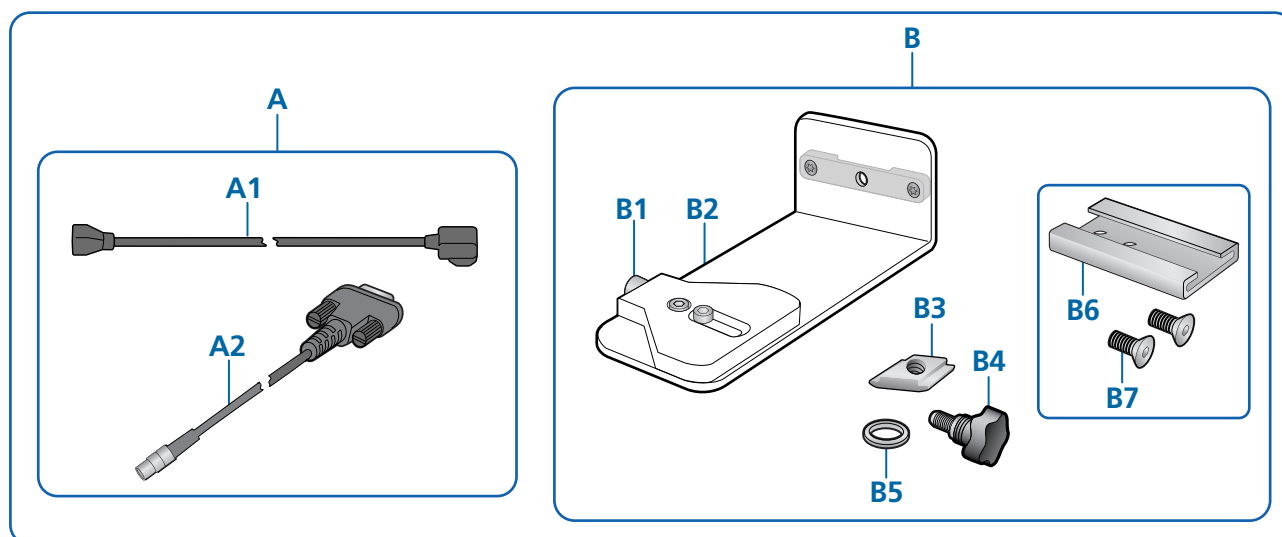
#### ⚠ WARNING

Turn off the VU and disconnect the power cable from the mains power supply before you start the installation. This will prevent possible electric shock or damage to the VU.

### Tests and checks after installation

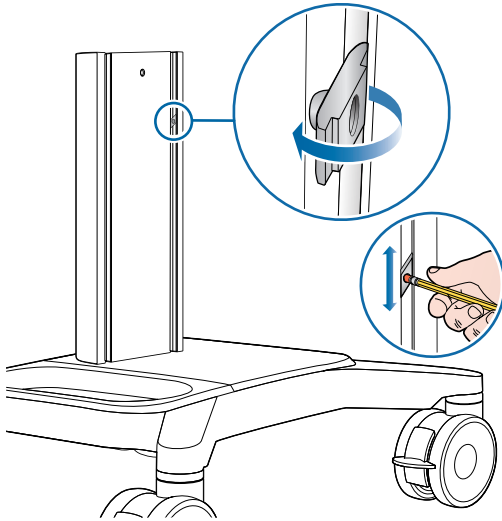
For details on the electrical safety tests and preoperational checks on the HAMILTON-C6 ventilator, see Chapter 1 – *Ventilator Unit and Interaction Panel Overview*.

Fill in the HAMILTON-C6 ventilator *Testing and Acceptance Report* after the initial installation. See Chapter 21.

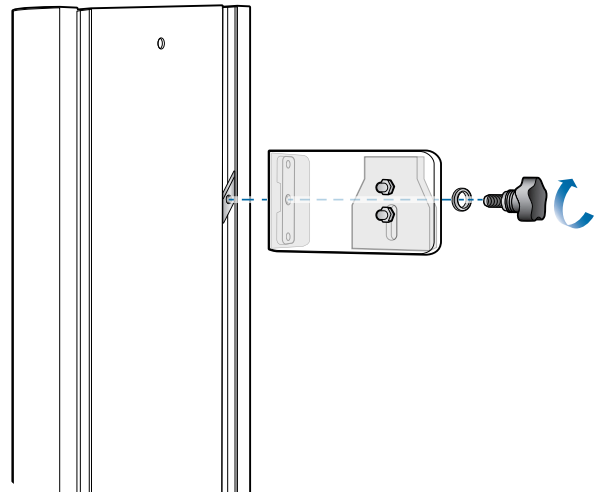


## How to assemble the HAMILTON-H900 integration kit

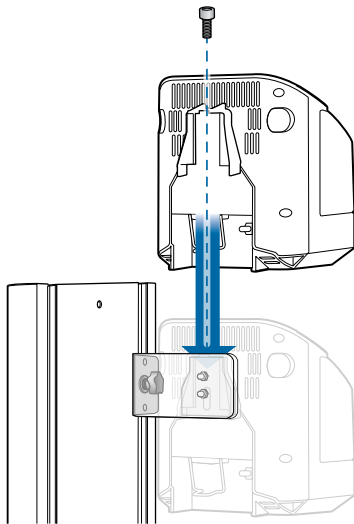
1



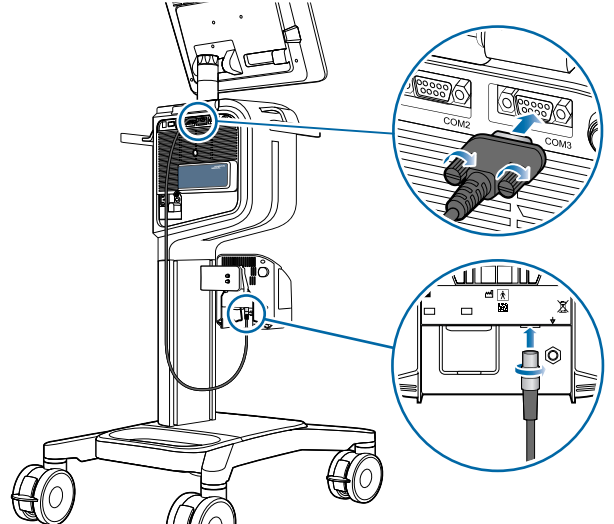
2



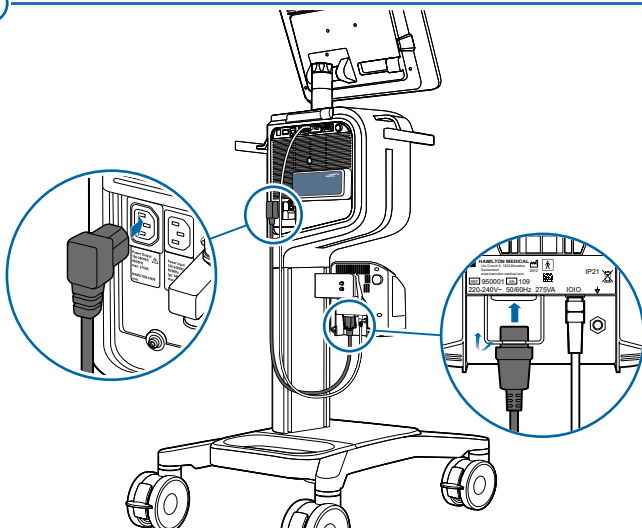
3



4



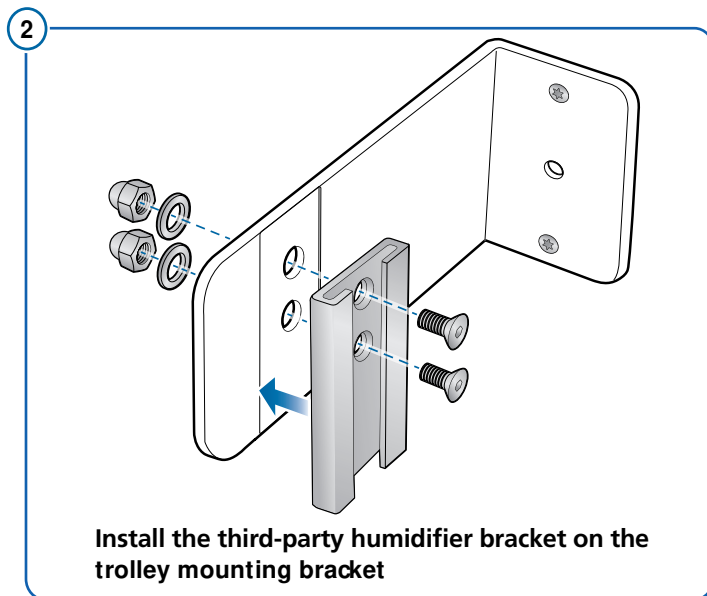
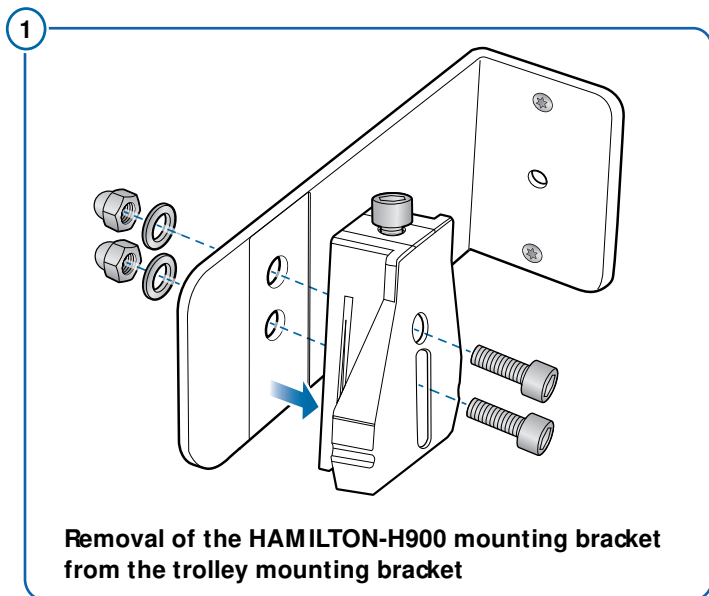
5



## How to assemble the mounting bracket for third-party humidifier

### To attach the third-party bracket to the trolley mounting bracket:

1. Remove the two dome-head hex nuts, the two washers, the two hex socket cap screws, and the HAMILTON-H900 mounting bracket from the trolley mounting bracket.
2. Use the two dome-head hex nuts and the two washers removed from the HAMILTON-H900 mounting bracket, and the two hex socket screws (Item B7) to mount the third-party bracket to the trolley mounting bracket.



---

Blank Page

# HAMILTON-C6 Installation Guide

## DISS/NIST Connector Assembly

English | 627075/04

**REF** 160470, 160471

### Required tools

Torx T10 screwdriver

### Components

**A** High-pressure oxygen connector:

1 x DISS connector (PN 160470)

or

1 x NIST connector (PN 160471)\*

**B** 2 x Torx screws, M3 x 10 mm

\* NIST connector (PN 160471) image shown in overview below.

**Note:** A HAMILTON-C6 ventilator (PN 160021) is required for the installation. Not included.

### Safety information

#### **WARNING**

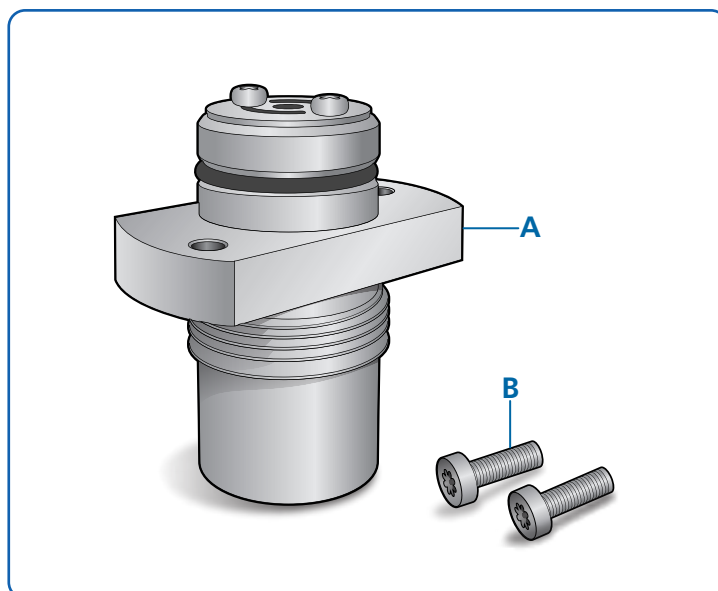
Turn off the VU and disconnect the power cable from the mains power supply before you start the installation. This will prevent possible electric shock or damage to the VU.

#### **NOTICE**

The installation for the DISS connector (PN 160470) and the NIST connector (PN 160471) are the same.

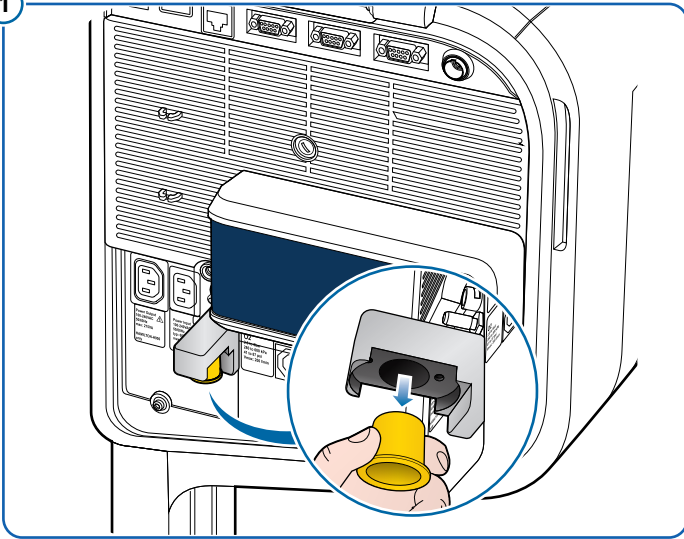
### Tests and checks after installation

After the installation, connect a high-pressure oxygen hose to the DISS or NIST connector to check for leakage.

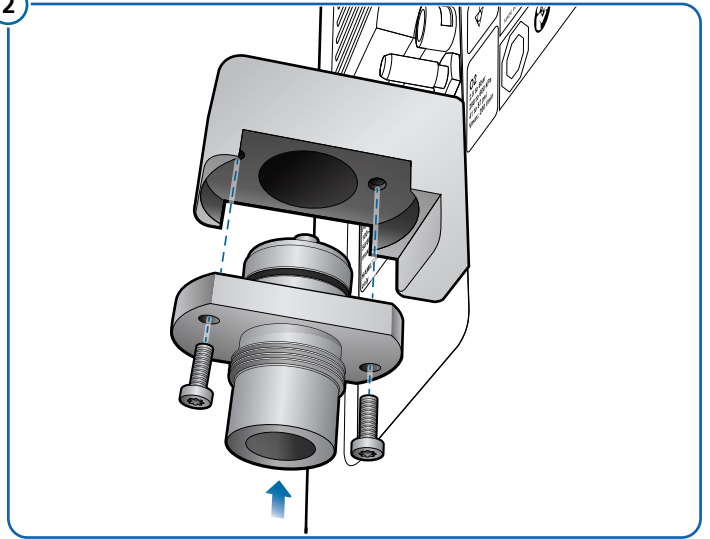


## How to assemble the DISS/NIST connector

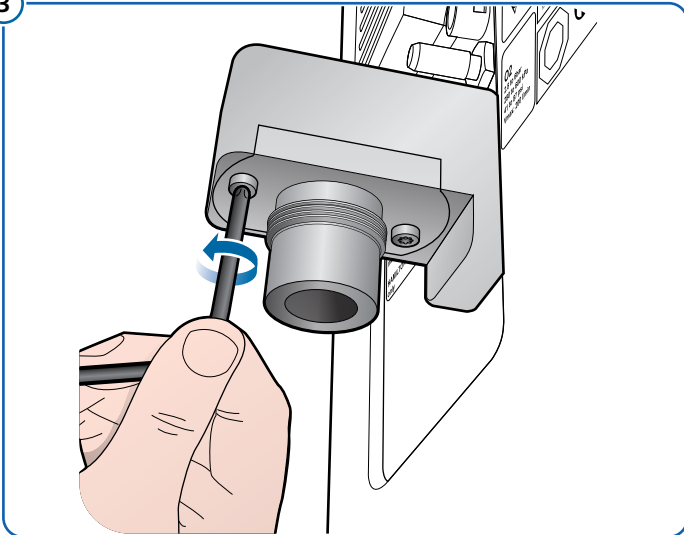
1



2



3





# HAMILTON-C6 Installation Guide

## Bed Docking System Assembly

English | 627075/04



10072473, 160178, 10103813

### Required tools

Allen key (size: 4 mm)

### Components

**A** Bed docking system (PN 10072473)

**B** Standard rail for trolley (PN 160178)\*  
Contains:

**B1** 1 x Standard rail

**B2** 1 x Slot-nut

**B3** 1 x Hex socket cap screw, M5 x 12 mm

\* Not included. Must be ordered separately.

**Note:** A HAMILTON-C6 Trolley Configuration (PN 160029) is required for the installation. Not included.

### Safety information

#### ⚠ WARNING

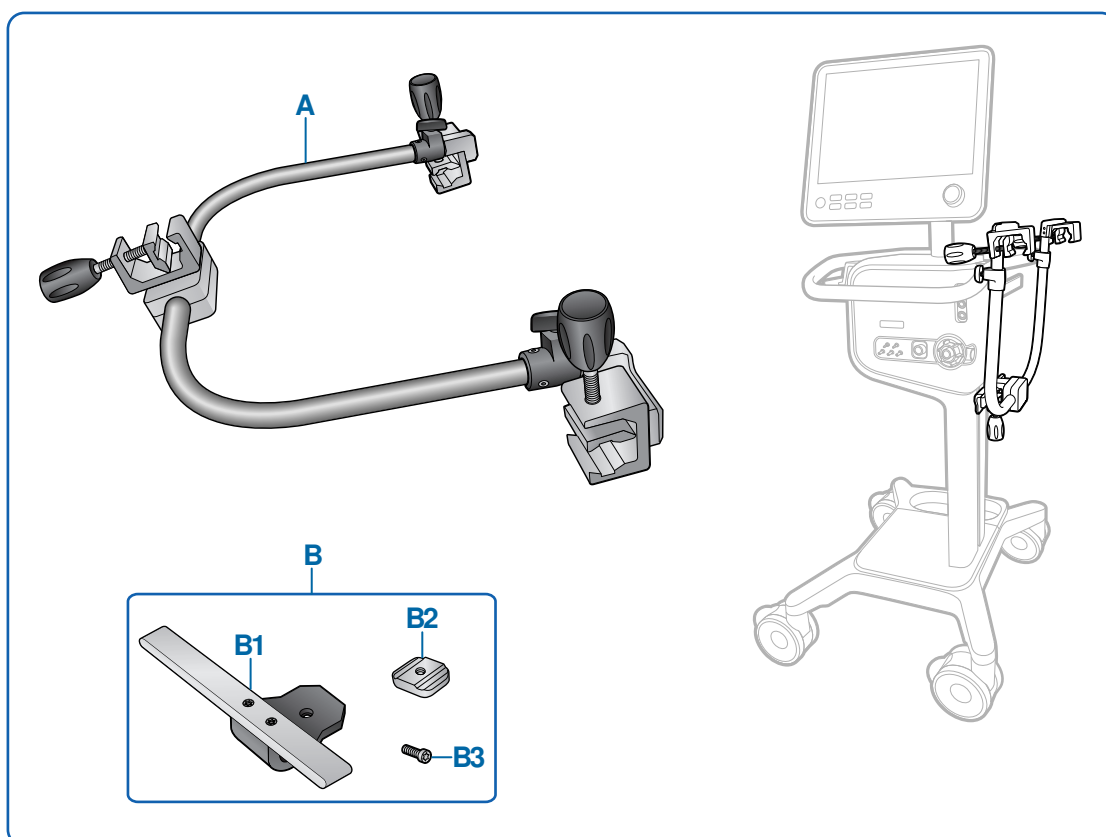
Make sure that the ventilator unit is turned off before you start the installation to prevent possible electric shock.

#### ⚠ CAUTION

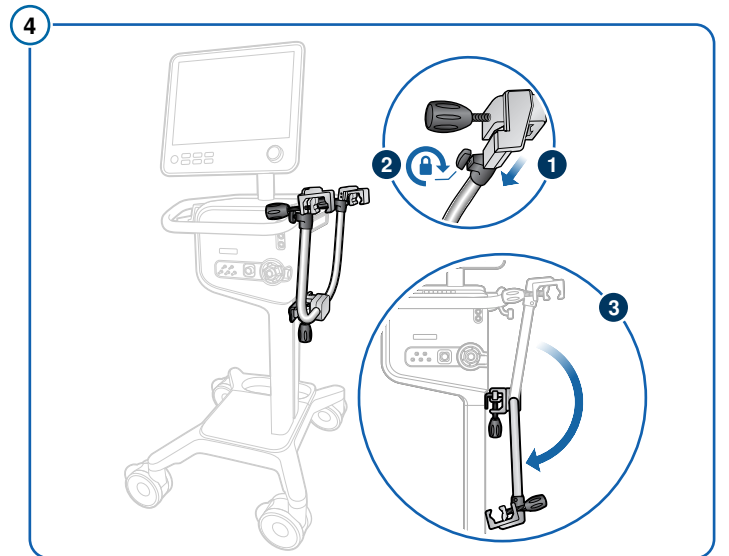
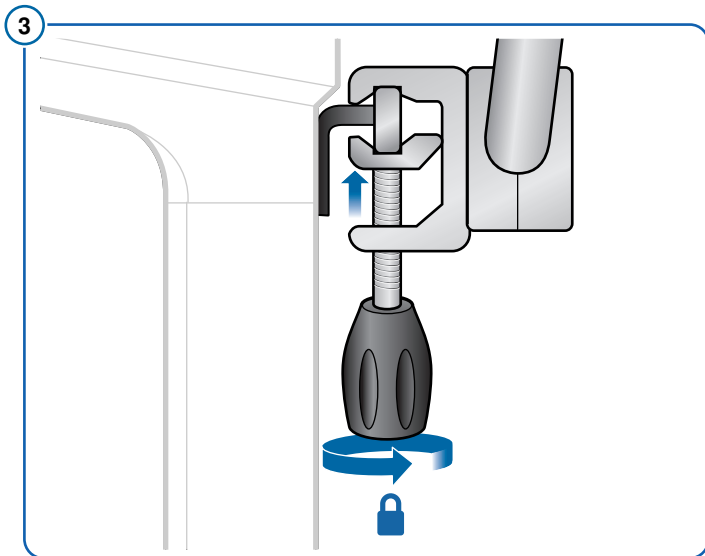
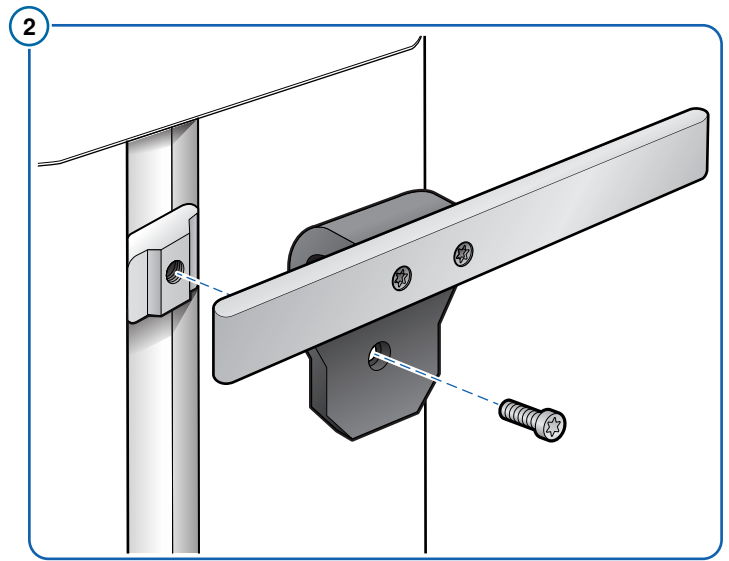
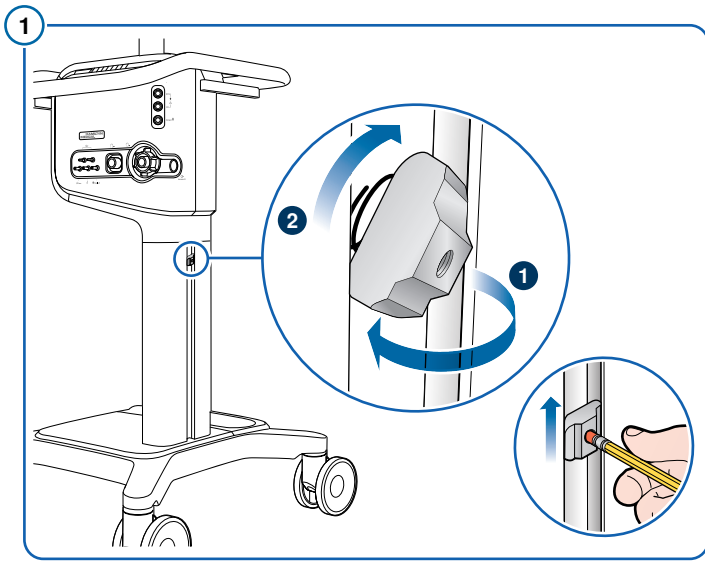
Lock the trolley wheel brakes before you start the installation.

#### NOTICE

The Bed Docking System Assembly (Item A) and the Standard Rail for Trolley (Item B) can be ordered together as a package with PN 10103813.



## How to assemble the bed docking system



# HAMILTON-C6 Installation Guide

## Water Bottle Holder with Quick-lock Assembly

English | 627075/04

**REF** 160162, 160154

### Required tools

Spanner/wrench: BS 13 mm or 1/2" AF

### Components

**A** 1 x Water bottle holder with quick-lock (PN 160162)

**B** 1 x Quick-lock socket set (PN 160154)\*

Contains:

**B1** 1 x Quick-lock socket

**B2** 1 x M8 washer

**B3** 1 x Hex bolt, reverse thread (fully threaded),  
M8 x 12 mm

\* Not included. The quick-lock socket set (PN 160154) and the water bottle holder with quick-lock must be ordered separately to complete the assembly.

**Note:** A HAMILTON-C6 Trolley Configuration (PN 160029) is required for the installation.  
Not included.

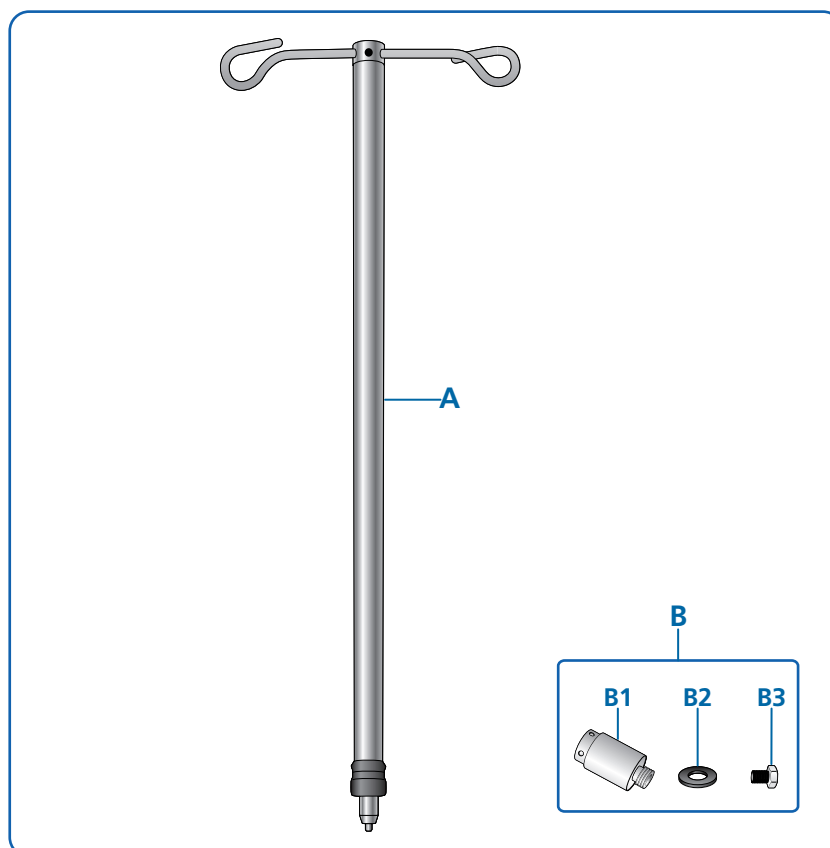
### Safety information

#### ⚠ CAUTION

*Lock the trolley wheel brakes before you start the installation.*

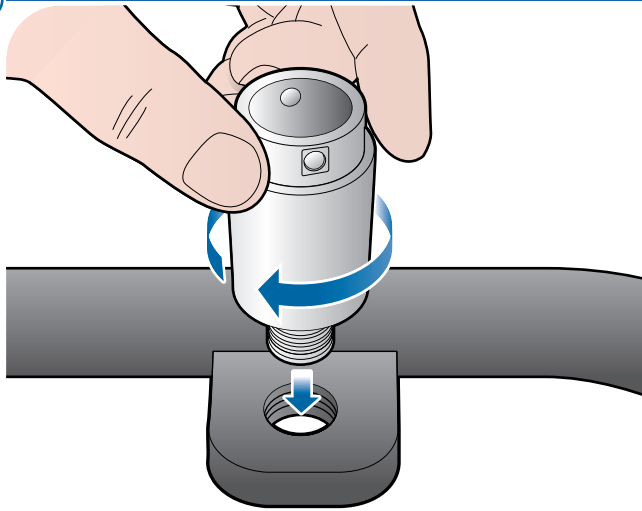
#### NOTICE

You can mount the water bottle holder with quick-lock on the left or right side of the ventilator unit handle.

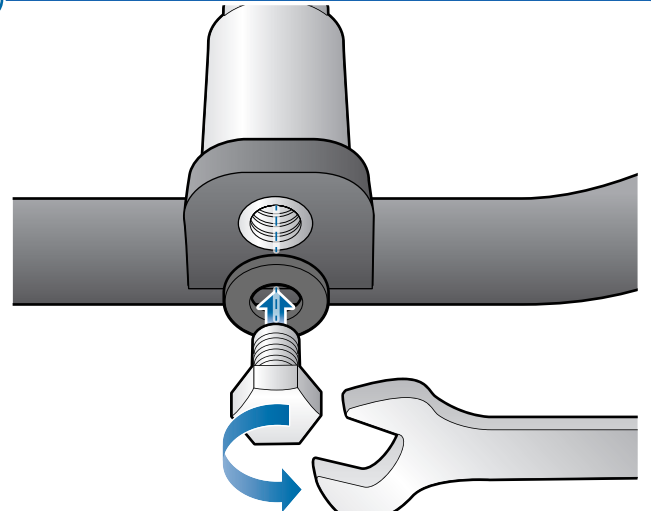


## How to assemble the water bottle holder with quick-lock

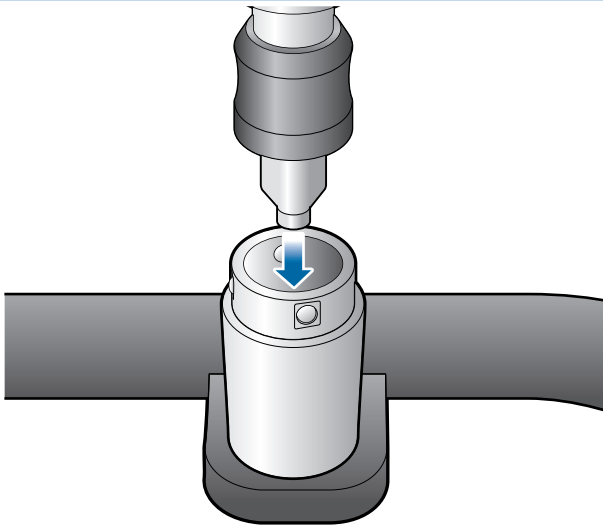
1



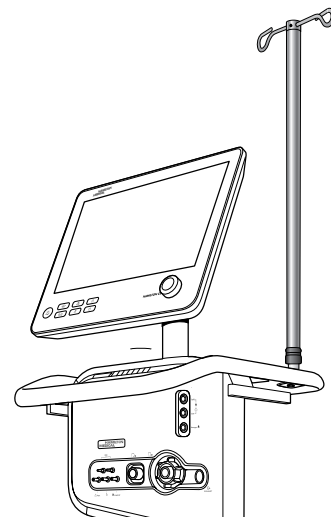
2



3



4



# HAMILTON-C6 Installation Guide

## Tubing Support Arm with Quick-lock Assembly

English | 627075/04

**REF** 160153

### Required tools

Spanner/wrench: BS 13 mm or 1/2" AF

### Components

- A** 1 x Plastic tubing holder, double (PN 281673)
- B** 1 x Tubing support arm with quick-lock (PN 160153)
- C** 1 x Quick-lock socket
- D** 1 x M8 washer
- E** 1 x Hex bolt, reverse thread (fully threaded), M8 x 12 mm

**Note:** A HAMILTON-C6 ventilator (Trolley Configuration PN 160029) is required for the installation. Not included.

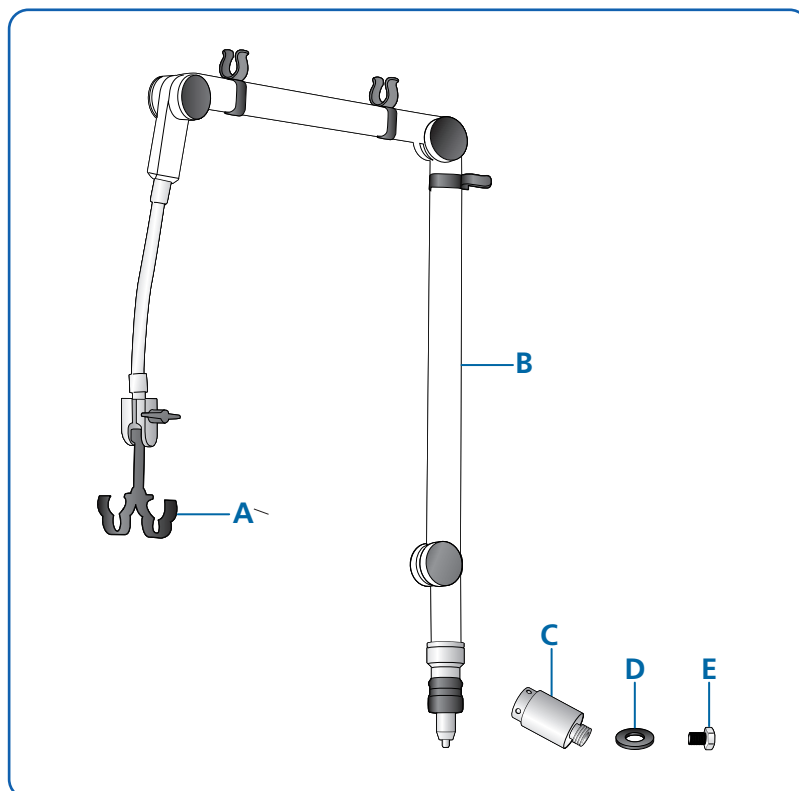
### Safety information

#### ⚠ CAUTION

*Lock the trolley wheel brakes before you start the installation.*

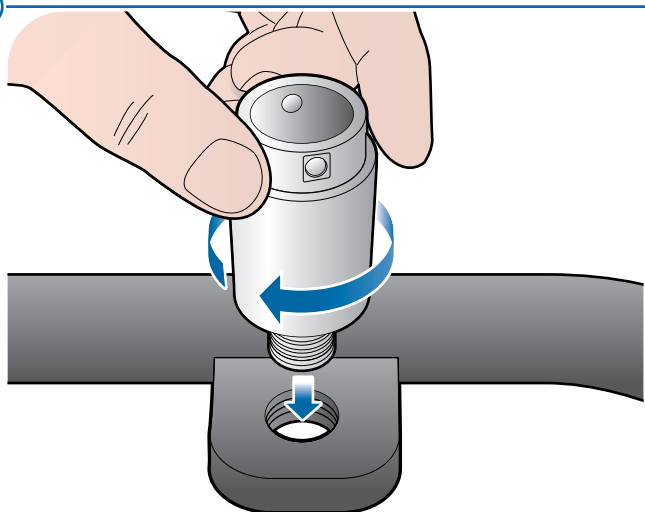
#### NOTICE

You can mount the tubing support arm with quick-lock on the left or right side of the ventilator unit handle.

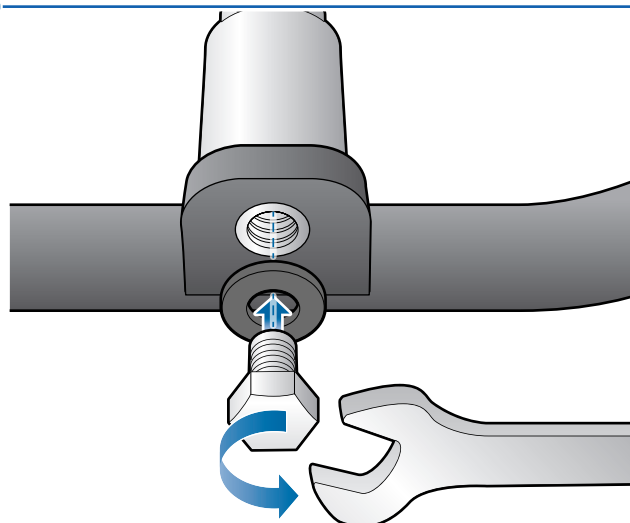


## How to assemble the tubing support arm with quick-lock

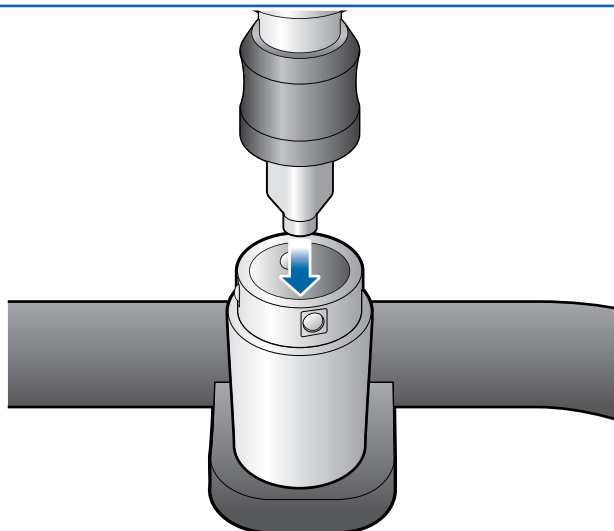
1



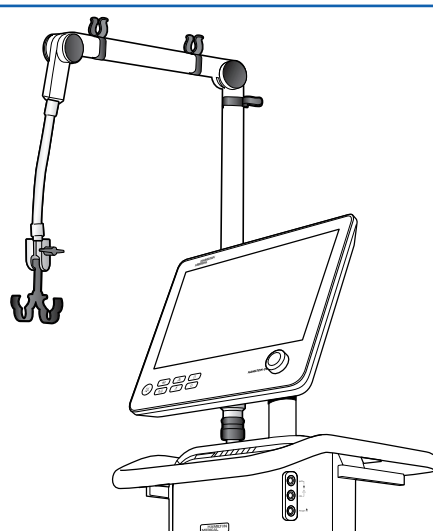
2



3



4



# HAMILTON-C6 Installation Guide

## Support Arm with Quick-positioning Assembly

English | 627075/04

**REF** 281533, 281671, 282003

### Required tools

No tools required

### Components

- A** 1 x Quick-positioning support arm (PN 281533)\*  
Includes:  
1 x Double tubing holder, aluminium (PN 281910)  
1 x Single tubing holder, plastic (PN 281674)  
or  
**B** 1 x Quick-positioning basic support arm (PN 281671)  
Includes:  
1 x Double tubing holder, plastic (PN 281673)  
or  
**C** 1 x Blue-white support arm (PN 282003)

\* Only the support arm with quick-positioning (Item A, PN 281533) image is shown in the overview below..

**Note:** A HAMILTON-C6 Trolley Configuration (PN 160029) is required for the installation.  
Not included.

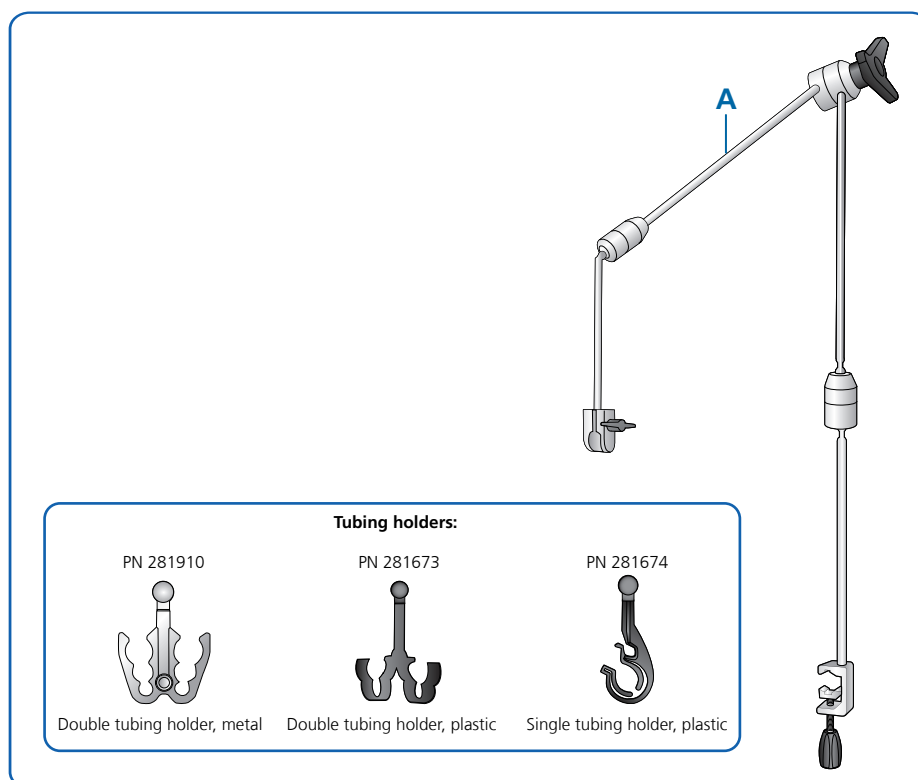
### Safety information

#### ⚠ CAUTION

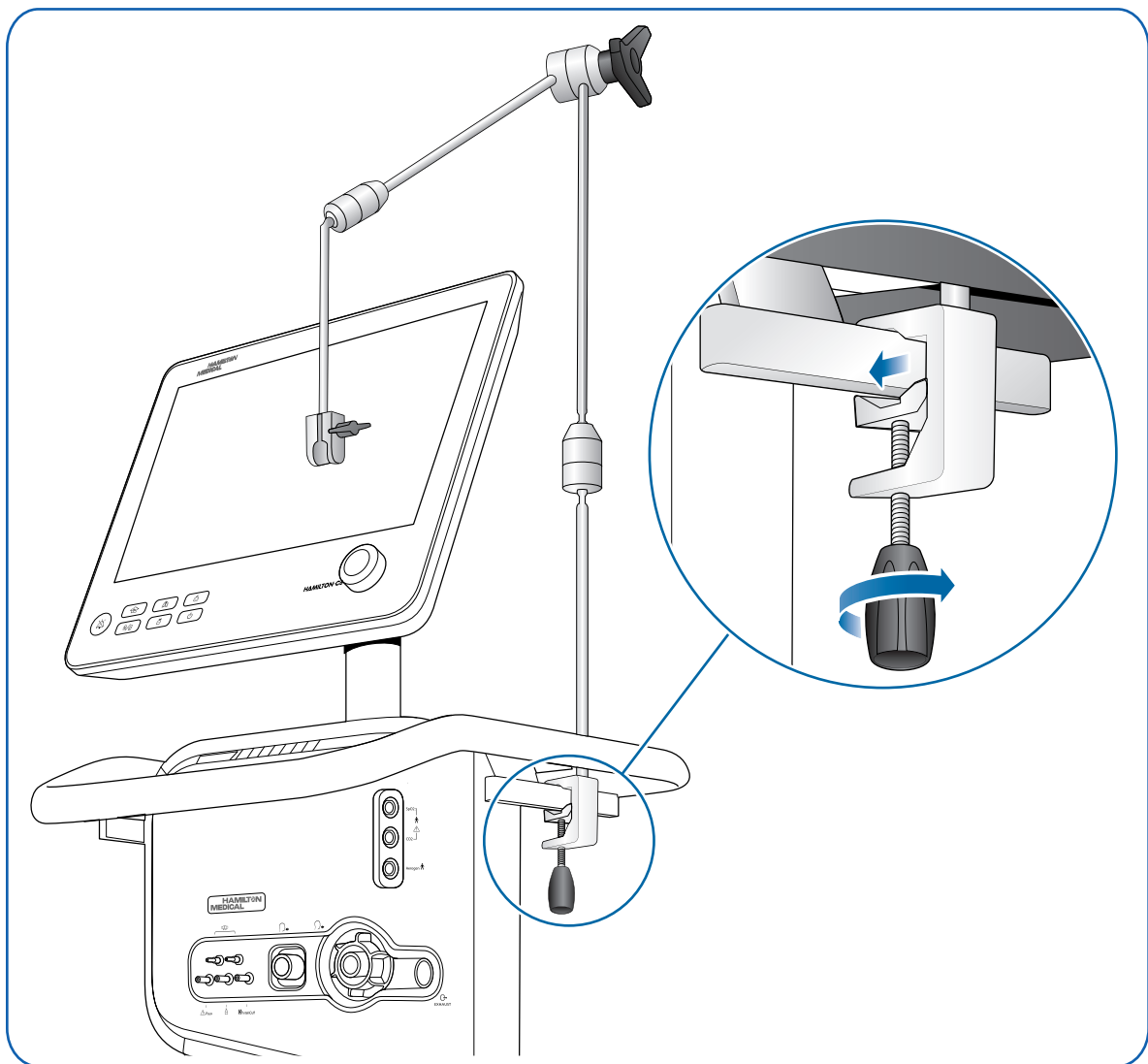
Lock the trolley wheel brakes before you start the installation.

#### NOTICE

- The installation for the support arm with quick-positioning (PN 281533), support arm with quick-positioning basic (PN 281671), and blue-white (PN 282003) support arm are the same.
- You can mount each one of the support arms (PN 281533, PN 281671, and PN 282003) on the left or right side standard rail on the ventilator unit handle.



## How to assemble the support arm with quick-positioning





# HAMILTON-C6 Installation Guide

## O2 Cylinder Holder Bracket Assembly

English | 627075/04

**REF** 160971

### Required tools

No tools required

### Components

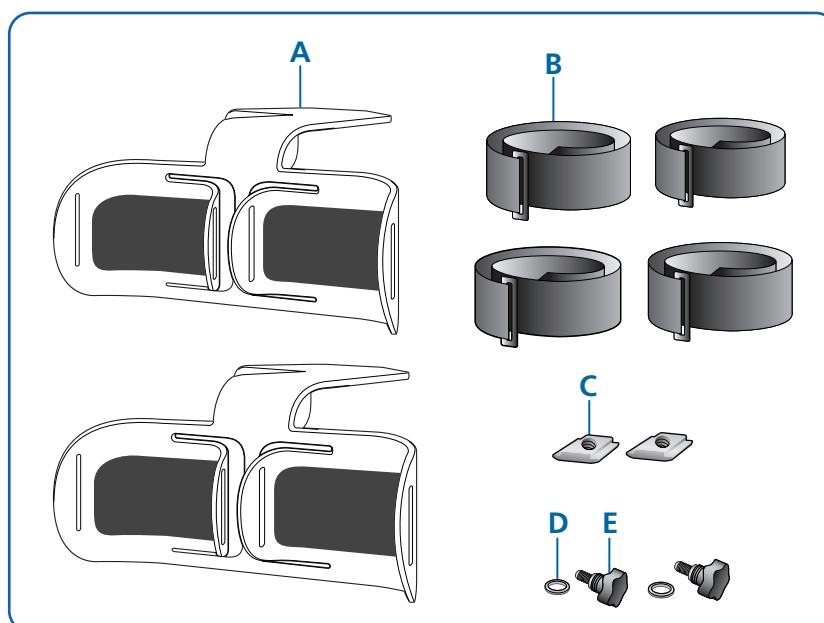
- A** 2 x O2 cylinder holder brackets (PN 160135)
- B** 4 x Velcro straps  
Dimension: 550 mm (L) x 50 mm (W)
- C** 2 x Slot-nuts
- D** 2 x M6 countersunk washers
- E** 2 x Knurled head thumb screws, M6 x 16 mm

**Note:** A HAMILTON-C6 Trolley Configuration (PN 160029) is required for the installation  
Not included.

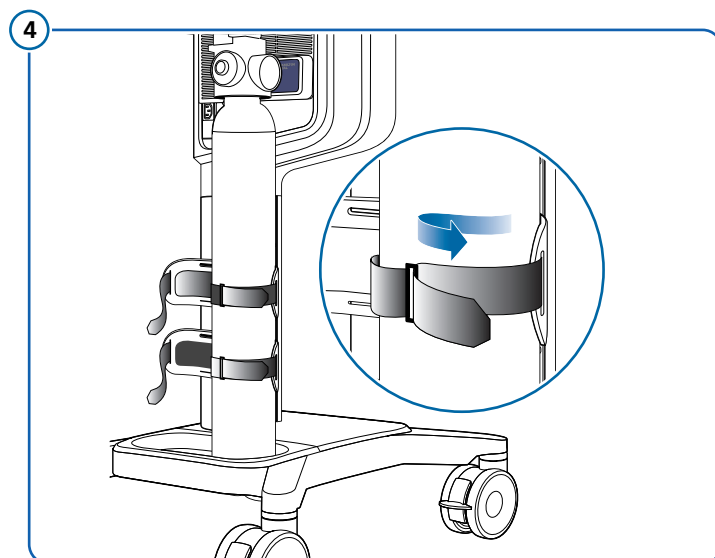
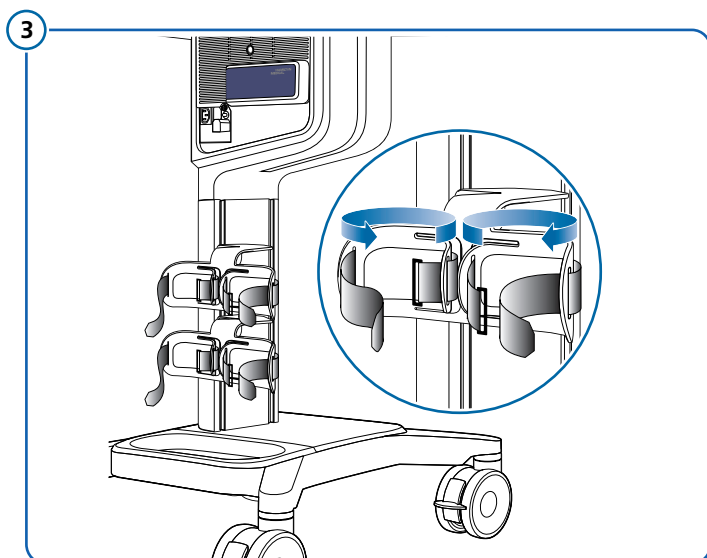
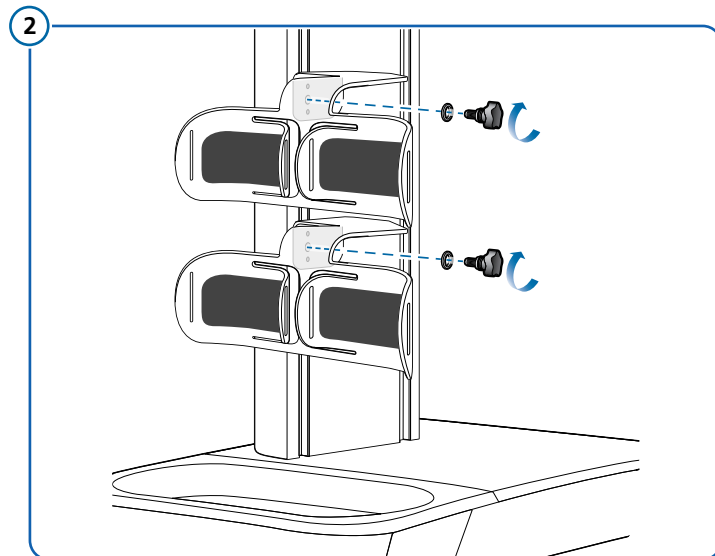
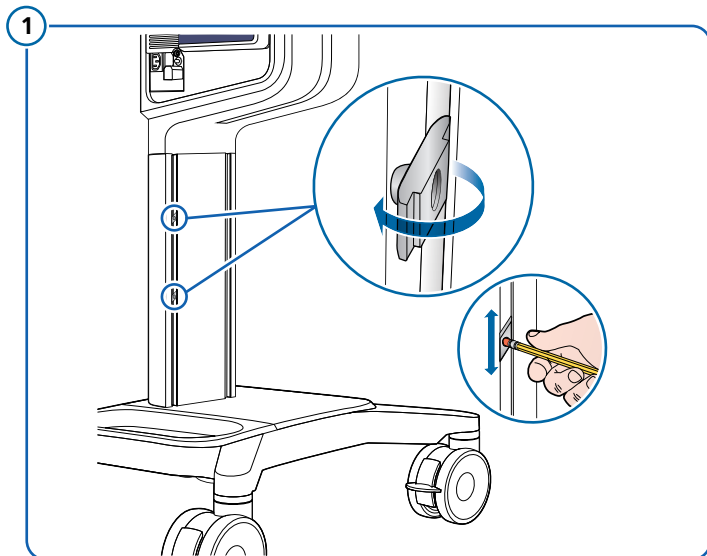
### Safety information

#### ⚠ CAUTION

- Lock the trolley wheel brakes before you start the installation.
- The O2 cylinder holder brackets must be mounted on the left side of the trolley column.



## How to assemble the O2 cylinder holder bracket



# HAMILTON-C6 Installation Guide

## Basket Assembly

English | 627075/04

**REF** 160177

### Required tools

Allen key (size: 5 mm)

### Safety information

#### ⚠ CAUTION

*Lock the trolley wheel brakes before you start the installation.*

### Components

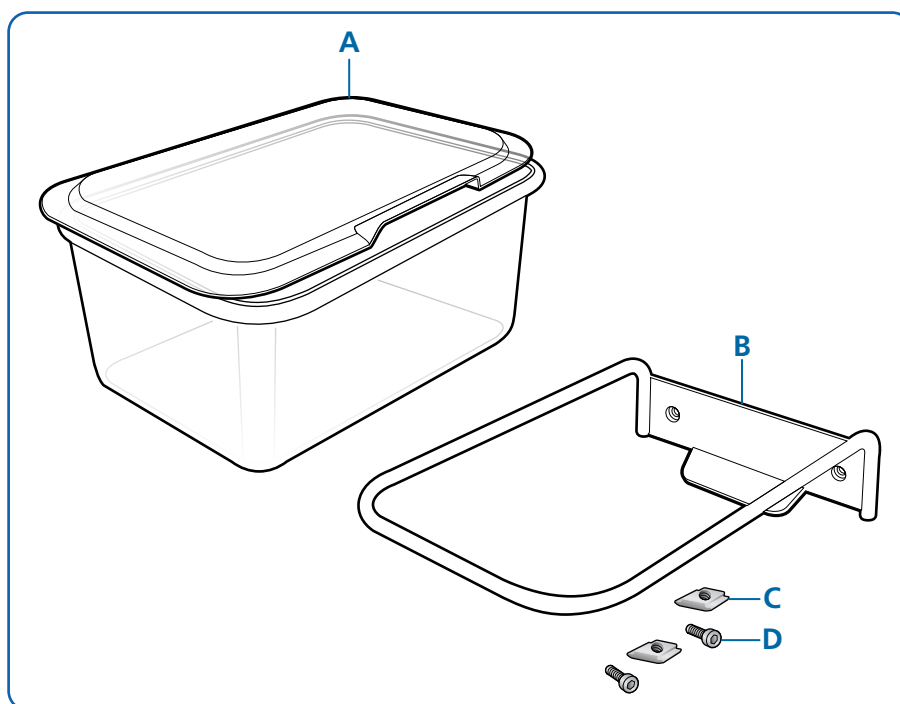
**A** 1 x Trolley basket with cover (PN 160116)

**B** 1 x Mounting bracket (PN 160113)

**C** 2 x Slot-nuts

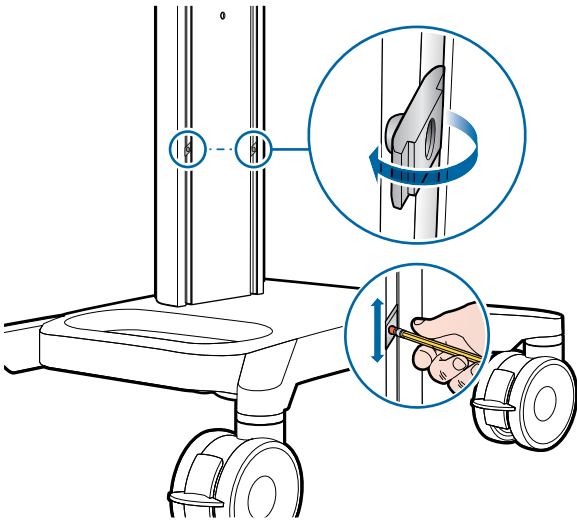
**D** 2 x Hex socket cap screws, M6 x 12 mm

**Note:** A HAMILTON-C6 Trolley Configuration (PN 160029) is required for the installation  
Not included.

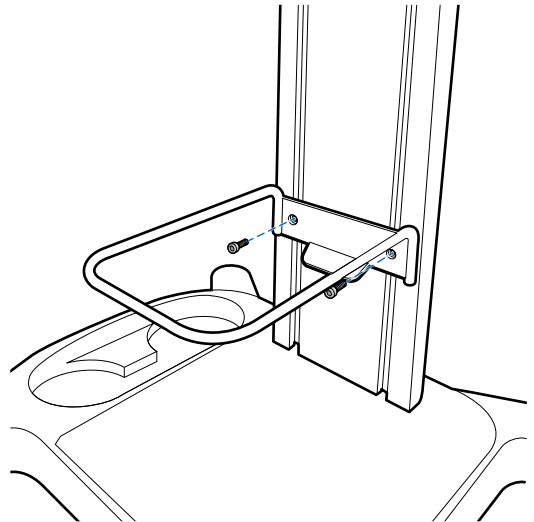


## How to assemble the basket

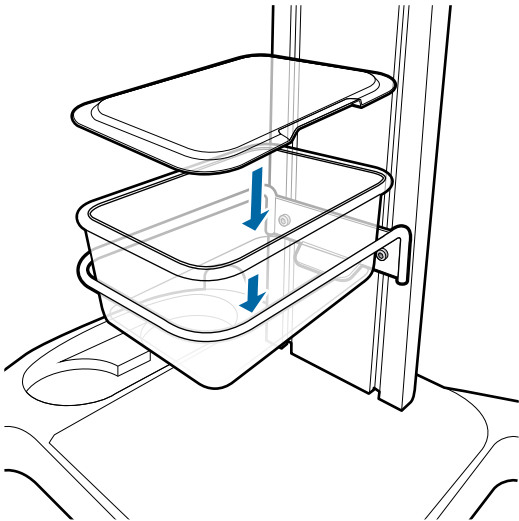
1



2



3



# HAMILTON-C6 Installation Guide

## O2 Supply Hose Hanger (Including Cable Clips)

English | 627075/04

**REF** 160165

### Required tools

No tools required

### Safety information

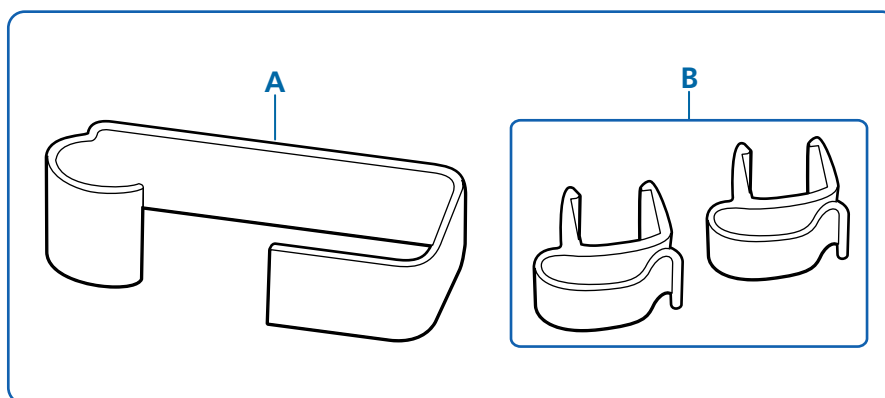
#### **⚠ CAUTION**

*Lock the trolley wheel brakes before you start the installation.*

### Components

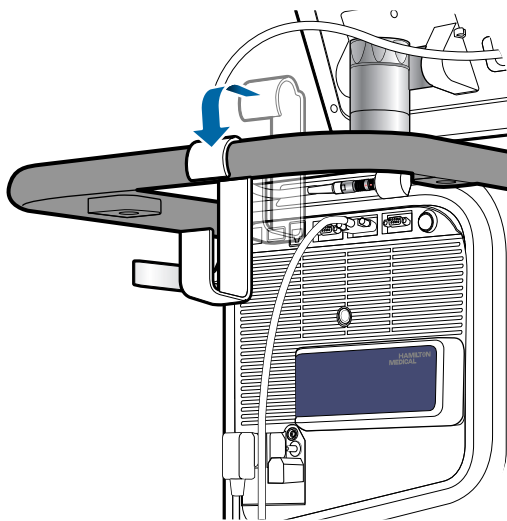
- A** 1 x O2 supply hose hanger (PN 160118)
- B** 2 x Standard rail clips for accessories cables (PN 361104)

**Note:** A HAMILTON-C6 Trolley Configuration ( N 160029) is required for the installation. Not included.

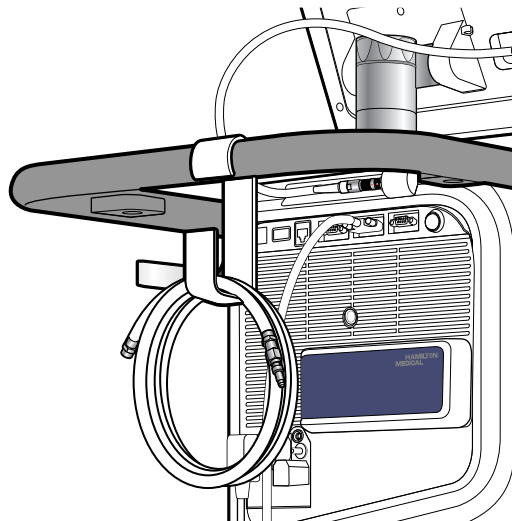


## How to assemble the oxygen supply hose hanger

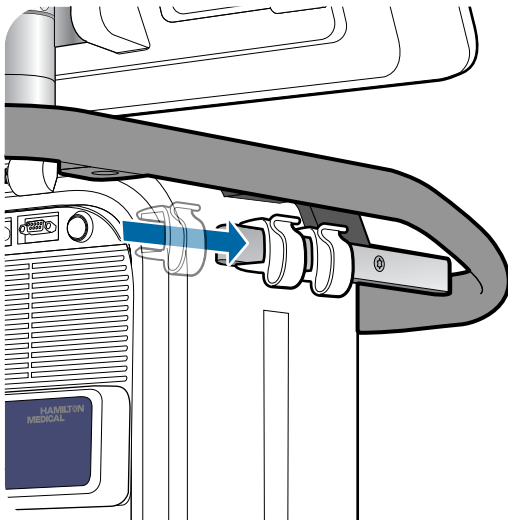
1



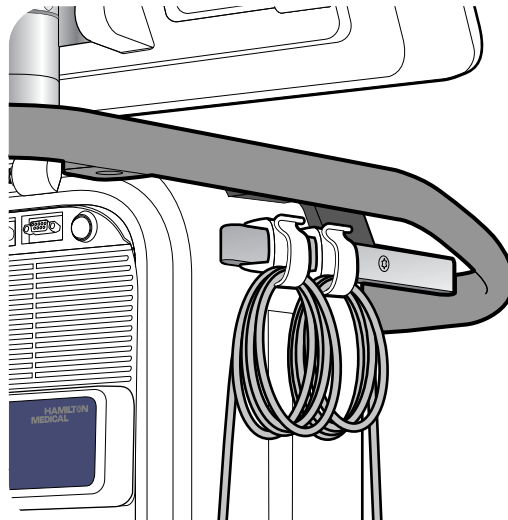
2



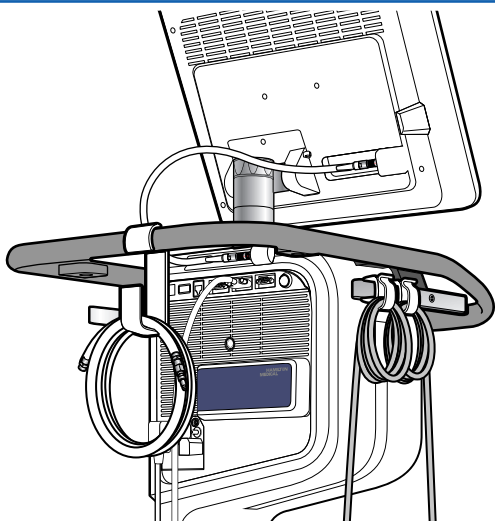
3



4



5




**REF** 10068141

Required tools

No tools required

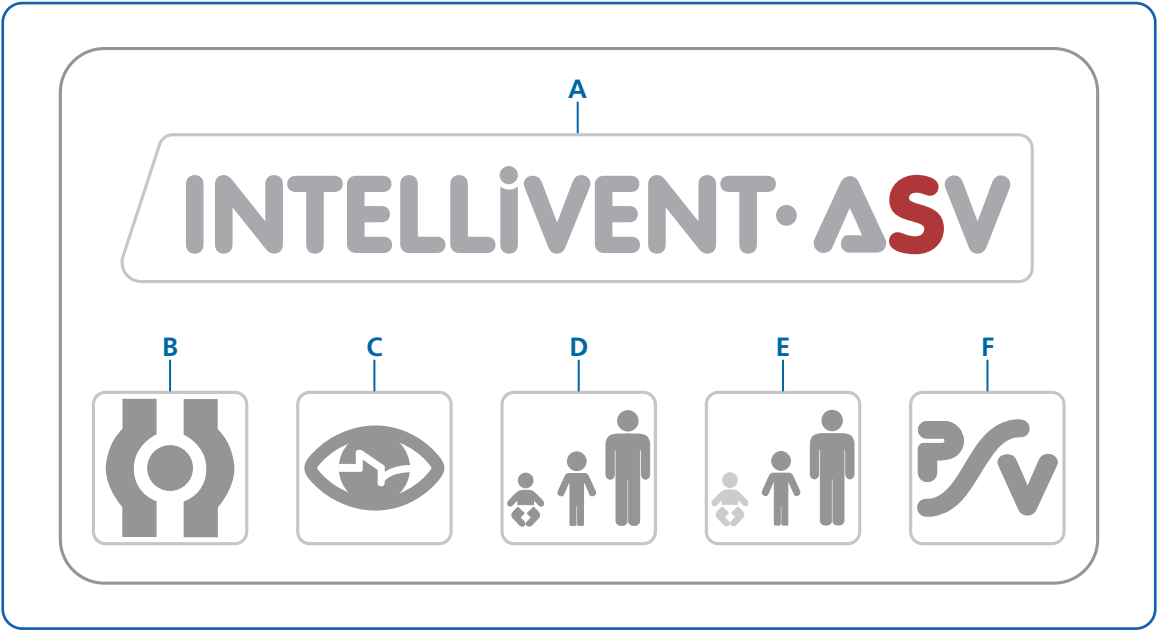
Safety information

 **CAUTION**

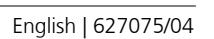
Attach the option sticker only if the option is installed on the ventilator unit.

Options stickers

- A** 1 x INTELLiVENT-ASV option sticker
- B** 1 x Integrated IntelliCuff option sticker
- C** 1 x IntelliSync+ option sticker
- D** 1 x Patient group (neonate, paediatric, and adult) option sticker
- E** 1 x Patient group (paediatric and adult) option sticker
- F** 1 x P/V Tool Pro option sticker



## 60





# HAMILTON-C6 Installation Guide

## Testing and Acceptance Report

English | 627075/04

REF 160021

### HAMILTON-C6 Ventilator – Testing and Acceptance Report for Initial Installation

#### CAUTION

*Do not put the HAMILTON-C6 ventilator into service if any of the tests/checks specified in the Testing and Acceptance Report fails. Service the ventilator before you put it into service.*

Do the following tests and checks after the initial installation of the HAMILTON-C6 ventilator:

HAMILTON-C6 Ventilator – Testing and Acceptance Report for Initial Installation				[1/2]	
Interaction panel (IP) serial number: SN _____ Ventilator unit (VU) serial number: SN _____ Software version: _____ Name of hospital and place: _____ Name of distributor and country: _____ Name of installer: _____ Date (YYYY/MM/DD): _____ / _____ / _____					
Task/ Check	Verify or observe...	HAMILTON-C6 ventilator Manual Ref.	Task/ Check Status:		
			OK	Not OK	
Check that the VU-IP cable is connected correctly to the IP and VU.		See the Installation Guide (PN 627075), Chapter 4 <i>Shelf Mount Solution Assembly</i>	<input type="checkbox"/>	<input type="checkbox"/>	
Check that the DISS or NIST connector is installed and a high oxygen supply hose is connected.	The gas hose connection is leak-tight.	See the Installation Guide (PN 627075), Chapter 12; and the Operator's Manual (PN 624945), Chapter 3 <i>Preparing the ventilator.</i>	<input type="checkbox"/>	<input type="checkbox"/>	
Check that the ventilator battery is installed.		See the Installation Guide, Chapter 10.	<input type="checkbox"/>	<input type="checkbox"/>	
Connect the breathing circuits.	The breathing circuits are assembled correctly.	See the Operator's Manual (PN 624945), Chapter 3 <i>Preparing the ventilator.</i>	<input type="checkbox"/>	<input type="checkbox"/>	
Connect the VU power cable to an AC power socket.		See the Operator's Manual (PN 624945), Chapter 3 <i>Preparing the ventilator.</i>	<input type="checkbox"/>	<input type="checkbox"/>	
Do a functional check on the VU and the IP power cycle (on and off): <b>Note:</b> Wait for the VU to complete the start up or shut down process for each power cycle. <ul style="list-style-type: none"> <li>Turn on, then turn off the VU with the push-button switch: push and release the switch on the rear of the VU.</li> <li>Turn on, then turn off the IP with the Power/Standby key: press and release the Power/Standby key on the lower front of the IP.</li> </ul>	During the startup process, the IP alarm lamp flashes red, yellow, and blue followed by a short sound for the speaker test and a beep for the buzzer test.	See the Operator's Manual (PN 624945), Chapter 3 <i>Preparing the ventilator.</i>	<input type="checkbox"/>	<input type="checkbox"/>	

HAMILTON-C6 Ventilator – Testing and Acceptance Report for Initial Installation					[2/2]
Task/ Check	Verify or observe...	HAMILTON-C6 ventilator Manual Ref.	Task/ Check Status:		
			OK	Not OK	
Set the date and time.		See the Operator's Manual (PN 624945), Chapter 10 <i>Ventilation settings and functions</i> .	<input type="checkbox"/>	<input type="checkbox"/>	
Select the desired language for the user interface.	Verify that information on the display is shown in the selected language.	See the Operator's Manual (PN 624945), Chapter 14 <i>Configuration</i> .	<input type="checkbox"/>	<input type="checkbox"/>	
Do the tightness test, then calibrate the flow sensor.	<ul style="list-style-type: none"><li>• The tightness test passes: all breathing circuits' connections are leak-tight.</li><li>• The flow calibration is successful.</li></ul>	See the Operator's Manual (PN 624945), Chapter 5 <i>Specifying ventilation settings</i> .	<input type="checkbox"/>	<input type="checkbox"/>	
Calibrate the oxygen sensor.		See the Operator's Manual (PN 624945), Chapter 5 <i>Specifying ventilation settings</i> .	<input type="checkbox"/>	<input type="checkbox"/>	
Do a functional check on the communication board: CO2 and SpO2 sensors, and the Aerogen® cables		See the Operator's Manual (PN 624945), Chapter 14 <i>Configuration</i> and the <i>Communication board User Guide</i> .	<input type="checkbox"/>	<input type="checkbox"/>	
Simulate the loss of external power (AC) alarm test.	The loss of external power alarm is generated and that the ventilator is powered by its backup battery.	See the Operator's Manual (PN 624945), Chapter 5 <i>Specifying ventilation settings</i> .	<input type="checkbox"/>	<input type="checkbox"/>	
Reconnect the VU power cable to the AC power socket.	The alarm resets and the ventilator is powered again by the AC power.	See the Operator's Manual (PN 624945), Chapter 5 <i>Specifying ventilation settings</i> .	<input type="checkbox"/>	<input type="checkbox"/>	
Check that the IntelliCuff is setup correctly if installed.		See the Installation Guide (PN 627075), Chapter 8; and the Operator's Manual (PN 624945), Chapter 4 <i>Setting up external devices and sensors</i> .	<input type="checkbox"/>	<input type="checkbox"/>	
Check that the HAMILTON-H900 humidifier is setup correctly if installed.		See the Installation Guide (PN 627075), Chapter 9; and the Operator's Manual (PN 624945), Chapter 4 <i>Setting up external devices and sensors</i> .	<input type="checkbox"/>	<input type="checkbox"/>	
Do the electrical safety tests as specified in the <i>HAMILTON-C6 Service Manual</i> .	Verify that the electrical safety tests are performed successfully.	See the Service Manual (PN 627038), Chapter 6 <i>Electrical safety</i> .	<input type="checkbox"/>	<input type="checkbox"/>	
Reset the Service date after you have completed all the tests/checks. <b>Note:</b> The next service date will be set to one calendar year based on the current date.		See the Service Manual (PN 627038), Chapter 7 <i>Service software</i> .	<input type="checkbox"/>	<input type="checkbox"/>	

Record of test equipment

Test Equipment	Type/Model	Serial Number (SN)
Electrical safety analyzer	_____	SN _____

NOTICE

- If the HAMILTON C6 ventilator does not pass the *initial installation tests and checks*, contact your local Hamilton Medical representative or Hamilton Medical’s technical support for assistance.
- After you have completed the *Initial Installation Testing and Acceptance Report* for the HAMILTON-C6 ventilator, please send a copy of the report to your local Hamilton Medical representative or Hamilton Medical ([techsupport@hamilton-medical.com](mailto:techsupport@hamilton-medical.com)), and save/archive the original report for your records.

Remarks:

Date (YYYY/MM/DD):

/

/

Signature:







More information and free software simulation:  
[www.hamilton-C6.com](http://www.hamilton-C6.com)



**HAMILTON  
MEDICAL**  
Intelligent Ventilation since 1983



Hamilton Medical AG  
Via Crusch 8, 7402 Bonaduz, Switzerland  
☎ +41 58 610 10 20  
[info@hamilton-medical.com](mailto:info@hamilton-medical.com)  
[www.hamilton-medical.com](http://www.hamilton-medical.com)

Distributor in USA:  
Hamilton Medical, Inc.  
4990 Energy Way, Reno, NV 89520  
☎ +41 58 610 10 20  
[info@hamilton-medical.com](mailto:info@hamilton-medical.com)  
[www.hamilton-medical.com](http://www.hamilton-medical.com)