

— Watch Winder —

Manual

Please Read Before Use

PREPARATION BEFORE USE:

Firstly, winding the automatic watch which is lack of kinetic energy by shaking in hands for 60-70 times, so that it has more than half of the kinetic energy, then put in the watch winder after the time is calibrated.

GEAR SELECTION INSTRUCTIONS:

The direction for the watch winding can refer to the manual or consult with the watch brand seller. Generally, almost the automatic mechanical watches use clockwise winding, so can use clockwise winding for 48 hours for testing, if everything works fine(the reasonable tolerance of the mechanical watch itself is also normal), it means clockwise winding is suitable for the automatic mechanical watch. If the automatic mechanical watch stops or is obviously slow, then it need to hand-winding for the automatic mechanical watch till more than half of the kinetic energy, and try other counterclockwise or clockwise-counterclockwise gear for 48 hours, Observing the automatic mechanical watch in some directions can achieve the normal operation of the uplink redundancy. If two tables on one turntable are not tested in the same winding direction, it is necessary to put in different tables and set different direction for watch winding.

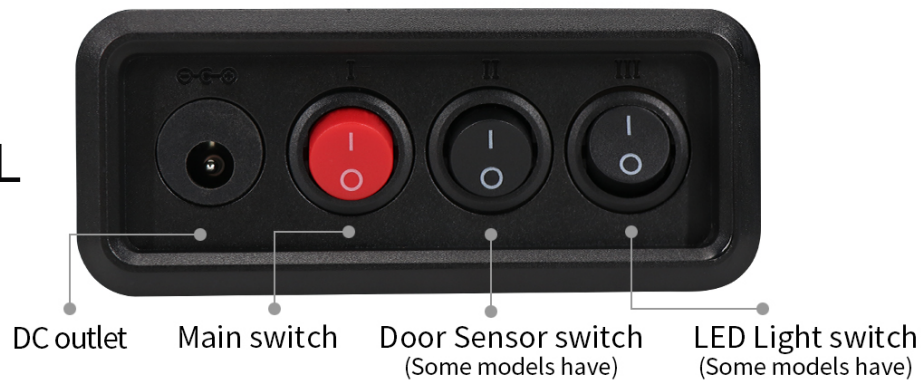
PRECAUTIONS FOR USE:

1. Please take or put the watch after the watch winder is stop(Turn off the power or open the cover when it self-stopped). Do not take the watch while turning. Avoid motor damaged and cause the watch damaged.
2. Battery and adapter can not be used at the same time. Please choose a power supply method. It is not recommended to use Nanfu battery.
3. It should be powered by the original power adapter. Do not use other instead to avoid burning the circuit due to different voltage and current.
4. The watch winder consumes low power during normal operation and can be used continuously. However, continuing use for about 30 days, it is recommended to turn off the main power supply and let the winder rest for 12 hours.
5. A single turntable gear can load capacity up to 450g, Single turntable load must not exceed motor load bearing.
6. Watch winder works proper temperature -15degree.

MODE 5 MANUAL

(The control system is picture 1,use this manual)

STRUCTURAL DIAGRAM:



5 MODE:

Picture 1



Rotation Mode

Mode 1, Operation On/Off.

○ Mode 2, Turn clockwise. Rotate for 2 minutes and rest for 6 minutes and then repeat.

○ Mode 3, Turn counter clockwise. Rotate for 2 minutes and rest for 6 minutes and then repeat.

○ Mode 4, Turn both clockwise and counter clockwise. Rotate for 2 minutes in one direction and then rest for 6 minutes. Rotate for 2 minutes in the opposite direction and then rest for 6 minutes. Repeats above cycle.

○ Mode 5, Turn both clockwise and counter clockwise. Rotate for 5 minutes in one direction and then rotates in opposite direction in same 5 minutes. Repeats continuously for 3 hours and then rests for 9 hours. After 9th hour, it will begin rotating above cycle.

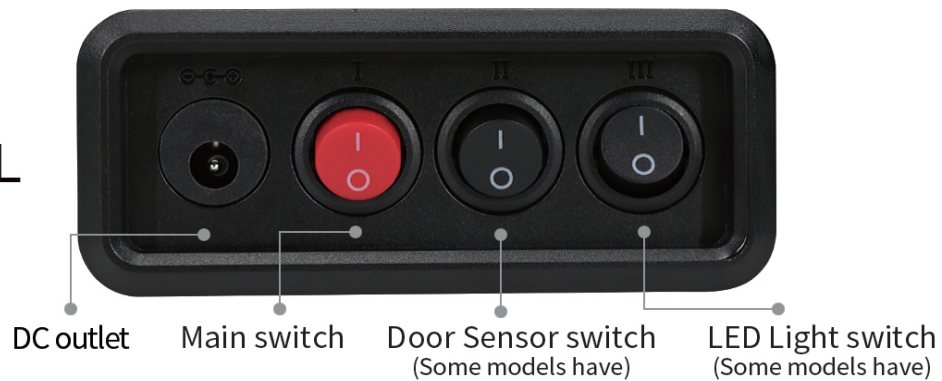
“Door Sensor” Some watch winder have this function. When the function turn on , open the cover motor will stop working(then you can change you watch). when you close the cover the motor continue to work.

“LED Light” Some watch winder have LED light.

TPD 9 MANUAL

(The control system is picture 1 、 2 or 3 use this manual)

STRUCTURAL DIAGRAM:

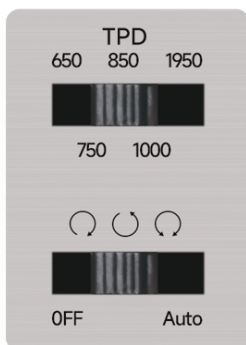


TPD 9 MANUAL:

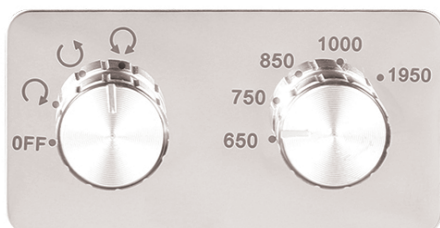
- *TPD: Work time is 12 hours ,in work time rotors will turn around and stop Reach the set number of turns, then will stop and rest for 12 hours.
- *650 TPD: rotates 650 times a day, direction of rotation can be selected by the user.
- *750 TPD: rotates 750 times a day, direction of rotation can be selected by the user.
- *850 TPD: rotates 850 times a day, direction of rotation can be selected by the user.
- *1000 TPD: rotates 1000 times a day, direction of rotation can be selected by the user.
- *1950 TPD: rotates 1950 times a day, direction of rotation can be selected by the user.
- *Auto: Turn both clockwise and counter clockwise. Rotate for 2 minutes in one direction and then rest for 6 minutes. Rotate for 2 minutes in the opposite direction and then rest for 6 minutes. Repeats above cycle (Not resting for 12 hours).

ORIENTATION:

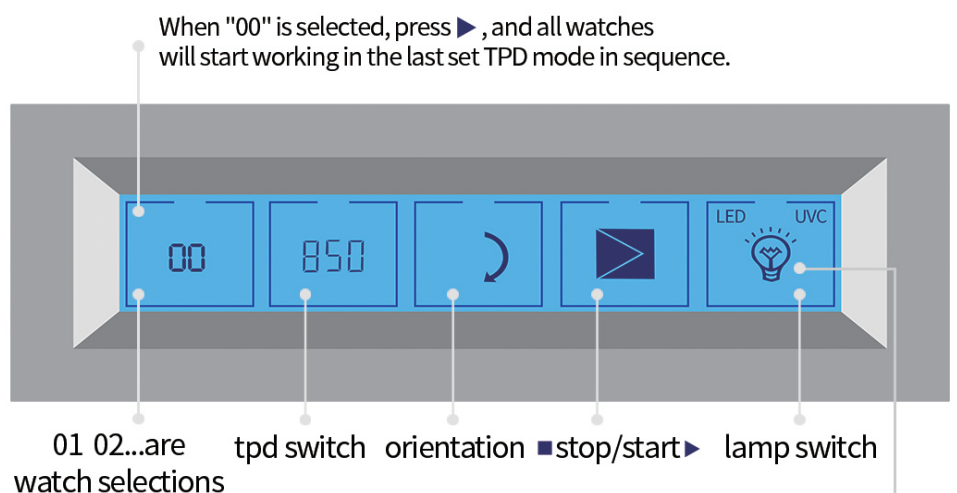
⌚:Clockwise ↺:counter-clockwise ⌚↺:Alternating



Picture 3



Picture 1



Picture 2

Note: Some models include the following features:

- The "LED" light indicates that the lighting is turned on
- The "UVC" light indicates that the sterilization lamp is turned on (it will automatically turn off after 10 minutes)
- The '💡' light indicates that the rainbow lights are on

FINGERPRINT LOCK MANUAL

Some models have fingerprint lock, if fingerprint lock is picture 1, use this manual

CTRL

Experience mode

Any fingerprint can be unlocked. The product is the experience mode.

Unlock verification mode

Verification success: detects the fingerprint and immediately automatically verifies the lock, and closes the lock after the blue light is on for 2 seconds. Validation failure: 3 flash rainbow lights.

Fingerprint entry mode

Number of fingerprint storage in the system: 2 administrators (the first two input) + 18 users.

First fingerprint input: long finger press the fingerprint sensing area for 7 seconds (during a verification mode, do not release the finger, 5 seconds after verification), the blue light can be released after 3 times, immediately pink light flash once, then enter the fingerprint input state. The fingerprint finger to press the fingerprint sensor area, each time, then prompt the first fingerprint input and exit the successful fingerprint input mode. The first digit automatically becomes the administrator fingerprint.

The second fingerprint entry: the finger controls the fingerprint sensing area for 7 seconds (during which the verification mode will be carried out first. Do not loosen the finger if the authentication passes or fails. 5 seconds after the verification. The slow blue light is 3 times). When the blue light flashes slowly, you can release your fingers. After the blue light flashes slowly for 3 times, the pink light flashes once immediately. You need to press the sensing area with the first fingerprint to confirm. If the pink light flashes, it indicates that the verification is successful and enters the state of instruction entry: press the fingerprint sensing area with the finger that wants to become the second administrator fingerprint. Each effective press is accompanied by a blue light flashing once, and the invalid press is accompanied by a red light flashing once. Press continuously, and the system collects enough 6 effective presses. If the blue light flashes slowly twice, it will prompt that the second fingerprint has been successfully entered and exit the fingerprint entry mode. The second entered fingerprint automatically becomes the administrator's fingerprint.

User fingerprint entry: long press the fingerprint sensing area with your finger for 7 seconds (during this period, the verification mode will be carried out first. Do not loosen your finger if the authentication passes or fails. After 5 seconds of verification, the blue light will flash slowly for 3 times). When the basket light flashes slowly, you can release your fingers. The blue light flashes slowly for 3 times. Press the sensing area with the administrator's fingerprint for confirmation. If the pink light flashes, it means that the verification is successful and the command and control entry state is entered. Press the fingerprint sensing area with the finger of the user. Each effective press is accompanied by a blue light flashing once, and the invalid press is accompanied by a red light flashing once. Press continuously, and the system collects enough effective pressure for 6 times, Then the blue light flashes slowly for 2 times to prompt the user that the fingerprint entry is successful and exit the fingerprint entry mode.

Be careful:

- 1.If the administrator is verified successfully, the pink light will flash, and if it fails, the red light will flash. If the administrator verifies that the number is lost for 3 consecutive times, the red light will flash for 3 times, prompting him to exit the fingerprint entry mode.
- 2.In the fingerprint entry state, three consecutive invalid fingerprint presses, then the red light flashes three times to prompt that the fingerprint entry fails and exit the fingerprint entry mode.
3. In the fingerprint entry state, if no fingerprint entry is detected within 5 seconds, the red light flashes 4 times to prompt to exit the fingerprint entry mode.
4. It is recommended that two administrators use two different fingers for their fingerprints.
- 5.it is suggested that only one finger should be used for fingerprint input every time.
- 6.All modes exit, which refers to returning to the sleep standby state.



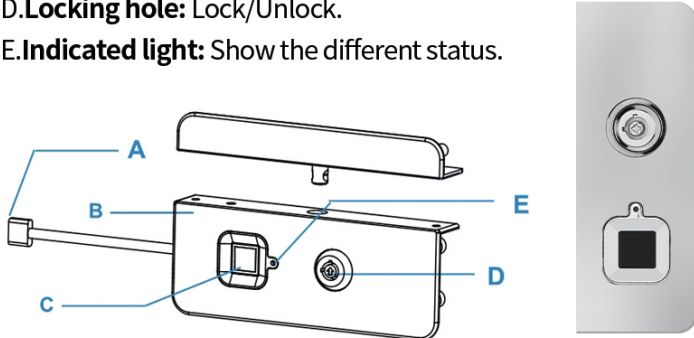
Picture 1

FINGERPRINT LOCK MANUAL

Some models have fingerprint lock, if fingerprint lock is picture 1, use this manual

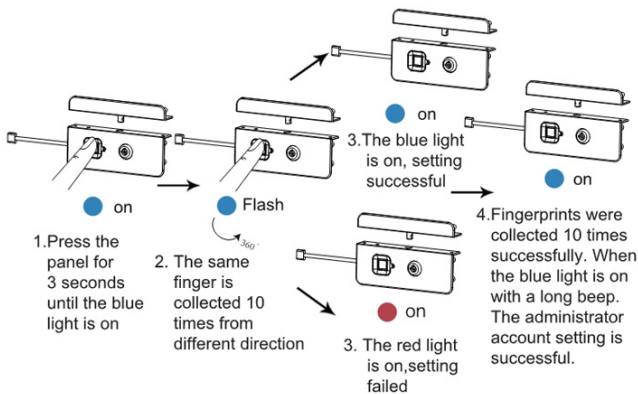
I. Part names

- A. **USB type-c port:** Charging the fingerprint lock.
B. **Lock Body:** Zinc alloy + PC.
C. **Fingerprint panel:** Put your finger in here to identify.
D. **Locking hole:** Lock/Unlock.
E. **Indicated light:** Show the different status.



Picture 1

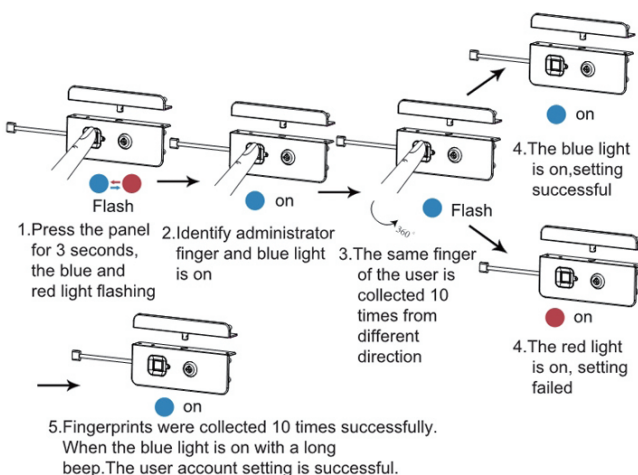
II. Set administrator account for the first time



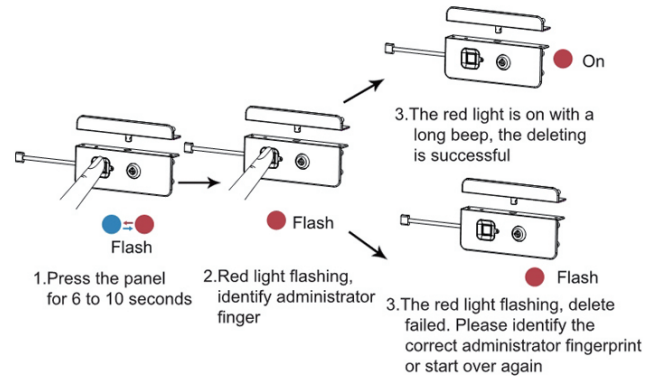
Remarks

- When you get the lock, please charge it if there is no electricity.
- The default first fingerprint is the administrator's account.
- The second to the tenth fingerprint is the user account, which needs the administrator's confirmation.
- When collecting fingerprints, one user collects as many sets of fingerprints as possible.

III. Second to tenth user fingerprint entry



IV. Delete



V. Unlock way



VI. Low power

When the voltage is equal or lower than 3.5V, press the fingerprint panel and the green indicator light flashing, please charge it in time.

VII. Restore factory settings

Insert the bound electronic key into the charging port of the lock body, and press any finger on the fingerprint pad. The green light will flash for 2 seconds, and all entered fingerprints will be deleted and restored to factory settings. At this time, any finger can unlock the lock.



VIII. Specification

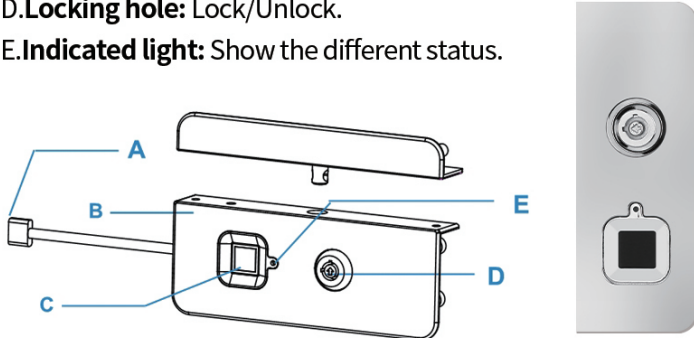
Model Name	FL-B1-A
USB type-C input	5V/200mA
Battery	260mAh 3.7V
Ratio of rejecting real	<1%
Ratio of recognizing false	<0.002%
Groups of fingerprint	10
Dimension	82*33*18.5mm
Net Weight	42g

FINGERPRINT LOCK MANUAL

Some models have fingerprint lock, if fingerprint lock is picture 1, use this manual

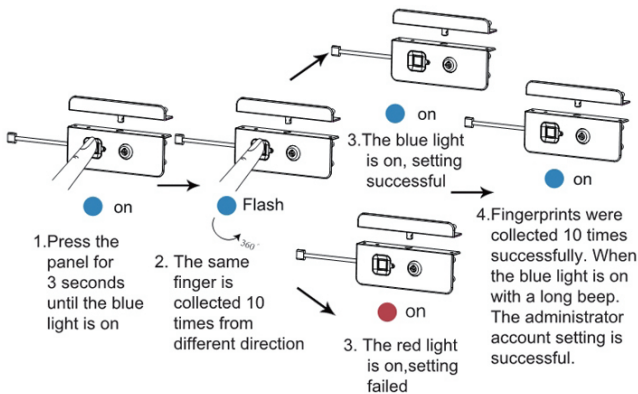
I. Part names

- A. **USB type-c port:** Charging the fingerprint lock.
B. **Lock Body:** Zinc alloy + PC.
C. **Fingerprint panel:** Put your finger in here to identify.
D. **Locking hole:** Lock/Unlock.
E. **Indicated light:** Show the different status.



Picture 1

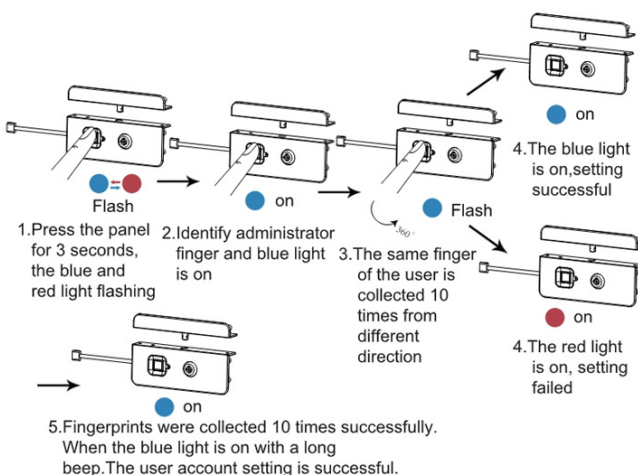
II. Set administrator account for the first time



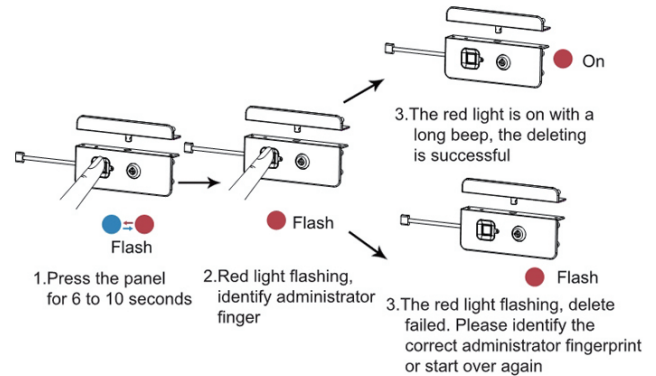
Remarks

- When you get the lock, please charge it if there is no electricity.
- The default first fingerprint is the administrator's account.
- The second to the tenth fingerprint is the user account, which needs the administrator's confirmation.
- When collecting fingerprints, one user collects as many sets of fingerprints as possible.

III. Second to tenth user fingerprint entry



IV. Delete



V. Unlock way



VI. Low power

When the voltage is equal or lower than 3.5V, press the fingerprint panel and the green indicator light flashing, please charge it in time.

VII. Restore factory settings

Insert the bound electronic key into the charging port of the lock body, and press any finger on the fingerprint pad. The green light will flash for 2 seconds, and all entered fingerprints will be deleted and restored to factory settings. At this time, any finger can unlock the lock.



VIII. Specification

Model Name	FL-B1-A
USB type-C input	5V/200mA
Battery	260mAh 3.7V
Ratio of rejecting real	<1%
Ratio of recognizing false	<0.002%
Groups of fingerprint	10
Dimension	82*33*18.5mm
Net Weight	42g

FINGERPRINT LOCK MANUAL

Delete mode

Press and hold the fingerprint head with any finger for 17 seconds (during this period, the verification mode will be carried out once. Do not loosen the finger if the authentication passes or fails. After 5 seconds of verification, the blue light will flash slowly for 3 times, the finger will continue to press, and the red light will flash slowly for 3 times after 10 seconds). Wait for the 17th second, the red light flashes and you can release your finger. After the red light flashes slowly for 3 times, press the administrator's fingerprint, and the pink light flashes successfully. After the administrator's fingerprint is successfully verified for 2 times, the blue light flashes quickly for 3 times, indicating that the memory fingerprint has been completely cleared, fingerprint restored to original settings.

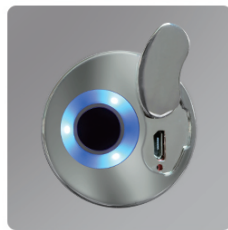
1. If the administrator fails to verify, the red light flashes once, and the continuous verification fails for more than 3 times, the red light flashes 4 times, indicating that the deletion fails and automatically exits the deletion mode.
2. If no fingerprint pressing is detected for more than 5 seconds, the red light flashes for 4 times to prompt deletion failure and automatically exit the deletion mode.
3. All modes exit, which refers to returning to the sleep standby state.
4. In case of after-sales demand, users must use the administrator's fingerprint to delete all fingerprints in the system.

Full fingerprint capacity

After 20 fingerprints are registered in the system, the system will terminate the fingerprint entry process after entering the fingerprint registration again, and the red light will flash slowly for 4 times to indicate that the number of fingerprints is full and exit.

Charging mode

You can use the standard mobile phone power supply and Android cable to charge this product. When the system enters the charging mode, it will prompt to turn on the blue breathing light, and the blue light will stay on after the battery is full. Fingerprint unlocking can be operated normally during charging.



Insufficient power

During the verification of unlocking operation, if the built-in battery power is insufficient, the blue light flashes for 2 times, followed by the red light flashes for 4 times, indicating that the power is insufficient and high, and charging operation is carried out in time.

Restore factory settings

First, check whether the fingerprint lock is powered on. When it is powered on, insert the unlocker into the USB port of the fingerprint lock and press and hold the button until the purple light is on and released. When the fingerprint lock light turns blue, the factory setting is restored. At this time, you can open the lock with any fingerprint.

