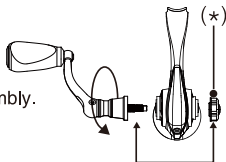


Changing handle position from left to right

- Screw in handle style.
 - ① Remove the handle screw cap.(*)
 - ② Turn the handle clockwise and detach the handle assembly.
 - ③ Reassemble in reverse order.
 - ④ Put on the handle screw cap.



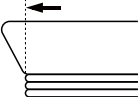
Winding line

- ① Attach the reel on rod.
- ② Tighten the drag.
- ③ Tie the line on the spool and make sure the line does not slip.
- ④ Turn the handle one time to begin winding the line. Then, turn the "line spool" vertical (see picture) and put pressure on the "line spool", continue winding under tension until the spool is full.



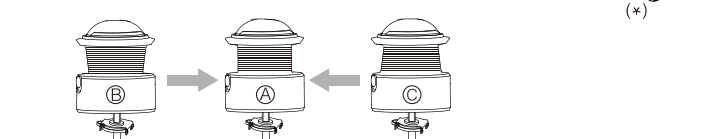
Suggested limit of line capacity

Our spools reduce backlash when you cast. To gain 100% performance, wind the line to "Arrowed line". Don't wind too much line on the spool.



How to adjust line shape on the spool

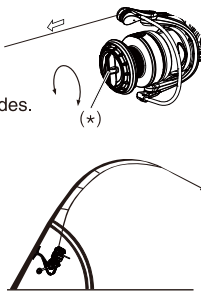
- A. Setting upon delivery
- B. To set to wind more to the back increase the number of washer(*) on the spool shaft
- C. To set to wind more to the front reduce the number of washer(*) on the spool shaft



Drag tension adjustment

Adjustment of drag tension allows the spool to rotate and prevent line breakage when a hooked fish pulls hard on the line.

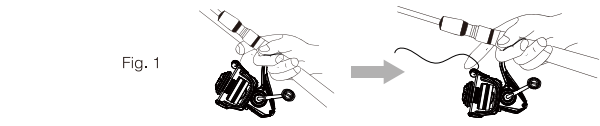
- ① Mount the reel on the rod and pass the line through the guides.
- ② Pull on the line, as indicated in the diagram, and adjust the tightness of the drag knob(*). Turning the drag knob clockwise will increase the tension, and reverse to reduce it.
- ③ As a general rule, adjust the drag tension so that line begins to feed off the spool just before the breaking point. Moreover, always tighten the drag knob when making a long cast, as the drag could slip and result in injury of hand or fingers on the line.



Casting

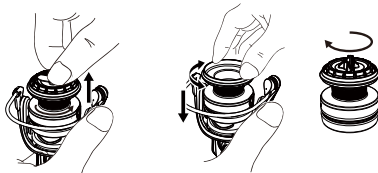
- ① Grab the line with your finger. Fig 1.
- ② Open the bail at the position which is shown on Fig 2.
- ③ Swing the rod and cast.

*Please tighten the drag enough when you cast. If the drag is too loose, there is a possibility of cutting your finger by the spinning spool.



Spool removal & attachment

- Removal
Simply turn the drag knob counterclockwise.
- Attachment
Slowly turn the spool while sliding it onto the spool shaft until the spool shaft has passed all the way through the spool, then fasten it by turning the drag knob clockwise.



Precautions Concerning Storage

After use in a saltwater environment and before storing your reel, remove residual salt and dry thoroughly according to the points noted under Basic Maintenance for Use in Saltwater Environments.

- ① Always remove the reel from the rod before storage. If the reel is rinsed off while mounted on the rod, seawater that has accumulated in the reel seat hood and the reel leg will often remain even after rinsing.
- ② Rinsing. Use a showerhead, etc., under low pressure to rinse with fresh water and wash away salt and dirt adhering to the exterior of the reel.
- * Avoid heated water as it may also wash away grease. For the same reason, the reel should not be immersed in water either.
- * Avoid high pressure wash as it will push salt and debris into the reel.
- ③ Drying. Avoiding direct sunlight, let dry in a shaded area after thoroughly draining off all water.
- * Exposure to direct sunlight or hot air from a dryer can cause condensation to occur on the interior of the frame.
- * Removing the Maintenance Port cap is recommended as an effective measure when draining off water and drying.
- ④ Oil & Grease Use. Oil and grease correctly as indicated at points illustrated below.

Oil injection

Perform lubrication carefully in a well-ventilated area as oil and grease particles may spatter or linger in the air.

To spray inside the Maintenance Port, use a flat-head screwdriver to remove the cap then insert 1-2 drops of oil.

We recommend you to spray oil once every 5 times you go fishing or when you have 1 month or more until your next fishing trip. Be sure reattach the Maintenance Port cap once spraying of oil is complete otherwise you may stain your clothing by spilt oil.

* Do not spray grease from oil injection too much.

Line roller oil injection

Use oil or grease spray. Put the nozzle inside the injection and press the button quickly.

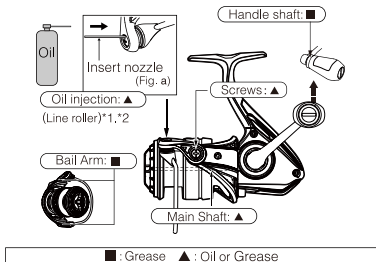
(Fig.a)

(There are some areas where we don't apply the oil and grease spray.)

* Attention: Take off the spool and cover the line roller when you spray. Oil or grease may spill from the line roller, wipe off the line roller after your spray. Spilt oil or grease may spread out of the line roller and stain your clothes.

Do not put grease inside of the Roller bearing or spray inside the rotor.

Points requiring Lubricant.



Precautions Concerning Storage

Always remove the reel from the rod before storage. Leaving your reel in an enclosed space (e.g. car trunk or storage, compartment on a boat) under extremely hot, humid conditions, may compromise its ability to resist the effects of corrosion. Dry the reel well and keep it in a well-ventilated location.

ALUMIX

Product manual

More after-sales policies: WWW.PISCIFUN.COM E-mail: CS@PISCIFUN.COM

Return & Warranty Policy

Dear Valued Customer,

Thank you for choosing our fishing reel products! To provide you with the best experience and protect your rights, we've outlined the following after-sales service policy. Please read and retain this policy for future reference.

Warranty Period

• Free Return/Exchange: Within 1 month (unused items or due to quality issues only).

• Free Warranty: Within 1 year.

• Paid Warranty: Available up to 3 years.

The warranty covers defects caused by manufacturing but excludes damage from improper use, accidents, or human error. Retain your purchase receipt (order screenshot, date, and platform details) as valid proof for service.

After-Sales Service Process

1. Contact Customer Service: Reach us through our official website, hotline, or online chat. Provide a screenshot of your purchase order and order number.

2. Diagnosis: Based on your description, we'll conduct an initial diagnosis. If needed, the product may need to be returned for detailed inspection.

3. Repair Confirmation: After diagnosis, we'll inform you of the repair plan and costs (if applicable).

4. Repair Implementation: Upon your approval, we'll complete the repair promptly and notify you for pickup or arrange for return shipping.

5. Service Tracking: Stay updated on the repair progress with our tracking service.

We are committed to providing professional, high-quality after-sales support and ensuring your satisfaction.

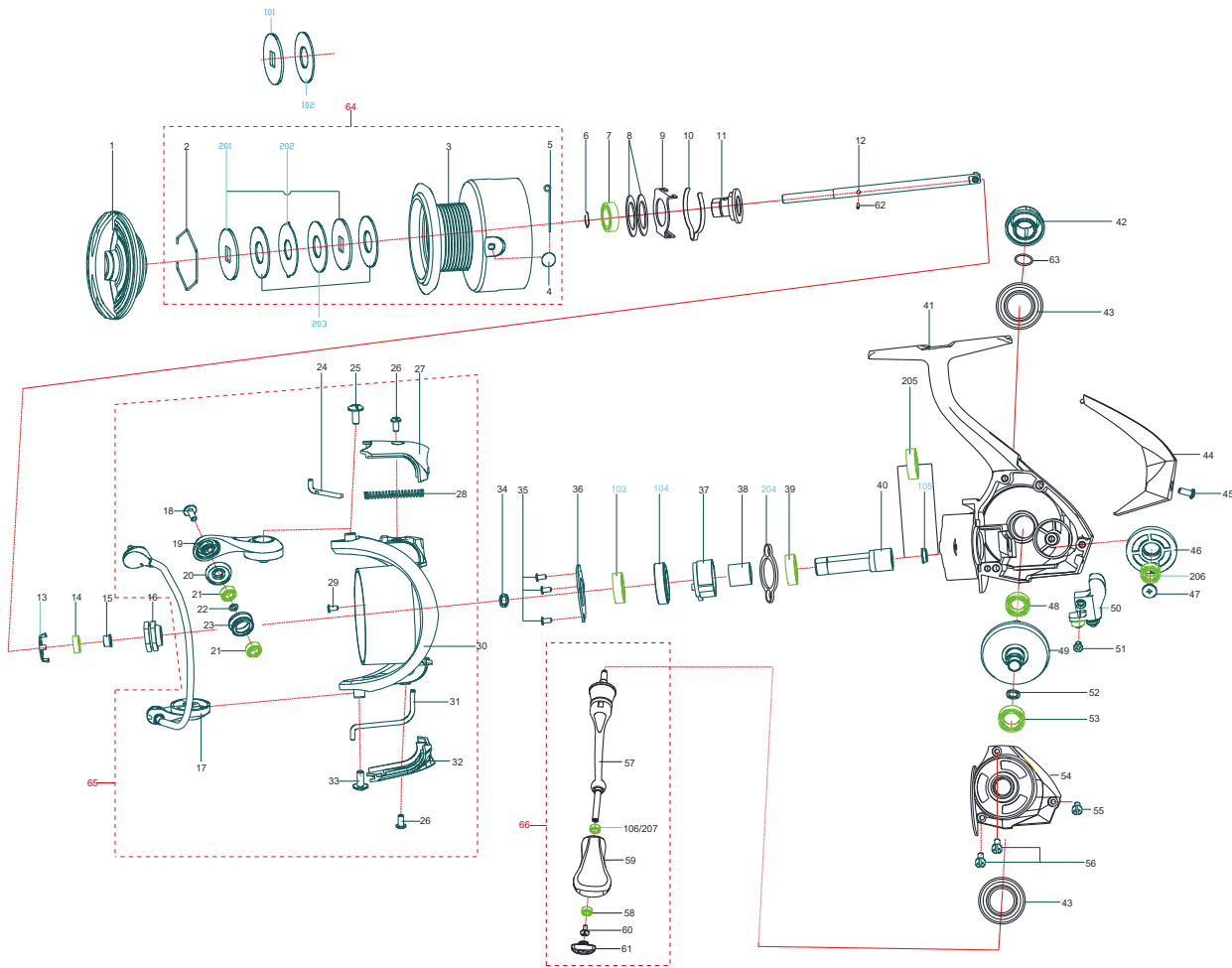
Order Cancellations: Orders can be canceled within 24 hours of placement. We will do our best to intercept shipments if possible.

Your satisfaction drives us to continuously improve. Thank you for choosing Piscifun.

ALUMIX 1000

- Color: Purple (PE)

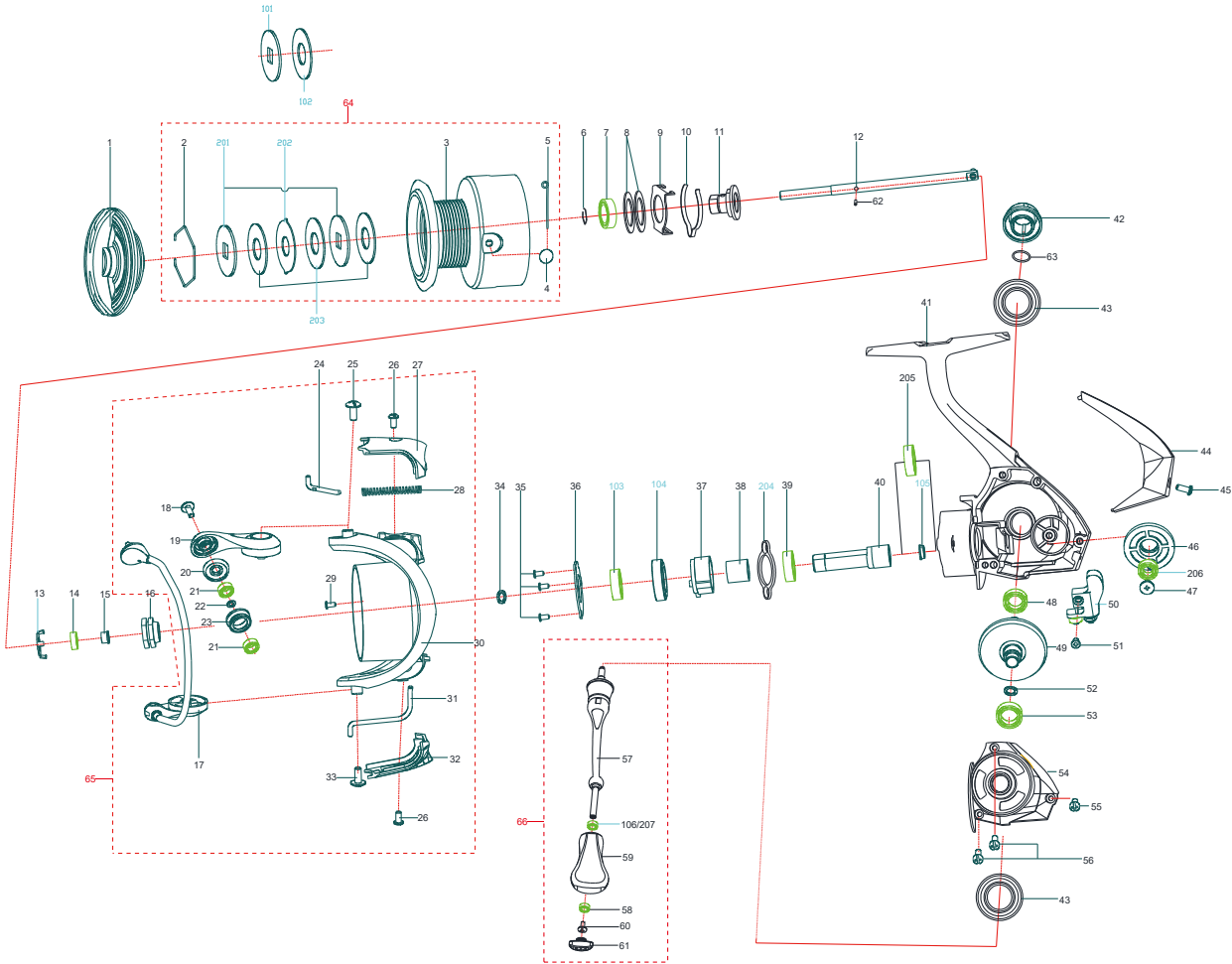
- Color: Black (BK)



No.	PartNumber	Name	No.	PartNumber	Name	No.	PartNumber	Name
1	CS1000	Drag knob assy (PE)	25	CS1028	Screw	50	CS1055	Slider assy
	CS1001	Drag knob assy (BK)	26	CS1029	Screw	51	CS1056	Screw
2	CS1002	Drag washer retainer	27	CS1030	Rotor cover-A	52	CS1057	Adjusting washer
	CS1003	Spool (PE)	28	CS1031	Bail spring	53	CS1058	Ball bearing
3	CS1004	Spool (BK)	29	CS1032	Screw	54	CS1059	Body cover (PE)
				CS1033	Rotor (PE)		CS1060	Body cover (PE)
4	CS1005	Line clip	30	CS1034	Rotor (BK)	55	CS1061	Screw
	CS1006	Line clip spring	31	CS1035	Kick level	56	CS1062	Screw
6	CS1007	Shaft retainer	32	CS1036	Rotor cover-B	57	CS1063	Handle assy (PE)
7	CS1008	Ball bearing	33	CS1028	Screw		CS1064	Handle assy (BK)
8	CS1009	Adjusting washer-A	34	CS1037	Adjusting washer-B	58	CS1065	Bushing
9	CS1010	Click leaf spring holder	35	CS1038	Screw	59	CS1066	Handle knob
10	CS1011	Click leaf spring	36	CS1039	Roller cover	60	CS1067	Screw
11	CS1012	Shaft drag adapter	37	CS1040	Roller	61	CS1068	Handle knob cap
12	CS1013	Main shaft	38	CS1041	Roller inner bushing	62	CS1069	Pin
13	CS1014	Ball bearing retainer	39	CS1042	Ball bearing	63	CS1070	O-ring
14	CS1015	Ball bearing	40	CS1043	Pinion gear		CS1071	Spool assy (PE)
15	CS1016	Bushing	41	CS1044	Body (PE)	64	CS1072	Spool assy (BK)
16	CS1017	Rotor nut		CS1045	Body (BK)		CS1073	Rotor assy (PE)
17	CS1018	Bail assy (PE)	42	CS1046	Handle cap (PE)	65	CS1074	Rotor assy (BK)
18	CS1019	Bail assy (BK)		CS1047	Handle cap (BK)		CS1075	Handle group (PE)
19	CS1020	Screw	43	CS1048	Decorating ring (PE)	66	CS1076	Handle group (BK)
	CS1021	Bail arm (PE)		CS1049	Decorating ring (BK)	101	CS1077	Key washer
	CS1022	Bail arm (BK)	44	CS1050	Body rear cover	102	CS1078	Drag washer
20	CS1023	Line roller washer (PE)	45	CS1038	Screw	103	CS1042	Ball bearing
21	CS1015	Ball bearing	46	CS1051	Oscillation gear	104	CS1079	Roller room
22	CS1025	Line roller washer	47	CS1052	Screw	105	CS1080	Pinion gear bushing-A
23	CS1026	Line roller	48	CS1053	Ball bearing	106	CS1065	Ball bearing
24	CS1027	Bail spring shaft	49	CS1054	Drive gear assy			

ALUMIX 2000

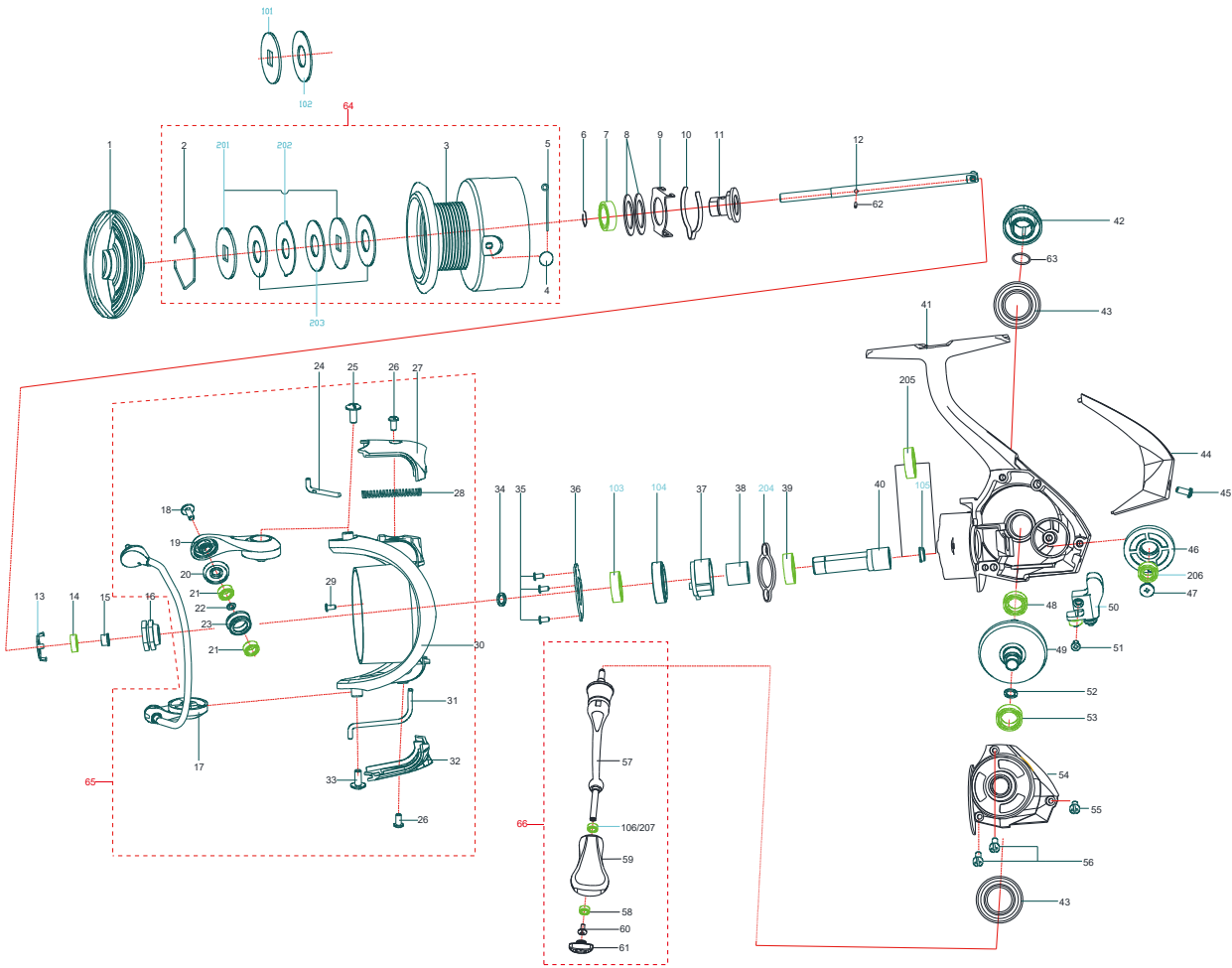
- Color: Purple (PE)
- Color: Black (BK)



No.	PartNumber	Name	No.	PartNumber	Name	No.	PartNumber	Name
1	CS1081	Drag knob assy (PE)	25	CS1098	Screw	50	CS1122	Slider assy
	CS1082	Drag knob assy (BK)	26	CS1099	Screw	51	CS1123	Screw
2	CS1002	Drag washer retainer	27	CS1100	Rotor cover-A	52	CS1057	Adjusting washer
3	CS1083	Spool (PE)	28	CS1101	Bail spring	53	CS1058	Ball bearing
	CS1084	Spool (BK)	29	CS1032	Screw	54	CS1124	Body cover (PE)
4	CS1005	Line clip	30	CS1102	Rotor (PE)	54	CS1125	Body cover (PE)
5	CS1085	Line clip spring		CS1103	Rotor (BK)	55	CS1061	Screw
6	CS1007	Shaft retainer	31	CS1104	Kick level	56	CS1062	Screw
7	CS1008	Ball bearing	32	CS1105	Rotor cover-B	57	CS1126	Handle assy (PE)
8	CS1009	Adjusting washer-A	33	CS1106	Screw		CS1127	Handle assy (BK)
9	CS1086	Click leaf spring holder	34	CS1107	Adjusting washer-B	58	CS1065	Bushing
10	CS1011	Click leaf spring	35	CS1108	Screw	59	CS1066	Handle knob
11	CS1012	Shaft drag adapter	36	CS1109	Roller cover	60	CS1128	Screw
12	CS1087	Main shaft	37	CS1110	Roller	61	CS1068	Handle knob cap
13	CS1014	Ball bearing retainer	38	CS1111	Roller inner bushing	62	CS1069	Pin
14	CS1088	Ball bearing	39	CS1112	Ball bearing	63	CS1070	O-ring
15	CS1089	Bushing	40	CS1113	Pinion gear	64	CS1129	Spool assy (PE)
16	CS1090	Rotor nut	41	CS1114	Body (PE)		CS1130	Spool assy (BK)
17	CS1091	Bail assy (PE)		CS1115	Body (BK)	65	CS1131	Rotor assy (PE)
18	CS1092	Bail assy (BK)	42	CS1046	Handle cap (PE)		CS1132	Rotor assy (BK)
19	CS1093	Screw		CS1116	Handle cap (BK)	66	CS1133	Handle group (PE)
19	CS1094	Bail arm (PE)	43	CS1117	Decorating ring (PE)		CS1134	Handle group (BK)
	CS1095	Bail arm (BK)		CS1118	Decorating ring (BK)	201	CS1135	Key washer
20	CS1023	Line roller washer (PE)	44	CS1119	Body rear cover	202	CS1136	Eared washer
	CS1024	Line roller washer (BK)	45	CS1038	Screw	203	CS1137	Drag washer
21	CS1015	Ball bearing	46	CS1120	Oscillation gear	204	CS1138	Roller cover-B
22	CS1025	Line roller washer	47	CS1052	Screw	205	CS1139	Ball bearing
23	CS1096	Line roller	48	CS1053	Ball bearing	206	CS1140	Ball bearing
24	CS1097	Bail spring shaft	49	CS1121	Drive gear assy	207	CS1065	Bushing

ALUMIX 3000

- Color: Purple (PE)



No.	PartNumber	Name	No.	PartNumber	Name	No.	PartNumber	Name
1	CS1081	Drag knob assy (PE)	26	CS1099	Screw	51	CS1123	Screw
2	CS1002	Drag washer retainer	27	CS1143	Rotor cover-A	52	CS1057	Adjusting washer
3	CS1141	Spool (PE)	28	CS1101	Bail spring	53	CS1058	Ball bearing
4	CS1005	Line clip	29	CS1032	Screw	54	CS1149	Body cover (PE)
5	CS1085	Line clip spring	30	CS1144	Rotor (PE)	55	CS1061	Screw
6	CS1007	Shaft retainer	31	CS1145	Kick level	56	CS1062	Screw
7	CS1008	Ball bearing	32	CS1146	Rotor cover-B	57	CS1126	Handle assy (PE)
8	CS1009	Adjusting washer-A	33	CS1106	Screw	58	CS1065	Bushing
9	CS1086	Click leaf spring holder	34	CS1107	Adjusting washer-B	59	CS1066	Handle knob
10	CS1011	Click leaf spring	35	CS1108	Screw	60	CS1128	Screw
11	CS1012	Shaft drag adapter	36	CS1109	Roller cover	61	CS1068	Handle knob cap
12	CS1087	Main shaft	37	CS1110	Roller	62	CS1069	Pin
13	CS1014	Ball bearing retainer	38	CS1111	Roller inner bushing	63	CS1070	O-ring
14	CS1088	Ball bearing	39	CS1112	Ball bearing	64	CS1150	Spool assy (PE)
15	CS1089	Bushing	40	CS1113	Pinion gear	65	CS1151	Rotor assy (PE)
16	CS1090	Rotor nut	41	CS1147	Body (PE)	66	CS1133	Handle group (PE)
17	CS1142	Bail assy (PE)	42	CS1046	Handle cap (PE)	201	CS1135	Key washer
18	CS1093	Screw	43	CS1117	Decorating ring (PE)	202	CS1136	Eared washer
19	CS1094	Bail arm (PE)	44	CS1148	Body rear cover	203	CS1137	Drag washer
20	CS1023	Line roller washer (PE)	45	CS1038	Screw	204	CS1138	Roller cover-B
21	CS1015	Ball bearing	46	CS1120	Oscillation gear	205	CS1139	Ball bearing
22	CS1025	Line roller washer	47	CS1052	Screw	206	CS1140	Ball bearing
23	CS1096	Line roller	48	CS1053	Ball bearing	207	CS1065	Bushing
24	CS1097	Bail spring shaft	49	CS1121	Drive gear assy			
25	CS1098	Screw	50	CS1122	Slider assy			