

# User Manual

\*Please read the manual carefully before use and we recommend keeping this manual for future reference.

## COMPATIBILITY CHECK

### Compatible Android versions:

1. Must support 5GHz Wi-Fi, have an active data plan enabled, and have Android Auto activated in your car.
2. Equipped with an Android phone compatible with wireless Android Auto:
  - A. All phones with Android 11.0;
  - B. Google and Samsung phones equipped with Android 10.0;
  - C. Samsung Galaxy S8, Galaxy S8+, and Note 8 phones equipped with Android 9.0.
3. [IMPORTANT] Only for cars with wired Android Auto.

### How to find out if a car has Android Auto?

Method 1: Plug your Android phone into the car's main USB port. If the car has Android Auto, the app will pop up on the screen, asking for your permission on the phone.

Method 2: If there is an Android Auto icon in the car audio menu, it means that your car has a built-in Android Auto system.



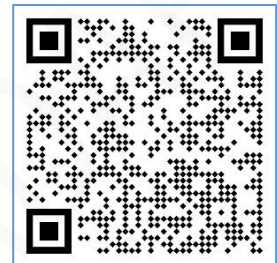
or



Method 3: Contact your car dealer for help.

Check out this website for supported car models:

<https://www.android.com/auto/compatibility>



Scan the code to  
check the compatibility

# HOW TO USE

## Setup Step:

1. Start the car and wait for the car head unit system to be loaded.
2. Connect the wireless Android Auto dongle to your vehicle's USB or USB C port. Note if your car has several ports, please be sure to plug the dongle into the port that is for wired Android Auto.
3. Turn on your Phone's WiFi, then the adapter "smart Dongle-xxxx" will appear in the list. Please do not connect to it or to any other WiFi list at this time, just keep Wi-Fi on and not be occupied.
4. Turn on the Bluetooth, search for the adapter "smart Dongle-xxxx", then click it to pair. After a few seconds, the phone will prompt "Use Android Auto", click the prompt and wait for 5-15 seconds to connect successfully.
5. After the first pairing, the wireless Android Auto dongle will automatically reconnect to your Phone when you use it again. In some cars, you may need to choose the option of "Start automatically" in the Android Auto settings to activate this function.

## Notes

1. If this is your first time to use the Android Auto function, please use the USB C data cable to plug into your phone and plug into the USB port of the car and activate Android Auto via cable.
2. The dongle can be paired with multiple iPhones, but they cannot be connected at the same time. Before pairing with your new iPhone, disconnect the WiFi and Bluetooth of the currently connected phone.
2. By default, the system will connect back to the last used iPhone. If the iPhone you want to use this time is not the iPhone you used last time, you need to set up the connection manually.

## ADDITIONAL EXPLANATION

### Working Principle

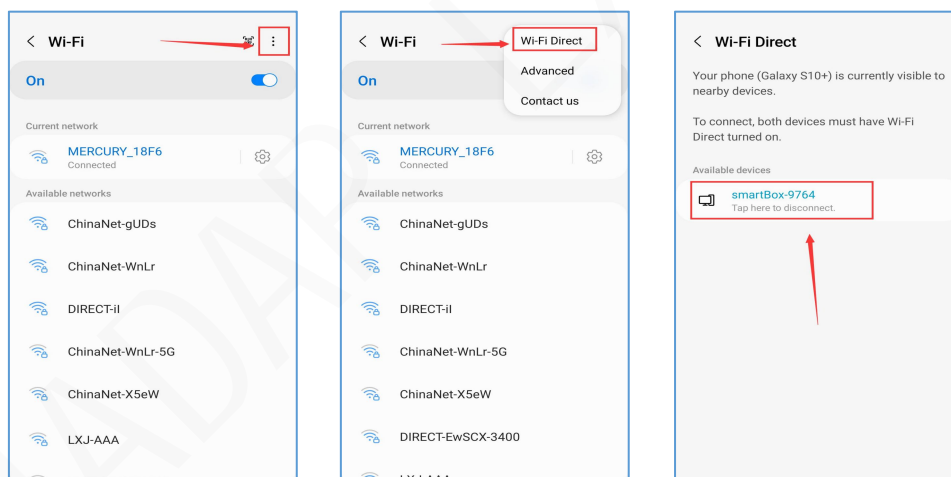
- Wireless Android Auto Adapter uses Bluetooth to set up the connection between the phone and the vehicle and then it switches to using WiFi for the actual functionality.
- After the Bluetooth pairing is successful, the phone WiFi will automatically connect to the dongle's WiFi, and then disconnect the Bluetooth connection by default.

### Based on the working principle of the dongle, please pay attention to the following:

1. When enjoying the wireless Android Auto function, the phone's WiFi will be occupied by the dongle, other WiFi cannot be used during this period. If there is a conflict between other WiFi and the dongle's WiFi, you may need to manually disconnect the connection of other WiFi to keep the wireless Android Autouse.

2. The auto-connection function of the dongle requires you to keep the WiFi and Bluetooth of the mobile phone available. In addition, please set the WiFi network of the dongle to "Wi-Fi Direct":

Settings > WLAN > Click the "i" symbol on the far right of "Smart Dongle-\*\*\*\*" > turn on "Wi-Fi Direct".



3. Since the dongle will disconnect the Bluetooth connection after pairing, your phone's Bluetooth may automatically connect to other devices, which may cause Android Auto mic input or sound playing to be unavailable. You may need to manually disconnect your phone from the other Bluetooth or switch off the Bluetooth directly to fix it. (Bluetooth plays a pairing role in the work of the dongle. When the pairing is completed, it only needs wifi to keep working, so it doesn't matter to turn off Bluetooth. But when you use it next time, you still need to turn on Bluetooth, so that the dongle can be automatically paired and connected.)

## PACKAGE LIST

- 1 x Wireless Android Auto Adapter
- 1 x USB C to USB adapter
- 1 x User Manual

## SERVICE

Warranty (in the case of non-artificial damage)

1. Lifetime technical support;
2. 100% money-back guarantee;
3. Free replacement for failed products.

\*No need to return and don't worry miss the Amazon return window, please contact us directly.

Contact Us on Amazon:

- A. Go to "Your orders" on your Amazon account;
- B. Find the corresponding order;
- C. Select "Problem with order" and choose the topic;
- D. Select Contact seller.

**\*If there is any issue while using the adapter or any dissatisfaction, we sincerely hope to have an opportunity to make it right.**

# FQA

## **1. What is the password to connect to WiFi?**

What we need to connect is Bluetooth, not WiFi. No password is required for connecting to Bluetooth. Make sure your WiFi is turned on and unoccupied when pairing.

## **2.The light on the dongle stays on when the car is turned off.**

Because the car will not cut off all the power immediately when the engine is turned off, the light of the dongle will not go out immediately, but it will take a while, about 5 minutes.

Rest assured, it consumes so little power that it won't drain your car battery.

## **3.Can't find your dongle's Bluetooth or WiFi?**

Please make sure the Dongle is powered on and the blue light is on. If it is convenient, you can use another mobile phone to test. If only a specific phone cannot find the dongle's Bluetooth or WiFi, try resetting the network and bluetooth settings for that phone, then restart the phone once; if the same problem occurs on other phones, the unit may be defective.

In this case, please let us know and we will refund you or send you a replacement.

## **4.Audio input or output issues: Calls rejected or diverted to voicemail/No sound playing/Microphone not working/Music playback interrupted or paused/Voice not functioning properly...**

1). Please check your phone's Bluetooth to see if it is connected to another device. If so, ignore other automatically connected Bluetooth devices or simply turn off Bluetooth.

2). Clear the programs running in the background of the phone when using the dongle.

\* Note: Bluetooth plays a pairing role in the work of the dongle. After the pairing is complete, only wifi is needed to continue working, so it doesn't matter to turn off the bluetooth. But the next time you use it, you still need to turn on Bluetooth to let the dongle pair and connect automatically.

## **5.Constantly disconnect?**

The dongle relies on the WiFi connection to the phone to work, disconnection is usually caused by wifi interference. Do you have any other wifi devices in your car, like a wifi enabled car camera? If so, you may need to ignore other wifi networks while using the dongle. You can also improve this issue by resetting your mobile Wi-Fi network. Also, updating the dongle's firmware is worth a try.

## **6.When the steering wheel buttons change songs, there is a delay?**

The wireless Android Auto system stipulates that there will be a data delay of 1-2 seconds for media audio to prevent packet loss of instant playback data and cause unstable sound quality. Therefore, it is normal for the sound of media audio to have a delay of 1-2 seconds.

## **7.Can the adapter be paired with multiple phones?**

The dongle can be paired with multiple phones, but only one device can be connected at a time. If you want to pair it with a new phone, please cancel the current connection first.

Please note that by default, the dongle's system will only automatically connect back to the last connected phone used by the Bluetooth function.

### **8. Why the adapter doesn't work after a while?**

Option 1:

You may need some updates to get it back on track.

- 1) Open Phone Settings > System > Advanced > System, check the Android version and install any available updates.
- 2) Open the Google Play Store to check for Android Auto app updates.
- 3) You should update other core system apps such as Google and Google Play Services if there is an update. Doing this can fix things like Android Auto's voice commands not working.
- 4) Finally, after all updates are done, open the Android Auto app on your phone. You may need to accept the User Agreement Update before you can use it. If an app is waiting for your approval, this is one of the reasons why Android Auto stops working after a major update.

Option 2:

If the Android Auto app is up to date, it still won't work.

- 1) First turn off the Bluetooth of the mobile phone,
- 2) Then open the phone's application management search android auto and clear the application cache,
- 3) Finally restart the adapter and reconnect to Bluetooth.

### **9. Car screen goes black after pairing?**

- 1) When pairing for the first time, you need to keep the wifi turned on (you don't need to manually connect to the dongle's wifi at this time), and then perform Bluetooth pairing. After the Bluetooth pairing is successful, the wifi will automatically connect to the dongle.

You can observe whether your wifi automatically switches to the dongle connection state when this page appears.

If not, unplug the dongle:

- A. Ignore "smartDongle-\*\*\*\*" in the Bluetooth list;
  - B. Restart the phone once;
  - C. Insert the dongle and fix it again.
- 2) If it still doesn't work, please try to upgrade the firmware.

### **10. Can't reconnect automatically?**

- 1). On some cars, we need to select "automatic connection" in Dongle settings, so as to use the dongle's automatic connection function.
- 2). Check the phone settings:
  - A. Settings>>WLAN>>Ask whether to join the network: select "Notification";
  - B. Settings>>WLAN>>Automatically join hotspots>>Select "Automatic" (or no need to change);
  - C. Settings>>WLAN>>Click the "i" symbol on the far right of "smartDongle-\*\*\*\*">>Open "Auto Join".
- 3) Other situations:
  - A. Please make sure that the Bluetooth and WiFi functions of the mobile phone are turned on and the Bluetooth is not occupied;
  - B. Clear the pairing record, restart the phone, and pair the dongle again.
- 4) Try to upgrade the firmware.

### **11. When the mobile phone plays a video, the audio and video are out of sync?**

Even with the original car wireless android auto, there is audio lag when watching videos. Because video transcoding is more complex than normal audio file transcoding and takes longer to process. This is a normal problem with wireless android auto, not an adapter problem.

## 12. Audio delay or sound quality issues (excluding audio delay during video playback)? "Modify "Audio Streaming Mode":

1) Enter the dongle setting interface (how to enter the dongle setting interface refer to "Firmware Update" in this manual);

2) Find "Audio Streaming Mode" - there are 4 modes to choose from:

Default - a fixed setting suitable for most car models;

Mode 1--Fixed settings for some models;

Mode 2--adaptive setting based on vehicle parameters;

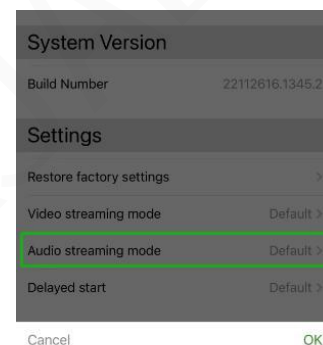
Mode 3 -- Unmodified car audio output settings;

Generally, we recommend using the default mode and mode 2, you can also try other modes to get the best results.

3) Please restart the phone before using the dongle again.

4) If this method does not work, please restore the "Audio Streaming Mode" to "Default" and try to upgrade the dongle.

Note: No changes are required for Streaming Mode.



## 13. When pairing, android auto does not start or the car prompts that the device is not compatible/cannot recognize the USB..

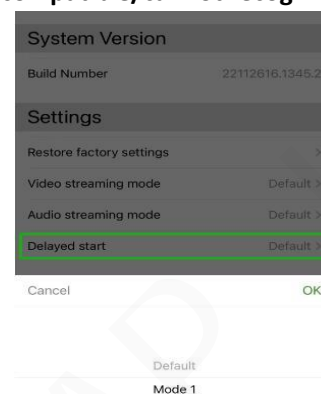
Modify the "Delayed Start" mode:

1) Enter the dongle setting interface (how to enter the dongle setting interface refer to "Firmware Update" in this manual);

2) Find "Delay Start" - change the mode from "Default" to "Mode 1";

3) Please restart the phone before using the dongle again.

4) If this method does not work, please restore the "Delayed Startup" mode to "Default", and then try to upgrade the dongle.



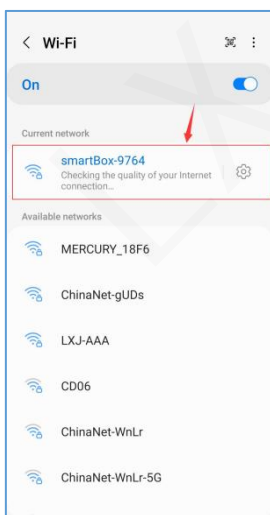
# Firmware Update

## ONLINE UPDATE

### Premise

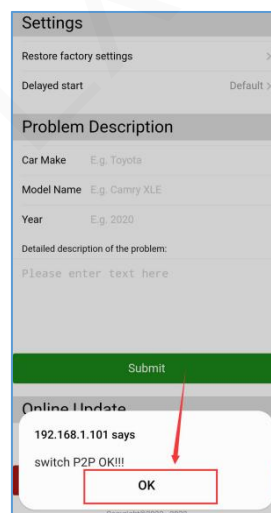
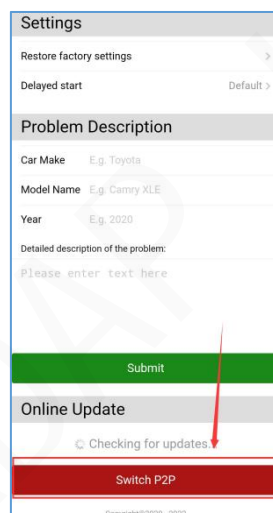
1. If the dongle works properly, it means the current version is suitable for your car. It is not recommended to update the firmware in this case to avoid any problems.
2. Only try this solution when the problem you encountered cannot be resolved by the solutions in the "FQA" list.
3. If problems occur after the upgrade, please "Restore factory settings".

**Step 1:** Power on the adapter, it is recommended to use the charging port only.  
(When upgrading, do not connect directly to the USB port on the car)

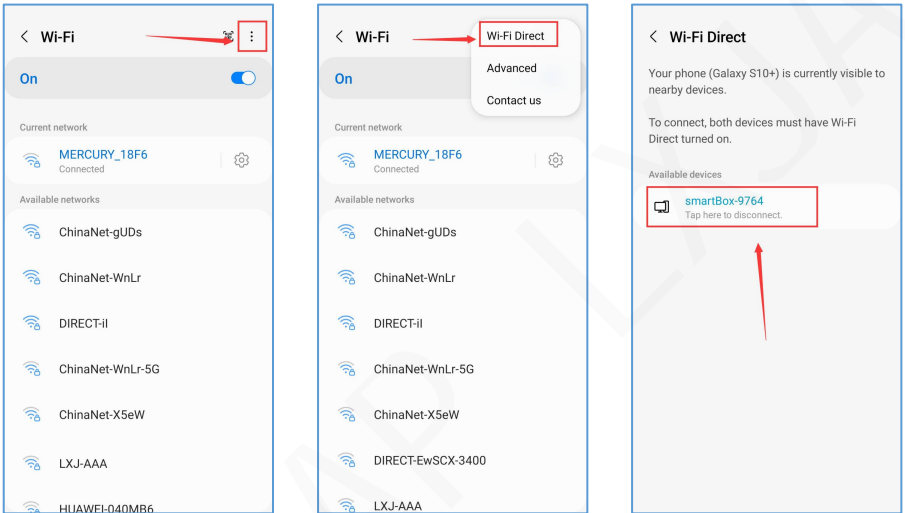


**Step 2:** Connect to the WiFi of the dongle, and the password is "88888888".

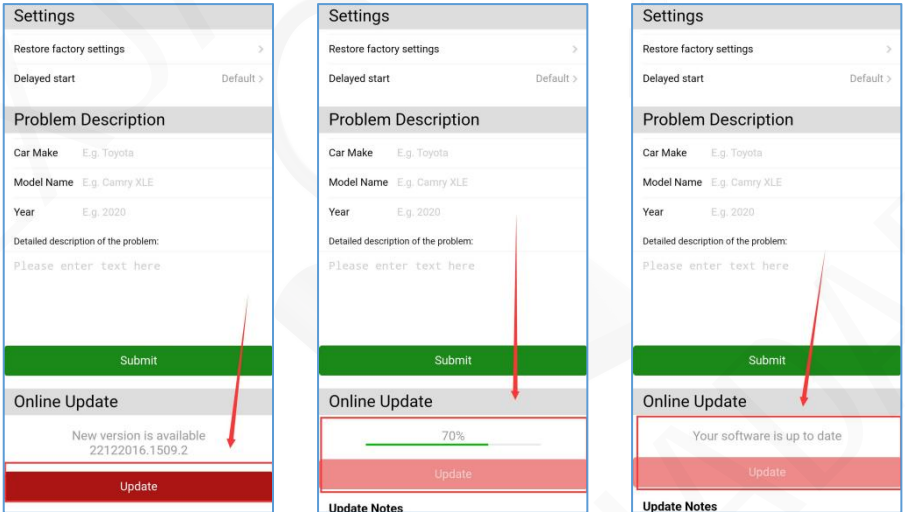
**Step 3:** Open the browser and enter "192.168.1.101", click "Switch P2P", and then click "OK".



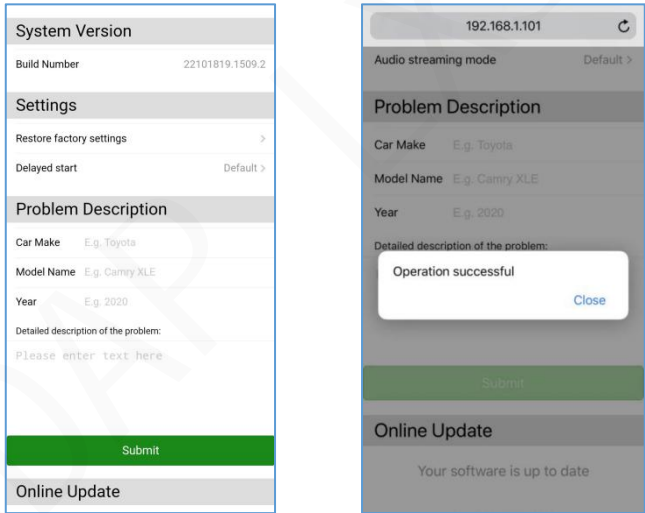
**Step 4:** Return to WiFi Connect, click on "Wi-Fi Direct", and then connect to Available devices (automatically named by Android) ps: This step is only for reference of Android phone users, please ignore this step for iPhone users



**Step 5:** Return to the browser page and click "Update" (during the update process, the signal light will flash when it reaches 70%, and it will return to normal after success). After the upgrade is successful, "Your software is up to date" will be displayed at the bottom of the interface. After the upgrade is completed, Please restart the phone once before using the dongle.



**Step 6:** If your car is not compatible during connection, on the same page, fill in your car make, model year and problem details, then click 'Submit'. Our engineers will receive your question and investigate possible solutions.



\*If your problem is not finally resolved, please contact us for a refund (no return required).

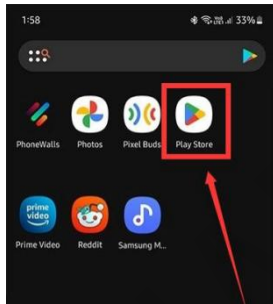


# App Update

## ONLINE UPDATE

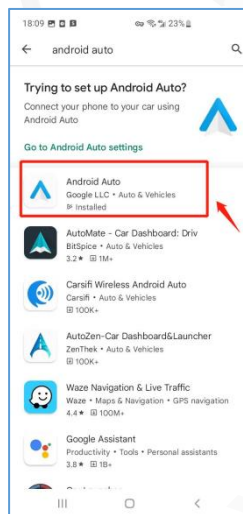
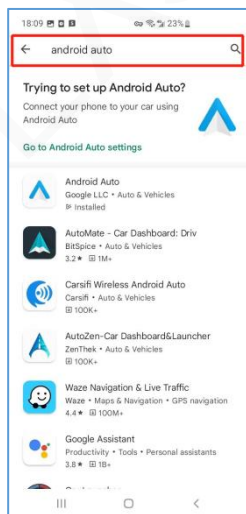
### Premise

If the wireless Android auto cannot be used or after a period of time, please update the latest Android auto program in the mobile phone Google Play program.



**Setp 1:** Open and log in your Google play account

**Setp 2.** Search Android auto in the search bar and click to enter Android auto



**Setp 3.** Update to the latest version

