

Apple logo & App Store are trademarks of Apple Inc., Google logo and Google Play are trademarks of Google Inc.



**service@azdomevip.com**

Response in just 12 hours



WhatsApp Contact

Scan this QR code using the WhatsApp camera to add me on WhatsApp

Product	Car Dashcam
Manufacturer	Dongguan Lingdu Electronic Technology Co., Ltd
Address	1 Longcheng Street, Qingxi Town, Dongguan City, Guangdong Province, China
Product Warranty	One-Year Limited Warranty
Customer Support	service@azdomevip.com

www.azdomevip.com



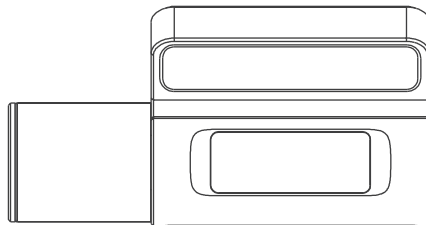
FCC ID: 2BEAP-S17 Pro

V20241113

S17 Pro

# User Manual

## S17 Pro



**AZDOME**

www.azdomevip.com

Enjoy Your Smart Driving

## Table of Contents

English .....	01
---------------	----



[service@azdomevip.com](mailto:service@azdomevip.com)

Scan QR code to download Manual





## Index

1. Customer Service .....	2
2. Important Safety Information .....	3
3. In The Box .....	5
4. Specification .....	6
5. Product Diagram .....	7
6. Getting Started .....	9
7. Installation .....	10
8. Playing Video Files Using Your Smartphone.....	12
9. Dashcam Settings .....	24
10. View Vehicle Remotely.....	31
11. Playing Video Files Using Your Computer. ....	32
12. Firmware Update .....	34
13.Voice Prompts .....	35
14. FAQ .....	36
15. Notice .....	37

## 1. Customer Service



**Defective or damaged item?**

**Inaccurate description?**

**Missing parts or accessories?**

**Performance or quality not adequate?**

**Wrong item was sent?**



**service@azdomevip.com**

**Response in just 12 hours**

**Contact us before returning the item.  
We will help you resolve any issue asap.**



**Note:**

- 1. A 64GB microSD card** is provided with the AZDOME dashcam when you purchase the product. Be sure to format your micro SD card with your dash cam for the first time use.
- Please **ALWAYS** connect with power when using.

## 2. Important Safety Information

Thank you for purchasing this AZDOME dashcam.

This instruction manual contains information on how to operate your dashcam. Before using your dashcam, we recommend that you read through this manual to ensure correct usage. To improve the performance of the product, the contents of this manual are subject to change without prior notice.

**Do not disassemble, repair, or modify the product yourself.**

Doing so may cause fire, electric shock, or malfunction. For internal inspection and repair, contact the service center.

**If any foreign matter gets inside the product, detach the power cord immediately.**

Contact the service center for repair.

**Do not adjust the product while driving.**

Doing so may cause an accident. Stop or park your car in a safe place before installing and setting up the product.

**Do not install the product in a location where the product can interfere with the driver's field of vision.**

Doing so may cause an accident.

**Do not use a damaged or modified power cord. Only use the cords provided by the manufacturer.**

Damaged or modified power cords may cause an explosion, fire, or malfunction.

**Do not operate the product with wet hands.**

Doing so may cause electric shock.

**Do not install the product in an environment with high humidity, or combustible gases or liquids.**

Doing so may cause an explosion and/or fire.

**Do not leave the product near infants, children, or pets.**

There is a risk of them swallowing small components, and/or their saliva may get into the product, causing an explosion due to a short circuit.

**Do not spray water or wax directly onto the product while cleaning the inside of the car.**

Doing so may cause fire, electric shock, or malfunction.

**If smoke or an unusual smell is emitted from the power cord, detach the power cord immediately.**

Contact the service center or your distributor.

**Keep the terminals of the power cord clean.**

Failure to do so may cause excessive heat and fire.

**Use the correct input voltage.**

Failure to do so may cause explosion, fire, or malfunction.

**Plug in the power cord firmly so that it cannot easily be disconnected.**

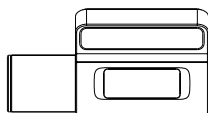
Failure to do so may cause fire.

**Do not cover the product with any material.**

Doing so may cause external deformation of the product or fire. Use the product and peripherals in a well-ventilated location.

### 3. In The Box

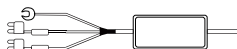
Check the box for each of the following items before installing the dash cam.



Dash camera ×1



Electrostatic films ×2



Hardwire Kit ×1



Cable clips ×5  
Pry tool ×1



64GB SD Card×1



User manual ×1



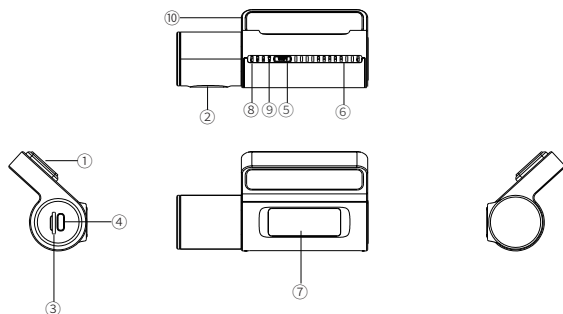
#### Note:

1. To improve the performance of the product, the contents of this manual are subject to change without prior notice.

### 4. Specification

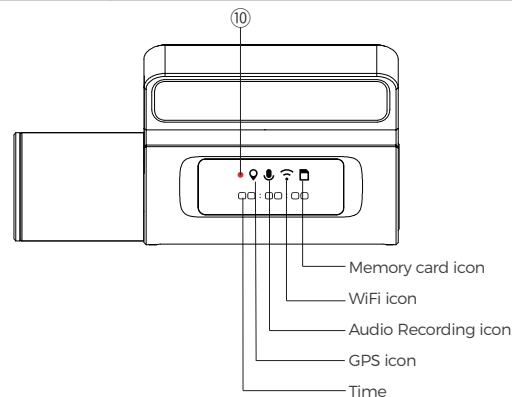
Model	S17 Pro
Screen Size	0.96 inch
Color	Black
Language	English
Aperture	F/NO=2
Memory Card	Micro SD Card Class 10 , U3 Speed, Max Support 128 GB (Not included)
Video Code	H.264
Photo Format	JPG
Video Compression Mode	MP4
Video Resolution	1440P (2560*1440) 30fps, 1080P (1920*1080P) 30fps
WiFi	2.4G WiFi
GPS	Built in and 4G Cat1 (ASR)
Power Interface	5V/2.5A
ROM	16MB flash
RAM	Built-in DDR 64MB
Operation Temperature	-20°Cto 65°C(-4°F to 149°F)

## 5. Product Diagram



#	Description
1	Sticker mount
2	Len(Rotatable)
3	Micro-SD card slot
4	Type-C USB charging port
5	Multi-function Key Short press: Turn on/off WiFi Double click: Turn on/off audio Long press (3s): Lock video Long press (8s): Format memory card and restore default settings

6	Speaker
7	0.96 inch display
8	Microphone
9	Reset button
10	GPS



### Note:

The clock is displayed during normal recording, while the recording duration of the locked video segment is displayed during emergency recording.

	Color	Status
Ⓜ REC	● Blinking	Recording normal video
	● Blinking	Recording locked video

## 6. Getting Started

The camera is designed to power up and record automatically when it receives power. Then saves the video record and turns off automatically when the car shuts off.

### 1. Auto Power ON/OFF:

Plug Hardwire your dash cam to your car's fuse box. When the car engine is on, dash cam will turn ON and start recording automatically.

When the car key is turned to LOCK position, dash cam automatically saves the recording and turns OFF.



### Note:

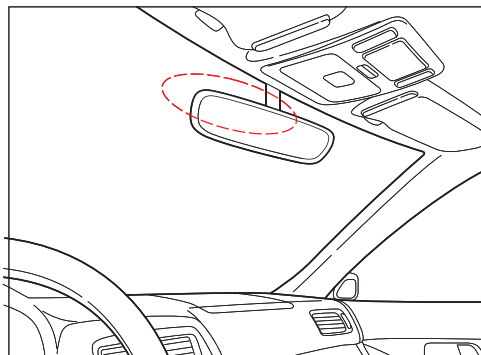
1. A 64GB microSD card is provided with the AZDOME dashcam when you purchase the product. Be sure to format your micro SD card with your dash cam for the first time use.

2. Please ALWAYS connect with power when using.

3. The dash cam will automatically update its time when it is connected to the AZDOME APP on a phone via WiFi.

## 7. Installation

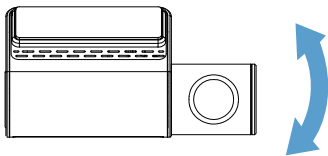
Install the front camera behind the rear view mirror. Remove any foreign matter and clean and dry the windshield before installation.



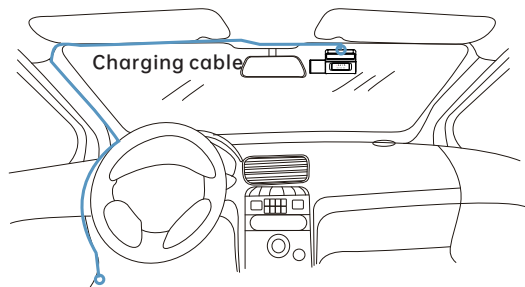
1. Turn off the engine, gently push the card into the slot until it locks into place. (Please using class 10 or above high-speed U3 micro-SD card)

2. Find a suitable place on windshield where don't obstruct the driver's field of vision and remove any foreign matter and clean and dry the windshield before installation. Tear off the protective layer of the electrostatic sticker and adhere the electrostatic sticker to the windshield to prevent mark/glue on your windshield after removing it.

3. Peel off the protective film from the double-sided tape and attach the front camera to the electrostatic sticker. Adjust the angle of the lens by rotating the body of the front camera.

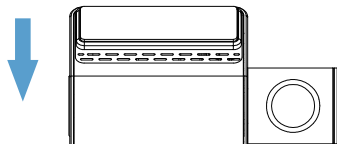


4. Plug the 3-Lead Auto Trigger Hardwire Kit into the your car's fuse box and the front camera. Use the pry tool to lift the edges of the windshield trim/molding and tuck in the power cord.



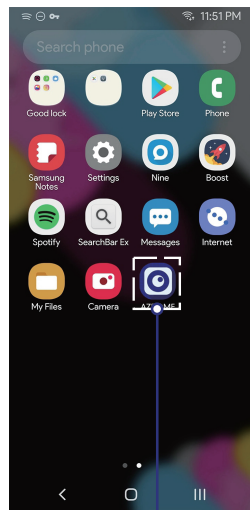
5. Turn on the engine. The dashcam will power up and start recording. Video files are stored on the microSD card. Turn off the engine. The dashcam will automatically stop recording and power down.

detachable cover

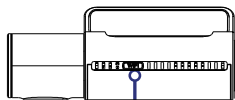


## 8. Playing Video Files Using Your Smartphone

### 8.1 Check real-time video using your smartphone



1 Search for the AZDOME app in the Google Play Store or Apple App Store and install it on your smartphone.



2

Press **WiFi** bottom button or say "WiFi on" to turn on WiFi of dash cam. (Please ALWAYS connect to power supply.)

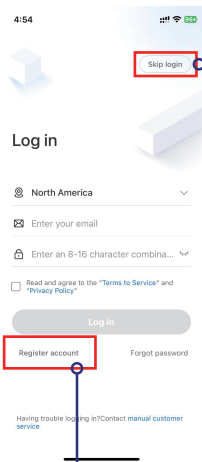


3

Manual WiFi--- Go to Phone's Settings > WiFi > Select WiFi of the dashcam.

**WiFi Name SSID: AZDOME-S17 Pro\_\*\*\*\*\***

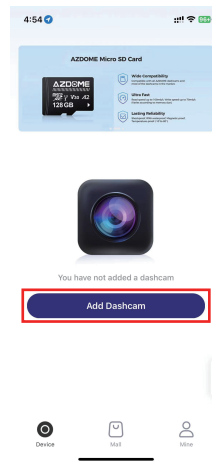
**Default PASSWORD: 12345678**

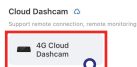
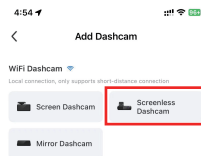


4

After installing the AZDOME APP, if you need use "4G Cloud Dashcam" to go into "View vehicle remotely", you must register your email to log in.

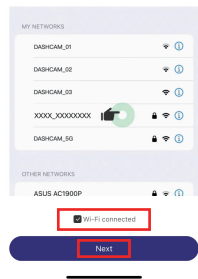
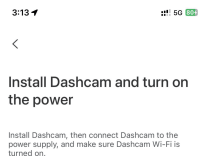
if you only want to view dashcam, click 'Skip Login' in the top right corner to enter the next page and click 'Add Dashcam'.





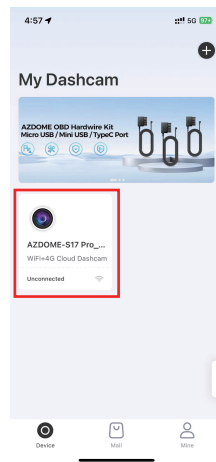
5

Please click "4G Cloud Dashcam" or 'Screenless Dashcam' to proceed. Ensure the dash cam is connected to a 5V/2.5A power supply and is turned on.



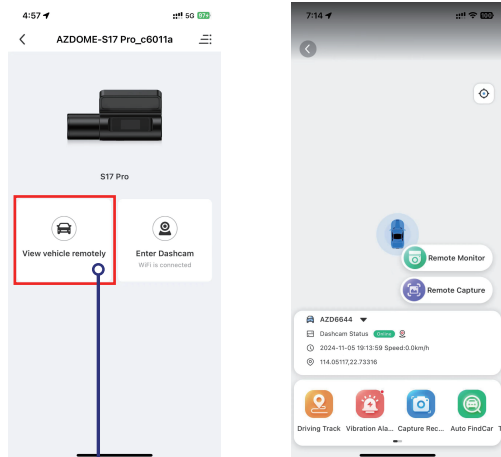
6

Make sure your phone is connected to the WiFi of the dash cam and click 'Next' to proceed. There will show dash cam model S17 Pro when connected successfully.



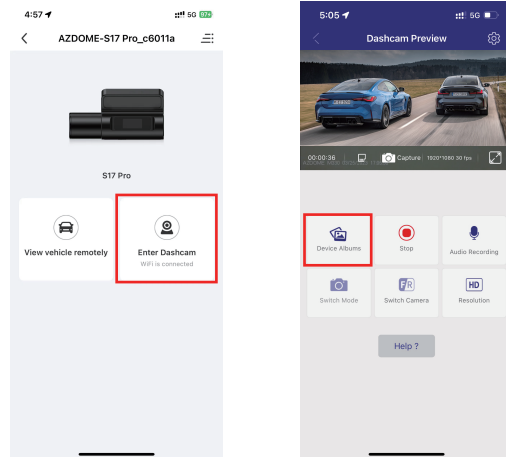


## 8.2 Download the video files into your smartphone



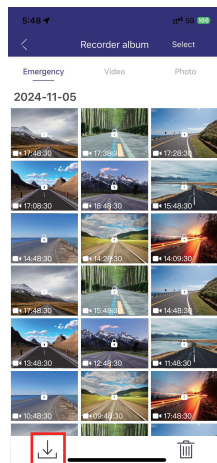
1

Touch the "View vehicle remotely" (if you want to use the "View vehicle remotely", you must register your email to log in) and Then you can remote monitor your car.



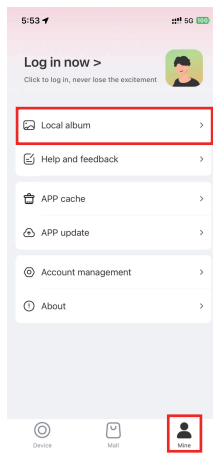
2

Touch the "Enter Dashcam" to go into 'Live Video Preview' interface. Please STOP recording first, then press the 'Dashcam Albums' to get Photo, Video, Emergency files.



3

Select the video files to download into your smartphone. and then you can find these downloaded video files in 'Local album' in 'Mine' menu of the original APP interface.



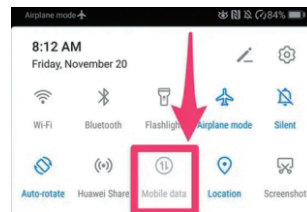
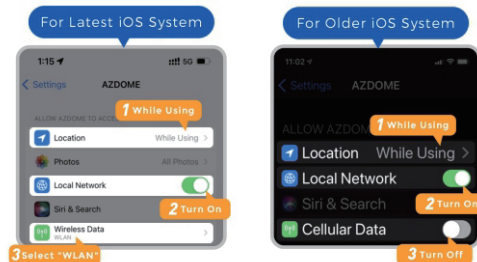
The app won't show the live video on your phone. It only shows a picture of the beach?

The app won't show the live video on your phone. It only shows a picture of the beach?

The connection stability of some models may be affected by the 4G network operator. You can try to connect again after turning off cellular data. Sure that the Local Network of the 'AZDOME' is turned on.

① For Latest iOS System: Setting→AZDOME→Click 'Wireless Data'→Select 'WLAN' .

② For Older iOS System: Setting→AZDOME→Disable the 'Cellular Data'.





### Note:

1. WiFi Direct lets you directly connect your smartphone to your dash cam via WiFi within a range of 10FT.
2. Once it is connected to the AZDOME APP it will automatically update the date/time.
3. The AZDOME is available for devices running Android 5.0 and higher, or iOS 9.0 and higher.

### What is a WiFi Feature?

The WiFi feature has been designed so you can pair your dash camera wirelessly with your smartphone and access your recording instantly from the dash cam. Here you can view, download and share your videos easily with your friends and family. Just like how you would connect your Bluetooth speaker to your smartphone for wireless music play, the same way dash cameras use WiFi signal (instead of a Bluetooth) to pair your smartphone with AZDOME S17 Pro.

### What is the WiFi Range?

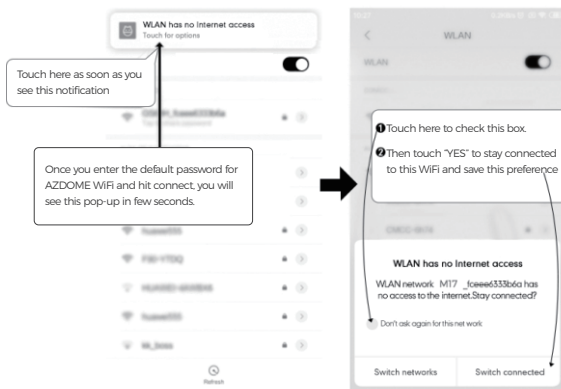
The WiFi signal range is about 10FT when there are NO obstructions in the middle. Please NOTE that just like your home WiFi network, you don't have WiFi signal outside your home, the same way, WiFi range is 10FT from this small device.

### Can I watch the videos around my car remotely?

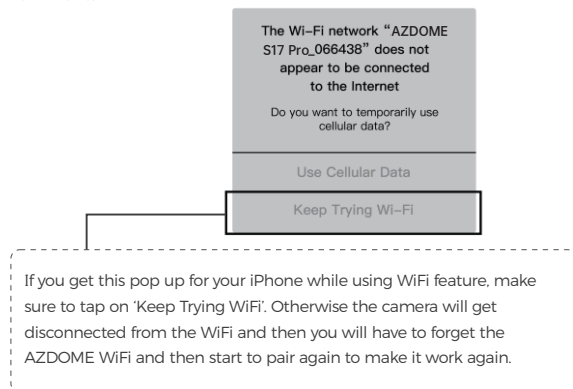
Yes, S17 Pro has a built-in 4G module, you can remotely view vehicle status; support remote capture and remote monitor ; can view driving track, vibration alarm, capture records, auto find car, traffic manage, device manage, etc.;

### For Android phones:

When installing the AZDOME APP, it will have two pop-up prompts, select 'While using the APP' to allow AZDOME to access this device's location, and select 'Allow' to allow AZDOME to access photos and media on your device. There is one extra step you will have to take for the first time. Once you connect to the WiFi of S17 Pro, it will say 'No Internet'. Which is fine. Wait about 10-15 seconds until you see the below pop up or notification. You just have to tap on the pop up notification that will show up in few seconds to select that you still want to stay connected even though there is NO Internet. Once you select this OK, you are set to go.



For iPhone:

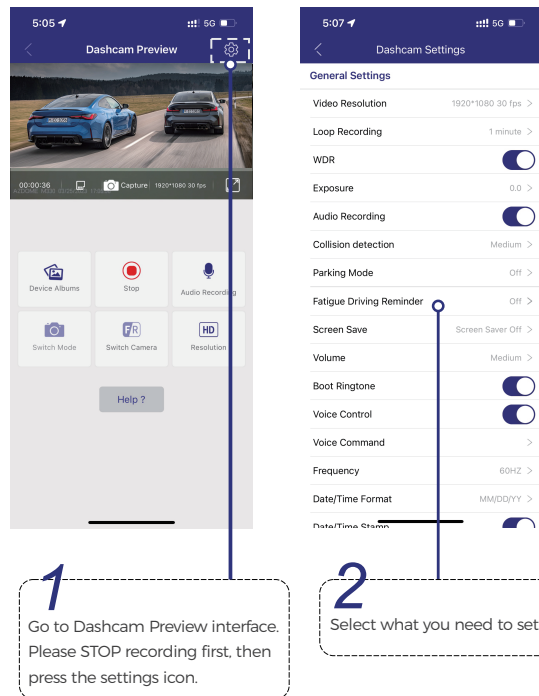


### 8.3 Format Micro-SD Card

There are two ways to format Micro-SD card

1. Press and hold the WiFi button for more than 8 seconds, then release it to restore factory settings and format the memory card. When formatting is successful, a message indicating success will appear on the screen.
2. Please connect to the WiFi of this dash cam through the AZDOME APP, and then click on the settings button in the upper right corner of the real-time preview page to find the formatting menu to format this memory card.

## 9. Dashcam Settings



## 9.1 General Settings

### Video Resolution

The video resolution of this camera is 1440P (2560\*1440) 30fps(Default), 1080P (1920\*1080P) 30fps

### Loop Recording-1min(Default)/2mins/3mins

Please select the length of each video clip (1/2/3 minutes) for loop recording. This function enables continuous recording on the dash cam. Please note that when the memory card becomes full, the dash cam will automatically delete the oldest files to make space for new recordings. This ensures that it can continue recording without interruption.

### WDR— On(Default)/Off

WDR stands for "Wide Dynamic Range," which means the camera or display can adapt to scenes with large differences in brightness, allowing details in both dark and bright areas to be clearly displayed.

### Audio Recording-On(Default)/Off

The dashcam has built-in microphone to record audio with video. You can choose to record mute video by choosing OFF.

**Exposure-2、-1.67、-1.33、-1、-0.67、-0.33、0(Default)、0.33、0.67、1、1.33、1.67、2**

To adjust video exposure setting for either brighter or darker video according to your preference.

### G-Sensor-Off/ Low/ Medium(Default)/High

6-sensor is a 3-axis impact gravitational accelerometer, designed to detect physical and gravitational forces on the dash cam. Once G-sensor has been

triggered due to physical or gravitational impact force on the camera, the current video file will be locked as an emergency file so it won't be deleted by loop cycle function. The higher the G-Sensor sensitivity is, the less force will be needed to trigger automatic file protection.



## Parking Mode

This function will ONLY work when Type-C 3-Lead Hardwire Kit is installed properly (included in the packaging). This parking mode has three options to choose from.

### OFF (Default)

When you turn OFF the car's engine and turn the key to the lock position, the dashcam will STOP to work.

### Collision Detection Parking Mode

1. When you turn OFF the car's engine and turn the key to the lock position, the camera will STOP the continuous video recording and enter Collision Detection Parking Mode.
2. Now while the camera stays in impact detection mode, if someone hits your car and if the impact reaches the set G-Sensor level, then the camera will turn ON > then it will start to record 1-min continuous video, save & lock that video in Event folder > then the camera will turn OFF.
3. Now when you start your car for the next time, the camera will automatically go back into normal video mode automatically to start the continuous video recording.

### Time-Lapse Parking Mode

1. when you turn OFF the car's engine and turn the key to the lock position. Then the camera will STOP the continuous video recording and it will go into the timelapse 1 fps recording mode automatically.

2. Now while this timelapse is being recorded, if someone hits your car and if the impact reaches the set G-Sensor level, then the camera will start to record 1-min continuous video, save & lock that video in Event folder > then return to the timelapse 1 fps recording

3. Now when you start your car for the next time, the camera will automatically STOP the timelapse parking mode. Then it will go into normal video mode automatically to start the continuous video recording.

### Time-lapse video parking monitoring time

8 hours, 12 hours(Default), 24 hours, always

### Fatigue Driving Reminder-Off(Default) / 1 hour/ 2 hours/ 4 hours

Once chose a time duration and turn on this function, the dash cam will make sounds to alert.

### Screen Save— Screen Saver Off(Default)/ Screen Off After 1-Min

Screen Saver Off: This screen will always be on. Screen Off After 1-Min: The screen will turn off after 1 minute of inactivity.

### Volume-OFF/Low/MID(Default)/High

This feature allows you to set the volume level for the boot sound volume, prompt volume through camera's internal built-in speaker.

### Boot Ringtone-On(Default)/Off

This feature allows you to turn ON/OFF the camera's Boot Ringtone.

### Voice Control-On(Default)/Off

ONLY support English: turn on WiFi, take picture, turn off recording, turn off WiFi, open recording, lock the video.



#### Note:

Kindly be informed that the voice control feature has an accuracy of approximately 90%, and it may get activated unintentionally due to surrounding environmental noises. Hence, if you do not require this function, you can deactivate it from the settings menu in the AZDOME APP.

### Voice Command

Say a command, but ONLY support English

- To turn on WiFi, say **Turn on WiFi**
- To turn off WiFi, say **Turn off WiFi**
- To take a picture, say **Take picture**
- To lock the current video files, say **Lock the video**
- To start recording, say **Open recording**
- To stop recording, say **Turn off recording**
- To open screen, say **Open screen**
- To turn of screen, say **Turn off display**

### **Frequency-50HZ(Default)/60HZ**

Here you should choose the frequency accordingly to your power supply specification used in your country based on your geographical location.

### **Date/Time Format - YY/MM/DD, MM/DD/YY(Default), DD/MM/YY**

This feature allows you to select the date format.

### **Speed Unit-KM/H(Default), MPH**

Please select your preference of speed unit.

### **Car Plate Number - On(Default)/Off**

This feature will allow you to insert custom vehicle ID or DriverID to be stamped on video.

### **License Plate**

You can write your license plate number.

### **GPS Information**

APP will show the status of longitude, latitude, live speed, satellite number.

## **9.2 Video Stamps**

**Turn On(Default)/Off the AZDOME Speed, GPS, Date&Time and LOGO** stamp shown on recorded files.

## **9.3 System Setting**

### **Time Zone**

-UTC -12:00 to UTC+12:00, UTC+3(Default)

### **Synchronization Time**

Sync the time of the phone to this S17 Pro dash cam.

### **SD Card Free Storage**

Display remaining storage space on the memory card.

### **Format SD card**

The formatting process will make sure that the card's file system format is optimized for the camera.



#### **Note:**

Note: For stable performance, it is recommended that you format the memory card every 1-2 months.

### **WiFi**

Here you can change the WiFi Name in APP, the default name: AZDOME-S17 Pro\_\*\*\*\*\*

Here you can change the WiFi Password in APP, the default password: 12345678

### **Default Settings**

Reset the Dash Cam to default settings. Your recordings will not be affected.

### **Firmware Version**

Here you can check the current firmware version installed on your camera. You will need this information in the future to check if newer version of firmware is available.

## 10. View Vehicle Remotely

### 4G View Vehicle Remotely

You can Online view driving track, vibration alarm information(includes 15S's video files), capture records, auto findcar, traffic manage, device manage, etc.

#### Parking mode:

##### 1.Collision Detection Parking Mode

When you turn OFF the car's engine, the dashcam power off and enters parking sleep mode. If someone hits your car, the dashcam is woken up> then it will start to record 1-min continuous video, save & lock that video in Event folder >then the camera will enter parking sleep mode again. At the same time, a 15S vibration alarm video will be uploaded to your phone APP.

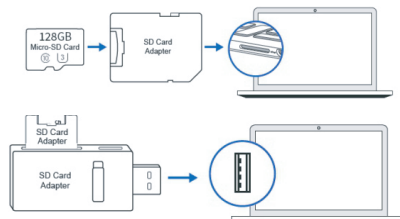
2.When you turn OFF the car's engine, the dashcam power off and enters parking sleep mode. Click "Remote Monitor"/"Remote Capture" on the APP to wake up the dashcam. At the same time, a waiting prompt message will pop up on the APP. When the device status is online, you can click "Remote Monitor"/"Remote Capture" again to operate (each time the dashcam is woken up, the dashcam remains on for 3 minutes)

##### 3. Time-Lapse Parking Mode:

When you turn OFF the car's engine, the dashcam turns off the screen and enters the 1fps Time-Lapse Parking Mode, and the dashcam displays online. Click "Remote Monitor"/"Remote Capture" on the APP to operate normally. If someone hits your car and if the impact reaches the set G-Sensor level, then the camera will start to record 1-min continuous video, save & lock that video in Event folder. At the same time, a 15S vibration alarm video will be uploaded to your phone APP.

## 11. Playing Video Files Using Your Computer

1. Remove the microSD card from the dashcam.
2. Insert the card into a microSD card reader and connect it to your computer.



3. Depending on the pre-installed hard drives, you should be able to locate the added flash drive as drive "D," "E," or another name. Once you have located the drive, double-click it to access the file folders, which include Normal, Event, and Photo.

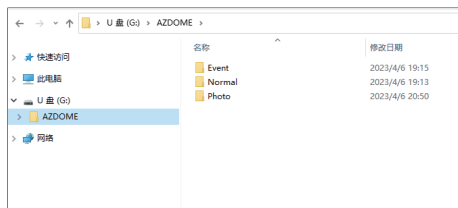
Normal: Normal recording mode saves video files in a loop, allowing them to be overwritten when storage space is needed.

Event: In Event recording mode, the video file will be locked and protected from deletion by the loop recording function.

Photo: This is the folder for storing captured photos. To play the videos, simply double-click on them.

We recommend using VLC Media Player, which can be downloaded for free at: [www.videolan.org](http://www.videolan.org).

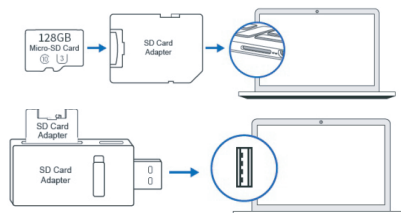




File named \*\*\*\*\*.MP4 = Dash cam video file

## 12. Firmware Update

1. Remove the microSD card from the dashcam.
2. Insert the card into the microSD card reader and connect it to a computer.



3. Download the latest S17 Pro Firmware from [www.azdomevip.com](http://www.azdomevip.com) > **Support** > **Downloads** on your computer.

4. Unzip the downloaded firmware (Zip file) and copy the firmware file named "\*\*\*\*\*.bin" to the root directory of microSD card.

5. Connect the camera to the Hardwire kit to start the firmware update process. You should see the upgrade progress bar which means your S17 Pro dash camera is updating the new firmware.

Please NOTE:

The firmware update may take up to about 1 mins. So please be patient. Make sure the POWER does NOT get disconnected while the firmware is being updated. Once the firmware is updated, the camera will turn OFF automatically.

6. You can turn on and check the latest firmware version by going into the APP's settings > Firmware Version.

## 13. Voice Prompts

Prompt Voice	Description
Emergency Video	During recording once G-Sensor triggered
WiFi ON	Default ON, after powered on, say it
WiFi OFF	Press and hold Wi-Fi button for 3s to switch off, say it
Memory card error	Wrong/bad/fake memory card
Recording started	After powered on and boot ringtone /operate via App, say it
Recording stopped	Operate via App, say it
Sound as "Click"	Take picture via App, say it
Format Successfully	Format memory card successfully
Format Failed	Format memory card failed
Parking mode is on	Parking Mode has been turned on
Parking mode is off	Parking Mode has been turned off

## 14. FAQ

### Q1: Camera turns ON / OFF automatically?

Ensure that the output current can reach 5V/2.5A and use our Hardwire kit.

### Q2: Video Image is blurred?

Remove the protective lens film, clean the lens, make sure the windshield is clean and clear of grease, dirt, and debris.

### Q3: Camera gets HOT?

It is normal for your camera to run slightly hot. Due to video being recorded at high speed, the dash cam may be hot during using.  
(No more than 149°F/65°C).

### Q4: Video Files cannot be played on my computer?

The video files from the Dash Cam are in MP4 format and may not be compatible with your PC if suitable playback software is not installed.

### Q5: Video has no sound?

Ensure that 'Audio Recording' setting is turned ON.


### Q6: Video is blurred?


The Dash Cam has a minimum focal range of around 2 meters.  
Objects closer than this are likely to become blurred.


### Q7: Voice prompt Memory Error?

Using unqualified SD or third party cards can affect dashcam's performance and in some cases, force the dashcam to reboot randomly during recording. If it still can not work normally, it should be that the TF card is unqualified and can not meet the recording requirements of the dash cam. Please contact us to get a new memory card.

## 15. Notice

 This product complies with the radio interface requirements of the European Community.

 This symbol means the product must not be discarded as household waste, and should be delivered to an appropriate and recycling helps protect natural resources, human health and the environment. For more information on disposal and recycling of this product, contact your local municipality, disposal service, or the shop where you bought this product.

 Changes or modifications not expressly approved by the party responsible for compliance could void the user's authority to operate the equipment.

This equipment has been tested and found to comply with the limits for a Class B digital device, pursuant to Part 15 of the FCC Rules. These limits are designed to provide reasonable protection against harmful interference in a residential installation. This equipment generates, uses and can radiate radio frequency energy and, if not installed and used in accordance with the instructions, may cause harmful interference to radio communications. However, there is no guarantee that interference will not occur in a particular

If this equipment does cause harmful interference to radio or television reception, which can be determined by turning the equipment off and on, the user is encouraged to try to correct the interference by one or more of the following measures:

- Reorient or relocate the receiving antenna.
- Increase the separation between the equipment and receiver.
- Connect the equipment into an outlet on a circuit different from that to which the receiver is connected.
- Consult the dealer or an experienced radio/TV technician for help.

This device complies with Part 15 of the FCC Rules.

Operation is subject to the following two conditions: (1) this device may not cause harmful interference, and (2) this device must accept any interference received, including interference that may cause undesired operation.

This equipment complies with FCC radiation exposure limits set forth for an uncontrolled environment. This equipment should be installed and operated with a minimum distance of 20cm between the radiator & your body. This transmitter must not be co-located or operating in conjunction with any other antenna or transmitter.