

460mm

155mm

Limited Warranty

The Waterdrop Ultrafiltration Faucet Filtration System offers 1-year warranty, which covers defects in materials and workmanship from original date of purchase. If the product proves to be defective within 1 year from the date of purchase, please call our technical support hotline.

During the warranty period, we will replace or repair any part which is deemed to be defective, if product has not been subjected to tampering, alteration or improper use after delivery, and has not been repaired by the manufacturer.

The product is not warranted against misuse, use in abnormal operation temperature conditions, conditions outside listed operating parameter, sue in commercial operations or any other manner outside the "System Specifications" set forth in the owner's manual. Our obligation does not include the cost of transportation. We are not responsible for damage in transit, and claims for such damage should be presented to the carrier by the customer.

NOTE: It does NOT apply to any filter cartridge, which has a life expectancy that varies based on incoming water quality.

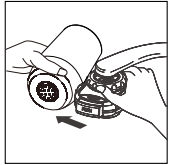
Qingdao Ecopure Filter Co., Ltd.
Tel: 1-888-352-3558 (U.S.)
E-mail: CT@waterdropfilter.com
Add: No.13, Yishengbai Road Jimo, Qingdao, China



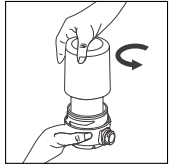
Made in China V050

Filter Cartridge Replacement

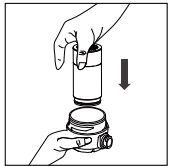
For optimum performance, it is highly recommended you use genuine Waterdrop faucet replacement water filter. And it is also advisable to change your filter every 3 months or 320 gallons to keep water fresh, whichever comes first. This will vary based on water usage and water quality.



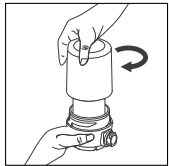
1. Twist the Filter Base (D) from the Mounting Base (H).



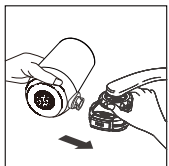
2. Twist the Filter Top Cover (C) off and take out the old filter.



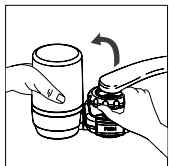
3. Insert the new filter into the Filter Base (D).



4. Twist the Filter Top Cover (C) on.



5. Align the slot of Filter Base (D) with the slot of Mounting Base (H).



6. Insert Filter Base (D) into Mounting Base (H) and rotate 90° upwards.

Warnings

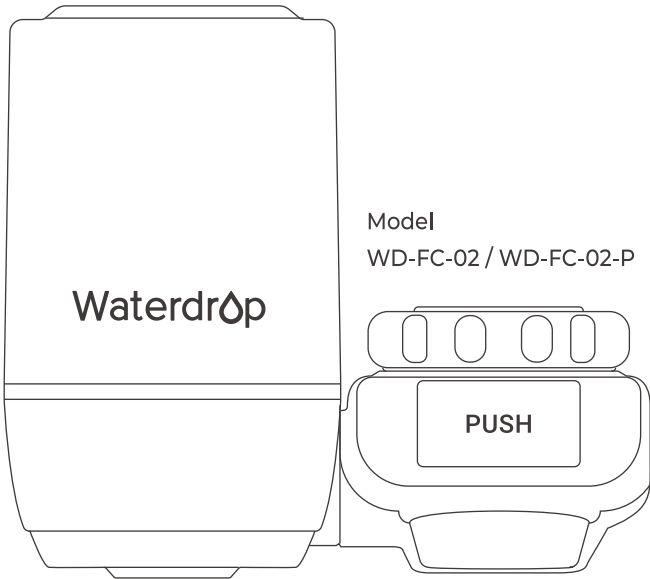
- Do not use with water above 100°F/38°C.
- Flush the system for 1 minute before use after a long time of non-use.
- Prior to each use, run water through the filter for 5 to 10 seconds to activate the filter.
- The filter system must be protected against freezing temperatures, frost, snow, sleet and ice. Exposure to these elements can produce cracks and product failures.
- Please do not touch the filtered water outlet to prevent bacterial growth.
- Do not use steel wire brush or corrosive liquids to clean the product.
- Change the filter every 3 months or 320 gallons for best filtration performance.

Frequently Asked Questions

- Q: Why does water leak between the mounting base and the faucet?**
A: Please check if the Teflon Tape is wrapped properly. If not, bind the tape again around the joint of mounting base and the faucet. If there is still water leakage, check whether the silicone washer is installed. Make sure that the silicone washer is installed in place.
- Q: Why does the filtered water run quite slowly?**
A: The filter cartridge may be clogged. Replace the filter cartridge.
- Q: Why does the unfiltered water run quite slowly?**
A: There may be dirt in filter steel mesh. Clean the filter steel mesh.
- Q: Why does the water taste funny?**
A: The filter cartridge is not installed appropriately, or it should be replaced. Please reinstall it in a correct way. If there is still bad taste, please replace it.

Waterdrop

Ultra Filtration
Faucet Filtration System
OWNER'S MANUAL



About the System

Thanks for choosing Waterdrop Ultrafiltration Faucet Filtration System!

This faucet filtration system ensures to give you clean and healthy water with Activated Carbon Fiber (ACF) filter and Ultrafiltration (UF) membrane filter. The accuracy of UF filtration will be up to 0.1 micron so that it will effectively filter rust, chlorine, unpleasant taste and odor, heavy metals, bleaching powder, and red worm. The system ensures to leave beneficial minerals in drinking water to maintain health.

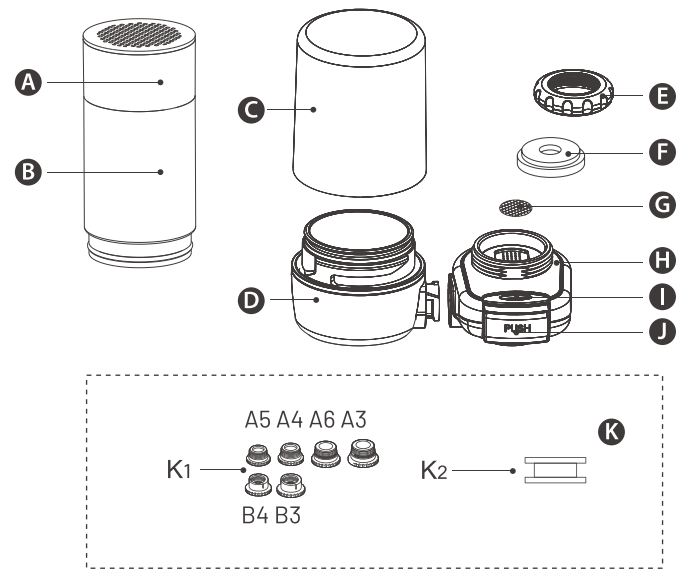
System Specifications

To achieve optimal performance, it is recommended to use the system within the system specifications.

System Model No.	WD-FC-02/WD-FC-02-P
Replacement Model No.	WD-FF-02A
Rated Capacity	320 gallons or 1,200 litres
Rated Flow	0.5 gpm/2 lpm
Operating Temperature	41 -100°F/5-38°C
Operating Working Pressure	15-100 psi/100-689 kPa

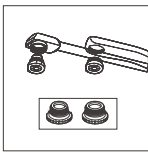
NOTE:
Use with cold water only
Do not use with water that is microbiologically unsafe or of unknown quality without adequate disinfection before or after the system.
The result is from testing data under laboratory conditions.

Parts List

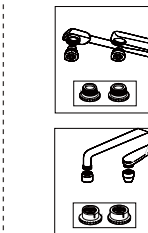


- (A) Activated Carbon Fiber (ACF) Filter
(B) Ultrafiltration (UF) Membrane Filter
(C) Filter Top Cover
(D) Filter Base
(E) Mounting Nut
(F) Silicone Washer
(G) Steel Mesh
(H) Mounting Base
(I) Display Area
(J) PUSH Button
- (K) Accessories
(K1) 6x Adapter
M18.5(A5), 13/16"(A4),
M21.5(A6), 15/16"(A3),
M18.5(B4), 55/64"(B3)
(K2) 1x Teflon Tape

Installation Instructions



Step 1
Remove your original aerator and its washer. Use a rubber jar opener if aerator is difficult to remove. Choose the right adapter to match your faucet threading.

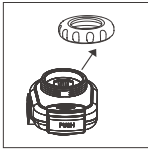


How to Choose the Right Adapter

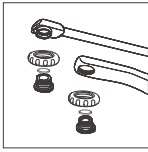
A5 A4 A6 A3
B4 B3

For internal threaded faucets, choose from A5, A4, A6 or A3.

For external threaded faucets, choose B4 or B3.

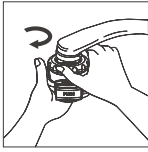


Step 2
Unscrew the Mounting Nut (E) from the Mounting Base (H) by turning counter-clockwise. Then put the Mounting Nut (E) on faucet.

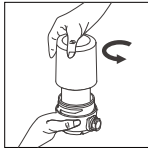


Step 3
Wrap Teflon Tape (K2) around the joint of mounting base and the faucet. You can hand-tighten the adapter and do not over-tighten it.

NOTE: The silicone washers have been installed into the adapters, and be careful not to omit the washer during the installation. Otherwise, this may cause water leakage.

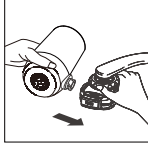


Step 4
Screw the Mounting Base (H) onto the Mounting Nut (E) firmly by turning clockwise.

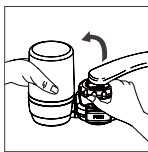


Step 5
Unscrew the Filter Top Cover (C) from the Filter Base (D). Take out the filter from package and remove the protective film. Insert the filter into Filter Base (D). Twist the Filter Top Cover (C) back to Filter Base (D) securely.

NOTE: Please insert the filter firmly until it sits.



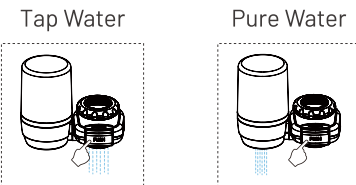
Step 6
Align the slot of Filter Base (D) with the slot of Mounting Base (H).



Step 7
Insert the Filter Base (D) into the Mounting Base (H) and rotate 90° upward.

How to Use

After installation, open faucet. Press the "PUSH" button to "pure" position, and the filtered water will run through. Press the "PUSH" button to "tap" position, and unfiltered water will run through.



NOTE:
1. Before first use, run cold water for 1 minute in "pure" position. Do not run hot water through the filter. During flush, it is normal to see cloudy water and hear the sound of water pushing air out of the filter cartridge.
2. Check for leaks. If there is any leak, please refer to FAQ.
3. Please gently press the "PUSH" button to avoid damage to mounting base.

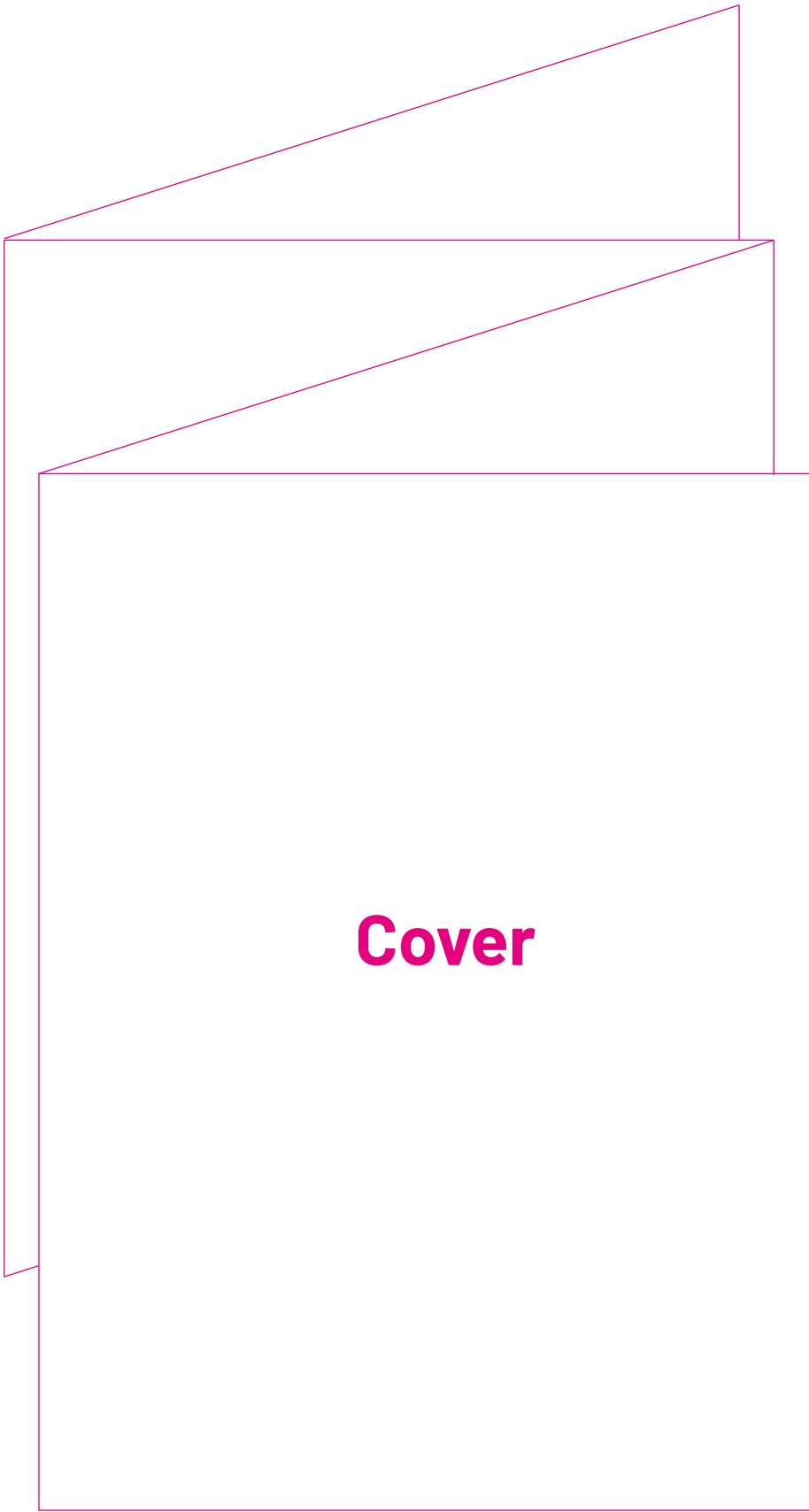
折线

折线

折线

材质：80g双胶纸，4C，
规格：460x155mm，风琴折（4折页）

Folding Guide



Back Cover	5	6	Cover
-----------------------	----------	----------	--------------

1	2	3	4
----------	----------	----------	----------