



M-ELEC ML-C20-
1830-M Down
Lights



M-ELEC ML-C20-1830-M Down Lights Owner's Manual

[Home](#) » [M-ELEC](#) » M-ELEC ML-C20-1830-M Down Lights Owner's Manual 

Contents

- [1 M-ELEC ML-C20-1830-M Down Lights](#)
- [2 Product Usage Instructions](#)
- [3 Product information](#)
- [4 TECHNICAL INFORMATION](#)
- [5 INSTALLATION GUIDE \(RECESSED\)](#)
- [6 INSTALLATION GUIDE \(SURFACE MOUNT\)](#)
- [7 Documents / Resources](#)
 - [7.1 References](#)
- [8 Related Posts](#)



M-ELEC ML-C20-1830-M Down Lights



Specifications

- Model: C-Series Downlights
- Wattage Options: 13W, 25W, 30W
- Luminous Efficiency: Remarkable
- Design: Sleek with concave front
- Optics: Reflector and lens optic fusion
- UGR: Available

Product Usage Instructions

Installation

1. Ensure the power source is switched off before installation.
2. Mount the downlight securely on the ceiling using the provided mounting hardware.
3. Connect the wiring following the manufacturer's instructions.
4. Turn on the power to test the downlight.

Adjustment

To adjust the direction of the light beam, gently rotate the downlight housing while ensuring it is securely fastened to the ceiling.

Maintenance

Regularly clean the downlight using a soft, dry cloth to remove dust and dirt. Avoid using harsh chemicals or

abrasive materials that may damage the finish.

FAQ

• **Q: Can I use higher wattage bulbs with the downlight?**

A: It is recommended to only use bulbs within the specified wattage range to prevent overheating and ensure optimal performance.

• **Q: Are these downlights suitable for outdoor use?**

A: No, these downlights are designed for indoor use only. Using them outdoors may lead to damage due to exposure to weather elements.

C-SERIES

Commerical Downlights

C-Series Downlights

13W, 25W & 30W

Product information

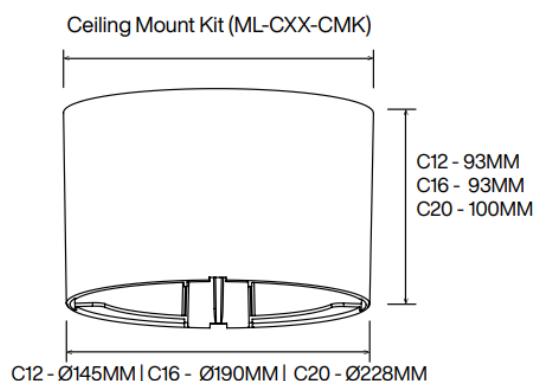
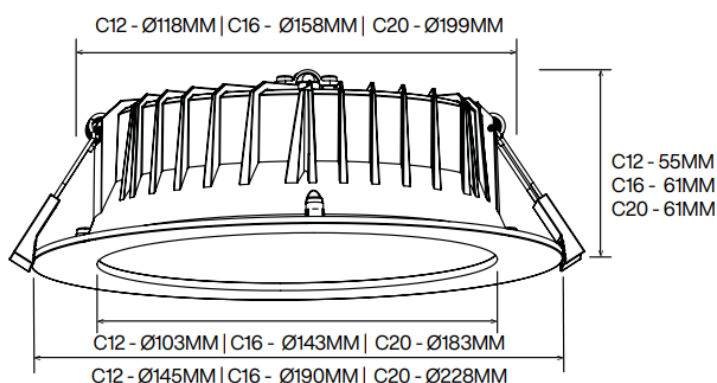
The Commercial Series downlights boast remarkable luminous efficiency and sleek design. Featuring a concave front, reflector and lens optic fusion, and UGR <19, to reduce glare for pleasant ambiance. With adaptable mounting options and adjustable CCT (3000K, 4000K, 5700K), they suit various spaces like offices, schools, and hotels.

TECHNICAL INFORMATION

	ML-C12-0613-M	ML-C16-1325-M	ML-C20-1830-M
Total Power	6-13W (6W / 8W / 10W / 13W) *	13-25W (13W / 16W / 18W / 20W / 25W)	18-30W (18W / 20W / 22W / 25W / 30W)
Lumen Output	(Max wattage) 13W: WW 1400lm NW 1550lm W 1550lm	(Max wattage) 25W: WW 2750lm NW 3100lm W 3000lm	(Max wattage) 30W: WW 3650lm NW 3900lm W 3900lm
Colour Temp	WW 3000K NW 4000K W 5700K		
IP Rating	IP40 Back IP54 Front		
CRI	80		
UGR	6-8W, UGR<19, 10-13W UGR<22	13W, UGR<19, 16-25W UGR<22	18-20W, UGR<19, 22-30W UGR<22
Efficacy	(Max wattage): WW 153lm/W NW 130lm/W W 125lm/W	(Max wattage): WW 115lm/W NW 135lm/W W 130lm/W	(Max wattage): WW 125lm/W NW 140lm/W W 135lm/W
Beam Angle	60 Degrees		
Dimmable	NO		

Power Supply	AC 220-240VAC External, isolated driver		
Power Factor	0.9		
Input current	0.07A	0.14A	0.17A
Inrush current	Up to 7 times input current		
Frequency	50/60 Hz		
Average Life	50,000 hrs**		
Dimensions/Depth	Diameter 145mm Depth 55mm***	Diameter 190mm Depth 61mm***	Diameter 228mm Depth 61mm***
Cut Out	120-130mm	160-170mm	200-210mm
Weight	0.32kg	0.59kg	0.79kg
Operating Temp	-20°C to 40°C		
Compliance	GMA, C-TICK, IP54/IP40, IC-4		
Connection	750mm Flex & Plug		
LED Chip Brand	SMD2835		
Materials	PC Diffuser and lens, aluminium housing		
Kit Includes	1 x LED Downlight, 1 x Power Selectable Driver with 750mm Flex & Plug		

*Total power consumed including driver | ** Average life is calculated on expected average lifespan | ***Total depth measured from front of mounting surface to top of downlight

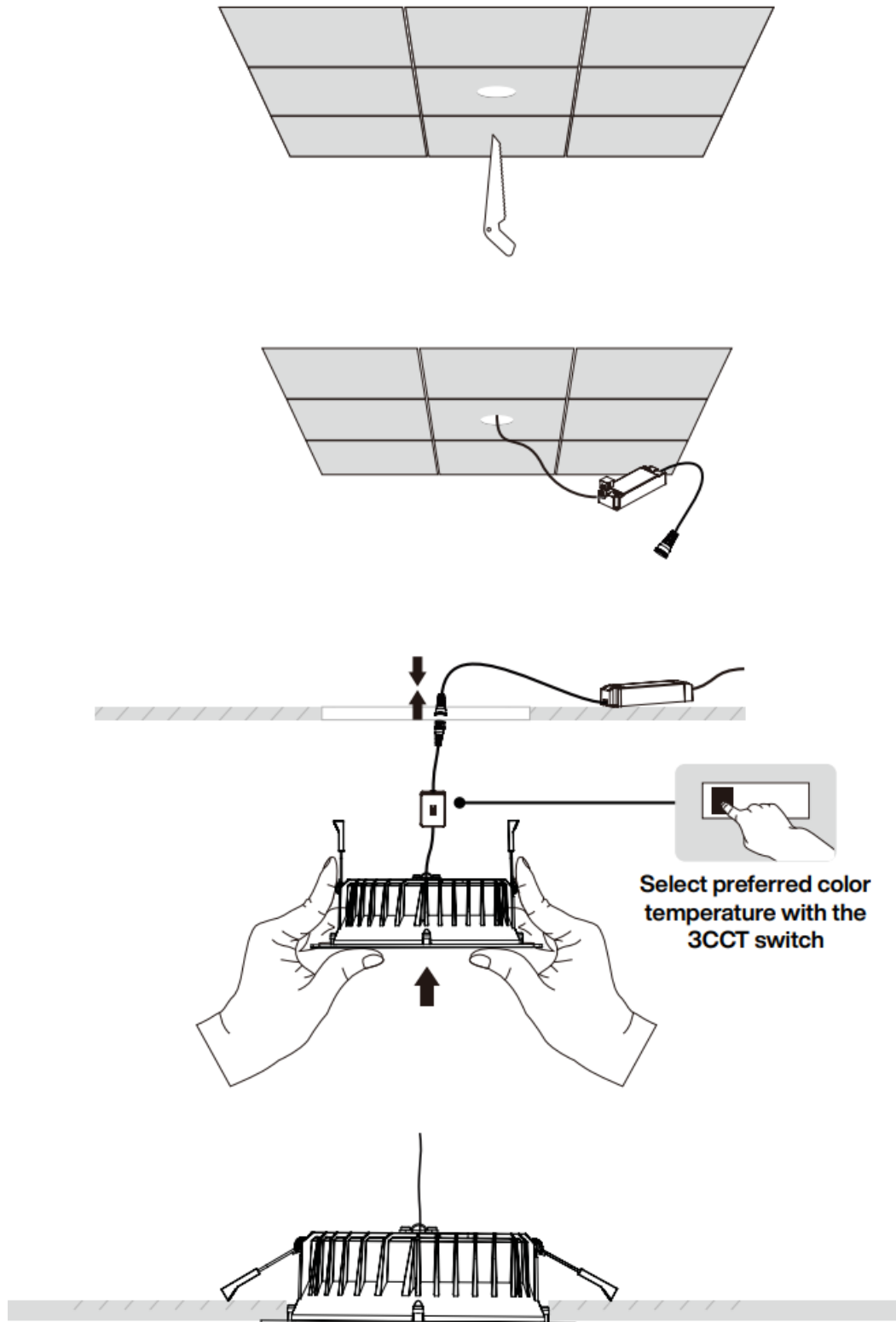


T. 1300 222 445 | www.melec.com.au

For further information about our Warranties please go to: melec.com.au/legal/warranties

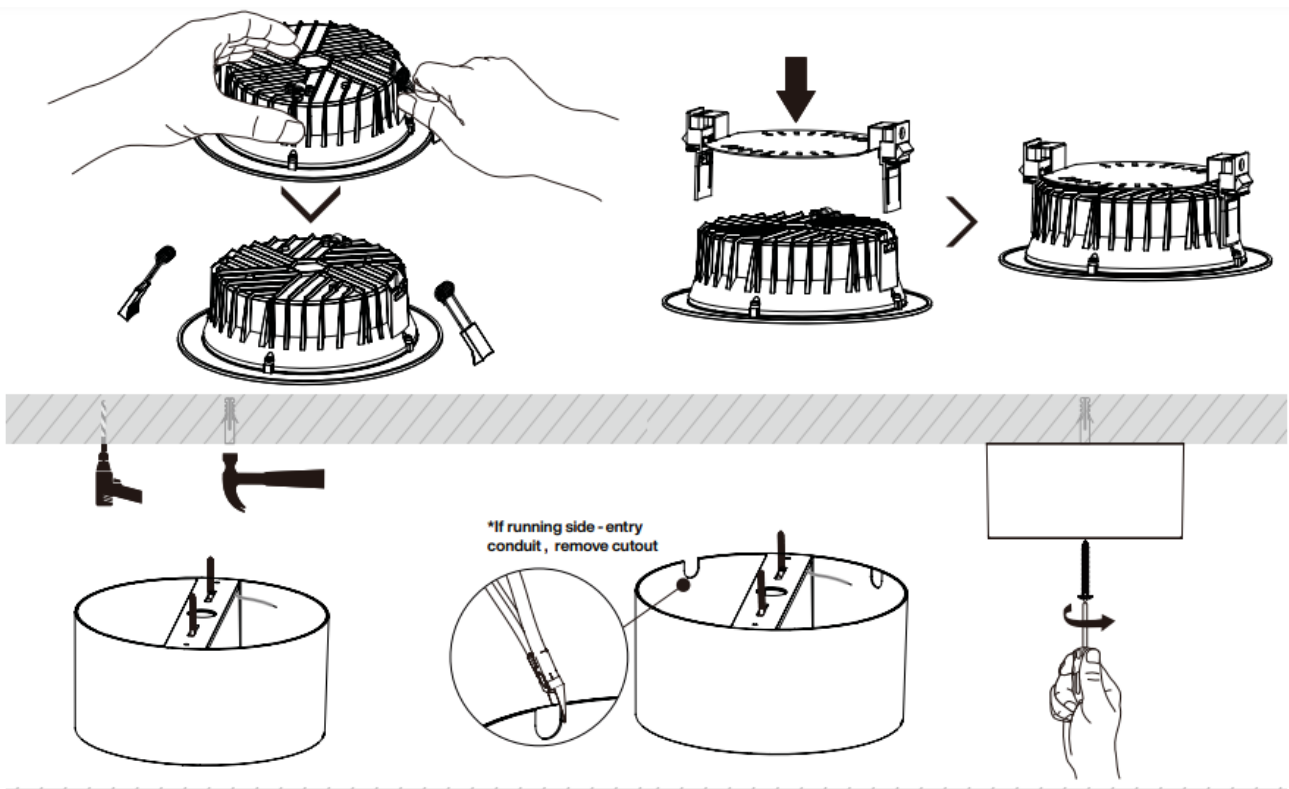
INSTALLATION GUIDE (RECESSED)

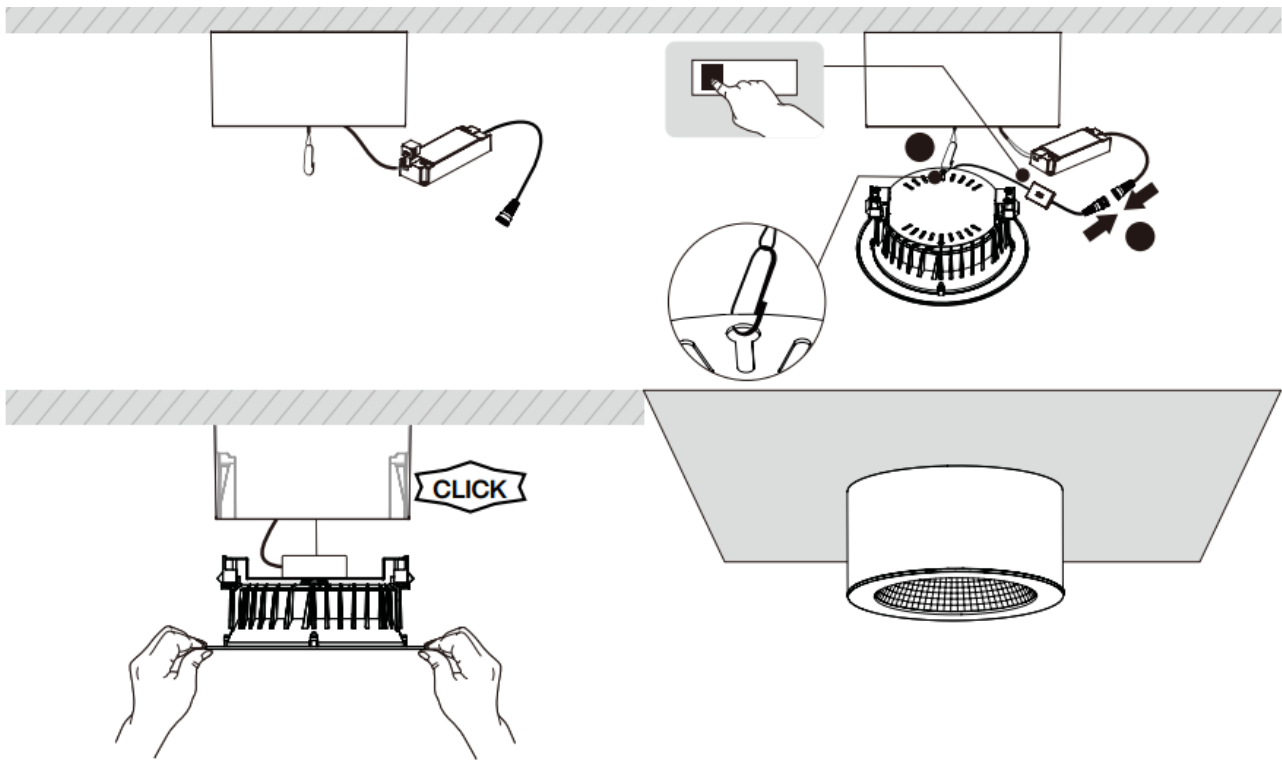
1. Before commencing installation or maintenance, ensure electricity is switched off at the mains.
2. Remove existing downlight and disconnect old transformer OR for new installations mark and cut out a hole in ceiling (118mm for C12, 158mm for C16, 199mm for C20).
3. Set the desired power output with the “selector switch” on the back of the driver.
4. Connect the driver plug into a plug base.
5. Connect the fitting to the driver and set the desired colour output on the CCT switch.
6. Carefully bend spring clips upwards and install new LED downlight



INSTALLATION GUIDE (SURFACE MOUNT)

1. Before commencing installation or maintenance, ensure electricity is switched off at the mains.
2. Remove the spring clips on the fitting and attach the fixing plate.
3. Feed your input wire through the center hole of the ceiling mount kit, and affix onto your installation surface with appropriate fixing methods.
4. If you are running conduit into the ceiling mount kit, remove the side knockouts.
5. Connect the driver plug into a plug base.
6. Set the desired power output with the “selector switch” on the back of the driver.
7. Connect the fitting to the driver and set the desired colour output on the CCT switch.
8. Secure the safety wire and clip onto the fixing plate.
9. Install the downlight with the fixing plate into the ceiling mount kit until an audible click is heard, indicating that the downlight is properly secured.





WARNINGS

- Electrical equipment/work shall be performed by Qualified Tradespeople.
- If components are damaged, it shall be replaced by Qualified Tradespeople to avoid and Hazards.

Insulation Distance: Refer to AS3000

1. HCB (Height clearance to building element) Minimum distance as specified by the luminaire manufacturer between the top of the luminaire and any building element above it.
2. MIC (Minimum insulation clearance) Minimum distance as specified by the luminaire manufacturer between the top of the recessed luminaire and the building insulation above it.
3. SCB (Side clearance to building element) Minimum distance between the side of the recessed luminaire and any building element as specified in AS/NZS 3000, or as specified by the luminaire manufacturer.
4. SCI (Side clearance to insulation) Minimum distance as specified by the luminaire manufacturer between the recessed luminaire and any building insulation.
5. SCG (Side clearance to auxiliary equipment (control gear (CG)))

NOTE: The LED driver Must sit on top of insulation and MUST NOT be covered.

IC-4

RISK OF FIRE – Required clearance from structural members and building elements.

SCB =0mm **MIC**=0mm **SCI**=0mm **HCB** =0mm **SCG**=50mm

WARNING – RISK OF OVERHEATING OR FIRE IF CLEARANCE DISTANCES ARE AHEARED TO.



At M-Elec our goal is to not to just supply electricians with the best products but the best services as well. That's why we've partnerred with Sparkys United. Be part of the electrical community today.

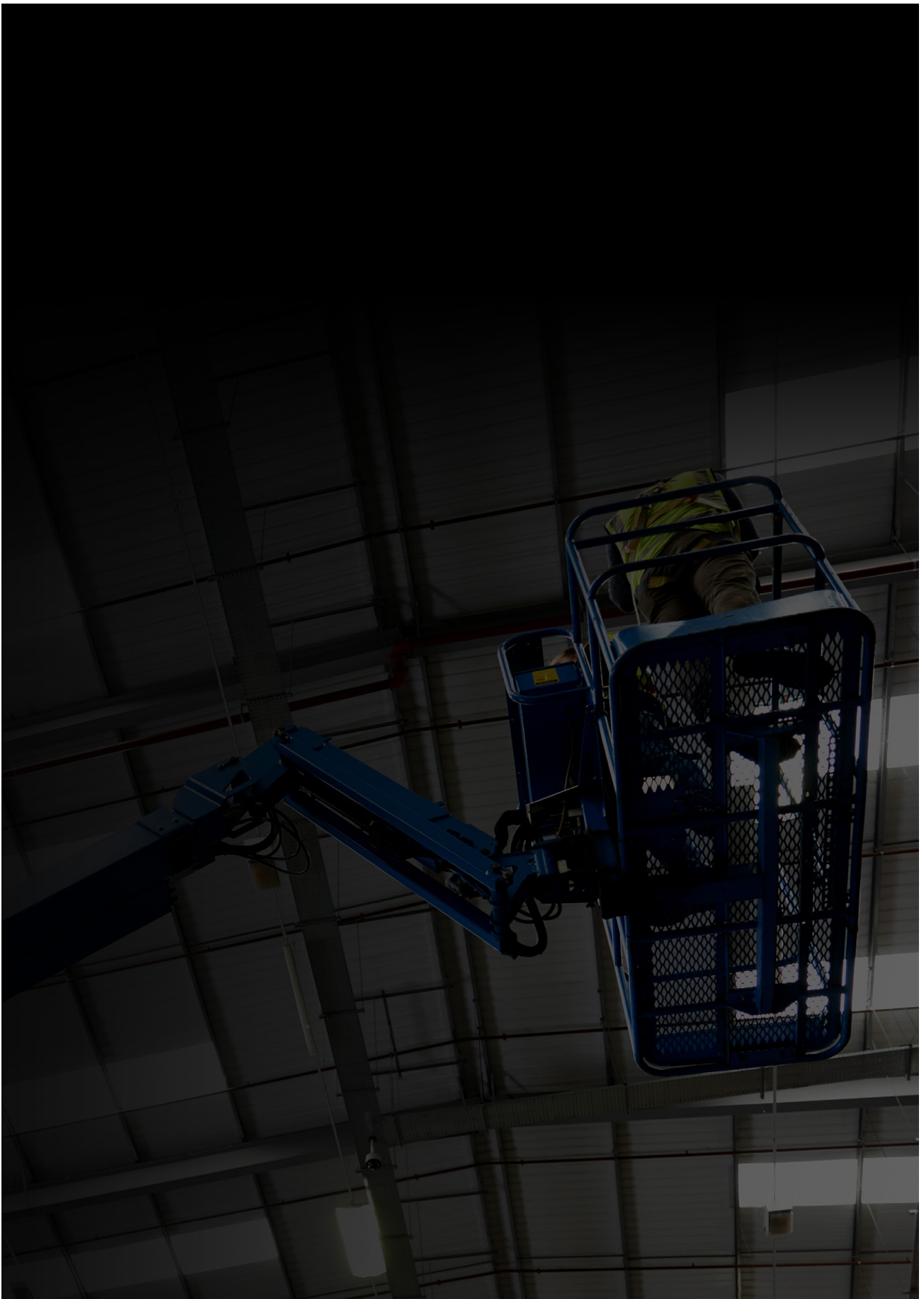
Register for free now sparkysunited.com.au/warranty

Free onsite warranty for 3 years.

Includes labour & hire.

In conjunction with your standard product warranty.

We've got your back!



Documents / Resources



M-ELEC ML-C20-1830-M Down Lights [pdf] Owner's Manual

ML-C20-1830-M, ML-C20-2530-M, ML-C20-3030-M, ML-C20-1830-M Down Lights, ML-C20-1830-M, Down Lights, Lights

References

- [!\[\]\(cf5be311f7b2821912d8009884508fa2_img.jpg\) **M-Elec – Illuminated by design**](#)
- [**User Manual**](#)

Manuals+, Privacy Policy

This website is an independent publication and is neither affiliated with nor endorsed by any of the trademark owners. The "Bluetooth®" word mark and logos are registered trademarks owned by Bluetooth SIG, Inc. The "Wi-Fi®" word mark and logos are registered trademarks owned by the Wi-Fi Alliance. Any use of these marks on this website does not imply any affiliation with or endorsement.