

Lynx Tip 10 Plotting Graphs And Adding Grids To The Background User Guide

[Home](#) » [LYNX](#) » Lynx Tip 10 Plotting Graphs And Adding Grids To The Background User Guide 

LYNX

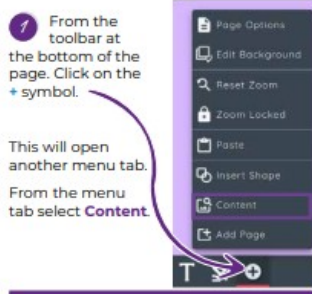
Tip 10

Plotting graphs and adding grids to the background

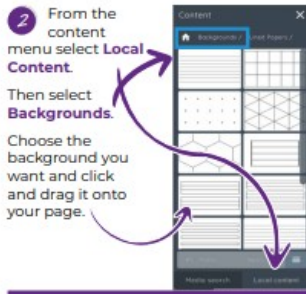
Contents

- [1 Tip 10 Plotting Graphs And Adding Grids To The Background](#)
- [2 Documents / Resources](#)
- [3 Related Posts](#)

Tip 10 Plotting Graphs And Adding Grids To The Background

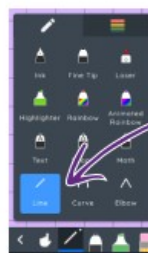


This will open another menu tab. From the menu tab select **Content**.



Then select **Backgrounds**. Choose the background you want and click and drag it onto your page.

4 From the toolbar at the bottom of the page double click on the **Pen** icon to open the menu tab.



Then click on the **Line** tool.



Change the colour of the grid lines.

Change the scale of the grid.

To select the colour and thickness of the line click on the coloured lines and select thickness and colour.



5 Using the pop up tool bar you can edit your grid.



5 You can now draw lines and move or edit them into position. In this instance I have drawn x and y axis lines.



6 Using the bottom toolbar, you can use one of the other pen tools to annotate your axis.



7 From the bottom toolbar, select the **Elbow** tool.

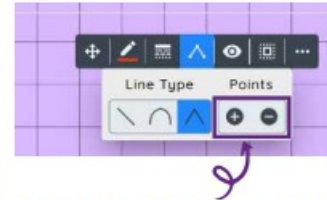
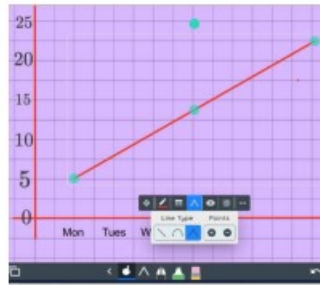


8 Draw a line on your graph. It will appear at first as a straight line. This is also the same if you chose the curve line.



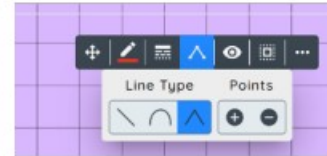
9 Using the **Finger Pointer** from the bottom tool bar select the line you created.

This time you will notice some green nodes and another floating tool bar.



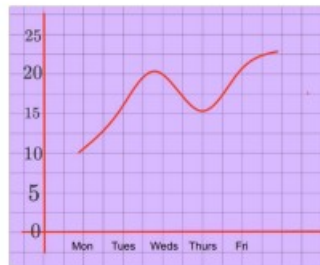
10 From the floating toolbar, select the **Line Type** icon. Another drop down menu will appear. You can then add or remove addition points.

11 Using the green nodes on the line you can manipulate the line to create your graph.

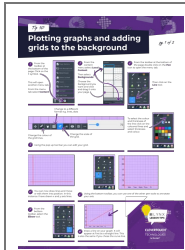


12 You can switch between the different line tools by selecting the line type and clicking on a different one.

13 Using the method above I can continue to add or remove additional points to manipulate the graph.



Documents / Resources



[Lynx Tip 10 Plotting Graphs And Adding Grids To The Background](#) [pdf] User Guide
Tip 10 Plotting Graphs And Adding Grids To The Background, Tip 10, Plotting Graphs And Adding Grids To The Background, Graphs And Adding Grids To The Background, Adding Grids To The Background, Grids To The Background, To The Background, The Background