

Ixnav LX9000 LX Sim High End Vario Navigation System User Manual

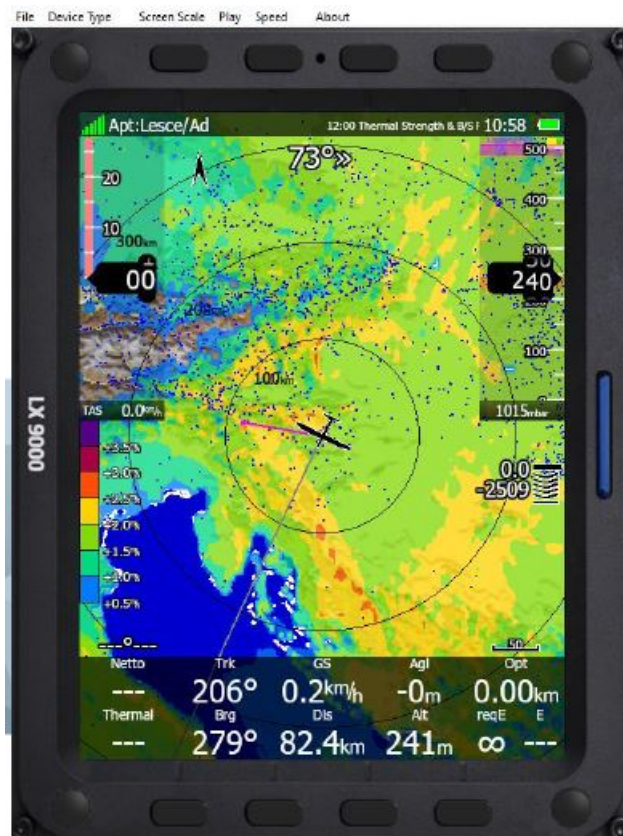
[Home](#) » [Ixnav](#) » Ixnav LX9000 LX Sim High End Vario Navigation System User Manual 

Contents

- [1 Ixnav LX9000 LX Sim High End Vario Navigation System](#)
- [2 Important Notices](#)
- [3 Introduction](#)
- [4 Getting Started](#)
- [5 Main Menu](#)
- [6 Revision History](#)
- [7 Documents / Resources](#)
 - [7.1 References](#)
- [8 Related Posts](#)



Ixnav LX9000 LX Sim High End Vario Navigation System



Important Notices

The LXNAV system is designed for VFR use only as an aid to prudent navigation. All information is presented for reference only. Terrain, airports and airspace data are provided only as an aid to situation awareness. Information in this document is subject to change without notice. LXNAV reserves the right to change or improve their products and to make changes in the content of this material without obligation to notify any person or organisation of such changes or improvements.

Introduction

What is LX Sim

LX Sim is a fully functional simulation tool for the Microsoft Windows operating system that allows you to experience the LX8000, LX8080, LX9000, LX9050 and LX9070 navigation systems on your personal computer. This release of the manual assumed that LX Sim 8.0 (or later) is being used. Within this manual the following symbols are used. A yellow triangle is shown for parts of the manual which should be read very carefully. A bulb icon is shown when useful hint is given to the reader.

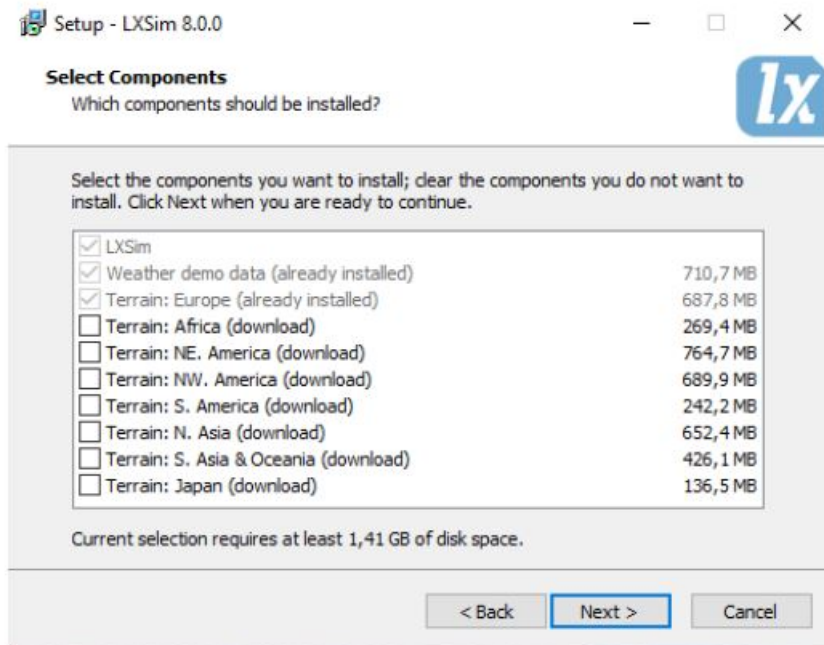
System Requirements

LX Sim is written for the Windows operating system. The minimum requirements are:

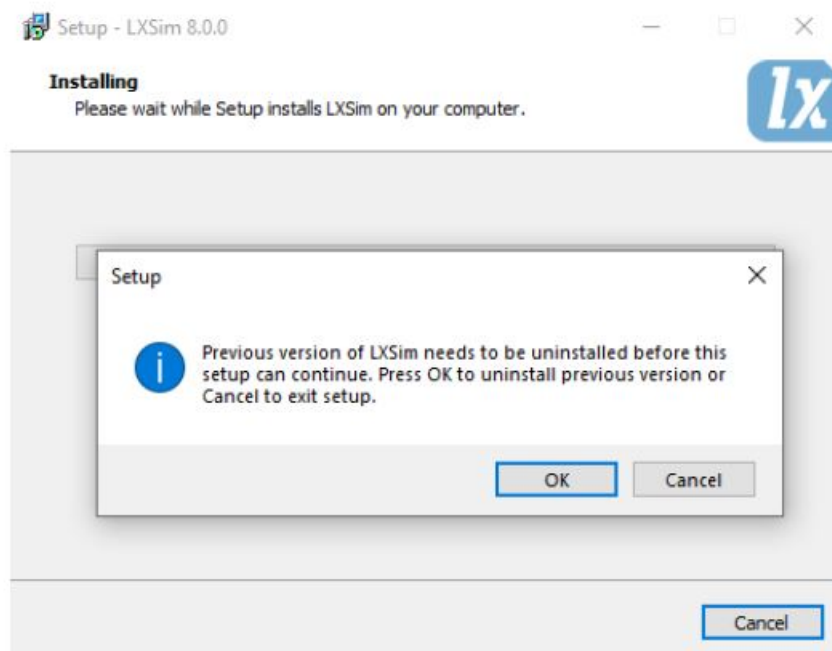
- Pentium processor
- Windows XP or higher
- .NET Framework 2.0
- 20 MB of free disk space

Installing and Uninstalling

Download the installation program from our webpage www.lxnav.com, run it and follow the on-screen instructions to complete the installation. These include the “Select Components” popup where you should select the appropriate Terrain for the flights you wish to playback.



This will be downloaded from LXNAV during the installation (example: the Terrain for Europe is currently 688 MB in size). If a previous version of LX Sim was installed, it will be removed during the installation process.



To uninstall the program, navigate to the uninstall icon in the LX Sim group and run it. You can also open the Control panel, select Add or Remove programs, locate the LX Sim line and press the Remove button.

Starting LX Sim

After successful installation a program group named LX Sim is created and an icon is placed on your desktop. Double click the icon to run LX Sim.

How to Contact LXNAV

In case you have difficulties understanding or running LX Sim or you discovered a bug, please send us an email to info@lxnav.com or call us +386 592 33 400. Visit our webpage regularly for free updates and new help files.

Getting Started

LX Sim Window

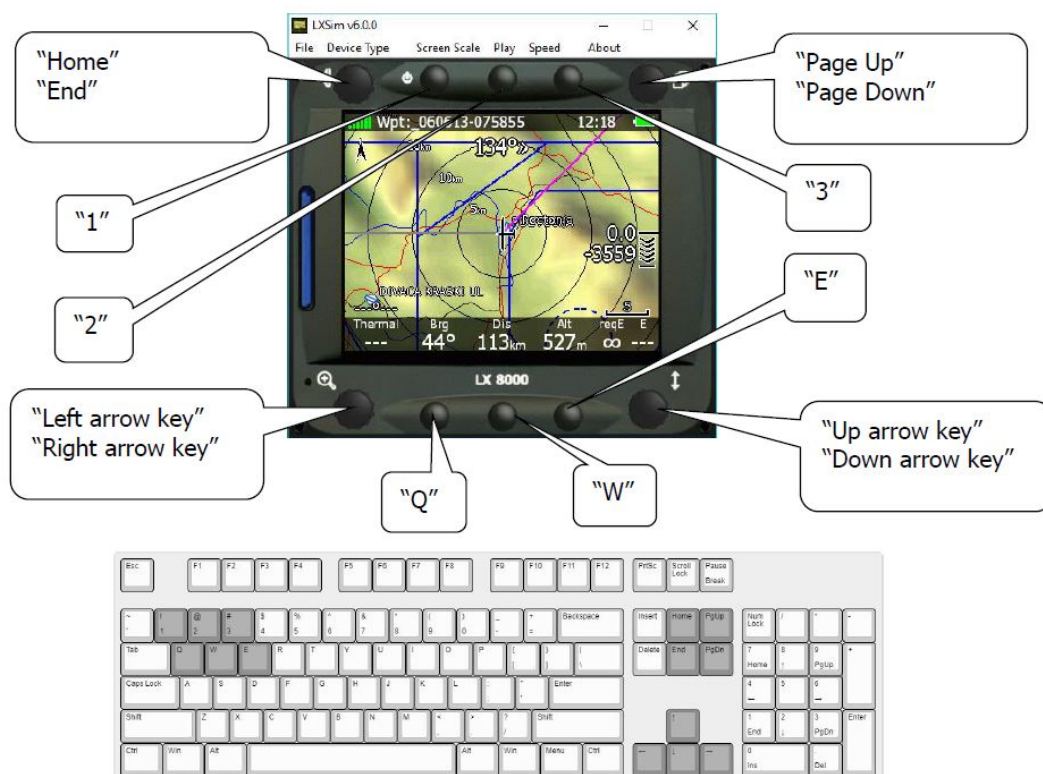
Once the program is started the main window will display with the interface of the LX9000 instrument. This instrument has full functionality and is controlled by clicking buttons and rotating knobs with your cursor as you would on the real device. You can also rotate knobs by hovering over them with cursor and scrolling up or down. Alternatively, you can use keyboard shortcuts as described in the next section. At the top of the window you will find a menu bar.

All controls and functions of the instrument are described in the LX80xx & LX90xx user manual that can be found on www.lxnav.com.

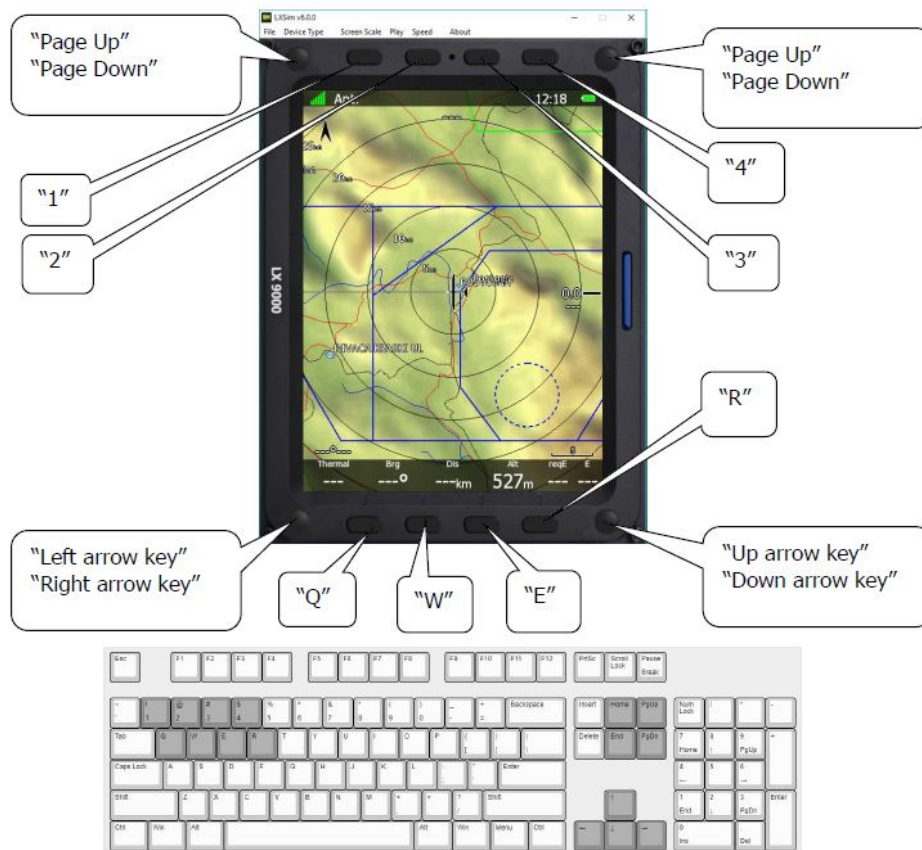
Keyboard Shortcuts

As mentioned above you can also control the instrument with keyboard shortcuts as shown in the illustration below

LX8000 and LX8080



LX9000, LX9050 and LX9070



Touch Option (LX9000, LX9050 and LX9070)

Use the mouse cursor and click on the icon/dialogue to simulate the touch option.



The touch option is enabled on the LX90xx series only.

Main Menu

File

By clicking Open you can load an .igc file from one of your previous flights. The program will restart and simulate that flight. Here you can also terminate the program by clicking Exit. You may also exit the program by pressing the Alt+F4 key combination.

Device Type

Here you can select the type of device that the program will simulate. You can choose between LX8000, LX8080, LX9000, LX9050 and LX9070. For the last three you can also select horizontal or vertical orientation.

Screen Scale

In this menu you can change the scale of your screen. Select preferred options on a scale from 10-100% (default is 100%). Use this function in case your monitor is too small to fit the full scale of the device screen.

Play

Start the simulation. The instrument will simulate a flight. If you have opened the .igc file as described above this will be the simulated flight. Click it will change to "Pause". Click it again, to un-pause the simulation.

Speed

Here you can change the speed of the simulation. The default value is 10x; it can be decreased to 1x (real time) or increased all the way up to 200x.

About

The about menu item displays information about the installed version of LX Sim.

SD Card

The SD Card function is used to transfer files to and from LX Sim just as you would do on the instrument. Click on the SD Card (market red below) to open a file browser. Then select the folder to import and export files to. You then can transfer files by going to Setup>Files and transfer. You can transfer airspaces, waypoints, tasks, airports, checklists, maps, flights, pilots and custom profiles. For more information about importing, activating and using files please refer to the LX80xx/90xx user manual.




With LX Sim you can also try out new customized styles that you can create manually on the instrument or simply use our LX Styler customization tool available on www.lxnav.com.

Revision History

Rev	Date	Comments
1	January 2018	Initial release of this manual
2	February 2018	Added Chapter 2 , 3 , updated Chapter 1 .
3	April 2018	Minor Changes
4	May 2018	Updated Chapter 4 (since removed).
5	March 2020	Corrections to English language text.
6	April 2020	Update for Version 8.0 including removal of the previous Chapter 4. Updated Chapter: 2.3 Added Chapter: 3.2.2.1
7	May 2021	Style update, Minor fixes

T: +386 592 334 00 | F: +386 599 335 22 | info@lxnav.com – www.lxnav.com

Documents / Resources

	<p>lxnav LX9000 LX Sim High End Vario Navigation System [pdf] User Manual LX9000, LX Sim, High End Vario Navigation System</p>
---	--

References

- [lx info@lxnav.com](mailto:info@lxnav.com)
- [lx LXNAV Gliding](#)
- [lx LXNAV Gliding](#)