



# Ixnav Flarm Speaker Instruction Manual

[Home](#) » [Ixnav](#) » Ixnav Flarm Speaker Instruction Manual 

## Contents

- [1 Ixnav Flarm Speaker](#)
- [2 Product Information](#)
- [3 Product Usage Instructions](#)
- [4 Limited Warranty](#)
- [5 Basic](#)
- [6 Device overview](#)
- [7 Wiring](#)
- [8 Installation](#)
- [9 Documents / Resources](#)
  - [9.1 References](#)
- [10 Related Posts](#)



**Ixnav Flarm Speaker**



## Product Information

### Specifications

- Power supply: 9-36V DC
- Communication: RS232
- Baudrate: 19200 (fixed)

### Product Usage Instructions

#### Packing Lists

- 1x Flarm Speaker
- 1x FV12\_PWR cable
- 1x FlarmView cable

### Description

The Flarm Speaker is an audio warning device for Flarm traffic messages. It is designed to be used with a Flarm device connected with an RJ12 cable. The Flarm Speaker requires an external power supply (9-36V) and communication connection with the Flarm device. When an alert message from Flarm is decoded, the device will produce an audible sound. The sound generated depends on the severity of the message (Alarm type).

The Flarm Speaker also features a phono output with a 3.5mm mono jack located in the top center at the back. The phono output is always enabled. The speaker can be turned off only when the phono jack is plugged in, and the slide switch is at AUTO position. The user can choose to override the phono jack detection by setting the slide switch to SPK.ON position, thus forcing the speaker to be permanently enabled.

### Installation

#### Wiring

Ensure proper wiring following the 12V Power Supply and Connection diagram provided in the manual.

## Connection Diagram

Refer to the connection diagram in the manual for detailed instructions on how to connect the Flarm Speaker to your Flarm device.

## Important Notices

Read all important notices in the manual carefully, especially those marked with a yellow triangle or a red triangle for critical procedures.

## FAQ

### 1. Q: How do I turn off the speaker?

A: The speaker can be turned off by plugging in the phono jack and setting the slide switch to AUTO position.

### 2. Q: What is the purpose of the Flarm Speaker?

A: The Flarm Speaker is an audio warning device for Flarm traffic messages, providing audible alerts based on message severity.

## Important Notices

Information in this document is subject to change without notice. LXNAV reserves the right to change or improve their products and to make changes in the content of this material without obligation to notify any person or organization of such changes or improvements.



A Yellow triangle is shown for parts of the manual which should be read very carefully and are important for operating the system.



Notes with a red triangle describe procedures which are critical and may result in loss of data or any other critical situation.



A bulb icon is shown when a useful hint is provided to the reader.

## Limited Warranty

This LXNAV product is warranted to be free from defects in materials or workmanship for two years from the date of purchase. Within this period, LXNAV will, at its sole discretion, repair or replace any components that fail in normal use. Such repairs or replacement will be made at no charge to the customer for parts and labour, provided that the customer shall be responsible for any transportation cost. This warranty does not cover failures due to abuse, misuse, accident, or unauthorised alterations or repairs.

THE WARRANTIES AND REMEDIES CONTAINED HEREIN ARE EXCLUSIVE AND IN LIEU OF ALL OTHER WARRANTIES EXPRESSED OR IMPLIED OR STATUTORY, INCLUDING ANY LIABILITY ARISING UNDER ANY WARRANTY OF MERCHANTABILITY OR FITNESS FOR A PARTICULAR PURPOSE, STATUTORY OR OTHERWISE. THIS WARRANTY GIVES YOU SPECIFIC LEGAL RIGHTS, WHICH MAY VARY FROM STATE TO STATE. IN NO EVENT SHALL LXNAV BE LIABLE FOR ANY INCIDENTAL, SPECIAL, INDIRECT OR CONSEQUENTIAL DAMAGES, WHETHER RESULTING FROM THE USE, MISUSE, OR INABILITY TO USE THIS PRODUCT OR FROM DEFECTS IN THE PRODUCT. Some states do not allow the exclusion of incidental or consequential damages, so the above limitations may not apply to you. LXNAV retains the exclusive right to repair or replace the unit or software, or to offer a full refund of the purchase price, at its sole discretion. SUCH REMEDY SHALL BE YOUR SOLE AND EXCLUSIVE REMEDY FOR ANY BREACH OF WARRANTY. To obtain warranty service, contact your local LXNAV dealer or contact LXNAV directly.

## Basic

## Packing Lists

- 1x Flarm Speaker
- 1x FV12\_PWR cable
- 1x FlarmView cable

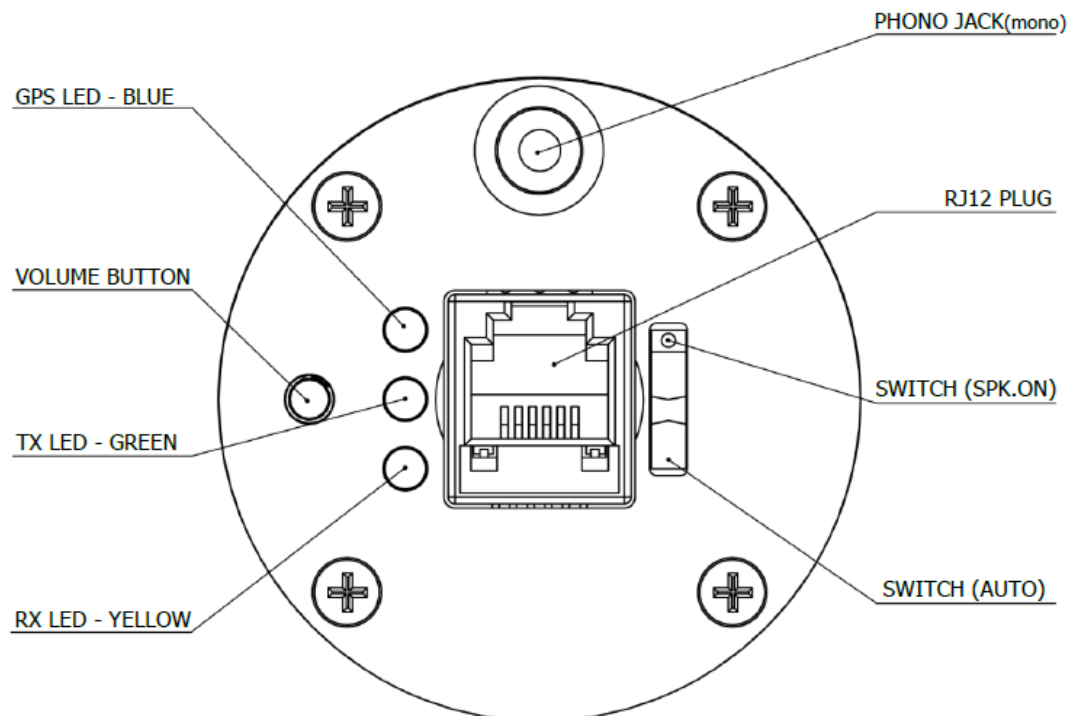
## Electrical characteristics

- Power supply: 9-36V DC
- Communication: RS232
- Baudrate: 19200 (fixed)

## Description

Flarm Speaker is an audio warning device for Flarm traffic messages. This device is designed to be used with Flarm device connected with RJ12 cable. Flarm Speaker needs external power supply (9-36V) and communication connection with Flarm device. When alert message from Flarm is decoded, device will make audible sound. Generated sound depends on message severity (Alarm type). Flarm Speaker also features phono output with 3.5mm mono jack located in the top center at the back. Phono output is always enabled. Speaker can be turned off only when phono jack is plugged in and slide switch is at AUTO position. User can also choose to override phono jack detection with slide switch at SPK.ON position thus force speaker to be permanently enabled. There are three volume adjustments available with push button on the back of the device. Communication statuses are also visible with three LEDs on the back.

## Device overview





## Wiring

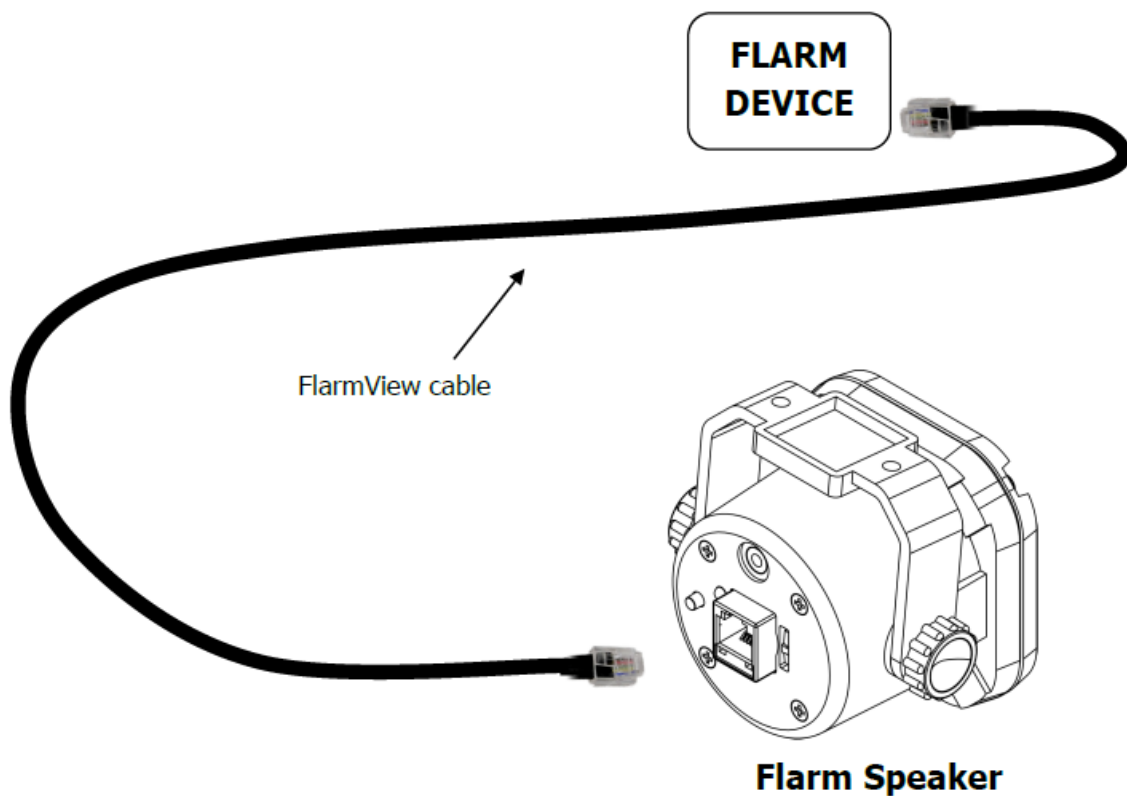
### 12V Power Supply

As Flarm Speaker consumes around 3W at 12V (when speaker active), there might be difficulties with power supply especially when using 3.3V power supply.

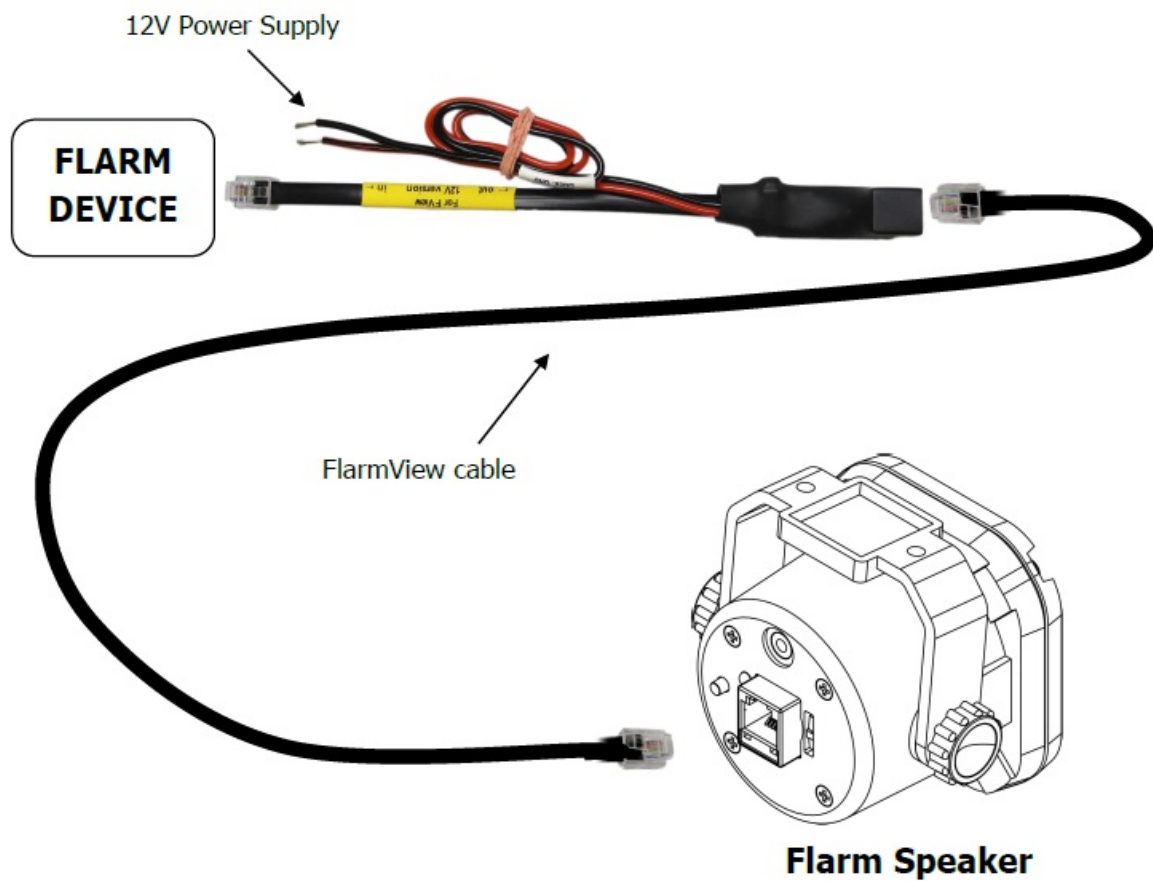
For that purpose LXNAV has developed an adapter cable (FV12\_PWR) which takes external 12V and enables it when there is 3.3V power from source device.

### Connection diagram

Normally Flarm speaker can be connected directly to the flarm via FlarmView cable.



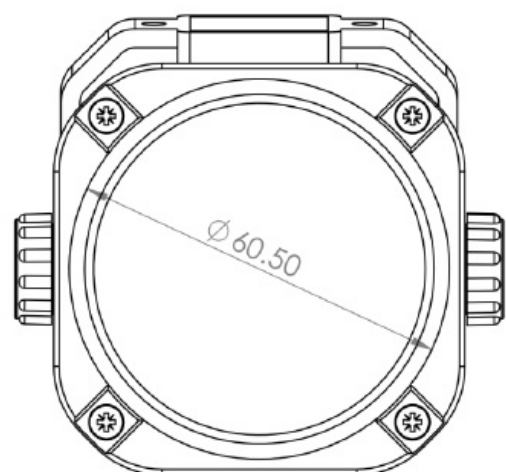
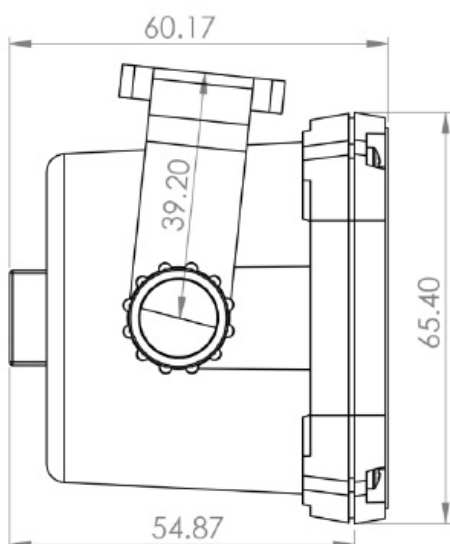
If the flarm can not provide 12volts, the following diagram represents how Flarm Speaker should be connected.

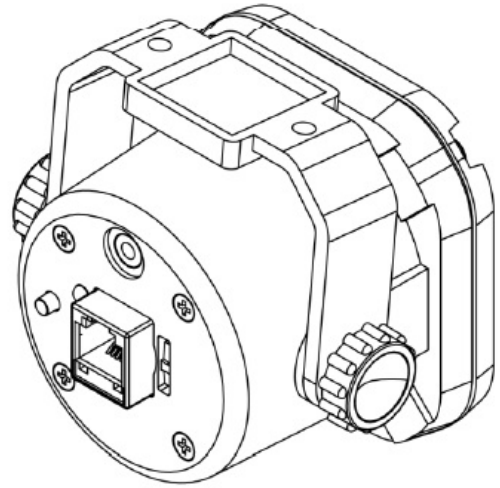
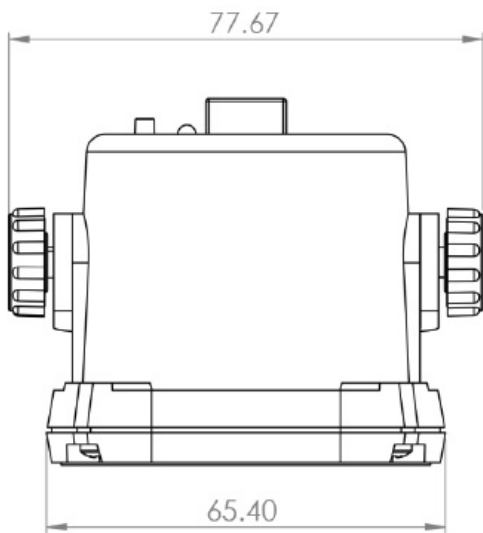


## Installation

Flarm speaker can be mounted as standard communications speaker utilizing its mounting bracket. Bracket should be fixed either with screw or with self-adhesive pad (both enclosed in the box with speaker).

## Dimensions





## Revision History


Rev	Date	Description
1	November 2017	Initial release of installation manual
2	January 2021	Style update
3.	May 2024	Updated Ch. <a href="#">3</a>

## LXNAV d.o.o.

Kidriceva 24, SI-3000 Celje, Slovenia

- T: +386 592 334 00
- F:+386 599 335 22
- [info@lxnav.com](mailto:info@lxnav.com)
- [www.lxnav.com](http://www.lxnav.com)

## Documents / Resources

	<a href="#">Lxnav Flarm Speaker</a> [pdf] Instruction Manual Flarm Speaker, Speaker
---	--

## References

- [Lx LXNAV Gliding](#)
- [User Manual](#)

### [Manuals+](#), [Privacy Policy](#)

This website is an independent publication and is neither affiliated with nor endorsed by any of the trademark owners. The "Bluetooth®" word mark and logos are registered trademarks owned by Bluetooth SIG, Inc. The "Wi-Fi®" word mark and logos are registered trademarks owned by the Wi-Fi Alliance. Any use of these marks on this website does not imply any affiliation with or endorsement.