

LXJTHT

**Android Auto
Wireless Adapter**



LXJTHT Android Auto Wireless Adapter User Manual

[Home](#) » [LXJTHT](#) » LXJTHT Android Auto Wireless Adapter User Manual 

Contents

- [1 LXJTHT Android Auto Wireless Adapter](#)
- [2 HOW TO USE](#)
- [3 PACKAGE LIST](#)
- [4 FAQs](#)
- [5 Documents / Resources](#)
 - [5.1 References](#)

LXJTHT

LXJTHT Android Auto Wireless Adapter



Please read the manual carefully before use Recommend keeping this manual for future reference.

COMPATIBILITY NOTE

- Please make sure your car supports wired Android Auto
- Required an Android smartphone that supports Android Auto function. HUAWEI NOT SUPPORT)
- Required Android 11 or higher of the Android operating system

How to confirm if your car has Android Auto function

Method 1: Connect your Android Smartphone to your car by USB-datae cable and see the Android Auto logo on your car display.



or



Method 2: Check the compatible list below or check with your car manufacturer to see if your car has this capability:

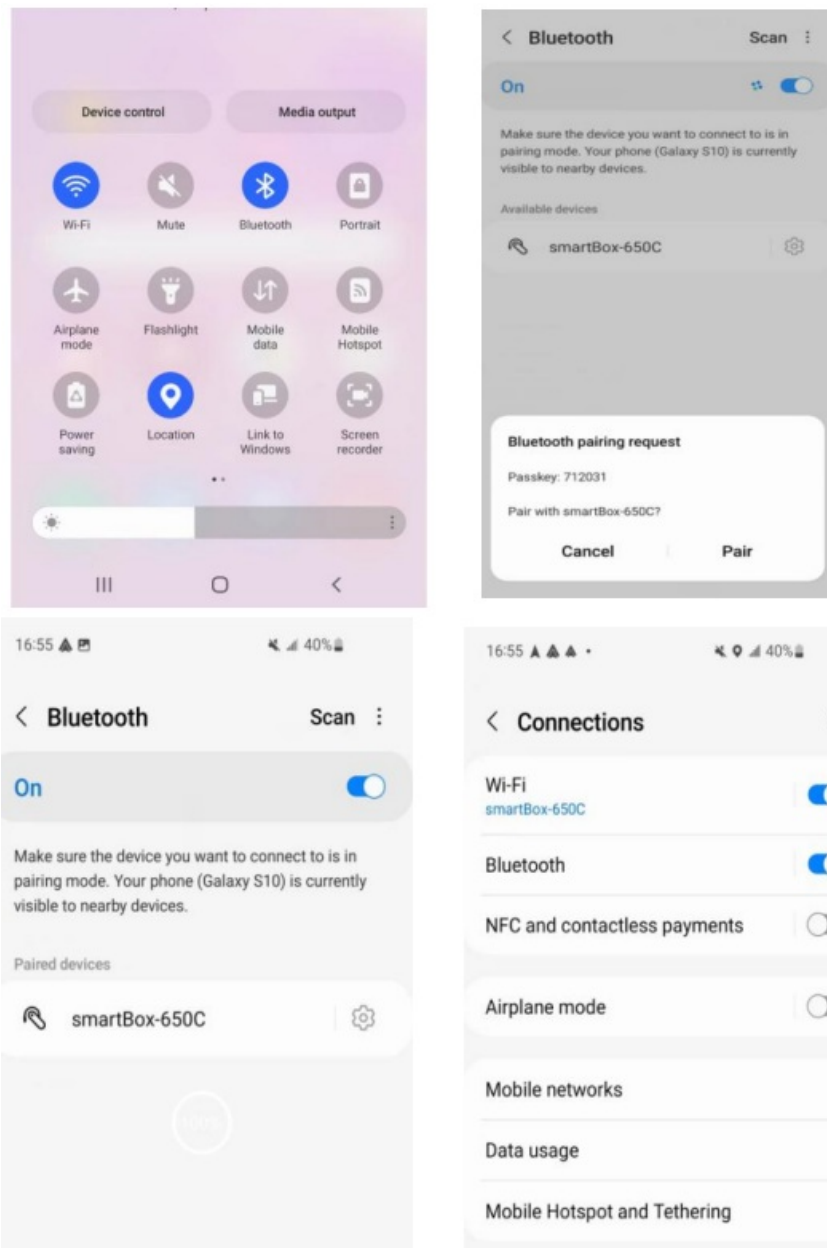
Look for the website for supported car models:

- <https://www.android.com/auto/compatibility/#compatibility-vehicles>



HOW TO USE

1. Start the car and wait for the car head unit system to be loaded
2. Connect the Wireless Android Auto adapter to the USB-A or USB-C port in your car. Please be sure to plug the adapter into the port that is for wired Android Auto.
3. Open WIFI and Bluetooth on your Android smartphone and find the Bluetooth named "SmartBox-****"; Click on 'Pair'; Click on 'Allow'; Click on 'Use Android Auto'



4. You are ready to enjoy your wireless Android Auto adapter.

PLEASE NOTE

1. The wireless Android Auto adapter working principle uses Bluetooth to establish a pairing between the Android smartphone and the vehicle, then switches to using WiFi to maintain the wireless connection. After the Bluetooth pairing is successful, the Android smartphone WiFi will automatically connect to the adapter's WiFi, and then disconnect the Adapter Bluetooth connection and automatically connect to your vehicle Bluetooth by default.
2. Please ensure the wireless Android auto Adapter power indicates blue light is on.
3. Please ensure that your car models support wired Android Auto

PACKAGE LIST

- 1 * Wireless Android Auto Adapter
- 1 * USB-A OR USB-C OTG Adapter
- 1 * 3M Sticker
- 1 * User Manuel

ONLINE UPDATE

- If the adapter works properly, it means the current version is suitable for your car. It is not recommended to update the firmware.
 - Only try this solution when the problem you cannot solve from the "FAQ" list
-
1. Power up the adapter
 2. Connect the adapter's WiFi, the password is "88888888"
 3. Open the web browser and enter "192.168.1.101" to enter the settings page.
 4. Click "Switch P2P" Then Click "OK"
 5. Return to WiFi Connect, Find the "Wi-Fi Direct" option, Then connect the Available devices (Android auto Bluetooth name)(This step is for reference only for Android phone users if use iPhone update the firmware, and please ignore the "Wi-Fi Direct step)
 6. Return to the browser's page, and Click "Update" (PS: the signal light will flash when it reaches 70%, and it will return to normal after successful)
 7. In the same page, you could also fill in the car brand, model, years, and more details, next tap "Submit" to report the issue. Our engineers will record your problem and research possible solutions.

192.168.1.101

System Version

Build Number22092318.1509.2

Settings

Unit TypeDefault (For Most CarPlay Units) >

Restore factory settings>

Problem Description

Car MakeE.g. Toyota

Model NameE.g. Camry XLE

YearE.g. 2020

Detailed description of the problem:

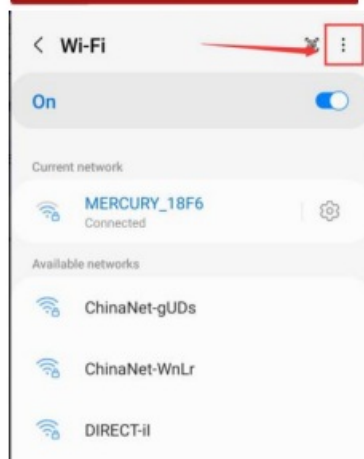
Please enter text here

Submit

Online Update

Checking for updates...

Switch P2P



Copyright©2020 - 2022

FAQs

What is the Wi-Fi password for the Wireless Android Auto Adapter ?

We need to connect the Bluetooth, not Wi-Fi. After Bluetooth matching is successful, WiFi will automatically connect. So no need Wi-Fi password. Make sure your Wi-Fi is turned on and unoccupied when pairing

After pairing Android Auto adapter, can not start or compatible/ can not recognize the USB....

If your car has used the Android Auto function for the first time, please use your data cable to connect your phone to activate Android Auto through a wired method Please make sure that Android Auto on your Android phone is the latest version. If not, please log in to your Google Play account to update to the latest version. Please turn off the Bluetooth of your phone and enter the mobile application management

to search auto to clear the auto cache. After the clear is completed, Restart the adapter and reconnect to Bluetooth

Audio input or output issues : calls rejected or forwarded to voicemail / no play sound / microphone not working / music playback interrupted or paused / voice functioning abnormally...

The indicator light of the adapter is still on after the car is turned off.

Because the car does not cut off all power immediately when it is turned off, the adapter's light will not go out immediately, it will stop flashing in a few minutes. Please rest assured that its power consumption is minimal and will not drain the car battery

When use the wireless Android Auto Adapter whether Mobile Phone can use other internet WiFi

When enjoying the wireless Android Auto adapter function, the phone's WiFi will be occupied by the adapter. So you can not use other internet at the same time. You only can use your phone SIM card internet.

Unable to automatically reconnect

Please make sure that the Bluetooth and Wifi functions of your mobile phone are turned on and the Bluetooth is not occupied when you get in the car Clear the pairing record, restart the phone and reconnect the adapter

Can the adapter be paired with multiple android Smartphones


The adapter can be paired with maximum five phones, but only one device can be connected at a time. If you would like to pair it with a new phone, please cancel the current connection first. Please note, by Bluetooth function default, the adapter's system will only auto-connect back to the last used phone.

Can't find the bluetooth and Wi-Fi of the Android Auto Adapter ?

Please make sure the wireless Android auto adapter power indicates blue light is on and Be sure to plug the adapter into the port that is for wired Android auto. If it's possible, please test it with another Android

Phone. If only a specific Android phone cannot find the Bluetooth or Wi-Fi of the adapter, please try to reset the network and Bluetooth settings of this Phone and then restart the phone once, if the same problem happens on other Android Phones, It will be defective, please let us know.

Documents / Resources

	<p>LXJTHT Android Auto Wireless Adapter [pdf] User Manual</p> <p>Android Auto Wireless Adapter, Auto Wireless Adapter, Wireless Adapter, Adapter</p>
---	--

References

- [Android](#) [Android Auto Compatibility](#) | [Android](#)
- [User Manual](#)

[Manuals+](#), [Privacy Policy](#)

This website is an independent publication and is neither affiliated with nor endorsed by any of the trademark owners. The "Bluetooth®" word mark and logos are registered trademarks owned by Bluetooth SIG, Inc. The "Wi-Fi®" word mark and logos are registered trademarks owned by the Wi-Fi Alliance. Any use of these marks on this website does not imply any affiliation with or endorsement.