



**D01 Short Video
Remote Controller
and Self Timer**



LUUX D01 Short Video Remote Controller and Self Timer User Manual

[Home](#) » [LUUX](#) » LUUX D01 Short Video Remote Controller and Self Timer User Manual 

Contents

- [1 LUUX D01 Short Video Remote Controller and Self Timer](#)
- [2 Product Usage Instructions](#)
- [3 FAQ](#)
- [4 Packing List](#)
- [5 Use Diagrams](#)
- [6 Power on](#)
- [7 Power off](#)
- [8 Pairing](#)
- [9 Connect a mobile phone](#)
- [10 Key Function](#)
- [11 Take Pictures and Record Videos](#)
- [12 Low battery alarm](#)
- [13 Charging Diagram](#)
- [14 Automatic shutdown function](#)
- [15 About iPhone](#)
- [16 Specification Parameter](#)
- [17 FCC STATEMENT](#)
- [18 Documents / Resources](#)
 - [18.1 References](#)
- [19 Related Posts](#)



**Specifications:**

- Double-click: Video swipe right
- Long press for one second and let go: Lock screen
- Double-click: Video swipe left
- Short press the middle button to focus
- Supports original camera and various beauty cameras for photos and videos
- For TikTok short videos, long press button to adjust background music volume
- Requires iOS software version above 14.8 for Apple mobile phones
- Approximate charging time: About 1 hour
- Approximate usage time: About 1.5 hours

Product Usage Instructions**Power On/Off:**

In the Power on state, press and hold the key for about 5 seconds to turn on the device. To turn off, repeat the same process.

Camera Controls:

- To take a photo: Double-click the button
- To start/stop video recording: Long press the button for about 2 seconds
- To switch between front and back camera: Swipe left or right after double-clicking the button

Adjustments:

To adjust the volume of background music during TikTok video recording, long press the button. Note that this feature is not available for regular photography or video recording.

Troubleshooting:

If touch function is not responsive, ensure that your phone's software is up to date. If issues persist, restart your phone and try again.

FAQ

Q: What should I do if I can't control the video after enabling touch function?

A: If you are unable to control the video, please restart your phone and try again. Ensure your phone's software is updated as well.

Short video remote controller & Self-timer

Bluetooth Wireless Connection

Packing List



Charging box



Controller



Type-C charging cable



Instructions

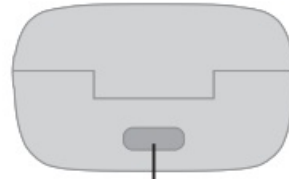


Storage bag

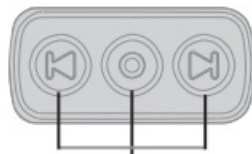
Use Diagrams



LED indicator



Type-C charging port

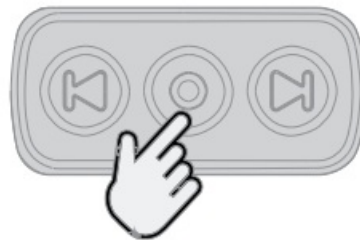


Key indication

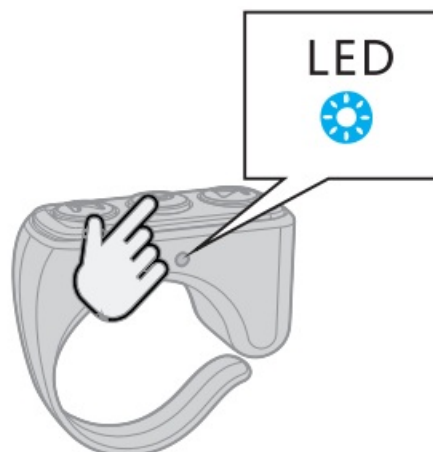


Charging port indication

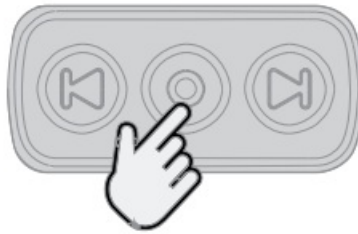
Power on



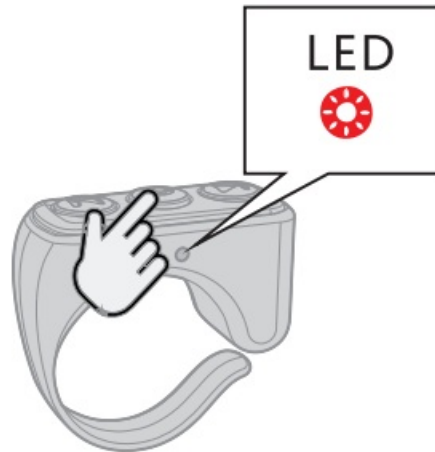
In the Power on state, press and hold the middle key for one second, the blue light will come on



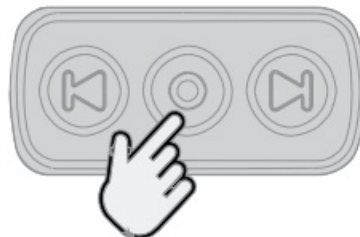
Power off



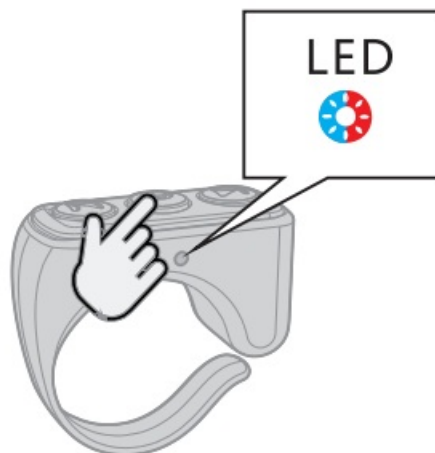
In the Power on state, press and hold the key for about 5 seconds, the red light will be on



Pairing

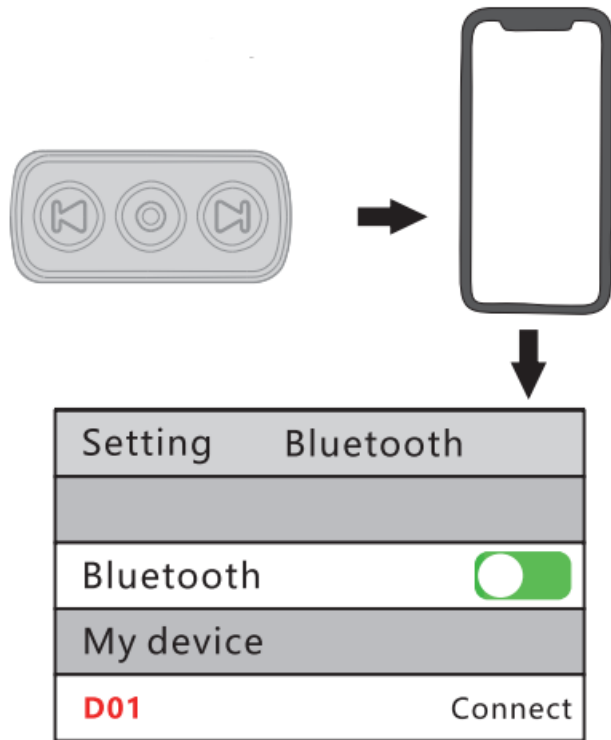


When in the Power off, press and hold the middle key for a long time for one second the red and blue lights flash alternately (or when the phone is disconnected)



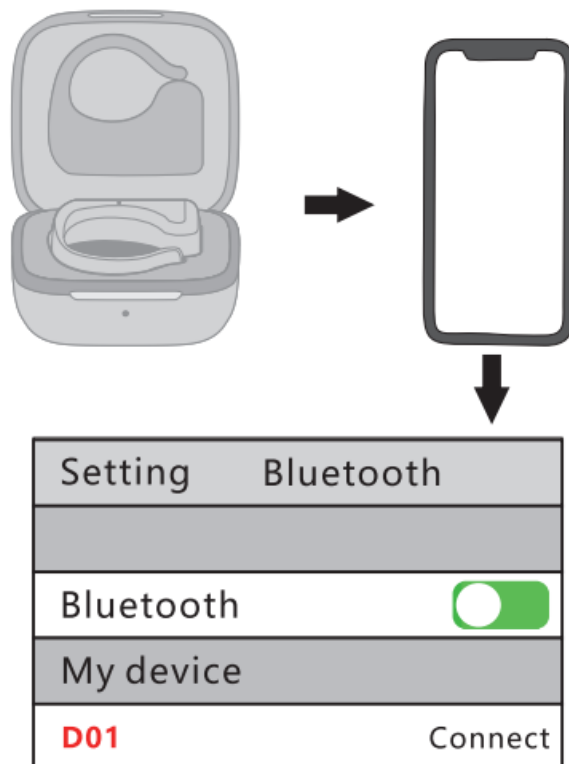
Connect a mobile phone

Mode 1: Manual Connection



In the power off state, press and hold the middle key of the controller for one second, the red and blue lights flash alternately. The controller is in the pairing state. At this time, turn on the Bluetooth of the mobile phone and search for the device. The Bluetooth menu shows: D01 and click, and complete the Bluetooth connection of the mobile phone and the controller until the connection is completed.

Mode2: Automatic Connection

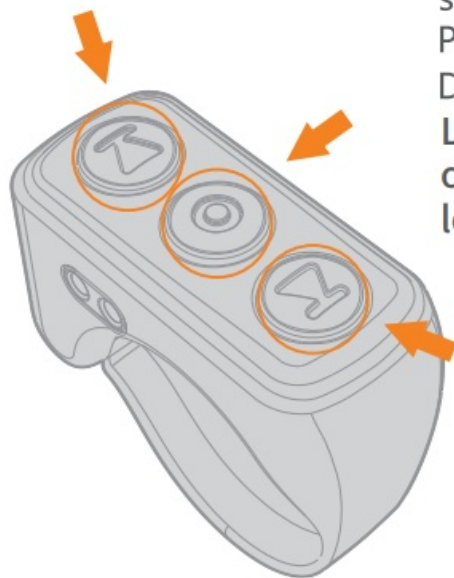


After power on, the controller automatically connects the last connected mobile phone (ensure that the Bluetooth of the mobile phone is turned on).

Key Function

- Double-click: Video swipe right
 - Press shortly: Previous video
 - Press and hold: Volume-
- Press and hold for one second: Power on
 - Press shortly: Pause
 - Double-click: Like
 - Long press for one second and let go: Lock screen
- Press shortly:
 - Next video
 - Press and hold: Volume +
 - Double -click: Video swipe left

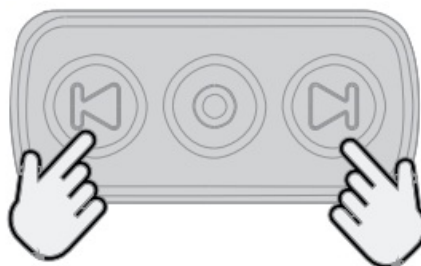
Double-click: Video swipe right
 Press shortly: Previous video
 Press and hold: Volume-



Press and hold for one second: Power on
 Press shortly: Pause
 Double-click: Like
 Long press for one second and let go: Lock screen

Press shortly: Next video
 Press and hold: Volume +
 Double -click: Video swipe left

Take Pictures and Record Videos



1. In photo or video recording mode, press any One of these two keys for 2 seconds take a photo or start recording video and end recording video
2. Short press the middle button to focus Be careful: 1. Support the original camera and various beauty cameras

to take photos and record videos

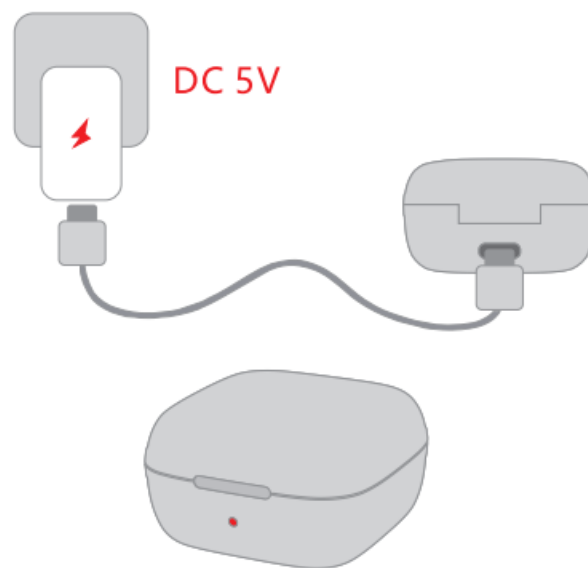
3. For TikTok short videos, long press the button to adjust the volume of background music, so photographing and video recording are not supported



Low battery alarm

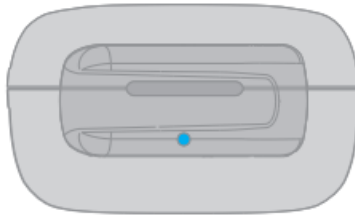
1. Controller were higher warnes the cy trollies e that charging is needed
2. Charging box Masee theo chy rong heats tow, the bling light needed



Charging Diagram

Charging box charging



	
Charging	Fully charged
Red light lighting	The red light goes out



	
Charging	Fully charged
Blue light lighting	The blue light goes out

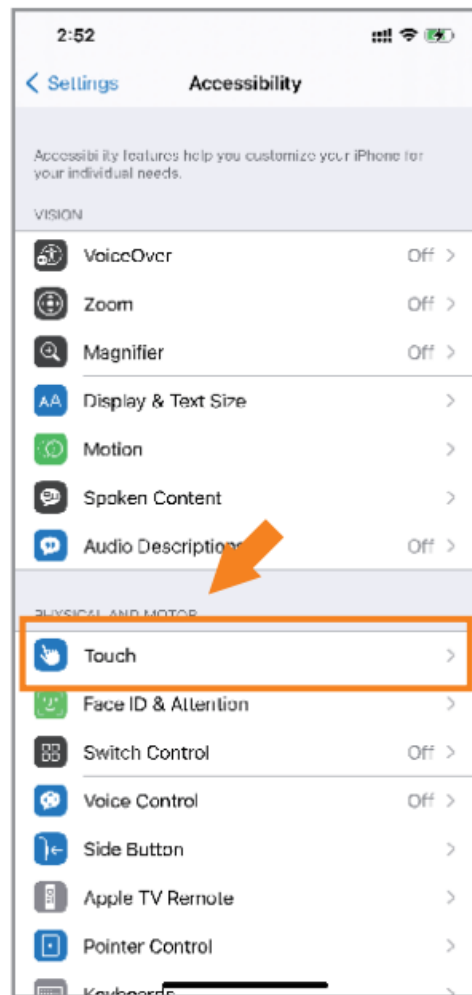
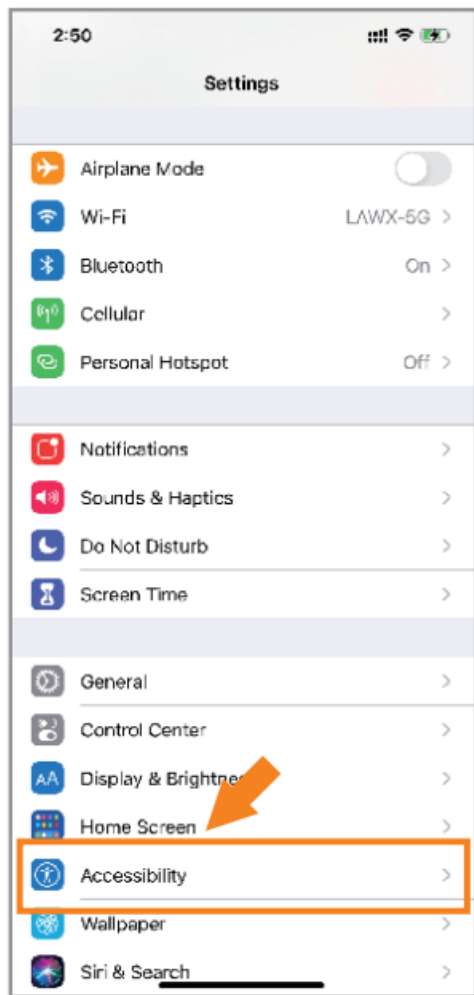
Automatic shutdown function

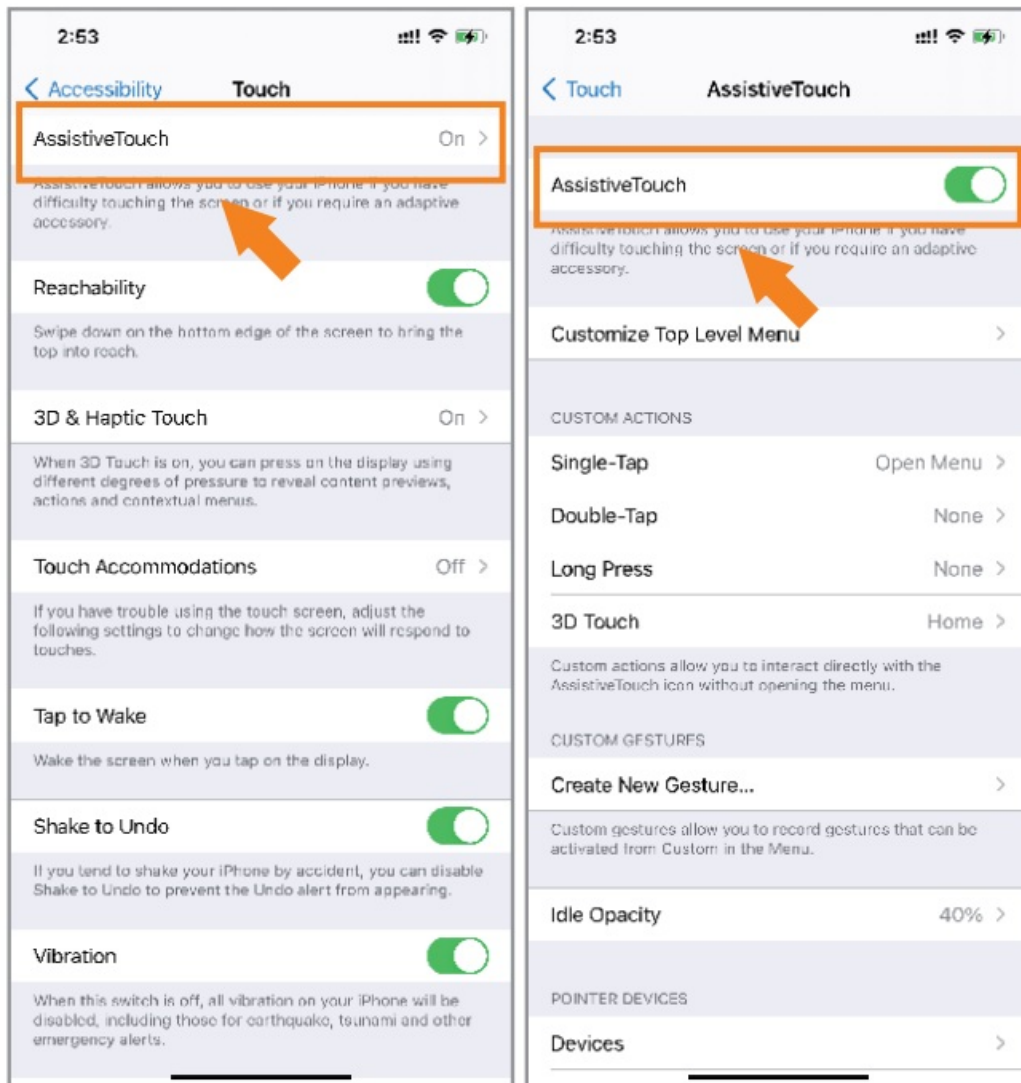
1. If normal pairing or pairing enabled by the mobile phone is not connected within 5 minutes, it will automatically shut down
2. If there is no operation after pressing the button for 30 minutes, it will shut down automatically

About iPhone

Special reminder about the use of iPhone:

1. Turn on iPhone Setting-Accessibility-Touch- AccessibilityTouch Setting to Open
See the picture below:





Be careful:

1. Make sure the IOS software of Apple mobile phone is above 14.8
2. If you still can't control the video after the touch function is turned on, please restart the phone

Until the following illustration appears



Specification Parameter

Controller	
Bluetooth version	Ver.5.0
Transmit power	classII(-6dBm~+4dBm)
Frequency (Hz)	2.40GHz~2.48GHz
Bluetooth name	D01
Password	0000
Distance	10 meters
Battery capacity	25mAH
Charging time	About 1 hours
Charging box	
Battery capacity	200mAH
Charging time	About 1.5 hours

Note: This product is a patented product. Counterfeiting must be investigated!

FCC STATEMENT

This device complies with Part 15 of the FCC Rules. Operation is subject to the following two conditions:

1. this device may not cause harmful interference, and
2. this device must accept any interference received, including interference that may cause undesired operation.

Changes or modifications to this unit not expressly approved by the party responsible for compliance could void the user's authority to operate the equipment.

NOTE: This equipment has been tested and found to comply with the limits for a Class B digital device, pursuant to Part 15 of the FCC Rules. These limits are designed to provide reasonable protection against harmful

interference in a residential installation.

This equipment generates uses and can radiate radio frequency energy and, if not installed and used in accordance with the instructions, may cause harmful interference to radio communications. However, there is no guarantee that interference will not occur in a particular installation. If this equipment does cause harmful interference to radio or television reception, which can be determined by turning the equipment off and on, the user is encouraged to try to correct the interference by one or more of the following measures:


- Reorient or relocate the receiving antenna.
- Increase the separation between the equipment and the receiver.
- Connect the equipment into an outlet on a circuit different from that to which the receiver is connected.
- Consult the dealer or an experienced radio/TV technician for help.

This device and its antenna(s) must not be co-located or operated in conjunction with any other antenna or transmitter.

Radiation Exposure Statement

The device has been evaluated to meet general RF exposure requirements in portable exposure conditions without restriction.

Documents / Resources

	LUUX D01 Short Video Remote Controller and Self Timer [pdf] User Manual 2A66I-D03, 2A66ID03, D03, D01 Short Video Remote Controller and Self Timer, D01, Short Video Remote Controller and Self Timer, Video Remote Controller and Self Timer, Remote Controller and Self Timer, Controller and Self Timer, Self Timer, Timer
---	--

References

- [User Manual](#)

[Manuals+](#), [Privacy Policy](#)

This website is an independent publication and is neither affiliated with nor endorsed by any of the trademark owners. The "Bluetooth®" word mark and logos are registered trademarks owned by Bluetooth SIG, Inc. The "Wi-Fi®" word mark and logos are registered trademarks owned by the Wi-Fi Alliance. Any use of these marks on this website does not imply any affiliation with or endorsement.