



LUTRON STCL-153P LED+ Dimmer Installation Guide

[Home](#) » [Lutron](#) » LUTRON STCL-153P LED+ Dimmer Installation Guide 



Contents

- [1 Quick Install Guide LED+ Dimmer 120 V~ 60 Hz](#)
- [2 Ganging and Derating](#)
- [3 Important Notes](#)
- [4 INSTALL WITH CONFIDENCE](#)
- [5 Disconnect Power](#)
- [6 Single Pole](#)
- [7 3-Way \(dimmer will not work in a 4-way application\)](#)
- [8 AFTER INSTALLATION: Adjust low-end dimming range for LEDs/CFLs](#)
- [9 Documents / Resources](#)
- [10 Related Posts](#)

Quick Install Guide LED+ Dimmer 120 V~ 60 Hz

How-to videos



<http://lutron.com/SunnataWiring>

Install with confidence

Use included diagrams or visit our website for step-by-step instructions.

Find the right LED



<http://www.lutron.com/ledfinder>

STCL-153P

150 W

600 W *

LED / CFL

Incand. / Halogen

Please read before installing

FCC Supplier Declaration of Conformity / IC: This device complies with part 15 of the FCC Rules. Operation is subject to the following two conditions:

- (1) This device may not cause interference, and
 - (2) this device must accept any interference, including interference that may cause undesired operation.
- CAN ICES-5 (B)/NMB-5(B)

Ganging and Derating

Derating is necessary if mounting two or more devices side by side (see chart for new wattage rating).

Note: Derating not necessary for LED / CFL loads.

*Maximum Allowable Inc./Hal. Wattage		
Single Gang	End of Gang	Middle of Gang
600 W	500 W	400 W

Important Notes

1. CAUTION: Use only with permanently installed fixtures with dimmable screw-in compact fluorescent, dimmable screw-in LED, halogen, or incandescent lamps. To avoid overheating and possible damage to other equipment, do not use to control receptacles, motor-driven appliances, or transformer-supplied appliances.
2. Install in accordance with all national and local electrical codes.
3. When no "grounding means" exists in-wall box, the National Electrical Code (NEC®) allows a control to be installed as a replacement when a plastic faceplate with plastic fasteners is used, or the circuit is protected by a ground fault circuit interrupter (GFCI). Lutron wallplates meet this requirement. Cap or remove the green wire before screwing control into the wall box.

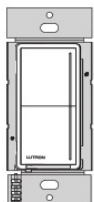
4. Protect the dimmer from dust and dirt when painting or spackling the wall.
5. It is normal for the dimmer to feel warm to the touch during operation.
6. Clean the dimmer with a soft damp cloth only. Do not use any chemical cleaners.
7. For indoor use only.

INSTALL WITH CONFIDENCE

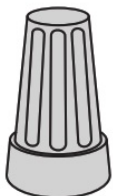


lutron.com/SunnataWiring

Included Parts



Dimmer



Wire Nut
Yellow (x4)
Blue (x1)



Screws (x2)



Jumper Wire
(only needed for
3-way Wiring)

Disconnect Power

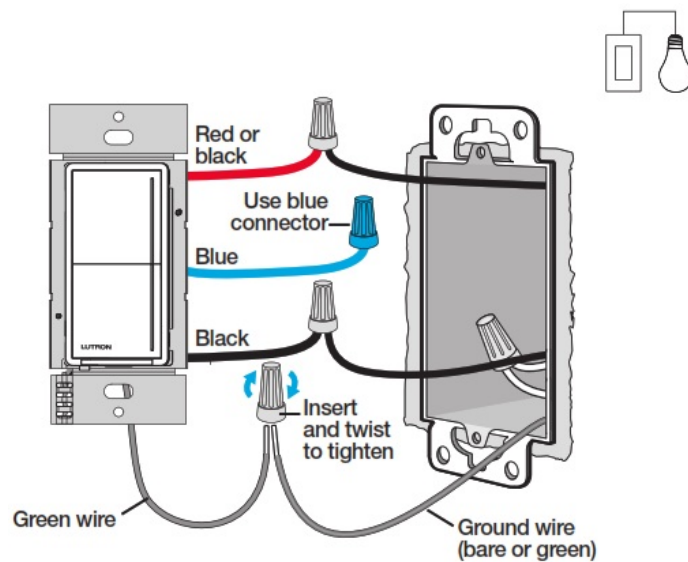


WARNING: SHOCK HAZARD. May result in serious injury or death. Turn off power at the circuit breaker or fuse before installing.



Single Pole

For lights switched from **one** location



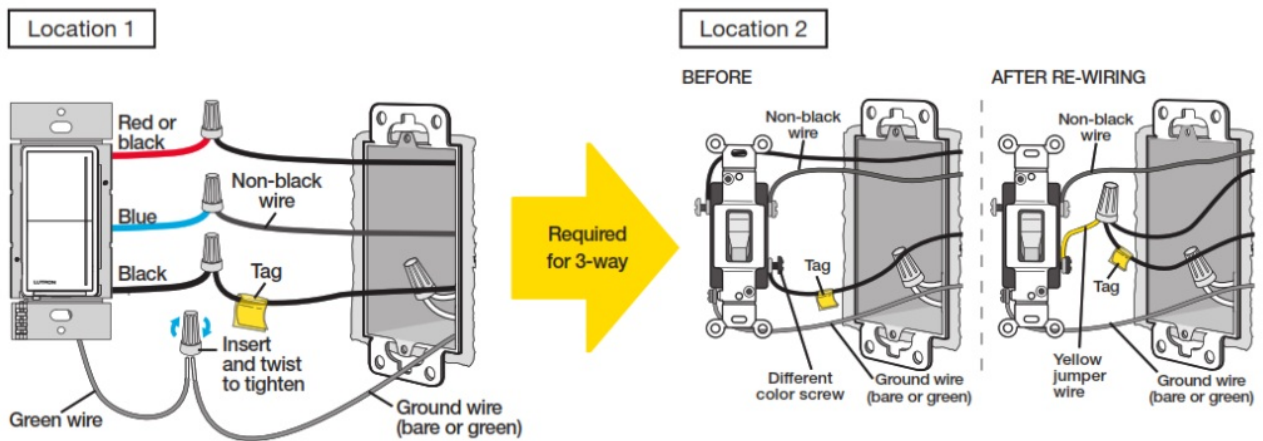
NOTE: For single-pole, red and black wires on a dimmer are interchangeable.

3-Way (dimmer will not work in a 4-way application)

For lights switched from **two** locations:

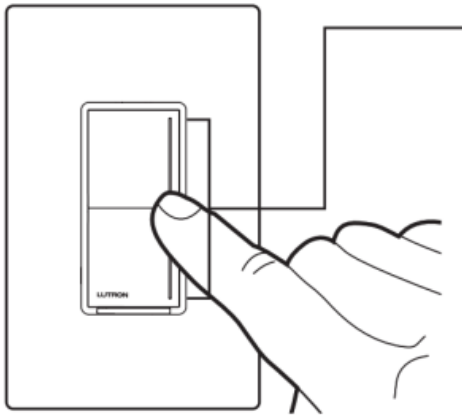
IMPORTANT: Before removing the old switch, mark or tag the common wire (connected to the different colored screw)

QUESTIONS? See lutron.com/SunnataWiring



NOTE: Only one dimmer can be used in a 3-way circuit.

AFTER INSTALLATION: Adjust low-end dimming range for LEDs/CFLs



1. Touch the middle of the lightbar for about 6 seconds until the light bar starts flashing.
2. Slide a finger up or down on the light bar to adjust the desired brightness.
3. Tap the OFF button to exit.

Optional: MyLevel Personalization

Visit lutron.com/SunnataMyLevel to learn how to adjust:

- High-end dimming range
- Preset light level
- Lightbar brightness
- Nightlight / Light level indicator

Limited Warranty:

www.lutron.com/TechnicalDocumentLibrary/369-119_Wallbox_Warranty.pdf

©2019-2021 Lutron Electronics Co., Inc. Lutron and LED+ are trademarks or registered trademarks of Lutron Electronics Co., Inc., in the U.S. and other countries. The YouTube icon is a trademark of Google LLC.

P/N 0302021 REV A



Receive an Extended Warranty: www.lutron.com/SunnataSurvey
 Support: 1.844.LUTRON1 (USA / Canada) +1.888.235.2910 (Mexico)

Documents / Resources

	<p>LUTRON STCL-153P LED+ Dimmer [pdf] Installation Guide STCL-153P, LED Dimmer</p>
--	---