



LUTRON RR-PROC3-KIT RadioRA 3 Demo Kit System and App Programming Instructions

[Home](#) » [Lutron](#) » LUTRON RR-PROC3-KIT RadioRA 3 Demo Kit System and App Programming Instructions 

LUTRON

Application Note #815
RadioRA 3 Demo Kit System and App Programming

Contents

- [1 RR-PROC3-KIT RadioRA 3 Demo Kit System and App Programming](#)
- [2 Documents / Resources](#)
 - [2.1 References](#)

RR-PROC3-KIT RadioRA 3 Demo Kit System and App Programming

How to add a processor to a RadioRA 3 demo kit for demonstration of system and app-based control

This application note is intended to provide guidance for programming a full-system demo kit using a RadioRA 3 demo kit and a RadioRA 3 processor. System programming is achieved by using Lutron Designer software and the PRO Installer mode of the Lutron app.

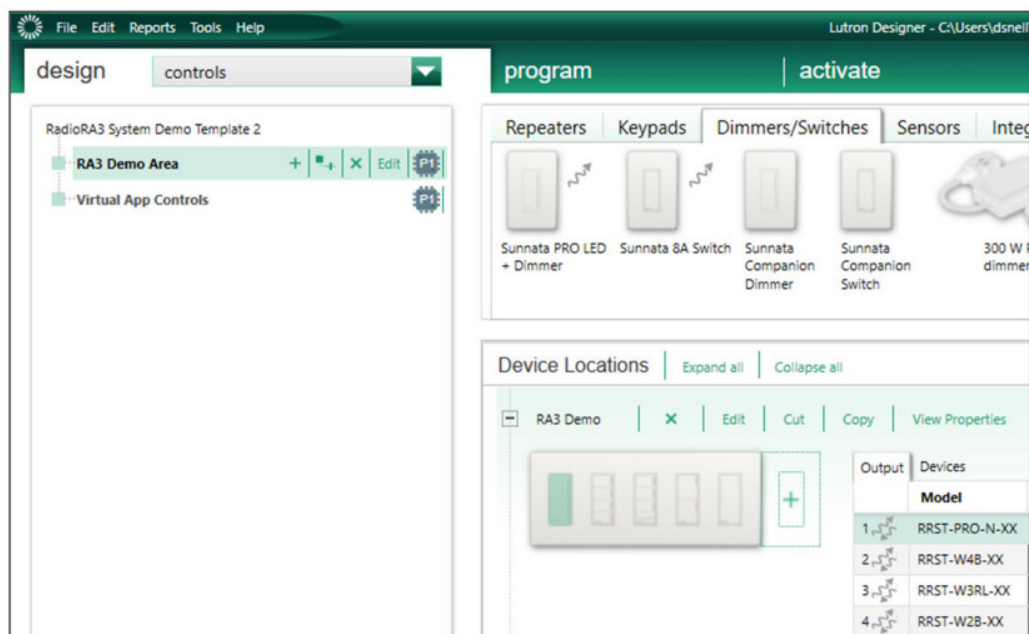
Adding a RadioRA 3 processor and creating a full-system demonstration tool To add a RadioRA 3 processor and create a full-system demonstration tool, the following is needed:

- A RadioRA 3 processor; RR-PROC3-KIT recommended
- An active, hardwired internet connection
- Access to the RadioRA 3 software
- An active myLutron account and the Lutron app

* **Note:** A hardwired internet connection is required for any cloud-based functions, including programming and control from the Lutron app.

1. Create a new RadioRA 3 project file for your system demo using the Lutron Designer software. Add the following devices, present in the demo kit, to your project file:
 - a. One “Sunnata PRO LED+ Dimmer”
 - b. One “RF Sunnata 4-Button Keypad”
 - c. One “RF Sunnata 3-Button Keypad with Raise/Lower”
 - d. One “RF Sunnata 2-Button Keypad”
 - e. One “Sunnata Companion Switch”
2. Add the desired programming to all devices. Once programming is added, begin activating the devices as they would be activated in any RadioRA 3 system. Once all devices have been activated and programming is transferred, then the RadioRA 3 demo kit is ready to be used to demonstrate system operation, including any Lutron app controls.

For more information about adding and programming devices in the Lutron Designer software, see online training modules “Software Design – Add Controls & Equipment (OVW 753)”, and “Software Programming – Keypads (OVW 755)”.



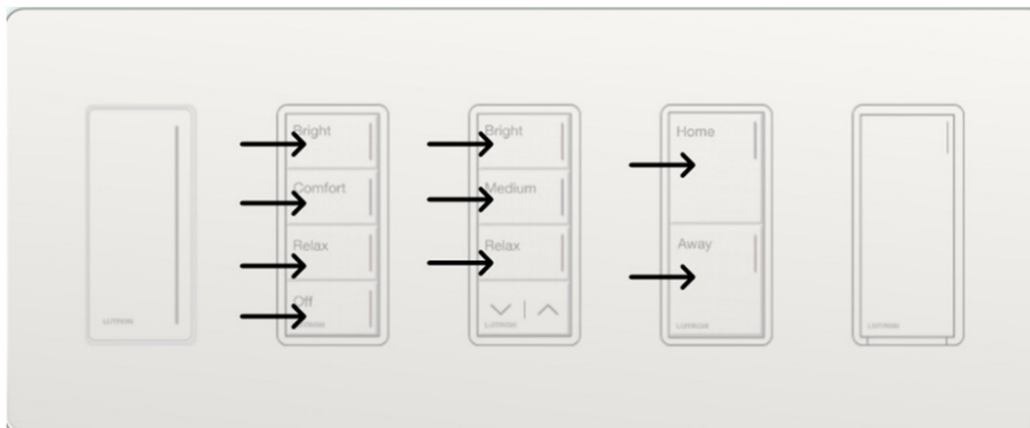
Example of demo devices ganged together in the RadioRA 3 software

Note: Once activated within a RadioRA 3 system, the demo kit devices will no longer behave in demo mode, and they will need to be within wireless range of their respective RadioRA 3 processor for proper system functionality.

Returning the demo kit to standalone operation

Note: If demo kit devices are to be removed from the RadioRA 3 system and returned to use as a standalone demo, follow these steps:

1. Devices must first be reset to the factory settings.
2. For keypads, press and hold the main 2, 3, or 4 buttons on the keypad simultaneously, as shown below. Continue to hold the buttons for about 15 seconds, then release.
3. The keypad should now be back in “demo mode”. Simply test demo mode by pressing the keypad buttons.



Note: “Demo mode” does not apply to the Sunnata PRO LED+ Dimmer and the accompanying companion switch. These devices will behave normally once they are deactivated.

Note: Depending on the type of lamp used in the kit, the dimmer may require manual adjustment to achieve optimum dimming characteristics following factory reset of the device. If dimming issues are noted, follow the steps in the dimmer’s installation instructions for “Setup for use WITHOUT a system” to adjust low-end trim, and/or phase dimming mode (forward-phase vs. reverse-phase) as required.

Lutron, RadioRA, and Sunnata are trademarks or registered trademarks of Lutron Electronics Co., Inc. in the US and/or other countries.

Lutron Contact Numbers

<p>WORLD HEADQUARTERS: USA Lutron Electronics Co., Inc. 7200 Suter Road Coopersburg, PA 18036-1299 TEL: +1.610.282.3800 FAX: +1.610.282.1243 support@lutron.com www.lutron.com/support North & South America Customer Assistance USA, Canada, Caribbean: 1.844.LUTRON1 (1.844.588.7661) Mexico: +1.888.235.2910 Central/South America: +1.610.282.6701</p>	<p>UK AND EUROPE: Lutro n EA Limited 125 Finsbury Pavement 4th floor, London EC2A 1N Q United Kingdom TEL: +44.(0)20.7702.0657 FAX: +44.(0)20.7480.6899 FREEPHONE (UK): 0800. 282.107 Technical Support: +44.(0) 20.7680.4481 lutronlondon@lutron.co m</p>	<p>ASIA: Lutron GL Ltd. 390 Havelock Road #07-04 King’s Centre Singapore 169662 TEL: +65.6220.4666 FAX: +65.6220.4333 Technical Support: 800.120.4491 lutronsea@lutron.com Asia Technical Hotlines Northern China: 10.800.712.1536 Southern China: 10.800.120.1536 Hong Kong: 800.901.849 Indonesia: 001.803.011.3994 Japan: +81.3.5575.8411 Macau: 0800.401 Taiwan: 00.801.137.737 Thailand: 001.800.120.665853 Other Countries: +65.6220.4666</p>
---	---	--

LUTRON

Customer Assistance — 1.844.LUTRON1

Lutron Electronics Co., Inc.

7200 Suter Road

Coopersburg, PA 18036-1299 U.S.A.

P/N 048815 Rev. A 02/2023

Documents / Resources

