



# LUTRON RR-PROC3-KIT All-in-One Processor Kit User Guide

[Home](#) » [Lutron](#) » LUTRON RR-PROC3-KIT All-in-One Processor Kit User Guide 

LUTRON RR-PROC3-KIT All-in-One  
Processor Kit User Guide

## RadioRA 3 | Product Reference Guide

RadioRA 3 was developed to work in any residence, new or existing. Easily install keypads, sensors, light, fan, temperature, and appliance controls, as well as shades to create a system that will best suit your needs. And you don't have to worry about the type of lighting in the home, either. Whether you have LED, halogen, incandescent, electronic low-voltage, magnetic low-voltage, or fluorescent lights, RadioRA 3 will provide the control you need.

### Behind the scenes



## Processor

RR-PROC3-KIT

(includes PoE injector, shelf mount, and ethernet cables)

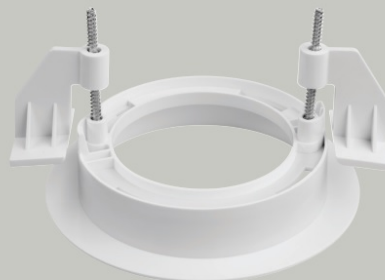
RR-PROC3-CW

(includes ceiling and wall mounts)



## Shelf Mount

L-SMNT-WH



## Ceiling Mount

L-CMNT-WH



## JBOX Wall Mount

L-JMNT-WH



## Wireless repeater

L-REPPRO-BL



## Auxiliary repeater

RR-AUX-REP-WH



## Visor control receiver

RR-VCRX-WH



## PoE injector

L-POEI-BL (120V)

## Keypads



### Sunnata RF Keypads\*†

RRST-W4B-XX (4-button)

RRST-W3RL-XX (3-button with raise/lower)

RRST-W2B-XX (2-button)

STBK-W (replacement button kit, orderable through my Projects)



### SeeTouch Wall-mounted keypads\*†

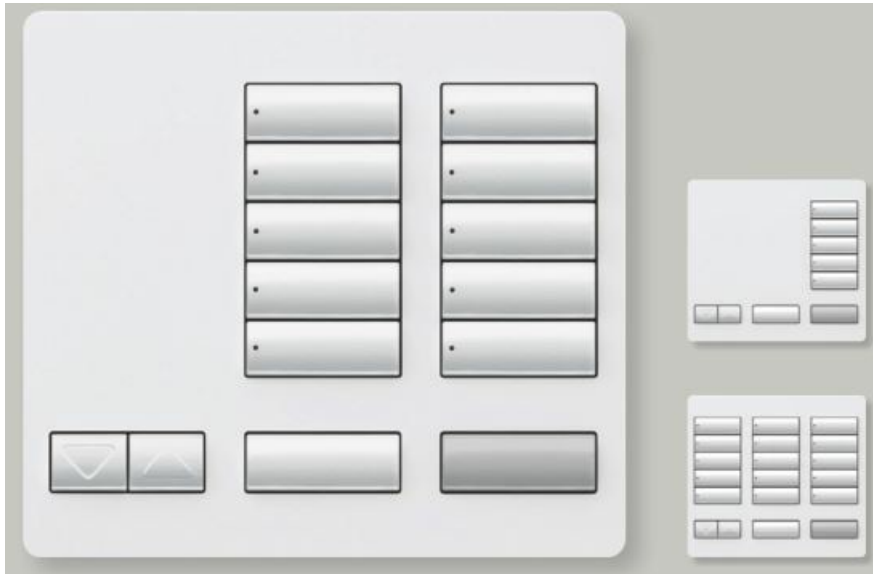
RRD-W1RLD-XX (3-button, 2-button with raise/lower, dual group)

RRD-W2RLD-XX (2-button with raise/lower, dual group)

RRD-W3BD-XX (3-button, dual group)

RRD-W3BRL-XX (3-button group with raise/lower)

RRD-W3S-XX (3-button favorite scene with raise/lower)  
RRD-W3BSRL-XX (3-button spaced with raise/lower)  
RRD-W4S-XX (4-button favorite scene with raise/lower)  
RRD-W5BRL-XX (5-button with raise/lower)  
RRD-W5BRLIR-XX (5-button with raise/lower and IR)  
RRD-W6BRL-XX (6-button with raise/lower)  
RRD-W7B-XX (7-button)



#### **SeeTouch Tabletop keypads\***

RR-T5RL-XX (5-button)  
RR-T10RL-XX (10-button)  
RR-T15RL-XX (15-button)

#### **Light and fan controls**



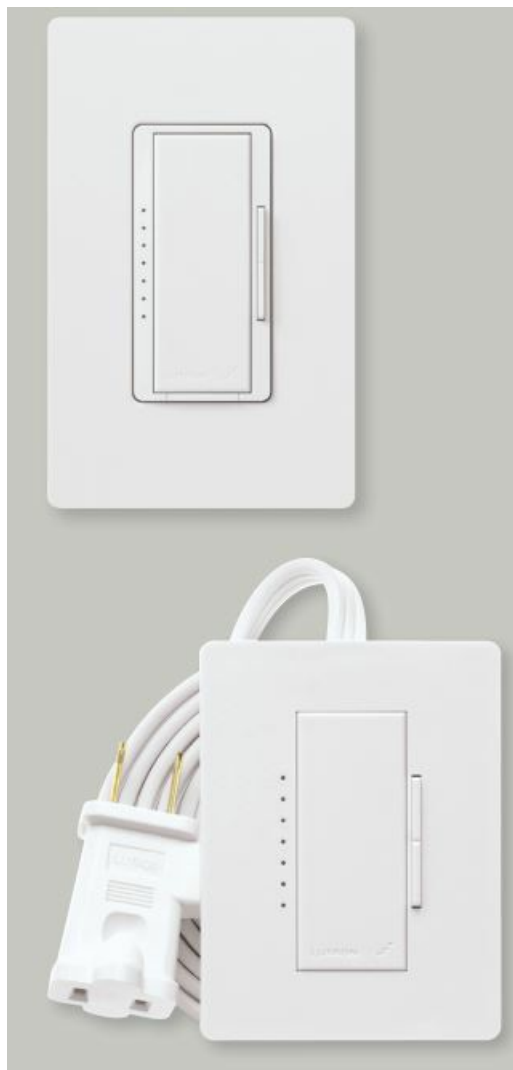
**Dimmers and switches Sunnata\*†**

RRST-PRO-N-XX (RF Dimmer with PRO LED+)

RRST-RD-XX (RF Companion Dimmer)

RRST-8ANS-XX (RF Switch)

RRST-RS-XX (RF Companion Switch)



### **Dimmers and switches Maestro+**

RRD-PRO-XX (250 W LED, 500 W INC/HAL/ELV, 400 VA MLV phase selectable, neutral optional dimmer)

RRD-6ND-XX (150 W LED, 600 W/VA INC/HAL/MLV neutral dimmer)

RRD-10ND-XX (150 W LED, 1000 W/VA INC/HAL/MLV neutral dimmer)

RRD-8ANS-XX (8 A neutral switch)

RRD-8S-DV-XX (dual-voltage 8 A switch)

RRD-F6AN-DV-XX (dual-voltage 3-wire control dimmer)

RD-RD-XX (remote dimmer)

RD-RS-XX (remote switch)

RD-RD-277-XX (277 V remote dimmer)

RD-RS-277-XX (277 V remote switch)

RRD-3LD-XX (300 W lamp dimmer)

RRD-PRO-XX (250 W LED, 500 W INC/HAL/ELV, 400 VA MLV phase selectable, neutral optional dimmer)

RRD-6ND-XX (150 W LED, 600 W/VA INC/HAL/MLV neutral dimmer)

RRD-10ND-XX (150 W LED, 1000 W/VA INC/HAL/MLV neutral dimmer)

RRD-8ANS-XX (8 A neutral switch)

RRD-8S-DV-XX (dual-voltage 8 A switch)

RRD-F6AN-DV-XX (dual-voltage 3-wire control dimmer)

RD-RD-XX (remote dimmer)

RD-RS-XX (remote switch)

RD-RD-277-XX (277 V remote dimmer)

RD-RS-277-XX (277 V remote switch)

RRD-3LD-XX (300 W lamp dimmer)



**Hybrid keypads seeTouch\*\*†**

RRD-H1RLD-XX (3-button, 2-button with raise/lower, dual group)

RRD-H2RLD-XX (2-button with raise/lower, dual group)

RRD-H3BSRL-XX (3-button spaced with raise/lower)

RRD-H3S-XX (3-button favorite scene with raise/lower)

RRD-H4S-XX (4-button favorite scene with raise/lower)

RRD-H5BRL-XX (5-button with raise/lower)

RRD-H6BRL-XX (6-button with raise/lower)

**seeTouch C•L Neutral\*\*†**

RRD-HN1RLD-XX (3-button, 2-button with raise/lower, dual group)

RRD-HN2RLD-XX (2-button with raise/lower, dual group)

RRD-HN3BSRL-XX (3-button spaced with raise/lower)

RRD-HN3S-XX (3-button favorite scene with raise/lower)

RRD-HN4S-XX (4-button favorite scene with raise/lower)

RRD-HN5BRL-XX (5-button with raise/lower)

RRD-HN6BRL-XX (6-button with raise/lower)



### Fan control†

RRD-2ANF-XX

(2 A RF ceiling fan control,  
4 speeds plus off, multi-location



### RF modules\*

LMJ-16R-DV-B (Softswitch relay)

LMJ-5T-DV-B (0 –10 V dimming)

LMJ-CCO1-24-B (contact closure output)



\* Includes one personalized button kit that is redeemed through the Lutron Designer software

† Wallplate sold separately

Note: XX denotes color suffix

Visit [lutron.com](https://lutron.com) for up-to-date gloss and satin finish color information

## Wireless controls



### Pico wireless controls

PJ2-2B-YXX-L01 (light icons)

PJ2-2B-YXX-S08 (screen text)

PJ2-2B-YXX-L02 (power icons)

PJ2-2BRL-YXX-L01 (light icons)

PJ2-3B-YXX-L01 (light icons)

PJ2-3BRL-YXX-L01 (light icons)

PJ2-3BRL-YXX-S01 (shade icons)

PJ2-3BRL-YXX-S02 (shade text)

PJ2-3BRL-YXX-S03 (blackout text)

PJ2-3BRL-YXX-S04 (sheer text)

PJ2-3BRL-YXX-S05 (blind text)

PJ2-3BRL-YXX-S06 (skylight text)

PJ2-3BRL-YXX-S07 (drapery text)

PJ2-3BRL-YXX-S09 (horizontal sheer blind text)

PJ2-3BRL-YXX-S10 (tilt blind icons)



### Pico 4-button wireless controls

PJ2-4B-YXX-L01 (zone control, light icons)

PJ2-4B-YXX-S01 (zone control, shade icons)

PJ2-4B-YXX-L31 (scene keypad, light icons)

PJ2-4B-YXX-S31 (scene keypad, shade icons)

PJ2-4B-YXX-L21 (2-group control, light icons)

PJ2-4B-YXX-S21 (2-group control, shade icons)

PJ2-4B-YXX-LS21 (2-group control, shade/light icons)



### Pico scene keypads

PJ2-2B-YXX-P01 (2-button keypad with Home and Away scenes)

PJ2-2B-YXX-P02 (2-button keypad with Alert and Goodnight scenes)

PJ2-4B-YXX-P01 (4-button keypad with Bright, Entertain, Movie, and Off scenes)

PJ2-4B-YXX-P02 (4-button keypad with Bright, Cooking, Dining and Off scenes)

PJ2-4B-YXX-P03 (4-button keypad with Bright, Entertain, Relax, and Off scenes)



### Custom-printed 4-button Pico wireless controls

PJ2-4B-YXX-EL1 (light control with raise/lower, zone/ standalone keypad)

PJ2-4B-YXX-ES1 (shade control with raise/lower, zone/ standalone keypad)

PJ2-4B-YXX-EL2 (light control scene keypad only)

PJ2-4B-YXX-ES2 (shade control scene keypad only)



### Pico wireless controls with nightlight

PJN-2B-GXX-L01 (light icons)

PJN-3BRL-GXX-L01 (light icons)



**Pico remote for fans**  
PJ2-3BRL-YXX-F01 (fan icons)



**Pico remote for audio**  
PJ2-3BRL-YXX-A02 (audio text/icons)



## **Pedestals for Pico wireless controls**

L-PED1-XX (single pedestal)

L-PED2-XX (double pedestal)

L-PED3-XX (triple pedestal)

Note:

Y denotes finish: “G” for Gloss or “T” for Satin Finish XX denotes color suffix

Visit [lutron.com](http://lutron.com) for up-to-date gloss and satin finish color information

## **Sensors**



## **Ceiling-mount**

### **Radio Powr Savr wireless occupancy/vacancy sensors**

LRF2-OCR2B-P-WH

LRF2-VCR2B-P-WH



## **Corner-, wall-, hall-mount**

### **Radio Powr Savr wireless occupancy/vacancy sensors**

LRF2-OKLB-P-WH (corner-mount)

LRF2-VKLB-P-WH (corner-mount)

LRF2-OWLB-P-WH (wall-mount)  
LRF2-VWLB-P-WH (wall-mount)  
LRF2-OHLB-P-WH (hall-mount)  
LRF2-VHLB-P-WH (hall-mount)

### **Plug-in modules**



### **Plug-in dimming module**

RR-3PD-1-SW (Snow White)  
RR-3PD-1-MN (Midnight)



### **Plug-in appliance module**

RR-15APS-1-SW (Snow White)  
RR-15APS-1-MN (Midnight)

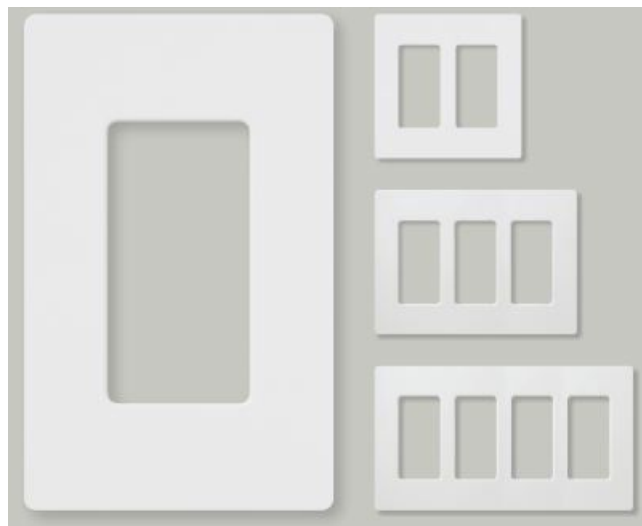
Visit [lutron.com](https://lutron.com) for up-to-date gloss and satin finish color information

### **Temperature controls**



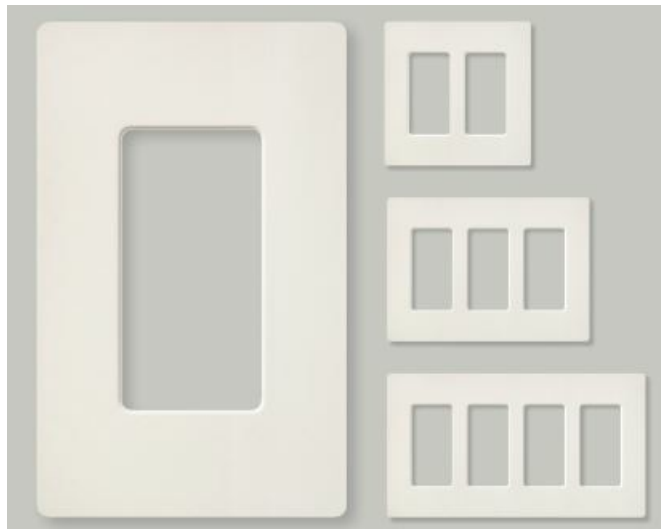
**Lutron Wireless Thermostat**  
L-HWLV2-WIFI

### Wallplates



### Claro Wallplates

- CW-1-XX
- CW-2-XX
- CW-3-XX
- CW-4-XX



### Satin Wallplates

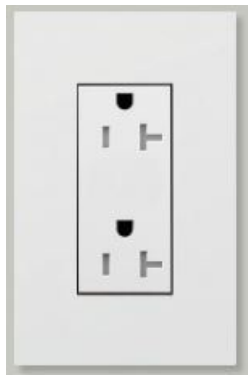
SC-1-XX  
SC-2-XX  
SC-3-XX  
SC-4-XX

### Accessories



### Designer Accessories (Gloss)†

CA-6PF-XX (field customizable multi-port frame)  
CA-CJ-XX (single cable jack)  
CA-PJ-XX (single telephone jack)  
CAR-15-GFST-XX (15 A GFCI tamper-resistant, self-testing receptacle)  
CAR-15-XX (15 A receptacle)  
CAR-15-DDTR-XX (15 A dual dimmable tamper-resistant receptacle)  
CAR-15-HDTR-XX (15 A half dimmable tamper-resistant receptacle)  
CAR-20-DDTR-XX (20 A dual dimmable tamper-resistant receptacle)  
CAR-20-HDTR-XX (20 A half dimmable tamper-resistant receptacle)  
CARS-15-TR-XX (15 A tamper-resistant receptacle)  
CAR-15-UBTR-XX (15 A dual USB tamper-resistant receptacle)



### **New Architectural Accessories†**

LTR-F15-TR-XX (15 A duplex tamper-resistant receptacle)

LTR-F20-TR-XX (20 A duplex tamper-resistant receptacle)

LTR-F15-UBTR-XX (15 A USB tamper-resistant receptacle)



### **Designer Accessories (Satin)†**

SC-6PF-XX (field customizable multi-port frame)

SC-CJ-XX (single cable jack)

SC-PJ-XX (single telephone jack)

SCR-15-GFST-XX (15 A duplex tamper-resistant, self-testing GFCI receptacle)

SCR-15-XX (15 A receptacle)

SCR-20-XX (20 A receptacle)

SCR-20-GFST-XX (20 A duplex tamper-resistant self-testing GFCI receptacle)

SCRS-15-TR-XX (20 A duplex tamper-resistant self-testing GFCI receptacle)

SCRS-20-TR-XX (20 A duplex tamper-resistant receptacle)

SCR-15-DDTR-XX (15 A dual dimmable tamper-resistant receptacle)

SCR-15-HDTR-XX (15 A half dimmable tamper-resistant receptacle)

SCR-20-DDTR-XX (20 A dual dimmable tamper-resistant receptacle)

SCR-20-HDTR-XX (20 A half dimmable tamper-resistant receptacle)

SCR-15-UBTR-XX (15 A dual USB tamper-resistant receptacle)



† Wallplate sold separately

Visit [lutron.com](https://lutron.com) for up-to-date gloss and satin finish color informatio

## Shades



**Roller shades\***



**Honeycomb shades\***



**Roman shade systems**



**Wood blinds\***

\* Battery-powered option available



**Horizontal sheer blinds**



**Drapery track systems**



**Kirbé vertical drapery system**



**Tensioned shades**

**Notes**



Lutron is a trademark of Lutron Electronics Co., Inc., registered in the U.S. and other countries.  
For a complete list of all Lutron trademarks, please visit [lutron.com/trademarks](https://lutron.com/trademarks).






Contents

- 1 Documents / Resources
- 1.1 References

Documents / Resources

	<p><b><a href="#">LUTRON RR-PROC3-KIT All-in-One Processor Kit</a></b> [pdf] User Guide</p> <p>RR-PROC3-KIT, RR-PROC3-CW, RRST-W4B-XX, RRST-W3RL-XX, RRD-W1RLD-XX, RRD-W2RLD-XX, RRD-W3BD-XX, RRD-W3BRL-XX, RRD-W3S-XX, RRD-W3BSRL-XX, RRD-W4S-X X, RRD-W5BRL-XX, RRD-W5BRLIR-XX, RRD-W6BRL-XX, RRD-W7B-XX, RR-PROC3-KIT All-in-One Processor Kit, All-in-One Processor Kit, Processor Kit, Kit</p>
---	---

References

-  [Lutron: Beautiful light. Intelligent Shades. Powerful Controls](#)
-  [Homeowners | RadioRA 3 by Lutron](#)
-  [lutron.com/trademarks](#)