



# LUTRON RadioRA 3 Sunnata Keypad 3 Button Installation Guide

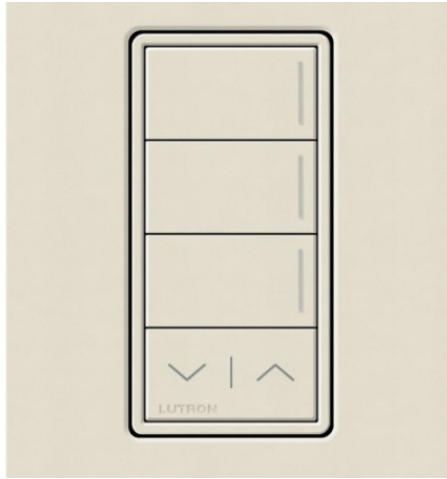
[Home](#) » [Lutron](#) » LUTRON RadioRA 3 Sunnata Keypad 3 Button Installation Guide 

## Contents

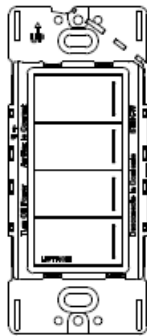
- [1 LUTRON RadioRA 3 Sunnata Keypad 3 Button](#)
- [2 Included Components](#)
- [3 Help](#)
- [4 Turn power OFF at circuit breaker](#)
- [5 Prepare the wires](#)
- [6 IMPORTANT](#)
- [7 Wire the control Mount the wallplate adapter](#)
- [8 Mount the keypad and attach the wallplate](#)
- [9 Turn power ON at circuit breaker](#)
- [10 System setup](#)
- [11 Troubleshooting](#)
- [12 Return to factory settings](#)
- [13 FCC/IC/IFT Information](#)
- [14 Documents / Resources](#)
  - [14.1 References](#)
- [15 Related Posts](#)



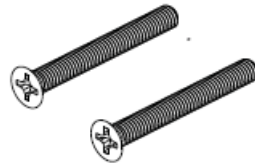
## LUTRON RadioRA 3 Sunnata Keypad 3 Button



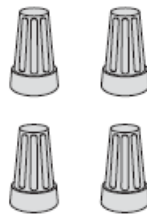
### Included Components



**Keypad**



**Mounting Screws**



**Wire Nut (x4)**

### Help

RA3 Support Center

For additional support in installing, programming,  
and troubleshooting RadioRa3 system devices.



[lutron.com/RA3support](https://lutron.com/RA3support)

**Call us:**

U.S.A. | Canada | Caribbean  
1.844.LUTRON1 (588.7661) (24/7)  
Mexico  
+1.888.235.2910  
Others  
+1.610.282.3800

**Limited Warranty:**

For warranty information, please see the warranty enclosed with the product, or visit [www.lutron.com/resiinfo](http://www.lutron.com/resiinfo)

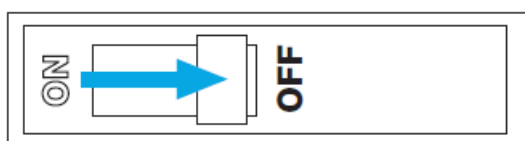
Lutron, Lutron, RadioRA, Claro, Satin Colors, Sunnata and Pico are trademarks or registered trademarks of Lutron Electronics Co., Inc. in the US and/or other countries.

App Store is a service mark of Apple Inc., registered in the U.S. and other countries.

All other product names, logos, and brands are property of their respective owners.

©2021–2022 Lutron Electronics Co., Inc.

**Turn power OFF at circuit breaker**



**WARNING: ELECTRIC SHOCK HAZARD.** May result in Serious Injury or Death. Turn off power at circuit breaker or fuse before installing.

**Prepare the wires**

When making wire connections, follow the recommended strip lengths and combinations for the supplied wire nuts. Note: Wire nuts provided are suitable for copper wire only.

AWG	
12 & 14 AWG (2.5 & 1.5 mm <sup>2</sup> )	3/8 in (10 mm)
18 AWG (0.75 mm <sup>2</sup> )	7/16 in (11 mm)

**IMPORTANT**

**Codes:** Install in accordance with all local and national electrical codes. Type 1 action independently mounted operating control. Pollution degree 2, Impulse voltage 4 kV.

**Environment:** Ambient operating temperature: 32 °F to 104 °F (0 °C to 40 °C), 0 to 90% humidity, non-condensing. Indoor use only.

**Wallplates:** Use only Lutron wallplates with these keypads. The mechanical design of the keypad may not be compatible with non-Lutron wallplates. Non-Lutron wallplates may not sit flush against the wall. Claro and Satin Colors wallplates are designed for best color match and clean aesthetic appearance. Do not paint controls, buttons, or wallplates.

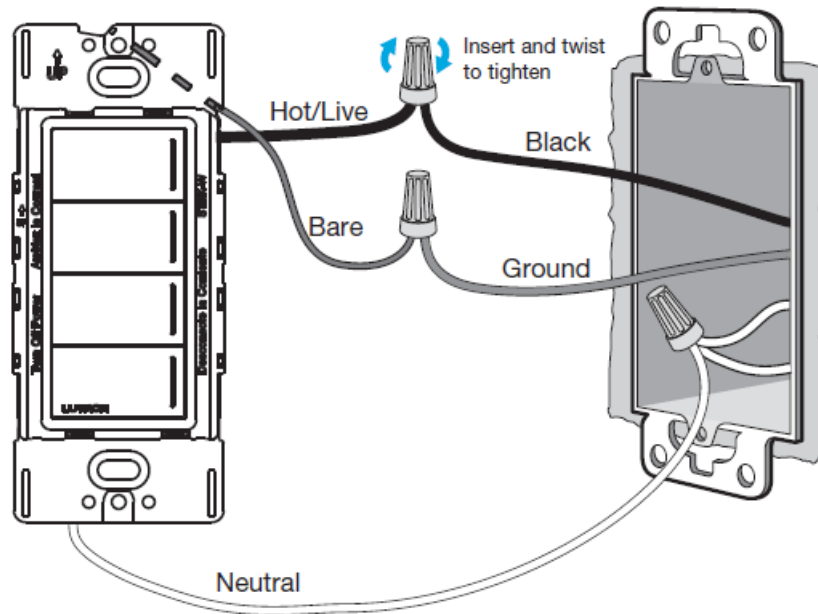
**Cleaning:** For disinfecting keypad, please refer to App Note #758 (048758). See RA3 Support Center link in Help Section.

**Wallboxes:** All keypads require a U.S. wallbox. 3` in (89 mm) deep recommended, 2 1 in (57 mm) deep minimum.

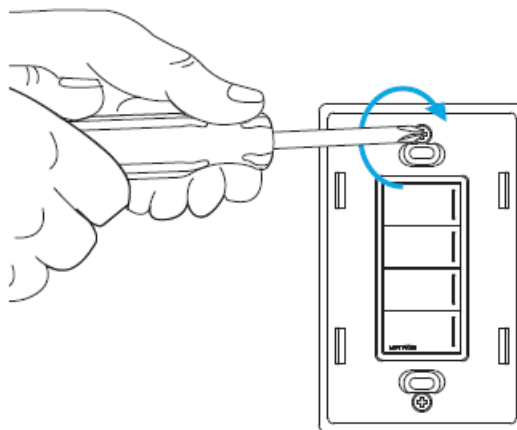
**RF Device Placement:** For reliable performance in a system, this device should be placed within 25 ft (7.6 m) of two additional compatible wireless devices, such as RadioRA 3 Sunnata products and the RadioRA 3 processor. For more information and a full list of compatible wireless devices please refer to the Wireless Setup guide, which can be found in the RA3 Support Center link in the Help Section.

**System Programming:** Programming and activation (addressing) must be accomplished through the RadioRA 3 software.

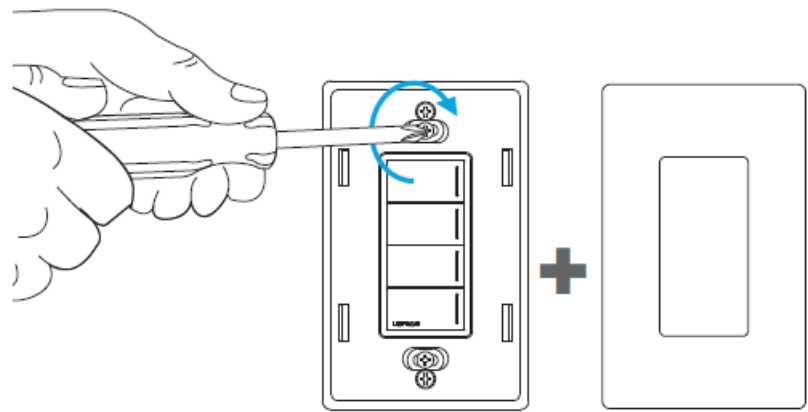
## Wire the control



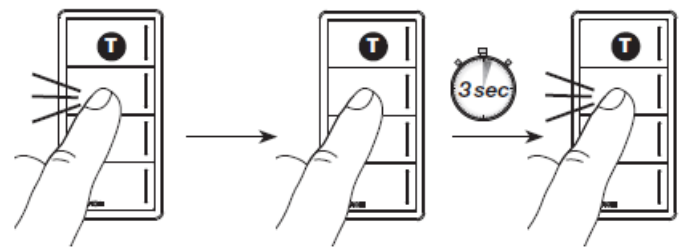
## Mount the wallplate adapter



Mount the keypad and attach the wallplate



Turn power ON at circuit breaker



System setup

This keypad must be used in a RadioRA 3 system with a processor for control of dimmers, switches, and shades. Use the RadioRA 3 programming software to setup the system (training is required to access the software).

Troubleshooting

Symptom	Cause	Action
Status LEDs on the keypad don't light up when buttons on it are pressed.	Power not present at keypad	Circuit breaker OFF. Turn ON breaker
	Incorrect wiring	Wire the keypad according to the Installation section

A specific dimmer, switch or shade / drapery is not controlled when a button is pressed on the keypad.	The dimmer, switch or shade / drapery is not assigned to the keypad	Refer to the RadioRA 3 programming software and ensure the device is assigned to the keypad. Perform a transfer and make sure it is successful
	Failure has occurred on the lamp(s) controlled by the dimmer/switch	Replace the lamp(s)
	There is no power to the dimmer, switch, shade/drapery	Ensure that the device is powered and that the FASS switch is pushed in
	Devices are out of range	Ensure this device is placed within 25 ft (7.6 m) of two additional compatible wireless devices, such as RadioRA 3 Sunnata products and the RadioRA 3 processor
Dimmer, switch or shade / drapery does not go to the desired level or position when a button on the keypad is pressed.	The button was not programmed correctly	Refer to the RadioRA 3 programming software and ensure the device is assigned to the keypad. Perform a transfer and make sure it is successful
	Devices are out of range	Ensure this device is placed within 25 ft (7.6 m) of two additional compatible wireless devices, such as RadioRA 3 Sunnata products and the RadioRA 3 processor

All status LEDs on the keypad flash when any button is pressed.	The keypad is in the Factory Settings mode and has not been configured to work in a system	Refer to the RadioRA 3 programming software and ensure the device is assigned to that keypad. Perform a transfer and make sure it is successful
---	--	---

**Note:** Refer to the system setup guide for additional troubleshooting suggestions.

## Return to factory settings

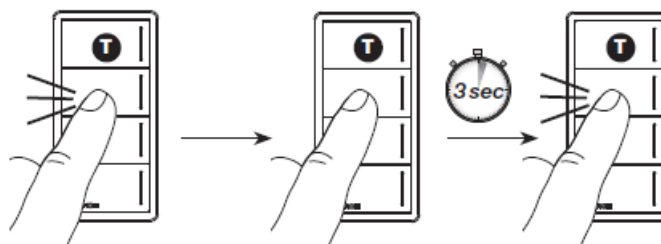
**Note:** Returning a keypad to its factory settings will remove the keypad from the system and erase all programming.

**Step 1:** Triple-tap any button on the keypad (except raise / lower). DO NOT release after third tap.

**Step 2:** Keep the button pressed on the third tap until all the status LEDs start to flash slowly (approximately 3 seconds).

**Step 3:** Immediately release the button and triple tap the button again. The status LEDs on the keypad will flash quickly.

The keypad has now been returned to its factory settings.



## FCC/IC/IFT Information

This device complies with part 15 of the FCC Rules and Industry Canada license-exempt RSS standard(s). Operation is subject to the following two conditions:

1. This device may not cause interference, and

This device must accept any interference, including interference that may cause undesired operation. Modifications not expressly approved by Lutron Electronics Co., Inc. could void the user's authority to operate this equipment.

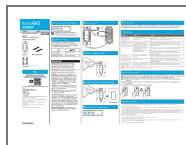
**NOTE:** This equipment has been tested and found to comply with the limits for a Class B digital device, pursuant to part 15 of the FCC Rules. These limits are designed to provide reasonable protection against harmful interference in a residential installation. This equipment generates, uses and can radiate radio frequency energy and, if not installed and used in accordance with the instructions, may cause harmful interference to radio communications. However, there is no guarantee that interference will not occur in a particular installation. If this equipment does cause harmful interference to radio or television reception, which can be determined by turning the equipment off and on, the user is encouraged to try to correct the interference by one or more of the following measures:

- Reorient or relocate the receiving antenna
- Increase the separation between the equipment and receiver
- Connect the equipment into an outlet on a circuit different from that to which the receiver is connected
- Consult the dealer or an experienced radio/TV technician for help.

This equipment complies with FCC radiation exposure limits set forth for an uncontrolled environment. The user should avoid prolonged exposure within 7.9 in (20 cm) of the antenna, which may exceed FCC radio frequency exposure limits.

This Class B digital apparatus complies with Canadian ICES-003.

## Documents / Resources



**[LUTRON RadioRA 3 Sunnata Keypad 3 Button](#)** [pdf] Installation Guide  
RadioRA 3 Sunnata Keypad 3 Button, Keypad 3 Button, RadioRA 3 Sunnata Button, RadioRA 3 Sunnata, Sunnata Button, Sunnata

## References

-  [Application Notes | RadioRA 3 | Lutron](#)
-  [Product Selection Page](#)