




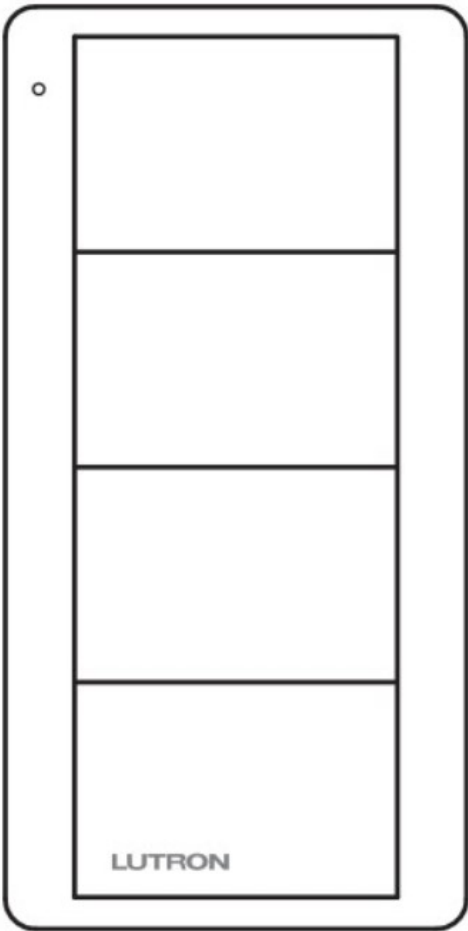
LUTRON PK2-4B Pico 4-Button Wireless Control User Manual

[Home](#) » [Lutron](#) » LUTRON PK2-4B Pico 4-Button Wireless Control User Manual 



Pico 4-Button Wireless Control

3V  10mA



Mounting accessories sold separately. For a complete listing of Pico wireless mounting accessories and more

information about Pico wireless controls, please visit www.lutron.com/pico

PK2-4B PM2-4B PN2-4B PQ2-4B

P/N 040432 Rev. A 09/2017

Contents

[1 Important Notes](#)

[2 Set-Up](#)

[3 Operation](#)

[4 Troubleshooting](#)

[5 Documents /
Resources](#)

[6 Related Posts](#)

Important Notes

Please Read Before Installing

1. This install guide provides simple setup instructions for PowPak systems only. If you are using your Pico wireless control with any other Lutron system, please refer to the system setup guide. If you no longer have your system setup guide, please download the latest version by following the links at www.lutron.com
2. The Pico wireless control uses one (1) CR2032 battery (pre-installed).

DO NOT use rechargeable batteries. Using improper batteries could damage the Pico wireless control.

DO NOT dispose of the battery in normal household waste. Please recycle, take to a proper battery disposal facility, or contact your local waste disposal provider regarding local restrictions on the disposal or recycling of batteries.



WARNING: Risk of fire, explosion and burns. May result in

AI serious injury or death. DO NOT recharge, disassemble, crush, puncture, heat above 100 °C (212 °F) or incinerate the battery.

The battery in this device contains Perchlorate Material — special handling may apply. For more information, visit www.disc.ca.gov/nazarcadouswaste/perchlorate

3. The Pico wireless control! must be paired with dimmer(s)/switch(es) before it can communicate.
4. Up to 10 Pico wireless controls can be configured to work together with a stand-alone PowPak module.
5. The range of the Pico wireless control is 9 m (30 ft). Performance is highly dependent on a variety of complex factors, such as:
 - e Distance between system components.
 - ¢ Geometry of the building structure
 - ¢ Construction of walls separating system components
 - © Electrical equipment located near system components
6. Clean Pico wireless control with a soft damp cloth only. DO NOT use any chemical cleaners.
7. DO NOT paint the Pico wireless control.
8. DO NOT mount the Pico wireless control! to a metal surface.

CE Information (For model numbers PK2-4B, PQ2-4B)



Lutron Bectronics hereby declares that the model numbers tsted above are in compliance with the

essential requirements and other relevant provisions of Directive 1999/5/EC. A copy of the DoS can be obtained by writing to:

Lutron Electronics Co., Inc. 7200 Suter Road. Coopersburg, PA 18036 U.S.A.

ImDA Compliance Information (For model number PM2-4B)

ImDA standards

DA 103083

REGISTERED NO:

ER57951/17

DEALER NO:

0016561/08

Set-Up

(for PowPak systems only)

To communicate with other systems or devices, including GRARIK RA 2, GRAFIK Eye OS, HomeWorks OS, OS sensor module (CSM), Quantum, myRoom, Serena Shades, and Sivoia QS, refer to the system setup guides.

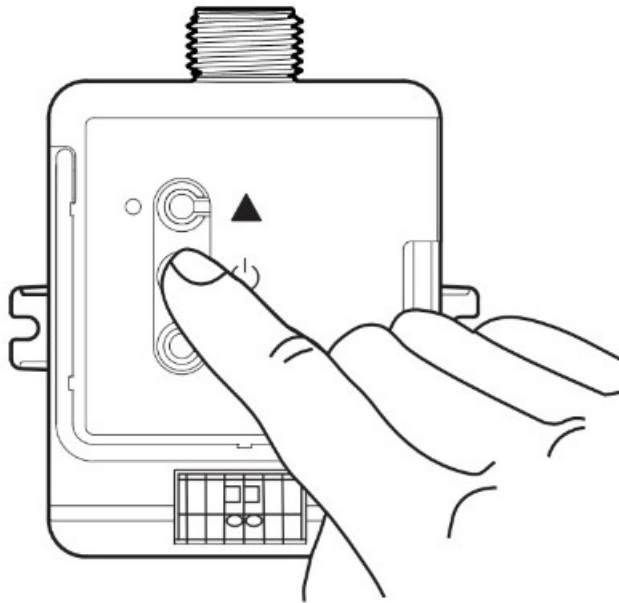
Important: Set up a Pico wireless control to avoid control use,

1. On the PowPak dimming module, hold the Toggle button “6” for 6 seconds until lights flash (Figure 1).
The load status LED will begin flashing twice per second.
2. Press and hold the Off button on the Pico wireless control (Figure 2) until the load status LED on the module and the load flash 3 times (approximately 6 seconds).
3. Repeat step 2 to pair multiple Pico wireless controls with a single Powmak dimming module. Repeat steps 1—2 to pair a single Pico wireless control with multiple dimming modules.
4. On the PowPak dimming module, hold the Toggle button “6” for 6 seconds to save the association. Loads will and LED will quickly blink for 2 seconds.

Notes

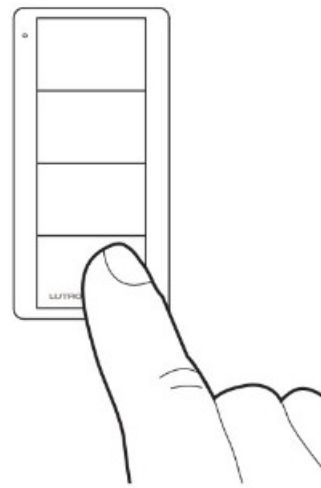
- Zone Control and 2-Group Control: Pairing with multiple load controls will cause each load control to have the same response to each button press of the Pico 4-Button wireless control.
- Scene Control Each load control can be set to unique levels for a personalized effect. For more information, see Scene Control Operation.
- For 2-group Pico wireless controls only, pair the second group by repeating steps 1 through 4 using the OFF button in Group 2 (Figure 3c).

Figure 1



PowPak Module

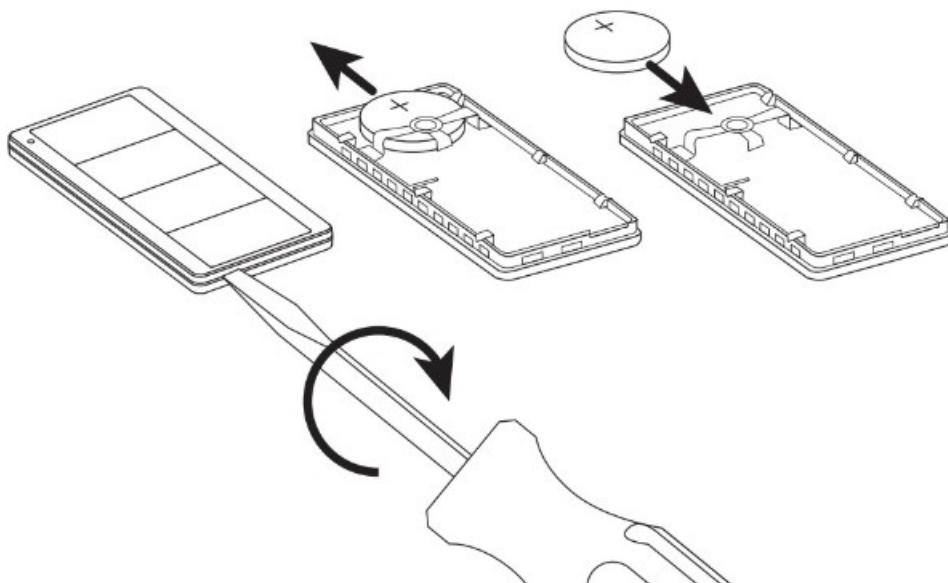
Figure 2



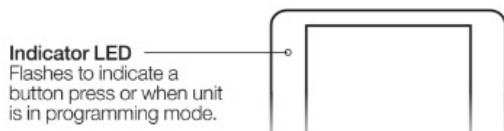
**Pico
Wireless Control**

Replacing the Battery in a Pico Wireless Control

1. Place a flathead screwdriver into the slot at the bottom of the Pico wireless control. Twist to open. DO NOT press buttons without back enclosure on.
2. Slide the battery out, toward the top of the Pico wireless control.
3. Slide 2 new battery underneath the contact strap, with the (+) terminal toward the front of the Pico wireless control.
4. Replace the back enclosure.
5. Confirm proper installation by turning the receiving device ON and OFF using the Pico wireless control.



Operation



Zone Control

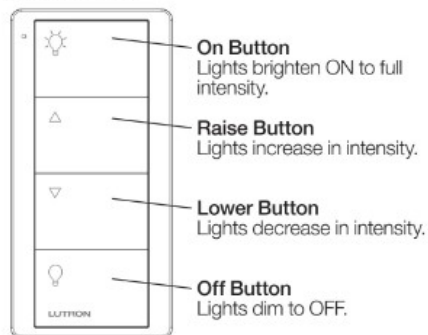


Figure 3a

Scene Control

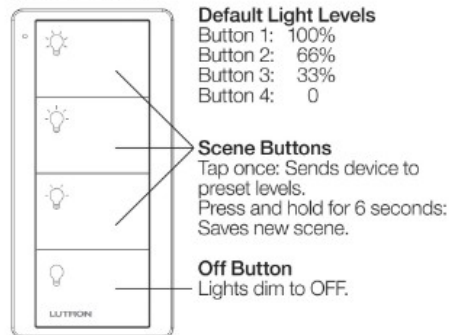


Figure 3b

2-Group Control

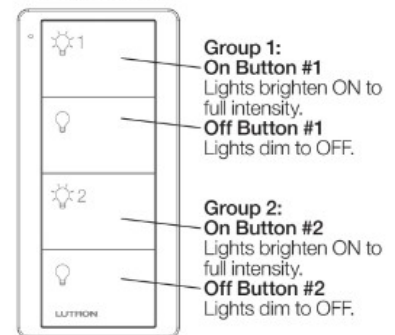


Figure 3c

Scene Control Operation (Figure 3b)

Scene Recall

Pressing a Scene button on a Scene control will cause all associated load controls to go to the Scene settings. Switches can be configured to turn ON or OFF.

Scene Saving

Adjust all of the load controls associated with the Scene Control to the desired light setting. Then press and hold a Scene button on the control for 6 seconds until all LEDs on the load control flash several times.

Locking/Unlocking Scene Levels (for scene controls only)

- To lock the Scene settings, press and hold the top two buttons for approximately 3 seconds. The Scene settings cannot be changed while locked.
- To unlock the Scene settings, simultaneously press and hold the top two buttons for approximately 3 seconds. The Scene settings may be changed while unlocked

Un-pairing a Pico Wireless Control To un-pair a previously paired Pico wireless control from your system perform the following steps:

1. Quickly tap the OFF button, Figure 2, on the Pico wireless control 3 times and continue to hold it for 6 seconds after the third tap
2. Once the indicator LED comes on solid, quickly tap the OFF button 3 times. Do not continue to hold on the third tap.
3. . To test that the Pico wireless control has been successfully removed from the system, press the ON button a verify that the Pico wireless control no longer controls the load.

NOTE: This will remove all dimmers/switches with which it was previously paired.

Troubleshooting

Symptoms	Possible Causes
Light does not respond to Pico wireless control	<ul style="list-style-type: none"> •The bad control failed to pair with the Boo wireless control; see Set-Up. •The bad control has already received and responded to a command or is already ready at the light setting the Pico wireless control is sending. •The Pico wireless control is outside the 9 m operating range. •The battery in the Pico wireless control is low. •The battery in the Pico wireless control is installed incorrectly.
When in set-up mode, the LEDs on the dimmer/switch flash when trying to set up with the Pico wireless control or sensor	<ul style="list-style-type: none"> •The maximum number of Pico wireless controls or sensors has been paired with the load control. More Pico wireless controls or sensors cannot be added. See Un-pairing a Pico Wireless Control.
Cannot save scene	<ul style="list-style-type: none"> •Scene settings are locked. See Locking/Unlocking Scene Levels.
Scene settings change unexpectedly	<ul style="list-style-type: none"> •Saved scene changed. See Locking/Unlocking Scene Levels.

Customer Assistance www.lutron.com/support

For questions concerning the installation or operation of this product, call Lutron Customer Assistance. Please provide exact model number when calling.

Worldwide Headquarters USA TEL: +1.610.282.3800

FM: +1.610.282.1243

Customer Assistance: 1.844.LUTRON1

United Kingdom TEL: +44(0)20.7702.0657

FM: +44.(0)20.7480.6899

Customer Assistance- +44.(0)20.7680.4481

FREEPHONE: 0800.282.107


Singapore TEL: 65.6220.4666 FM: +65.6220.4333

Customer Assistance: 800.120.4491

Lutron EA Ltd 125 Finsbury Pavement, 4th floor London EC2A 1NO, UK

Lutron, QLutron, HomeWorks, PowPak, Pico, Quantum, GRAFIK Eye, Serena, and Sivoia are trademarks of Lutron Electronics Co., Inc. registered in the U.S. and other countries. myRoom and GRAFIK RA are trademarks of Lutron Electronics Co., Inc. © 2017 Lutron Electronics Co., Inc.

Documents / Resources

	<p>LUTRON PK2-4B Pico 4-Button Wireless Control [pdf] User Manual</p> <p>040432, PK2-4B Pico 4-Button Wireless Control, Pico 4-Button Wireless Control, 4-Button Wireless Control, Wireless Control</p>
---	---