



Lutron PJ2-3BRL-GWH-F01 Pico Wireless Control User Guide

[Home](#) » [Lutron](#) » Lutron PJ2-3BRL-GWH-F01 Pico Wireless Control User Guide 

Contents

- 1 Lutron PJ2-3BRL-GWH-F01 Pico Wireless Control
- 2 Product Information
- 3 Product Usage Instructions
- 4 Contents supplied
- 5 Tools you'll need
- 6 Installing your fan control
- 7 Connect the fan control
- 8 Mount the fan control
- 9 Attach the wallplate
- 10 FCC/IC Information
- 11 Warranty
- 12 Using your Caséta Wireless kit
- 13 Download the Lutron app
- 14 Using your controls
- 15 Troubleshooting
- 16 Documents / Resources
 - 16.1 References
- 17 Related Posts



Lutron PJ2-3BRL-GWH-F01 Pico Wireless Control



Product Information

The In-wall fan control (PD-FSQN) is a wireless device that is designed to control one paddle-type ceiling fan with a maximum rating of 1.5A. It works with 120V~ 50/60 Hz power supply. The package comes with wire connectors, screws, and a quick-start guide. The device should only be used for indoor purposes and should not be used to control exhaust fans or lighting loads on a fan. Additionally, the device should not be used to control DC motor fans.

Product Usage Instructions

1. Install the fan according to the manufacturer's instructions and ensure proper operation.
2. Set the fan to the highest speed using the pull chains.
3. Turn off power at the circuit breaker.
4. Remove the wallplate from the switch and remove the switch from the wall.
5. Disconnect all three wires from the switch and place a tag on the load wire.
6. Connect the bare copper (or green) ground wire from the wallbox to the green wire on the fan control using a wire connector.
7. Connect the neutral wire from the wallbox to the white wire on the fan control using a wire connector.
8. Connect the load/tagged wire from the wallbox to the yellow wire on the fan control using a wire connector.
9. Mount the fan control using the screws provided.
10. If using a Claro wallplate (sold separately), attach the adapter to the fan control using the screws provided and snap on the wallplate.
11. Turn power on at the circuit breaker.

Note: The device should only be used to control one paddle-type ceiling fan with a pull chain for speed control. If the fan has more than one switch, please visit www.casetawireless.com/3way for complete installation instructions and how-to videos.

In-wall fan control

Welcome—and thank you for purchasing a Caséta Wireless in-wall fan control. In order to control your ceiling fan from an app or remote, you'll need to replace an existing switch with a Caséta Wireless in-wall fan control. Before you install the fan control, please read the quickstart guide and watch the installation video at

We hope you enjoy the convenience of Caséta Wireless!

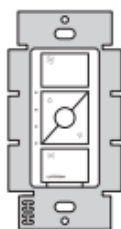
Double your warranty

Love Caséta Wireless controls? Have ideas for making them better? Tell us what you think and we'll extend your warranty by 1 year. www.casetawireless.com/register

Contents supplied

In-wall fan control (PD-FSQN)

120 V~ 50/60 Hz 1.5 A



Wire connectors (3)



Screws (2)



Tools you'll need

Flat-head screwdriver



Pliers



Phillips-head screwdriver



Installing your fan control

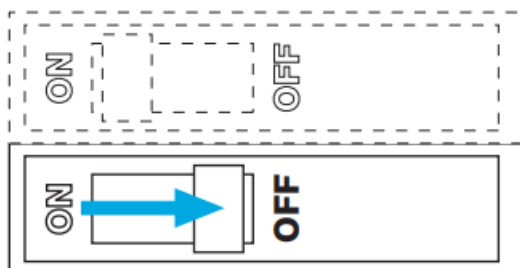
Install the fan

Install the fan according to the manufacturer's instructions and ensure proper operation.

Set the fan speed

Set the fan to the highest speed using the pull chains

Turn power off at circuit breaker!



WARNING: SHOCK HAZARD.

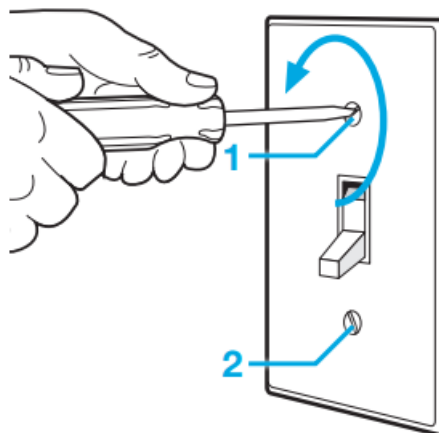
May result in serious injury or death. Turn off power at circuit breaker or fuse before installing.

Important note:

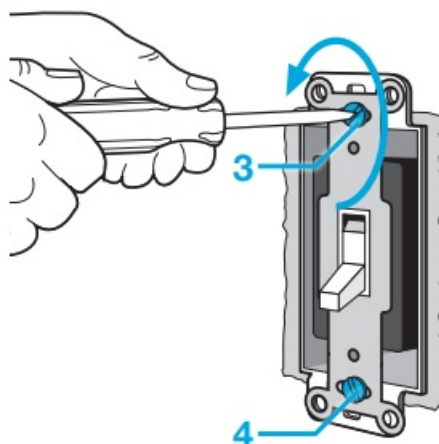
Some fans have one wall switch, while others have two or more wall switches. We've included instructions for fans with one wall switch (called a single pole). If your fan has more than one switch (called a 3-way), please visit www.casetawireless.com/3way for complete installation instructions and how-to videos.

Remove existing switch from wall

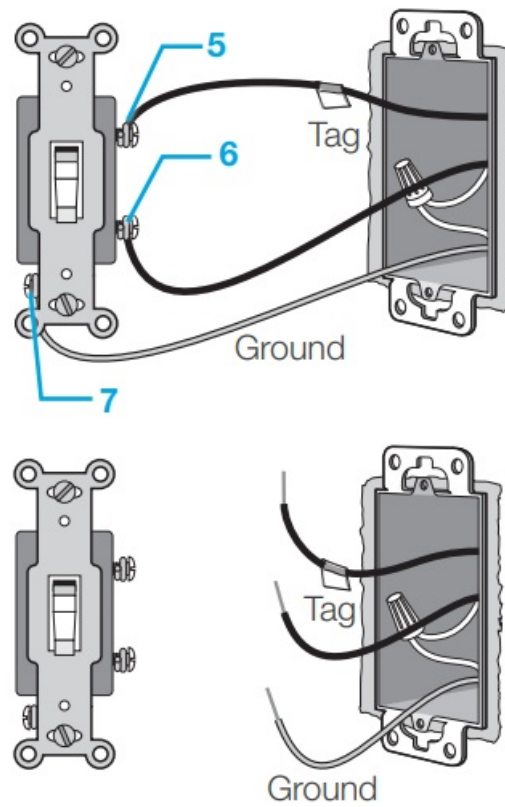
Remove the wallplate from the switch



Remove the switch and pull it away from the wall.

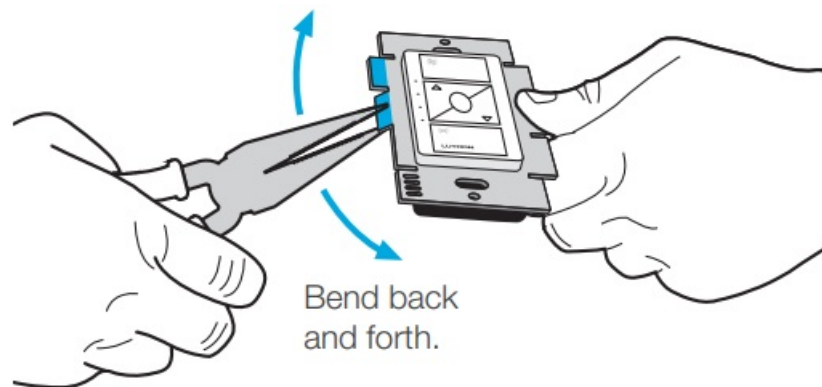


Place tag on load wire. Disconnect all three wires* from the switch.

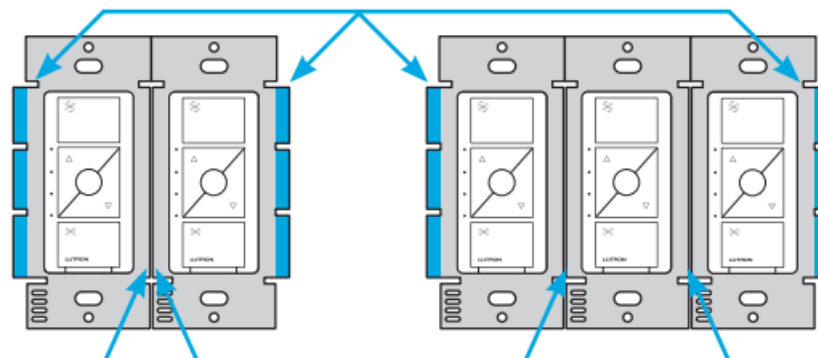


* If your switch has more than 3 wires attached, see “Installing Caséta Wireless in a 3-way switch application” video at www.casetawireless.com/3way

Remove side sections (if necessary)



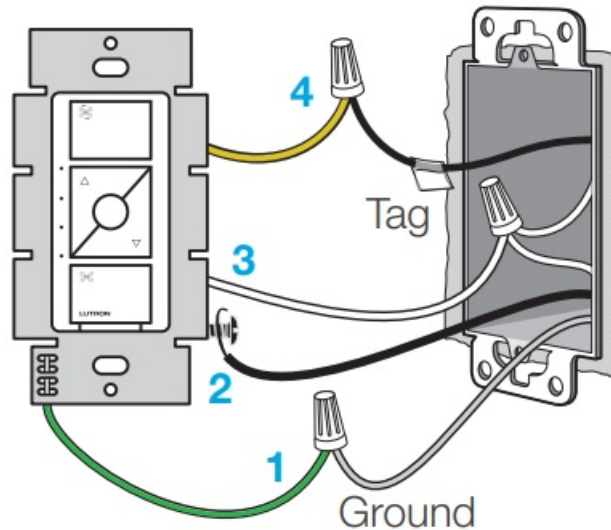
Do not remove outside side sections on the controls at the end of gang.



Each control has inside side sections removed.

Control at middle has all side sections removed.

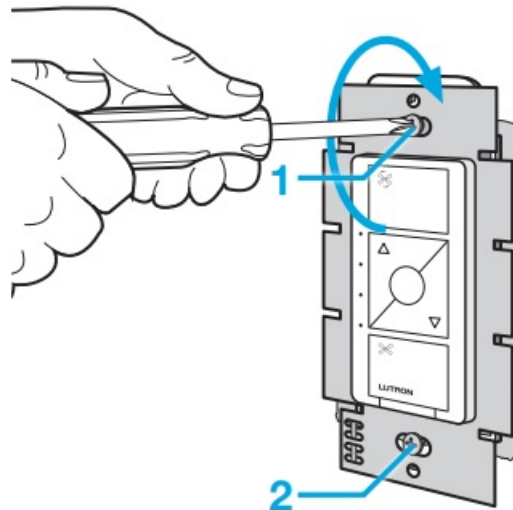
Connect the fan control



1. Connect the bare copper (or green) “ground” wire from the wallbox to the green wire on the fan control using a wire connector.
2. Wrap line/hot wire around screw terminal. Tighten securely to 5 in-lb (0.55 N•m).
3. Connect the neutral wire from the wallbox to the white wire on the fan control using a wire connector.
4. Connect the load/tagged wire from the wallbox to the yellow wire on the fan control using a wire connector.

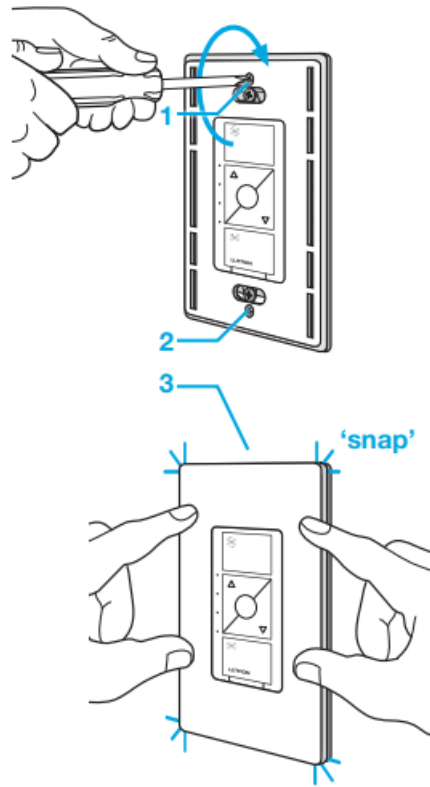
Mount the fan control

Use the screws provided.



Attach the wallplate

If using a Claro wallplate (sold separately), attach the adapter to the fan control using the screws provided and snap on the wallplate.



Turn power on at circuit breaker

CAUTION

Use only with permanently installed ceiling fans. To avoid overheating and possible damage to other equipment, do not use to control receptacles, motordriven appliances, or transformer-supplied appliances.

Codes

Install in accordance with all national and local electrical codes.

Grounding

When no “grounding means” exist in wallbox, the National Electrical Code (NEC®) allows a control to be installed as a replacement if 1) a nonmetallic, noncombustible faceplate is used with nonmetallic attachment screws or 2) the circuit is protected by a ground fault circuit interrupter (GFCI). When installing a control according to these methods, cap or remove green wire before screwing control into wallbox.

FCC/IC Information

This device complies with part 15 of the FCC Rules and Industry Canada license-exempt RSS standard(s). Operation is subject to the following two conditions: (1) This device may not cause interference, and (2) this device must accept any interference, including interference that may cause undesired operation. Modifications not expressly approved by Lutron Electronics Co., Inc. could void the user's authority to operate this equipment.

Note: This equipment has been tested and found to comply with the limits for a Class B digital device, pursuant to part 15 of the FCC Rules. These limits are designed to provide reasonable protection against harmful interference in a residential installation. This equipment generates, uses and can radiate radio frequency energy and, if not installed and used in accordance with the instructions, may cause harmful interference to radio communications. However, there is no guarantee that interference will not occur in a particular installation. If this equipment does cause harmful interference to radio or television reception, which can be determined by turning the equipment off and on, the user is encouraged to try to correct the interference by one or more of the following measures:

- Reorient or relocate the receiving antenna.
- Increase the separation between the equipment and receiver.
- Connect the equipment into an outlet on a circuit different from that to which the receiver is connected.

- Consult the dealer or an experienced radio/TV technician for help

Warranty

For warranty information, please visit www.casetawireless.com/warranty

Works with one paddle-type ceiling fan:



IMPORTANT NOTES

1. For indoor use only.
2. Operate between 32 °F (0 °C) and 104 °F (40 °C).
3. Use to control one paddle-type ceiling fan.
4. Use the ceiling fan's pull chain to set its speed to the highest setting.
5. Do not use to control exhaust fans (e.g. bathroom or kitchen exhaust fans).
6. Do not use to control fans that have integrated fan speed controls other than a pull chain (i.e. fans that have a remote control), unless the integrated control is removed from the ceiling fan.
7. Do not connect to any other motor-operated appliance or to any lighting load type.
8. Do not use to control lighting loads on a fan.
9. Do not use to control DC motor fans.

Using your Caséta Wireless kit

(sold separately)

With a smartphone or tablet (Bridge required, sold separately)

- The Caséta Wireless fan control can be controlled from a smartphone when used with the Lutron Smart Bridge.
- If you are using the fan control and remote control with the Lutron Smart Bridge follow the instructions below



Lutron Smart Bridge



Lutron app

Note: If you are using the fan control and remote control with another manufacturer's bridge, please refer to that manufacturer's instructions for set-up.

Download the Lutron app



Search for "Lutron Caseta"



Lutron

www.casetawireless.com/LutronApp

www.casetawireless.com/LutronApp

Launch the Lutron app



The Lutron app will walk you through setting up your devices.

Use the Lutron app to complete ALL remaining steps



Add devices

- Pico remotes
- Dimmers
- Shades
- Switches
- Fan controls



Control three ways



Schedule your lights or fans

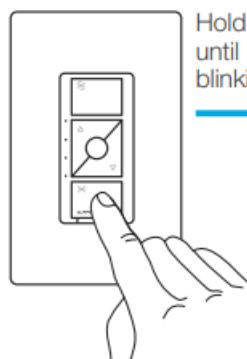


Connect while away

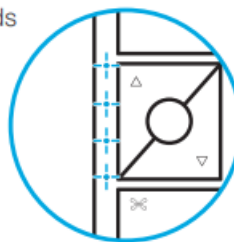
Without a smartphone or tablet (Bridge not required)

Pairing the fan control and Pico remote control

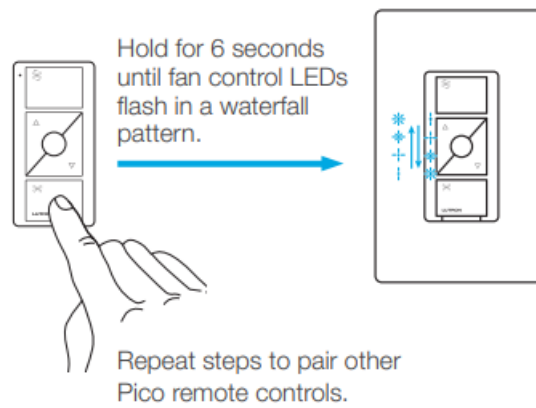
1. Press and hold "off" button on the fan control



Hold for 6 seconds until LEDs start blinking



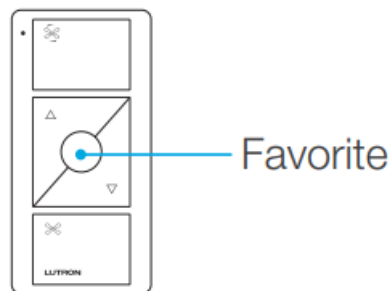
2. Press and hold "off" button on the Pico remote control



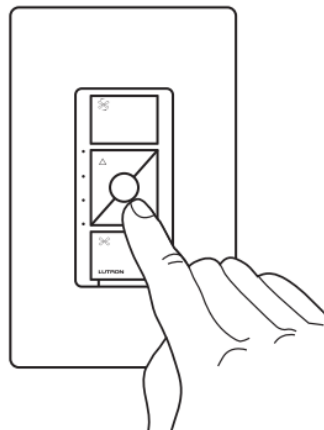
Changing the favorite setting on the Pico remote control (sold separately) or fan control

The round “favorite” button on the Pico remote control or fan control can be used to recall favorite speed(s).

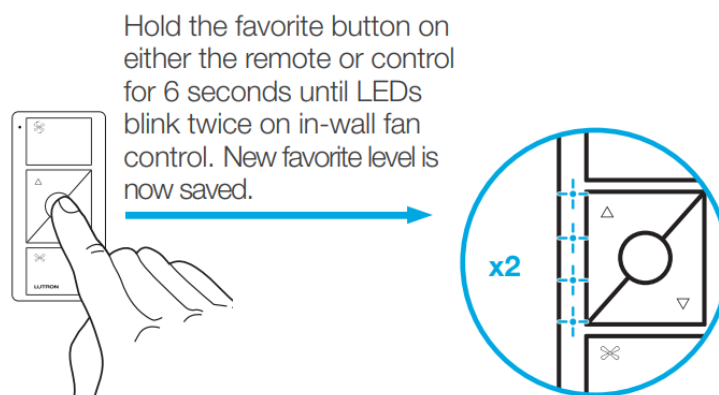
Both the Pico remote control and the fan control can have different favorite speeds. The default is Medium, but it can be changed to any speed



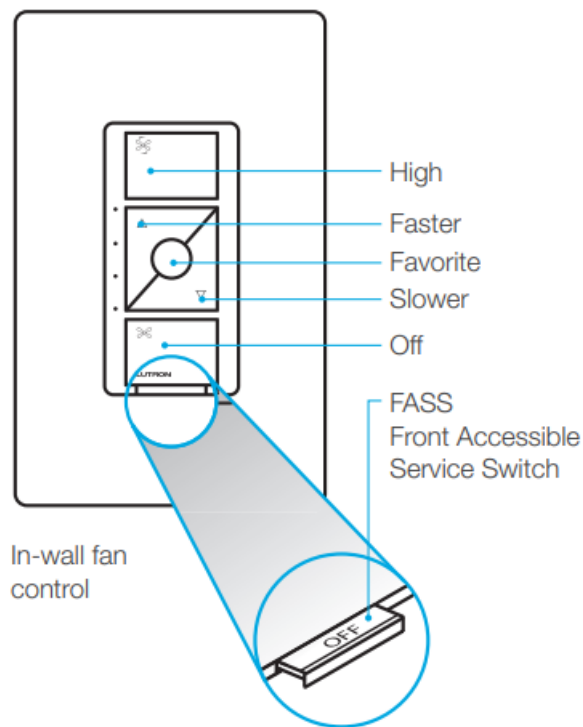
3. Set desired fan speed setting on fan control



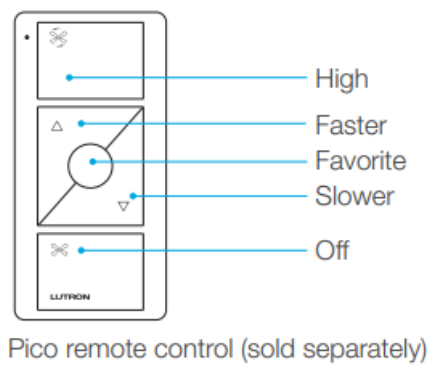
4. Press and hold “favorite” button



Using your controls



Important Notice: To service or clean the fan, remove power by pulling out the FASS as far as possible. To restore power after servicing the load, push the FASS back in completely.



Pico remote control (sold separately)

For advanced features, tips for using Caséta Wireless products, the complete Caséta Wireless product line, and more, please visit www.casetawireless.com/features

Troubleshooting

Symptoms	Probable cause and action
Fan does not turn ON and no indicator lights turn ON.	<ul style="list-style-type: none">• Ensure that the fan pull chain is set to highest possible setting.• Load and Line wires may be reversed. Swap wires that are attached to the yellow wire and black screw terminal on the fan control. Refer to wiring diagram in step 6.• Neutral wire is not connected. Refer to wiring diagram in step 6.• Front Accessible Service Switch (FASS) is in the OFF position. Push FASS in to the ON position.• Breaker is OFF or tripped (or fuse blown). Reset breaker or replace fuse. If condition persists, contact Lutron Customer Assistance or a licensed electrician.
Fan does not turn ON and indicator lights are ON.	Fan direction switch is between forward and reverse. Set switch to desired position.
Fan speed is too slow.	Set fan pull chain speed to high.

Go to www.casetawireless.com/support for additional troubleshooting suggestions.



Lutron Lutron, Caséta , Lutron

and Pico are trademarks of Lutron Electronics Co., Inc., registered in the U.S. and other countries. FASS and Smart Bridge are trademarks of Lutron Electronics Co., Inc. NEC is a registered trademark of the National Fire Protection Association, Quincy, Massachusetts. Google and the Google logo are registered trademarks of Google Inc., used with permission. Apple is a trademark of Apple Inc., registered in the U.S. and other countries. App Store is a service mark of Apple Inc.

©2018-2019 Lutron Electronics Co., Inc

Documents / Resources

	Lutron PJ2-3BRL-GWH-F01 Pico Wireless Control [pdf] User Guide PJ2-3BRL-GWH-F01 Pico Wireless Control, PJ2-3BRL-GWH-F01, Pico Wireless Control, Wireless Control
--	---

References

- [Installing Caséta for a light with two switches | Lutron](#)
- [Application Notes | Caséta Wireless | Lutron](#)
- casetawireless.com/register

-  [Application Notes | Caséta Wireless | Lutron](#)
-  casetawireless.com/warranty

Manuals+.