



LUTRON PD-6WCL Smart Hub Pico Remote Control and In Wall Dimmer User Guide

[Home](#) » [Lutron](#) » LUTRON PD-6WCL Smart Hub Pico Remote Control and In Wall Dimmer User Guide 

Contents

- 1 LUTRON PD-6WCL Smart Hub Pico Remote Control and In Wall Dimmer
- 2 Product Information
- 3 Product Usage Instructions
- 4 Q: What is the maximum wattage for different types of light bulbs?
- 5 Double your warranty
- 6 Contents supplied
- 7 Tools you'll need
- 8 Installing your dimmer
- 9 Using your Caséta by Lutron kit
- 10 Using your controls
- 11 Troubleshooting
- 12 Documents / Resources
 - 12.1 References



LUTRON PD-6WCL Smart Hub Pico Remote Control and In Wall Dimmer



Packaging may vary

Product Information

Specifications:

- Model Numbers: P-BDG-PKG1W-C, P-BDG-PKG1W-AC, P-BDG-PKG1W-R3-C, P-BDGPRO-PKG1W-C
- Included Contents:
 - In-wall dimmer (PD-6WCL)
 - Claro wallplate (CW-1)
 - Pico remote control (PJ2-3BRL)
 - Wire connectors (3)
 - Screws (2)
 - Lutron smart hub (L-BDG2 or L-BDGPRO2*)
 - Power Supply (T-5DC-USB)
 - Ethernet Cable
- Works with energy efficient dimmable light bulbs:
 - LED up to 150 W
 - Halogen up to 600 W
 - Incandescent up to 600 W

Product Usage Instructions

Installation for lights with one wall switch (single-pole):

1. Turn power off at circuit breaker!
2. Remove existing switch from wall.
3. Remove side sections (if necessary).

1. Remove the wallplate from switch.
2. Remove the switch and pull it away from the wall.
3. Bend back and forth. Do not remove outside side sections on dimmers at the end of gang.
4. Disconnect all three wires* from the switch.
5. Connect the dimmer:
 1. Connect the bare copper (or green) ground wire from the wallbox to the green wire on the dimmer using a wire connector.
 2. Connect either of the remaining wires from the wallbox to either of the remaining wires on the dimmer using a second wire connector.
 3. Connect the remaining wire from the wall to the remaining wire on the dimmer using a third wire connector.
6. Mount the dimmer using the screws provided.
7. Attach the wallplate by attaching the adapter to the dimmer using the provided screws and snap on the wallplate.

Important Notes:

- Some lights have one wall switch (single-pole), while others have two or more wall switches (3-way).
 - If your light has more than one switch, please visit www.casetawireless.com/3way for complete installation instructions and how-to videos.
- Removing side sections reduces the dimmer's maximum wattage rating. See the chart below for maximum wattage information.

Maximum Wattage Derating Chart (120 V~ 50 / 60 Hz):

Side Sections Removed	LED	Incandescent & Halogen
None	150W	600W
1 side	150W	500W
2 sides	150W	400W

FAQ:

Q: Where can I find the installation video?

A: You can find the installation video at www.casetawireless.com/support.

Q: What tools do I need for installation?

A: You will need a flat-head screwdriver, pliers, and a Phillips-head screwdriver.

Q: How do I adjust the dimmer for best bulb performance if my dimmable LED bulbs flicker or turn off?

A: Please visit www.casetawireless.com/lowend for information on adjusting the dimmer for best bulb performance.

Q: Where can I find a list of compatible dimmable LEDs?

A: For a complete list of compatible dimmable LEDs, please visit www.casetawireless.com/bulblast.

Q: What is the maximum wattage for different types of light bulbs?

A: The maximum wattage for different types of light bulbs are as follows:

- LED: up to 150 W
- Halogen: up to 600 W
- Incandescent: up to 600 W

Q: How can I contact Lutron Electronics Co., Inc.?

A: You can contact Lutron Electronics Co., Inc. at the following address:
7200 Suter Road
Coopersburg, PA 18036-1299
U.S.A.

Lutron smart hub, Pico remote control & in-wall dimmer

Welcome—and thank you for purchasing a Caséta by Lutron dimming kit.

Before you install the dimmer, please watch the installation video at www.casetawireless.com/support

We hope you enjoy the convenience of Caséta by Lutron!

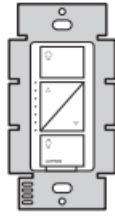
Double your warranty

Love Caséta dimmers? Have ideas for making them better? Tell us what you think and we'll extend your warranty by 1 year. www.casetawireless.com/register

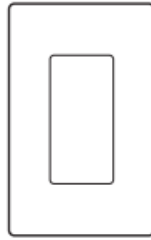
P-BDG-PKG1W
P-BDG-PKG1W-R3
P-BDGPRO-PKG1W

Contents supplied

In-wall
dimmer
(PD-6WCL)



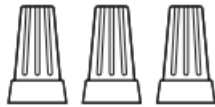
Claro wallplate
(CW-1)



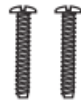
Pico remote
control
(PJ2-3BRL)



Wire connectors (3)



Screws (2)



P/N 0302082 REV A

Lutron
smart hub
(L-BDG2 or
L-BDGPRO2*)



Power Supply
(T-5DC-USB)



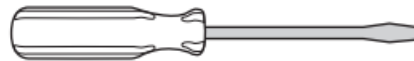
Ethernet
Cable



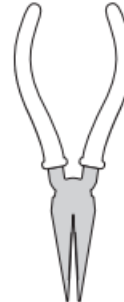
* L-BDGPRO2 only comes
in the P-BDGPRO-PKG1W
package

Tools you'll need

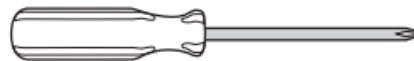
Flat-head screwdriver



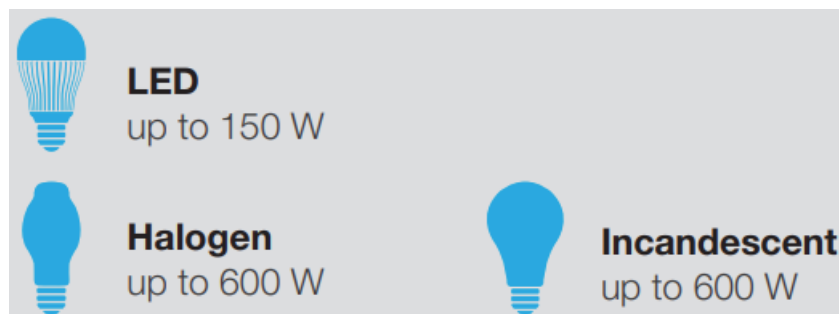
Pliers



Phillips-head screwdriver



Works with energy efficient dimmable light bulbs:



- **NOTE:** You can mix and match dimmable LED, halogen, and incandescent light bulbs with Caséta dimmers.
- Dimmable LED light bulbs vary in their dimming performance. If you're using these bulbs and they flicker or turn

off, please visit www.casetawireless.com/lowend for information on adjusting the dimmer for best bulb performance.

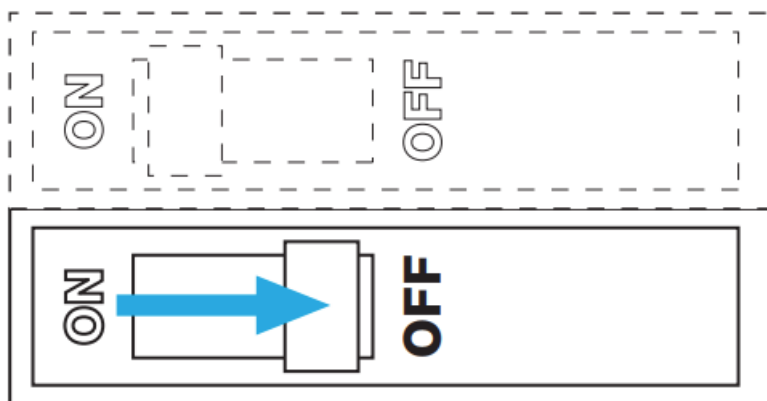
- For a complete list of compatible dimmable LEDs, please visit www.casetawireless.com/bulblast

Lutron Electronics Co., Inc.
7200 Suter Road
Coopersburg, PA 18036-1299, U.S.A.

Installing your dimmer

Installation for lights with one wall switch (single-pole)

Turn power off at circuit breaker!



WARNING: SHOCK HAZARD.

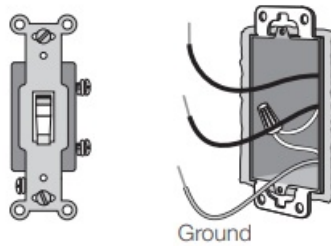
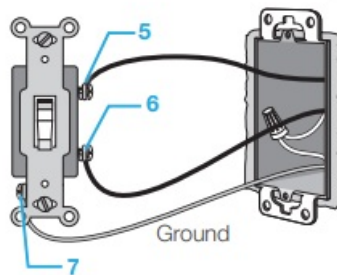
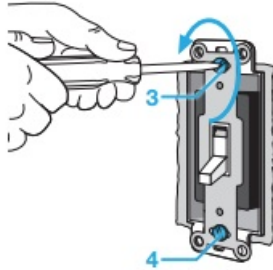
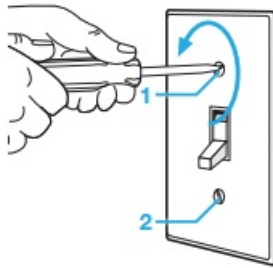
May result in serious injury or death. Turn off power at circuit breaker or fuse before installing.

Important note (3-Way):

Some lights have one wall switch, while others have two or more wall switches (such as stair lights, which have a switch at both the top and bottom of the stairs). We've included instructions for lights with one wall switch (called a single-pole). If your light has more than one switch (called a 3-way), please visit www.casetawireless.com/3way for complete installation instructions and how-to videos.

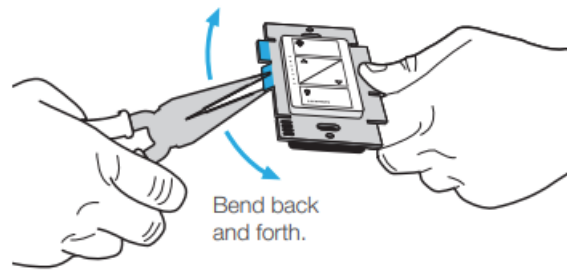
Remove existing switch from wall

- Remove the wallplate from switch.
- Remove the switch and pull it away from the wall.
- Disconnect all three wires* from the switch.

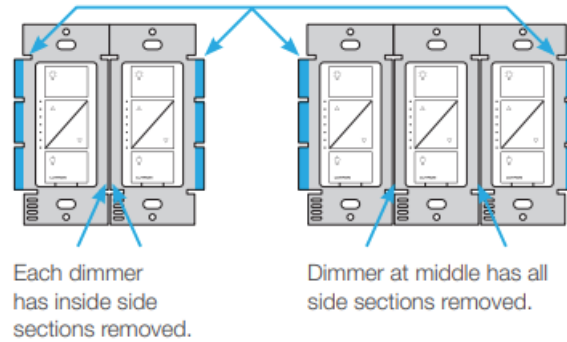


* If your switch has more than 3 wires attached, see “Installing Caséta in a 3-way switch application” video at www.casetawireless.com/3way

Remove side sections (if necessary)



Do not remove outside side sections on dimmers at the end of gang.



Important note:

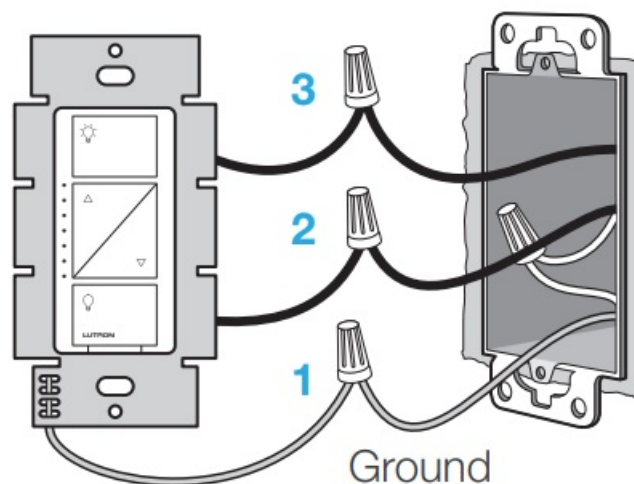
Removing side sections reduces the dimmer's maximum wattage rating. See the chart below for maximum wattage information.

Maximum* wattage derating chart (120 V~ 50 60 Hz)

Side sections removed	None	1 side	2 sides
LED	150 W	150 W	150 W
or*			
Incandescent & Halogen	600 W	500 W	400 W

For maximum wattage information when mixing light bulb types see www.casetawireless.com/ganging

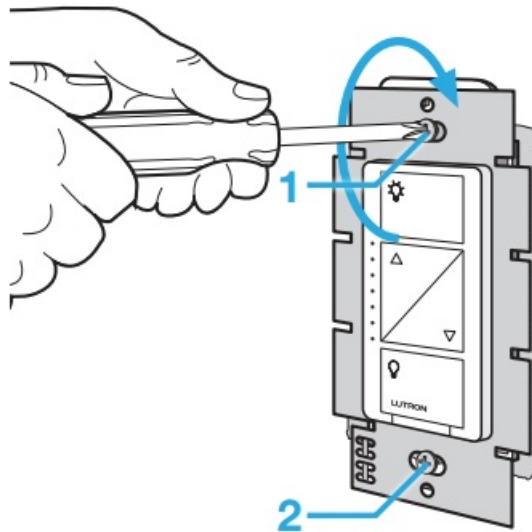
Connect the dimmer



1. Connect the bare copper (or green) “ground” wire from the wallbox to the green wire on the dimmer using a wire connector.
2. Connect either of the remaining wires from the wallbox to either of the remaining wires on the dimmer using a second wire connector.
3. Connect the remaining wire from the wall to the remaining wire on the dimmer using a third wire connector.

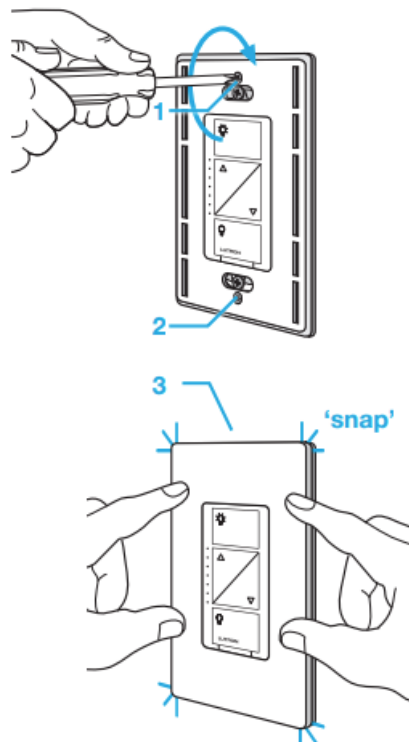
Mount the dimmer

Use the screws provided.



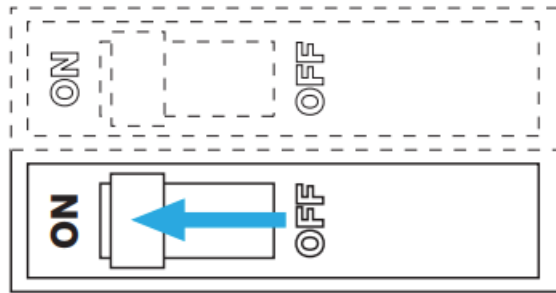
Attach the wallplate

Attach the adapter to the dimmer using the screws provided and snap on the wallplate.



(If you installed the dimmer next to other dimmers or switches, you'll need to install a wallplate with the correct size/number of openings to accommodate all the devices.)

Turn power on at circuit breaker

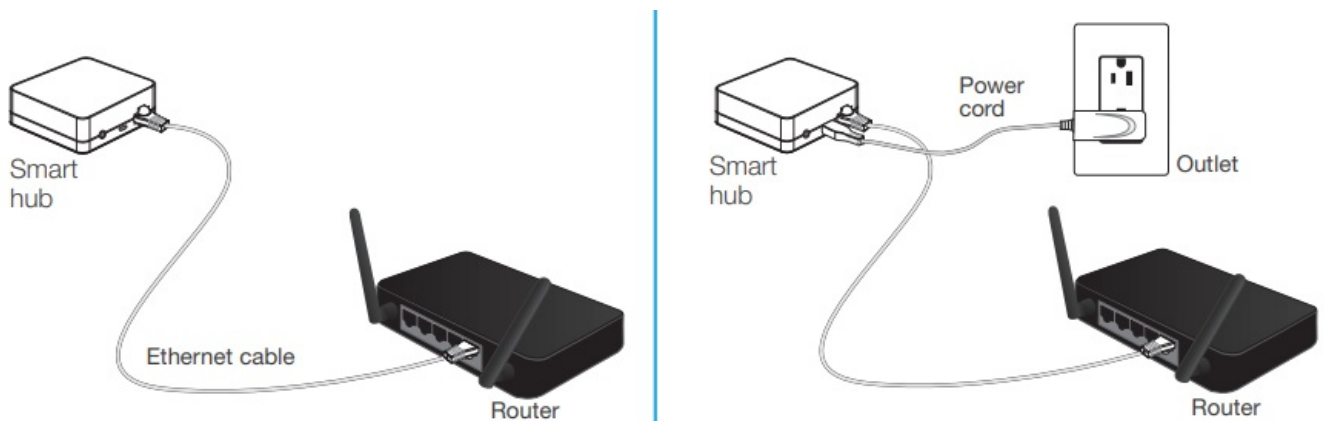


Repeat Steps 1 through 7 to install the second dimmer.

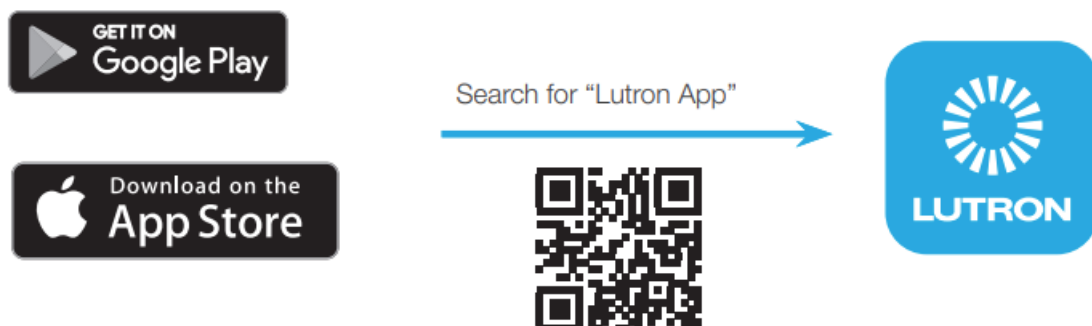
Using your Caséta by Lutron kit

Install the Lutron smart hub

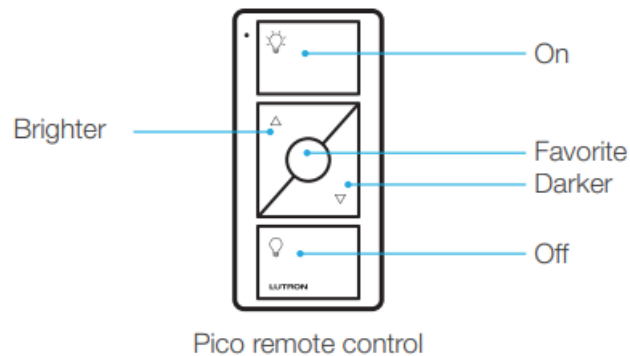
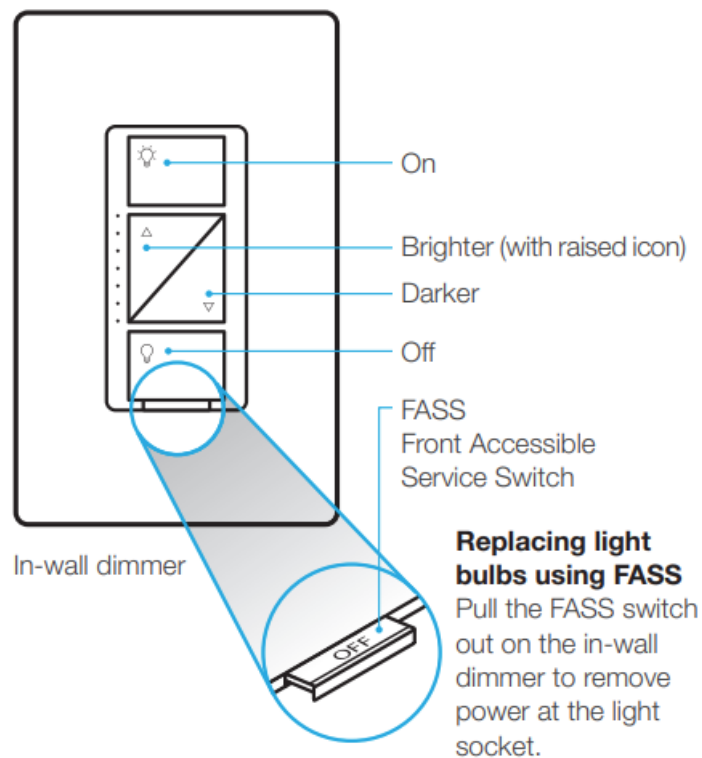
- A. Connect the smart hub to your Wi-Fi router using the Ethernet cable
- B. Connect the power cord to the smart hub and plug it into an outlet.



Download the Lutron app and walk through setup



Using your controls



Device Ratings

In-wall dimmer

PD-6WCL
120 V~ 50/60 Hz
Lutron smart hub *
L-BDG2 or L-BDGPRO2
5 V- 300 mA

PicoR remote control

PJ2-3BRL
3 V- 10 mA
(1) CR2032 battery
(included)

Power supply

T-5DC-USB
Input: 100–240 V~
50/60 Hz 100 mA
Output: 5 V- 550 mA

Connect to a Class 2, LPS, or SELV, limited energy (<15 W) power source only.

Troubleshooting

Symptoms	Probable cause and action
Light does not turn on or in-wall dimmer LEDs do not light up.	<ul style="list-style-type: none">• Light bulb(s) burned out.• Breaker is OFF or tripped.• Light not properly installed.• Wiring error.• FASS switch on the dimmer is in the Off position.
Light does not respond to Pico remote control.	<ul style="list-style-type: none">• The dimmer is not properly paired with the Pico remote control; <i>The Pico remote control can be paired with the dimmer using the Lutron app.</i>• The dimmer is already at the light level the Pico remote control is sending.• The Pico remote control is outside the 30 ft (9 m) operating range.• The Pico remote control battery is low.• The Pico remote control battery is installed incorrectly.
<ul style="list-style-type: none">• Bulbs turn off while being dimmed.• Bulbs turn on at high light level but do not turn on at a low light level.• Bulbs flicker or flash when dimmed to a low light level.	Verify bulbs are marked dimmable and visit www.casetawireless.com/lowend for information on adjusting the dimmer for best bulb performance.

Important notes:

1. For indoor use only
2. Operate between 32 °F (0 °C) and 104 °F (40 °C)

Go to www.casetawireless.com/support for additional troubleshooting suggestions.

CAUTION

Use only with permanently installed fixtures with dimmable LED, halogen, or incandescent lamps. To avoid overheating and possible damage to other equipment, do not use to control receptacles, motor-driven appliances, or transformer-supplied appliances.

CAUTION: Risk of Fire, Explosion, Leakage, and Burns. Do Not Recharge, Disassemble, Heat Above 212 °F (100 °C) or Incinerate. This product contains a lithium button/coin cell battery. Keep batteries away from children. If a new or used lithium button/coin cell battery is swallowed or enters the body, it can cause severe internal burns and can lead to death in as little as 2 hours. Always completely secure the battery compartment. If the battery compartment does not close securely, stop using the product, remove the batteries, and keep the batteries away from children. If you think batteries might have been swallowed or placed inside any part of the body, seek

immediate medical attention. The battery in this device contains Perchlorate Material — special handling may apply.

For more information, visit www.dtsc.ca.gov/hazardouswaste/perchlorate

Codes

Install in accordance with all national and local electrical codes.

Grounding

When no “grounding means” exist in wallbox, the National Electrical Code (NEC®) allows a control to be installed as a replacement if 1) a nonmetallic, noncombustible faceplate is used with nonmetallic attachment screws or 2) the circuit is protected by a ground fault circuit interrupter (GFCI). When installing a control according to these methods, cap or remove green wire before screwing control into wallbox.

Use of the HomeKit logo means that an electronic accessory has been designed to connect specifically to iPod, iPhone, or iPad, respectively, and has been certified by the developer to meet Apple performance standards. Apple is not responsible for the operation of this device or its compliance with safety and regulatory standards. Please note that the use of this accessory with iPod, iPhone, or iPad may affect wireless performance.

FCC/IC Information

For FCC/IC information, please visit: www.lutron.com/fcc-ic

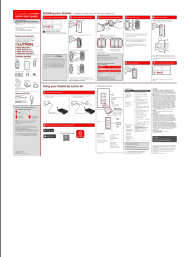
Warranty

For warranty information, please visit www.casetawireless.com/warranty

The Lutron logo, Lutron, Claro, Caséta, FASS, the Lutron Caséta & RA2 Select app logo, the design of the Pico remote, and Pico are trademarks or registered trademarks of Lutron Electronics Co., Inc. in the US and/or other countries. Apple, iPod, iPhone, and iPad are trademarks of Apple Inc., registered in the U.S. and other countries. HomeKit is a trademark of Apple Inc. App Store is a service mark of Apple Inc., registered in the U.S. and other countries. All other product names, logos, and brands are property of their respective owners.






© 2015-2023 Lutron Electronics Co., Inc.

Documents / Resources

	<p>LUTRON PD-6WCL Smart Hub Pico Remote Control and In Wall Dimmer [pdf] User Guide PD-6WCL, CW-1, PJ2-3BRL, L-BDG2, L-BDGPRO2, T-5DC-USB, P-BDG-PKG1W-C, P-BDG-PKG1W-A-C, P-BDG-PKG1W-R3-C, P-BDGPRO-PKG1W-C, PD-6WCL Smart Hub Pico Remote Control and In Wall Dimmer, Smart Hub Pico Remote Control and In Wall Dimmer, Pico Remote Control and In Wall Dimmer, Remote Control and In Wall Dimmer, In Wall Dimmer, Wall Dimmer , Dimmer</p>
---	--

References

- casetawireless.com/register
- [Caseta by Lutron | Smart Light Switches, Controls & Dimmers](#)
- [Installing Caséta for a light with two switches | Lutron](#)
- [Lutron Support Center | Lutron](#)

-  [Capacity Derating Charts](#)
-  [Application Notes | Caséta Wireless | Lutron](#)
-  [casetawireless.com/warranty](#)
-  [dtsc.ca.gov/hazardouswaste/perchlorate](#)
-  [lutron.com/fcc-ic](#)
- [User Manual](#)