



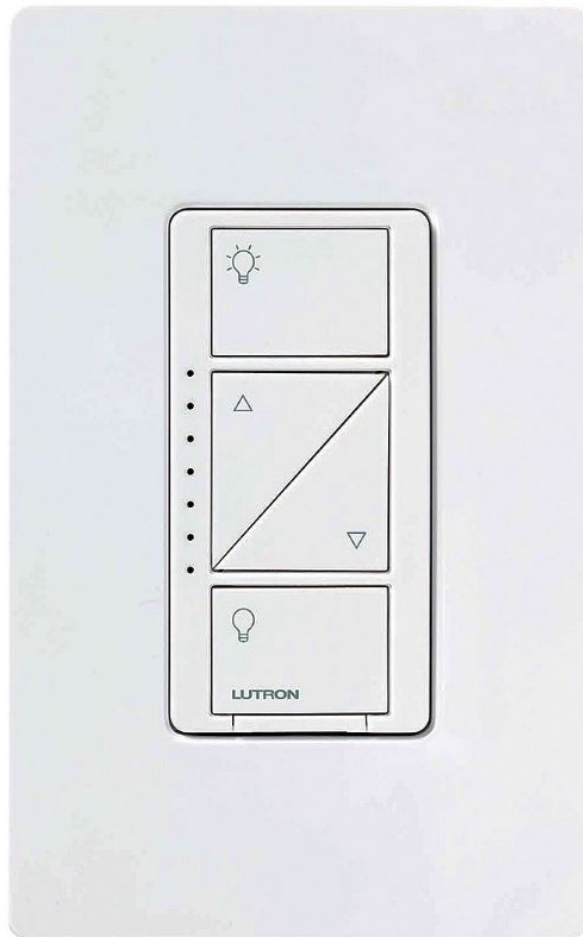
LUTRON PD-6WCL Caseta Wireless In-Wall Dimmer with Pico Remote Control User Guide

[Home](#) » [Lutron](#) » LUTRON PD-6WCL Caseta Wireless In-Wall Dimmer with Pico Remote Control User Guide 



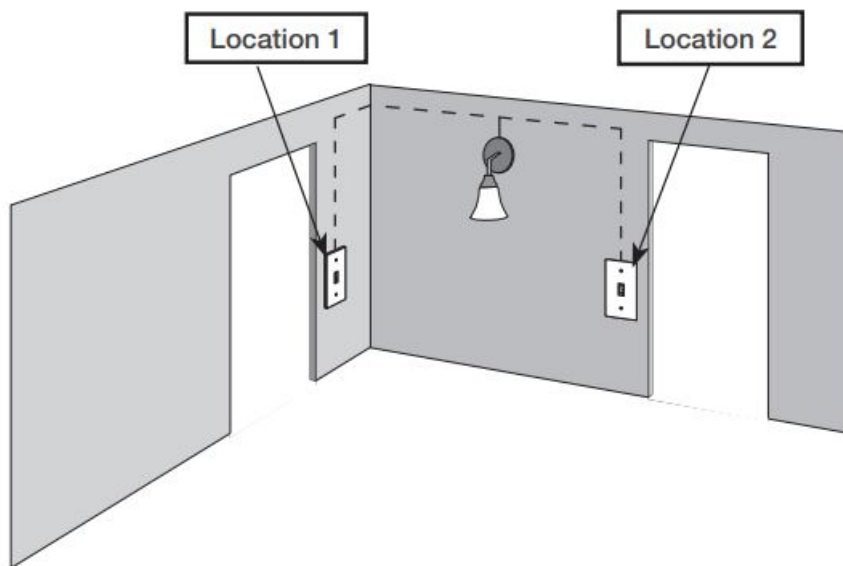
Contents

- 1 [LUTRON PD-6WCL Caseta Wireless In-Wall Dimmer with Pico Remote Control](#)
- 2 [Identify existing wiring](#)
- 3 [What you need for a 3-way installation](#)
- 4 [Choose a location for your Caséta Wireless in-wall dimmer](#)
- 5 [Turn power off at circuit breaker](#)
- 6 [Remove existing switch from wall](#)
- 7 [Tag and disconnect wires from the existing switch](#)
- 8 [Remove side sections \(if necessary\)](#)
- 9 [Connect the Caséta Wireless in-wall dimmer](#)
- 10 [Mount the Caséta Wireless in-wall dimmer](#)
- 11 [Attach the wallplate](#)
- 12 [Remove existing switch from wall at Location 2](#)
- 13 [Tag and disconnect wires from the switch](#)
- 14 [Connect the wires](#)
- 15 [Attach the wallplate bracket and Pico remote control](#)
- 16 [Attach the wallplate](#)
- 17 [Turn power on at circuit breaker](#)
- 18 [Press and hold “Off” button on in-wall dimmer](#)
- 19 [Press and hold “Off” button on remote control](#)
- 20 [Pair additional remote controls](#)
- 21 [Schematic Diagram](#)
- 22 [Documents / Resources](#)
- 23 [Related Posts](#)



Identify existing wiring

Two switches control the lights (3-way installation)



Important note:

- If one switch controls the lights (single-pole installation) See quick-start guide that came with your in-wall dimmer
- If three or more switches control the lights(multi-location installation) See page 36 for details

What you need for a 3-way installation



In-wall dimmer
PD-6WCL

+



Claro Wallplate
CW-1

+

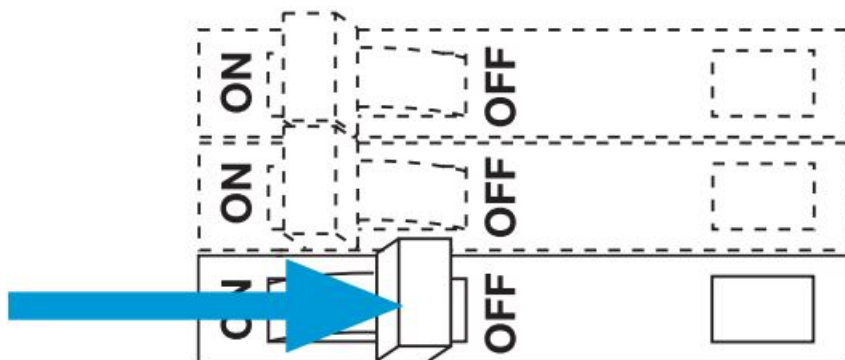


Pico remote control
with wall-mounting kit
PJ2-WALL

Choose a location for your Caséta Wireless in-wall dimmer

Choose which location you want the Caséta Wireless in-wall dimmer installed in. This will be Location 1.

Turn power off at circuit breaker

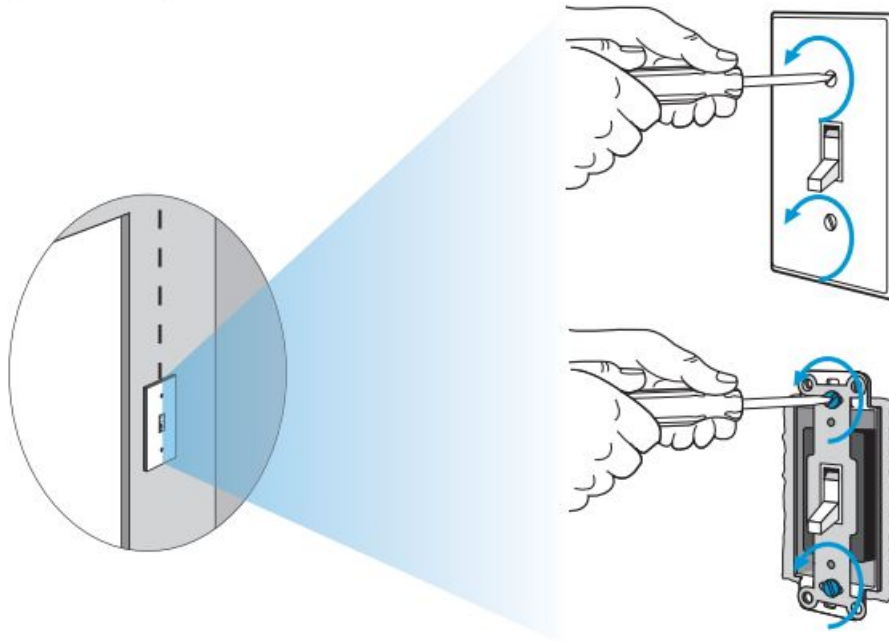


WARNING: Shock Hazard. May result in serious injury or death. Turn off power at circuit breaker before installing the unit.

Remove existing switch from wall

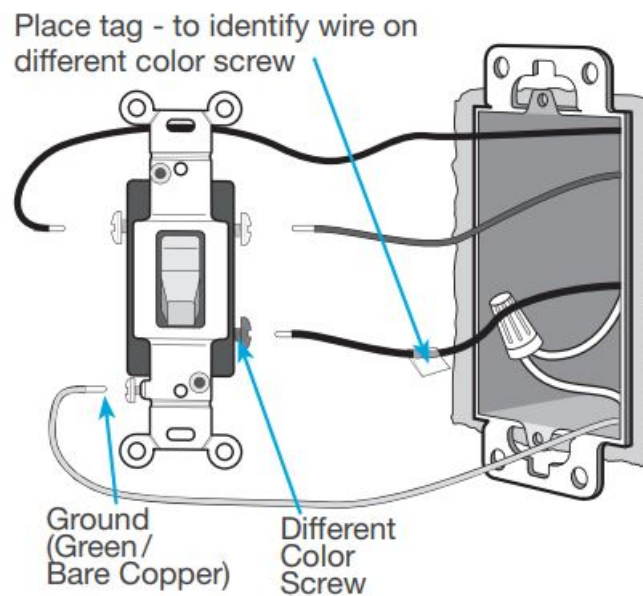
Location 1

Location 1



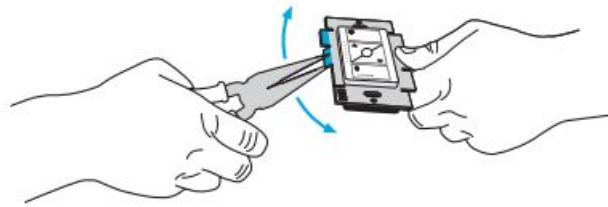
Tag and disconnect wires from the existing switch

Location 1: Place tag – to identify wire on different color screw

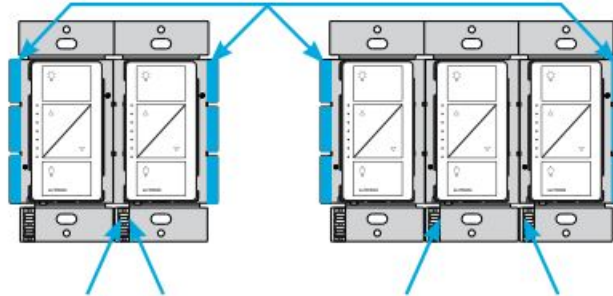


Remove side sections (if necessary)

When installing more than one Caséta Wireless in-wall dimmer in the same wallbox, it is necessary to remove inner side sections prior to wiring. See image and chart below for more information.



Do not remove outside side sections on dimmers at the end of gang.



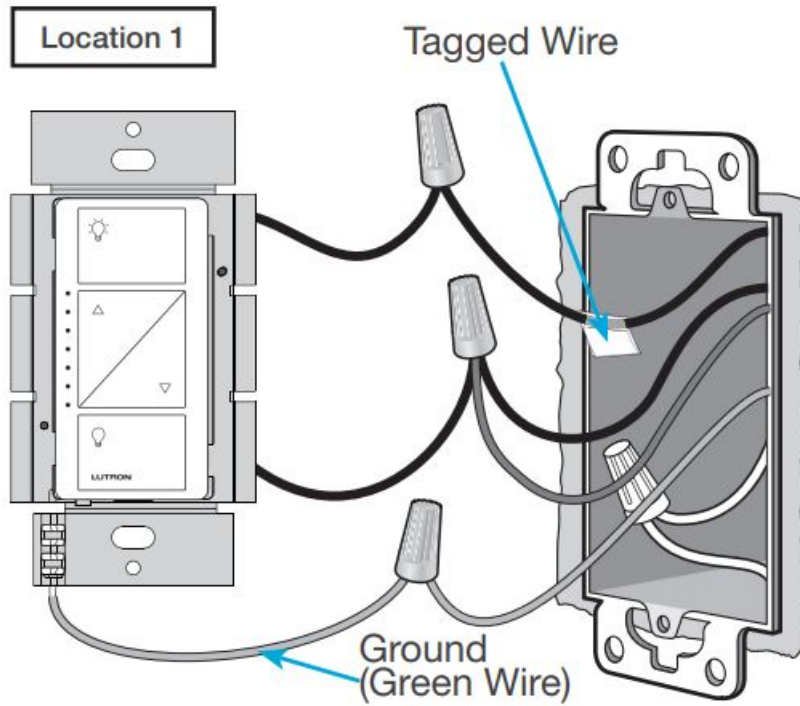
Each in-wall dimmer has inside side sections removed.

Dimmer in the middle has all side sections removed.

Important note: Removing side sections reduces the in-wall dimmer's maximum wattage rating. See the chart below for maximum wattage information.

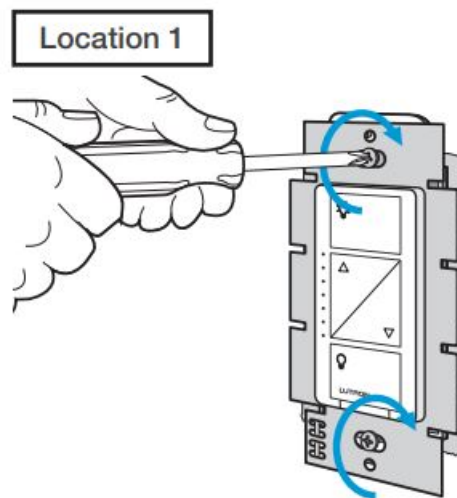
Total Dimmable LED Wattage		Incandescent/Halogen Total Wattage		
		A	B	C
0 W	+	600 W	500 W	400 W
1 W – 25 W	+	500 W	400 W	300 W
26 W – 50 W	+	400 W	300 W	200 W
51 W – 75 W	+	300 W	200 W	100 W
76 W – 100 W	+	200 W	100 W	50 W
101 W – 125 W	+	100 W	50 W	0 W
126 W – 150 W	+	0 W	0 W	0 W

Connect the Caséta Wireless in-wall dimmer



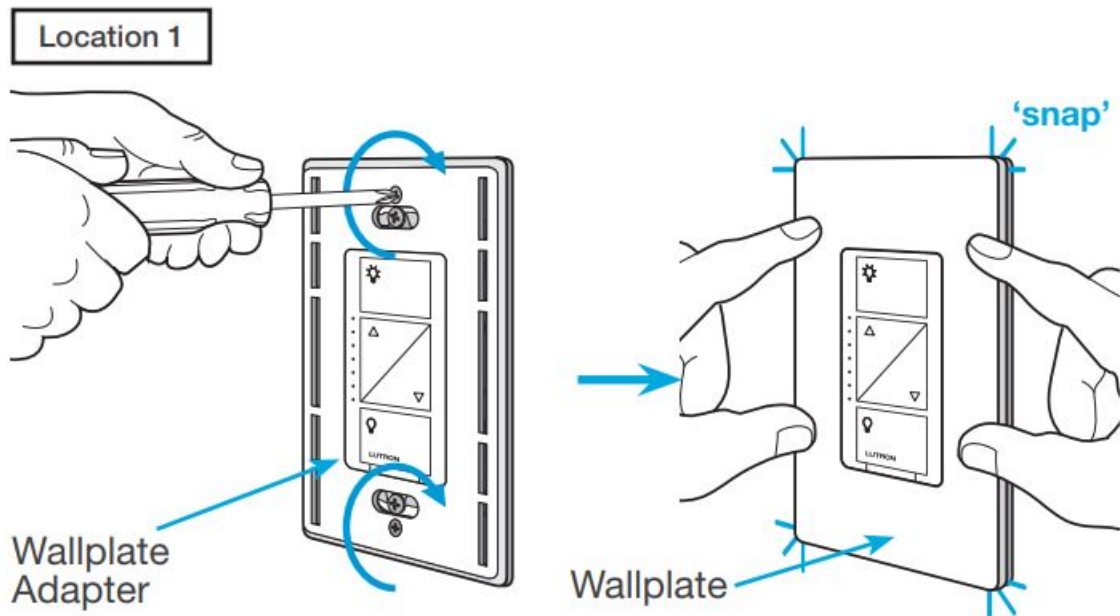
Mount the Caséta Wireless in-wall dimmer

Location 1



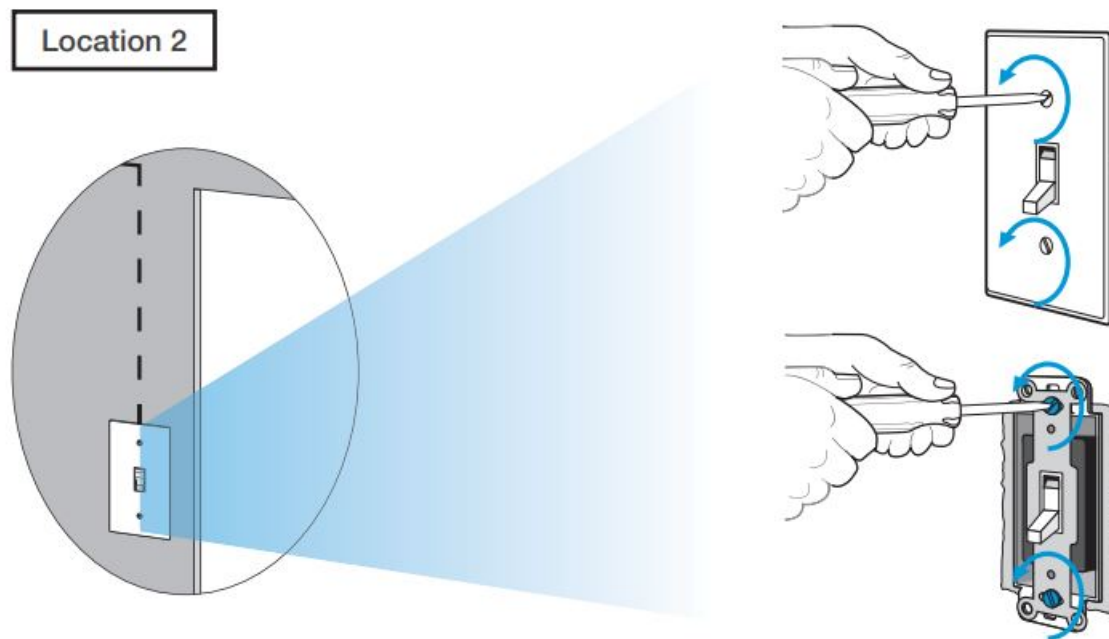
Attach the wallplate

Location 1



Remove existing switch from wall at Location 2

Location 2

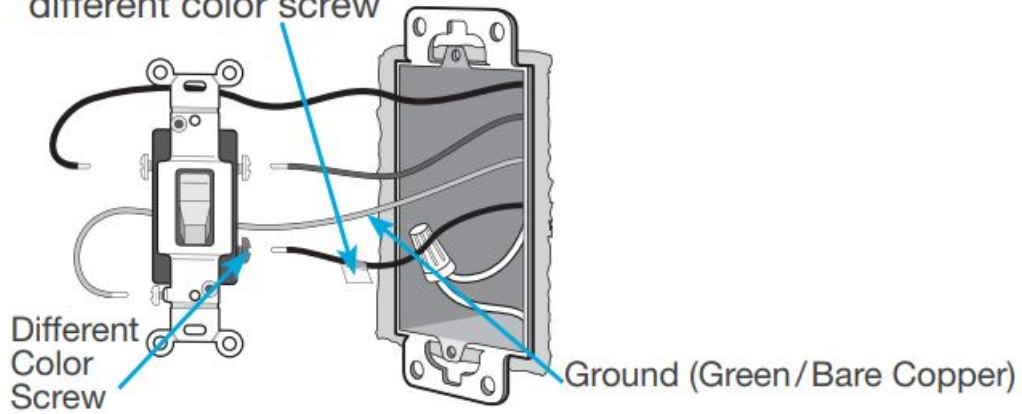


Tag and disconnect wires from the switch

Location 2

Location 2

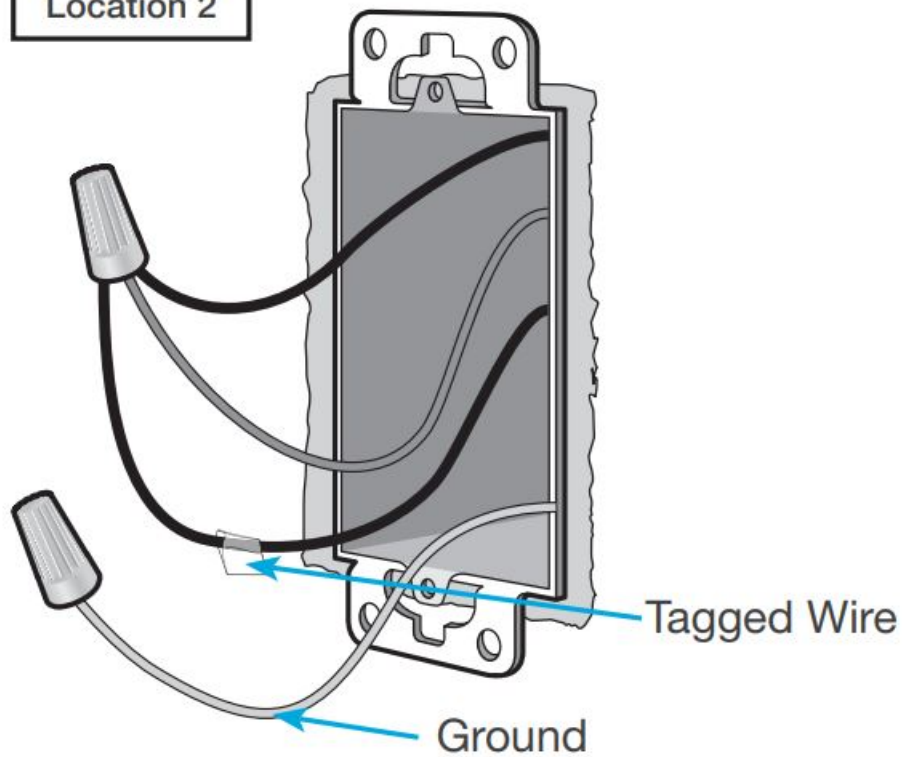
Place tag - to identify wire on different color screw



Connect the wires

Location 2

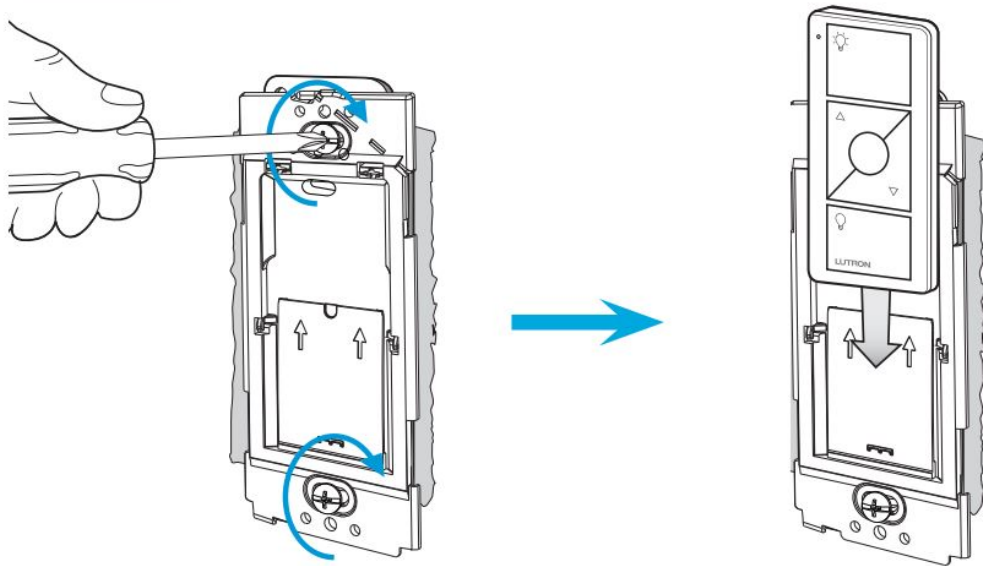
Location 2



Attach the wallplate bracket and Pico remote control

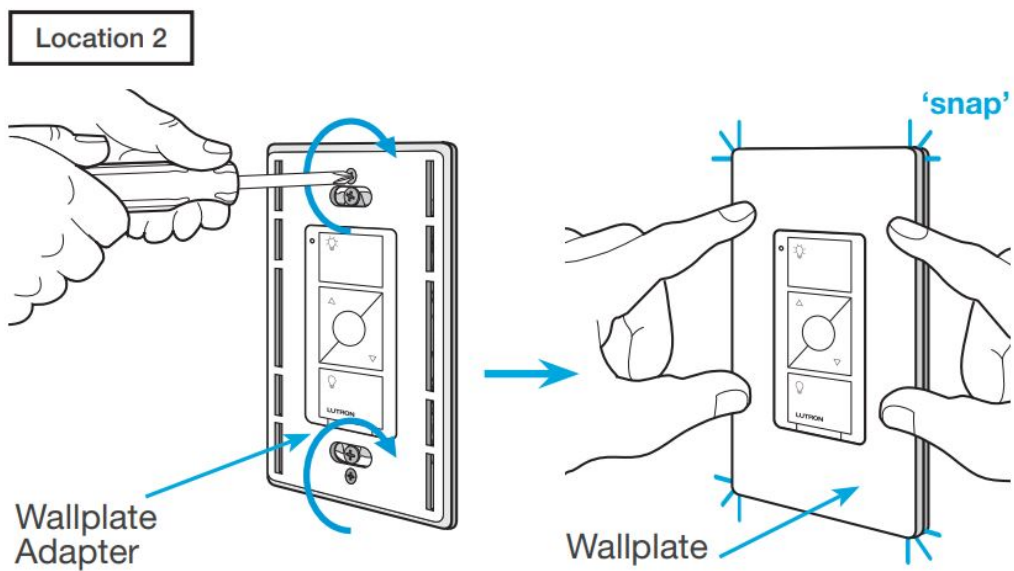
Location 2

Location 2

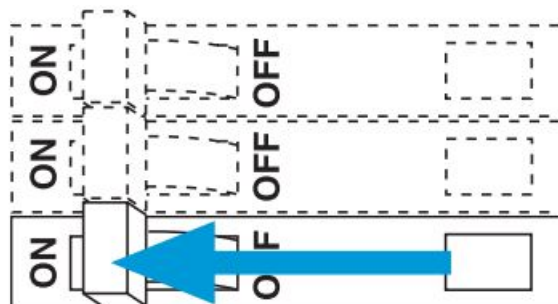


Attach the wallplate

Location 2



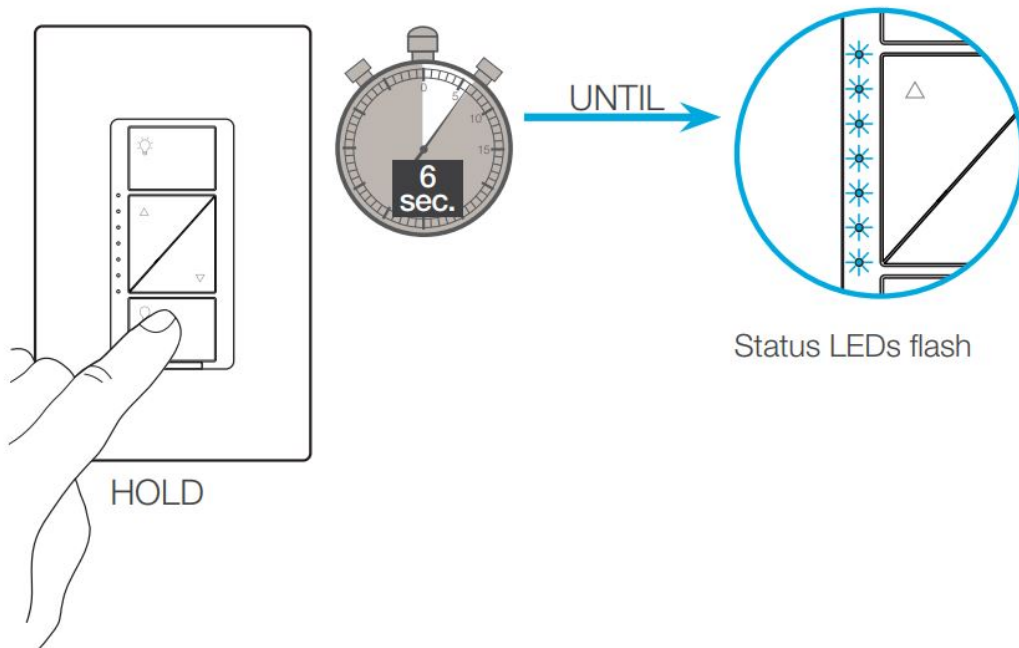
Turn power on at circuit breaker



Press and hold "Off" button on in-wall dimmer

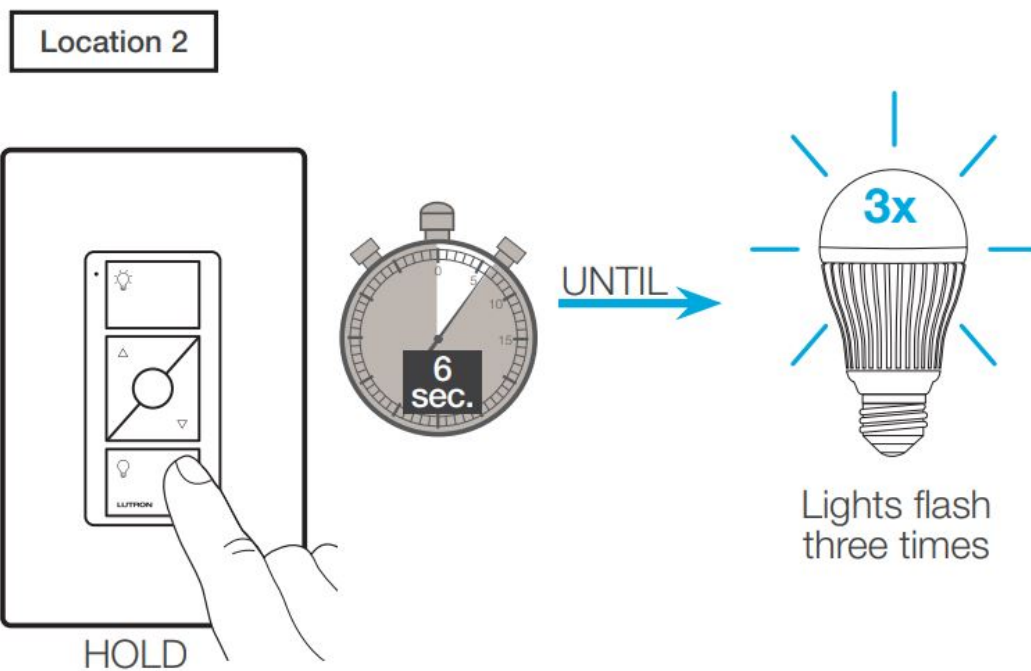
Location 1

Location 1



Press and hold “Off” button on remote control

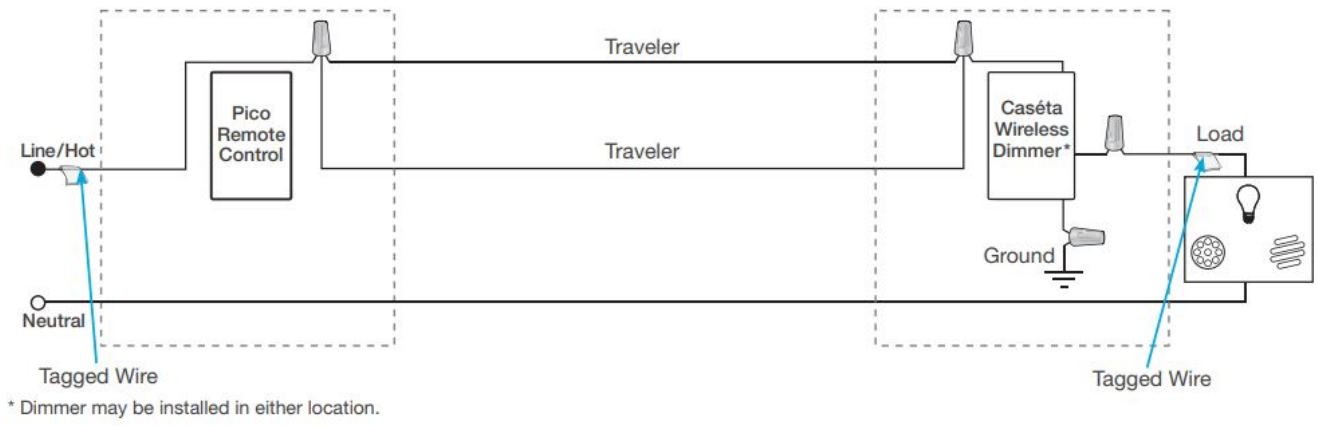
Location 2



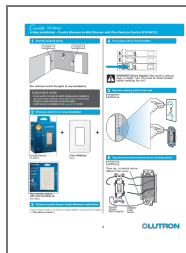
Pair additional remote controls

Repeat steps 17 and 18 to pair additional remote controls.

Schematic Diagram



Documents / Resources



[LUTRON PD-6WCL Caseta Wireless In-Wall Dimmer with Pico Remote Control](#) [pdf] User Guide
PD-6WCL, Caseta Wireless In-Wall Dimmer with Pico Remote Control