



LUTRON DVRF-PKG1S Claro Smart Switch and Pico Paddle Remote User Guide

[Home](#) » [Lutron](#) » LUTRON DVRF-PKG1S Claro Smart Switch and Pico Paddle Remote User Guide 



quick-start guide
Claro Smart Switch and
Pico Paddle Remote

Contents

- [1 DVRF-PKG1S Claro Smart Switch and Pico Paddle Remote](#)
- [2 Tools you'll need](#)
- [3 Pre-Installation](#)
- [4 Wall Surface Installation](#)
- [5 Using your switch](#)
- [6 FCC / IC Information](#)
- [7 Troubleshooting](#)
- [8 Documents / Resources](#)
 - [8.1 References](#)

DVRF-PKG1S Claro Smart Switch and Pico Paddle Remote



0302107 Rev. A

Welcome— and thank you for purchasing a Claro smart switch and Pico paddle remote kit.

Wiring Wizard



<https://qrco.de/bdmspl>

Double your warranty

Love Caséta Wireless controls? Have ideas for making them better? Tell us what you think and we'll extend your warranty by 1 year. www.casetawireless.com/register

Contents supplied (DVRF-PKG1S)

Switch
(DVRF-5NS)



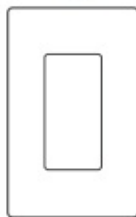
Pico paddle remote
(PJ2-P2B)



Wallbox adapter
(PICO-WBX-ADAPT)



Claro wallplate
(CW-1)



(A) Large wire
connectors (x6)



(B) Small wire
connector (x1)



(C) Silver 6-32 x 7/8 in
machine screws (x4)



(D) Black 6-20 x 1.25 in
wood screws (x2)



Jumper
wire



(E) Wall anchors (x2)

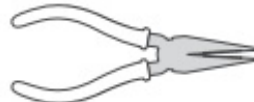


Tools you'll need

Flat-head screwdriver



Pliers









Phillips-head screwdriver



Drill and drill bit
3/16 in (5 mm)



Supported Loads (120 V~)
DVRF-5NS

	LED: up to 5 A		Incandescent / Halogen: up to 600 W
	MLV: up to 600 VA		ELV: up to 600 W
	Fluorescent: up to 5 A		General Purpose Fan: up to 3 A

Important note:

1. The switch is ULR Listed for use with all magnetic and electronic fluorescent ballasts.
2. The maximum lamp wattage is determined by the efficiency of the transformer, with 70%–85% as typical. For actual transformer efficiency, contact either the fixture or transformer manufacturer. The total VA rating of the transformer(s) shall not exceed the VA rating of the switch.
 When ganging, no derating is required.


Pre-Installation

Identify installation type

	Option 1: Wireless 3-Way / Single-Pole + Pico Paddle Remote
	Option 2: Wireless 3-Way / Replace Mechanical 3-way Switch with the Pico Paddle Remote
	Option 3: Wireless Multi-Location / Retain Mechanical 3-Way Switch + Pico Paddle Remote
	Option 4: Wired Multi-Location [3-Way / 4-Way with Accessory Switch(es)] + Pico Paddle Remote For lights switched follow the "W"

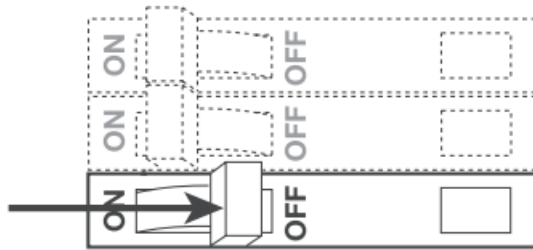
Installing your in-wall switch (main location)

Disconnect power

 **WARNING: SHOCK HAZARD.**

May result in serious injury or death.

Turn off power at circuit breaker or fuse before installing.



Important wiring note:

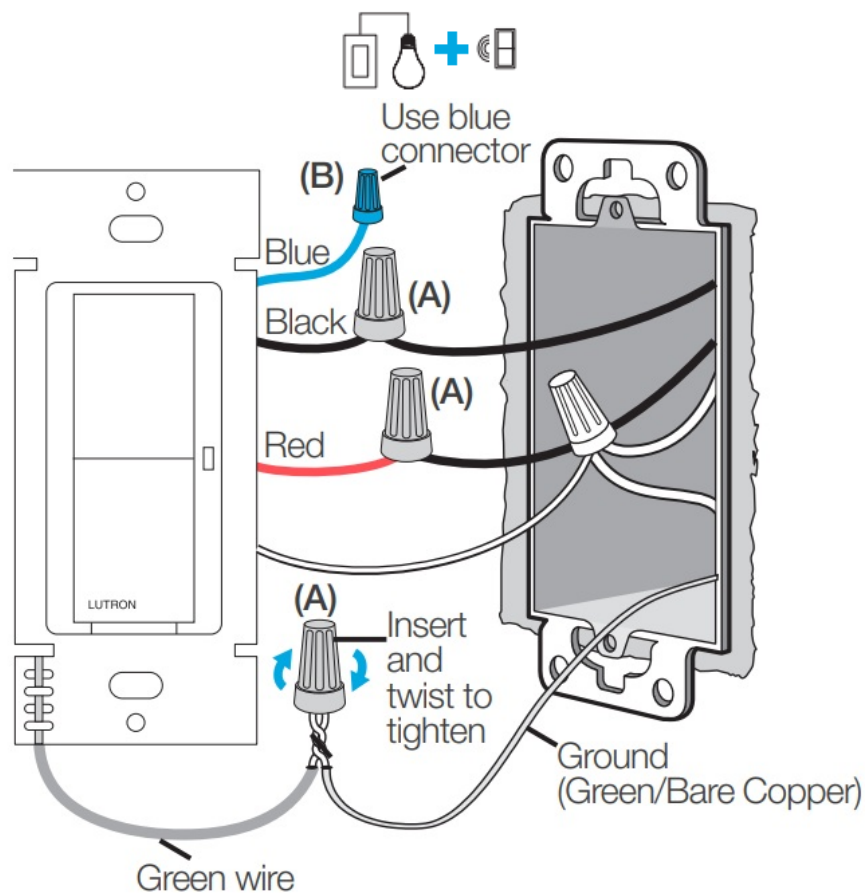
Some lights have one wall switch— called single-pole, while others have two wall switches— called 3-way (such as stair lights, which have a switch at both the top and bottom of the stairs). Be sure to pay close attention to the appropriate wiring diagrams in the following steps.

To access more detailed information and step-by-step instructions for specific wiring scenarios please use the “Wiring Wizard” QR code to the left.

Option 1: Wireless 3-way / single pole + Pico paddle remote

For lights switched from one location.

NOTE: Red and black wires on switch are interchangeable.

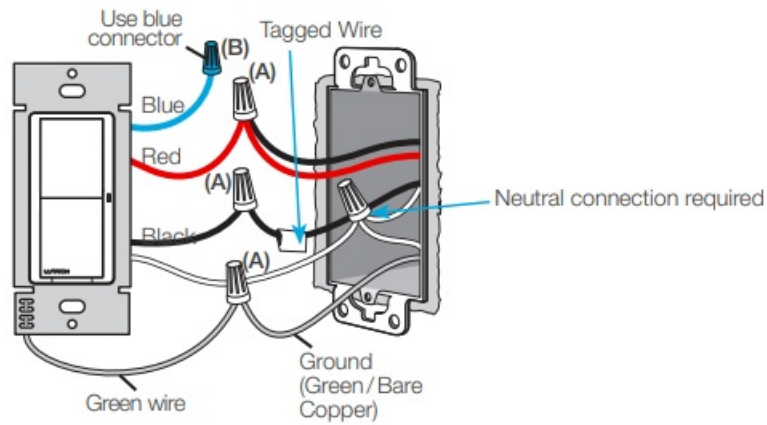


Option 2: Wireless 3-way / replace mechanical 3-way switch with the Pico paddle remote

For lights switched from one wired location and one wireless location.

IMPORTANT: Before disconnecting the existing devices, tag the wire connected to the different colored screw (typically a black wire, but wire colors vary, and labeled COM). This is the Common wire.





NOTE: Red switch wire must be tied to load side.

If the switch does not work once you're all done, turn off power and flip the red and black wires.

Option 3: Wireless multi-location / retain mechanical 3-way switch + Pico paddle remote

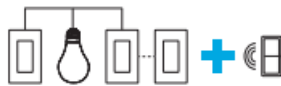
For lights switched from two wired locations with a wireless control from one or more remote locations. Follow the "Wiring Wizard" QR code for detailed instructions.



<https://qrco.de/bdmspl>

Option 4: 3-way/4-way with Claro smart accessory switch(es) + Pico paddle remote

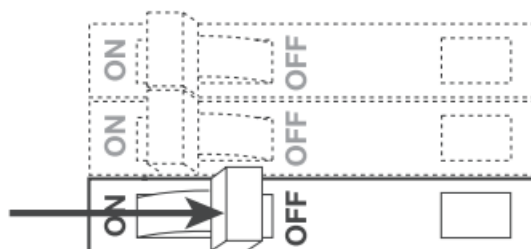
For lights switched from two or more wired locations with a wireless control from one or more remote locations. See Claro Smart Accessory Switch Installation Guide (model DVRF-AS) for details on installing accessory switches. See section A, "Over Wall box Installation" for replacing any switch location with a Pico paddle remote. See section B, "Wall Surface Installation" for adding additional points of control using the Pico paddle remote.



Installing your Pico paddle remote (secondary location)

A. Over Wall box Installation replacing existing switch (3-way applications) with Pico paddle remotes

1. Ensure power is still **OFF**



WARNING! Shock Hazard.

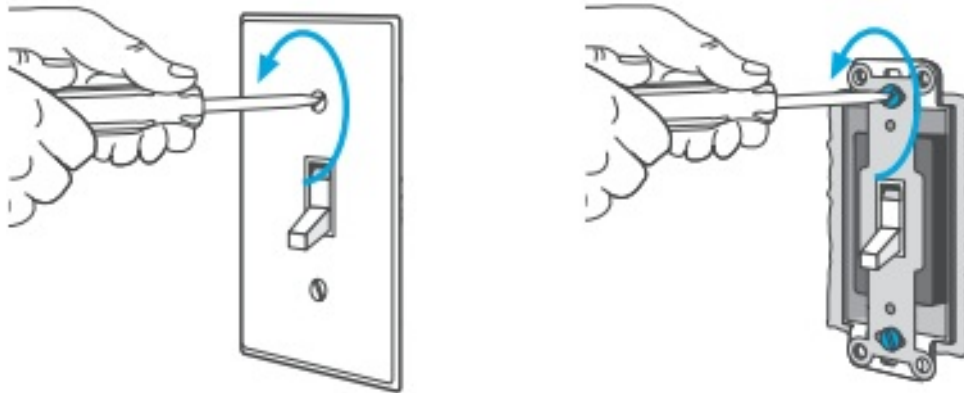
May result in serious injury or death. Turn off the power before installing. NOTE: If cover plate is removed, only install over wall surface.

DO NOT install over wall box.

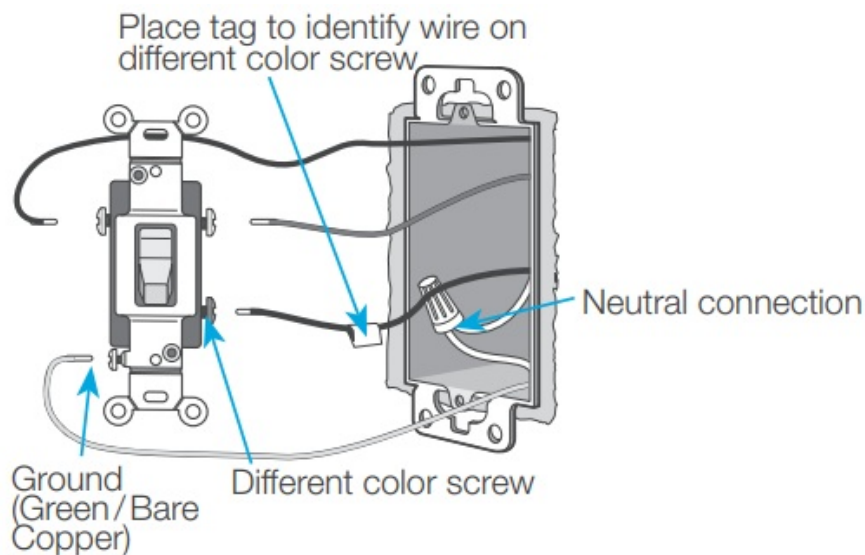
2. Unscrew existing switch from wall

Remove the wallplate.

Remove the screws securing the switch and pull it away from the wall (do not disconnect wires).

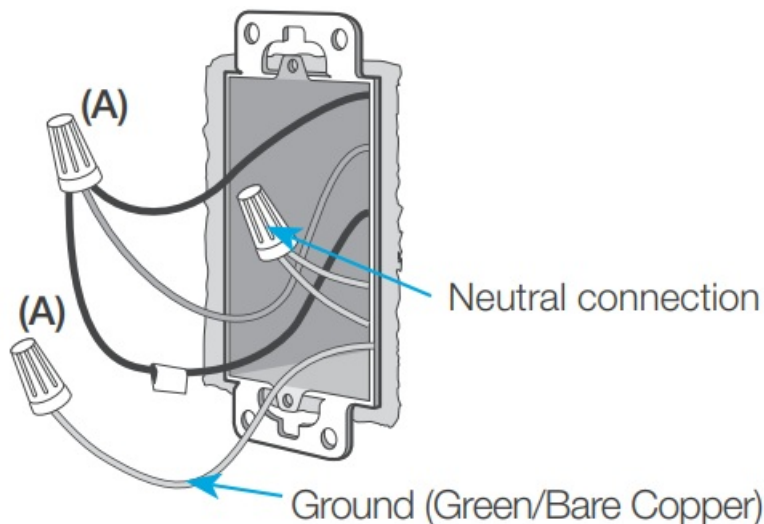


3. Disconnect wires

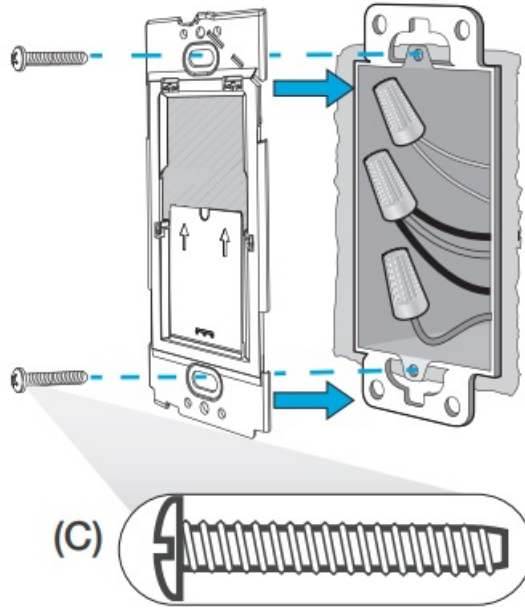


4. Connect the wires

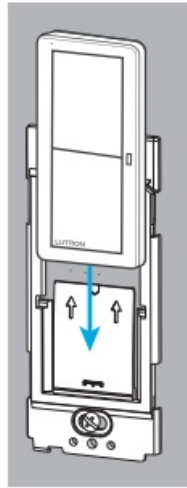
Using the provided wire connectors, connect the wires removed from the switch (EXCEPT for the ground wire and the neutral wires). Cap the ground wire and cap the neutral wires.



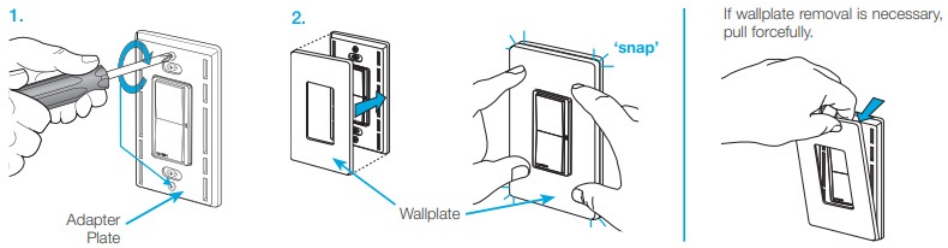
5. Mount the wall box adapter



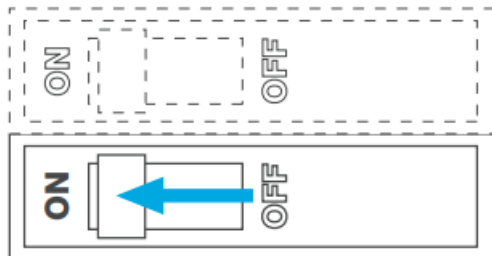
6. Slide Pico paddle remote onto wall box adapter



7. Attach Wallplate

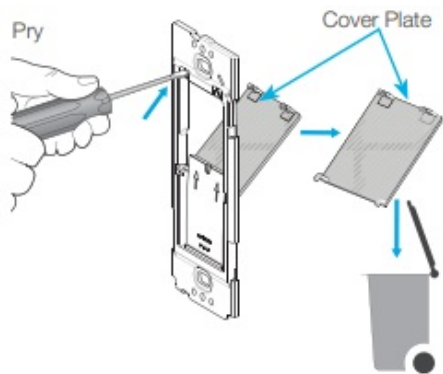


8. Restore power

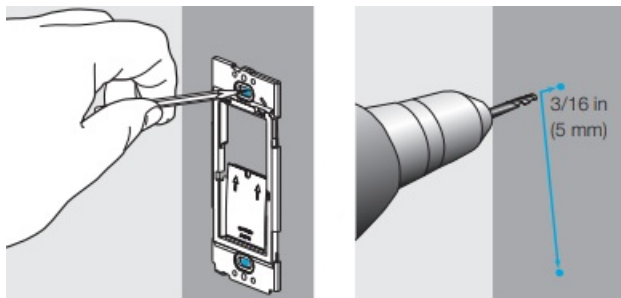


Wall Surface Installation

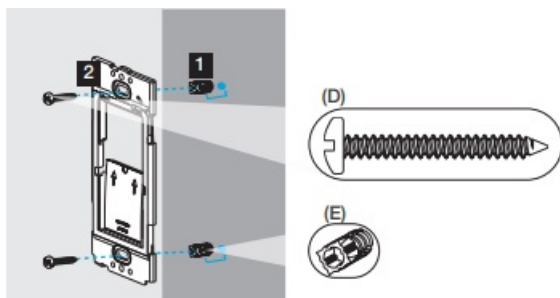
1. Remove cover plate



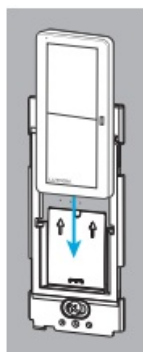
2. Attach Wallplate



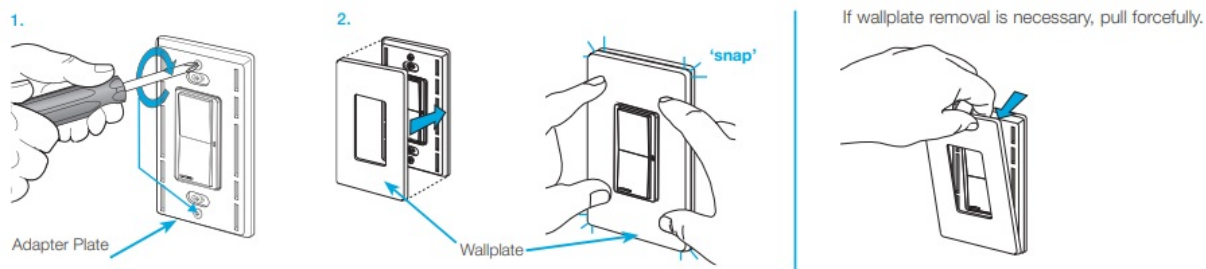
3. Mount the wall box adapter



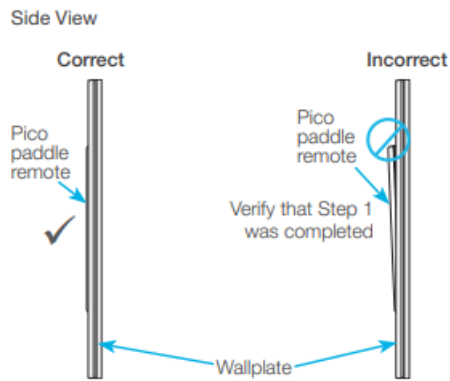
4. Slide Pico paddle remote onto wallbox adapter



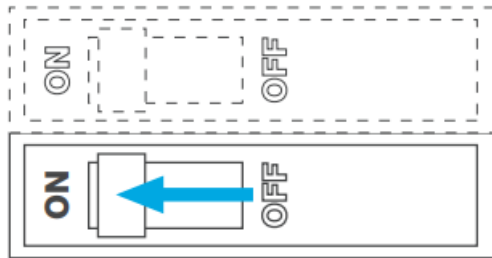
5. Attach Wallplate



6. Check mounting



7. Restore power



To Use your Caséta by Lutron System

Option 1: With a smartphone or tablet (smart hub required, sold separately)

The Caséta Claro smart switch can be controlled from a smartphone when used with the Lutron smart hub (formerly smart bridge) and the Lutron app.

If you are using the switch and remote control with the Lutron smart hub follow the instructions below.



Lutron Smart Hub



Lutron app

1. Download the Lutron app



Search for "Lutron Caséta"







2. Press and hold "off" button



The Lutron app will walk you through setting up your devices.

3. Use the Lutron app to complete ALL remaining steps

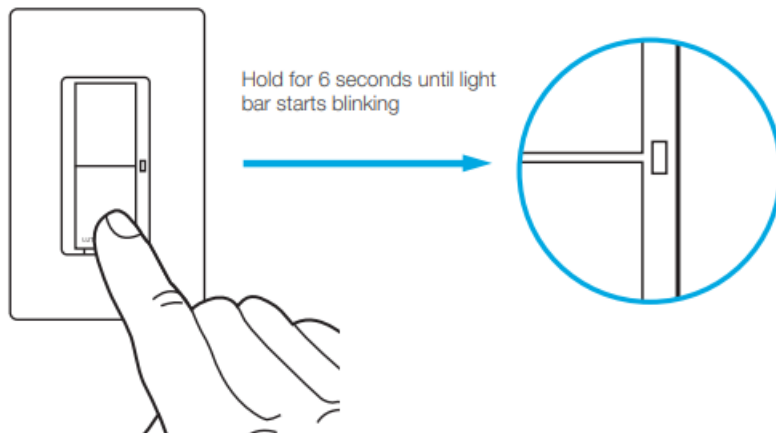
 <p>Add devices</p> <ul style="list-style-type: none">• Pico remotes• Dimmers• Shades	 <p>Control three ways</p>	 <p>Schedule your lights</p>	 <p>Connect while</p>
--	---	---	--

Option 2: Without a smartphone or tablet (smart hub not required)

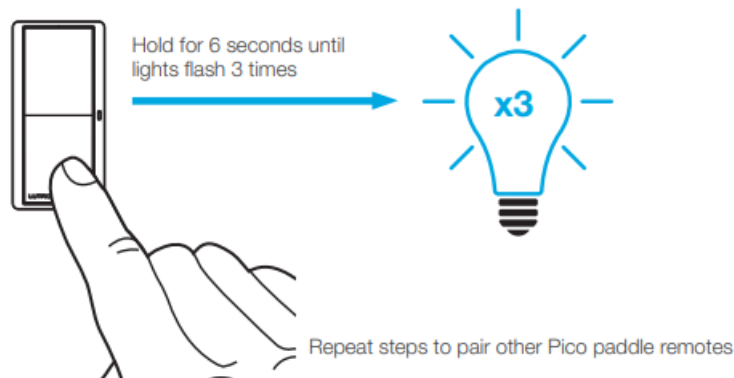
Pairing the switch and Pico paddle remote

Note: This setup MUST be completed if you are not using a smart hub. The Claro smart switch and Pico paddle remote are not paired from the factory.

1. Press and hold “off” button on switch

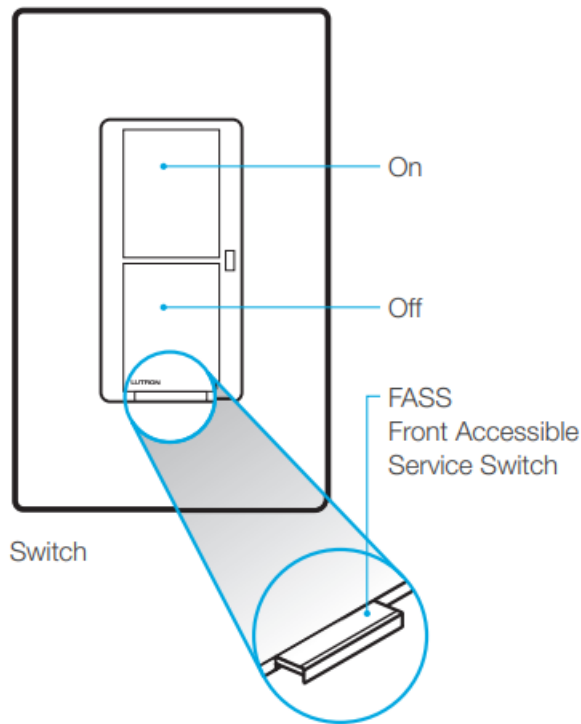


2. Press and hold “off” button on the Pico paddle remote



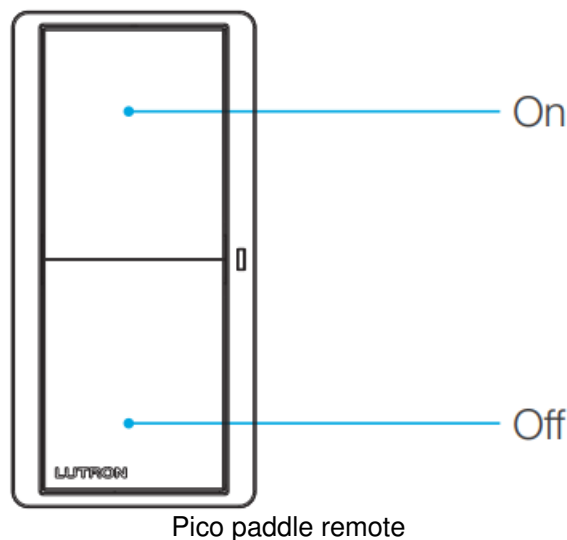
For advanced features, tips for using Caséta switches with LEDs and CFLs, the complete Caséta product line, and more, please visit www.casetawireless.com/features

Using your switch



Replacing light bulbs using FASS

Pull the FASS out on the switch to remove power at the light socket.



Important notes:

1. For indoor use only.
2. Operate between 32 °F (0 °C) and 104 °F (40 °C).

CAUTION

Use only with permanently installed fixtures with dimmable LED, dimmable CFL, halogen, or incandescent lamps. To avoid overheating and possible damage to other equipment, do not use to control receptacles, motor-driven appliances, or transformer-supplied appliances.

⚠ CAUTION: Risk of Fire, Explosion, Leakage, and Burns. Do Not Recharge, Disassemble, Heat Above 212 °F (100 °C) or Incinerate. This product contains a lithium button/coin cell battery.

Keep batteries away from children. If a new or used lithium button/coin cell battery is swallowed or enters the body, it can cause severe internal burns and can lead to death in as little as 2 hours. Always completely secure the battery compartment.

If the battery compartment does not close securely, stop using the product, remove the batteries, and keep the batteries away from children. If you think batteries might have been swallowed or placed inside any part of the

body, seek immediate medical attention. The battery in this device contains Perchlorate Material — special handling may apply. For more information, visit www.dtsc.ca.gov/hazardouswaste/perchlorate

Codes

Install in accordance with all national and local electrical codes.

Grounding

When no “grounding means” exist in wallbox, the National Electrical Code (NEC®) allows a control to be installed as a replacement if 1) a nonmetallic, noncombustible faceplate is used with nonmetallic attachment screws or 2) the circuit is protected by a ground fault circuit interrupter (GFCI). When installing a control according to these methods, cap or remove green wire before screwing control into wallbox.

FCC / IC Information

This device complies with part 15 of the FCC Rules and Industry Canada license-exempt RSS standard(s). Operation is subject to the following two conditions: (1) This device may not cause interference, and (2) this device must accept any interference, including interference that may cause undesired operation. Modifications not expressly approved by Lutron Electronics Co., Inc. could void the user’s authority to operate this equipment.

Note: This equipment has been tested and found to comply with the limits for a Class B digital device, pursuant to part 15 of the FCC Rules. These limits are designed to provide reasonable protection against harmful interference in a residential installation. This equipment generates, uses and can radiate radio frequency energy and, if not installed and used in accordance with the instructions, may cause harmful interference to radio communications. However, there is no guarantee that interference will not occur in a particular installation. If this equipment does cause harmful interference to radio or television reception, which can be determined by turning the equipment off and on, the user is encouraged to try to correct the interference by one or more of the following measures:

- Reorient or relocate the receiving antenna.
- Increase the separation between the equipment and receiver.
- Connect the equipment into an outlet on a circuit different from that to which the receiver is connected.
- Consult the dealer or an experienced radio/TV technician for help.

Device Ratings

In-wall switch	Pico paddle remote
DVRF-5NS	PJ2-P2B
120 V~ 50/60 Hz	3 V- 10 mA (1) CR2032 battery (included)

Troubleshooting

Symptoms	Probable cause and action
Light does not turn on or switch LED does not light up.	<ul style="list-style-type: none"> • Red and black wires on the switch are reversed. • Pico paddle remote PJ2-P2B 3 V- 10 mA (1) CR2032 battery (included) • Light bulb(s) burned out. • Breaker is OFF or tripped. • Light not properly installed. • Wiring error. • FASS on the switch is in the Off position.
Light does not respond to Pico remote.	<ul style="list-style-type: none"> • The switch failed to pair with Pico remote; see Pairing the switch and Pico paddle remote. • The switch is already at the light level the Pico remote is sending. • The Pico remote is outside the 30 ft (9 m) operating range. • The Pico remote battery is low. • The Pico remote battery is installed incorrectly.
Load is Off and the status LED is blinking 4 times, pause, and repeats.	<ul style="list-style-type: none"> • The switch is in an Over Temperature Protection (OTP) mode. • Ensure the switch is not overloaded. • Reset the switch by using the FASS, Front Accessible Service Switch; See Using your switch section. Pull out the FASS and push it back in.

Go to www.casetawireless.com/support for additional troubleshooting suggestions.

Lutron, Lutron, Claro, Caséta, Pico, the Caséta logo and FASS are trademarks or registered trademarks of Lutron Electronics Co., Inc. in the US and/or other countries.

All other product names, logos, and brands are property of their respective owners.

© 2023 Lutron Electronics Co., Inc.



2023 Lutron Electronics Co., Inc. 7200 Suter
Road Coopersburg, PA 18036-1299

Documents / Resources

	<p>LUTRON DVRF-PKG1S Claro Smart Switch and Pico Paddle Remote [pdf] User Guide DVRF-PKG1S, DVRF-5NS, DVRF-PKG1S Claro Smart Switch and Pico Paddle Remote, Switch and Pico Paddle Remote, Paddle C, Paddle RemotePJ2-P2B</p>
--	---

References

- [Application Notes | Caséta Wireless | Lutron](#)
- casetawireless.com/register
- [Application Notes | Caséta Wireless | Lutron](#)
- dtsc.ca.gov/hazardouswaste/perchlorate

