



# LUTRON 0302052 Smart Hub Pico Remote Control and Dimmer User Guide

[Home](#) » [Lutron](#) » LUTRON 0302052 Smart Hub Pico Remote Control and Dimmer User Guide 

## Contents

- 1 LUTRON 0302052 Smart Hub Pico Remote Control and Dimmer
- 2 PRODUCT INFORMATION
- 3 Tools Required
- 4 Installation Instructions for Lights with One Wall Switch (Single Pole)
- 5 Maximum Wattage Derating Chart (120 V~ 50/60 Hz)
- 6 Double your warranty
- 7 Contents supplied
- 8 Tools you'll need
- 9 Installing your dimmer
- 10 Using your controls
- 11 Using your Caséta by Lutron kit
- 12 Pairing the dimmer and Pico remote control
  - 12.1 Device Ratings
- 13 Troubleshooting
- 14 Documents / Resources
  - 14.1 References
- 15 Related Posts



**LUTRON 0302052 Smart Hub Pico Remote Control and Dimmer**



## PRODUCT INFORMATION

- The Lutron Smart Hub, Pico Remote Control & Dimmer is a smart home device that allows you to control the lighting in your home remotely. This package includes a dimmer, a Claro wallplate, a Pico remote control, wire connectors, screws, power supply, and an Ethernet cable. It works with energy-efficient dimmable light bulbs such as LED up to 150 W, Halogen up to 600 W, and Incandescent up to 600 W.
- If you're using dimmable LED light bulbs and experiencing flickering or turning off, please visit [www.casetawireless.com/lowend](http://www.casetawireless.com/lowend) information on adjusting the dimmer for the best bulb performance. For a complete list of compatible dimmable LEDs, please visit [www.casetawireless.com/bulblast](http://www.casetawireless.com/bulblast).

## Tools Required

- Flat-head screwdriver
- Pliers
- Phillips-head screwdriver

## Installation Instructions for Lights with One Wall Switch (Single Pole)

1. Turn power off at circuit breaker!
2. Remove existing switch from the wall. Remove the wallplate from switch. Remove the switch and pull it away from the wall.
3. Disconnect all three wires\* from the switch.
4. Ganging and Derating: Multi-gang installations may reduce the dimmer's maximum wattage rating. See the chart below for maximum wattage information.
5. Connect the bare copper (or green) ground wire from the wallbox to the green wire on the dimmer using one of

the large supplied wire connectors.

6. Connect either of the remaining wires from the wallbox to the black wire on the dimmer using one of the large supplied wire connectors.
7. Connect the remaining wire from the wallbox to the red wire on the dimmer using one of the large supplied wire connectors.
8. Cap the blue wire coming from the dimmer with the small supplied wire connector. The blue wire is not used for single pole installations.
9. Mount the dimmer. Use the mounting screws provided, leaving them loose for this step.
10. Attach the adapter to the dimmer using the screws provided.
11. Tighten the mounting screws on the dimmer.
12. Snap on the wallplate.
13. Turn power on at circuit breaker.

\* For maximum wattage information when mixing light bulb types see [www.casetawireless.com/ganging](http://www.casetawireless.com/ganging).

#### Maximum Wattage Derating Chart (120 V~ 50/60 Hz)

Load Type	Single Gang	Double Gang	Triple Gang
LED or Incandescent & Halogen	150 W	150 W or* 500 W	150 W or* 400 W

For installation instructions when two or more switches are controlling a light, please visit [www.casetawireless.com/3way](http://www.casetawireless.com/3way) for complete installation instructions and how-to videos.

**Welcome—and** thank you for purchasing a Caséta dimming kit.

Before you install the dimmer, please watch the installation video at [www.casetawireless.com/support](http://www.casetawireless.com/support)

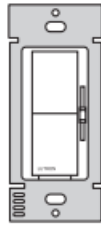
We hope you enjoy the convenience of Caséta!

#### Double your warranty

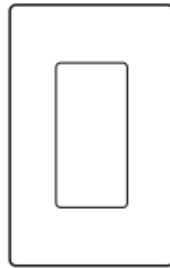
Love Caséta dimmers? Have ideas for making them better? Tell us what you think and we'll extend your warranty by 1 year. [www.casetawireless.com/register](http://www.casetawireless.com/register)

#### Contents supplied

Dimmer  
(DVRF-6L)



Claro wallplate  
(CW-1)



Pico remote  
control  
(PJ2-3BRL)



Wire  
connectors



Screws



Lutron  
Smart Hub  
(L-BDG2 or  
L-BDGPRO2)



Power Supply  
(T-5DC-USB)

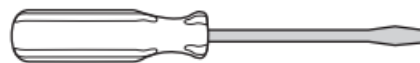


Ethernet  
Cable

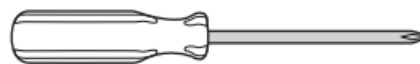


## Tools you'll need

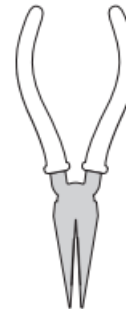
Flat-head screwdriver



Phillips-head screwdriver



Pliers



**Works with energy efficient dimmable light bulbs:**

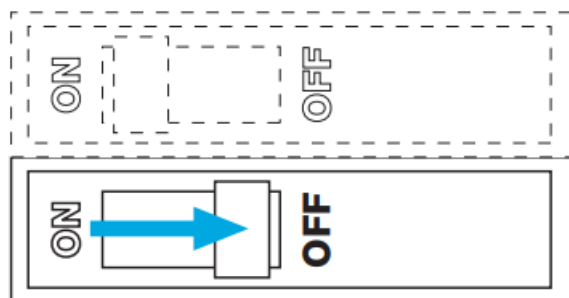


- NOTE: You can mix and match dimmable LED, halogen, and incandescent light bulbs with Caséta dimmers.
- Dimmable LED light bulbs vary in their dimming performance. If you're using these bulbs and they flicker or turn off, please visit [www.casetawireless.com/lowend](http://www.casetawireless.com/lowend) for information on adjusting the dimmer for best bulb performance.
- For a complete list of compatible dimmable LEDs, please visit [www.casetawireless.com/bulblast](http://www.casetawireless.com/bulblast)

## Installing your dimmer

### Installation for lights with one wall switch (single pole)

#### 1. Turn power off at circuit breaker!



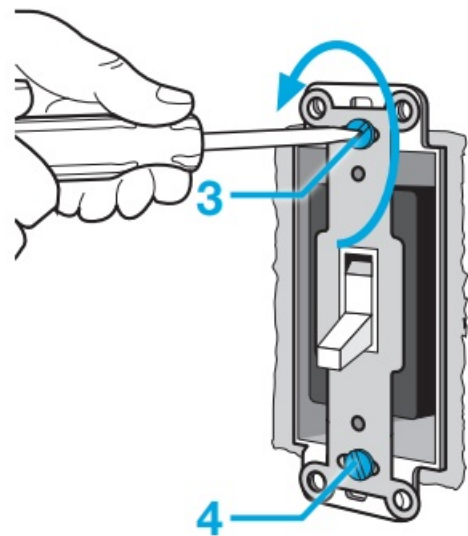
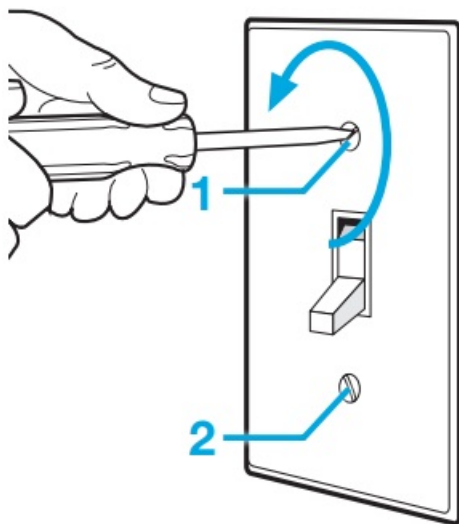
**WARNING: SHOCK HAZARD!** May result in Serious Injury or Death. Turn off power at circuit breaker or fuse before installing.

Important note:

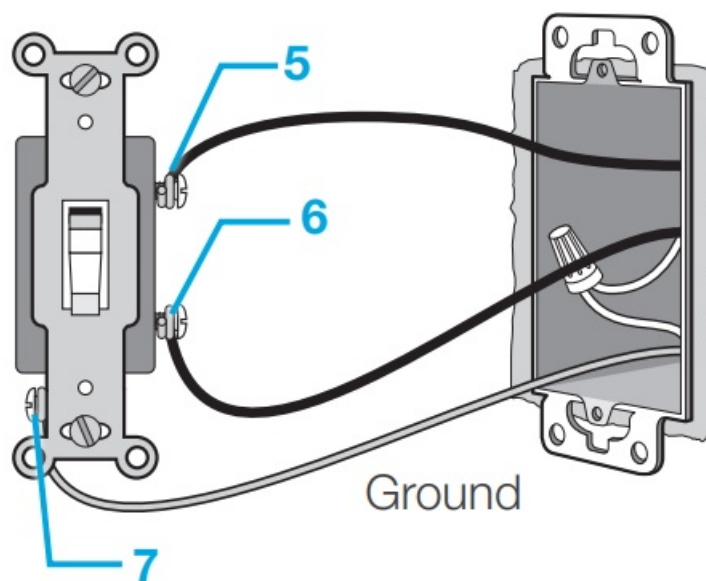
We've included instructions for when a single switch is controlling the lights. For installation instructions when two or more switches are controlling a light, please visit [www.casetawireless.com/3way](http://www.casetawireless.com/3way) for complete installation instructions and how-to videos.

#### 2. Remove existing switch from wall

- Remove the wallplate from switch. Remove the switch and pull it away from the wall.



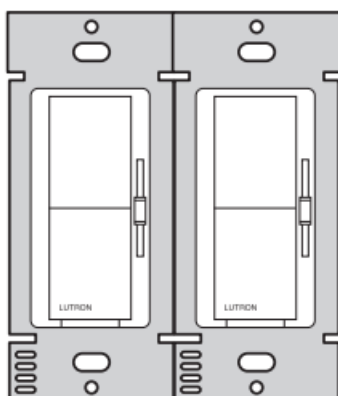
- Disconnect all three wires\* from the switch.



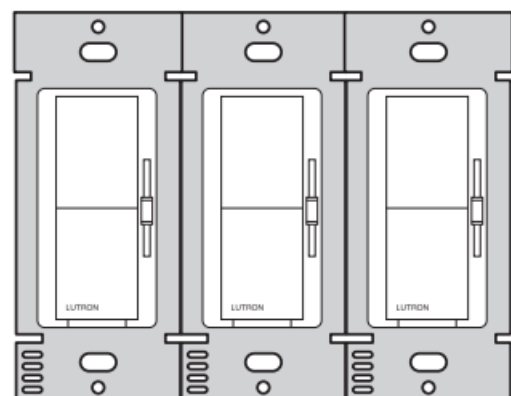
\* If your switch has more than 3 wires attached, see “Installing Caséta in a 3-way switch application” video at [www.casetawireless.com/3way](http://www.casetawireless.com/3way)

### 3. Ganging and Derating

#### Double Gang



#### Triple Gang



**Important note:**

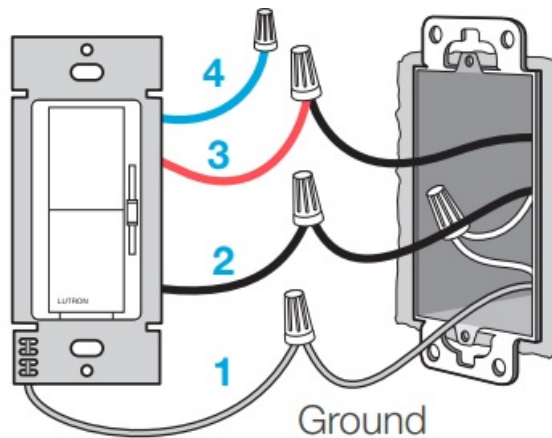
Multi-gang installations may reduce the dimmer's maximum wattage rating. See the chart below for maximum wattage information.

Maximum\* wattage derating chart (120 V~ 50/60 Hz)

Load Type	Single gang	Double gang	Triple gang
LED	150 W	150 W	150 W
<b>or*</b>			
Incandescent & Halogen	600 W	500 W	400 W

For maximum wattage information when mixing light bulb types see [www.casetawireless.com/ganging](http://www.casetawireless.com/ganging)

#### 4. Connect the dimmer

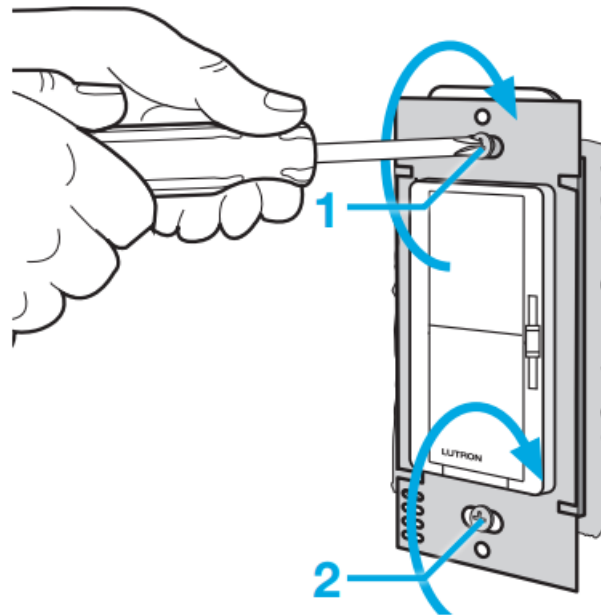


1. Connect the bare copper (or green) “ground” wire from the wallbox to the green wire on the dimmer using one of the large supplied wire connectors.
2. Connect either of the remaining wires from the wallbox to the black wire on the dimmer using one of the large supplied wire connectors.
3. Connect the remaining wire from the wallbox to the red wire on the dimmer using one of the large supplied wire connectors.
4. Cap the blue wire coming from the dimmer with the small supplied wire connector. The blue wire is not used for single pole installations.

**Note:** Wire colors depicted in this install guide may not match what is in your walls.

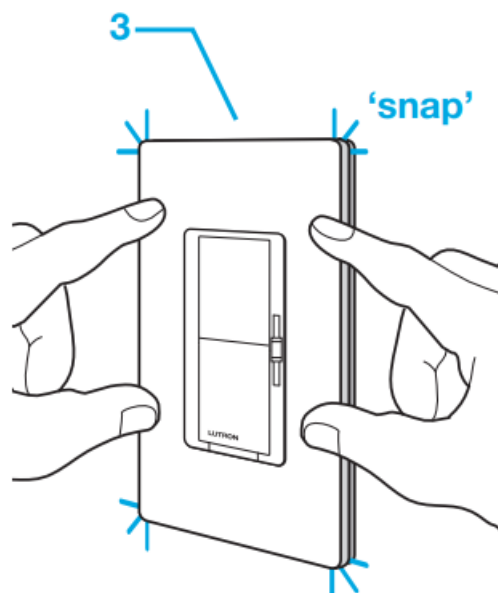
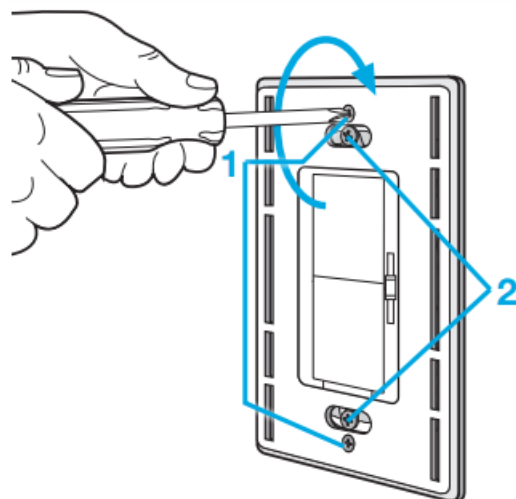
#### 5. Mount the dimmer

Use the mounting screws provided, leaving them loose for this step.



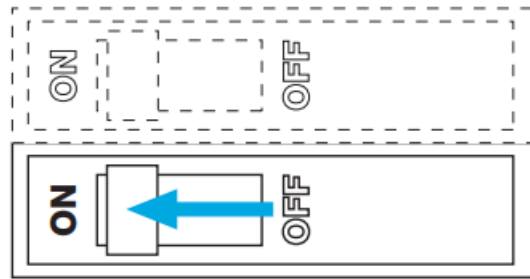
#### 6. Attach the wallplate

1. Attach the adapter to the dimmer using the screws provided.
2. Tighten the mounting screws on the dimmer.
3. Snap on the wallplate.

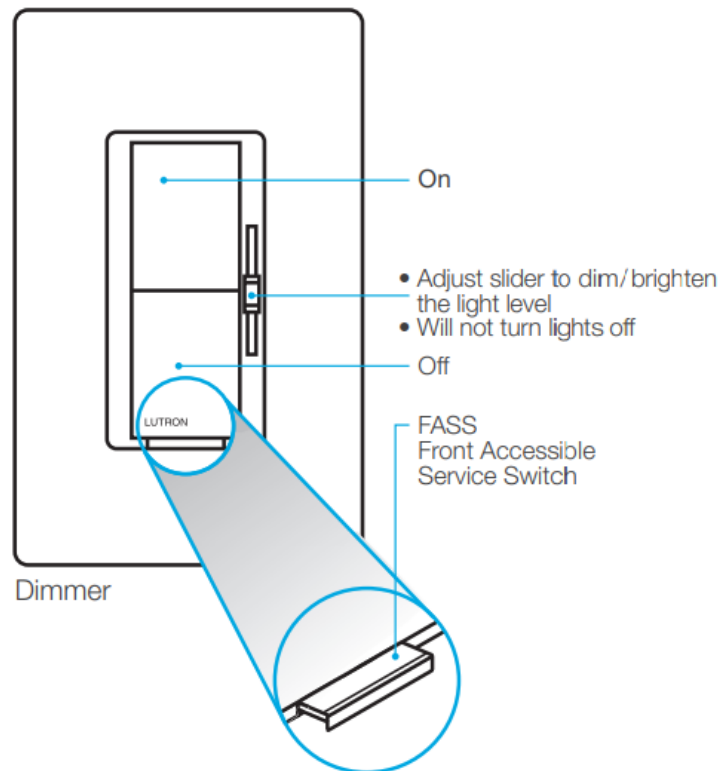


#### 7. Turn power on at circuit breaker



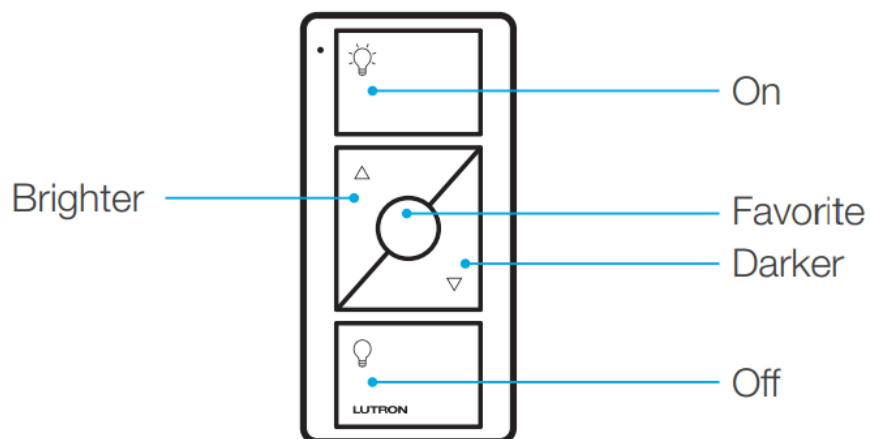


## Using your controls



## Replacing light bulbs using FASS

Pull the FASS out on the dimmer to remove power at the light socket.



Pico remote control (sold separately)

To restore the original factory settings please go to [www.lutron.com/restore](http://www.lutron.com/restore)

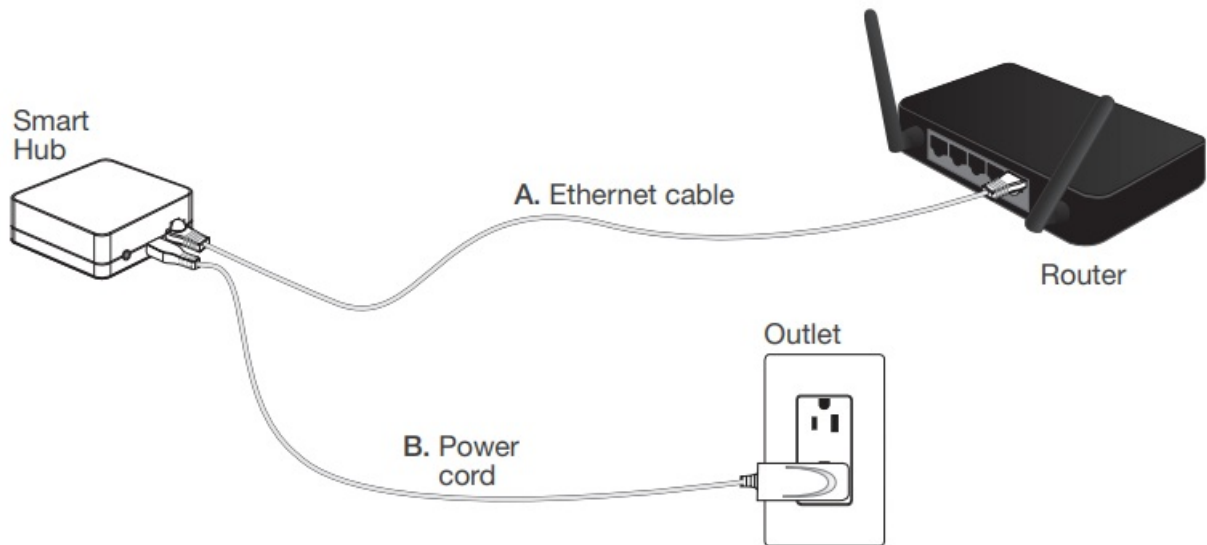
### Important notes:

1. For indoor use only.
2. Operate between 32 °F (0 °C) and 104 °F (40 °C).

### Using your Caséta by Lutron kit

#### 1. Install the Lutron Smart Hub

- A. Connect the smart hub to your Wi-Fi router using the Ethernet cable.
- B. Connect the power cord to the smart hub and plug it into an outlet.



#### 2. Download the Lutron app and walk through setup

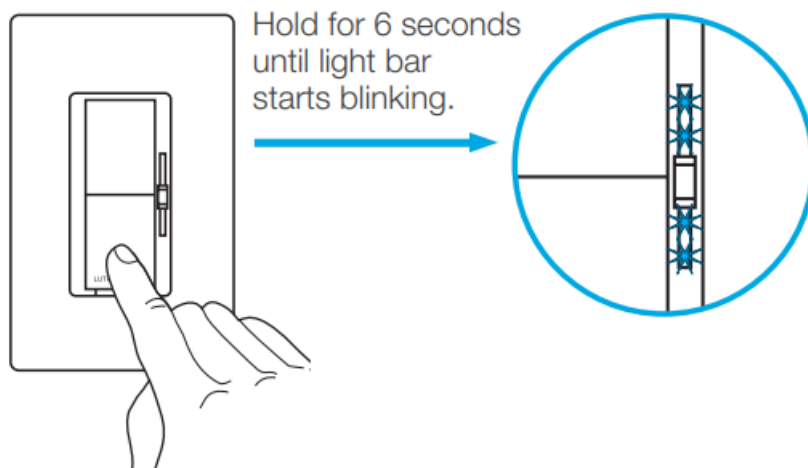


Search for "Lutron Caseta" →

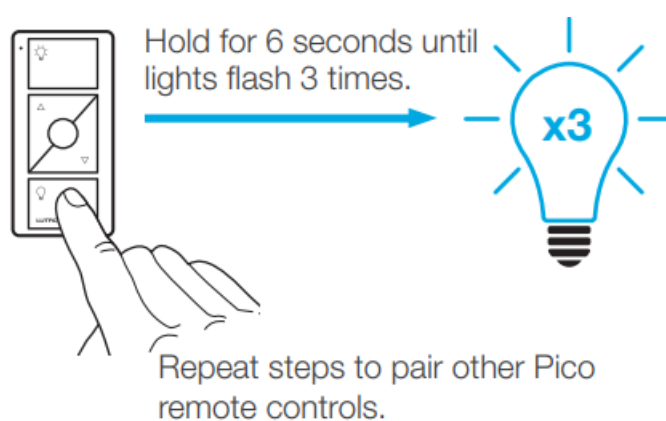


### Pairing the dimmer and Pico remote control

1. Press and hold "off" button on dimmer



## 2. Press and hold “off” button on remote



## Device Ratings

- **Dimmer:** Pico remote control
- **DVRF-6L:** PJ2-3BRL
- **120 V~ 50/60 Hz:** 3 V- 10 mA (1) CR2032 battery
- **Lutron Smart Hub\*:** (included)
- **L-BDG2 or L-BDGPRO2 5 V- 300 mA:** Power supply T-5DC-USB
- **Wallplate Bracket PICO-WBX-ADAPT:**
  - **Input:** 100–240 V~ 50/60 Hz 100 mA
  - **Output:** 5 V- 550 mA

## Troubleshooting

Symptoms	Probable cause and action

Light does not turn on or dimmer LEDs do not light up.	<ul style="list-style-type: none"> <li>• Light bulb(s) burned out.</li> <li>• Breaker is OFF or tripped.</li> <li>• Light not properly installed.</li> <li>• Wiring error.</li> <li>• FASS switch on the dimmer is in the Off position.</li> </ul>
Light does not respond to Pico remote control.	<ul style="list-style-type: none"> <li>• The dimmer is not properly paired with the Pico remote control; <i>The Pico remote control can be paired with the dimmer using the Lutron app.</i></li> <li>• The dimmer is already at the light level the Pico remote control is sending.</li> <li>• The Pico remote control is outside the 30 ft (9 m) operating range.</li> <li>• The Pico remote control battery is low.</li> <li>• The Pico remote control battery is installed incorrectly.</li> </ul>
<ul style="list-style-type: none"> <li>• Bulbs turn off while being dimmed.</li> <li>• Bulbs turn on at high light level but do not turn on at a low light level.</li> <li>• Bulbs flicker or flash when dimmed to a low light level.</li> </ul>	<p>Verify bulbs are marked dimmable and visit <a href="http://www.casetawireless.com/lowend">www.casetawireless.com/lowend</a> for information on adjusting the dimmer for best bulb performance.</p>
Load is Off and the light bar blinks 4 times, pauses, and repeats.	<p>The dimmer is in Over Temperature Protection (OTP) mode.</p> <ul style="list-style-type: none"> <li>• See Step 3 Ganging and Derating. Ensure that the dimmer is not overloaded.</li> <li>• Reset the dimmer by using the Front Accessible Service Switch (FASS); See Using your Controls section. Pull out the FASS and push it back in.</li> </ul>

#### Important notes:

1. For indoor use only
2. Operate between 32 °F (0 °C) and 104 °F (40 °C)

### CAUTION

Use only with permanently installed fixtures with dimmable LED, halogen, or incandescent lamps. To avoid overheating and possible damage to other equipment, do not use to control receptacles, motordriven appliances, or transformer-supplied appliances.

**!CAUTION:** Risk of Fire, Explosion, Leakage, and Burns. Do Not Recharge, Disassemble, Heat Above 212 °F (100 °C) or Incinerate. This product contains a lithium button/coin cell battery. Keep batteries away from children. If a new or used lithium button/coin cell battery is swallowed or enters the body, it can cause severe internal burns and can lead to death in as little as 2 hours. Always completely secure the battery compartment. If the battery compartment does not close securely, stop using the product, remove the batteries, and keep the batteries away from children. If you think batteries might have been swallowed or placed inside any part of the body, seek immediate medical attention. The battery in this device contains Perchlorate Material — special handling may apply.

For more information, visit [www.dtsc.ca.gov/hazardouswaste/perchlorate](http://www.dtsc.ca.gov/hazardouswaste/perchlorate)

### Codes

Install in accordance with all national and local electrical codes.

### Grounding

- When no “grounding means” exist in wallbox, the National Electrical Code (NEC®) allows a control to be installed as a replacement if 1) a nonmetallic, noncombustible faceplate is used with nonmetallic attachment screws or 2) the circuit is protected by a ground fault circuit interrupter (GFCI). When installing a control according to these methods, cap or remove green wire before screwing control into wallbox.
- Use of the HomeKit logo means that an electronic accessory has been designed to connect specifically to iPod, iPhone, or iPad, respectively, and has been certified by the developer to meet Apple performance standards. Apple is not responsible for the operation of this device or its compliance with safety and regulatory standards. Please note that the use of this accessory with iPod, iPhone, or iPad may affect wireless performance.

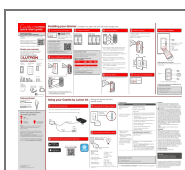
### FCC/IC Information

For FCC/IC information, please visit: [www.lutron.com/fcc-ic](http://www.lutron.com/fcc-ic)

### Warranty

For warranty information, please visit [www.casetawireless.com/warranty](http://www.casetawireless.com/warranty)




### Documents / Resources



[LUTRON 0302052 Smart Hub Pico Remote Control and Dimmer](#) [pdf] User Guide  
0302052 Smart Hub Pico Remote Control and Dimmer, 0302052, Smart Hub Pico Remote Control and Dimmer, Pico Remote Control and Dimmer, Remote Control and Dimmer, Control and Dimmer, Dimmer

### References

-  [Installing Caséta for a light with two switches | Lutron](#)

-  [Lutron Support Center | Lutron](#)
-  [Capacity Derating Charts](#)
-  [casetawireless.com/lowend](#)
-  [casetawireless.com/register](#)
-  [Application Notes | Caséta Wireless | Lutron](#)
-  [casetawireless.com/warranty](#)
-  [dtsc.ca.gov/hazardouswaste/perchlorate](#)
-  [lutron.com/fcc-ic](#)
-  [How to Factory Default Caseta Dimmers, Switches, and Fan Controls | Lutron](#)

Manuals+