



LUTEC 7622220012 Motion Sensor Camera User Manual

[Home](#) » [LUTEC](#) » LUTEC 7622220012 Motion Sensor Camera User Manual 

LUTEC 7622220012 Motion Sensor Camera User Manual

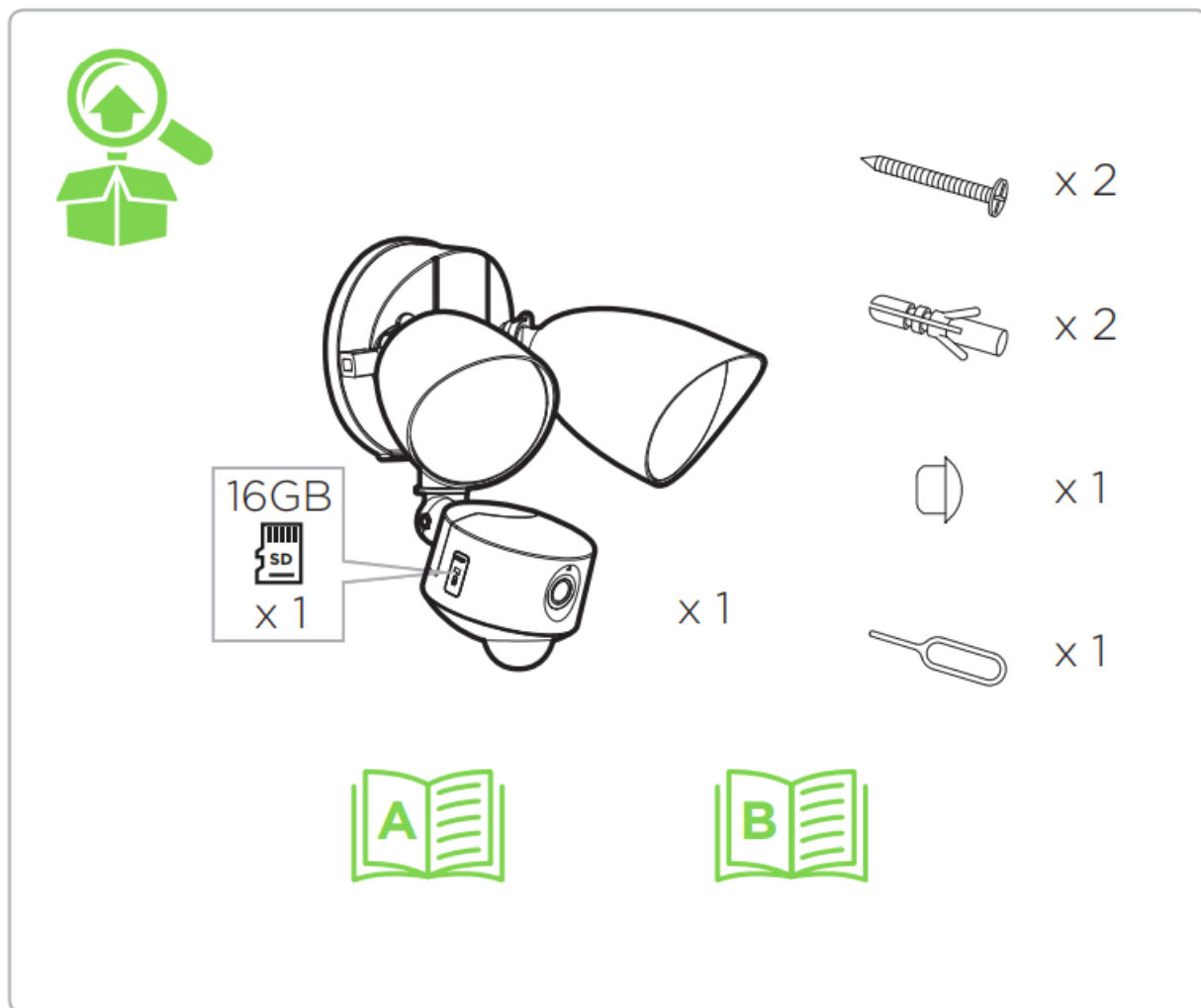


**Thank you !
For your purchase.**

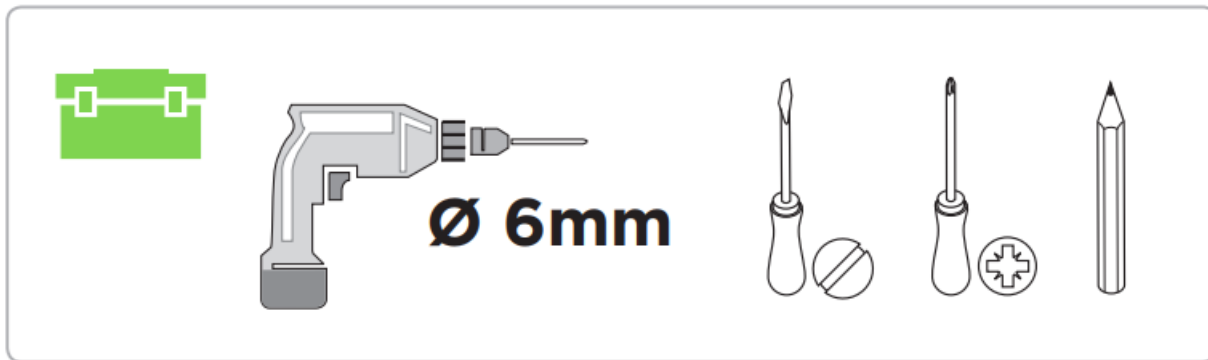
Contents

- 1 What's in the Box
- 2 Included
- 3 Safety Instructions
- 4 Technical Data
- 5 Warranty Conditions
- 6 Installation
- 7 Download the free LUTEC connect App
- 8 Smartspeaker
- 9 Personal Settings & Support
- 10 Tutorials & Help
- 11 SD Card Replacement
- 12 Manual Reset
- 13 Maintenance
- 14 Bluetooth mesh technology
- 15 Legal Notes
- 16 Documents / Resources
 - 16.1 References
- 17 Related Posts

What's in the Box



Included



Safety Instructions

- You can consult the Safety Instructions on our website: www.lutec.com/service/safetyinstructions
- Please scan the QR code underneath. For your convenience you can find these Safety Instructions also in the box.



- This product is fully compliant to the ERP Regulation (EU) 2019/2020 and Amending Regulation (EU) 2021/341.
- **This product contains a light source of energy efficiency class <E>.**

Technical Data

Supply Voltage: 220-240 V~, 50/60 Hz

Bulb Type: LED (19W)

The light source of this luminaire is not replaceable; when the light source reached its end of life the whole luminaire shall be replaced.



NON-REPLACEABLE LIGHT SOURCE



Conformity with all relevant EC Directive requirements

IP44

Splash-proof



Class I product, must be connected to earth.



Waste electrical products should not be disposed of with household waste.

Please recycle where facilities exist. Check with your Local Authority or local store for recycling advice.

Warranty Conditions



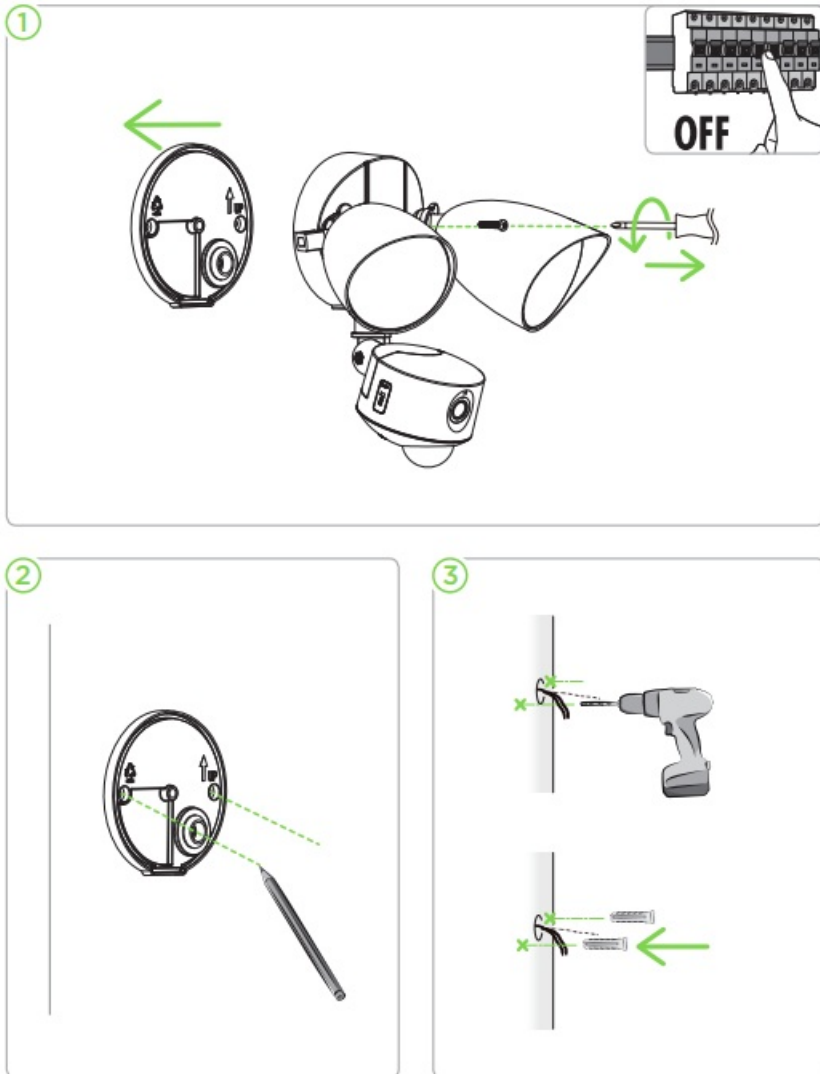
All LUTEC products meet the highest quality requirements and have been subjected to strict quality control. The product are designed, produced and tested in accordance with International & European safety standards. LUTEC Europe NV, Herentalsebaan 425, B-2160 Wommelgem – Belgium (“LUTEC Europe”) will grant an operational warranty under the following terms and conditions:

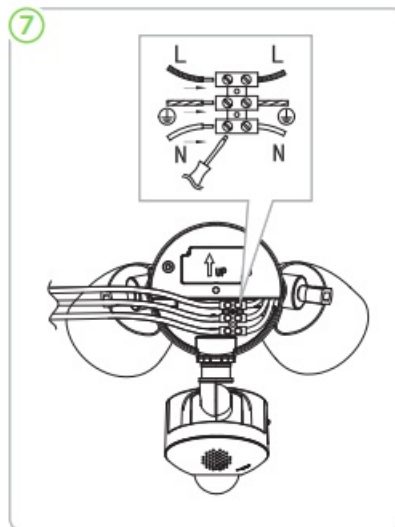
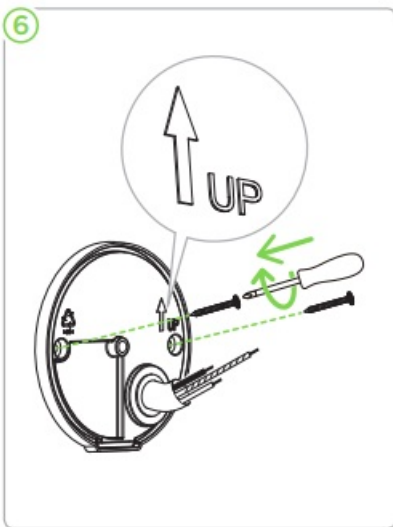
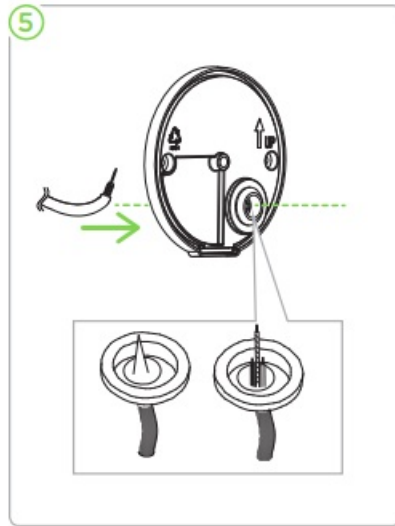
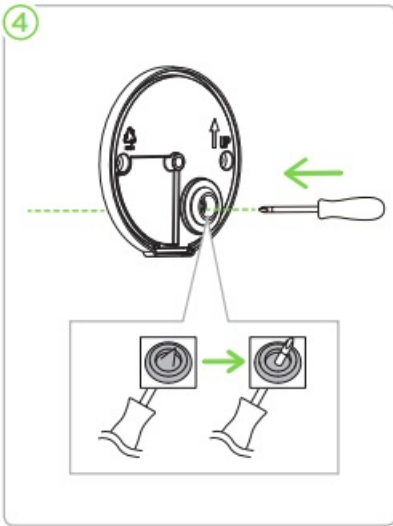
0. The warranty period for LUTEC products is 5 years (2 years for products within the Solar Energy ranges) and starts on the date of purchase. LUTEC offers an extra 15 year anti-corrosion guarantee on all galvanised and resin outdoor luminaires.
1. The guarantee applies to all LUTEC indoor & outdoor lighting purchased within the European Union and/or Switzerland whose packaging is labelled accordingly. Excluded are replaceable bulbs, batteries, starters and other wear & tear parts and consumables. The products are guaranteed against material, manufacturing or design fault whereby the scientific and technical state of the art applicable at the time the products were manufactured is relevant.
2. LUTEC Europe can either repair or replace the product or refund the consumer the purchase price. We will replace the old product with a new product of the same model, type and quality free of charge. If the product purchased is no longer manufactured at the time we are notified of the fault, LUTEC Europe will supply a similar product. We do not refund assembly and disassembly costs, transport costs and other expenses, postage fees and similar costs. Furthermore, the guarantee does not include compensation for damage due to interruption of operation, loss of damage, wasted expenditure, installation and removal costs, etc. We cannot be held liable for transport damage or transport loss.
3. The guarantee only applies if:
 - the products are used as intended;
 - no unauthorised adjustments/modifications are made to the product by a third party;
 - the products are maintained and cared for as specified in the operating instructions;
 - the lights are mounted and installed in accordance with LUTEC’s installation instructions;
 - the replaceable bulbs comply with the standards applicable to such replaceable bulbs and are specifically approved for the intended use (rating plate, installation/assembly instructions);
 - the product surfaces do not display any signs of chemical or physical damage caused by improper handling (e.g. use of unsuitable cleaning agents or sharp objects).
4. In case of warranty, please contact your local dealer/seller from whom you have purchased the product or LUTEC Europe directly. The contact details of the local LUTEC partners can be found on www.lutec.com. The dealer/seller and/or LUTEC Europe must be promptly notified of any defect/fault within 30 days of finding the fault, otherwise we will not recognise the claim. To make a claim under the warranty, submit the proof of

purchase, including the date of purchase and the product model number.

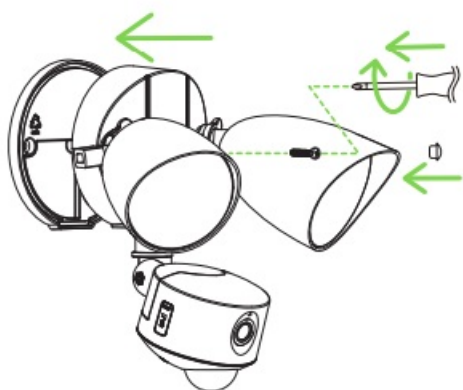
5. Statutory warranty rights remain unaffected by and apply in addition to this guarantee. The same applies to claims against the seller.
6. Full address of the guarantor: LUTEC Europe NV
Herentalsebaan 425 B-2160 Wommelgem – Belgium
Telephone: : +32 (0)3 284 51 62
Email: info@lutec-europe.com info@lutec.com
www.lutec.com www.lutec.com/warranty

Installation

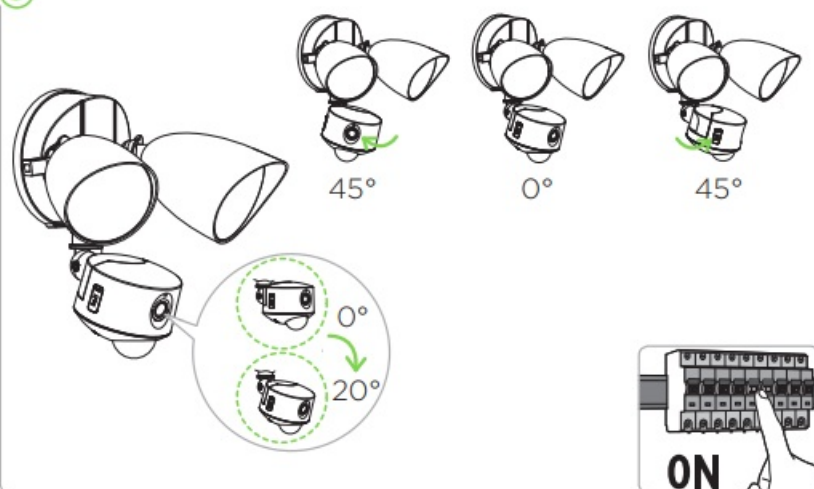




8



9



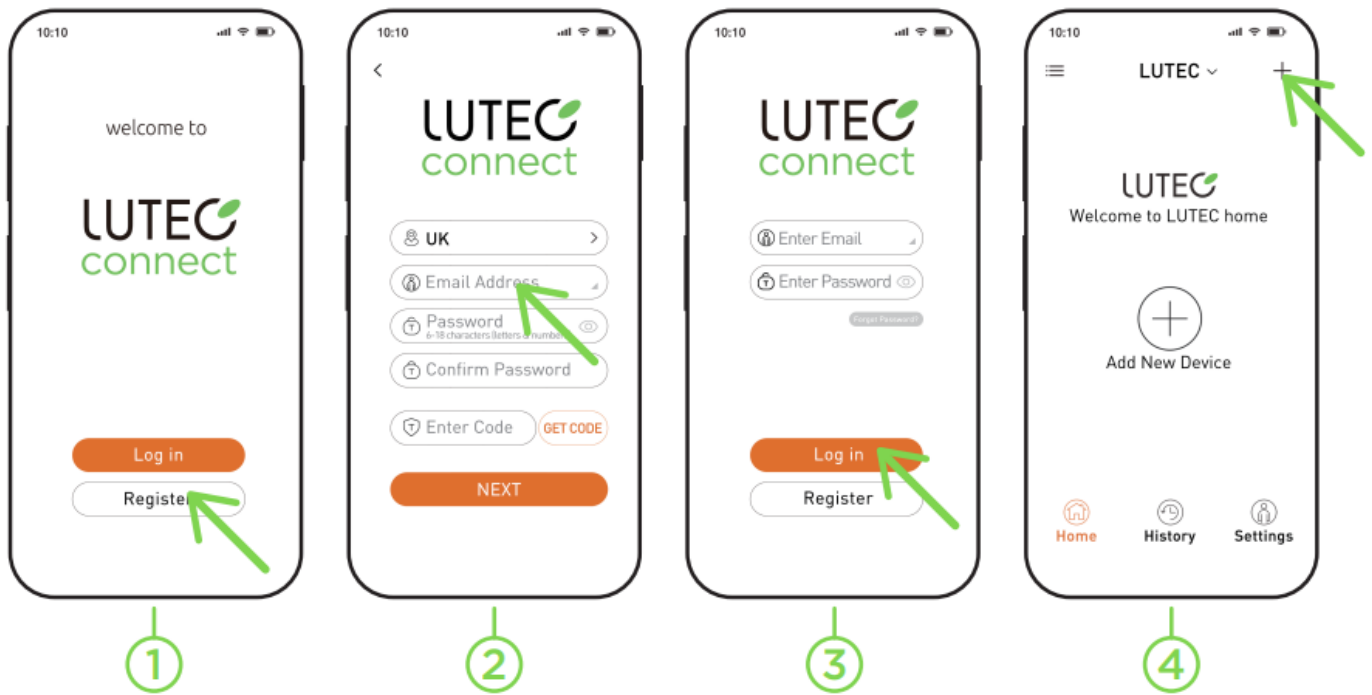
Download the free LUTEC connect App

Download the free APP.

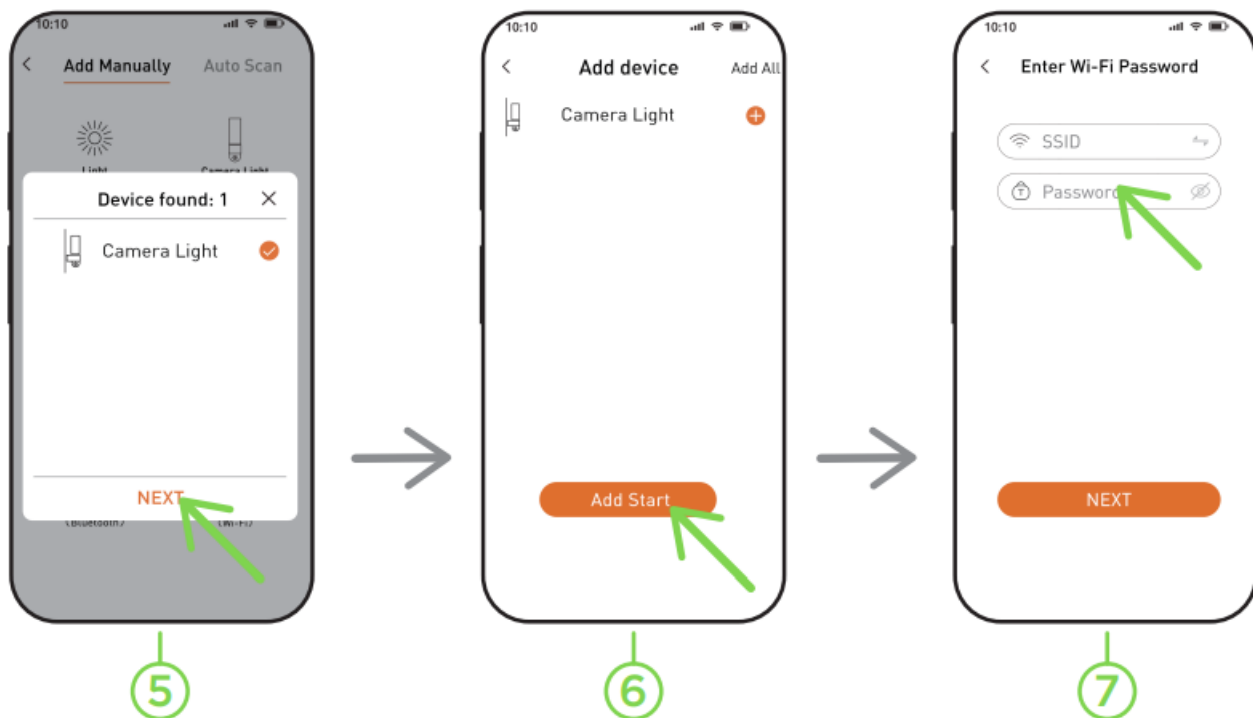
LUTEC
connect

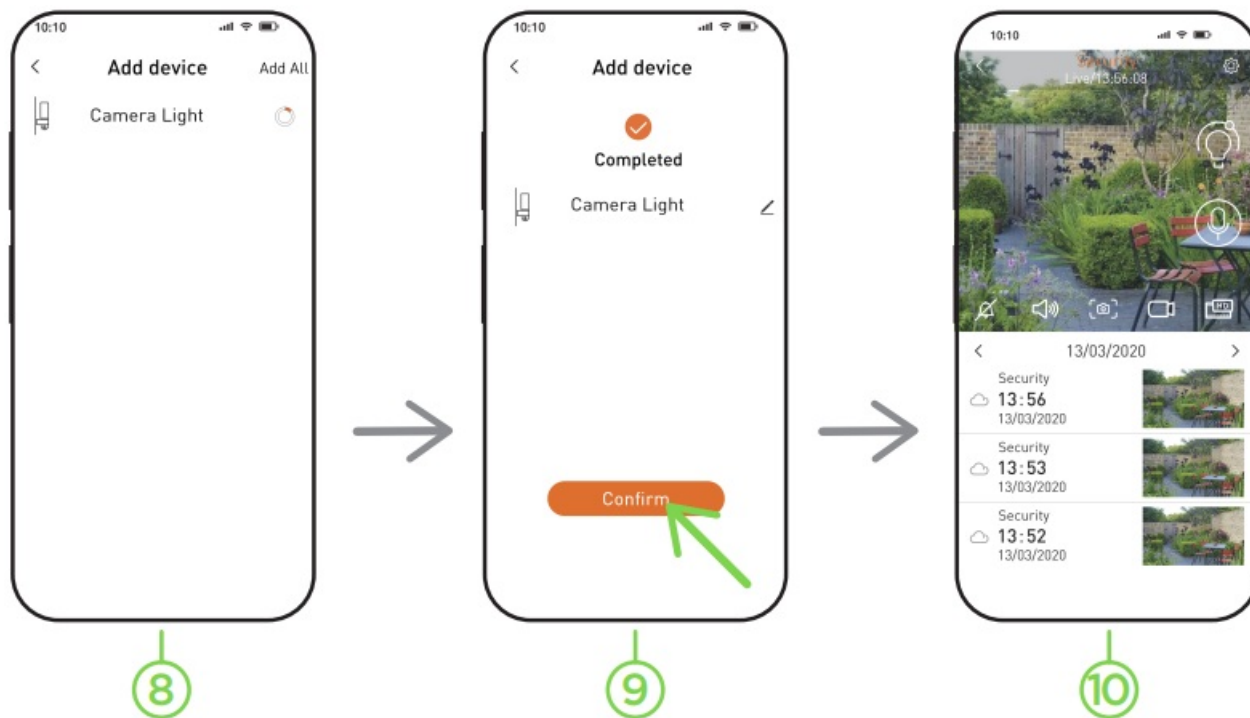


Sign up & log in



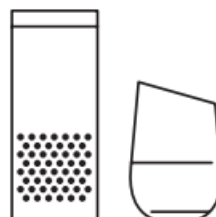
Set-up





1. Register
2. Register a new account
3. Log in
4. Home interface
5. Device auto detect
6. Add new device
7. Enter Wi-Fi password
8. Bluetooth search and connect
9. Confirm selection
10. Ready for use

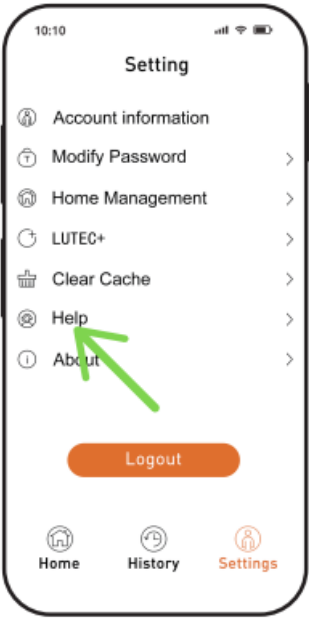
Smartspeaker



With additional voice control Gateway – Sold separately



Personal Settings & Support



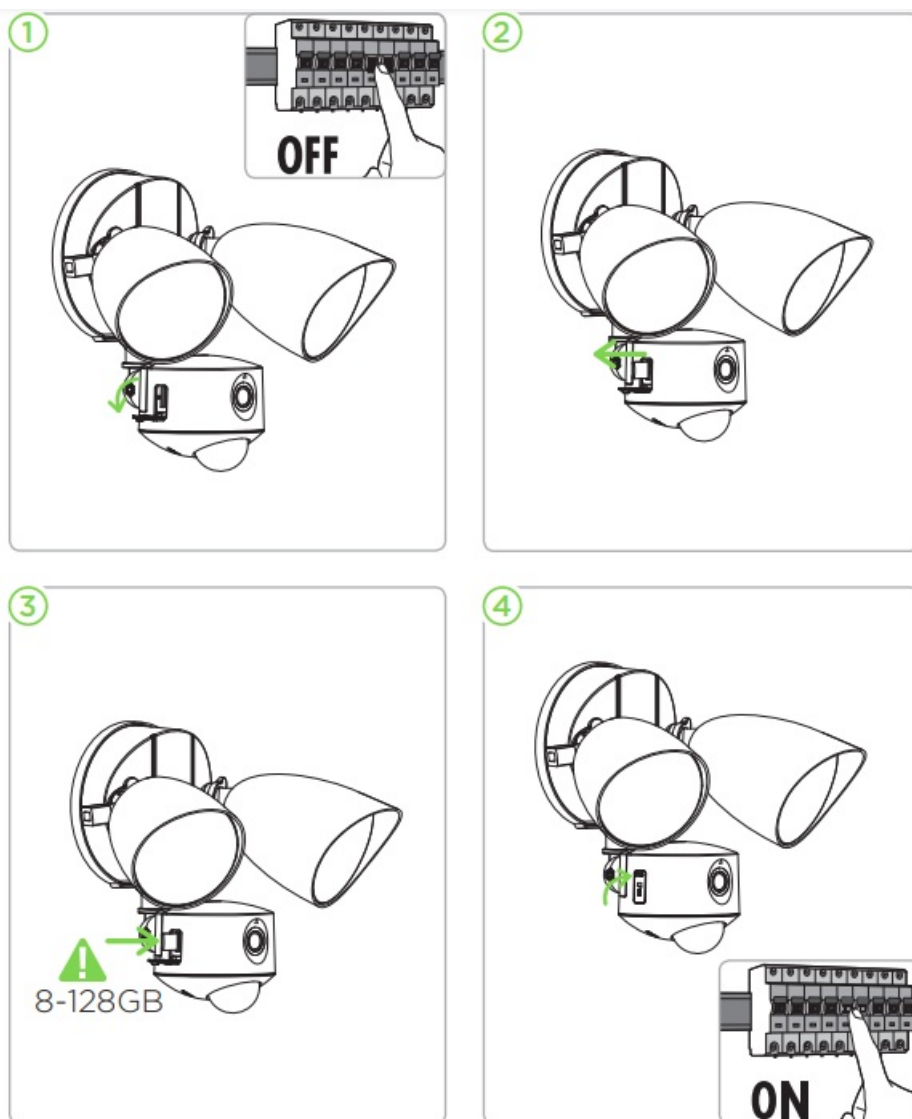
Tutorials & Help

Please scan

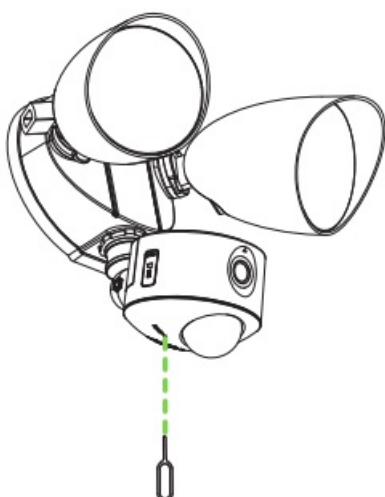


www.lutec-connect.world

SD Card Replacement

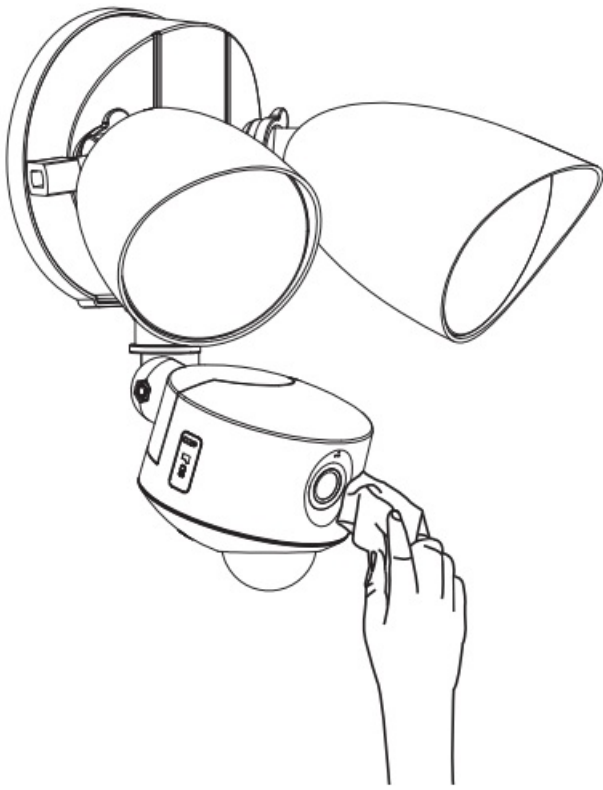


Manual Reset



Please reset the device first if you want to pair or change the smart phone. If the device is already connected to a smartphone, please reset the device first to pair/connect a new smartphone.

Maintenance



Clean the camera and sensor regularly with a damp cloth(Do not use cleaning agents).

Bluetooth mesh technology

Easy Connection



Bluetooth® technology, the global standard for simple, secure wireless connectivity, now supports mesh networking. The new mesh capability enables many-to-many device communications and is optimized for creating mid to large-scale device networks.

Bluetooth mesh allows you to solve more complex range and distance problems.

Legal Notes

Please check the local legislation concerning outdoor video recording around your house and private property. It's possible that specific laws in your country stipulate restrictions of video recording of areas outside your home or private grounds.

LUTEC will not accept any liabilities in case there are missing or incorrect notifications and video's.

Have fun with your new lighting



LUTEC Europe NV
Herentalsebaan 425
B-2160 Wommelgem
Belgium

LUTEC UK Ltd
110 Brooker Road
EN9 1JH Waltham Abbey
United Kingdom

LUTEC China Head Office
CN8, Far-East Industry Park
Yuyao, Zhejiang
China

DESIGNED IN EUROPE, MADE IN CHINA

+32 3 284 51 62


info@lutec-europe.com

www.lutec.com

www.lutec.com/services/global-network



Documents / Resources

 The image shows the cover of a user manual for the LUTEC 7622220012 Motion Sensor Camera. The cover is white with a green vertical bar on the left side. It features the LUTEC logo at the top right and a photograph of the camera unit at the bottom. Text on the cover includes "User manual", "Bedienungsanleitung", "Mode d'emploi", "Handledning", "Manual", "Manual del usuario", "Manual de l'utilisateur", and "Instrucciones de uso".	<p>LUTEC 7622220012 Motion Sensor Camera [pdf] User Manual</p> <p>7622220012 Motion Sensor Camera, 7622220012, Motion Sensor Camera, Sensor Camera, Camera</p>
---	--

References

- [Home | Lutec](#)
- [warranty | Lutec](#)
- [User Manual](#)