



LUPINE SI Minimax Af for E-Bikes Instruction Manual

[Home](#) » [LUPINE](#) » LUPINE SI Minimax Af for E-Bikes Instruction Manual 

Contents

- [1 LUPINE SI Minimax Af for E-Bikes](#)
- [2 Product Usage Instructions](#)
- [3 Pflege, Lagerung und Laden](#)
 - [3.1 Safety instructions](#)
 - [3.2 Assembly Instructions](#)
 - [3.3 Battery mounting](#)
 - [3.4 Operation](#)
 - [3.5 Lamphead informations](#)
 - [3.6 Bluetooth remote control](#)
 - [3.7 App](#)
 - [3.8 Product Care, Storage and Charging](#)
 - [3.9 Troubleshooting](#)
 - [3.10 Technical data](#)
 - [3.11 Warranty:](#)
 - [3.12 Declaration of conformity](#)
 - [3.13 Declaration of conformity USA](#)
- [4 Documents / Resources](#)
 - [4.1 References](#)
- [5 Related Posts](#)

LUPINE

LUPINE SI Minimax Af for E-Bikes



SL MINIMAX AF

Specifications

- Lichtleistung:
- Leuchtzeiten:
 - mit 5.0Ah Akku
 - mit 6.9Ah Akku
 - mit 10Ah Akku

Product Usage Instructions

Montageanleitung

Der beiliegende Schnellspanner wird links am Lampenkopf und auf gleicher Seite am Vorbau montiert. Zur Feinjustierung an dem Hebel des Schnellspanners drehen. Bei der Montage des Schnellspanners ist die Position der O-Ringe zu beachten. Ein O-Ring sollte zwischen Halter und Lampenkopf sitzen, der andere zwischen Halter und Schraube. Wichtig: Der Lichtkegel muss mindestens so geneigt sein, dass seine Mitte in 5 Metern Entfernung vor dem Scheinwerfer nur halb so hoch liegt wie bei seinem Austritt aus dem Scheinwerfer. Dazu ist es ggf. notwendig die Neigung des Haltearms anzupassen.

Montage des Akkus

- Akkutypen:
- Akkumontage:

Bedienung der Lampe

- Einschalten:
- Ausschalten:
- Bluetooth-Fernbedienung:
- Leuchtprogramme:
- Bei Tageslicht:
- Bei Dunkelheit:
- Kleiner Taster: – Dimmen des Abblendlichts auf 5 Watt
- Aktivieren der Tagfahrlichtfunktion
- Bei aktiviertem Abblendlicht:
- Umschalten in die Fernlichtfunktion
- Bedienung der Lampe
- Individuelle Einstellungen:
- 1x aufleuchtet 2x aufleuchtet
- ECO 1 ECO 2
- FLF: 16W, ABL: 8W, TFL: 2W FLF: 10W, ABL: 5W, TFL: 2W
- 3x aufleuchtet Werkseinstellung
- FLF: 25W, ABL: 8W, TFL: 2W
- 4x aufleuchtet 5x aufleuchtet
- 6x aufleuchtet
- Sensorkalibrierung
- Legende: FLF = ABL = TFL =
- Fernlichtfunktion Abblendlicht Tagfahrlichtfunktion

Anzeigen der Lampe

- am Funksender:
- Fernlicht aktiviert
- Scheinwerfer blinkt 1x:
- Scheinwerfer blinkt:
- Warnung! Wenn der Akku leer ist, leuchtet der Scheinwerfer mehrere Male auf. Sofort anhalten! Die Lampe wird abgeschaltet!

Bedienung Smartcore Akku

Akustisch

- 5 x
- 4 x
- 2 x
- 1 x
- Optisch:
- = 100 %

- = 80%
- = 60%
- = 40%
- = 20%

Bluetooth-Funksender

Der Bluetooth-Funksender wird zusammen mit zwei passenden Peppi-V5-Lenkerhaltern geliefert. Beim Biken ist der ideale Befestigungsort des Funksenders gleich neben einem der beiden Griffe am Lenker, damit hast du die volle Kontrolle und musst die Hand nicht vom Lenker nehmen.

Lampe mit Sender verbinden:

- Von Werk aus ist die Lampe bereits mit dem Funksender verbunden.
- Neuen Sender verbinden:
- Bluetooth-Funksender
- Batteriewarnung Sender:
- Batteriewechsel am Sender:

App

Mit der App verbinden:

Pflege, Lagerung und Laden

- Pflege und Lagerung
- Lampe:
- Transport:
- Akku:
- Laden des Akkus:

Fehlerbehebung

- Fehler
- Ursache
- Behebung
- Tiefentladener Akku
- Akku laden
- Akku nicht oder fehlerhaft Alle Steckerkontakte am Scheinwerfer angesteckt
- Power LEDs leuchten nicht.
- LED-Einsatz ist defekt Lampe ist im Ruhezustand
- Die Leuchtzeiten sind zu gering.
- Der Smartcore Akku zeigt auch nach dem Laden nur 20% an.
- Der Sensor reagiert nicht.
- Der Sensor liegt nicht frei
- Den Sensor von Dreck, Schmutz usw. befreien
- Die Lampe reagiert nicht auf den Sender.

- Lampenkopf und Sender sind nicht miteinander gebunden.
- Knopfzelle leer oder falsch herum eingelegt.
- Siehe Kapitel Funksender.
- Die Lampe wechselt im 6-Sekunden-Takt zwischen Abblend- und Fernlicht
- Knopfzelle leer
- Knopfzelle ersetzen

FAQ

- **Q: How do I adjust the angle of the light beam?**

A: The light beam can be adjusted by modifying the inclination of the mounting arm. The center of the light beam should be half as high at a distance of 5 meters in front of the headlight compared to its exit from the headlight.

- **Q: How do I connect the lamp to the Bluetooth remote control?**

A: The lamp is already connected to the Bluetooth remote control by default. If you need to connect a new remote control, please refer to the Bluetooth remote control section in the user manual.

- **Q: How do I charge the battery?**

A: To charge the battery, follow the instructions provided in the user manual under the “Laden des Akkus” section.

Safety instructions

Warning!

- Avoid looking directly into the light emitted by the light or shining the light into your own eyes or the eyes of another person. If the light accidentally shines into your eyes, close your eyes and move your head out of the light beam. Do not use any strongly focusing optical device to look at the light beam.
- In cases where the light is used in a public or commercial setting, users should be provided with training concerning the safety measures for laser light.
- This device may then be used by children 8 years of age or older, persons with limited physical, sensory or mental capabilities, as well as persons with no previous experience in handling such devices, if they are supervised by a person responsible for their safety.
- Carry a spare light with you at all times, as the product can potentially fail unexpectedly at any time.

Defects:

- Light source must be replaced in general if the light source (or one of the LEDs) is defective.
- In the event of any physical or internal battery failure, do not attempt to repair.
- No user-servicable parts!

Heat generation:

The housing of SL may heat up; so make sure that you always keep the light at a safe distance to any combustible or flammable materials. Could cause fire or death! However, quiescent operation (without cooling the light housing via airflow or the like) is possible at any time and will not damage the product. Always disconnect the battery from the light at transport or storage!

Water resistance:

All SL components are waterproof and can of course be used under extremely severe conditions. The lamp complies with IP protection class 67 but is NOT a diving lamp and is NOT suitable for use under water.

Cleaning:

Do not use a strong water jet or heavy detergent to clean the lamp.

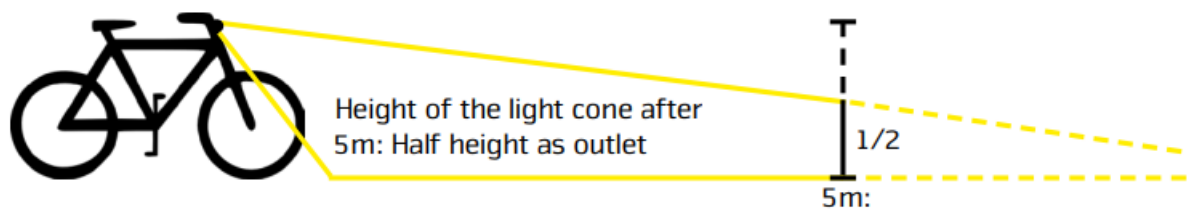
Assembly Instructions

- The included quick release mount needs to be installed on the left side of the lamp head and on the same side on the stem.
- For proper setup screw on the lever of the quick-release mount.

When mounting the quick release, note the position of the O-rings. One O-ring should be between the holder and the lamphead and the other one between the holder and the screw.

Position the lamp centric at the handlebar. Now close the bracket of the quick release so the SL is mounted tight in its position.

Important: The beam must be at least inclined so that its center is only half as high as 5 m away from the headlamp. For this, it may be necessary to adjust the inclination of the mounts.

**Battery mounting****Battery type**

The battery is mounted with a velcro as shown here. They also come with a capacity indicator.

Battery mounting

Your battery is supplied with a velcro strap, coated with an anti-slip material to ensure a secure mount. Use the strap which most closely matches your tube size.



Operation

Turn on

By connecting the battery to the lamphead it turns on automatically. The lamp can also be switched on by a short press on the button of the lamp head. Depending on the ambient light, the SL starts lighting either with low beam or daytime running light. Note: Only in the dark when the low beam is activated, it's possible to switch into high beam.

Turn off:

To turn off the lamp, keep the button pressed for about 2 seconds.

Bluetooth remote control:

In order to save battery capacity, the remote connection between the lamp and remote control stays active for only 1 hour when the lamp is switched off (standby) and the lamp can be switched on immediately at any time. After that, the lamp may start with a delay, since the signal is only checked every 10 seconds (represented by a blue blinking of the remote control). After 25 hours, the connection between the lamphead and the remote control will be completely turned off. The lamphead can then only be activated again via the remote control when the lamphead is reconnected to the battery or switched on using the underneath button of the lamphead.

Light mode:

A brightness sensor automatically switches between daytime running light and low beam.



Daylight

- Small button:
- Switch to low beam (Press again to deactivate, sensor is not active)

Big button:

- Without function

Darkness / Night

- Small button:
 - With a short press: Low beam dims to 5Wc (Not possible when ECO 2 is activated)
 - Keep it pressed for about 2 sec.: Activate daytime running light (Press again to deactivate, sensor is not active)

Big button

- If low beam is activated, switching to high beam is possible.

Customizing the settings at the lamphead

Keep the small button pressed (let go to select) until the lamp lights up as many times you'll need it to. **Note:** It will take about 6 sec. until the programming starts.

Keep the button pressed (let go to select) until SL lights up	Available settings	Explanation
Lights up 1x	ECO 1	High beam: 16W, Low beam: 8W, Daytime running light: 2W
Lights up 2x	ECO 2	High beam: 10W, Low beam: 5W, Daytime running light: 2W
Lights up 3x	Factory setting	High beam: 25W, Low beam: 8W, Daytime running light: 2W
Lights up 4x	Delay (5 sec / 16 sec.) Factory setting: 16 sec. Sensor calibration Only in the assembled state! Improper calibration may greatly affect the functionality of the light! Calibrate only outdoors. No artificial light or close to reflective objects!	The sensor controlled switchover from night- to daytime running light occurs as required in either 5 or 16 sec. Saves the measured brightness value as a switching point from daytime-to nighttime running light. The successful sensor calibration is confirmed by a short illumination of the daytime running light.
Lights up 5x	Reset to factory settings	

Note: The light outputs the maximum amount of light only if airflow lowers the temperature of the light sufficiently. If the light is not cooled by airflow, its power is reduced incrementally to prevent the LEDs and electronic elements from overheating.

Lamphead informations

At the remote

- The „high beam symbol“ of the remote lights blue

- High beam is activated.



Battery warning at the lamphead in operation:

- Lamp lights up 1x: 1. Battery Warning, low capacity remaining.
- Lamp lights up several times: Warning!
- The lamp flashes several times. Stop immediately! The light will be switched off.

Capacity indicator

Audible:

To check the capacity, simply press the touch-pad once. At first an audible signal will sound to give a quick reading in 20% steps.

Visible:

The visible indicator uses 5 blue LEDs. The LEDs can operate in two different operating states: blinking and continuous. LED meanings:

A blinking LED is indicating a 10% step and a continuously glowing LED a 20% step.

5 x		= 100 %
4 x		= 80 %
3 x		= 60 %
2 x		= 40 %
1 x		= 20 %

Example: 3 LEDs steady glow (20 %, 40 %, 60 %) 1 LED blinking (80 %) = 70 % remaining capacity

Bluetooth remote control

The Bluetooth remote comes together with two Peppi V5 barmounts. On the bike, the best way to mount the remote is directly next to your grips so you have full control and don't need to take off your hands while riding.



Connecting the transmitter to the light:

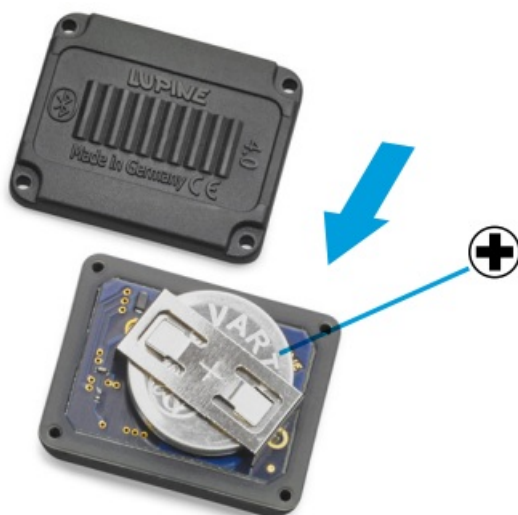
- By default, your lamp has already been connected to the transmitter.
- Connecting the transmitter to the light:
- If a new remote control is used, follow the step below:
- For establishing a connection, the receiving mode of the lamp has to be activated.
- After connecting the lamphead to the battery, the lamphead is in receiving mode for 15 seconds.
- During this time, press the remote control's big button for about 5 seconds, until the remote confirms by lighting up blue. Release the button immediately.

Low button cell:

With decreasing voltage, the remote control LEDs will shine less bright. Also cold temperature does reduce the battery voltage.

Transmitter battery change:

- To change the transmitter button cell a T5 star drive key is needed.
- Insert the new CR 2032 button cell as shown and close the transmitter again.
- Tighten the screws until the blue sealing is visibly squeezed.
- T5 star drive key: (Art.No. 137)



App

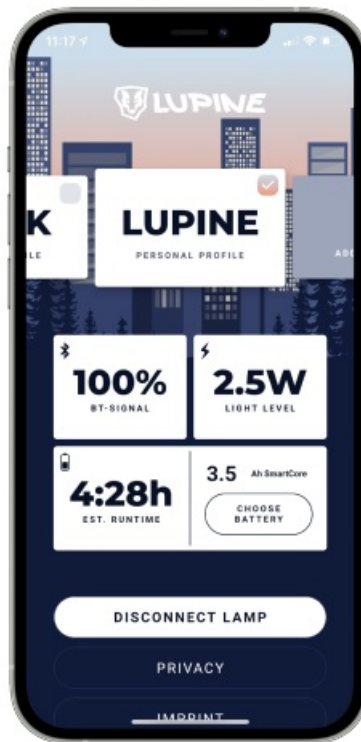
Lupine Light Control 3.0 – für IOS und Android

The „Lupine Light Control 3.0“ app offers a variety of setting options, for example, for the dimming levels of low and high beams as well as individual light profiles for different activities. In addition, the sensitivity and delay of the light sensor or the start of the battery warning can be set. Furthermore, the matching battery can be saved in the app, which results in the displayed, expected runtime of the lamp.

A version of the app is also available for selected smartwatches, which makes it possible to operate the lamp, including changing the profile, without a smartphone.

Connecting with app:

To connect to the smartphone, the lamp head must be set to receiving mode, which happens automatically after it is plugged into the battery. The pairing mode then is active for 20 seconds.



Product Care, Storage and Charging

Product Care and Storage

Light:

After use in dirty areas clean the lamp and the cables externally with warm water and some mild detergent. Important! Because of the delicate sealings, we do not recommend to open the lamp.

A leakage in consequence of opening the light is excluded from warranty! Before you try to repair something on your own get in touch with our helpful Service Team.

Transport:

Important: Always keep the battery separate from the light, because otherwise the small amount of power used by the electronics will discharge the battery, and the lamp may switch on accidentally. Important! Moreover, the consequent uncontrolled heat buildup could cause a fire or melt the adjacent plastic material.

Battery

If you intend not to use the lamp for a longer period of time, fully charge and store it at a cold and dry place.

Charging batteries

1. Plug the included Wiesel charger into an outlet
 2. Connect the charger to the battery, charging starts automatically the LED turns red
 3. When the battery is fully charged the LED on charger turns green
- Warning! This charger is to be used to charge rechargeable Li-Ion batteries only. It is NOT suitable for charging NiMH batteries!
 - Do NOT use non-rechargeable batteries. – Risk of explosion!
 - This charger may be opened ONLY by the manufacturer!

Troubleshooting

Problem	Cause		Solution
The light does not come on		Extremely discharged battery	Charge the battery
and the power LEDs do not			
flash when the battery is		Battery not plugged into the	Check all plug contacts
plugged into the lamp.	light or not plugged in		
	properly		
The power LEDs do not come		Faulty LED unit	LED units needs replacement
on.			Get in touch with Lupine
		Lamp hasn't been used for 5min	Move the lamp to deactivate
The runtime is too short.		Discharged or old battery	Charge battery
		Old battery	Replace battery
		Low ambient temperature	Keep battery warm
		Faulty charger	Replace charger
		Unsuitable battery	Use original Lupine battery
Even after charging only the 20 % LED will light up at the Smartcore battery.		The indicator was reseted	Discharge the battery with your light and fully charge it afterwards
The sensor does not respond.		The sensor is not exposed	Make sure the sensor is free from any dirt
The lamp does not recognize the transmitter.	Lamphead and transmitter are not linked. Button cell empty or wrong side up.		See chapter operation remote control.
The lamp changes between low beam and high beam every 6 seconds	<ul style="list-style-type: none"> • Button cell empty • Remote control out of range 		<ul style="list-style-type: none"> • Replace button cell • Reduce distance between lamp and remote control

Technical data

Runtime:

with 5.0Ah battery	with 6.9Ah battery	with 10.0Ah battery
--------------------	--------------------	---------------------

Default setting	25W	2400	Lumens (high beam)	1h 20min	1h 25min	2h 50min
	8W	900	Lumens (low beam)	4h 20min	6h 15min	8h 45min
	5W	450	Lumens (dimmed low beam)	7h	10h	14h
	2W	180	Lumens (daytime running light)	17h 30min	25h	35h
ECO	16W	1500	Lumens (high beam)	2h 10min	3h 10min	4h 20min
	10W	950	Lumens (low beam)	3h 30min	5h	7h

Weight

- Lamphead: 100g
- Lamphead with 5.0Ah battery: 290g
- Lamphead with 6.9Ah battery: 340g
- Lamphead with 10.0Ah battery: 450g

Contains:

- FCC ID: QDS-BRCM1078
- IC: 4324A-BRCM1078

Charging time

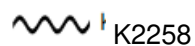
- SL Mini Max AF 5: 2h 35min
- SL Mini Max AF 7: 3h 35min
- SL Mini Max AF 10: 5h 15min

Battery capacity/nominal voltage:

- SL Mini Max AF 5: 5.0Ah / 7.2 V Li-Ion
- SL Mini Max AF 7: 6.9Ah / 7.2 V Li-Ion
- SL Mini Max AF 10: 10.0Ah / 7.2 V Li-Ion

Approval:

StVZO



Protection class:

IP67

Charger Wiesel:

- Input voltage: 100 – 240 V~, 50 – 60 Hz
- Charging current: 1.9 A max.
- Compatible batteries: Li-Ion 7.2 V

Operating temperature

-25 °C to +55 °C

High beam	25 Watt max.
Low beam	10 Watt max.
Daytime running light	2 Watt
Operation	Bluetooth remote control
Lamp	3x Osram Automotive LEDs
Lens system	Reflector System
Dimensions LxWxH	37 x 69 x 34mm
Material	Aluminium 6061-T6, CNC machined

More informations at www.lupine.de

EC Declaration of Conformity: www.lupine.de/ce/

Hereby, Lupine Lighting Systems GmbH declares that the radio equipment type SL AX remote is in compliance with Directive 2014/53/EU. The full text of the EU Declaration of conformity is available at the following internet address: <https://www.lupine.de/documents/ce>

**Regulations:**

The laws governing the allowable application domain for this lighting system may vary from one country to another. We recommend that you inform yourself about the relevant laws in this domain in your country.

Changes:

Rights for improvements and modifications of our products reserved.

Warranty:

The product's two year warranty applies to all components, as well as any manufacturing defect. The warranty does not include the battery, however. In addition, any modification or improper use of the product will void the warranty.

Declaration of conformity

Declaration of confirmity Canada:

This device complies with part 15 of the FCC Rules and Industry Canada license-exempt RSS standard(s).

Operation is subject to the following two conditions:

1. This device may not cause harmful interference, and
2. this device must accept any interference received, including interference that may cause undesired operation.

Declaration of conformity USA

This device complies with part 15 of the FCC Rules. Operation is subject to the following two conditions:

1. This device may not cause harmful interference, and
2. this device must accept any interference received, including interference that may cause undesired operation.

Changes or modifications not expressly approved by the party responsible for compliance could void the user's authority to operate the equipment.

Lupine Lighting Systems GmbH Im Zwiesel 9

92318 Neumarkt

Germany

- **Phone:** +49 (0) 91 81 – 50 94 90
 - **Fax:** +49 (0) 91 81 – 50 94 915
 - **E-mail:** info@lupine.de
 - www.lupine.de
-

Documents / Resources



[LUPINE SI Minimax Af for E-Bikes](#) [pdf] Instruction Manual
SI Minimax Af for E-Bikes, E-Bikes

References

- art.no
- [Lupine Lighting Systems - We are the Light](#)
- [Lupine Lighting Systems - CE-Dokumente](#)
- [Lupine Lighting Systems - CE-Documents](#)
- [Lupine Lighting Systems - CE-Documents](#)
- [User Manual](#)