

Linux LX9 Memory Foam Wedge Pillow Set Instruction Manual

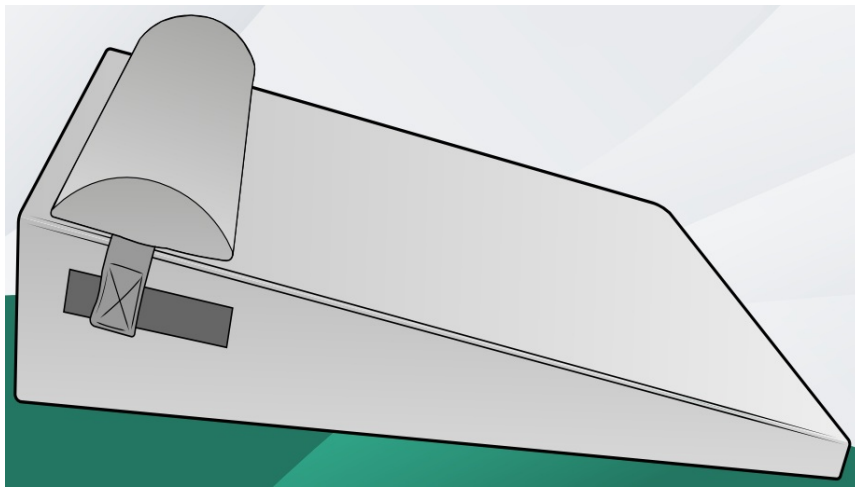
[Home](#) » [Linux](#) » Linux LX9 Memory Foam Wedge Pillow Set Instruction Manual 

Contents

- [1 Linux LX9 Memory Foam Wedge Pillow Set](#)
- [2 Product Information](#)
- [3 Product Usage Instructions](#)
- [4 FAQ](#)
- [5 Congratulations on your purchase of the Linux LX9 – Extra Large Wedge Pillow Set!](#)
- [6 Introduction](#)
- [7 What's In The Box?](#)
- [8 Terms of Use](#)
- [9 WARRANTY](#)
- [10 Features](#)
- [11 Benefits & Versatility](#)
- [12 Before Using the Pillows](#)
- [13 Configuration Ideas 20 WAYS TO COMFORT](#)
- [14 Care, Storage & Cleaning Instructions](#)
- [15 Troubleshooting](#)
- [16 Linux Wellness Products Collection](#)
- [17 Documents / Resources](#)
 - [17.1 References](#)
- [18 Related Posts](#)



Linux LX9 Memory Foam Wedge Pillow Set



Product Information

Specifications:

- **Product Name:** Linux LX9 2pcs XL Wedge Pillow Set
- **Material:** 100% Memory Foam
- **Includes:** 1x Wedge Pillow, 1x Head Pillow, 1x User Manual
- **Warranty:** 1-year warranty covering defects in materials, workmanship, and assembly

Product Usage Instructions

Introduction:

Congratulations on your purchase of the Linux LX9 – Extra Large Wedge Pillow Set! This innovative wedge pillow system is designed to improve your back problems and overall health issues, providing you with a relaxing experience.

What's In The Box?

The package includes a wedge pillow, a head pillow, and a user manual. Please ensure all items are present upon unboxing.

Terms of Use:

If you do not accept liability of Usership, please refrain from using the product. Do not open any enclosed materials if you choose to return the product. Note that returns or exchanges are not accepted once the product has been used or is no longer in new condition.

Warranty:

A 1-year warranty covers defects in materials, workmanship, and assembly. To avoid invalidating the warranty, carefully read and understand the terms in the provided booklet. Contact Customer Support if you encounter any issues.

Parental Guidance:

Parents or guardians are responsible for ensuring minors receive appropriate guidance or supervision when using this product.

FAQ

- **How do I clean the wedge pillow set?**

The wedge pillow cover is removable and machine washable. Follow the care instructions in the user manual

for best results.

- **Can I adjust the height of the wedge pillow?**

The height of the wedge pillow is fixed; however, you can place the head pillow on top for additional elevation if needed.

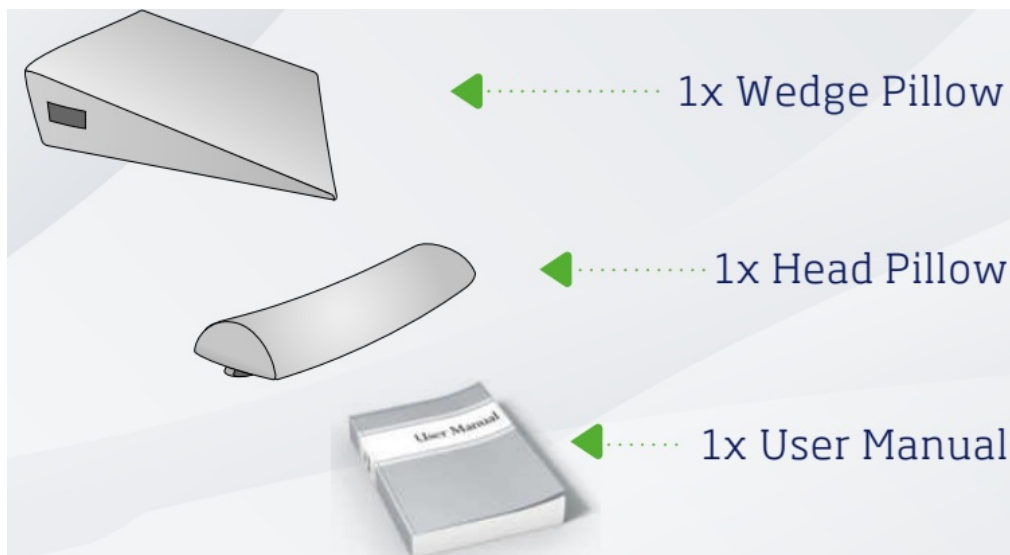
Congratulations on your purchase of the LUNIX LX9 – Extra Large Wedge Pillow Set!

- This innovative wedge pillow system improves your back problems & your overall health issues to give you a relaxing experience unlike anything you have tried before!
- Your satisfaction is our top priority and we are here to help with any issues!
- We've started as a small American family business based in California with the CORE VALUE of enhancing each of our customer's life experience. Our team works hard everyday to make the most thoughtful and the highest-quality products for those who matter the most: OUR FAMILY & FRIENDS!

Introduction

- Thank you for purchasing the LX9 2pcs XL Wedge Pillow Set.
- This manual contains the instructions you will need to operate and maintain your model so that you can enjoy it for years to come. However, please be advised that mishaps could happen and rest assured that LUNIX is a team of professionals who aim to provide the highest level of factory support possible.
- We know you're excited about laying down on your new wedge pillow set, but it's very important that you take some time to read through the User's Manual. This manual contains all the necessary information that will allow you to use your new wedge pillow set. Also, be sure to read and follow the precautions and warnings in this manual and on any labels or tags attached to your model. They are there to educate you on how to operate your product safely and also get maximum life and performance from it.
- Thank you again for choosing LUNIX. We work hard every day to make sure that you receive the highest level of customer satisfaction possible. We truly want you to enjoy your new Wedge Pillow Set.
- You can find more information on our website at www.lunixinc.com
- If you have any questions about your model or its operation, contact LUNIX Customer Support by email : support@lunixinc.com
- This bed wedge pillow set has been conceived to provide you extensive comfort whenever you want to rest, read or watch TV. As the pillows offer soft and firm support, they make your head, neck, back, and legs comfortable by allowing them to be in an elevated angle, suitable for such activities. Hence, it helps you prevent numbness, neck or back pain, and spinal injuries or stress.
- The LX9 Memory Foam Wedge Pillow System is designed as a personal care product. It is not intended for diagnosis/treatment of any health condition.

What's In The Box?



Terms of Use

- This product is surrendered by LUNIX to the purchaser with the understanding that the purchaser accepts the responsibility that using the LX9 2pcs Extra Large Wedge Pillow Set with its accessories in a careless, improper, or unsafe manner can result in serious injury. Also, the purchaser assumes all liability resulting from any misuse, unsafe handling, failure to follow instructions, or any action that constitutes a violation of any applicable laws or regulations. LUNIX shall not be liable for personal injury, loss of property, or loss of life resulting from the use of this product under any circumstances, including intentional, reckless, negligent, or accidental behavior. LUNIX shall also not be liable for any special, indirect, incidental, or consequential damages arising out of the assembly, installation, or use of their products or any accessory or chemical required to use their products. By the act of operating & using the product, the user accepts all resulting liability and releases LUNIX of any and all liability associated with its use.
- If you as the user do not accept liability of Usership, LUNIX requests that you do not use this product. Do not open any of the enclosed materials. Return the model to LUNIX but please be advised that we absolutely cannot accept an item for return or exchange after it has been used or is otherwise no longer in as-new condition.
- All information contained in this User's Manual is subject to change without notice. For the most updated version of the User Manual, please visit our website.
- LUNIX reserves the right to make changes and improvements to products without incurring any obligation to incorporate such improvements into products previously sold. If you have any questions about your model or its operation, contact Customer Support by E-mail: support@lunixinc.com

WARRANTY

- To guarantee you have the best experience we offer a 1-year warranty covering defects in materials, workmanship and assembly on all our products*.
- To ensure that you don't invalidate the terms of the warranty please read and understand this booklet.
- *If a defect in materials, workmanship or assembly is found BEFORE the product has been used, we will exchange the entire product, if the product is returned complete and in perfect condition in its original packaging. **
- IT IS THE PARENTS' OR GUARDIANS' RESPONSIBILITY TO ENSURE MINORS RECEIVE APPROPRIATE

GUIDANCE AND/OR SUPERVISION WHEN USING THIS PRODUCT.

- Linux Orthopedic Pillows products are personal health products. As such, for our customers' protection, we are unable to accept returns for any pillow product that has been opened and/or uncompressed. We are able to accept returns of unopened products in the original, sealed packaging within 30 days of purchase.
- LUNIX DOES NOT operate a new for old warranty once the product has been used. Warranty is only valid if the items were purchased directly from LUNIX (purchases from third party sellers will not be covered under the warranty)

COVERED BY WARRANTY

– 1-year warranty if the foam is not rebounding (excludes damages caused by the user, including but not limited to incorrect maintenance.)

NOT COVERED BY WARRANTY

- All other parts not mentioned above
- Lack of maintenance, improper use or abuse
- Water damage or problems resulting from cleaning

LUNIX has made every effort to ensure your product is as strong and durable as possible. However, it is still possible that some mishaps could happen and we take full responsibility. For more information about returns, please contact us at support@lunixinc.com

Features



Benefits & Versatility

HEALTH BENEFITS

- Relieves lower back pain and muscle spasms
- Keeps legs in stress-free posture & helps increase circulation in your legs
- Improves blood circulation
- Speeds up Recovery post surgery, accidents and injuries
- Helps reduce symptoms of acid reflux, GERD
- Helps with snoring
- Recommended for shoulder surgery
- Comfortable for pregnant women, good for breastfeeding
- Relaxation

VERSATILITY

- Reading
- Watching TV
- Working on laptop
- Playing video games
- Eating in bed

USE IT ON THE BED FLOOR OR COUCH

Before Using the Pillows

FIRST STEP

- With billions of tons of packaging waste populating landfills across the world, here at Lunix, we understand the importance of sustainability in packaging and we are trying to provide environment friendly options in order to reduce our carbon footprint.
- That's why the Lunix Wedge Pillow System is compressed to use 60% less carton. This process does not affect in any way the pillows.
- Simply release the pillows from the packaging and let them naturally recover to their initial shape for 48 h.

IMPORTANT: Place the pillow set in a warm place in order to accelerate the recovery to the initial shape. As the pillow set is made of memory foam, cold affects the rebound and delays the recovery.

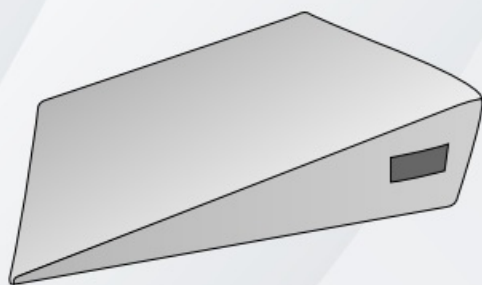
IMPORTANT:

The Head Pillow may feel uncomfortable for people with medical conditions. In this case we recommend to use a regular pillow. There is no one correct position, you can create your own configuration according to your needs.

Configuration Ideas 20 WAYS TO COMFORT

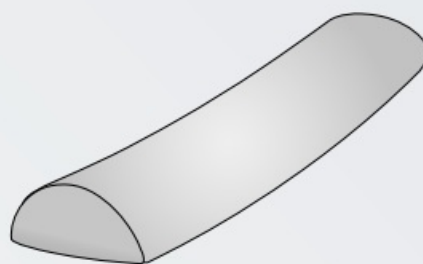
WEDGE PILLOW

A



HEAD PILLOW

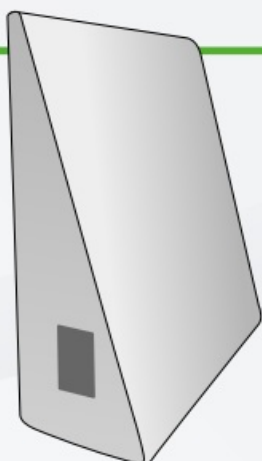
B



CONVERTS TO ANY POSITION FOR
ULTIMATE SUPPORT & COMFORT

1

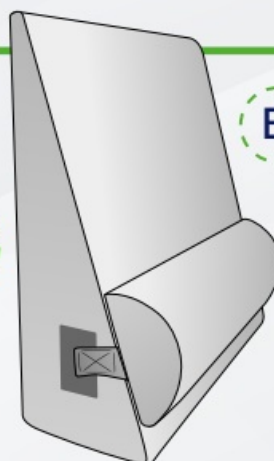
A

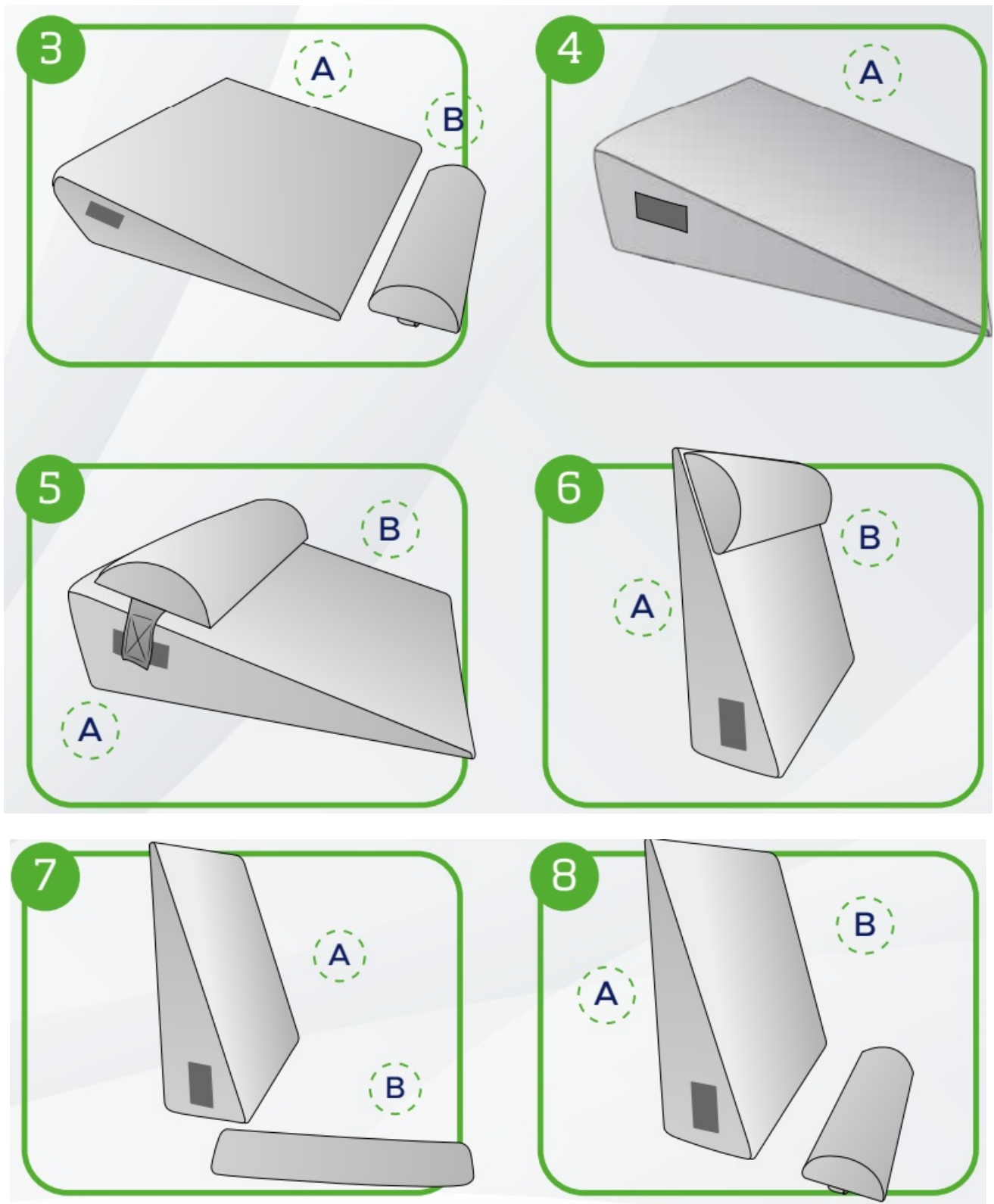


2

A

B





Care, Storage & Cleaning Instructions

- Store the Lunix Wedge Pillow System in a cool and dry place when not in use.
- Do not place the pillows into any type of liquid.
- Keep away from all solvents and harsh detergents.
- The cover is machine washable with cold water.
- Be careful while removing the cover from the pillow: we recommend to curve the foam (to make it smaller) while removing the cover to avoid ripping it up.



Precautions

- Do not wear jewelry while using the Lunix Wedge Pillow System.
- Never use the Lunix Wedge Pillow System in high temperature or next to corrosive gas.
- Do not place the Lunix Wedge Pillow System against a wall in order to prevent it from getting dirty.

Troubleshooting

When operational problems occur, please refer to the chart below.

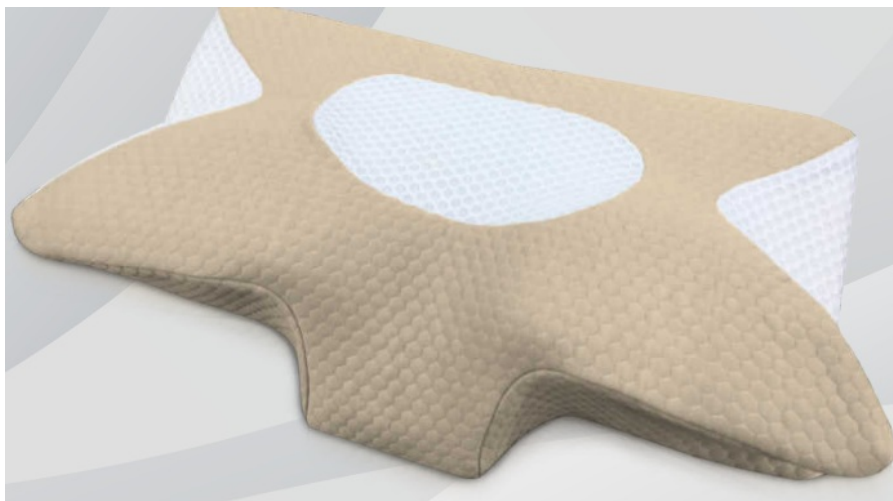
| PROBLEM | POSSIBLE CAUSE | POSSIBLE SOLUTION |
|---|---|--|
| THE PILLOWS LOOK DEFLATED | The pillows have been compressed for a long time | Let the pillows recover to their initial shape for at least 48h in a warm place |
| INDUSTRIAL ODOR COMING FROM THE PILLOWS | The pillows have been stored for a long time | Let the pillows ventilate for at least 48h |
| THE PILLOWS LOOK DEFLATED EVEN AFTER 48H | The pillow set has been placed in a cold room | Place the pillow set in a warmer place. If after 72h, the pillow set didn't get back to the initial shape, please contact us at support@lunixinc.com |
| MISSING STRAPS MISSING VELCROS | All our covers are handmade and some mishaps could happen | Contact us at support@lunixinc.com and we will fix your issue right away |

Lunix Wellness Products Collection

LX1 Foot and Calf Compression Massager – Green & Black



LX2 Cervical Pillow for Sleeping



LX3 Hand Massager – White & Black



LX4 Touchscreen Knee Massager – Green & Black



LX5 4Pcs Orthopedic Bed Wedge Pillow Set – Brown & Navy



LX6 3Pcs Orthopedic Bed Wedge Pillow Set – Brown & Navy



LX7 Touchscreen Hand Massager – White & Black



LX8 2 Layers Orthopedic Bed Wedge Pillow Set – Blue & Gray



LX9 Extra Large Orthopedic Bed Wedge Pillow 7.5" & 12" – Gray



LX9 Extra Large Orthopedic Bed Wedge Pillow 7.5" & 12" – Navy



LX10 Cordless Full Leg Compression Massager – Green & Black



LX11 5Pcs Orthopedic Bed Wedge Pillow Set – Blue & Gray



LX12 3Pcs Orthopedic Wedge Pillow Set for Kids – Pink & Navy



LX13 6Pcs Orthopedic Bed Wedge Pillow Set – White & Navy



LX14 6Pc Orthopedic Bed Wedge Pillow



LX15 14pcs Modular Couch for Kids – Gray & Blue



LX16 Red Light Therapy Belt – Green & Black



Documents / Resources

| | |
|---|--|
|  | <p>Lunix LX9 Memory Foam Wedge Pillow Set [pdf] Instruction Manual</p> <p>LX9 Memory Foam Wedge Pillow Set, LX9, Memory Foam Wedge Pillow Set, Wedge Pillow Set, Pillow Set, Set</p> |
|---|--|

References

- [X Hand Massagers and Wedge Pillows | Lunix wellness](#)
- [User Manual](#)

[Manuals+](#), [Privacy Policy](#)

This website is an independent publication and is neither affiliated with nor endorsed by any of the trademark owners. The "Bluetooth®" word mark and logos are registered trademarks owned by Bluetooth SIG, Inc. The "Wi-Fi®" word mark and logos are registered trademarks owned by the Wi-Fi Alliance. Any use of these marks on this website does not imply any affiliation with or endorsement.