

LUMUX FL500 Preparing The Luminaire



# LUMUX FL500 Preparing The Luminaire Instruction Manual

[Home](#) » [LUMUX](#) » LUMUX FL500 Preparing The Luminaire Instruction Manual 

## Contents

- 1 LUMUX FL500 Preparing The Luminaire
- 2 Product Information
- 3 Product Usage Instructions
- 4 FAQs
- 5 PREPARING THE LUMINAIRE
- 6 INSTALLATION STEP
- 7 CONTACT
- 8 Documents / Resources
  - 8.1 References

**LUMUX** INC.

**LUMUX FL500 Preparing The Luminaire**



## Product Information

- **Specifications:**
  - **Model:** FL500-4/FL500-7/FL500-9
  - **Type:** LED Fixture
  - Power Cord Included
  - Mounting Plate Screw Provided
  - Fixture Mounting Plate Provided

## Product Usage Instructions

- **Preparing the Luminaire:**
  - Before installation, ensure you have all the necessary components provided with the luminaire.
- **Step 1 – Disassemble Luminaire Parts for Easy Installation:**
  - Remove the Mounting Plate from the Fixture Base.
- **Step 2 – Install Fixture Mounting Plate:**
  - Trace hole location on the surface using the Plate, and insert Anchors (by others).
  - Place Mounting Plate and fasten using Screws (by others).
- **Step 3 – Connect Fixture to a Waterproof Electrical Box:**
  - Insert the Fixture Power Cord to the Cable Gland (by others).
  - Make wiring connections as per the Wire Diagram.
  - Place the J-Box cover and fasten it to the Weatherproof J-Box (by others).

- **Final Installation:**

- Run the Power cord through the Mounting Plate Notch, place Fixture Base, and fasten using the provided screws.

## FAQs

- **Q: What should I do if I need replacement parts or additional information?**

- **A:** Contact or visit the manufacturer at [www.lumux.net](http://www.lumux.net) for re-lamping, replacement parts, or additional information.

- **Q: How should I ensure safety during installation?**

- **A:** Before installing or performing any maintenance, always turn off the power supply at the circuit breaker or fuse box. Using the light switch alone is not sufficient to prevent electrical shock.

## PREPARING THE LUMINAIRE

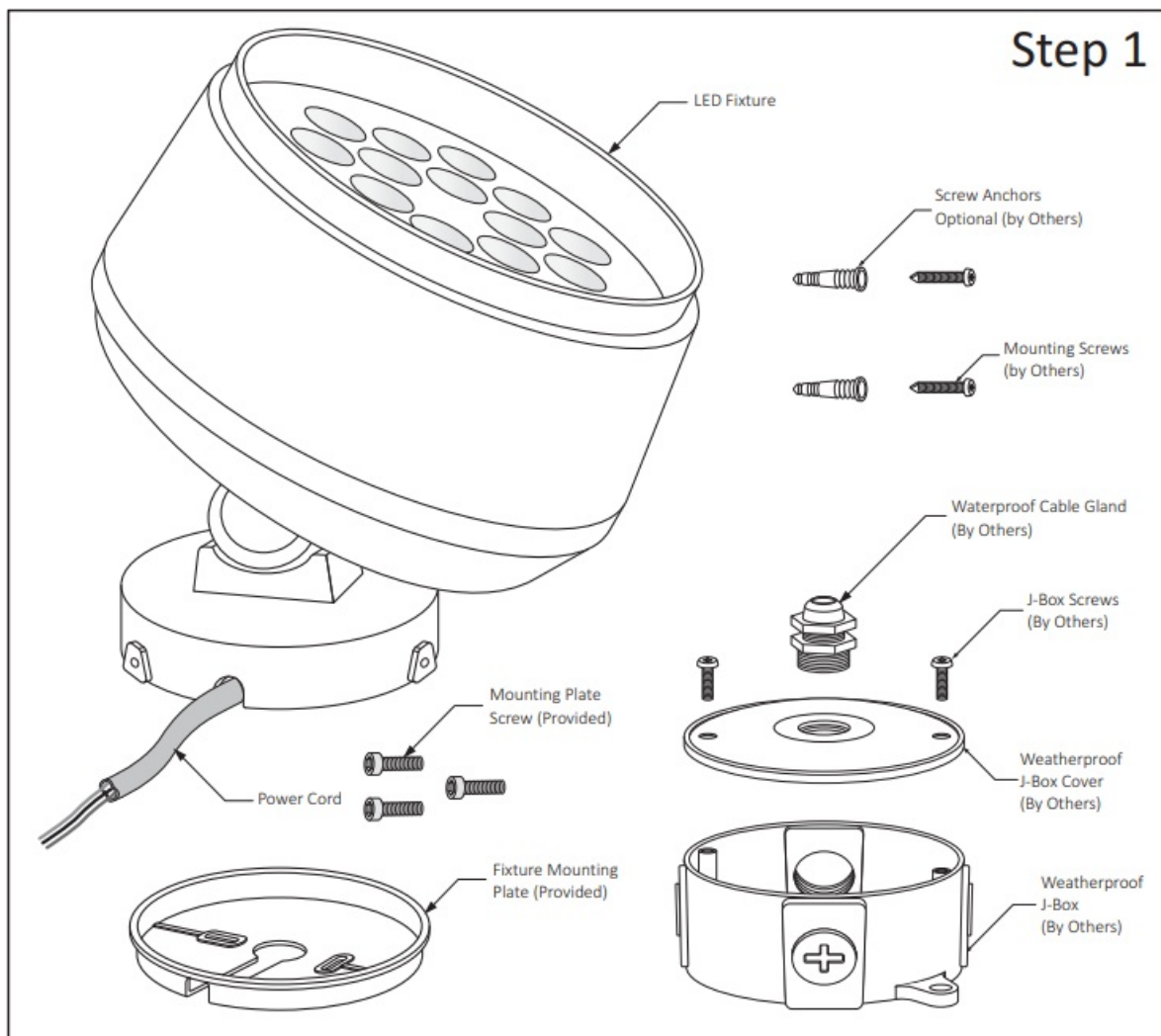
- **SURFACE / GROUND MOUNT LUMINAIRE:**

- FL500-4/FL500-7/FL500-9

## INSTALLATION STEP

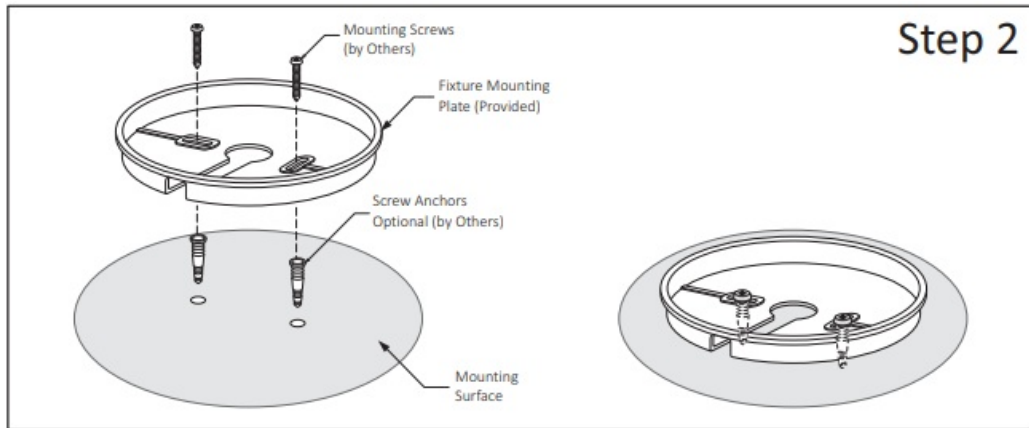
- **Step 1- Disassemble Luminaire Parts for Easy Installation:**

- **a.-** Remove the Mounting Plate from the Fixture Base.



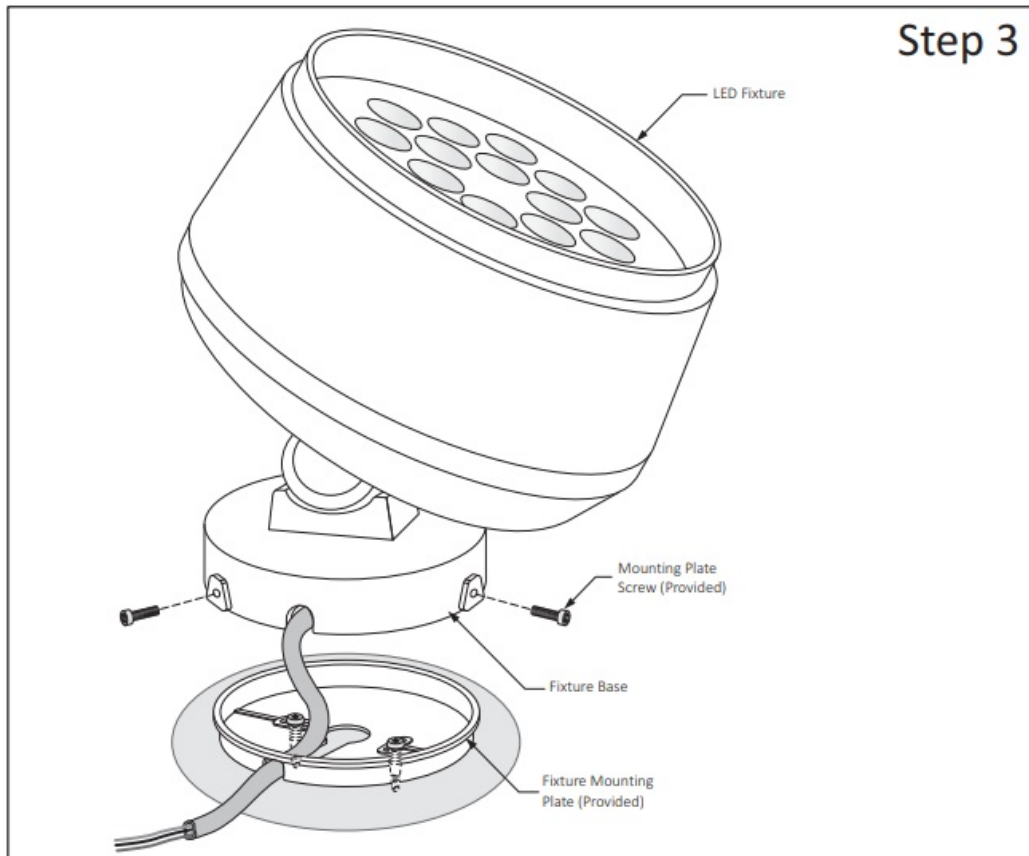
- **Step 2 – Install Fixture Mounting Plate:**

- **a.-** Trace hole location on the Surface using the Plate, and insert Anchors (by others).
- **b.-** Place the Mounting Plate and fasten using Screws (by others).



- **Step 3 – Install Fixture:**

- **a.-** Run the Power cord through the Mounting Plate Notch, place Fixture Base and fasten using the screws (provided).

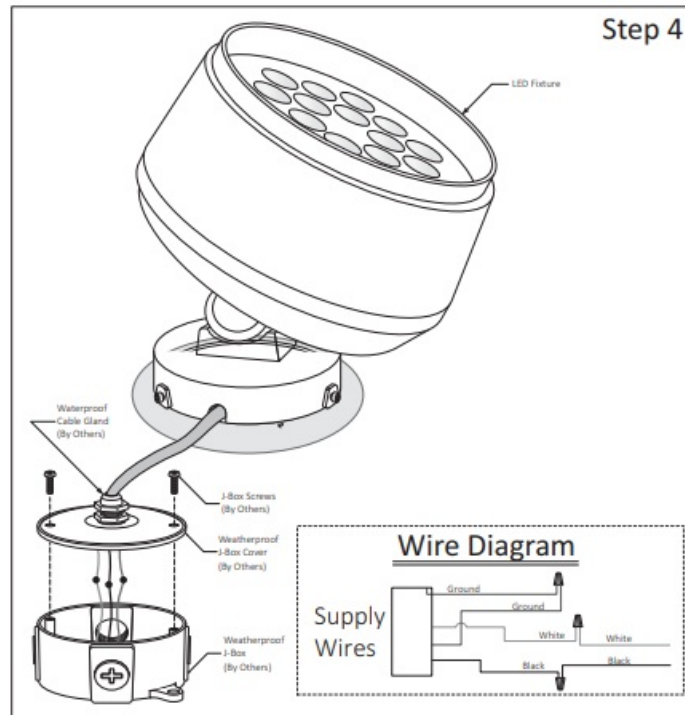


- READ AND UNDERSTAND ALL INSTRUCTIONS BEFORE INSTALLATION. IF YOU ARE NOT FAMILIAR WITH THE NATIONAL ELECTRICAL CODE (NEC), CONTACT A QUALIFIED ELECTRICIAN TO INSTALL THIS LUMINAIRE.
- **WARNING.-** Before installing this luminaire or doing any maintenance, turn off the power supply at the circuit breaker or fuse box. Turning the power off using the light switch is not sufficient to prevent electrical shock.
- **NOTE:** To re-lamp, replacement parts or additional information, contact or visit the manufacturer at [www.lumux.net](http://www.lumux.net).

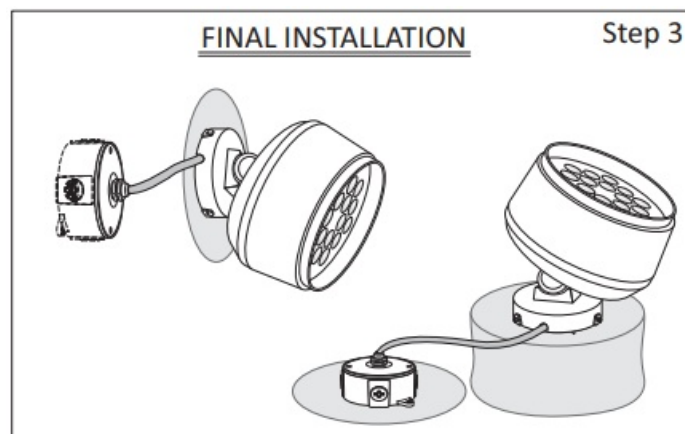
- **Step 4 – Connect Fixture to a Waterproof Electrical Box:**

- **a.-** Insert Fixture Power Cord to the Cable Gland (by others).

- **b.-** Make wiring connections, see Wire Diagram.
- **c.-** Place J-Box cover and fasten to Weatherproof J-Box (by others).



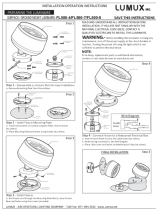
• **Step 3 FINAL INSTALLATION**



**CONTACT**


- LUMUX
- ARCHITECTURAL LIGHTING COMPANY
- Toll-Free 877- 895-5552
- [www.Lumux.net](http://www.Lumux.net).

**Documents / Resources**



**[LUMUX FL500 Preparing The Luminaire](#)** [pdf] Instruction Manual  
FL500-4, FL500-7, FL500-9, FL500 Preparing The Luminaire, FL500, Preparing The Luminaire,  
Luminaire

## References

-  [Lumux Lighting](#)
- [User Manual](#)

[Manuals+.](#) [Privacy Policy](#)

This website is an independent publication and is neither affiliated with nor endorsed by any of the trademark owners. The "Bluetooth®" word mark and logos are registered trademarks owned by Bluetooth SIG, Inc. The "Wi-Fi®" word mark and logos are registered trademarks owned by the Wi-Fi Alliance. Any use of these marks on this website does not imply any affiliation with or endorsement.