



Lumos CONTROLS Radiar D10 2 Channel DC Powered 0-10V Fixture Controller User Guide

[Home](#) » [Lumos CONTROLS](#) » Lumos CONTROLS Radiar D10 2 Channel DC Powered 0-10V Fixture Controller User Guide 

Contents

- [1 Lumos CONTROLS Radiar D10 2 Channel DC Powered 0-10V Fixture Controller](#)
- [2 INSTALLATION AND QUICK START SHEET](#)
- [3 Specifications](#)
- [4 Product Overview](#)
- [5 INSTALLATION INSTRUCTIONS](#)
- [6 Installing within a light fixture](#)
- [7 Wiring](#)
- [8 Application](#)
- [9 Troubleshooting](#)
- [10 Warranty](#)
- [11 Documents / Resources](#)
 - [11.1 References](#)
- [12 Related Posts](#)



Lumos CONTROLS Radiar D10 2 Channel DC Powered 0-10V Fixture Controller



Radiar D10
2 Channel DC Powered 0-10V Fixture Controller

INSTALLATION AND QUICK START SHEET

WARNING AND GUIDELINES!!!

Read and follow all safety instructions!!

DO NOT INSTALL DAMAGED PRODUCT!

This product has been properly packed so that no parts should have been damaged during transit. Inspect to confirm. Any part damaged or broken during or after assembly should be replaced.

WARNING: TURN THE POWER OFF AT THE CIRCUIT BREAKER BEFORE WIRING

WARNING: Risk of Product Damage

- Electrostatic Discharge (ESD): ESD can damage product(s). Personal grounding equipment should be worn during all installation or servicing of the unit
- Do not stretch or use cable sets that are too short or are of insufficient length Do not modify the product
- Do not mount near gas or electric heater
- Do not change or alter internal wiring or installation circuitry
- Do not use product for anything other than its intended use

WARNING – Risk of Electric Shock

- Verify that supply voltage is correct by comparing it with the product information
- Make all electrical and grounded connections in accordance with the National Electrical Code (NEC) and any applicable local code requirements
- All wiring connections should be capped with UL approved recognized wire connectors
- All unused wiring must be capped

Do's	Don'ts
Installation should be performed by a qualified electrician	Don't use outdoors
Installation shall be in accordance with all applicable local and NEC codes	Avoid input voltage exceeding maximum rating
Turn the power OFF at circuit breakers before wiring	Don't disassemble the products
Observe the correct polarity of output terminal	—

Specifications

Specifications	Min	Type	Max	Unit	Remarks
Input Voltage	12	—	24	VDC	Rated Input voltage
Input Current Max	—	56	60	mA	@12VDC, (22mA per channel)
Dimming Output 1&2	0	—	10	V	Max output tolerance $\pm 2\%$
Output Current	—	—	15	mA	0-10V sink & source; For dimming max output
Dimming Range	0	—	100	%	—
Dimming Resolution	—	7	bit	—	100 steps
Dimming Curve	—	Linear	—	—	—
Frequency Range	2400	—	2483.5	MHz	—
Tx Power	6	8	—	dBm	Conductive
Operating Temperature	-20	—	55	°C	—
Storage Temperature	-20	—	70	°C	—
Dimming Range	—	—	85	%	—
IP Rating	—	IP20	—	—	Indoor use only
Dimensions		66.7 X 29.2 X 22.4	—	mm	L x W x H
		2.6 x 1.15 x 0.9	—	in	L x W x H

Product Overview



Required tools & supplies



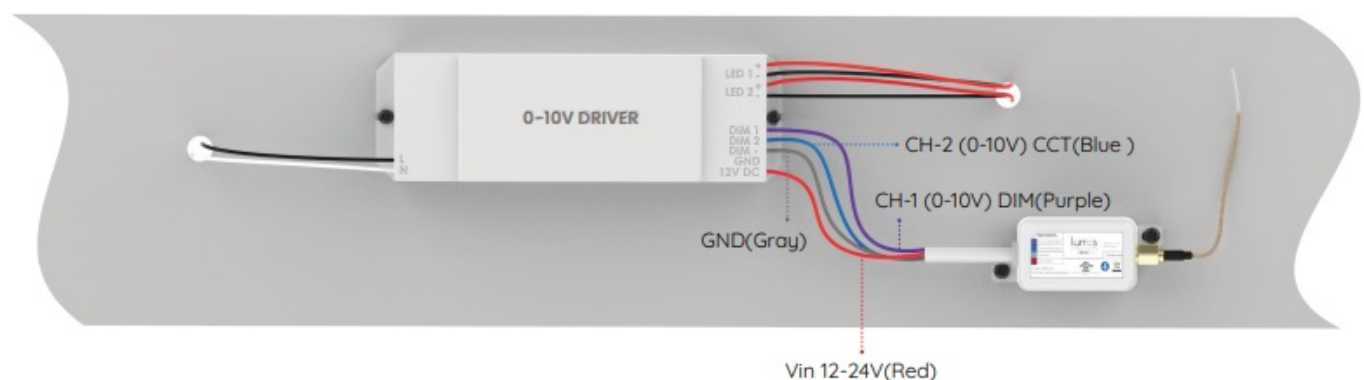
Radiar D10 is a 2 Channel DC-powered 0-10V Fixture Controller that provides advanced automation to select preset scenes, schedule combinations of light levels, dimming, motion sensing, task tuning, and more. It is compact, making it easy to mount inside the lighting fixtures. It is a part of the Lumos Controls ecosystem, including controllers, sensors, switches, modules, drivers, gateways, and analytical dashboards.

INSTALLATION INSTRUCTIONS

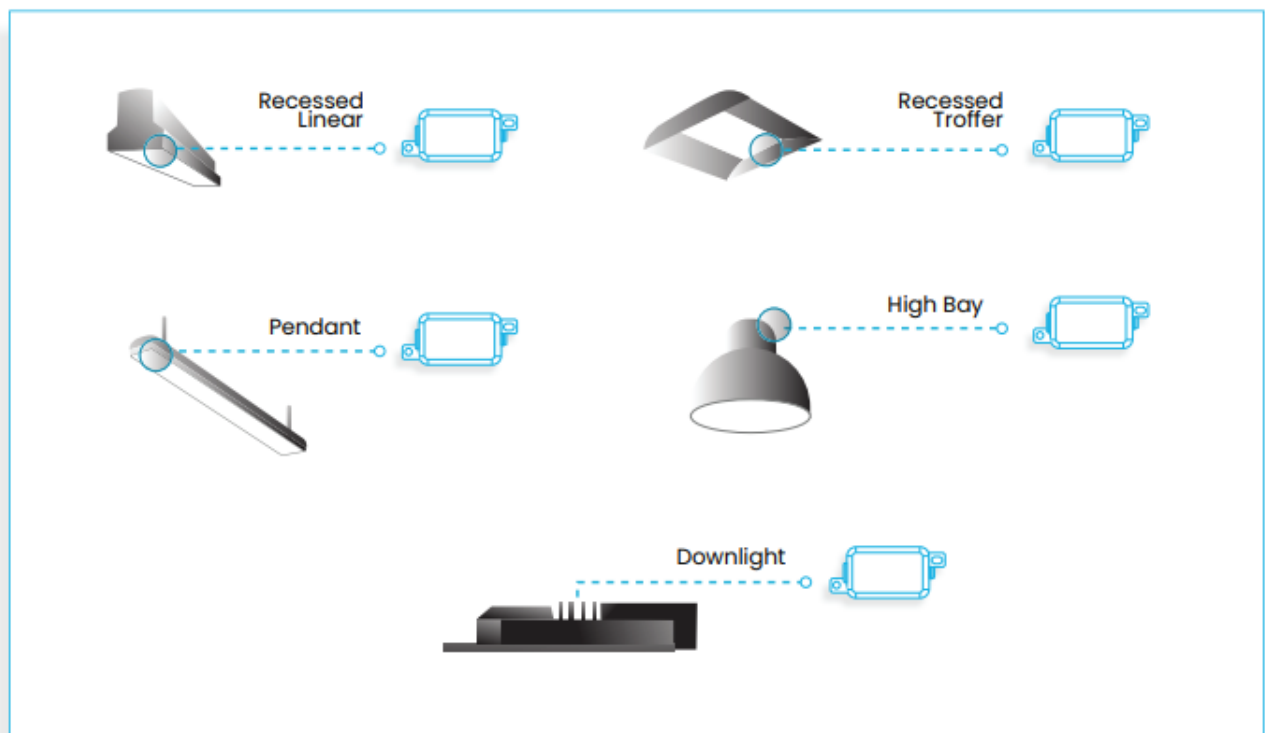
Installation Steps

1. Turn off the power before wiring and installing the device
2. The controller with a compact formfactor can be installed anywhere within the light fixtures, or within junction boxes. The screw hole available on the controller can be used to fix it firmly.
3. To power the controller, connect the AC Line and Neutral wires from the mains supply to the Line (Black color), and Neutral (White color) of the controller.
4. To control the DALI driver, connect the DALI lines to the DALI+ (Blue color) and DALI- (Grey color) wires in the controller. *DALI is polarity insensitive

Installing within a light fixture



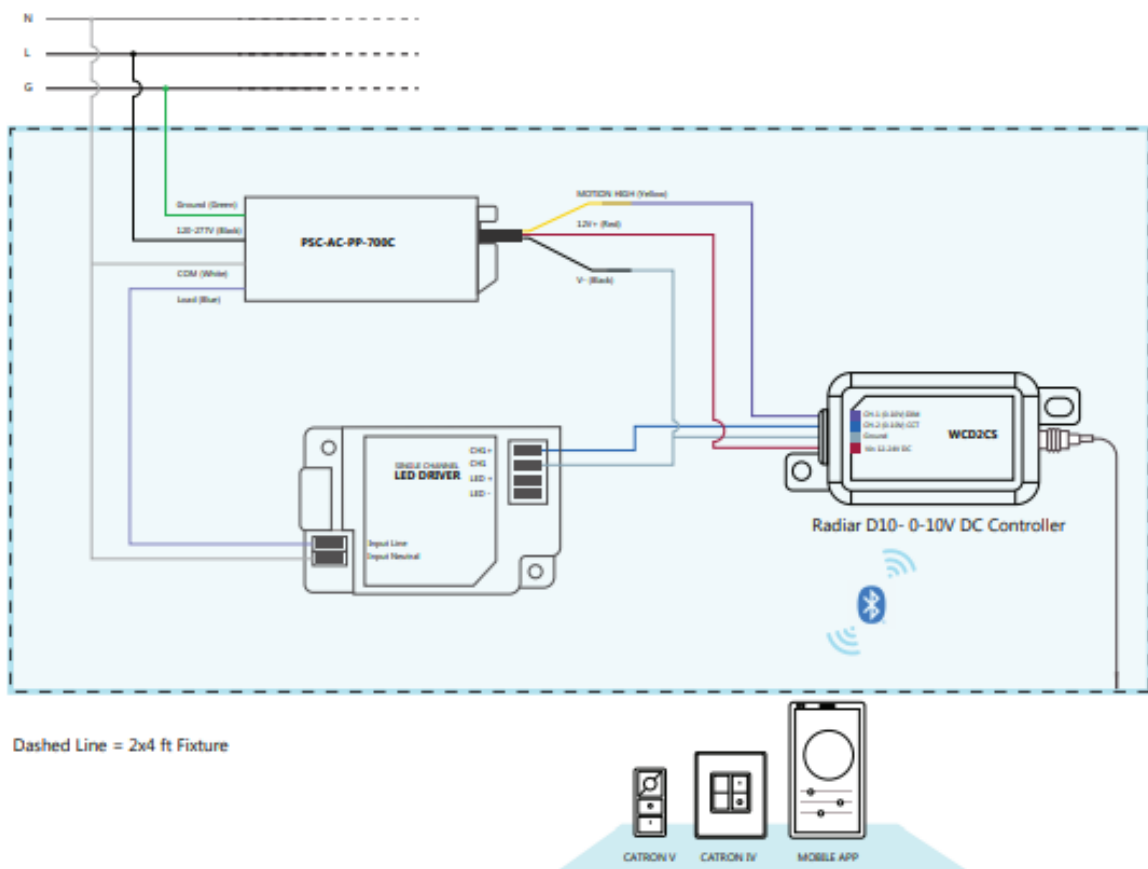
On the extrusion or on top of the fixture



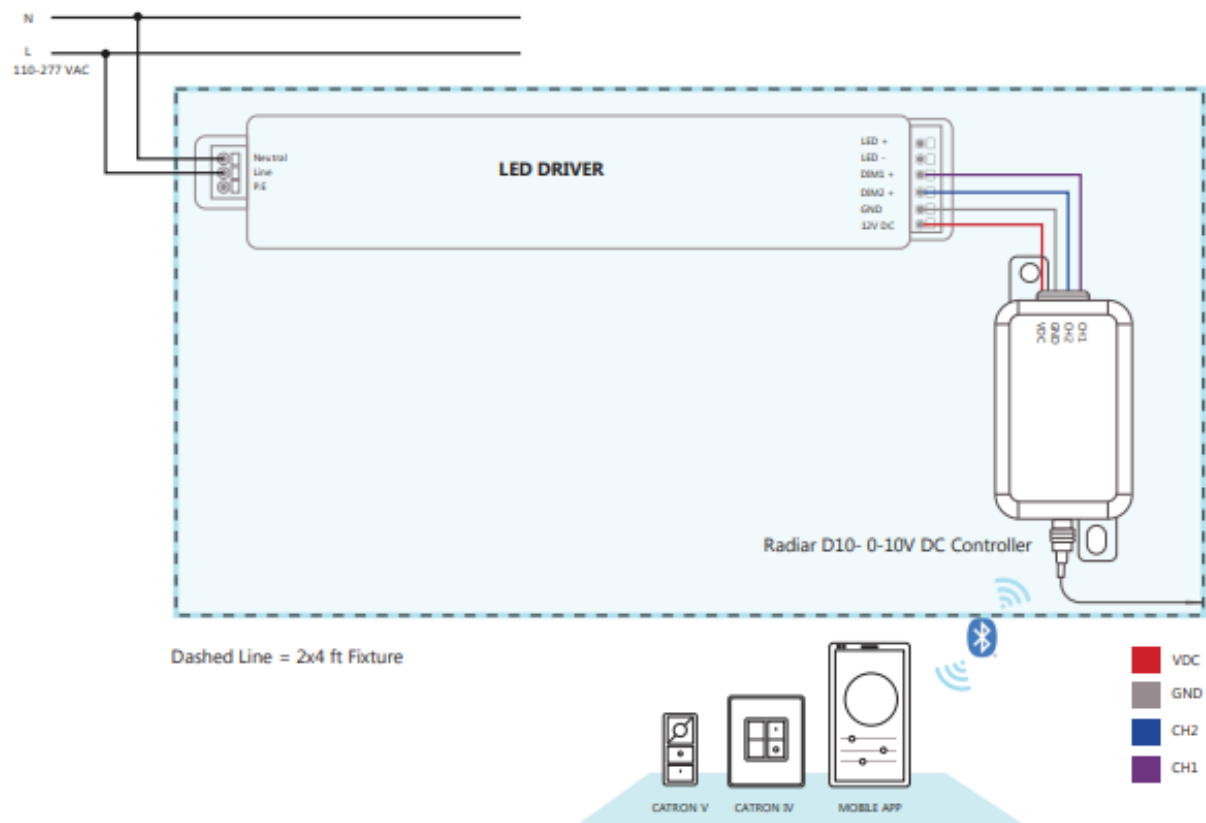
Wiring

There are 2 options for Radiar D10 wiring

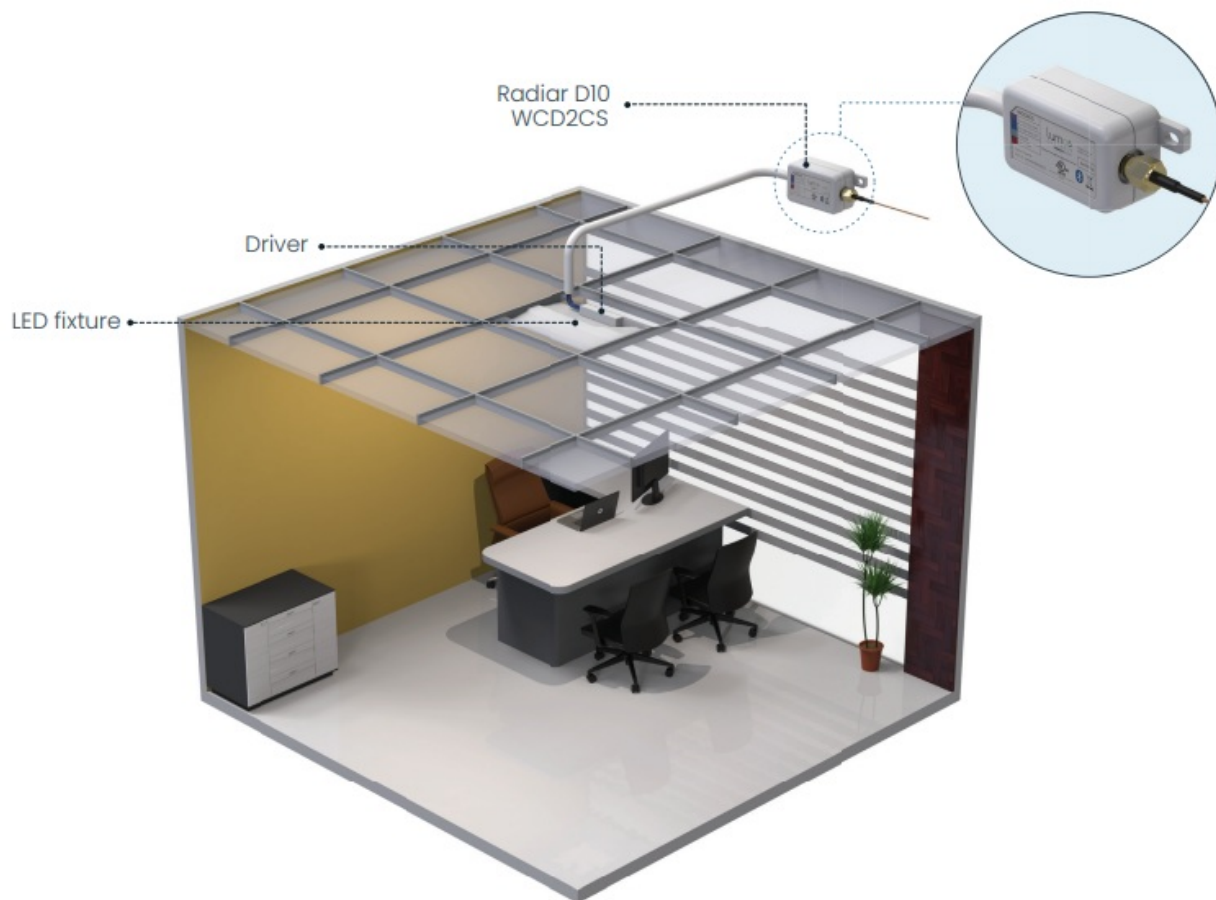
1. With Powerpack



2. Without Powerpack



Application



Troubleshooting

When returning from a Power Outage, lights go back to ON state.	This is normal operation. Our device has a fail-safe feature forcing the device to go to 50% or 100% and 0-10V at the full output on the loss of power. Alternatively, the device will return to its previous state after the power is restored, as configured using the Lumos Controls mobile app.
Device doesn't operate immediately after power ON	Check whether you have set up a transition time
Lights flickering	The connection is not appropriate The wires are not secured firmly with connectors
Lights did not turn ON	Circuit breaker tripped Fuse has blown Inappropriate wiring

Commissioning

Once powered up, the device will be ready to be commissioned via the Lumos Controls mobile app, available for free download on iOS and Android. To begin commissioning, click the '+' icon from the top of the 'Devices' tab. The app allows you to preset certain configurations which will be loaded after the device is added. The pre-configurations made using 'Commissioning Settings' will be sent to the devices being commissioned. Once commissioned, the device will be displayed in the 'Devices' tab and you can perform individual operations like ON/OFF/dimming from this tab.

Please visit – Help center for more details

Warranty

5-year limited warranty

Please find warranty terms and conditions


Note: Specifications may change without notice Actual performance can vary due to end-user environment and application

23282 Mill creek Dr #340 Laguna Hills, CA 92653 USA

www.lumoscontrols.com+1 949-397-9330

All Rights Reserved WiSilica Inc

Documents / Resources

	<p>Lumos CONTROLS Radiar D10 2 Channel DC Powered 0-10V Fixture Controller [pdf] User Guide</p> <p>Radiar D10, 2 Channel DC Powered 0-10V Fixture Controller, Radiar D10 2 Channel DC Powered 0-10V Fixture Controller, DC Powered 0-10V Fixture Controller, 0-10V Fixture Controller, Fixture Controller, Controller</p>
---	---

References

-  [Intelligent lighting controls | Lumos Controls](#)