



luminii RGBW-MC3 4 zone RGBW Controller Instruction Manual

[Home](#) » [luminii](#) » luminii RGBW-MC3 4 zone RGBW Controller Instruction Manual

luminii RGBW-MC3 4 zone RGBW Controller



Please read all **instructions** prior to installation and keep for future reference!

1. Ensure power to power supply is off before installing!
2. Use only with Class 2 power supply.
3. Controller requires 3 AAA batteries (not included).

Contents [[hide](#)]

[1 Installation Instructions](#)

- [1.1 Pair Receiver to RGBW Controller](#)
- [1.2 Assign simple color setting to a zone](#)
- [1.3 Assign complex color setting to Receiver](#)
- [1.4 Other functions](#)

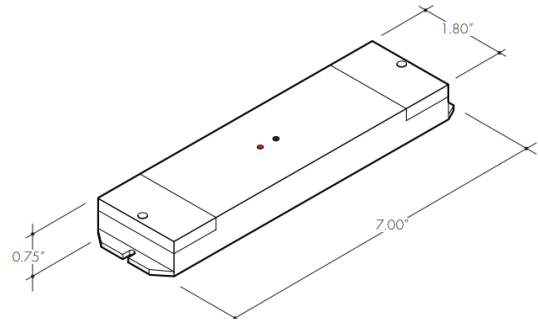
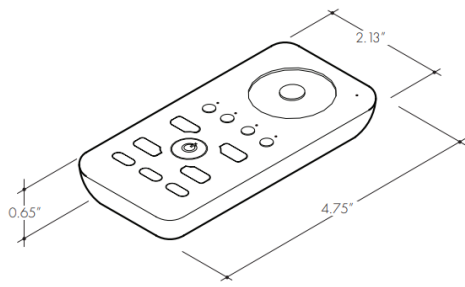
[2 CUSTOMER SUPPORT](#)

- [3 Documents / Resources](#)
- [4 Related Posts](#)

Installation Instructions

Controller #RGBW -MC3

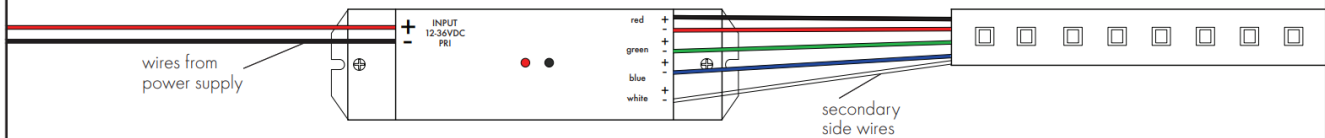
Receiver #RGBW -RC-R

1

The RGBW controller can keep track of up to 4 different lighting zones (settings). Each zone can be associated with more than one receiver. Each receiver can memorize one static color and one sequence of colors at a time.

Ensure power is off to power supply! Remove screws that hold in place the covers of the connection ports in the Receiver. Follow illustrated wiring diagram and after connections are established reinstall covers.

NOTE: Ensure that the correct power supply (voltage and wattage) is used to power the Line LED RGBW being connected on secondary side.

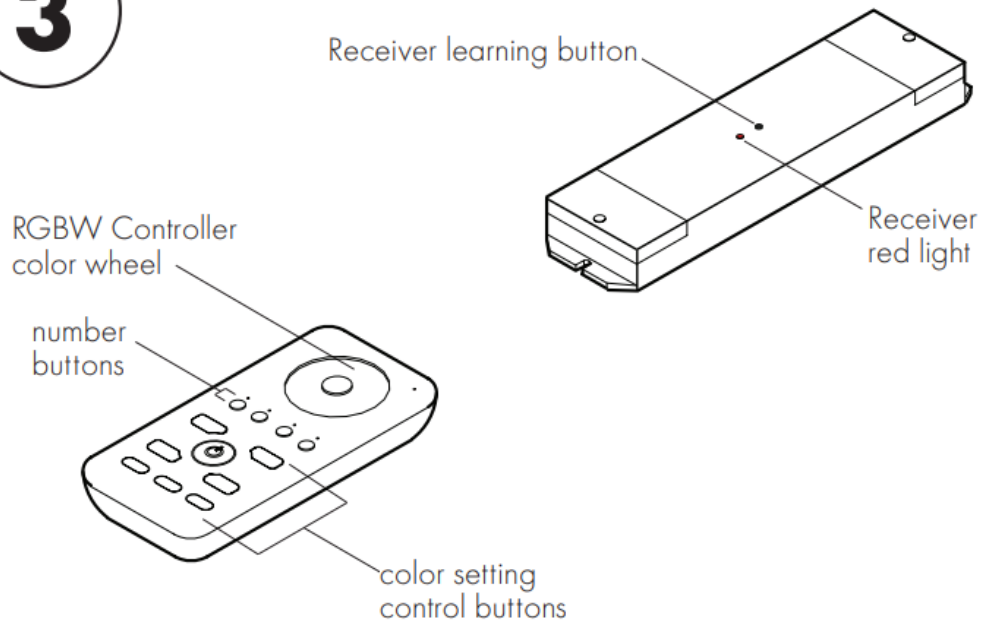
2

Connect the black negative wire from power supply to "-" minus sign on Receiver's primary side. Then connect the red positive wire from power supply to "+" plus sign on receiver's primary side.

Connect the black positive wire of the Line LED RGBW to the "+" plus sign of the first color on the secondary side of the Receiver. Then connect the 3 remaining wires to the "-" minus sign of each color.

Pair Receiver to RGBW Controller

3

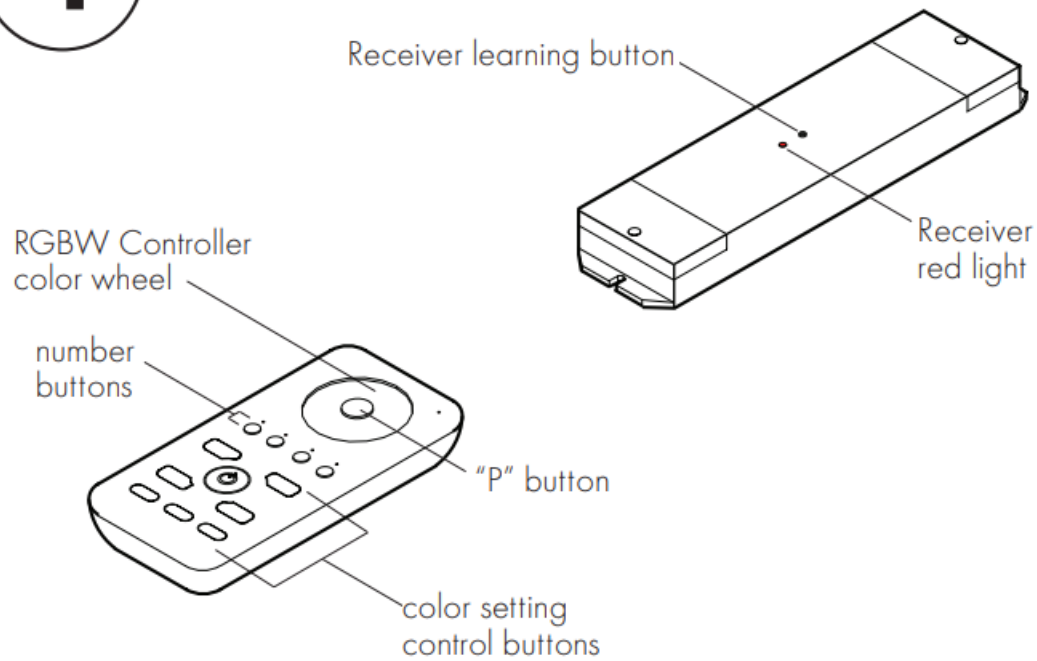


1. Turn the RGBW Controller ON by pressing the middle power button. Always make sure RGBW Controller is ON when using it. It automatically turns off after 10 seconds of inactivity.
2. Press learning (black) button on Receiver. Receiver (red light) will turn on.
3. Press and hold one of the number buttons (1-4) on the Controller depending on which number you want to assign to the Receiver.
4. If numbered button on Controller was pressed long enough, the red light on the Receiver will blink for about 3 seconds.
5. You have now paired the specific Receiver to the chosen number on the Controller.
6. Repeat steps above to pair more receivers to the same number (zone) on the Controller or one of the three other zones.

To reset a receiver at any time, simply press the learning button on receiver for 5 seconds until the red light on receiver shuts off. The Line LED connected to that receiver will default to the color red.

Assign simple color setting to a zone

4

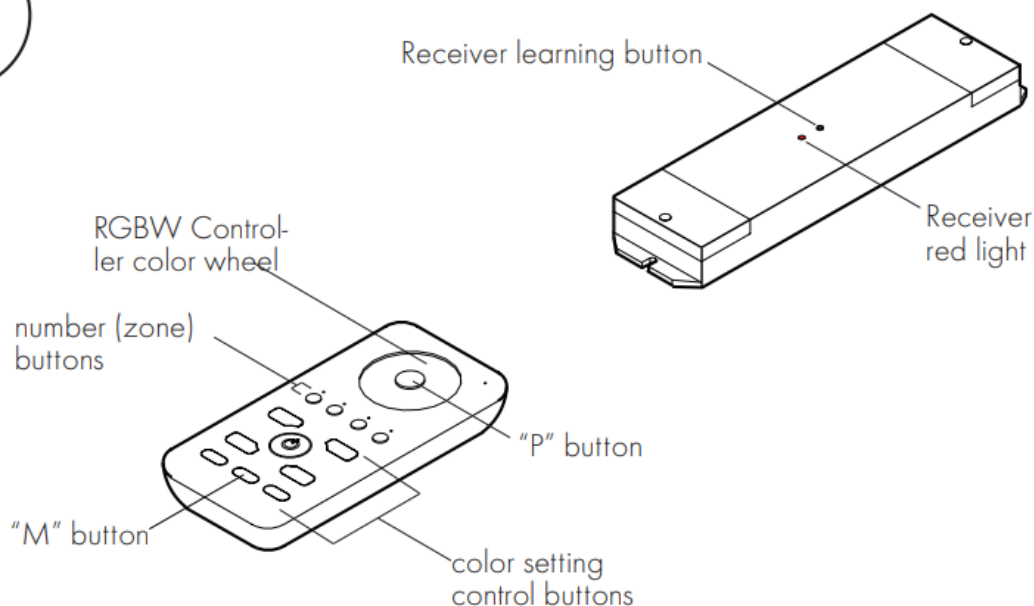


Every zone has to have a paired receiver to it before it can be assigned a color setting. Follow instructions on step 3 to pair receivers to any given zone (number on remote controller).

1. Turn the RGBW Controller ON by pressing the middle power button.
2. On Controller press number button for the zone that needs to be set. If this is the first time activating the receivers assigned to that zone (e.g. after they have been reset), hold the button pressed for a few seconds.
3. Select desired color on Controller color wheel. The LED strip/s controlled by this zone will show changes in color.
4. Adjust color brightness and saturation with "B" and "O" buttons on Controller. When desired color is achieved, press "P" button in the middle of the color wheel to lock that color setting.
5. Every time the specific zone is turned on, the LED strip will light up with the color that was set above.

Assign complex color setting to Receiver

5



To change the speed of a programmed sequence, simply choose the specific zone (number) on the Controller and adjust speed with "S" buttons. Up to 8 different speeds are available.

To change the speed of a programmed sequence, simply choose the specific zone (number) on the Controller and adjust speed with "S" buttons. Up to 8 different speeds are available.

1. Turn the RGBW Controller ON by pressing the middle power button.
2. On Controller press number button for zone needed to be programmed.
3. Press "P" button to start programming the sequence.
4. Select sequentially multiple colors on color wheel and adjust color brightness and saturation with "B" and "O" buttons on Controller. When desired color sequence is achieved, press "P" button in the middle of the color wheel to finish the program setting.
5. Run the program by pressing "M" button.
6. When receivers are turned off they automatically turn back on in the static color mode. Simply select desired zone and press "M" to resume the programmed color sequence.

Other functions

1. Turn off only one given zone at a time by pressing and holding the number for that zone. Press and hold again to turn it back on.
2. Assign multiple receivers to the same zone by simply pairing (press learning button on both) those receivers to the same zone at the same time. It is also possible to add receivers to a zone by pairing them at a later time: Ensure the LED strip already paired is turned off, then proceed with pairing functions from step 3 to add new receiver to the same zone. The static color will need to be reset on all receivers but the color sequence of the specific zone will now apply to all receivers paired with it (press "M" to start).
3. Quickly assign same color setting to two or more zones at a time by pressing the zone numbers in sequence

on the remote, then pressing “P”, then choosing desired color or color sequence on color wheel. All LED strips controlled by those zones will change simultaneously.

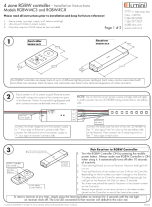
*LUMINII RESERVES THE RIGHTS TO CHANGE SPECIFICATIONS WITHOUT NOTICE

CUSTOMER SUPPORT

7777 N . Merrimac Ave
Niles, IL 60714
T 224.333.6033
F 224.757.7557
info@luminii.com
www.luminii.com



Documents / Resources

	<p>luminii RGBW-MC3 4 zone RGBW Controller [pdf] Instruction Manual RGBW-MC3 4 zone RGBW Controller, RGBW-MC3, 4 zone RGBW Controller, RGBW Controller, RGBW-RC-R</p>
--	---