

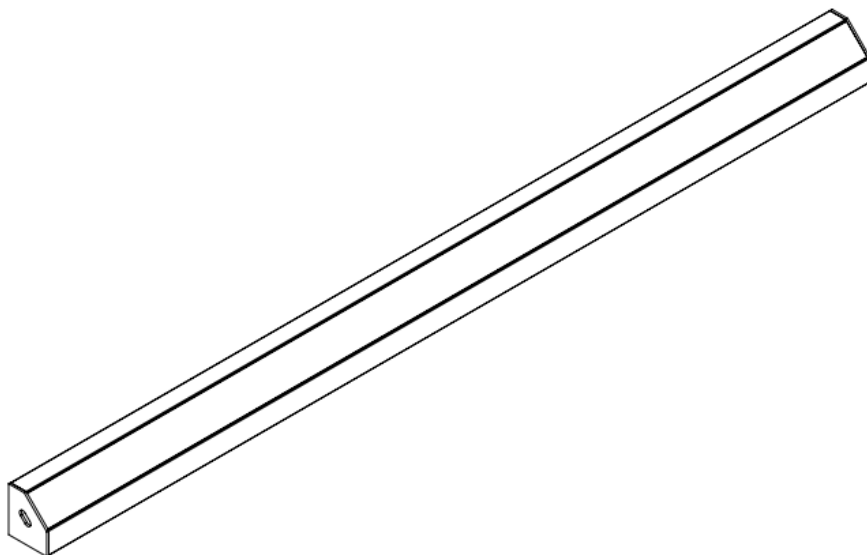


# luminii MK45-XX Linear Valance Illumination System Instruction Manual

[Home](#) » [luminii](#) » luminii MK45-XX Linear Valance Illumination System Instruction Manual 



**Myka 45 – Installation Instructions  
Model MK45-XX**



**Myka 45**

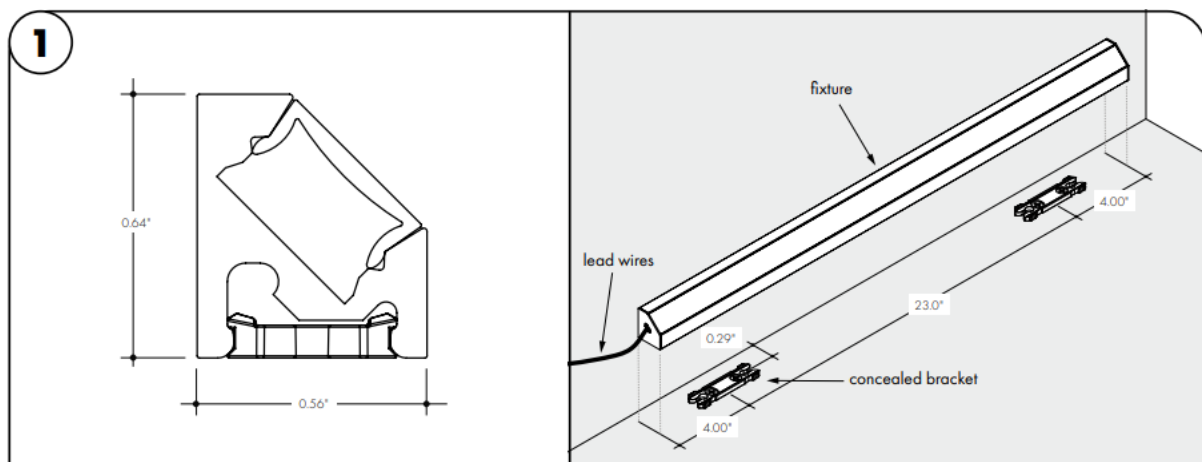
## Contents

- 1 MK45-XX Linear Valance Illumination System
- 2 Documents / Resources
  - 2.1 References

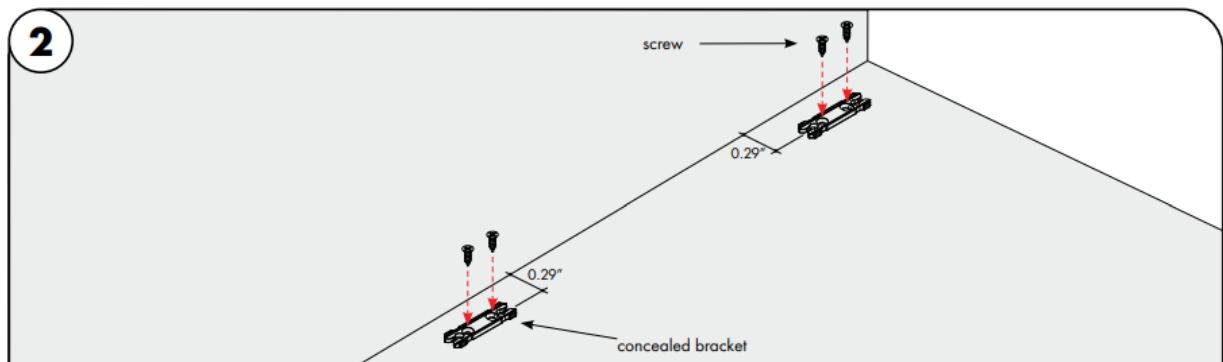
### MK45-XX Linear Valance Illumination System

Please read all instructions prior to installation and keep for future reference!

1. PRODUCT TO BE INSTALLED BY A QUALIFIED ELECTRICIAN.
2. USE ONLY WITH CLASS 2 POWER UNIT.
3. 24 VOLTS DC.
4. SUITABLE FOR DAMP LOCATIONS.
5. SURFACE MOUNT ONLY.
6. SUITABLE FOR INSTALLATION WITHIN THE CLOSET STORAGE SPACE WHEN USED WITH TAPE OUTPUTS 5.7W/FT OR LESS

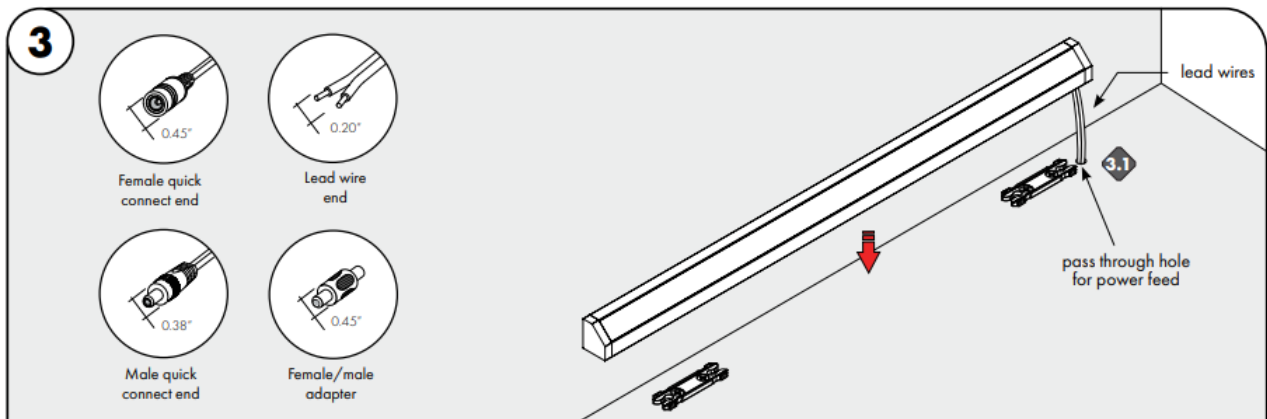


- 1.1 Determine the location of where the fixture(s) will be installed. Lay the fixture(s) on the surface, and make any necessary reference marks for the concealed bracket. Make marks 4" from each end of the fixture(s) and also every 23" in between. Use the fixture profile and mounting bracket detail, for any additional details.
- 1.2 Lay the concealed bracket onto the reference mark points and secure using the provided hardware.



- 2.1 Align the mounting brackets to the marks, followed by securing each mounting bracket with 2 screws. Snap the extrusion into the mounting brackets.

2.2 To remove the extrusion from the mounting brackets, carefully insert a flat screwdriver to the bottom edge of the extrusion then pull up until the extrusion pops up.

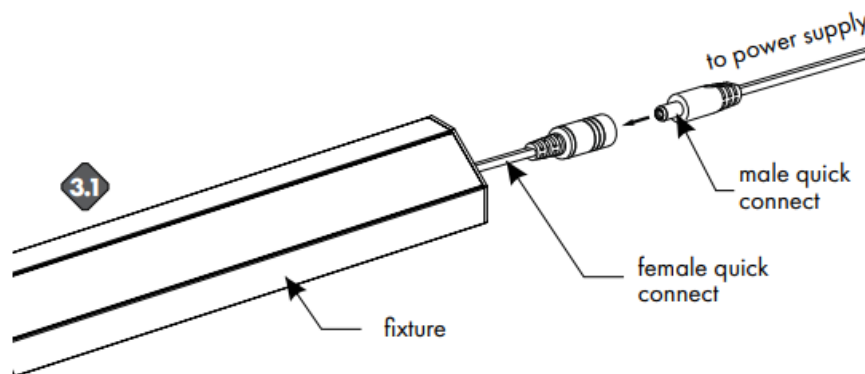


3.1 If necessary make any pass through holes for wire lead/connector to the surface, depending on the power feed option. Then snap the fixture into the concealed mounting bracket to secure in place.

4

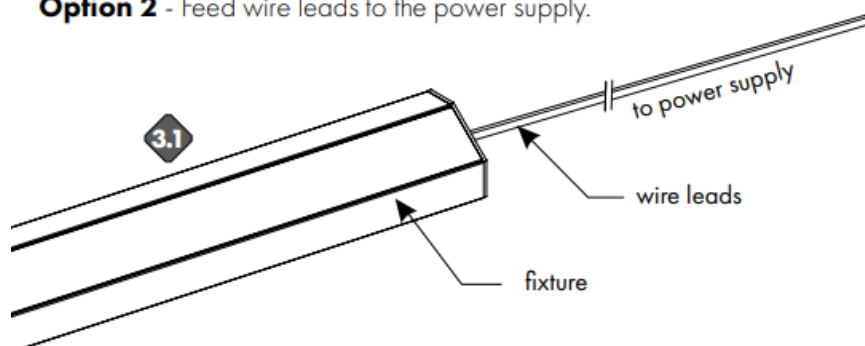
4.1 Follow one of the two options to connect the fixture to the power supply.

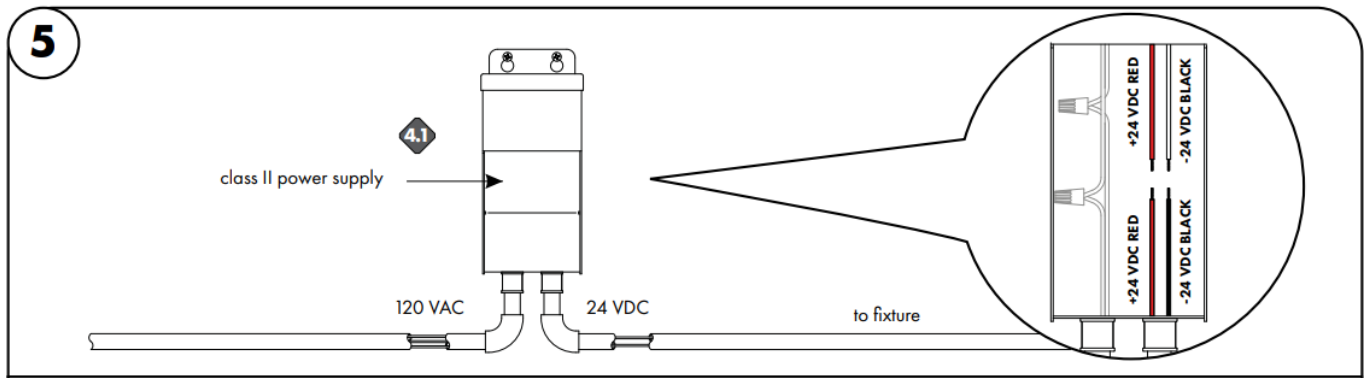
**Option 1** – Secure female quick connect to male quick connect. Feed male quick connect wire through conduit to power supply.



OR

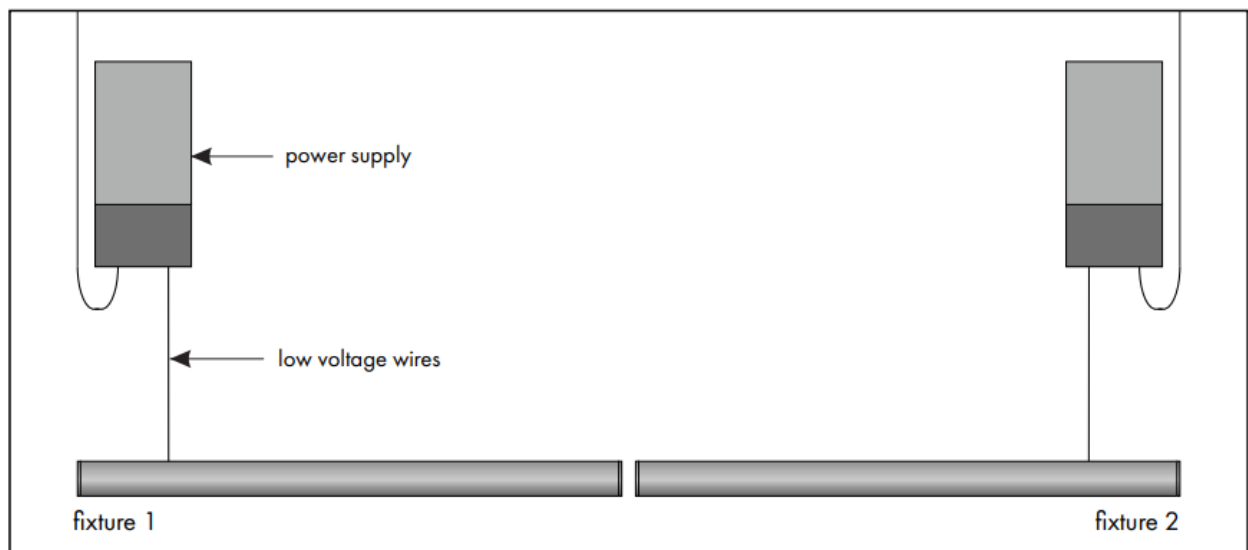
**Option 2** - Feed wire leads to the power supply.



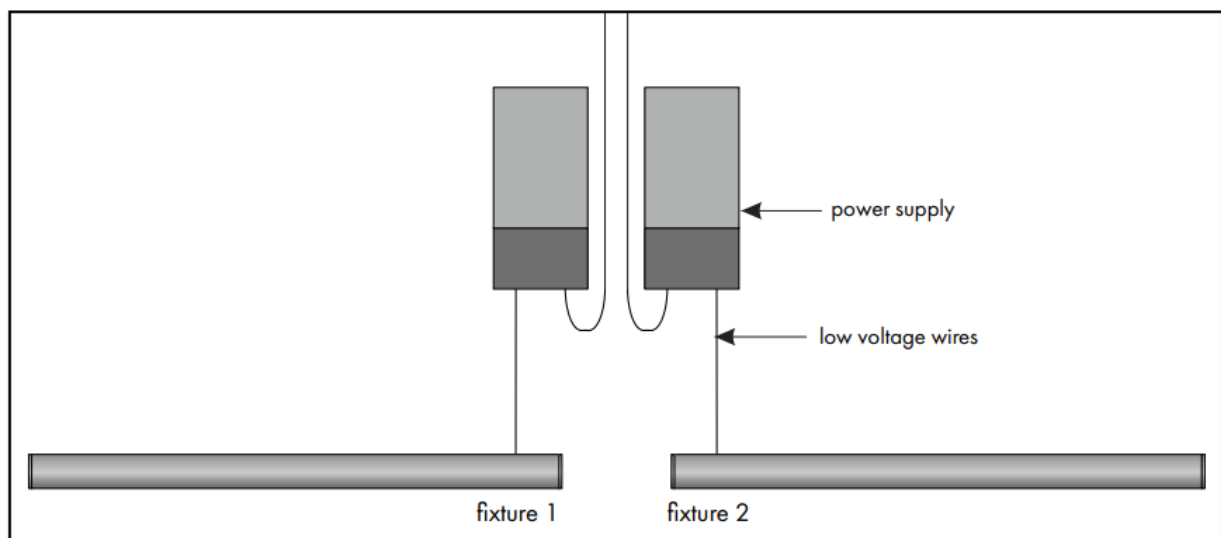


5.1 Connect +24 VDC red wire from the fixture to the power supplies +24 VDC red wire using a wire nut. Then connect the -24 VDC black wire from the fixture to the power supplies -24 VDC black wire using a wire nut.

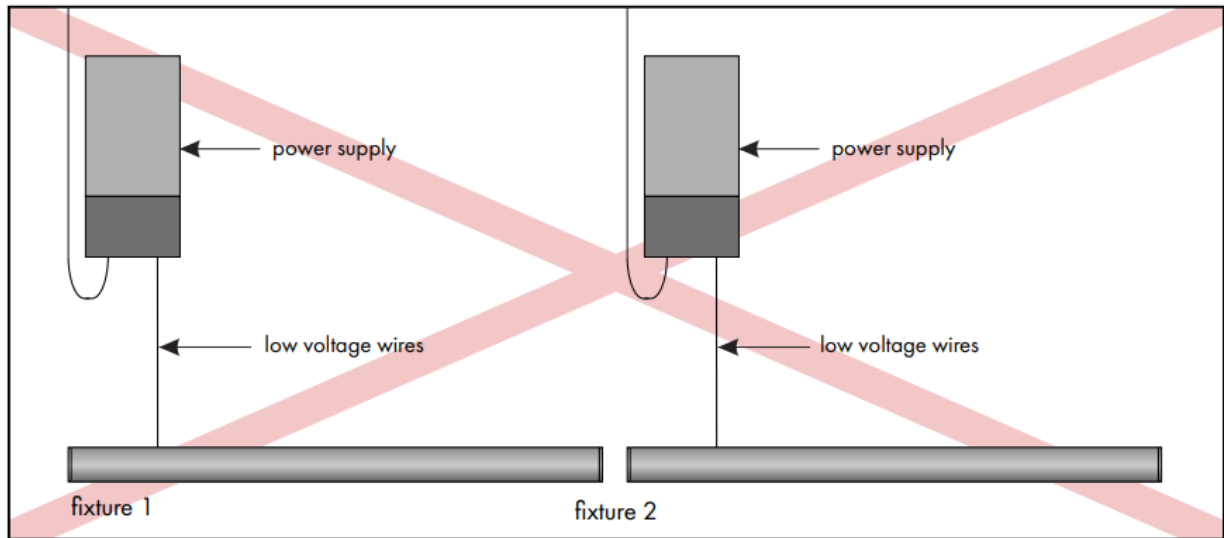
### power supplies at the end of the run



### power supplies in the middle of the run



### consecutive layout, NOT RECOMMENDED



\*LUMINII RESERVES THE RIGHTS TO CHANGE SPECIFICATION & INSTRUCTION WITHOUT NOTICE



7777 Merrimac Ave

Niles, IL 60714

T 224.333.6033

F 224.757.7557

[info@luminii.com](mailto:info@luminii.com)

[www.luminii.com](http://www.luminii.com)



LISTED

REV0.2

02022024

## Documents / Resources

	<p><a href="#">luminii MK45-XX Linear Valance Illumination System</a> [pdf] Instruction Manual MK45-XX Linear Valance Illumination System, MK45-XX, Linear Valance Illumination System, Valance Illumination System, Illumination System</p>
--	--

## References

- [Home - Luminii](#)
- [User Manual](#)

This website is an independent publication and is neither affiliated with nor endorsed by any of the trademark owners. The "Bluetooth®" word mark and logos are registered trademarks owned by Bluetooth SIG, Inc. The "Wi-Fi®" word mark and logos are registered trademarks owned by the Wi-Fi Alliance. Any use of these marks on this website does not imply any affiliation with or endorsement.