



# Luminii LLX18-RGBW Linear LED strip Installation Guide

[Home](#) » [luminii](#) » Luminii LLX18-RGBW Linear LED strip Installation Guide

## Contents [ [hide](#) ]

- [1 Luminii LLX18-RGBW Linear LED strip](#)
- [2 INSTALLATION INSTRUCTION](#)
- [3 WIRING DIAGRAM](#)
- [4 Documents / Resources](#)
  - [4.1 References](#)
- [5 Related Posts](#)

luminii

## Luminii LLX18-RGBW Linear LED strip



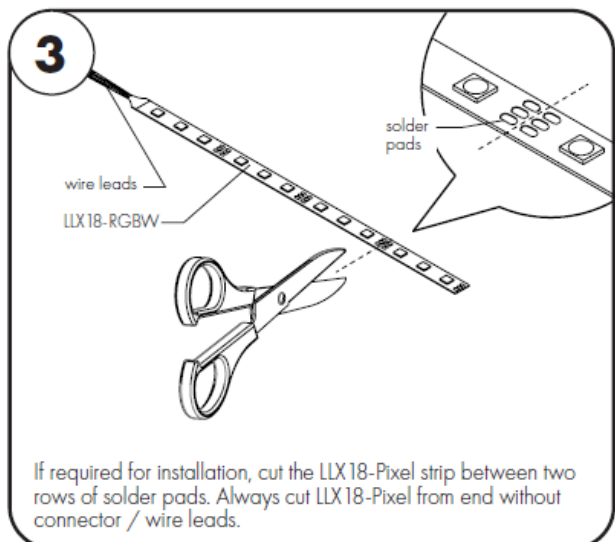
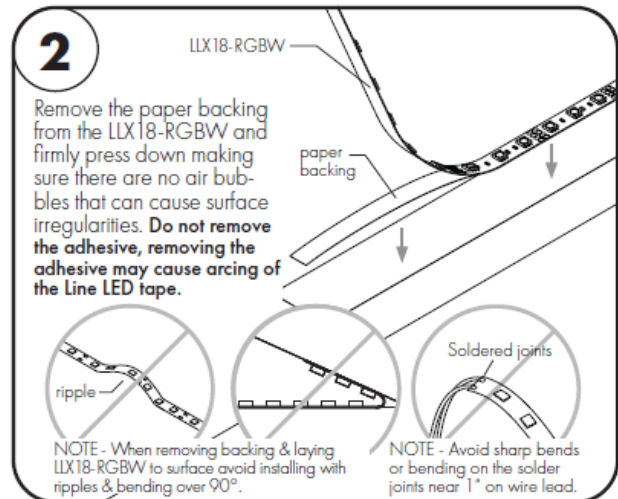
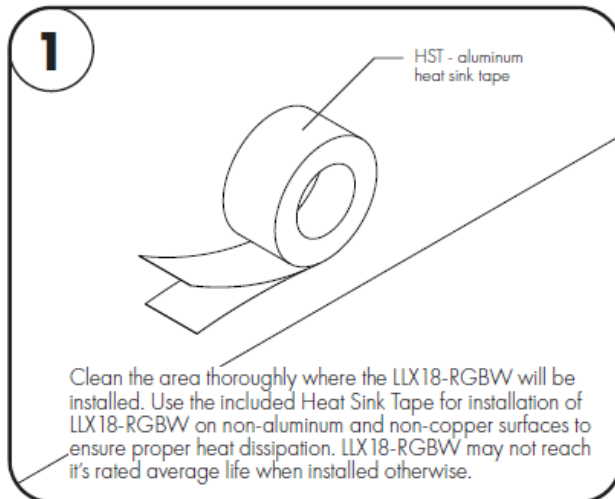
**Please read complete instruction prior to installation and keep for future reference!**

1. Product should be installed by a qualified electrician.
2. Prior to installation ensure power is off at fuse box to prevent electrical shock.
3. Use only with Class 2 power unit. Utiliser seulement avec Classe 2 unite d'alimentation electrique.
4. Suitable for Damp Locations. Convient Aux Emplacements Humides.

5. For under-cabinet or shelf mount.
6. Conforms to UL STD 2108. Certified to CSA STD C22.2 No.250.0.

**Attention:** Always test LLX18-Pixel before installing. Connect LLX18-Pixel to power supply to ensure it is working properly and no damage has occurred during shipping.

## INSTALLATION INSTRUCTION



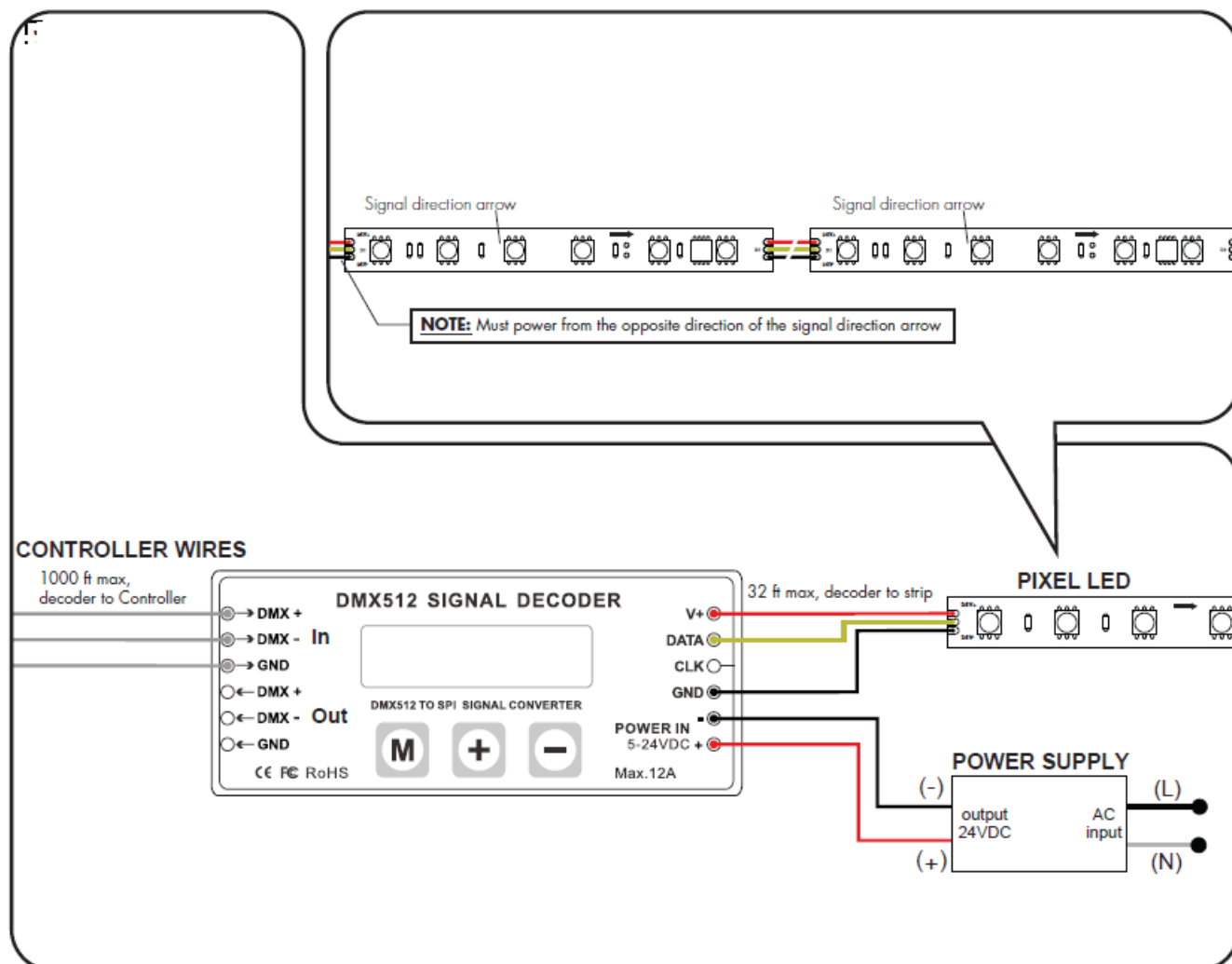
**Please read complete instruction prior to installation and keep for future reference!**

1. Product should be installed by a qualified electrician.
2. Prior to installation ensure power is off at fuse box to prevent electrical shock.
3. Use only with Class 2 power unit. Utiliser seulement avec Classe 2 unite d'alimentation électrique.
4. Suitable for Damp Locations. Convient Aux Emplacements Humides.
5. For under-cabinet or shelf mount.
6. Conforms to UL STD 2108. Certified to CSA STD C22.2 No.250.0.

## WIRING DIAGRAM

**NOTE:** Please make sure that power is turned off before wiring. Also, ensure that the correct power supply (voltage and wattage) is used to power the LED strips connected to the decoder. Follow illustrated wiring diagram. Use screwdriver to open and close connection slots.

**NOTE:** When connecting two or more LED strip lights or light fixtures, always make sure the signal direction arrows are pointing to same direction AlsoThe signal direction arrow should appear on each section (cut increment) of LED strip, ensure that the correct power.



## Documents / Resources

	<a href="#">Luminii LLX18-RGBW Linear LED strip</a> [pdf] Installation Guide LLX18-RGBW Linear LED strip, LLX18-RGBW, Linear LED strip, LED strip
--	--

## References

- [Home - Luminii](#)