



Luminii LL60X2 LineLED 60X2 Series Double Row Linear LED Strip Installation Guide

[Home](#) » [luminii](#) » Luminii LL60X2 LineLED 60X2 Series Double Row Linear LED Strip Installation Guide 



Contents

- [1 LL60X2 LineLED 60X2 Series Double Row Linear LED Strip](#)
- [2 Documents / Resources](#)
 - [2.1 References](#)
- [3 Related Posts](#)

LL60X2 LineLED 60X2 Series Double Row Linear LED Strip

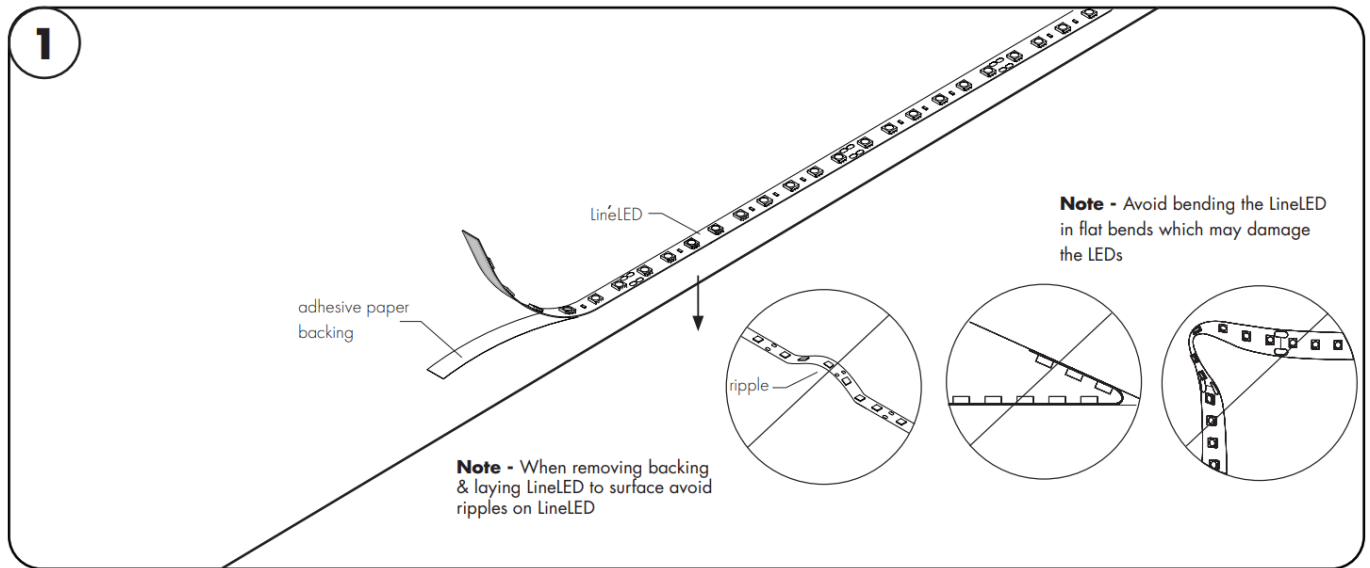
Please read all instructions prior to installation and keep for future reference!

1. PRODUCT SHOULD BE INSTALLED BY A QUALIFIED ELECTRICIAN
2. ENSURE POWER IS OFF AT FUSE BOX PRIOR TO INSTALLTION TO PREVENT ELECTRICAL SHOCK.
3. USE ONLY WITH CLASS 2 POWER UNIT
4. SUITABLE FOR DAMP LOCATIONSFPO
5. FOR UNDER CABINET OR SHELF MOUNT
6. CONFORMS TO UL STD 2108. CERTIFIED TO CSA STD C22.2 NO.250.0.

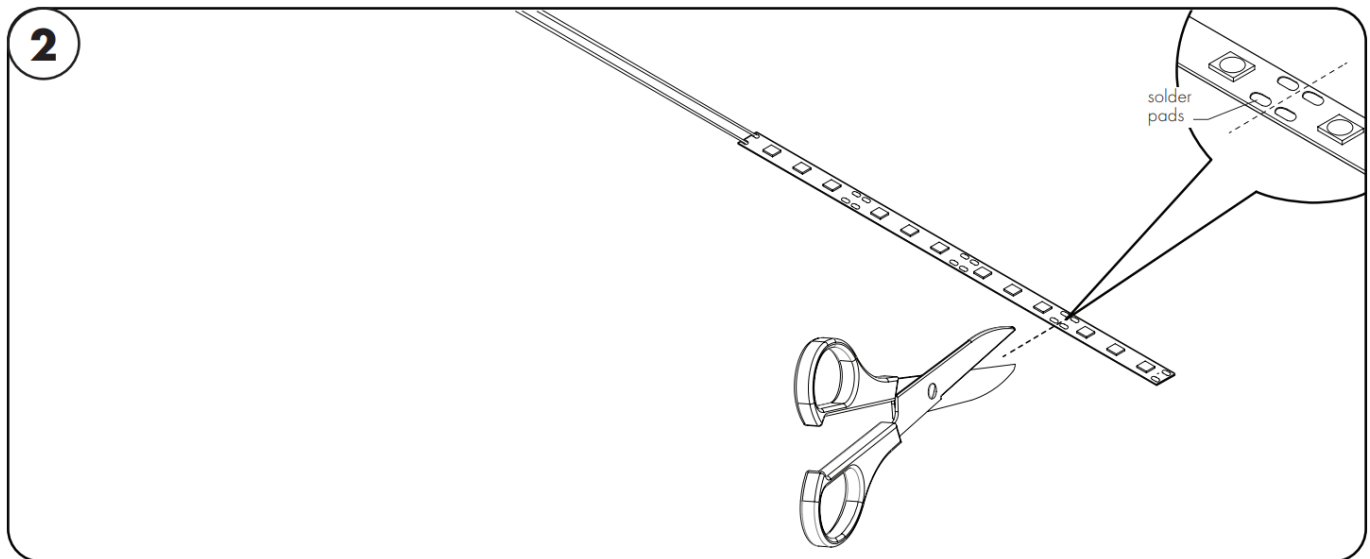
Attention: Always test lineLED before installing. Connect lineLED to power supply to ensure it is working properly and no damage has occurred during shipping.

1.1 Clean the area thoroughly where the lineLED will be installed.

Remove the paper backing from the lineLED and firmly press down making sure there are no air bubbles that can cause surface irregularities. Do not remove the adhesive, removing the adhesive may cause arcing of the lineLED tape.



2.1 If length of the lineLED needs to be adjusted on site, simply cut the LED strip in between solder pads. Always cut from end with no connector/wire leads.

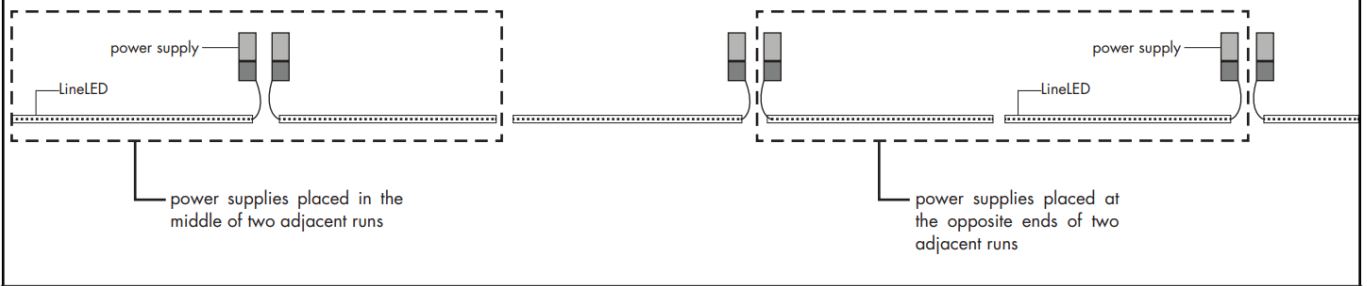


Please read all instructions prior to installation and keep for future reference!

1. PRODUCT SHOULD BE INSTALLED BY A QUALIFIED ELECTRICIAN
2. ENSURE POWER IS OFF AT FUSE BOX PRIOR TO INSTALLTION TO PREVENT ELECTRICAL SHOCK.
3. USE ONLY WITH CLASS 2 POWER UNIT
4. SUITABLE FOR DAMP LOCATIONSFPO
5. FOR UNDER CABINET OR SHELF MOUNT
6. CONFORMS TO UL STD 2108. CERTIFIED TO CSA STD C22.2 NO.250.0.

RECOMMENDED LAYOUT FOR MULTIPLE ADJACENT RUNS OF LINELED FED WITH SEPARATE POWER SUPPLIES

3

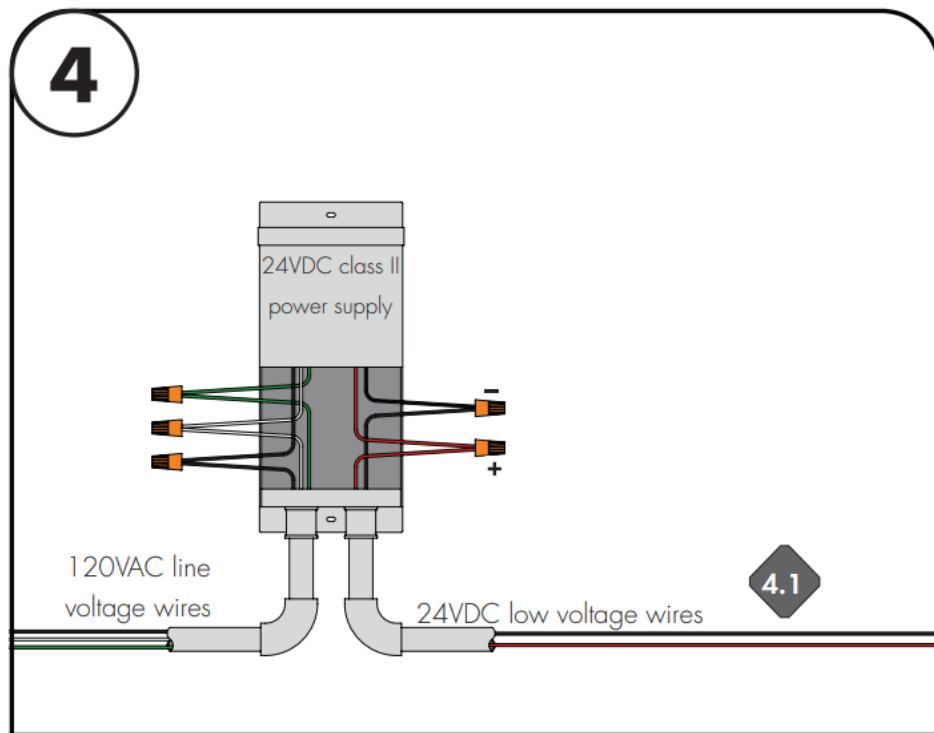


3.1 Position power supplies either in the middle of two runs or at the opposite ends.

3.2 If length of the lineLED needs to be adjusted on site, simply cut the LED strip in between solder pads. Always cut from end with no connector/wire leads.

Connect the positive red wire to the RED low voltage wire from power supply. Also, connect the negative black wire to the BLACK low voltage wire from power supply.

4



4.1 Always ensure power to power supply is off! Follow diagrams to connect power feed wires to power supply. Refer to power supply instructions for wiring line voltage side.

*LUMINII RESERVES THE RIGHTS TO CHANGE SPECIFICATION & INSTRUCTION WITHOUT NOTICE



REV0.3 0 4132 0 2 2

7777 Merrimac Ave

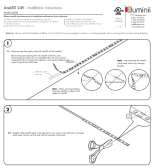
Niles, IL 60714

T 224.333.6033 F 224.757.7557

info@luminii.com

www.luminii.com

Documents / Resources

	<p>Luminii LL60X2 LineLED 60X2 Series Double Row Linear LED Strip [pdf] Installation Guide</p> <p>LL60X2 LineLED 60X2 Series Double Row Linear LED Strip, LL60X2, LineLED 60X2 Series Double Row Linear LED Strip, Double Row Linear LED Strip, Linear LED Strip</p>
---	--

References

-  [Home - Luminii](#)