

**Lumineux**

**440018 Smart  
Industrial  
Gateway**



# Lumineux 440018 Smart Industrial Gateway Installation Guide

[Home](#) » [Lumineux](#) » Lumineux 440018 Smart Industrial Gateway Installation Guide 

## Contents

- [1 Lumineux 440018 Smart Industrial Gateway](#)
- [2 FAQ](#)
- [3 Specifications](#)
- [4 Box Contents](#)
- [5 Product Information](#)
- [6 Installation Procedure](#)
- [7 Features](#)
- [8 Dimensions](#)
- [9 Contact](#)
- [10 Documents / Resources](#)
  - [10.1 References](#)
- [11 Related Posts](#)

**Lumineux**

**Lumineux 440018 Smart Industrial Gateway**



### **Specifications:**

- Versatile Connectivity: Wi-Fi, Ethernet, Bluetooth, Zigbee
- Intelligent Automation: Cloud and local controls for Bluetooth or Zigbee devices
- Durable and Reliable: Wide operating temperature and humidity ranges
- Security: Two-way encryption, OTA updates, maintenance capabilities

### **Equipment Required For Installation:**

Manby Park, Manby, Louth, Lincolnshire, LN11 8UT Lumineux Group is a trading name of B&T Associates Ltd.

### **Installation Procedure:**

1. Install the supplied antennas to connectors located at both ends of the gateway.
2. Install the fitting into the desired location. Install the 'truSmart' app on your phone/tablet.
3. The plug-in power adaptor or POE ethernet cable (if wire connection is used), gateway should come on and after 30 seconds Blue LED should start flashing, indicating the Gateway is in pairing mode. If blue LED does not start flashing after 30 seconds, hold the 'RES' button for 10 seconds.
4. Connect your phone to the same Wi-Fi network the Gateway is going to be connected to. \*If wired connection is used, proceed to the next step.
5. Navigate to the desired location in device control through the mobile app in your project and add the gateway, making sure both Wi-Fi ID and the password are correct once requested. \*If wired connection is used, the Gateway will not ask for a password.
6. Add your other true smart devices to the required area.

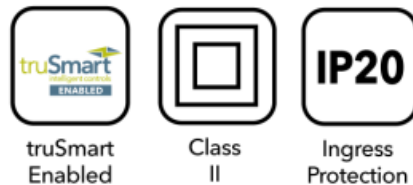
### **FAQ**

- **Q: What should I do if the Blue LED does not start flashing after 30 seconds?**

- A: Hold the 'RES' button for 10 seconds to initiate pairing mode.
- **Q: Do I need to connect my phone to the same Wi-Fi network as the Gateway during setup?**
  - A: Yes, it is recommended to connect your phone to the same Wi-Fi network for smooth setup.

## Specifications

Input	120—240V AC 50/60Hz
Power	10W
Operating Temp	-10°C— +45°C
Working Range	Up to 20m (Bluetooth)
Working Channel	11-26 (Zigbee)
Wireless Protocol	Zigbee   Bluetooth   Wi-Fi
Control System	truSmart



## Box Contents

- 3 x Universal Antenna
- 1 x Wired Universal Antenna
- Securing Kit
- AC Adaptor

## Stop

READ THESE INSTRUCTIONS THOROUGHLY BEFORE INSTALLATION KEEP THESE INSTRUCTIONS FOR FUTURE REFERENCE.

## IMPORTANT:

This product must be installed by a qualified electrician or competent person and in accordance with current building and IET wiring regulations.

## Warranty:

This product is warranted for a period of Years from the date of purchase\*\*. The warranty could be invalidated should the product not be installed according to these instructions, outside the scope of the specification or the product has been altered or tampered with in any way. Please see the website for terms and conditions.

## Product Information

Sanford truSmart Industrial Gateway seamlessly connects all your truSmart devices to the SAAS cloud service via Zigbee & Bluetooth protocol eliminating the need for wiring.

This integration enables all your devices to be configured for executing scenes, creating automation or reporting to your control panel at <https://cloud.trusmart.co.uk>

## Installation Procedure

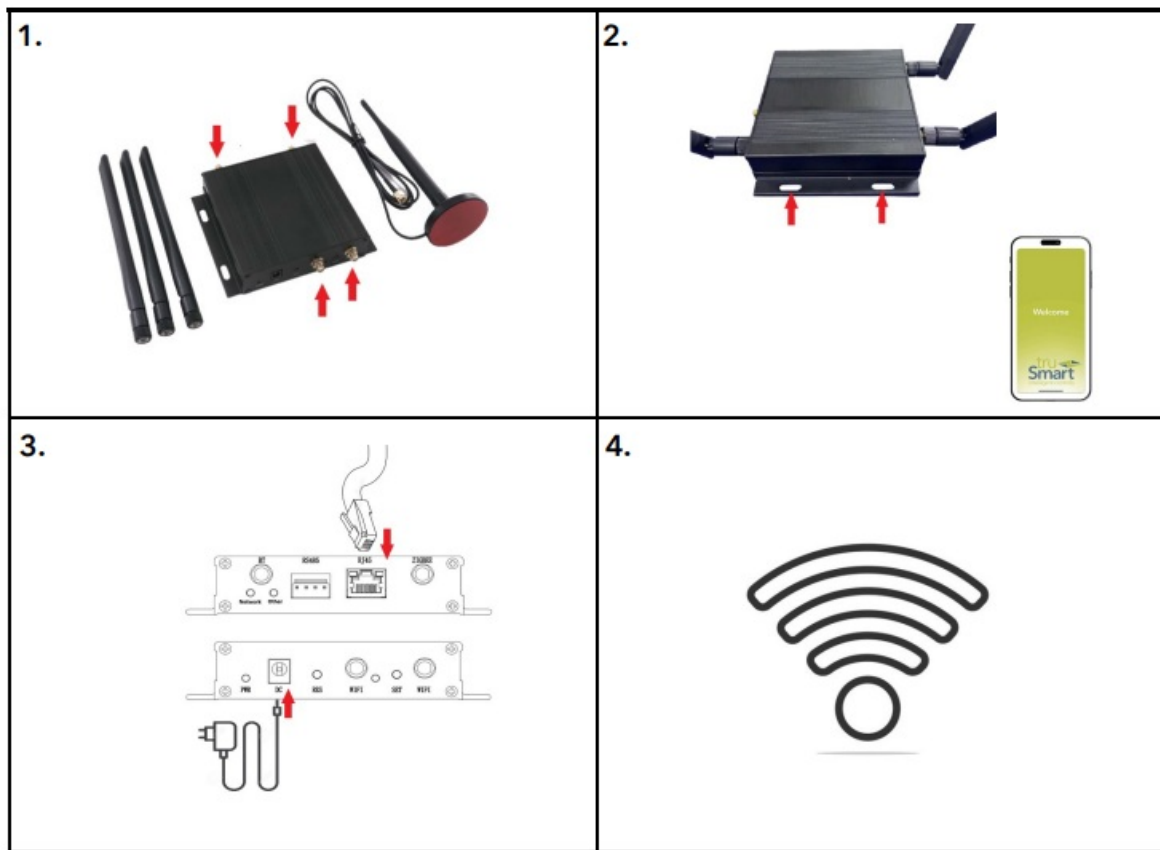
1. Install the supplied antennas to connectors located at both ends of the gateway.
2. Install the fitting into the desired location. Install the 'truSmart' app on your phone/tablet (you can follow QR codes below for easy download).
3. Plug-in the power adaptor or POE ethernet cable (if wire connection is used), the gateway should come on and after 30 seconds Blue LED should start flashing, indicating the Gateway is in pairing mode. If blue LED does not start flashing after 30 seconds hold the 'RES' button for 10 seconds.
4. Connect your phone to the same Wi-Fi network the Gateway is going to be connected to. \*If wired connection is used proceed to the next step.
5. Navigate to the desired location in device control through the mobile APP in your project and add the gateway, making sure both the Wi-Fi ID and the password are correct once requested. \*If a wired connection is used the Gateway will not ask for a password.
6. Add your other truSmart devices to the required area.
7. Once all device adding is complete click on the Gateway in the device list, select to 'Add devices', and then 'Associate Existing Bluetooth Devices'. This will allow all the previously added Bluetooth devices to connect directly to the Gateway.
8. To acquire the Gateway Zigbee Channel number for connection of Zigbee devices navigate to device information.



Android APP  
Download



iOS APP  
Download



## Features

### Versatile Connectivity:

Integrates Wi-Fi, Ethernet, Bluetooth, and Zigbee, enabling easy remote control of devices with simple network configuration and multi-device support.

### Intelligent Automation:

Offers cloud and local automation controls for efficient operation of Bluetooth or Zigbee devices, ensuring functionality even without connection to the Internet.

### Durable and Reliable:

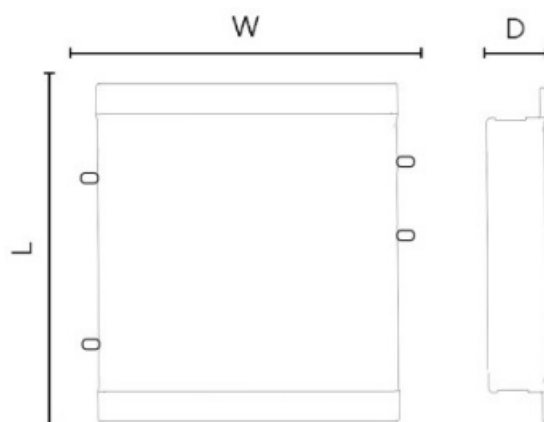
Built for tough environments with wide operating temperature and humidity ranges, meets strict electromagnetic compatibility standards for stable performance.

### Secure and Maintainable:

Features two-way encryption for device security, supports OTA updates, and provides comprehensive maintenance capabilities enabling you to control / monitor / install devices remotely

## Dimensions

Part No.	Description	L (mm)	W (mm)	D (mm)	Weight
440018	truSmart Sanford Industrial Gateway	132	127	29	370g



### End Of Life Disposal:


Disassembly instructions for end-of-life disposal are available on the website. Disposal of Electronic Equipment WEEE Directive 2002/96/EC This product falls within the scope of the Waste Electrical & Electronic Equipment Directive (WEEE), which means the product should not be disposed of as normal household waste. Please recycle where facilities exist or check with your Local Authority. RoHS – All components and materials used in this product are RoHS 2002/95/EC compliant. Specifications may change from time to time. The information contained in this leaflet is for guidance only and should not be considered as always accurate and should be treated as not representative

Manby Park, Manby, Louth, Lincolnshire, LN11 8UT Lumineux Group is a trading name of B&T Associates Ltd.

### Contact

- [www.lumineux.co.uk](http://www.lumineux.co.uk)
- +44(0)1507 328031

### Documents / Resources

	<a href="#">Lumineux 440018 Smart Industrial Gateway</a> [pdf] Installation Guide 440018 Smart Industrial Gateway, 440018, Smart Industrial Gateway, Industrial Gateway, Gate way
---	--

### References

- [LED Floodlight manufacturer | Flood light suppliers | Industrial | Linear | Recessed | Emergency | Exterior | Sports Lighting](#)
- [cloud.trusmart.co.uk](https://cloud.trusmart.co.uk)
- [User Manual](#)

## **Manuals+. Privacy Policy**

This website is an independent publication and is neither affiliated with nor endorsed by any of the trademark owners. The "Bluetooth®" word mark and logos are registered trademarks owned by Bluetooth SIG, Inc. The "Wi-Fi®" word mark and logos are registered trademarks owned by the Wi-Fi Alliance. Any use of these marks on this website does not imply any affiliation with or endorsement.