



# Lumineux 421065 Redbrook Emergency Exit Box Instruction Manual

[Home](#) » [Lumineux](#) » Lumineux 421065 Redbrook Emergency Exit Box Instruction Manual 

Lumineux 421065 Redbrook Emergency Exit Box



## Contents

- [1 Important Safety Instructions](#)
- [2 BOX CONTENTS](#)
- [3 TOOLS REQUIRED](#)
- [4 INSTALLATION INSTRUCTIONS](#)
- [5 DISPOSAL](#)
- [6 REDBROOK EMERGENCY EXIT BOX DIMENSIONS](#)
- [7 WARRANTY](#)
- [8 PRODUCT TEMP SPECIFICATION](#)
- [9 Technical Helpline](#)
- [10 Documents / Resources](#)
  - [10.1 References](#)
- [11 Related Posts](#)

## Important Safety Instructions



**READ THESE INSTRUCTIONS THOROUGHLY  
BEFORE INSTALLATION KEEP THESE INSTRUCTIONS FOR FUTURE REFERENCE.**

### IMPORTANT:

This product must be installed by a qualified electrician or competent person, and in accordance with current building and IET wiring regulations.

### PLEASE READ THESE INSTRUCTIONS BEFORE INSTALLATION.



**WARNING:** Risk of electric shock! Isolate the mains power before proceeding.

- Turn off the mains power before performing inspections, installation, or removal
- Verify that the supply voltage is correct by comparing it with the luminaire label information
- It is the installers responsibility to ensure installation is suitable for the total load of the luminaire(s). The supply cable, fuses/circuit breakers must be correctly rated for the electrical load and considering for any transient inrush currents that may occur
- Do not perform insulation strength or resistance tests on installed luminaire(s) connected

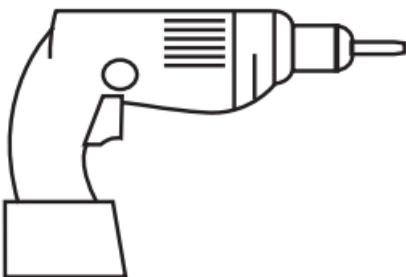
### BOX CONTENTS

This lighting fixture has been properly packed to avoid damage during transit. Before commencing with the installation carefully inspect the luminaire to confirm there is no damage. **DO NOT INSTALL** if any damage has occurred to the fixture or any of its components.

- Light Fitting
- Instruction Manual
- Fixing Kit

### TOOLS REQUIRED

- Drill



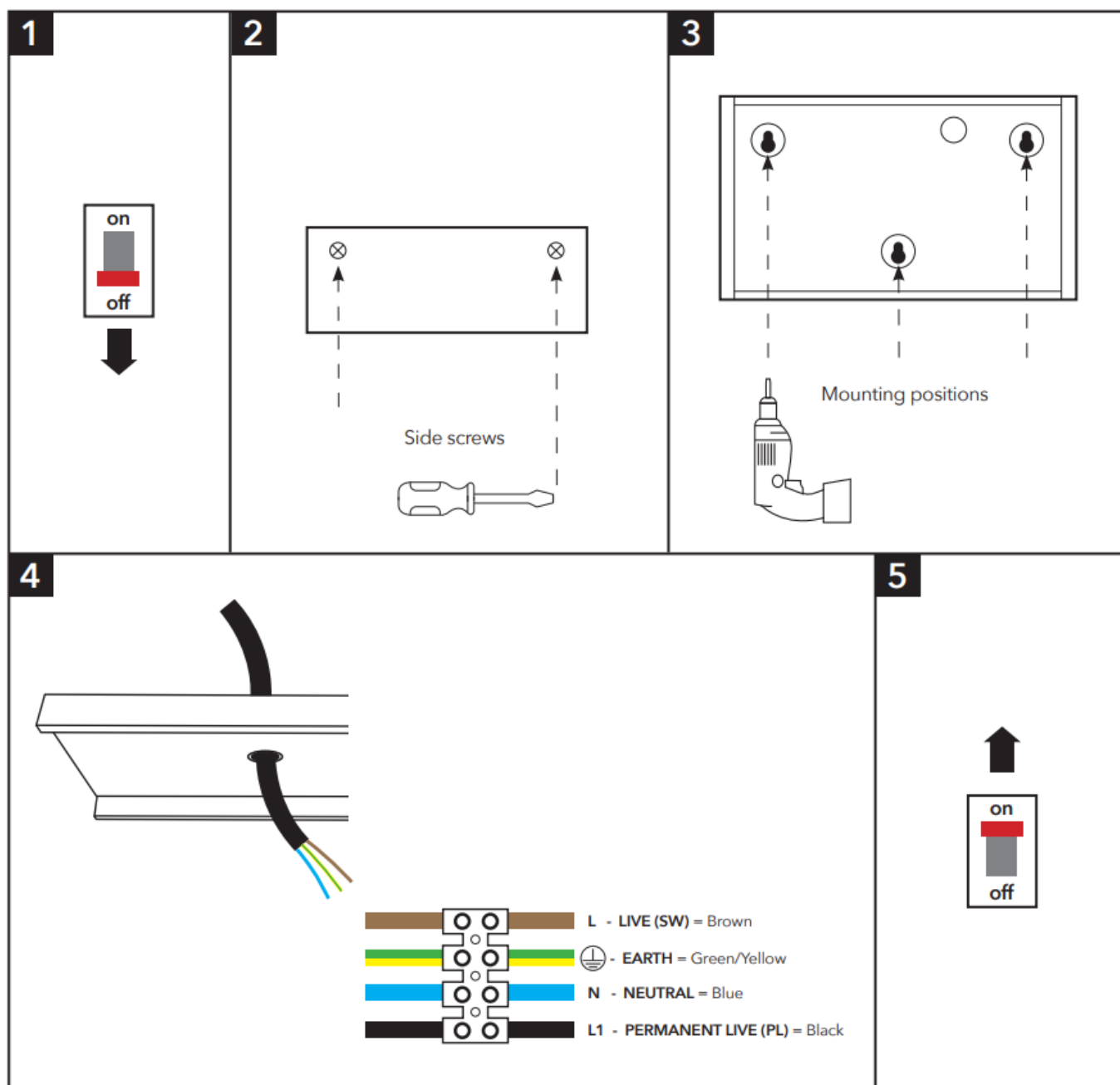
- Screwdriver



- Cable



## INSTALLATION INSTRUCTIONS



1. Isolate mains supply
2. Unscrew side panel and remove legend screen
3. Place housing to wall and mark mounting positions and fix using adequate wall plugs and screws as shown

4. Feed mains input cable through knockout you desire as show
5. Power on mains supply when deemed safe

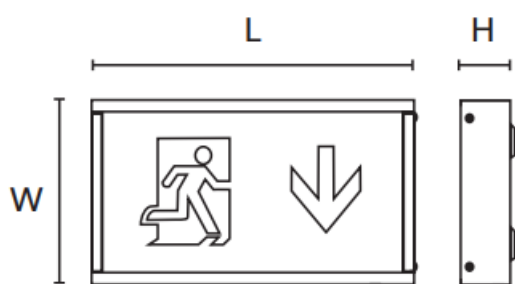
## DISPOSAL

Disassemble instructions for end of life disposal available on website.

Disposal of Electronic Equipment WEEE Directive 2002/96/EC This product falls within the scope of the Waste Electrical & Electronic Equipment Directive (WEEE), which means the product should not be disposed of as normal household waste. Please recycle where facilities exist or check with your Local Authority. RoHS – All components and materials used in this product are RoHS 2002/95/EC compliant.

Specifications may change from time to time. The information contained in this leaflet is for guidance only and should not be considered as always accurate and should be treated as not representative.

## REDBROOK EMERGENCY EXIT BOX DIMENSIONS



Part No. Description	Watts	L (mm)	W (mm)	H (mm)	Weight
421065 Redbrook Emergency Exit Box	5W	390	190	60	0.92Kg

Installation Engineers Contact Details:		Luminaire Reference / Location
Name:	Tel:	

ROUTINE TEST RECORD										
Type Test	Year 1		Year 2		Year 3		Year 4		Year 5	
	Signed	Date	Signed	Date	Signed	Date	Signed	Date	Signed	Date
Functional 1										
Functional 2										
Functional 3										
Functional 4										
Functional 5										
Functional 6										
Functional 7										
Functional 8										
Functional 9										
Functional 10										
Functional 11										
3hr Duration 12										

### **Wiring instructions for units equipped an with EMERGENCY function**

Emergency lighting luminaries must be installed and maintained in accordance with the emergency lighting standard BS 5266-1

1. Connect incoming earth cable to 'Earth' terminal on connector block.
2. Connect incoming neutral cable to 'Neutral' terminal on connector block.
3. For the emergency unit to work correctly, please ensure that an uninterrupted permanent live feed is present and is connected directly to the 'Permanent Live' terminal of the mains terminal block. Please ensure there are no switches, PIRs etc within the permanent live feed, constant switching of the emergency pack could result in premature battery failure.
4. Connect incoming switched live cable to the terminal marked "Switched Live"  
NOTE: If there is no switch live feed and the unit has a microwave sensor, simply bridge across from the "Permanent Live" to the Switch Live" on the mains terminal block.
5. There should be a loose flying lead connected to the battery. This needs to be attached to the flying lead from the emergency control unit.
6. Following power up the green LED indicator should illuminate to indicate charging. If power to the unit is disrupted or isolated, the unit indicating green LED will switch off, triggering the emergency LEDs to illuminate.
7. Please allow 24 hours charge before first emergency test.

### **WARRANTY**

This luminaire is warranted for a period of 5 years from the date of purchase\*\*. The backup battery pack in the

emergency version is warranted for a period of 24 months. The warranty could be invalidated should the light fitting not be installed according to these instructions, outside the scope of the specification or the product has been altered or tampered with in any way. Please see website for terms and conditions.

## PRODUCT TEMP SPECIFICATION

Emergency 0° to +30°C

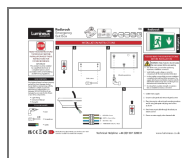
This product contains a light source of energy efficiency Class G

## Technical Helpline

+44 (0)1507 328031



## Documents / Resources



[Lumineux 421065 Redbrook Emergency Exit Box](#) [pdf] Instruction Manual  
421065 Redbrook Emergency Exit Box, 421065, Redbrook Emergency Exit Box, Emergency Exit Box, Exit Box, Box

## References

- [LED Floodlight manufacturer](#) | [Flood light suppliers](#) | [Industrial](#) | [Linear](#) | [Recessed](#) | [Emergency](#) | [Exterior](#) | [Sports Lighting](#)