



LUMINES CLARO Series Linear LED Luminaire Instruction Manual

[Home](#) » [LUMINES](#) » LUMINES CLARO Series Linear LED Luminaire Instruction Manual 

LUMINES CLARO Series Linear LED Luminaire



Contents

- [1 Use](#)
- [2 Warning](#)
- [3 The warranty does not cover](#)
- [4 Maintenance](#)
- [5 IN THE PACKAGE](#)
- [6 NECESSARY TOOLS](#)
- [7 ASSEMBLY INSTRUCTIONS](#)
 - [7.1 LET'S START](#)
- [8 Documents / Resources](#)
 - [8.1 References](#)
- [9 Related Posts](#)

Use

Integrated luminaires LUMINES are ideal for arranging in any interior. Reliable SAMSUNG LEDs in combination with perfectly matched LUMINES LED profiles create timeless linear lighting that can be used both for main and decorative lighting inside the building.

Warning

Installation should be performed by a person with appropriate qualifications. Stay careful during the installation process.

All actions related to repair, maintenance or adjustment should be carried out with the disconnected power (the power supply should be disconnected at least 10 minutes before the planned works).

The light source of this luminaire is not replaceable; when the light source is worn out, the entire lighting fitting must be replaced.

Caution! This product is not a toy! To avoid the danger of suffocation keep the bag and the product away from the babies and children!

The assembly of this product should be carried out in accordance with the presented diagram – drawing.

The lighting fixture should not be installed in the nearness of flammable materials. It is forbidden to interfere with the lighting fixture and to make any technical modifications to the fixture. Any changes involve the risk of transferring full responsibility to the person making the changes.

Failure to follow the instructions may result in burns, fire, electric shock, personal injury, or material and non-material damage.

The power cord of the lighting fixture cannot be replaced.

The lighting fixture must not be used or stored in a corrosive environment.

The device made in "Class I" protection must be connected to the grounding installation (3-wire installation).

The following wires are used in LUMINES lighting fixtures:

- OMY cable 3×0.75
- H05V-U cable

The warranty does not cover

Defects caused by installing the device contrary to the instructions.

Defects and damage resulting from natural wear and contrary to the intended use.

As a result of mechanical damage and as a result of overvoltage's from the mains.

Maintenance

The lighting fitting should be cleaned with a clean, dry and soft cloth. Do not use caustic agents or solvents.

		Useful luminous flux*	Color temperature	Beam angle	Type of power supply	Lifespan	Power	CRI	UG R 4 h 8 h	On/Off time	PF	IP rating	Weight	Dimensions
CLARO 60	WHITE	2680 lm	4000 K	100°	220-240 V AC 50-60 Hz	54000 h	27 W	>80 CRI	28,8	25000	>0,9	IP20	1,4 kg	613×43×73 mm
	SILVER	2430 lm	3900 K	100°	220-240 V AC 50-60 Hz	54000 h	27 W	>80 CRI	28,7	25000	>0,9	IP20	1,4 kg	613×43×73 mm
CLARO 120	WHITE	5400 lm	4000 K	100°	220-240 V AC 50-60 Hz	54000 h	54 W	>80 CRI	28,9	25000	>0,9	IP20	2,1 kg	1213×43×73 mm
	SILVER	4920 lm	3900 K	100°	220-240 V AC 50-60 Hz	54000 h	54 W	>80 CRI	28,8	25000	>0,9	IP20	2,1 kg	1213×43×73 mm
CLARO 180	WHITE	8100 lm	4000 K	100°	220-240 V AC 50-60 Hz	54000 h	80 W	>80 CRI	28,9	25000	>0,9	IP20	2,9 kg	1813×43×73 mm
	SILVER	7980 lm	3900 K	100°	220-240 V AC 50-60 Hz	54000 h	80 W	>80 CRI	28,8	25000	>0,9	IP20	2,9 kg	1813×43×73 mm



Replace any broken protective screen.



The lamp is not dimmable



Do not look at the working light source for a long time



The minimum distance from the illuminated object is 0.5 m



Warning: risk of electric shock



Requires grounding.



Do not cover luminaire with thermal insulation materials.



Note! It is forbidden to assemble the lamp under voltage.



The product meets the requirements of Regulation 2012/19/UE.

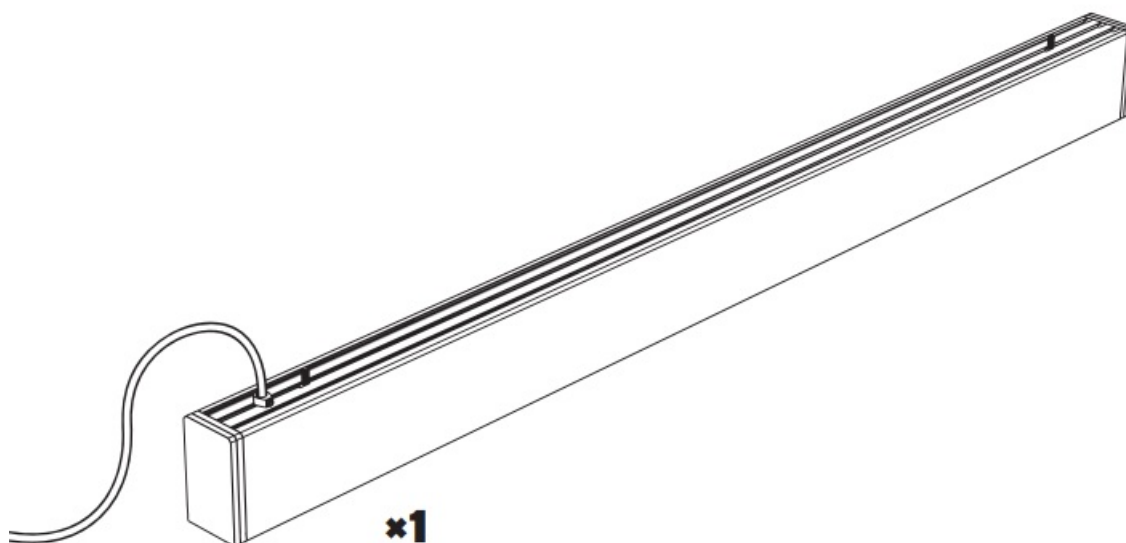
The symbol of the crossed out trash can on the device means that the product marked with it may not be thrown out with other household waste. After use, the product should be taken to a collection point for waste electrical and electronic equipment or returned to the retailer. Appropriate segregation of the material for later treatment, recovery or destruction helps to avoid negative effects on the environment and health, and enables the recovery of raw materials from which the product was made.

For details on available collection points, please contact your local sanitation service or the store where you purchased the product.



IN THE PACKAGE

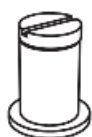
- LED lamp



- Lifts



- Nipple



x1

- Screws



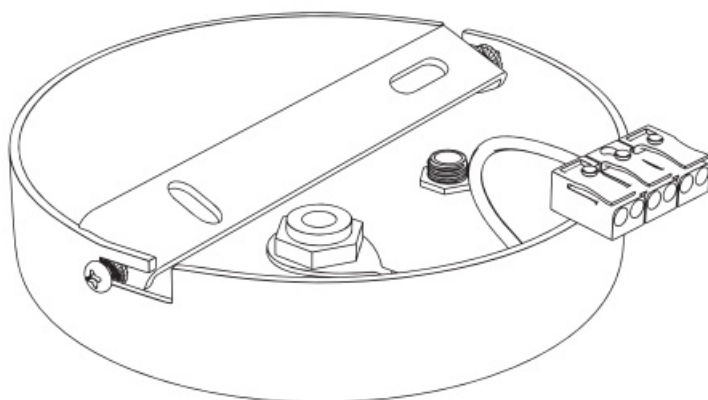
×3

- Holders



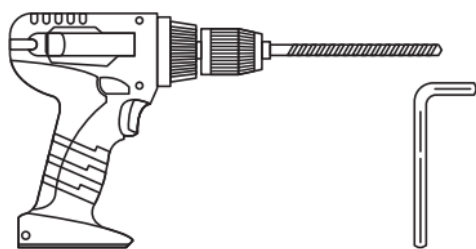
×7

- Headliner



×1

NECESSARY TOOLS



Screwgun or drill
with a concrete drill bit

Allen key size 4



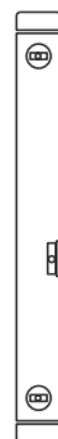
Pencil



Pliers



Cross
screwdriver



Spirit level

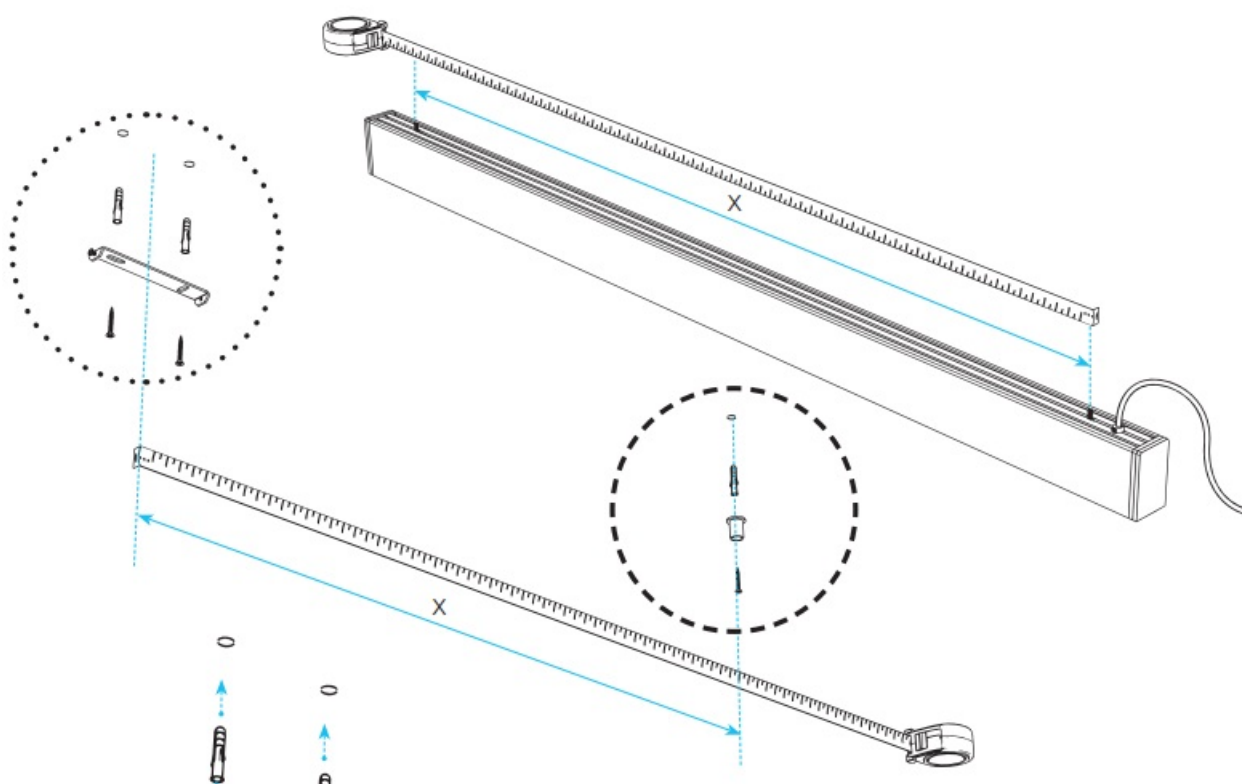


Measure

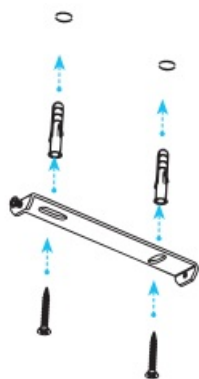
ASSEMBLY INSTRUCTIONS

LET'S START

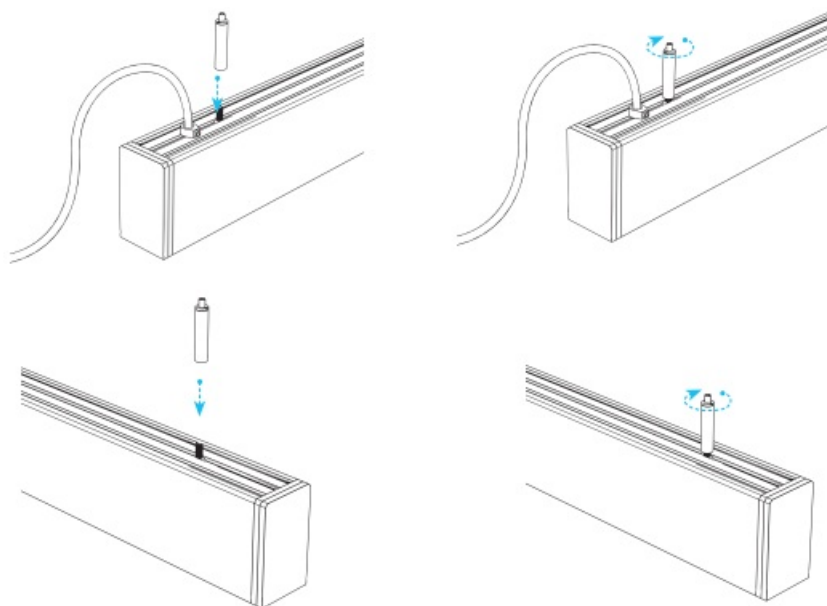
1. On the ceiling, mark the place to assemble the headliner, drill the holes and then assemble the flanges for the mounting pins in them.



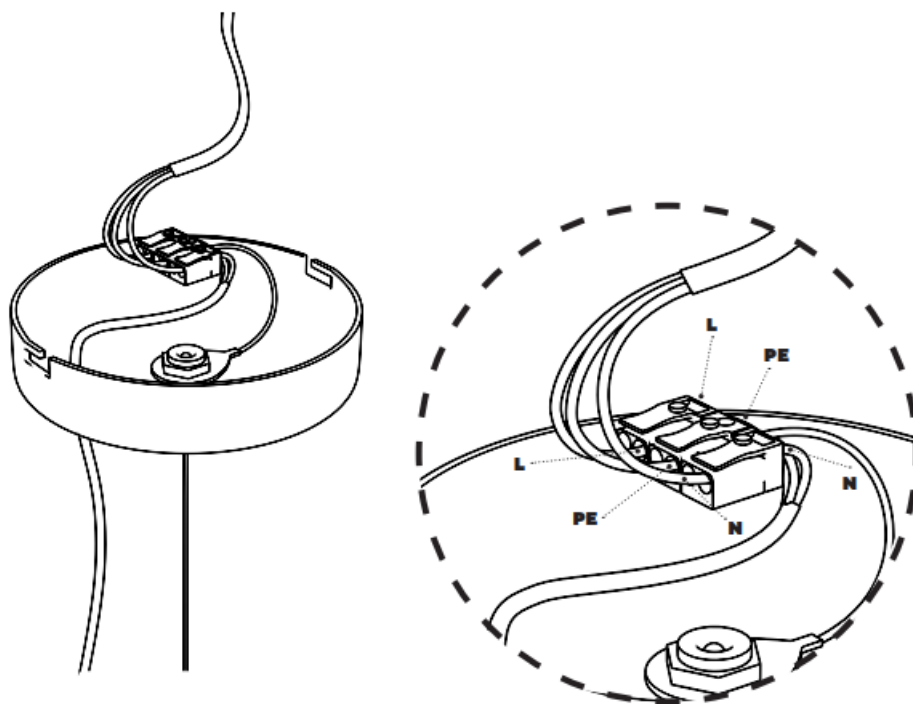
2. Screw the assembly bracket in place of the holes with screws.



3. Attach rope locks to the protruding screws on the back of the profile



4. Attach the cube to the wires protruding from the ceiling (L – phase, N – neutral, PE – protective)

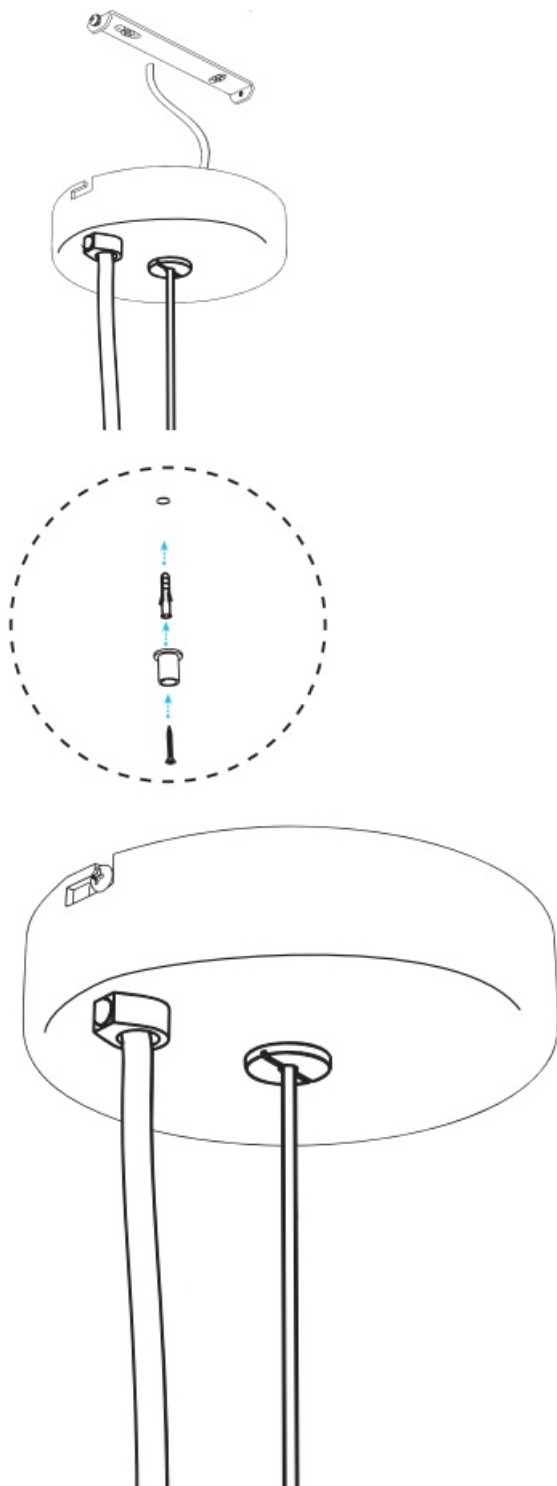


NOTE!

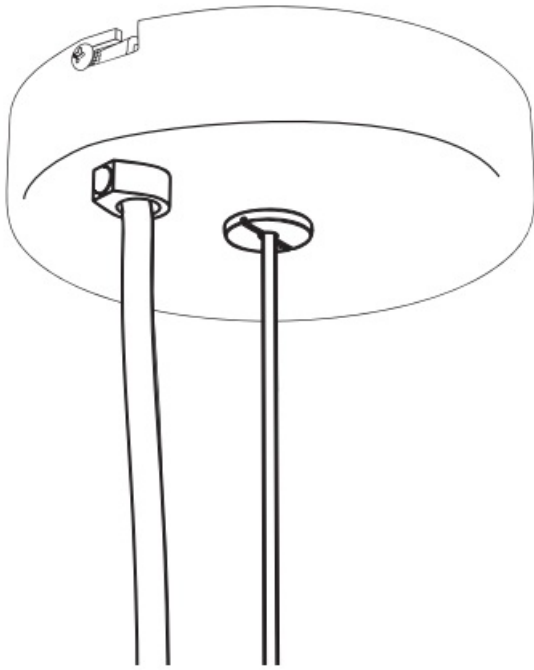
Risk of electric shock! Before assembly, make sure that the power is disconnected and the cables are de-energized!

5. Put the headliner on the assembly element so that the screws with washers protrude outside and gently turn

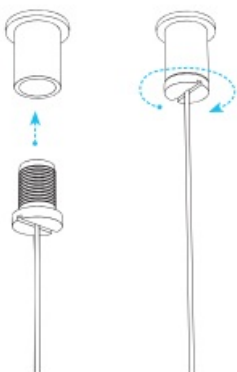
them, then tighten the screws.



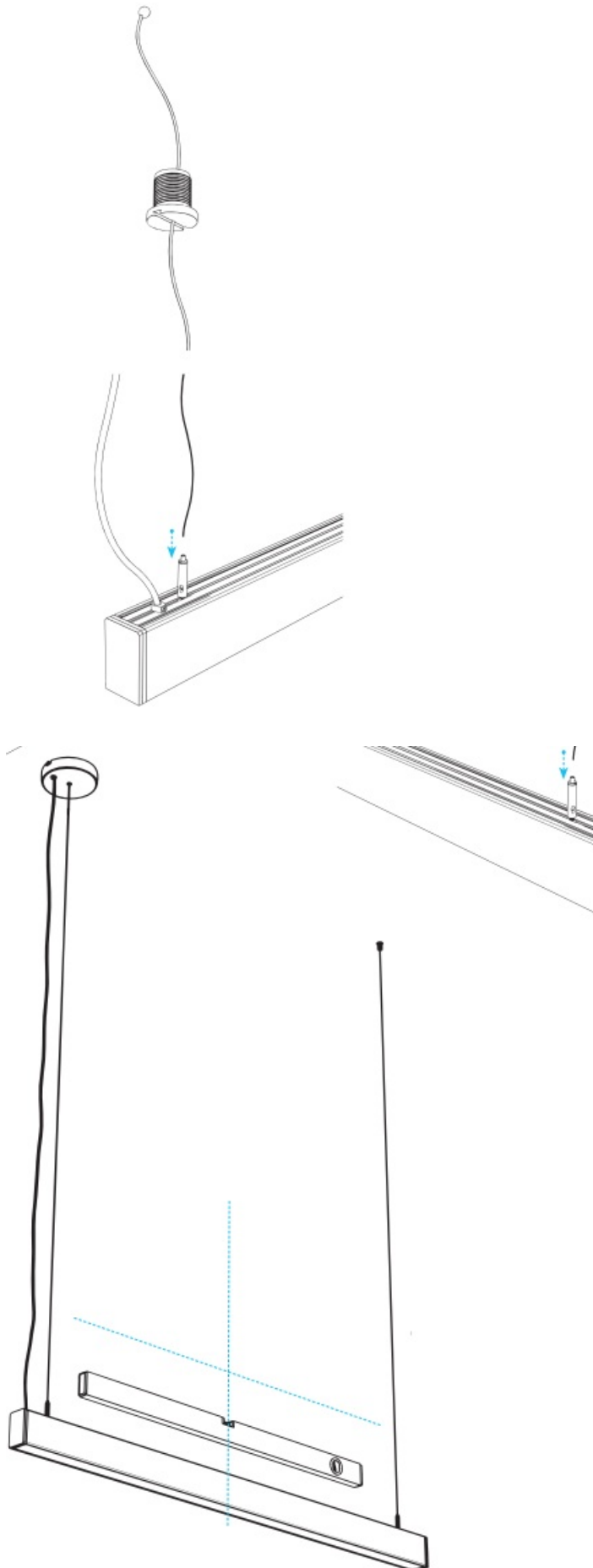
6. Screw the ceiling mount at a distance X from the middle of the headliner.

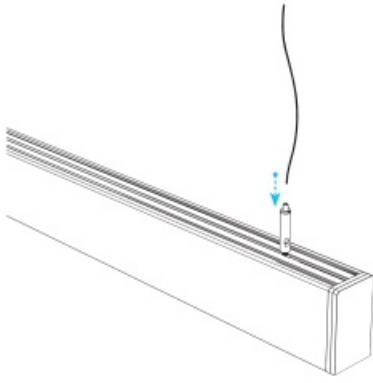


7. Put the rope with the ball through the nipple and screw it into the ceiling holder.

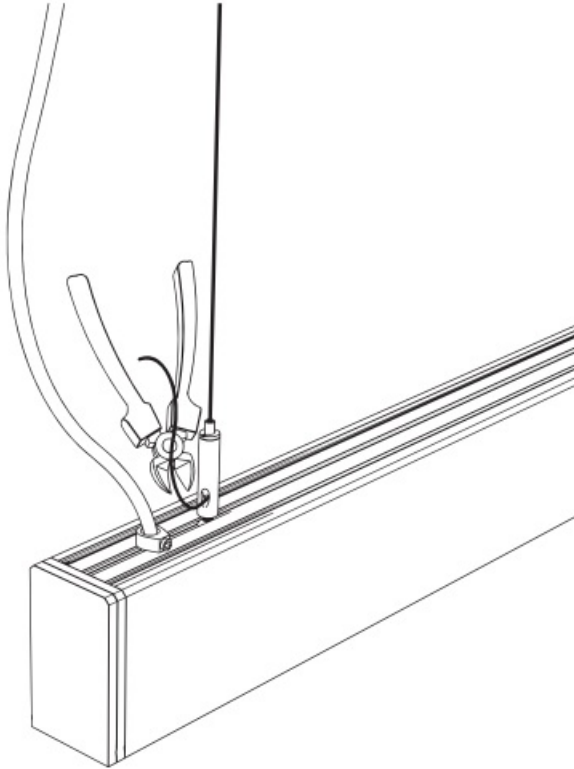


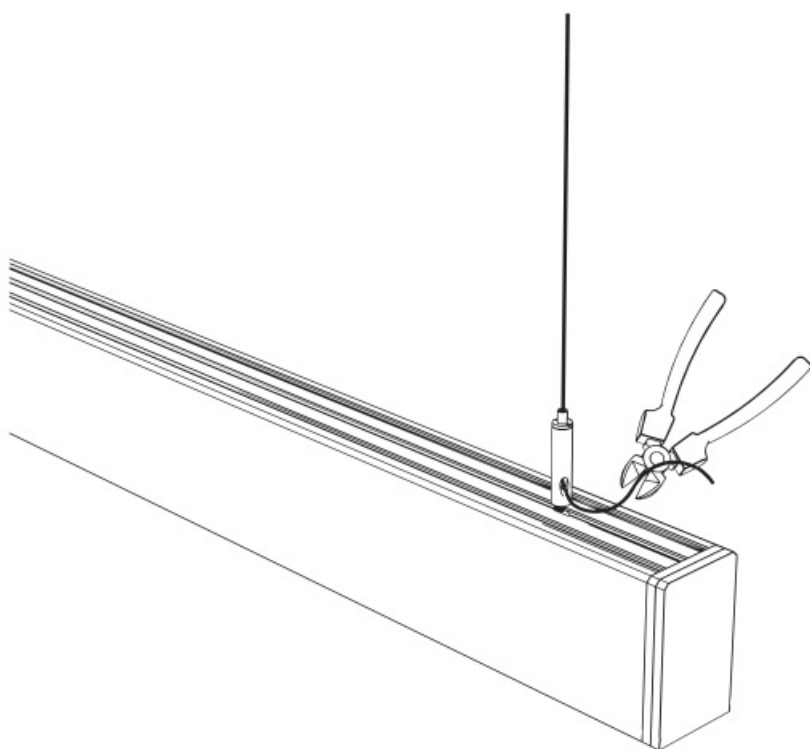
8. Insert the cables into the locks located on the back of the profile and set them to the appropriate width and then adjust them to the appropriate height.



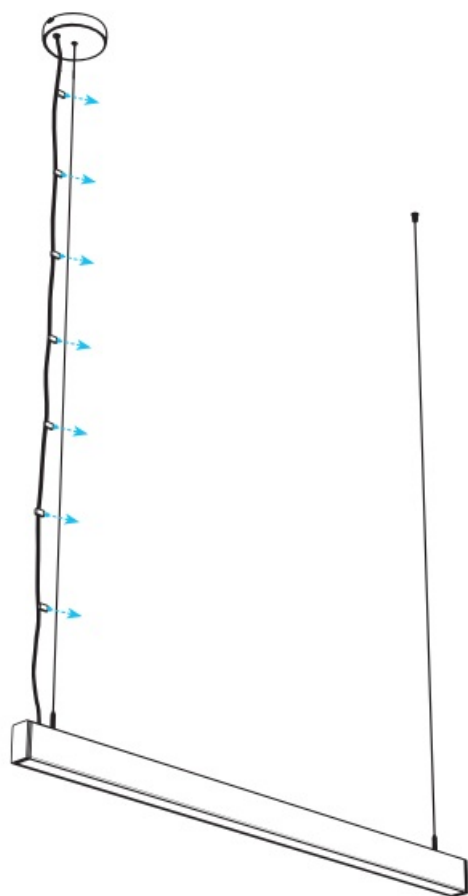


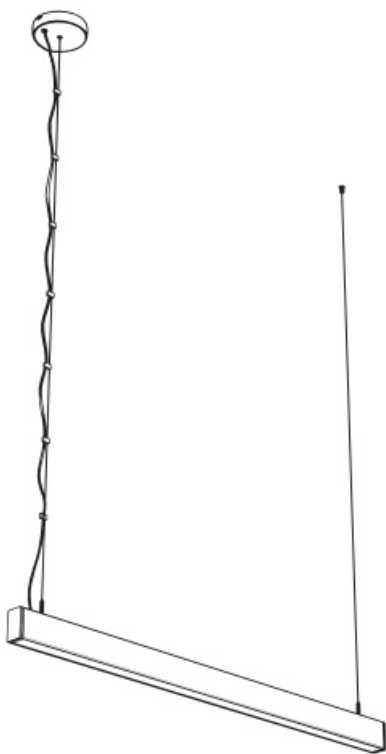
9. Level the lamp





10. Cut off any excess lines





Thank you for choosing the CLARO LED luminaire Dziękujemy za wybór oprawy LED CLARO Vielen Dank, dass Sie sich für die CLARO LED-Leuchte entschieden haben

Made in Poland:

LED Labs Sp. z o.o.

Zakopiańska 2C

30-418 Kraków, Poland

www.lumines.pl



The costs of waste management can be found:

www.led-labs.pl

LUMINES[®]
LIGHTING

CLARO
by **LUMINES**[®]
LIGHTING

Documents / Resources



[LUMINES CLARO Series Linear LED Luminaire](#) [pdf] Instruction Manual
CLARO Series, Linear LED Luminaire, CLARO Series Linear LED Luminaire, LED Luminaire, Luminaire, CLARO 60, CLARO 120, CLARO 180

References

- [LED Oświetlenie LED ★ LED – LABS](#)
- [Profile LED | profil LED slim, profil do taśm LED | profile LUMINES](#)