



[Home](#) » [LUMIAS](#) » **LUMIAS HDL-200M Negative Ionic Hair Dryer User Manual** 



Contents [[hide](#)]

- [1 LUMIAS HDL-200M Negative Ionic Hair Dryer User Manual](#)
- [2 PRODUCT FEATURES](#)
- [3 USING YOUR ATTACHMENTS](#)
- [4 REGULAR FILTER MAINTENANCE](#)
- [5 TROUBLESHOOTING](#)
- [6 RETURN POLICY](#)
- [7 WARRANTY](#)
- [8 SPECIFICATION](#)
- [9 Documents / Resources](#)
 - [9.1 References](#)

LUMIAS HDL-200M Negative Ionic Hair Dryer User Manual



CAUTION

Important safety instructions

Read all instructions before use. When using an electrical appliance, basic precautions should always be followed, including the following. The attachment of the nozzle is magnetic. Please stay away from pacemakers, defibrillators, credit cards and electronic storage media to reduce the risk of fire, electric shock and injury.

WARNING

These warnings apply to the appliance, and also where applicable, to all tools, accessories, chargers or mains adaptors.

To reduce the risk of fire, electric shock, or injury:

1. This hair dryer can be used by children aged from 8 years and above and persons with reduced physical, sensory or reasoning capabilities, or lack of experience and knowledge, only if they have been given supervision or instruction by a responsible person concerning use of the appliance in a safe way and understand the hazards

involved.

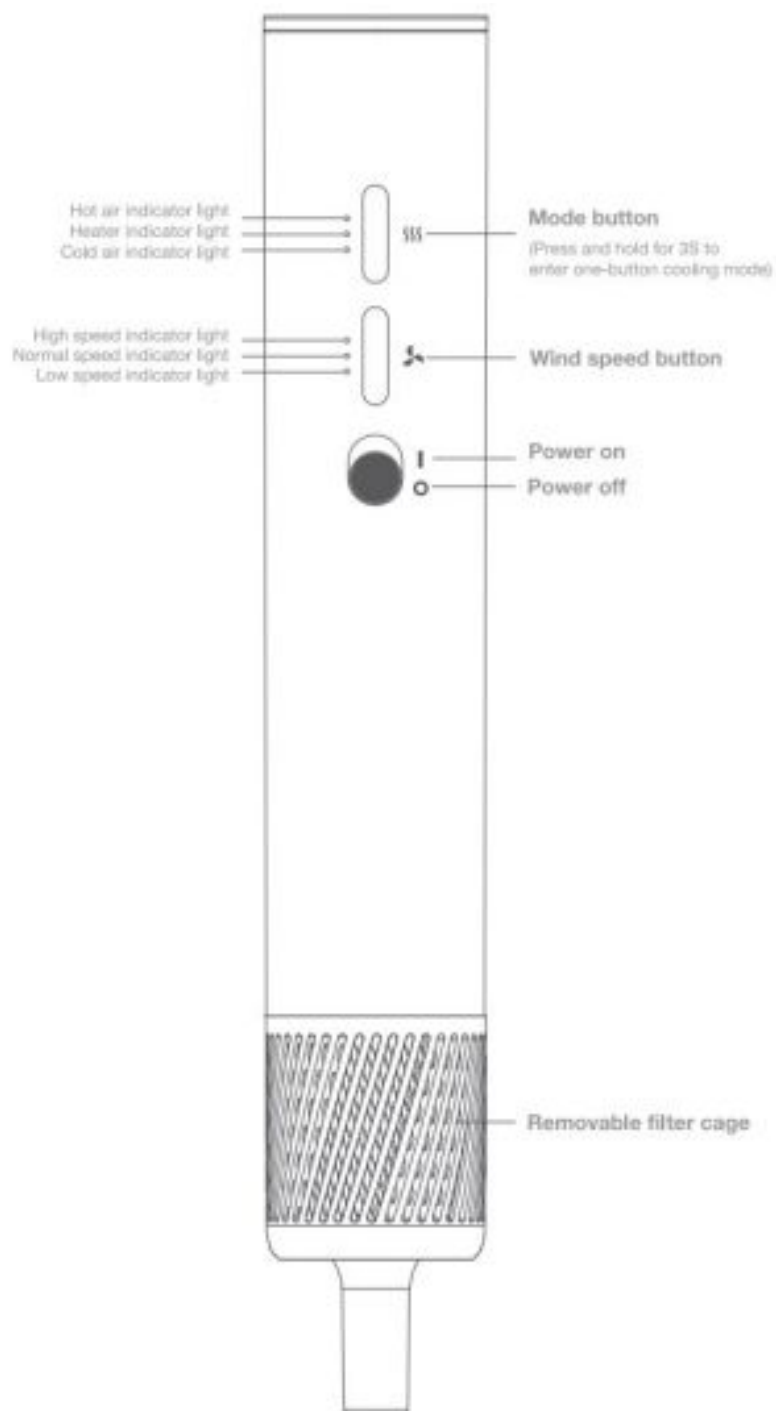
Cleaning and user maintenance shall not be made by children without supervision.

2. Do not allow to be used as a toy. Close attention is necessary when used by or near children. Children should be supervised to ensure that they do not play with the appliance.
3. If the appliance is used in a bathroom, unplug after use. The proximity of water presents a hazard even when the appliance is switched off.
4. Do not use this appliance near bathtubs, showers, basins or other vessels containing water.
5. If the supply cord is damaged, it must be replaced or repaired by the manufacturer, its service agent or similarly qualified persons in order to avoid a hazard.
6. This appliance has a non-self resetting thermal cut-out safety device to prevent overheating. If your appliance cuts out, unplug it from the mains supply socket and leave to cool.
7. In order to avoid a hazard due to inadvertent resetting of the thermal cut-out, this appliance must not be supplied through an external switching device, such as a timer, or connected to a circuit that is regularly switched on and off by the utility company, or plugged into any socket where the electrical supply is unstable or likely to be turned off.
8. For additional protection, the installation of a residual current device (RCD) having a rated residual operating current not exceeding 30mA is advisable. Ask your dealer for advice.
9. Do not use the appliance for any other purpose than drying hair.
10. Do not handle any part of the plug or appliance with wet hands.
11. Do not unplug by pulling on the cable or stretch or pull the cable when in use. Do not use an extension lead and do not wrap the cable around the appliance.
12. Do not use any lubricants, cleaning agents, polishes or air fresheners on any part of the appliance.
13. Contact the dealer when a service or repair is required. Do not disassemble the appliance as incorrect reassembly may result in an electric shock or fire.
14. If the appliance is not working as it should, if it has received a sharp blow, if it has been dropped, damaged, left outdoors, or dropped into water, do not use and contact the dealer.



WARNING: Do not use this appliance near bathtubs, showers, basins or other vessels containing water.

PRODUCT FEATURES

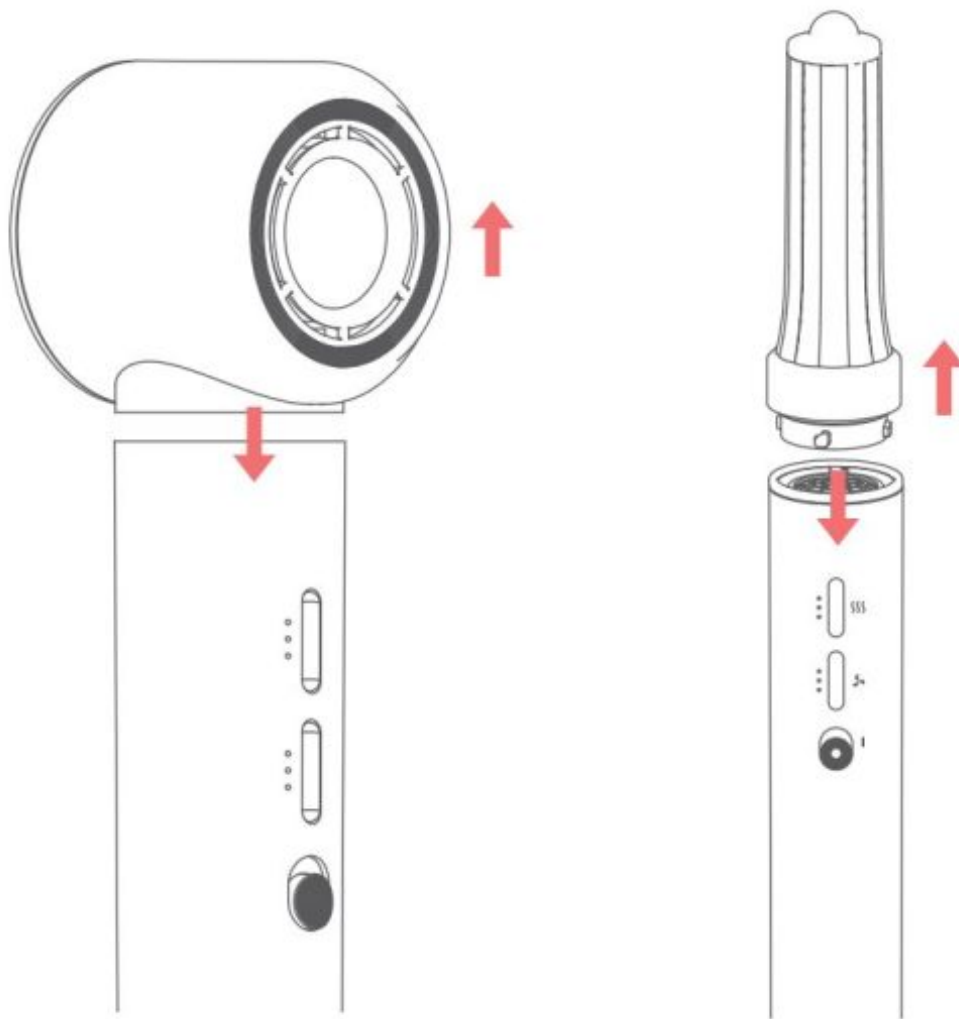


Caution: To avoid hazard, please do not use the hair dryer without the filter cage attached.

USING YOUR ATTACHMENTS

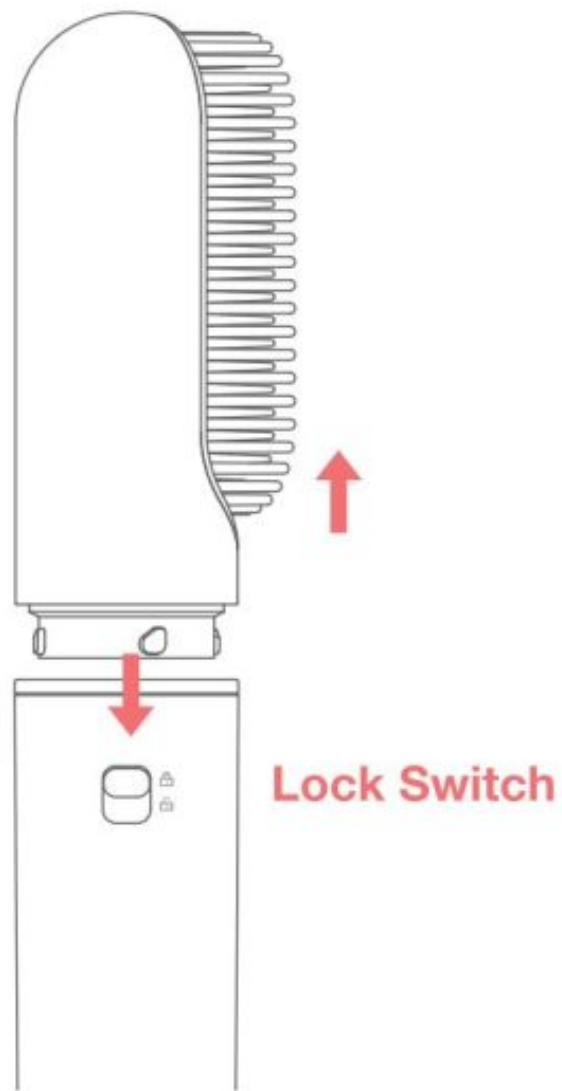
Connect the attachments

Put the attachments into the main unit until it is locked tightly.

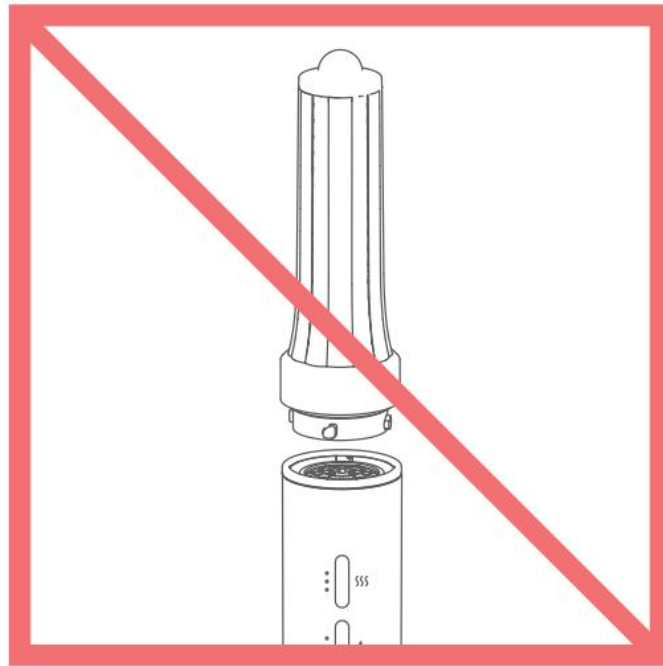


Change the attachments

Please press the Lock Switch to release the attachment. If you want to change different attachments.



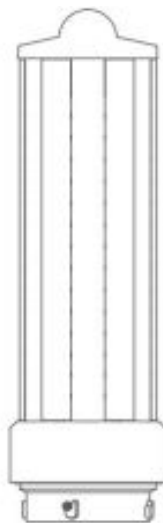
Caution: The attachments will become hot during use, please be careful.



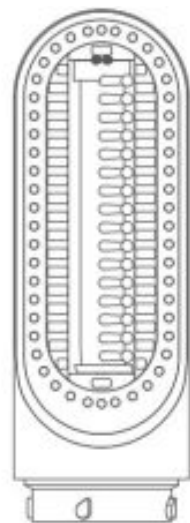
ATTACHMENTS INCLUDED



Small Wave Curl Attachment



Large Wave Curl Attachment



Straightening Comb



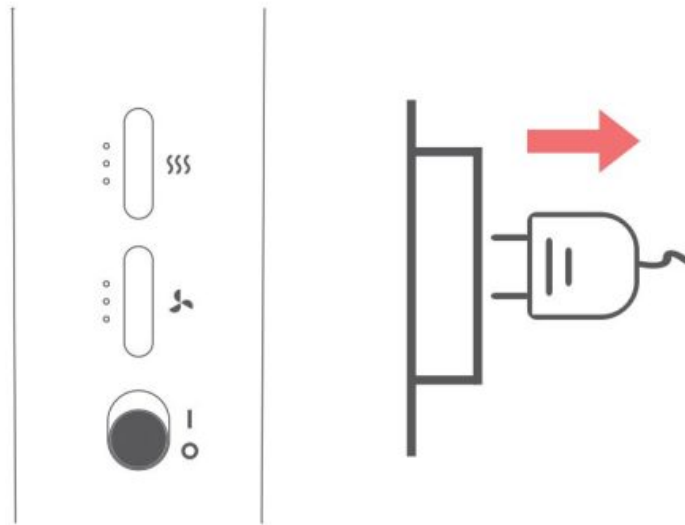
Styling Concentrator Nozzle



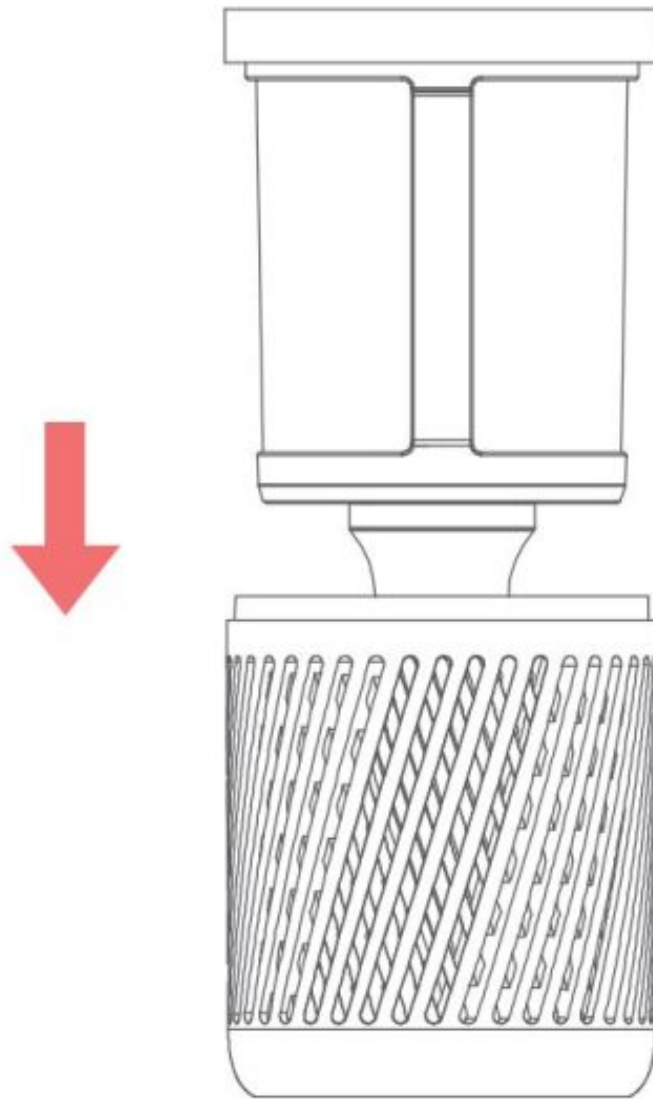
High-Speed Drying Nozzle

REGULAR FILTER MAINTENANCE

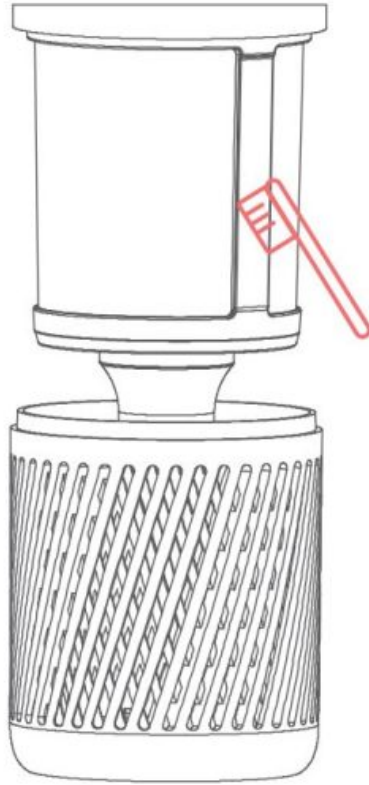
The filter need to be cleaned periodically to avoid any blocking and make sure the air Inlet smoothly. Ensure that you unplug your appliance from the mains electricity supply and allow to cool down before cleaning your filter.



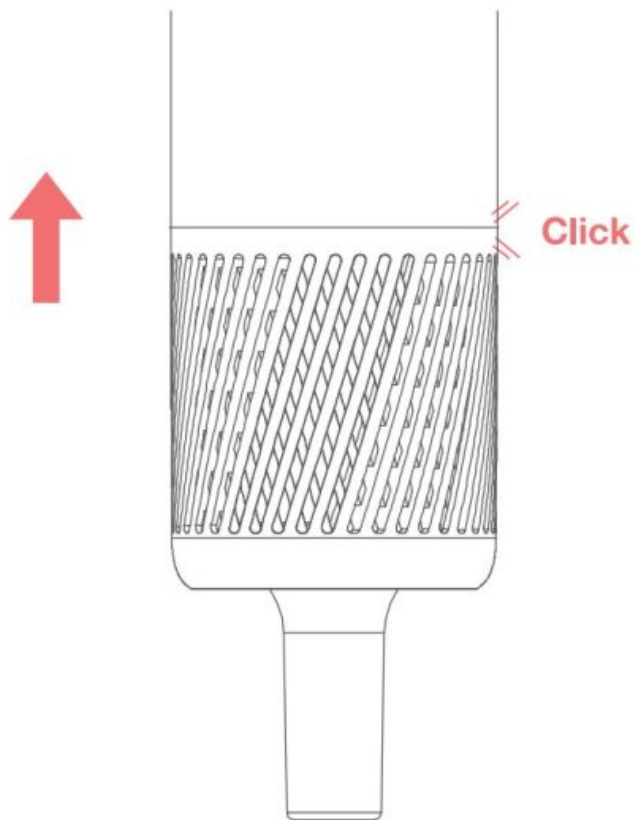
The filter cage is attached to the unit by magnetic method. Hold the handle and unplug the filter cage downward then remove it from the handle.



Do not clean the inside stainless steel filter by water, or it may cause the unit malfunction. Please use dry lint free cloth, soft brush or toothbrush to clear the dust or other attachments on the surface of filter cage and stainless steel filter.



After cleaning, put back the filter cage to the handle, you will hear a click voice which means the filter cage is assembled well.



TROUBLESHOOTING

If your hair dryer is not working properly, please perform the following checks before requesting repair service.

Malfunctions	Cause Analysis	Solutions
No power on No light indication	Not connected to the power supply	Check that the power outlet has good contact
	Power switch not energized	Turn the power switch on and off.
	Abnormal input voltage	Ensure that the voltage used is the same as that indicated on the product nameplate.
	Damage to internal circuit board components	Please contact after-sales customer service
LED lights do not light up	LED circuit board failure	Please contact after-sales customer service
No response when pressing the button	Damaged keypad	
Reddening of the heating wire	Damaged motor or control board damage	
Power cord or plug is overheated	Damaged power cord	

Note: After the above treatment, the hair dryer still can not work properly, please feel free to contact us!

RETURN POLICY

We offer 30 days unconditional return service. Within 30 days since the date of purchase, you can contact us to return your hair dryer and to be refunded.

To be eligible for a refund, you must:

- Return the hair dryer with all accessories and gifts.
- Return them in their original packaging.
- Provide valid proof of purchase.
- Ensure the hair dryer and accessories are resalable.

Return & shipping cost:

- Returns for reason of product quality issue, We will carry the shipping costs.
- Returns for any reason other than product quality issue, the buyer should carry the shipping costs.
- Returns for any reason other than product quality issue, buyers should assume responsibility for any damage or loss incurred in transport.

WARRANTY

One-year guarantee

In 1 year since the date of purchase, if your hair dryer cannot work due to the defects of materials or workmanship, we will repair or replace it for you.

Following situations are not covered:

- a. Failure to present the proof of purchase (invoice or receipt).
- b. Repairs exceeding the warranty coverage.
- c. Damage caused by disassembly or remodeling.
- d. Damage caused by misuse or man-made damage.
- e. Failure or damage caused by non-general household use (e.g., prolonged use in a

harsh environment); or natural staining due to normal use.

SPECIFICATION

Product	Lumias Negative Ionic Hair Dryer
Model	HDL-200M
Rated Voltage	220V~
Rated Frequency	50Hz
Rated Power	1300W
Net Weight	380g
Product Size	305 × 57 × 65mm

Correct Disposal of this product



■ This marking indicates that this product should not be disposed with other household wastes throughout the EU.

To prevent possible harm to the environment or human health from uncontrolled waste disposal, recycle it responsibly to promote the sustainable reuse of material resources. To return your used device, please use the return and collection systems or contact the retailer where the product was purchased. They can take this product for environmental safe recycling.

Read More About This Manual & Download PDF:

Documents / Resources



[LUMIAS HDL-200M Negative Ionic Hair Dryer \[pdf\]](#) User Manual
HDL-200M, HDL-200M Negative Ionic Hair Dryer, Negative Ionic Hair Dryer, Ionic Hair Dryer, Hair Dryer

References

- [User Manual](#)

📁 LUMIAS

💡 Hair Dryer, HDL-200M, HDL-200M Negative Ionic Hair Dryer, Ionic Hair Dryer, LUMIAS, Negative Ionic Hair Dryer

Leave a comment

Your email address will not be published. Required fields are marked *

Comment *

Name

Email

Website

☐ Save my name, email, and website in this browser for the next time I comment.

Post Comment

Search:

e.g. whirlpool wrf535swhz

Search

[Manuals+](#) | [Upload](#) | [Deep Search](#) | [Privacy Policy](#) | [@manuals.plus](#) | [YouTube](#)

This website is an independent publication and is neither affiliated with nor endorsed by any of the trademark owners. The "Bluetooth®" word mark and logos are registered trademarks owned by Bluetooth SIG, Inc. The "Wi-Fi®" word mark and logos are registered trademarks owned by the Wi-Fi Alliance. Any use of these marks on this website does not imply any affiliation with or endorsement.