

LUMI®
SP-POS-200 POS
Mounting
Solution Stand



LUMI SP-POS-200 POS Mounting Solution Stand Installation Guide

[Home](#) » [Lumi](#) » LUMI SP-POS-200 POS Mounting Solution Stand Installation Guide 

Contents

- [1 LUMI SP-POS-200 POS Mounting Solution Stand](#)
- [2 Specifications](#)
- [3 Product Usage Instructions](#)
- [4 FAQ](#)
- [5 Parts And Tools](#)
- [6 Overview](#)
- [7 Installation Instructions](#)
- [8 Documents / Resources](#)
 - [8.1 References](#)
- [9 Related Posts](#)



LUMI SP-POS-200 POS Mounting Solution Stand



Specifications

- **Model:** SP-POS-200
- **Item No:** 2987168
- **Includes:** Terminal, Drucker, Scanner, Kabelschelle (I)

Product Usage Instructions

Mounting Instructions

- Identify a suitable location for mounting the SP-POS-200.
- Adjust the Kabelschelle (I) as needed for secure cable management.
- Mount the terminal, drucker, and scanner securely in the designated positions.

The Kabelschelle (I) can be adjusted to organize and secure cables effectively. Ensure all cables are neatly arranged to avoid tangling or damage.

FAQ

- **Q:** How do I adjust the Kabelschelle (I)?
- **A:** To adjust the Kabelschelle (I), simply loosen the fastening mechanism, position it as needed, and tighten it securely to hold the cables in place.
- **Q:** Can the SP-POS-200 be mounted on any surface?
- **A:** The SP-POS-200 can be mounted on most surfaces, ensuring they are stable and capable of supporting the weight of the terminal, drucker, and scanner.

IMPORTANT

Failure to read, thoroughly understand, and follow all instructions can result in serious personal injury, damage to equipment, or voiding of factory warranty.

INSTRUCTIONS OF SAFETY AND WARNINGS

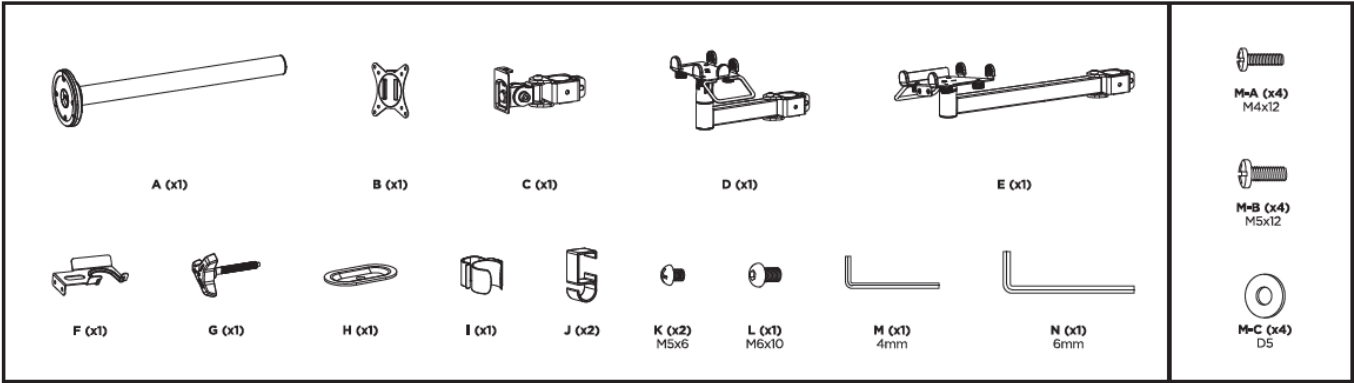
- Make sure that the mounting surface is strong enough to handle a mounted product and
- DO NOT EXCEED THE MAXIMUM LISTED WEIGHT CAPACITY.
- Always use an assistant or a mechanical lifting device to safely lift and position heavy products.
- Tighten screws firmly, but do not over-tighten. Over-tightening can cause product damage that greatly reduces the holding power.
- Keep a clear area and distance from moving parts when using the product.
- Use only as intended. Never stand, hang, or climb on the product.
- This product is intended for indoor use only.
- Any attempts to reconstruct the construction aren't allowed.
- This product may contain small items that could be a choking hazard if swallowed. Keep children away unless the product is intended for their use and all instructions and manuals are fully reviewed and understood by them.
- Check that the product is secure and safe to use at regular intervals (at least every three months).

Should you ever have any questions or feel you require help please contact your place of purchase for assistance.

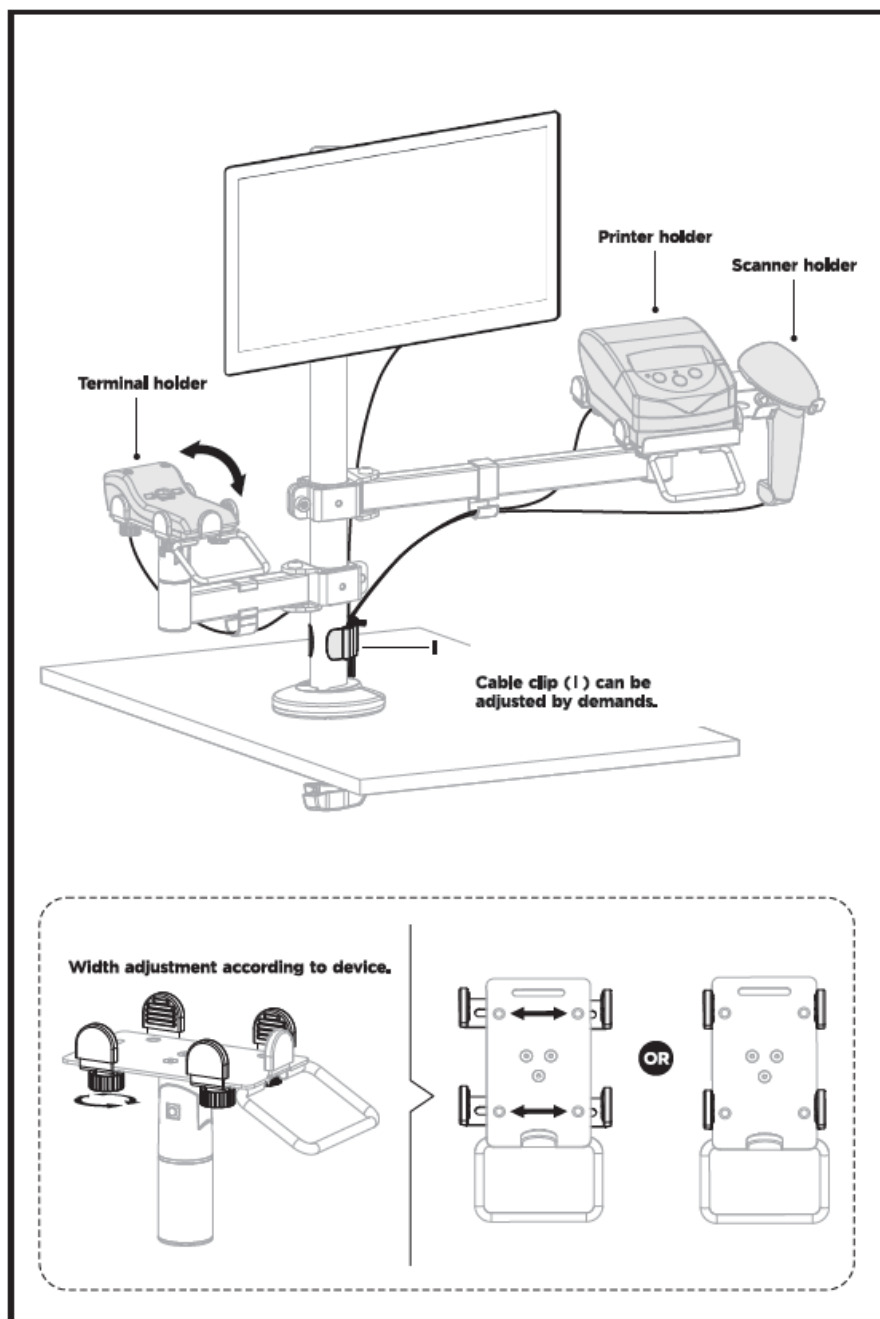
Features



Parts And Tools



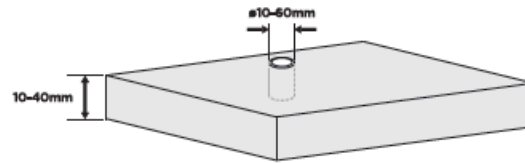
Overview



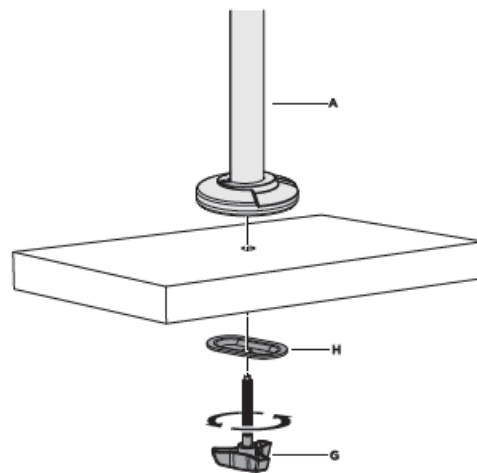
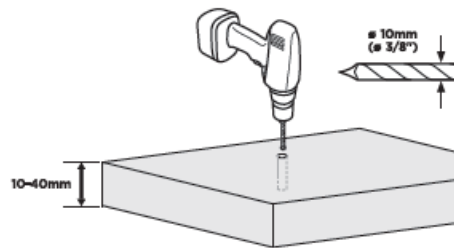
Installation Instructions

1

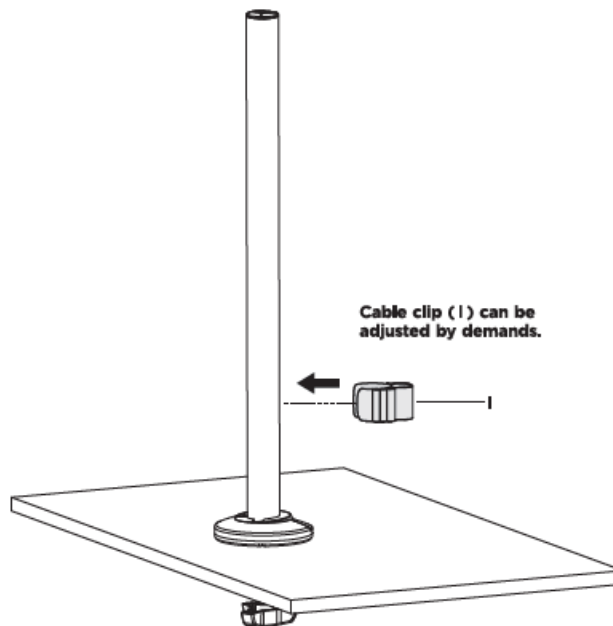
Desktop with Existing Through-Hole.



OR

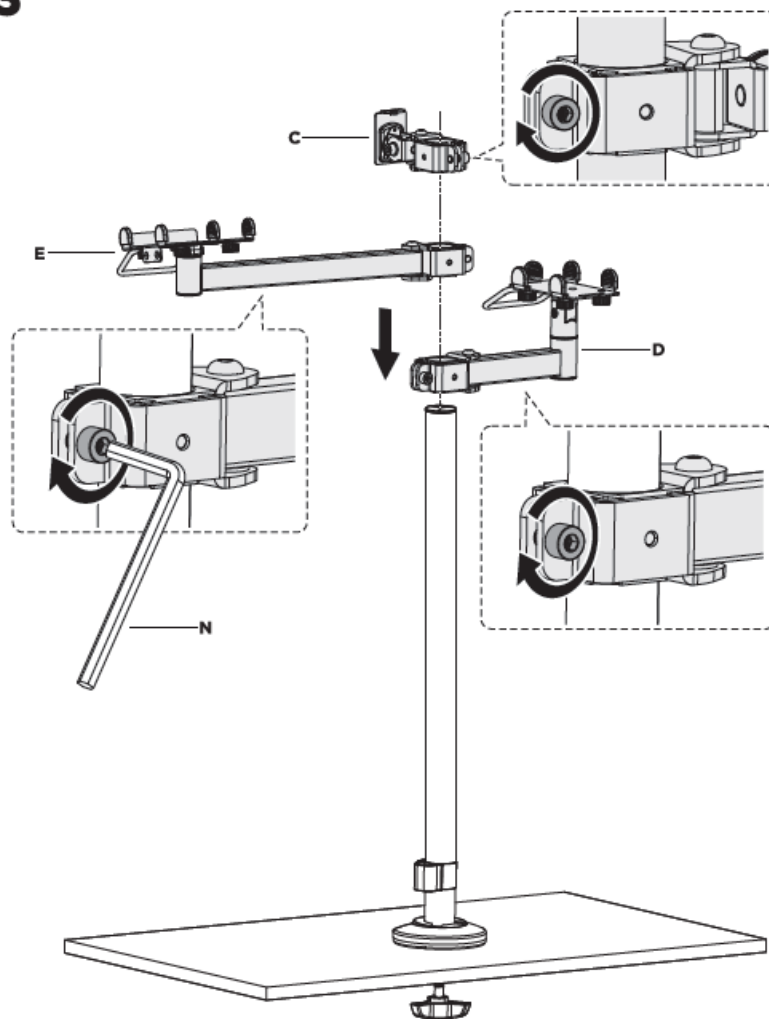


2

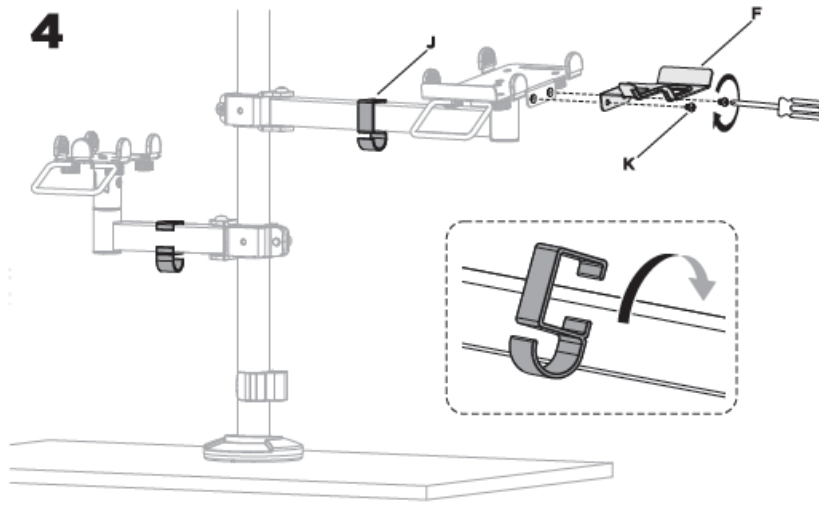


Cable clip (I) can be adjusted by demands.

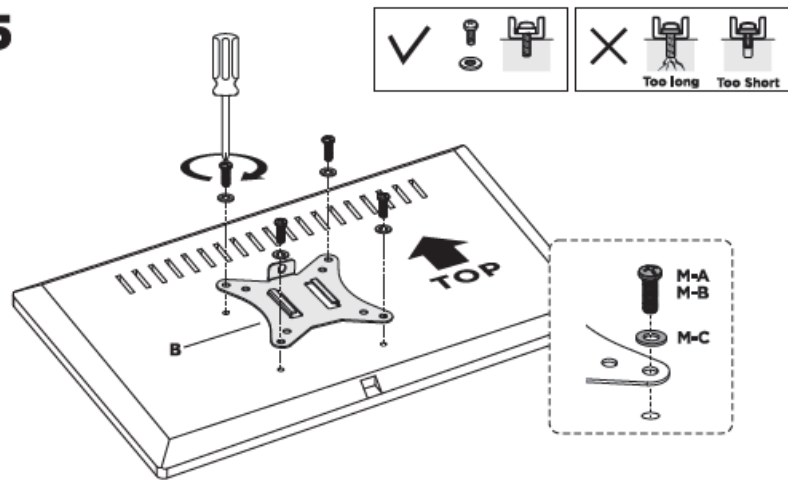
3

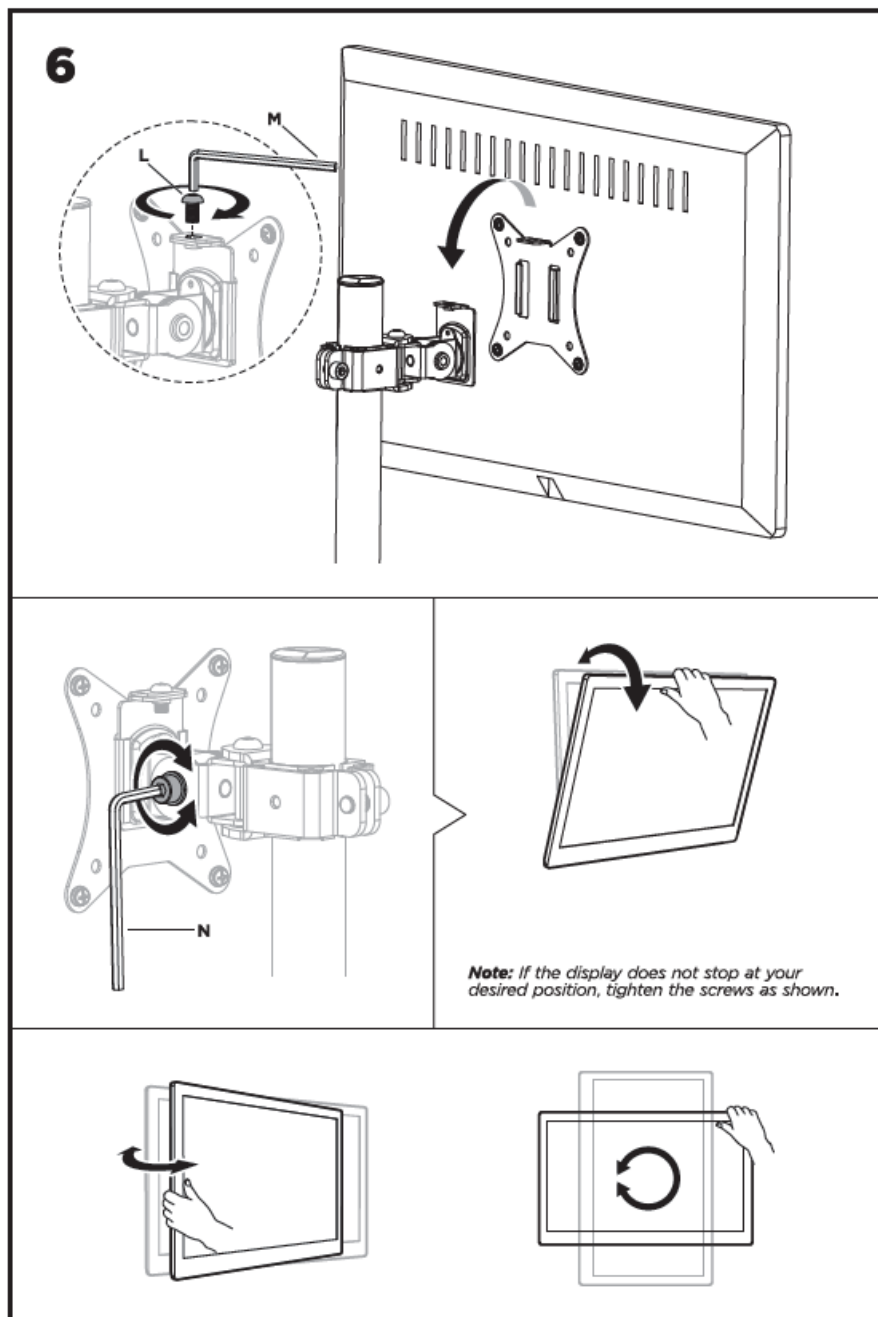


4



5





Documents / Resources

	<p>LUMI SP-POS-200 POS Mounting Solution Stand [pdf] Installation Guide SP-POS-200 POS Mounting Solution Stand, SP-POS-200, POS Mounting Solution Stand, Mounting Solution Stand, Solution Stand, Stand</p>
--	--

References

- [User Manual](#)