



Lumens VC-B30U USB PTZ Camera Controller User Manual

[Home](#) » [Lumens](#) » Lumens VC-B30U USB PTZ Camera Controller User Manual 

Lumens[®]

USB PTZ Camera Controller
User Manual
Version: 1.0.13 Issue
Date: AUG 16, 2021





Contents

- [1 Copyright Information](#)
- [2 What is the USB PTZ Camera Controller](#)
- [3 Connections and Installation](#)
- [4 Start Using](#)
- [5 Function Description](#)
- [6 I would like to perform...](#)
- [7 Troubleshooting](#)
- [8 Documents / Resources](#)
- [9 Related Posts](#)

Copyright Information

Copyrights © Lumens Digital Optics Inc., All rights reserved.

Lumens is a registered trademark of Lumens Digital Optics Inc.

Copying, reproducing or transmitting this file is not allowed if a license is not provided by Lumens Digital Optics Inc. unless copying this file is for the purpose of backup after purchasing this product.

In order to keep improving the product, Lumens Digital Optics Inc. hereby reserves the right to make changes to product specifications without prior notice. The information in this file is subject to change without prior notice.

To fully explain or describe how this product should be used, this manual may refer to names of other products or companies without any intention of infringement.

Disclaimer of warranties: Lumens Digital Optics Inc. is neither responsible for any possible technological, editorial errors or omissions, nor responsible for any incidental or related damages arising from providing this file, using, or operating this product.

What is the USB PTZ Camera Controller

1.1 Introduction to USB PTZ Camera Controller

The software enables users to control the PTZ camera and modify its settings, providing convenient camera control during a video conference.

1.2 Applicable to VC-B10U, VC-B11U, VC-B20U, VC-B30U, MS-10

Connections and Installation

2.1 System Requirements

OS: Windows 7 / 8 / 8.1 / 10

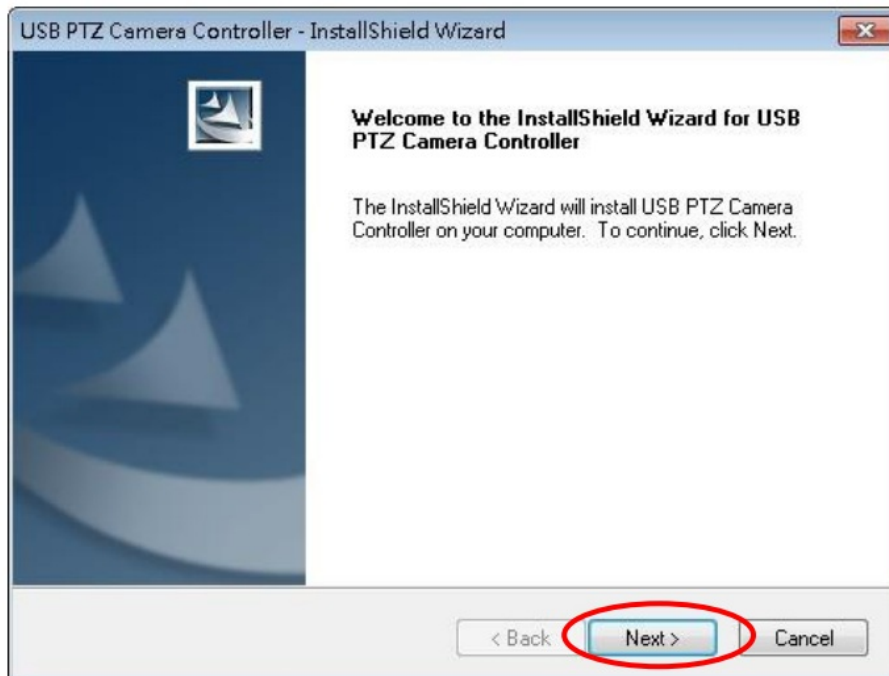
- CPU: Intel Core 2 Duo 2 GHz or above
- Memory: 1 GB (32-bits)/2 GB (64-bits)
- RAM Min Hard Drive Space: 1 GB or above
- Min Resolution: 1024 x 768
- Supporting Direct X

OS: MAC OS X 10.8 ~ 10.12

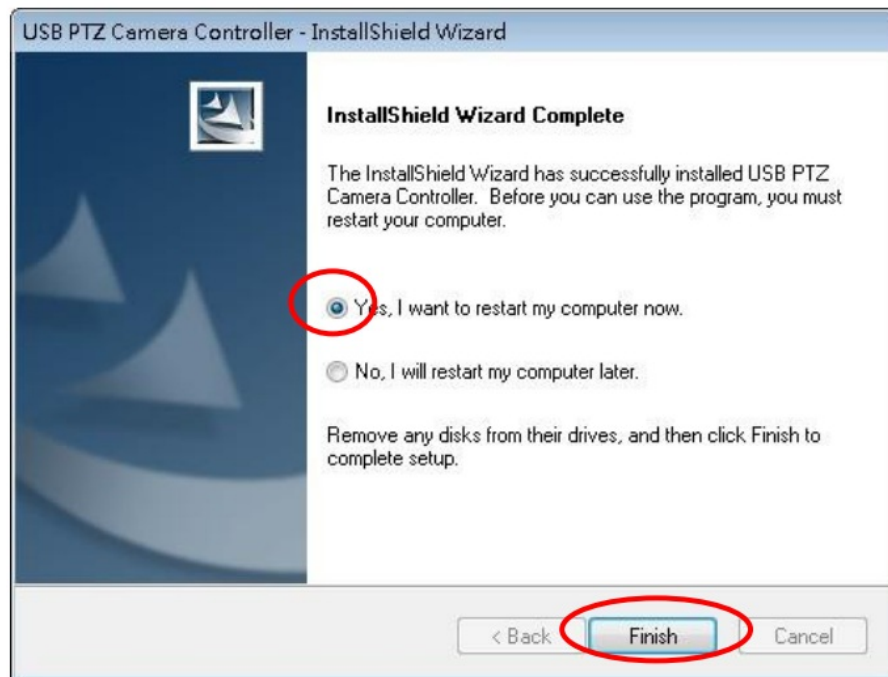
- CPU: CPU: Intel Pentium® 2 GHz Intel Core 2 Duo
- Memory: 1 GB DDR2 667 Hz RAM or above
- Min Hard Drive Space: 1 GB or above
- Min Resolution: 1024 x 768 24-bit display
- QuickTime: 7.4.5 or above

2.2 Installing USB PTZ Camera Controller on Windows

2.2.1 Click [setup.exe] to enter the installation screen, then follow the instruction on the screen to click [Next].



2.2.2 Please [Restart] the computer to complete the installation.



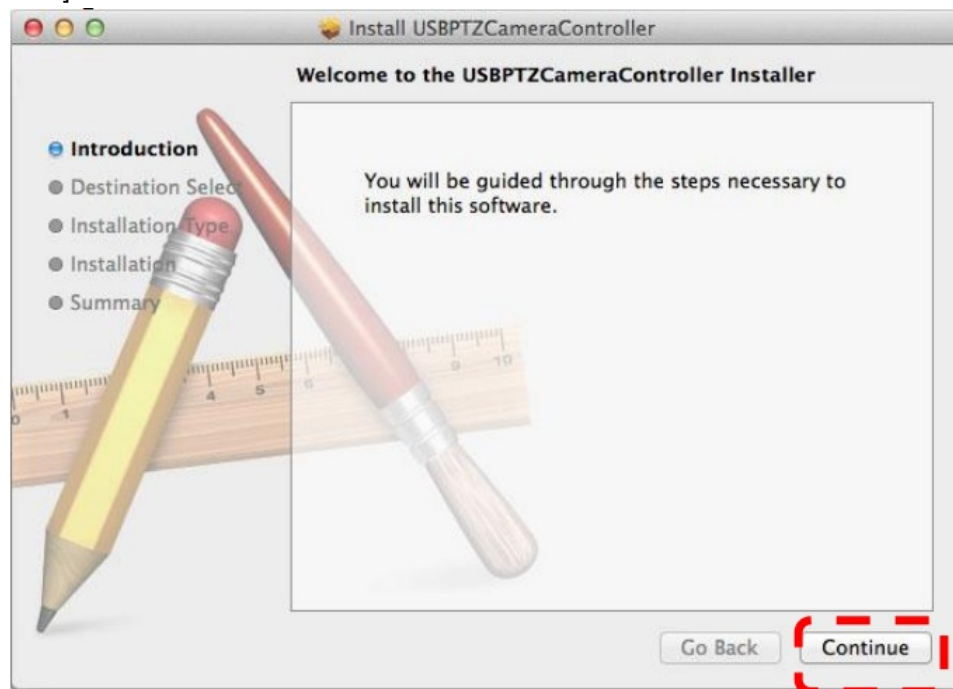
2.3 Installing USB PTZS Camera Controller on a MAC

2.3.1; Please download USB PTZ Camera Controller software on the LumenSTM website.

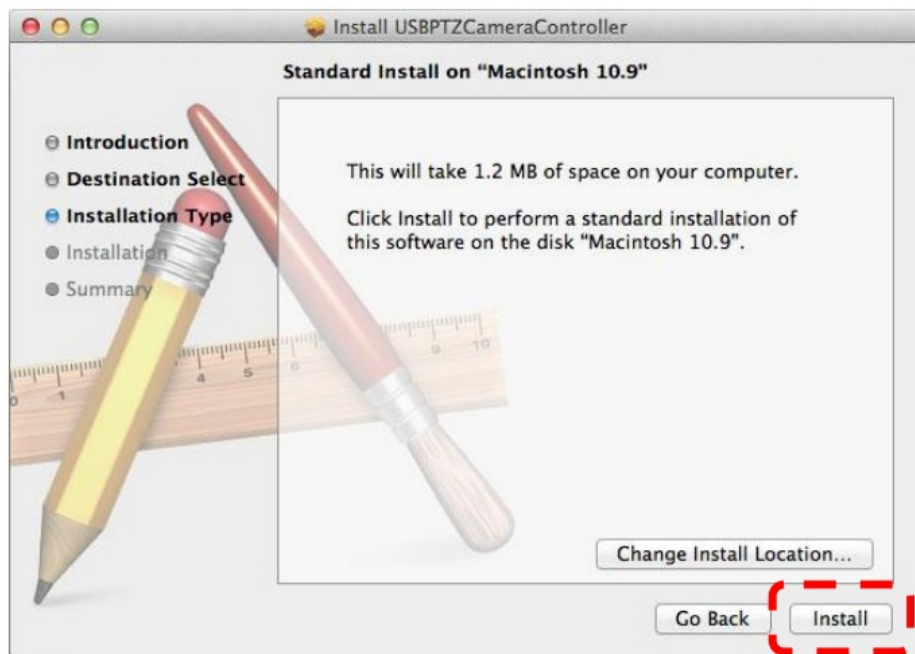
2.3.2 Extract the file downloaded and then click [USBPTZCameraController.pkg] to install.

2.3.3 Please finish the installation by following the on-screen instructions.

2.3.4 Click [Continue].



2.3.5 Click [Install].

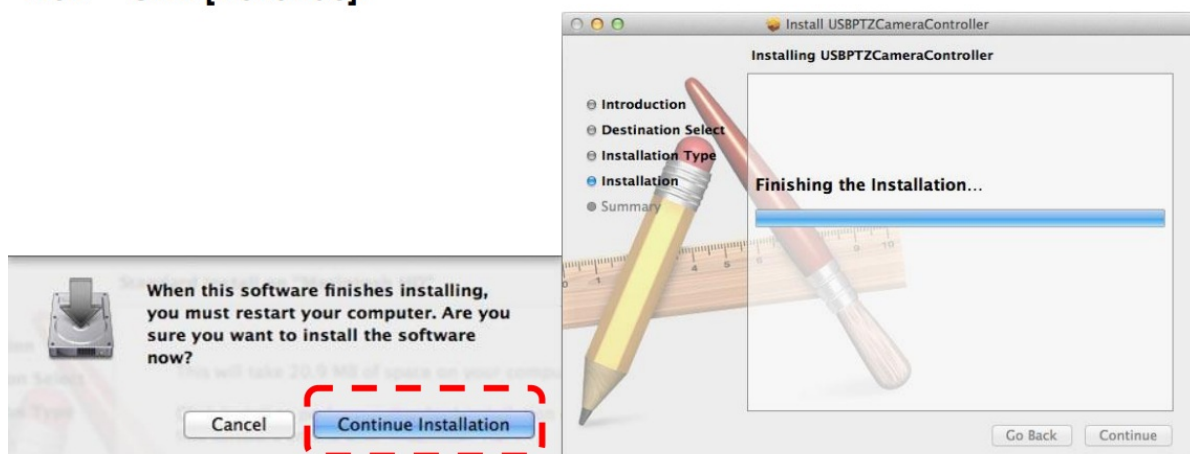


2.3.6 Enter the username and password, and then press [Install Software].

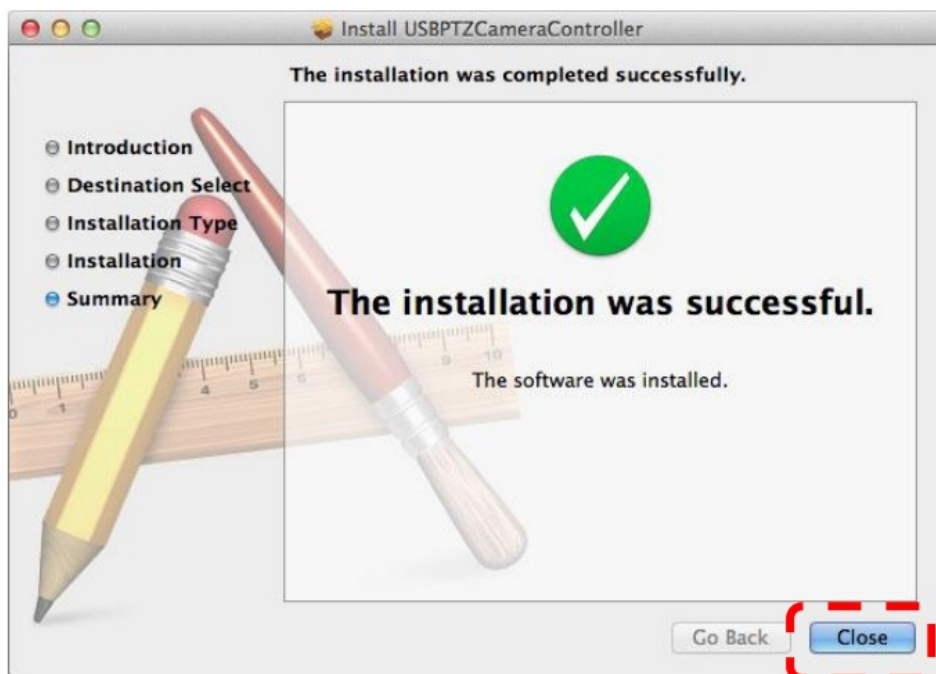


2.3.7 Click [Continue].

2.3.7 Click [**Continue**].



2.3.8 Press [Restart] to finish the software installation.



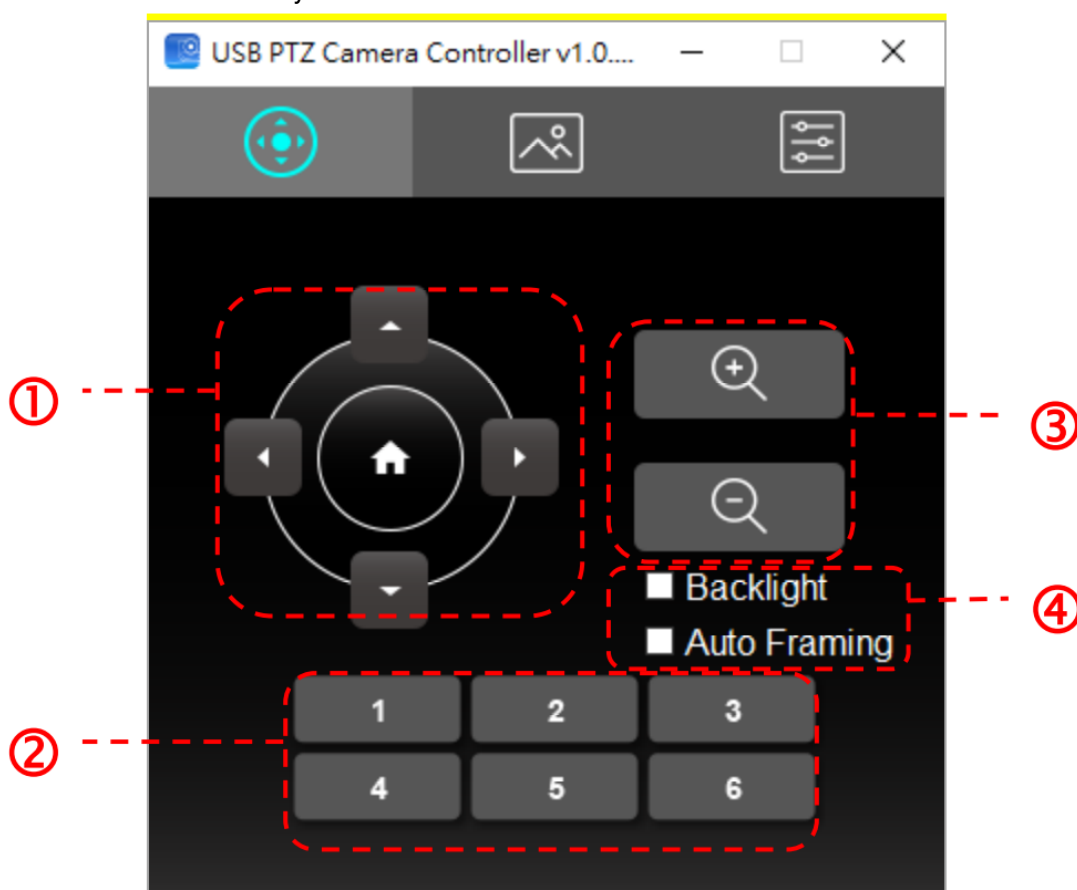
Start Using

Before launching the software, please ensure that the camera is correctly installed. Only launch USB PTZ Camera Controller after the video conference begins.


Function Description

4.1 PTZ main Screen

This screen offers a set of commonly used camera functions.

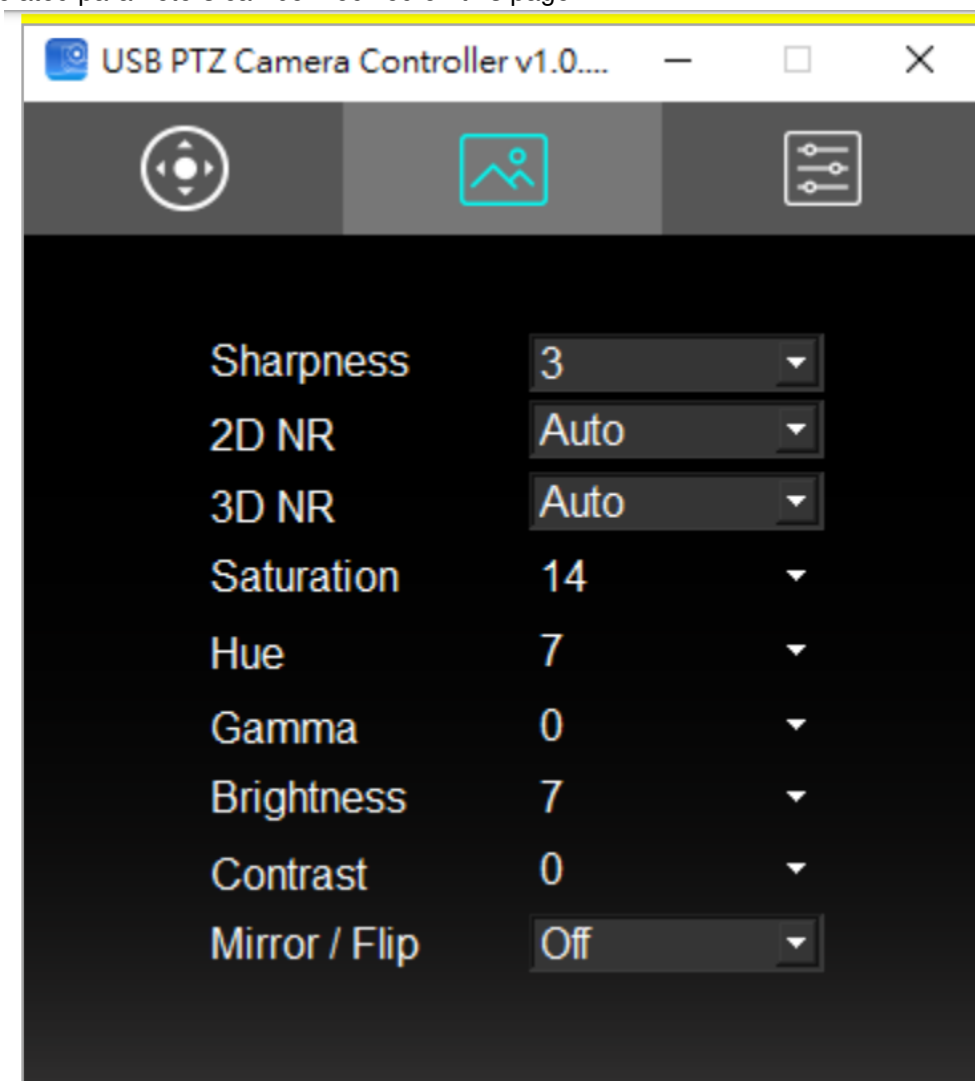


<Remark>The following descriptions are in the order of left to right and top to bottom as indicated in the figure

No.	Function	Description
1.		Move the lens
2.	Call Preset (1-6)	Pre-set Shortcuts
3.	Zoom +/-	Adjust image size (VC-B11U and MS-10 are not supported when the resolution is 4K)
4.	Backlight/ Auto Framing	Backlight compensation (VC-B10U is not supported) / Smart viewfinder

4.2 Picture Settings Page

Image quality-related parameters can be modified on this page

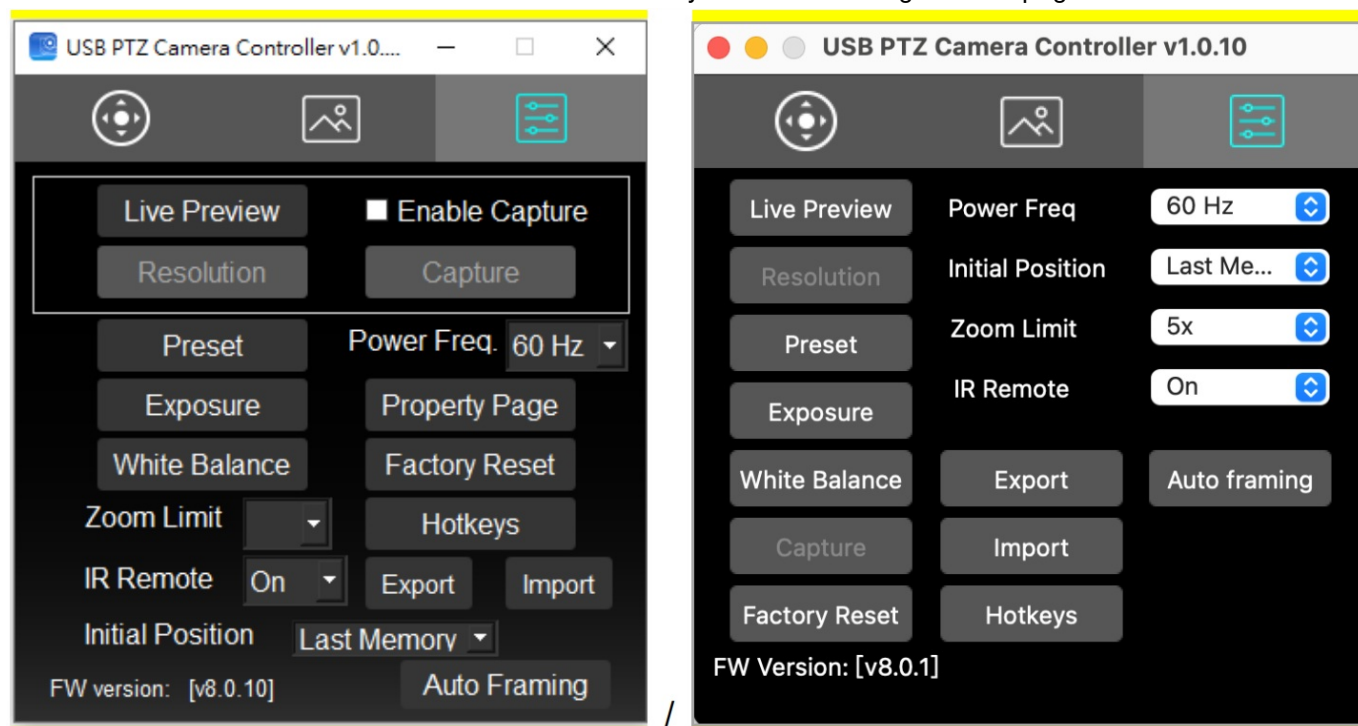


<Remark>The following descriptions are in the order of left to right and top to bottom as indicated in the figure

No.	Function	Description
1.	Sharpness	Adjust the Sharpness of the image
2.	2D NR	Noise reduction setting
3.	3D NR	3D dynamic noise reduction settings (VC-B10U is not supported)
4.	Saturation	Adjust the Saturation of the image
5.	Hue	Adjust the Hue of the image
6.	Gamma	Adjust the Gamma of the image
7.	Brightness	Adjust the Brightness of the image
8.	Contrast	Adjust the Contrast value of the image
9.	Mirror / Flip	Set the Mirror/Flip mode (VC-B10U is not supported)

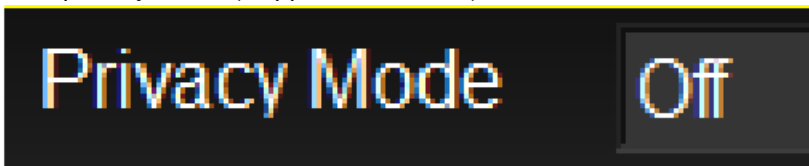
4.3 Advanced Settings

Users can access advanced camera functions and modify advanced settings on this page.



<Remark>The following descriptions are in the order of left to right and top to bottom as indicated in the figure

No.	Function	Description
1.	Live Preview	Opens the USB PTZ Camera preview window
2.	Resolution	Settings of the preview window resolution; this function will only be available when the preview window is launched
3.	Enable Capture	Deactivate capture function
4.	Capture	Capture images
5.	Preset	Opens the preset settings window
6.	Exposure	Opens the exposure settings window (VC-B10U
		is not supported)
7.	White Balance	Opens the white balance settings window
8.	Zoom Limit	Magnification Limit (Supports VC-B10U)
9.	IR Remote	Turns on/off remote control (VC-B20U and VC-B30U are not supported)
10.	Initial Position	Sets the initial position of power on (VC-B20U and VC-B30U are not supported)
11.	Auto Focus	Opens the autofocus settings window (Supports
		VC-B20U and VC-B30U)
12.	Power Freq.	Resets the power frequency
13.	Property Page	Opens the Windows built-in video property page
14.	Factory Reset	Returns to factory reset
15.	Hotkeys	Sets hotkeys
16.	Export	Exports the current Camera settings
17.	Import	Imports the Camera settings
18.	FW version	Displays the FW version number

19	Auto Framing	Sets Smart Viewfinder (Supports VC-B11U and MS-10)
20	Privacy Mode	Sets privacy mode (Supports VC-B30U) 

4.3.1 Exposure Settings

No.	Function	Description
	Mode	Exposure mode setting
	Exposure Comp.	AE Level(for VC-B30U)
3.	Exposure Level	Adjusts exposure level
4.	Manual Gain	The value can be adjusted when the mode is set to Manual
	Manual Speed	The value can be adjusted when the mode is set to Shutter Pri
6.	Manual Iris	The value can be adjusted when the mode is set to Manual or IRIS Pri
	Gain Limit	Different AE Modes store Gain Limit parameters respectively
8.	WDR	WDR stores parameters according to AE mode

4.3.2 Autofocus

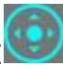




No.	Function	Description
1.	Mode	Sets focus mode
2.	AF Sensitivity	Selects AF triggering speed
3.	AF Speed	Focus speed after AF triggering
4.	AF Frame	Selects Full or Center focus
5.	Focus	The value can be adjusted when the mode is set to Manual
6.	AF One Push Trigger	Performs focus once
7.	Refresh	Refreshes Focus location status

4.3.3 White Balance Settings

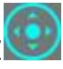
No.	Function	Description
	Mode	Sets white balance mode
	Auto Type Select	Selects different modes under Auto (for VC-B20U)
3.	Red Gain	The value can be adjusted when the mode is set to Manual
4.	Blue Gain	The value can be adjusted when the mode is set to Manual
	Auto White Balance	Performs auto white balance once
6.	Refresh	Refreshes Red Gain and Blue Gain location status

I would like to perform...

5.1 I would like to adjust the shooting angle of the lens

1. Switch to PTZ  page
2. Click on [ ,  ,  , ] to adjust the lens until the image is at the desired angle

5.2 I would like to zoom in/out images


1. Switch to PTZ  page
2. Press [+] to zoom in the image
3. Press [-] to zoom out the image

5.3 I would like to save/call a lens preset

5.3.1 Perform rapid switches between presets

1. Switch to PTZ  page
2. Click on [1] to [6] to change the angle of the lens


5.3.2 Switching between presents

1. Switch to the Advanced Settings  page
2. Press [Preset] to open the Preset Settings window
3. Select a preset number [0 ~ 127]
4. Click [Call Preset] to switch presets

5.3.3 Save preset

1. Switch to the Advanced Settings  page
2. Press [Preset] to open the Preset Settings window
3. Press [ ,  ,  , ] to adjust the lens
4. Press [+/-] to adjust the image
5. Select a preset number [0 ~ 127] 6. Press [Set Preset] to save a preset

5.4 I would like to adjust the focal length

1. Switch to the Advanced Settings  page
2. Click [Auto Focus] to open the autofocus settings window
3. Select [Manual]
4. Adjust [Focus]
5. Click [x] on the top right corner of the window once the parameters are set

Troubleshooting

6.1 My subject's face is underexposed because of a strong backlight.

Solution:

1. Activate BackLight

6.2 I have launched the USB PTZ Camera Controller but I cannot control the camera. Solution:


1. Please ensure that the VC-B20U is connected to a power source.
2. Ensure that the USB is connected.
3. If the problem persists, please contact our distributors or service center.

6.3 I am unable to Pan / Tilt the camera.

Solution:

1. Please ensure that the preview screen is open.

Documents / Resources

	<p>Lumens VC-B30U USB PTZ Camera Controller [pdf] User Manual VC-B30U, USB PTZ Camera Controller, VC-B30U USB PTZ Camera Controller</p>
--	---