

Nureva HDL300 Sound Location Data Enable Tracking For Lumens PTZ Cameras



Nureva HDL300 Sound Location Data Enable Tracking For Lumens PTZ Cameras User Guide

[Home](#) » [Lumens](#) » Nureva HDL300 Sound Location Data Enable Tracking For Lumens PTZ Cameras User Guide



Contents

- [1 Nureva HDL300 Sound Location Data Enable Tracking For Lumens PTZ Cameras](#)
- [2 Product Information](#)
- [3 Specifications:](#)
 - [3.1 Product Usage Instructions](#)
 - [3.2 Get Hardware connection](#)
 - [3.3 Install & step by Nureva Console client](#)
 - [3.4 Set angle position setting](#)
- [4 Documents / Resources](#)
 - [4.1 References](#)
- [5 Related Posts](#)



Nureva HDL300 Sound Location Data Enable Tracking For Lumens PTZ Cameras



Product Information

Specifications:

- **Model:** Nureva HDL300
- **Microphone:** Built-in HDL300 Microphone
- **Connectivity:** Cat5e Cable, HDMI Cable, USB 2.0 Cable
- **Processor:** CamConnect Processor (AI-BOX1)
- **Compatibility:** Windows OS PC
- **Camera:** Lumens PTZ Camera
- **Port:** Default port is 8931

Product Usage Instructions

1. Hardware Connection

Ensure all components are connected as follows:

- Connect the HDL300 Microphone using Cat5e, HDMI, and USB cables.
- Connect the CamConnect Processor (AI-BOX1) to the display and Meeting Room PC.
- Integrate the Lumens PTZ Camera with the system.

2. Install Nureva Console Client

Follow these steps to install and set up the Nureva Console client:

1. Download the Console client from the provided link: [Console Client Download](#)
2. Launch the Console client app and connect the USB cable from Nureva connect module to the PC.
3. Configure Nureva HDL300 integration by following the instructions in the manual.

3. Set Angle Position Setting

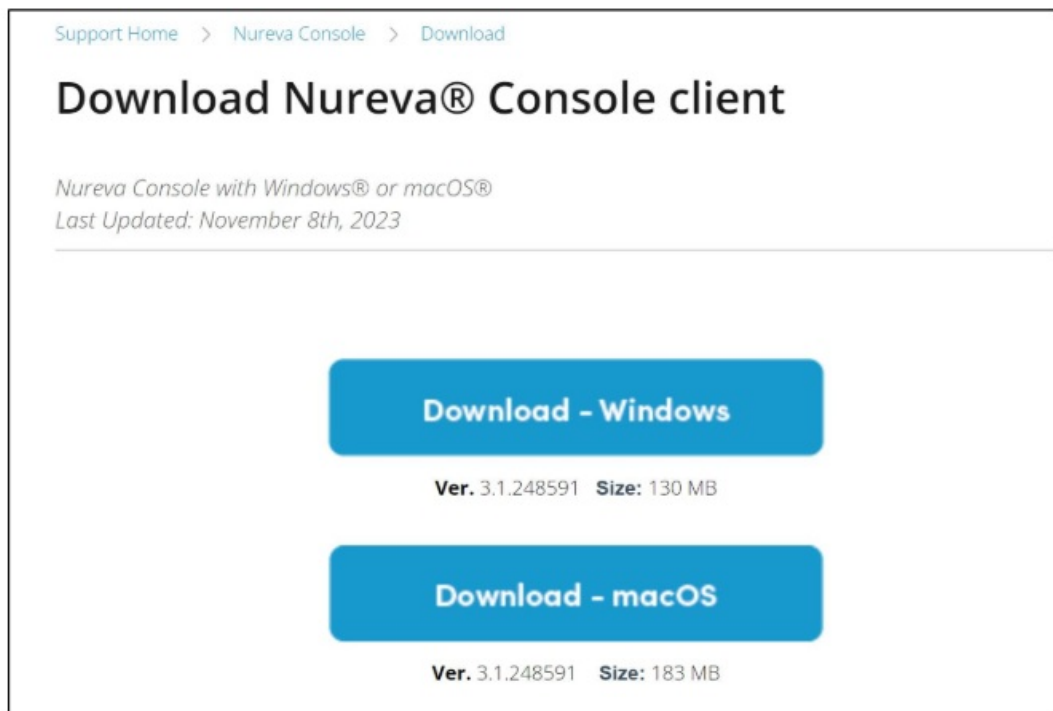
Adjust the angle position setting as needed:

- Azimuth Angle range is from -70 to +70 degrees with 0 degrees as the center point.
- Ensure sound sources are detected within the specified angle range for optimal performance.

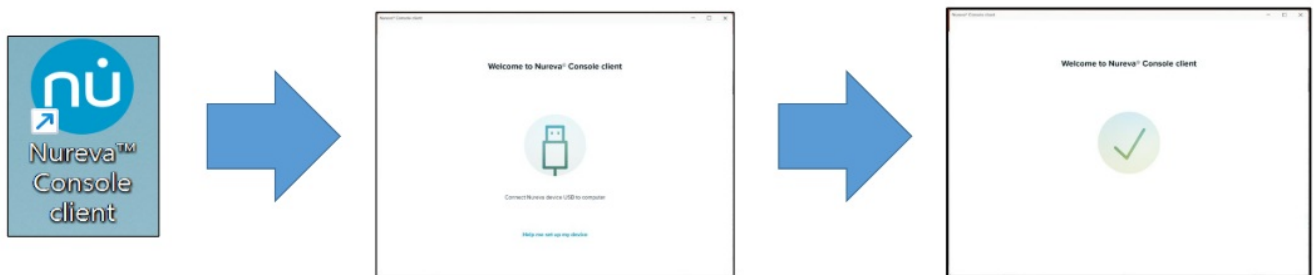
Frequently Asked Questions (FAQ)

- **Q: What is the default port for Nureva HDL300?**

- Using Console client for step Nureva HDL300
- Download [Console Client]
- <https://support.nureva.com/97341-download/win-mac-download-nureva-console-client>

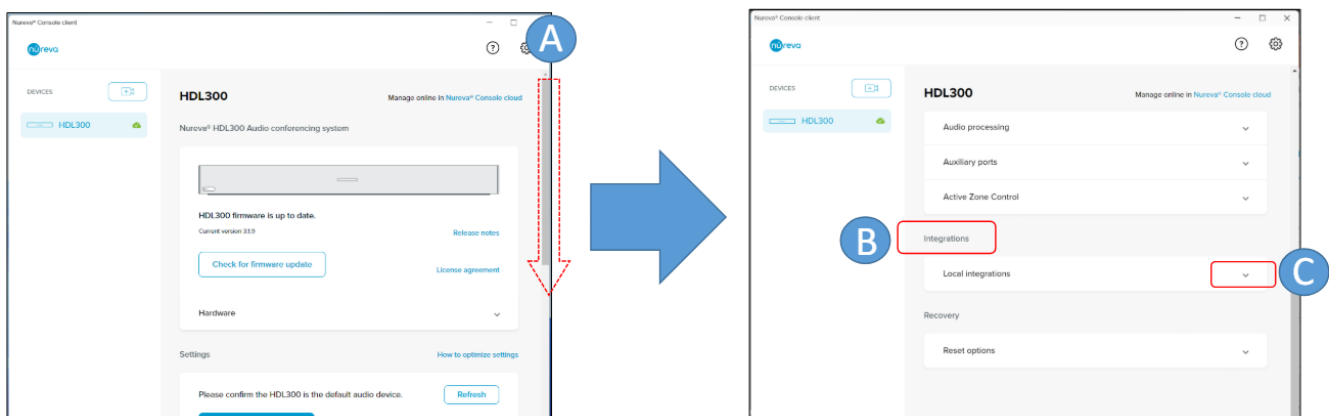


2. Setup Nureva Console client



After Nureva Console client setup is completed, launch Console client app and USB cable connect from Nureva connect module to PC

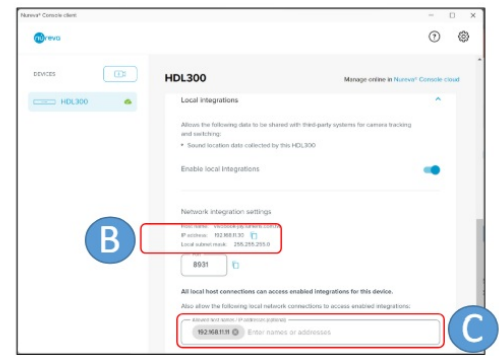
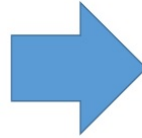
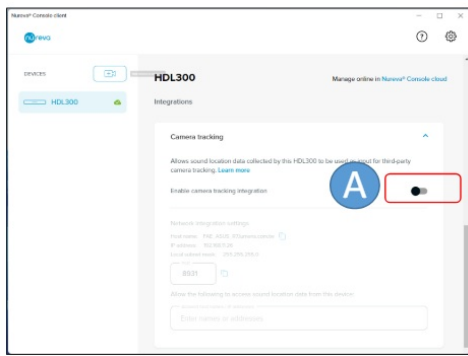
3. Setup Nureva HDL300 integration



- A: Drag the vertical scroll bar of the Console client down
- B: Scroll down until you see the 'Integrations' option
- C: Click the down arrow of [Local integrations]

4. Setup camera tracking integration

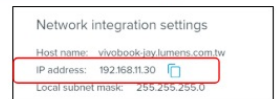
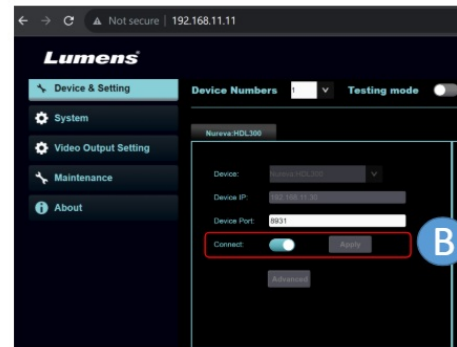
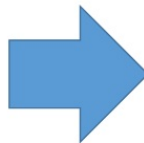
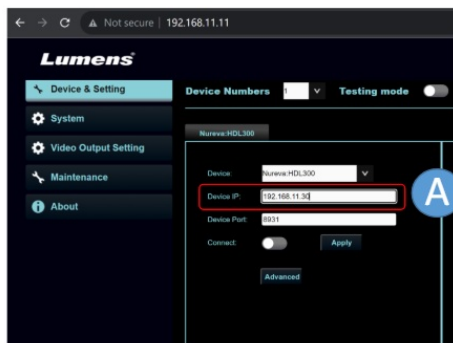
-



A: Click the scroll bar to enable [Network integration settings]

- B: Copy this IP, and we will use it to fill it in [Device IP] of CamConnect Pro
- C: Fill the IP of CamConnect Pro and Enter.

5. Setup camera tracking integration



A: Enter the IP which show in [Network integration settings]

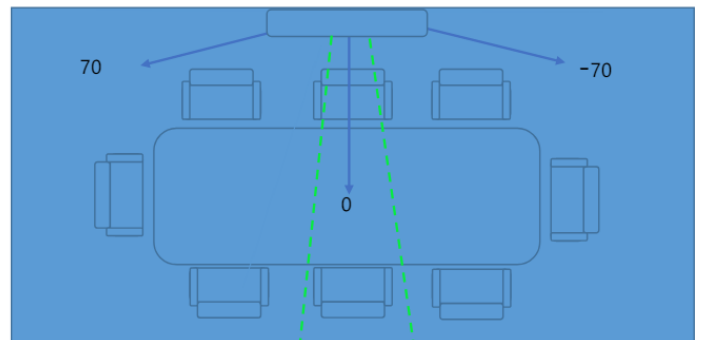
- B: Press [Apply] button and the toggle [connect] bar to enabled
- Nureva default port is 8931. Please confirm the port is allowed to connect with your PC.

Set angle position setting

Setup angle position setting


Azimuth Angle	Camera	Preset No.
-70 ~ -53	Off	1
-53 ~ -35	Off	2
-35 ~ -18	Off	3
-18 ~ 0	Off	4
0 ~ 17	Off	5
17 ~ 35	Off	6
35 ~ 52	Off	7
52 ~ 70	Off	8

Mic. Azimuth Angle: 0



Note: "Azimuth Angle" maximum angle range is from -70 to +70 degrees, which makes 0 degree as its center point.

The schematic diagram above shows a sound source detected in the 0 degree region.

	<p>Lumens Nureva HDL300 Sound Location Data Enable Tracking For Lumens PTZ Cameras [pdf] User Guide</p> <p>Nureva HDL300 Sound Location Data Enable Tracking For Lumens PTZ Cameras, Nureva HDL 300, Sound Location Data Enable Tracking For Lumens PTZ Cameras, Location Data Enable Tracking For Lumens PTZ Cameras, Data Enable Tracking For Lumens PTZ Cameras, Tracking For Lumens PTZ Cameras, Lumens PTZ Cameras, PTZ Cameras, Cameras</p>
---	---

References

- [User Manual](#)

Manuals+ Privacy Policy

This website is an independent publication and is neither affiliated with nor endorsed by any of the trademark owners. The "Bluetooth®" word mark and logos are registered trademarks owned by Bluetooth SIG, Inc. The "Wi-Fi®" word mark and logos are registered trademarks owned by the Wi-Fi Alliance. Any use of these marks on this website does not imply any affiliation with or endorsement.