

**Lumens®**

**FW047 Pro  
AI-Box1  
Camconnect  
Monitor**



# Lumens FW047 Pro AI-Box1 Camconnect Monitor User Manual

[Home](#) » [Lumens](#) » Lumens FW047 Pro AI-Box1 Camconnect Monitor User Manual 

## Contents

- [1 Lumens FW047 Pro AI-Box1 Camconnect Monitor](#)
- [2 Product Usage Instructions:](#)
- [3 FW047 – Camconnect Pro\(AI-Box1\) Firmware Update Manual](#)
- [4 FW Upgrade by OTA](#)
- [5 FAQs](#)
- [6 Documents / Resources](#)
  - [6.1 References](#)

**Lumens®**

## Lumens FW047 Pro AI-Box1 Camconnect Monitor



## Specifications

- Product Name: Camconnect Pro (AI-Box1)

- FW Version Supported: v1.5.6 and above
- Connection Interfaces: HDMI, Ethernet
- Power Supply: Power adapter or Power Cord

## **Product Usage Instructions:**

### **FW Upgrade by OTA:**

1. Connect the AI-BOX1 with Power, Monitor, and Ethernet.
2. Wait for the Firmware update prompt to appear.
3. Click on [Update Now] to start the update process.
4. The update will start automatically and take around 6 minutes.
5. After the update is complete, Camconnect Pro will restart, and you can check the version on the upper right corner.

### **FW Upgrade by Webpage:**

1. Prepare the following devices and tools: AI-Box1, PC or Laptop, Monitor, Power adapter/power cord or Ethernet cable, Switch or Router.
2. Connect the devices via a switch or router, ensuring IP address ranges are the same.
3. Open a browser and enter the IP address of AI-Box1 in the address bar.
4. Select [System] > [Setting] > [Maintenance] > [Firmware Update] to choose the firmware file and start updating.
5. The download process will take around 5-10 minutes. Monitor the status from HDMI output or webpage.
6. After the update process is complete, the system will shut down automatically. Power on or re-plug the power adapter when indicated.
7. Login to the webpage again to check the FW version from [About] > [Version].




## **FW047 – Camconnect Pro(AI-Box1) Firmware Update Manual**

There are two methods to upgrade the FW, please find the instruction from following chapters.

- FW Upgrade by OTA
- FW Upgrade by Webpage
- “Browser update MUST unplug/plug power supply” while “internet update, NO NEED to unplug/plug power supply”.

### **FW Upgrade by OTA**

1. Tools

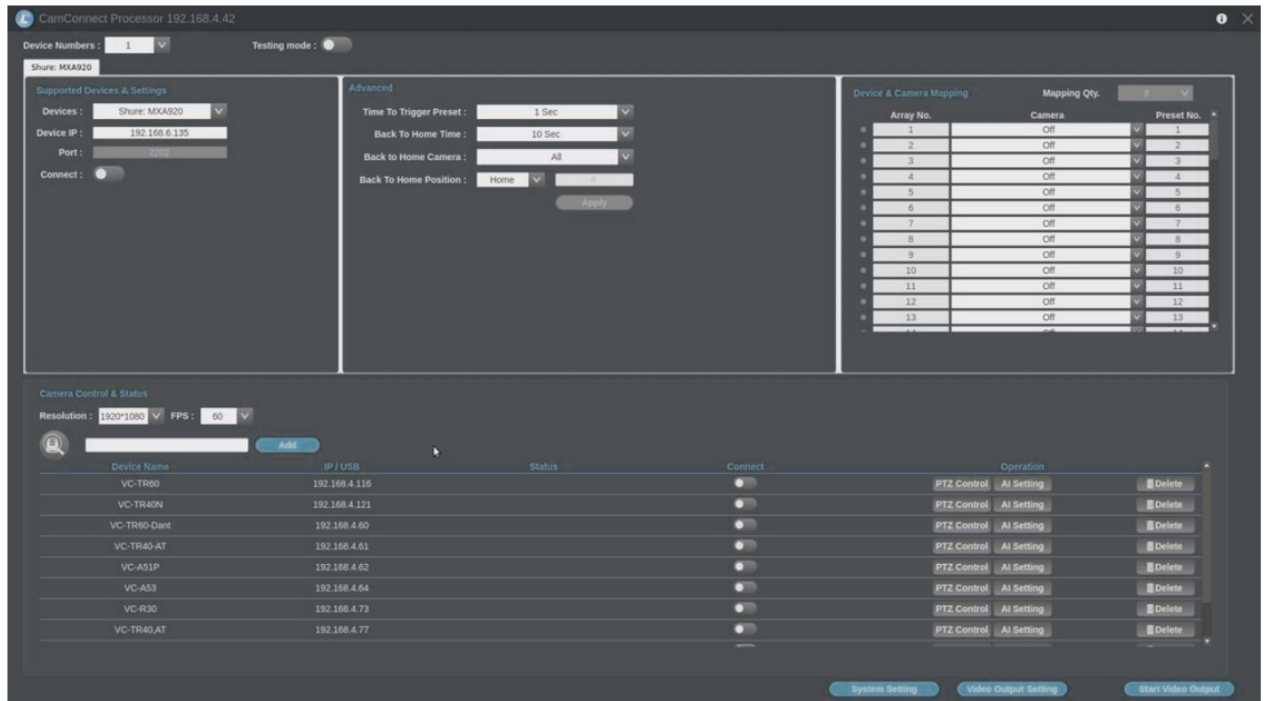
<b>Power adapter /</b>  <b>Power Cord</b>	<b>HDMI cable</b>  <b>Ethernet Cable</b>	<b>Monitor</b>
		

## 2. FW Update – Video

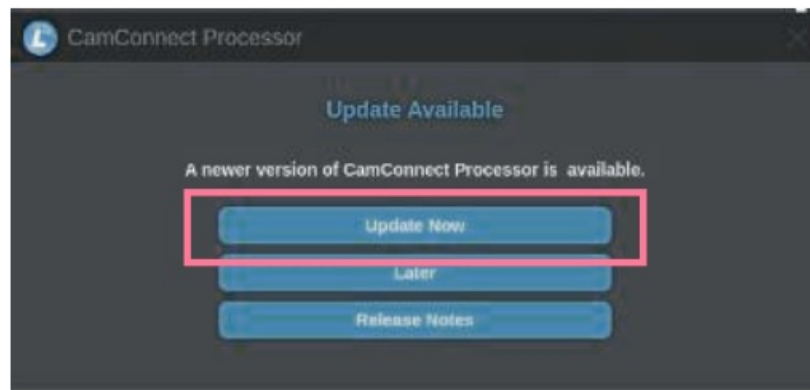
1. Connect the AI-BOX1 with Power, Monitor and Ethernet.



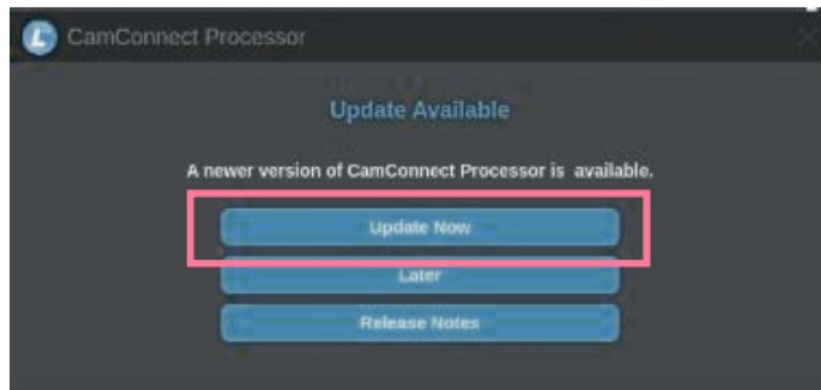
2. Please find the following screen.



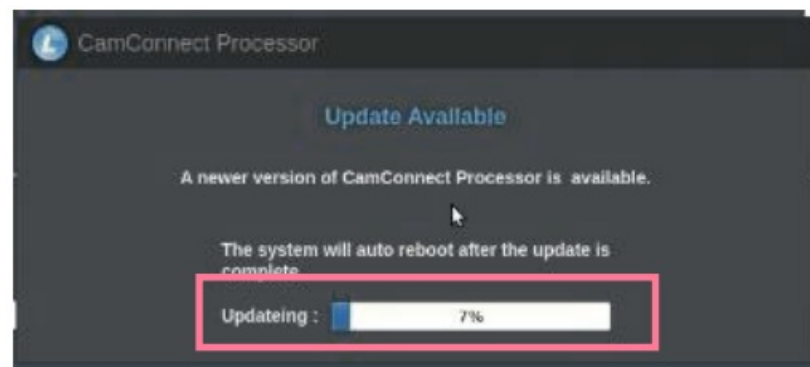
3. The Firmware update will pop up in seconds.



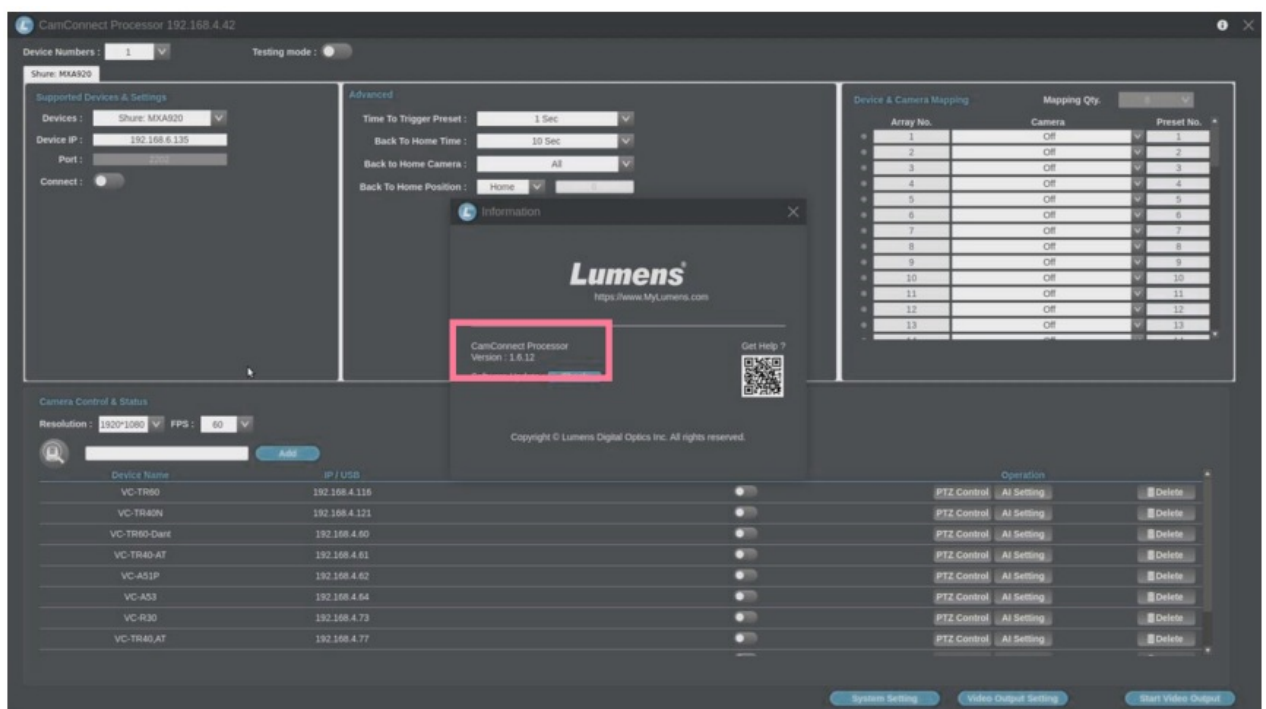
4. Please Click [Update Now] to proceed update.



5. FW Update will start automatically. (Around 6 minutes taken)










6. When FW Update finish, Camconnect Pro will restart and you can check version on upper right corner.



## FW Upgrade by Webpage

### 1. Device and Tool Preparation

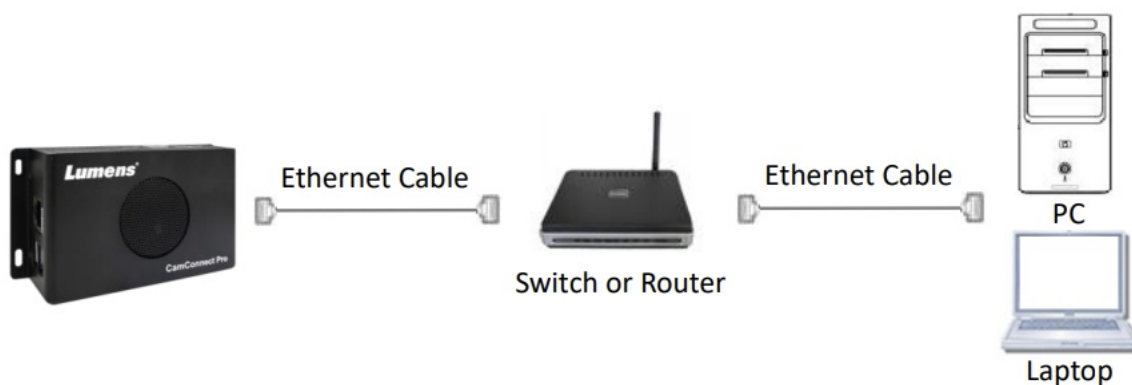
1. Please prepare following devices and tools before FW upgrade.

AI-Box1	PC or Laptop	Monitor
	 or 	
Power adapter and power cord	Ethernet cable and HDMI cable	Switch or Router
		

### 2. Connections

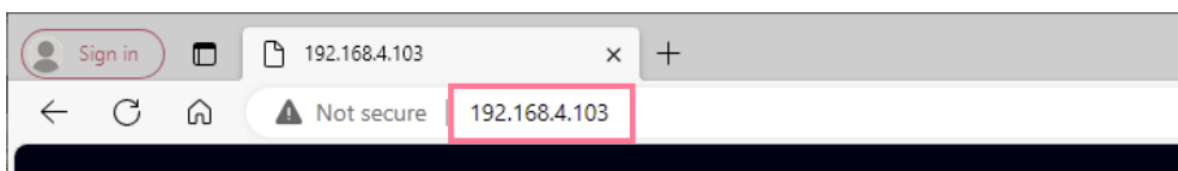
#### 1. Connecting via switch or router.

- Make sure the IP address range are the same and if possible avoid multiple opened network interface card on PC you are sending FW from.

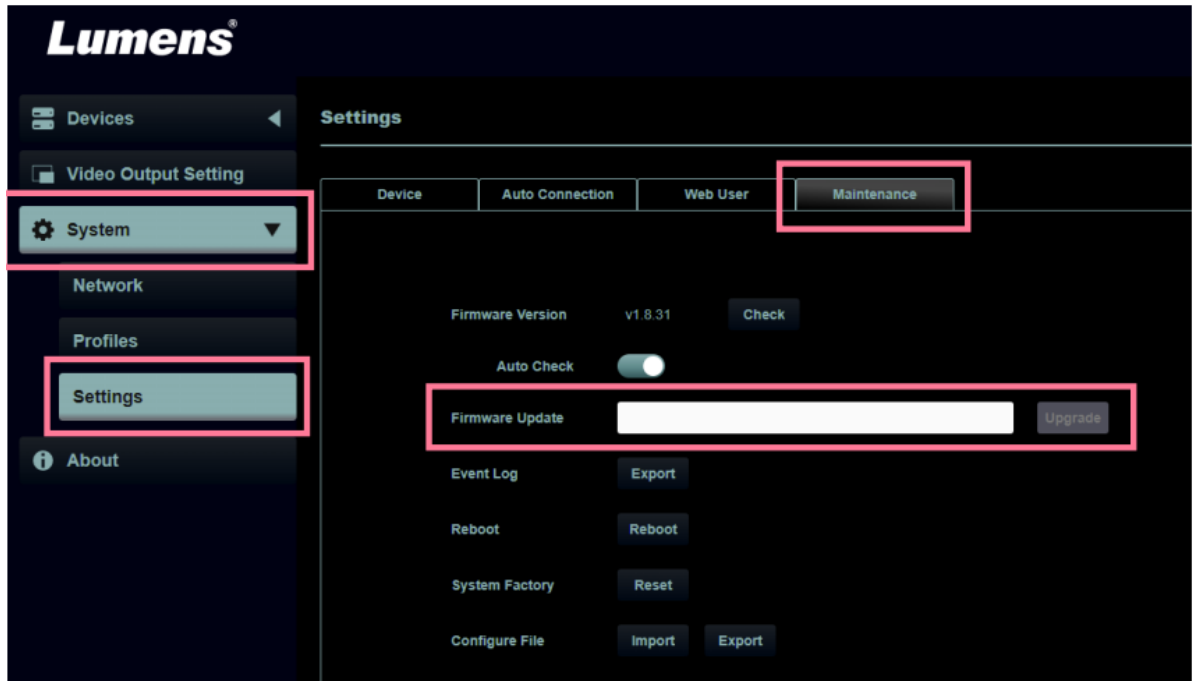


### 3. FW Update

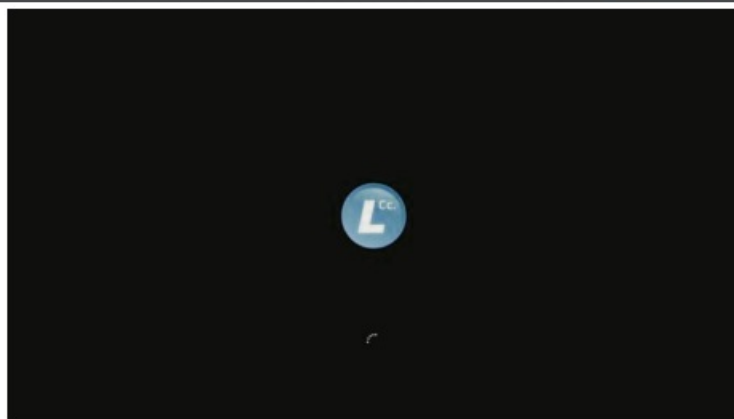
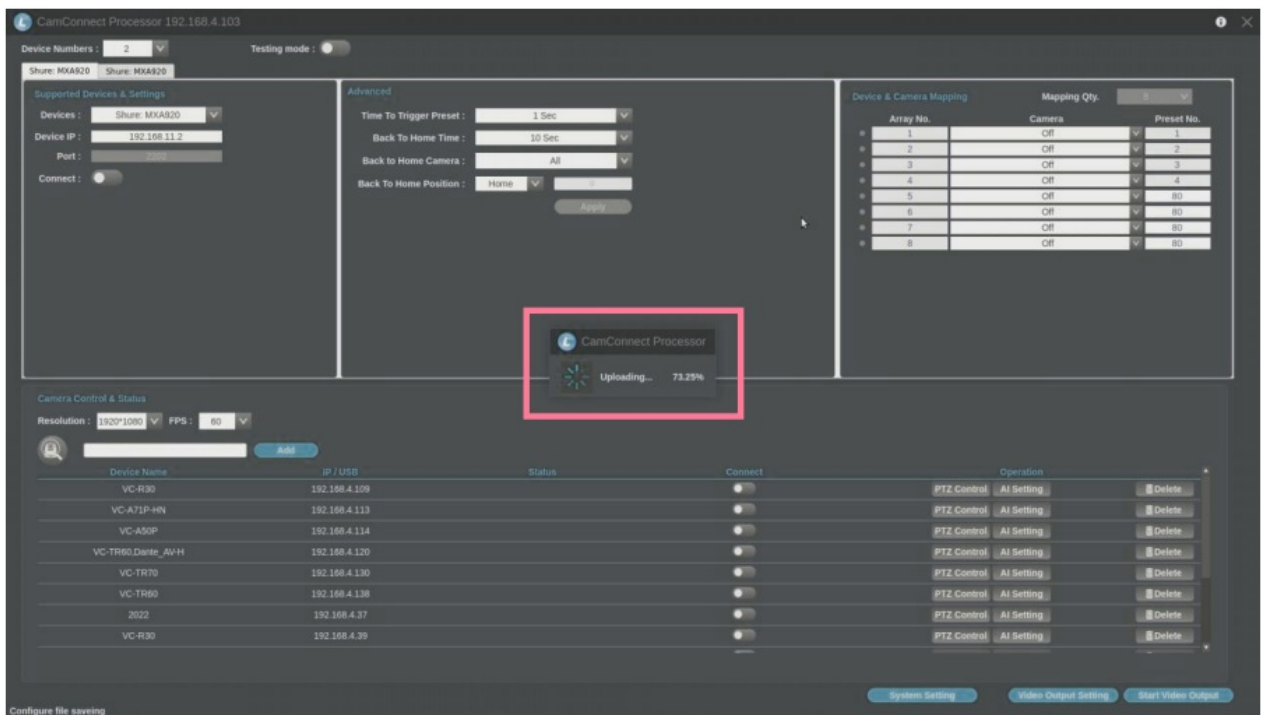
1. Open browser and enter the IP address of AI-Box1 in the address bar.
  - You can check the IP address from the [Operation Interface].

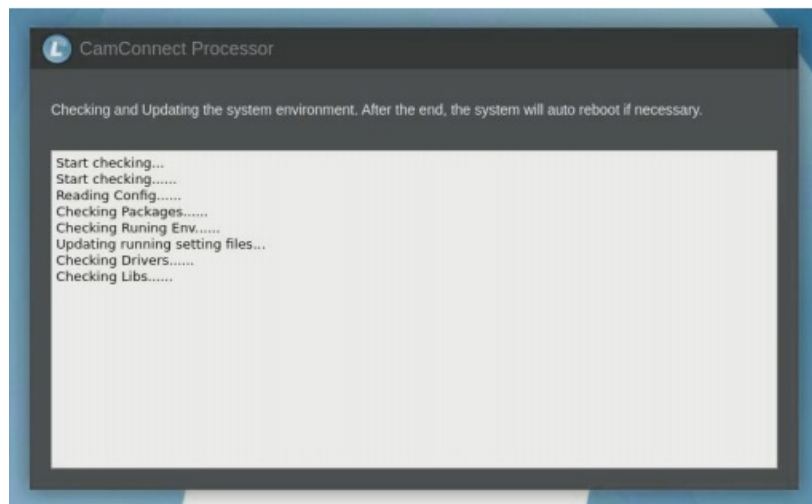
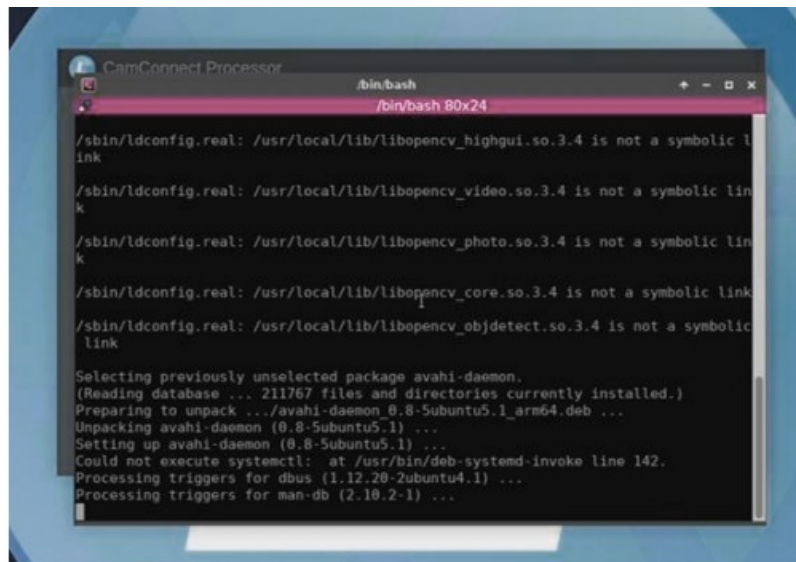


2. Select [System]> [Setting]> [Maintenance]> [Firmware Update] to select firmware file and start updating.
  - Webpage Update function is available after FW version v1.5.6.



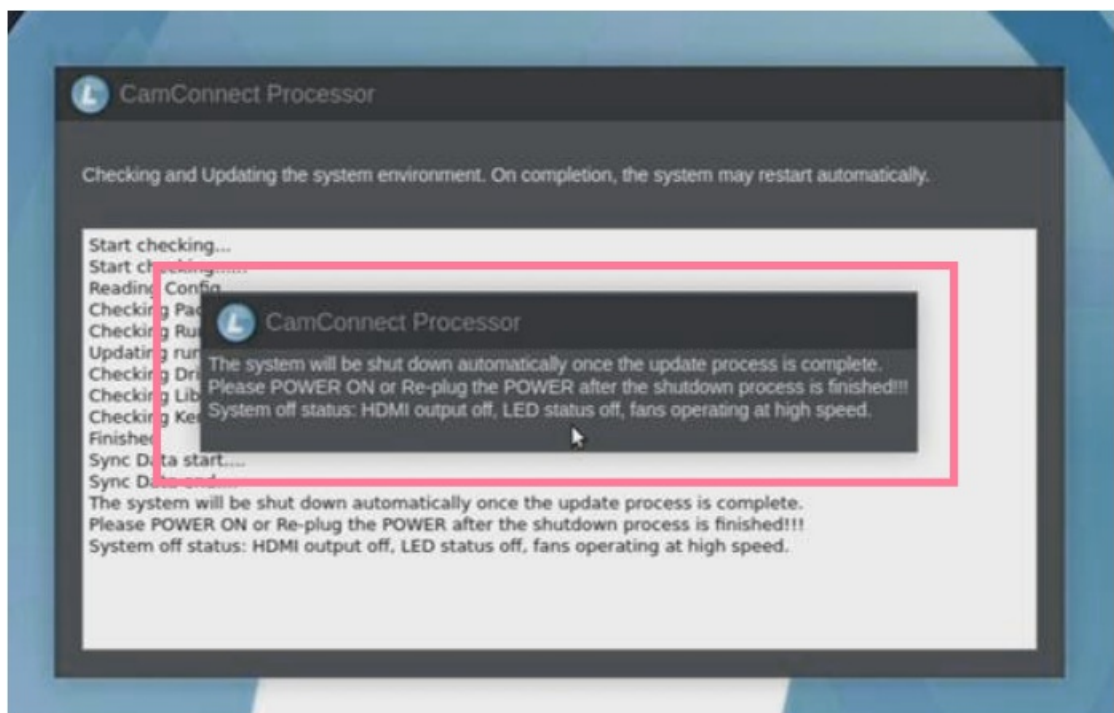
3. FW download starts(around 5-10 minutes taken), please check the status from HDMI output or webpage, don't unplug the cables and refresh the browser.





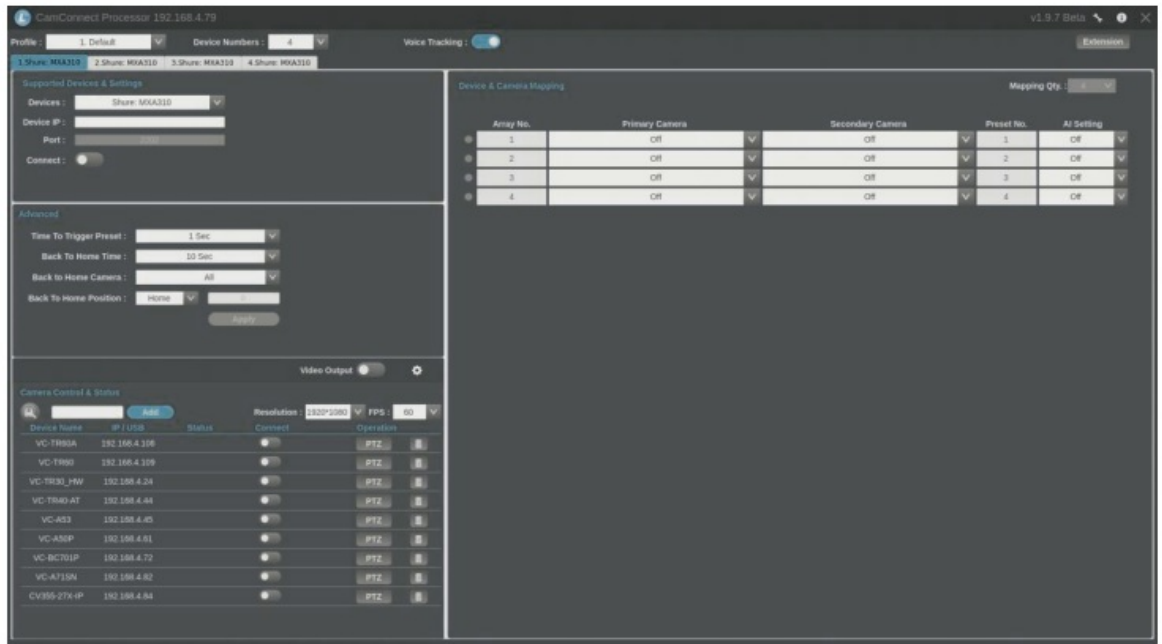
4. After FW update process is complete, the system will be shut down automatically, please power on or re-plug the power adapter when the HDMI output off and the fan is running at a high speed.

- **Note:** This message will show around 1-2 minutes, please DO NOT unplug the cables until hearing the fan at a high speed.

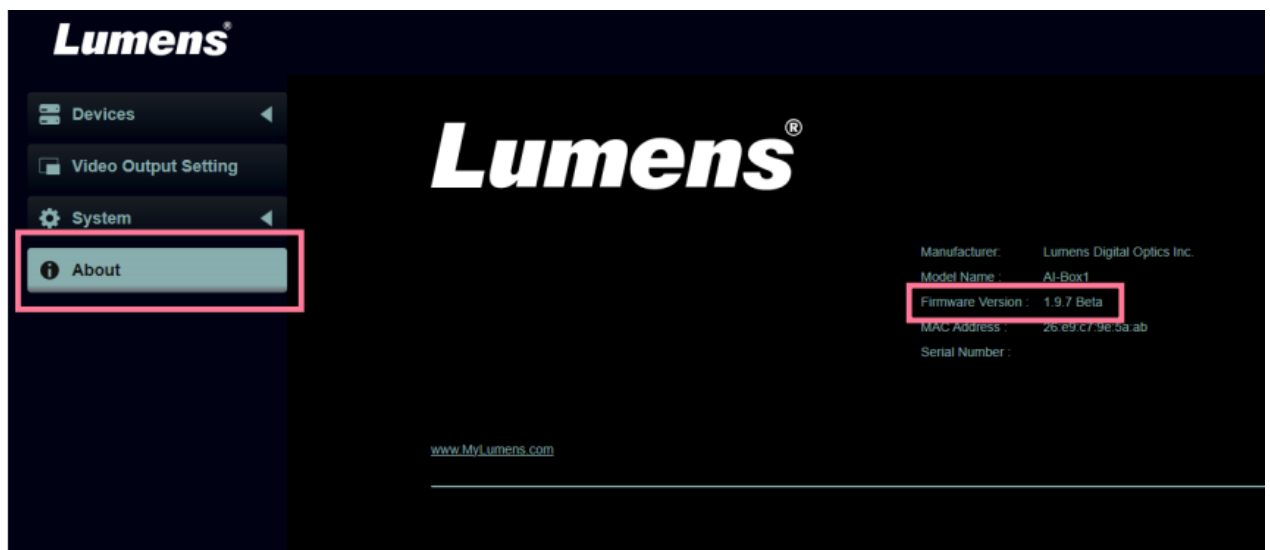




# System Initializing...



5. Please enter the IP address, login webpage again and check the FW version from [About]> [Version].



FW047 – Camconnect Pro(AI-Box1) Firmware Update Manual

## FAQs

**Q: How can I check the current firmware version of Camconnect Pro?**

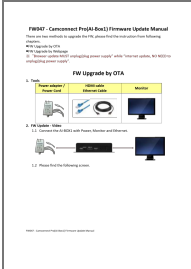
A: You can check the FW version on the upper right corner after a successful update for OTA method, or login to the webpage and navigate to [About] > [Version] for Webpage method.

**Q: What should I do if the update process encounters an issue or error?**

A: If there is an issue during the update process, ensure stable power supply and network connection. Try restarting the update process or contact customer support for assistance.

## Documents / Resources





[Lumens FW047 Pro AI-Box1 Camconnect Monitor](#) [pdf] User Manual  
FW047, FW047 Pro AI-Box1 Camconnect Monitor, Pro AI-Box1 Camconnect Monitor, Camconnect Monitor, Monitor

## References

- [User Manual](#)

### Manuals+, Privacy Policy

This website is an independent publication and is neither affiliated with nor endorsed by any of the trademark owners. The "Bluetooth®" word mark and logos are registered trademarks owned by Bluetooth SIG, Inc. The "Wi-Fi®" word mark and logos are registered trademarks owned by the Wi-Fi Alliance. Any use of these marks on this website does not imply any affiliation with or endorsement.