



## LUMENE 200CEBLT ExtraBright LT Motorized Floor Screen User Manual

[Home](#) » [LUMENE](#) » LUMENE 200CEBLT ExtraBright LT Motorized Floor Screen User Manual 

### LUMENE 200CEBLT ExtraBright LT Motorized Floor Screen User Manual



*Thank you for choosing Lumene products. Please read the manual carefully before installation and use. And put it away for future use.*

- Please tear out all the blue tape from the trap door before powering on.*

- Please do not reach into the casing gap to prevent hands injury when the screen goes up.
- Please put the screen in place with no wind to prevent it from falling over.
- Do not dismantle or replace original spare parts without consulting us.
- If you have any problems, don't hesitate to contact our after-sales service.
- Any functional or structural adjustment will not be further notified and subject to practical product.

## Contents

### 1 PARTS

### 2 SCREEN STRUCTURE DIAGRAM

### 3 SCREEN INSTALLATION GUIDELINES

### 4 FUNCTIONS AND INSTRUCTIONS

### 5 DOOR ANTI-PINCH FUNCTION

### 6 FABRIC CLEANING

### 7 PRECAUTION FOR USE

### 8 CLEAN SOFTLY

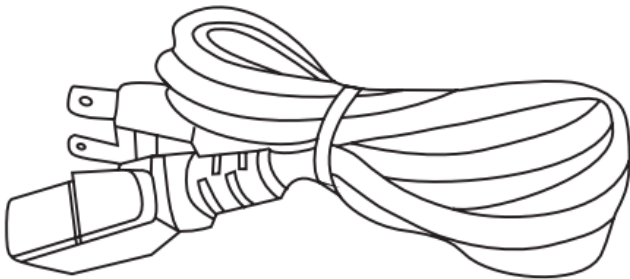
### 9 LIMITED WARRANTY:

### 10 Documents / Resources

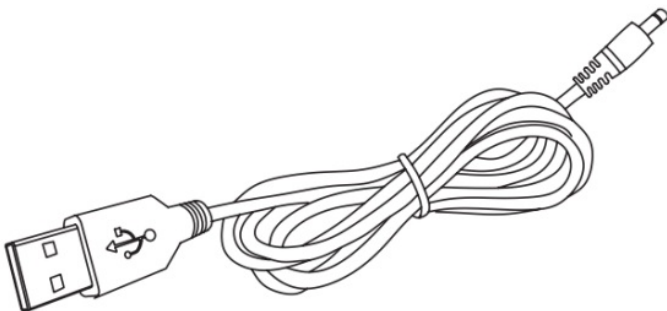
#### 10.1 References

### 11 Related Posts

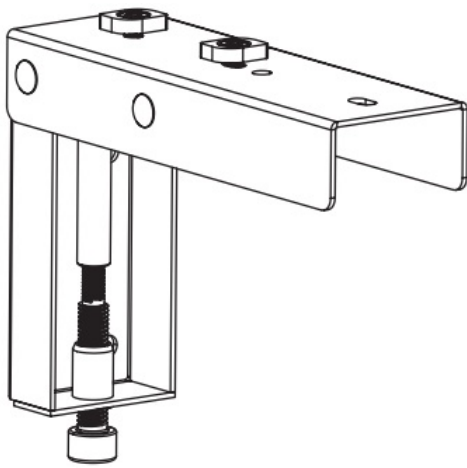
## ***PARTS***



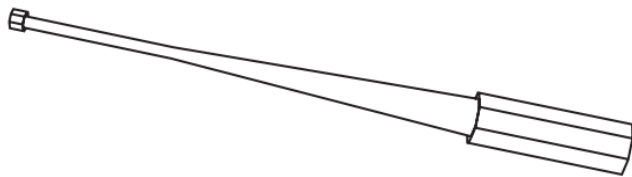
*x1 Power cable*



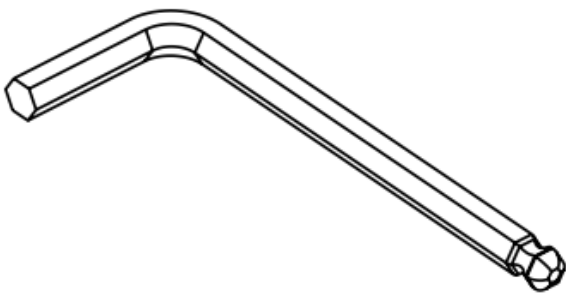
*x1 USB to 2.5mm jack*



*x2 Adjustable Mounting Bracket (optional)*



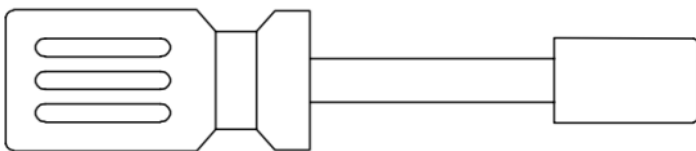
*x1 Adjustment key (4mm)*



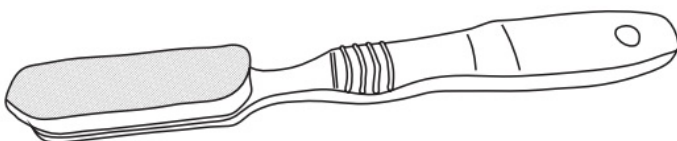
*x1 Allen Key*



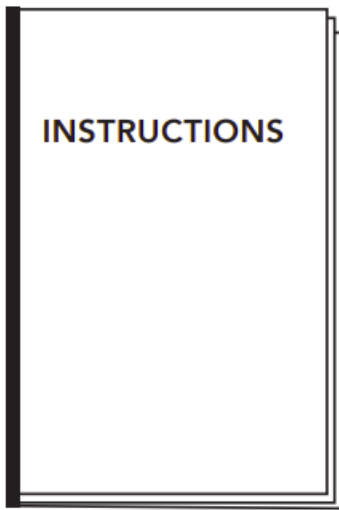
*x6 M5 nylon nut*



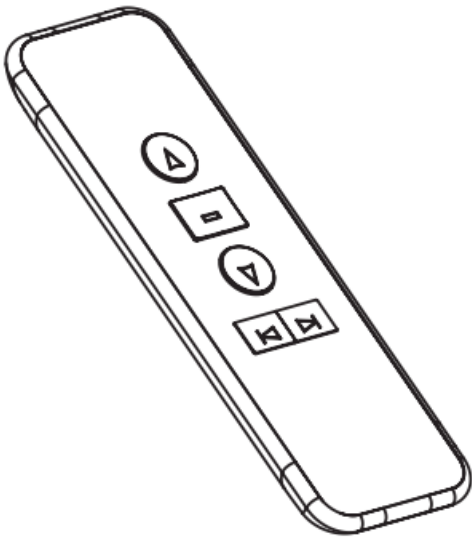
*x1 Socket wrench*



*x1 Brush*

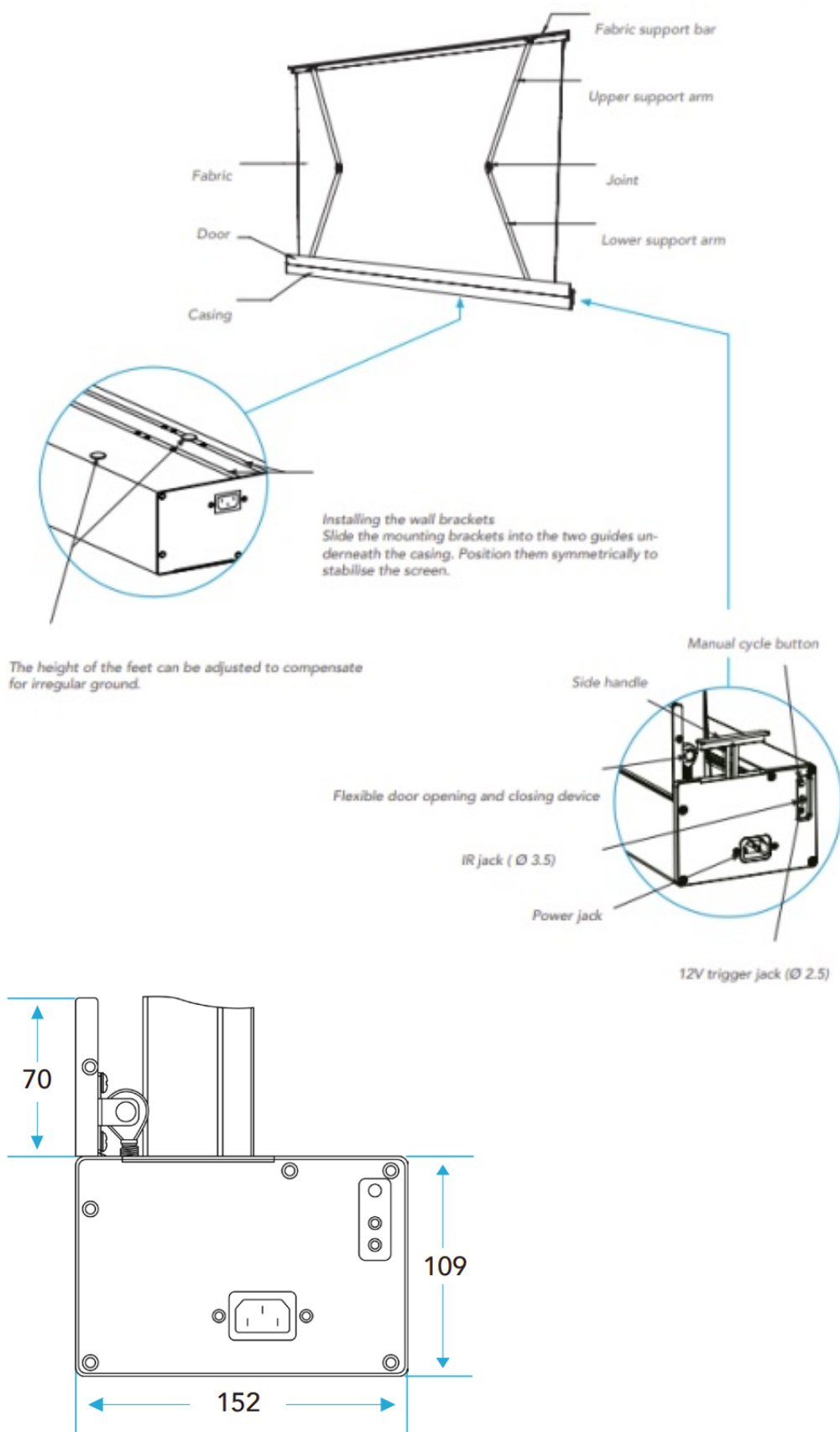


*x1 User manual*



*Battery is not provided. Remote needs 2 x button cell CR2032  
x1 Wireless remote*

## **SCREEN STRUCTURE DIAGRAM**



Side view

## SCREEN INSTALLATION GUIDELINES

Lay the projection screen flat on the cabinet: leave at least 4mm of room from the wall for the door's operation.

Fully extend the projection screen using the remote, adjust the tilt of the projection screen using the level adjustment nobs under the casing.

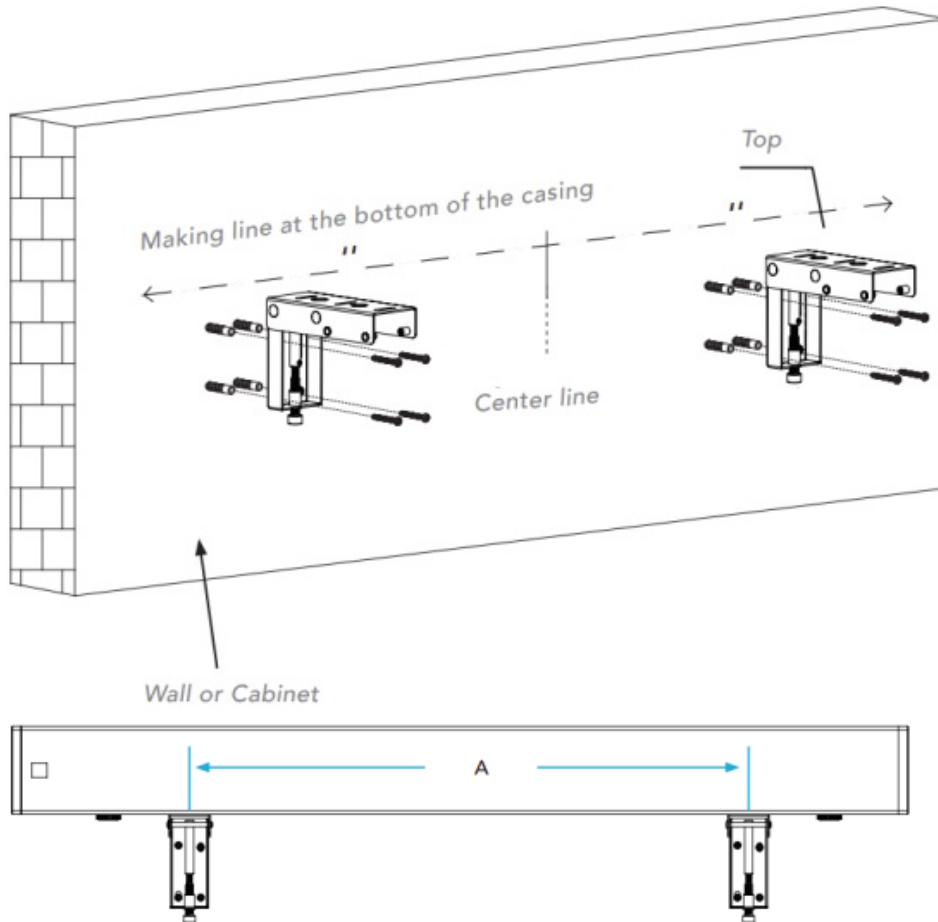
**Caution:** Projection screen might tip over if there is too much tilt.

**a.** Measure the total length of the casing, measure the height where the bottom of the projection screen will be placed, and mark it on the wall.

See value "A" on the table for the recommended distance between the two Adjustable Brackets.

Line up the top of the Adjustable Bracket with the bottom of the projection screen (mark that was made on the wall).

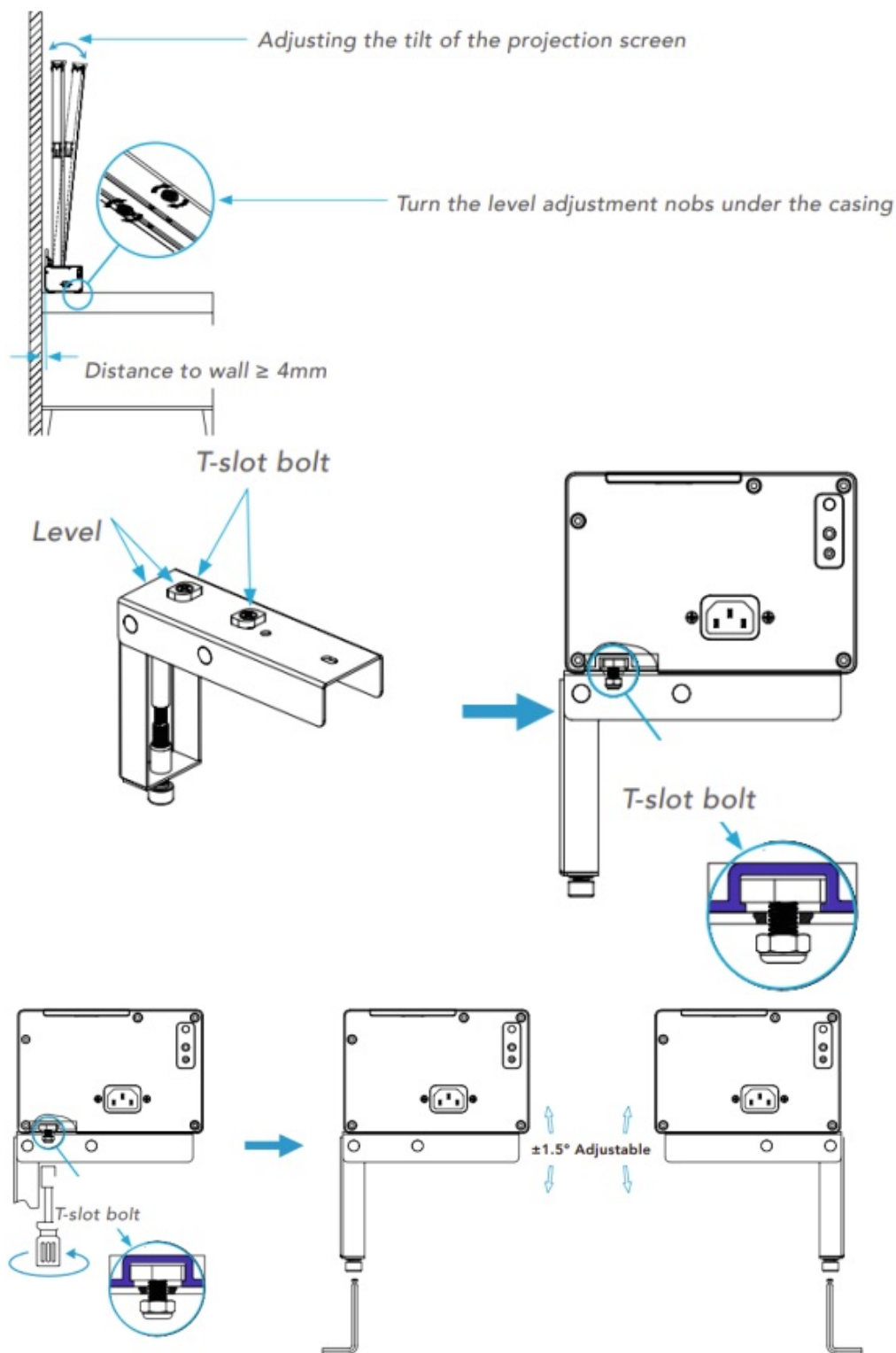
**b.** Drill the 4 holes for each bracket on the wall, install an Expansion Fixture in each hole. Place the Adjustable Brackets against the wall lining up with the Expansion Fixtures and tighten using  $\Phi 5 \times 40$  Tapping Screws.



**c.** Adjust the T-slot bolt on the Adjustable Bracket so that they are parallel with the wall (see diagram), place the projection screen on the Adjustable Brackets, adjust the projection screen horizontally to the desired position, tighten the T-slot bolt from under the Adjustable Brackets to lock in place.

(T-slot bolts are installed for front installation in default, user can install the T-slot bolt to the Reverse Mounting Holes when needed for reversed installation)

**d.** Connect to power, fully extend projection screen; observe for tilt, adjust tilt using the Allen Key to desired position to finish installation.



Size (diagonal)	92" (16:9)	100" (16:9)	110" (16:9)	120" (16:9)
Distance A (mm)	1630	1810	1910	2130

## FUNCTIONS AND INSTRUCTIONS

This product has three control methods

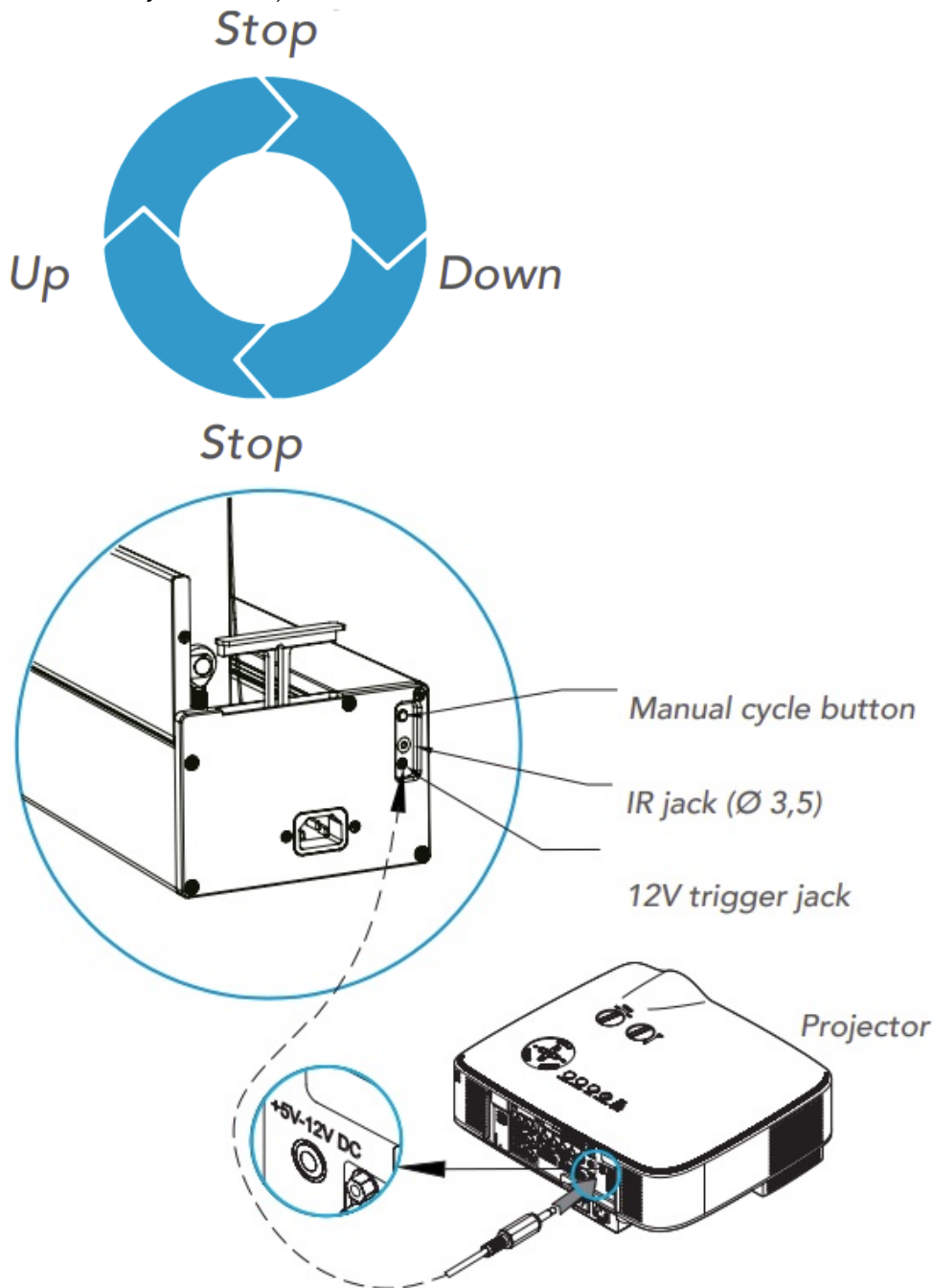
- A. Manual cycle button**
- B. 12V trigger control**
- C. RF remote control**

### **A. Manual cycle button**

The manual cycle button is set on the end cover of the power supply side of the shell. Pressing the button will control the screen to rise, stop, fall, stop, and rise repeatedly. Continuously loop.

#### B. 12V trigger control

with a 12V trigger cable; the screen synchronizes the opening and closing of the projector (that is, when the projector is turned on, the screen is automatically turned on; when the projector is turned off, the screen is automatically turned off)



#### C. RF remote control

- Press the up button, the door opens first, and the fabric rises;
- Press the stop button, the door or fabric will pause
- Press the down button, the fabric rolls back, and the decorative door is closed.
- Jog the up key and down key, the fabric moves up or down;

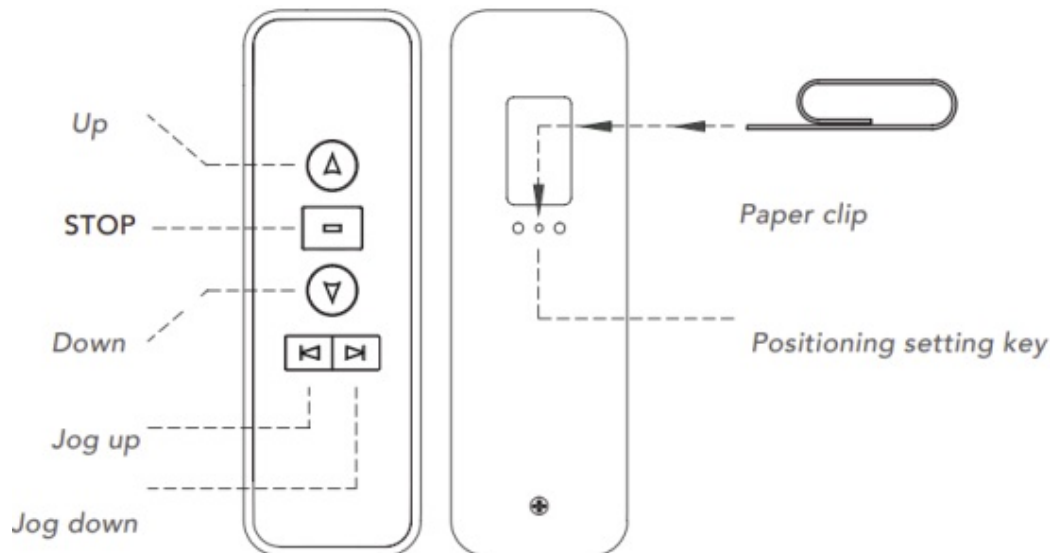
Usually used in electronic stroke positioning settings.



Intelligent electronic itinerary positioning (this product can realize the screen unfolding itinerary setting through the remote control).

Operation method (stretch a paperclip into the hole, press the positioning setting button on the back of the remote control): Screen unfolding stroke setting: positioning setting key (lighted) -> remote control up and down to the desired position -> stop -> positioning setting key (light off) -> location record successful -> positioning setting key (light off) -> location record successful

 Battery is not provided. Remote needs 2 x button cell CR2032

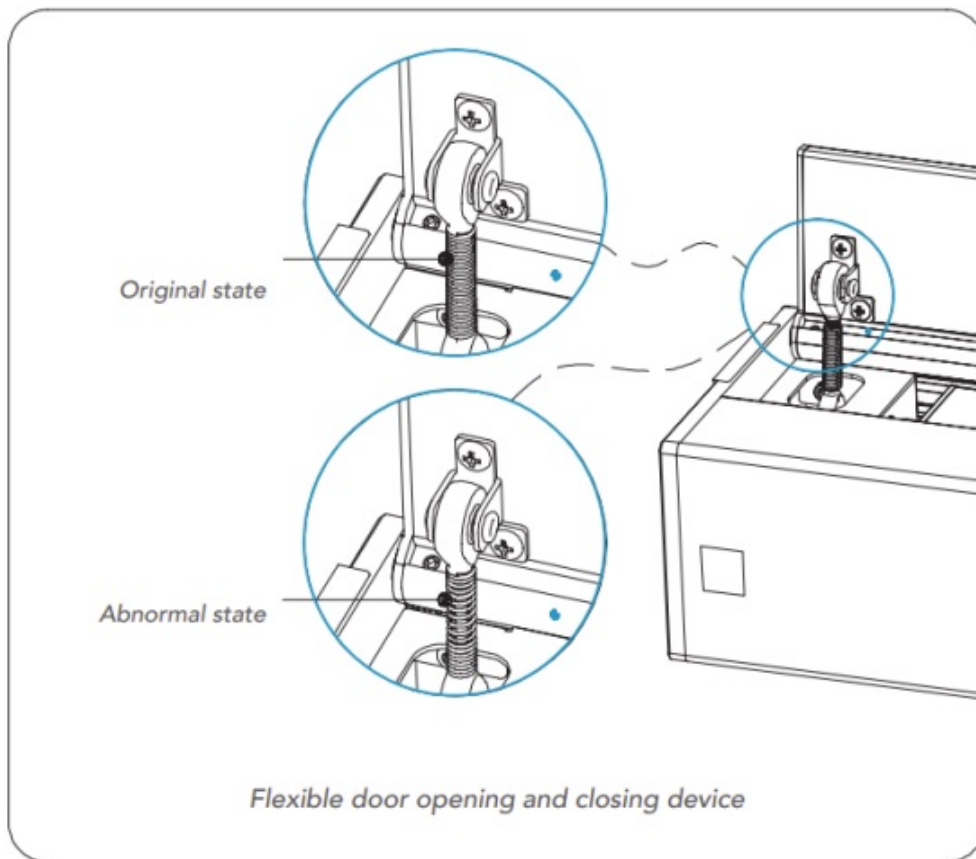


## DOOR ANTI-PINCH FUNCTION

The door of this product is equipped with a flexible door opening and closing device, which can protect hands or objects from accidentally extending into the screen when closing the door.

**Abnormal situation :** If the elastic protection device is triggered when the door is closed, the tension spring may be stretched, and the opening and closing angle of the door will change, making it impossible to reset.

**Solution :** Remove the two  $\varnothing 4 \times 8$  self-tapping screws connecting the door, turn the tension spring counterclockwise to the correct rebound, and restore the parts to the original state.



## FABRIC CLEANING

*Ultra-short throw anti-light screen cleaning : (Do not use a rag to wipe!)*

- Using soft brush(in parts box), lightly brush horizontally along the texture of the screen to remove the dust or fine particles on it.
- For light-colored smudges that do not affect the projection, no need to deal with them; if it affects the viewing effect, it can be removed with a sticky tape without residue.

*Ordinary regular throw fabric cleaning method*

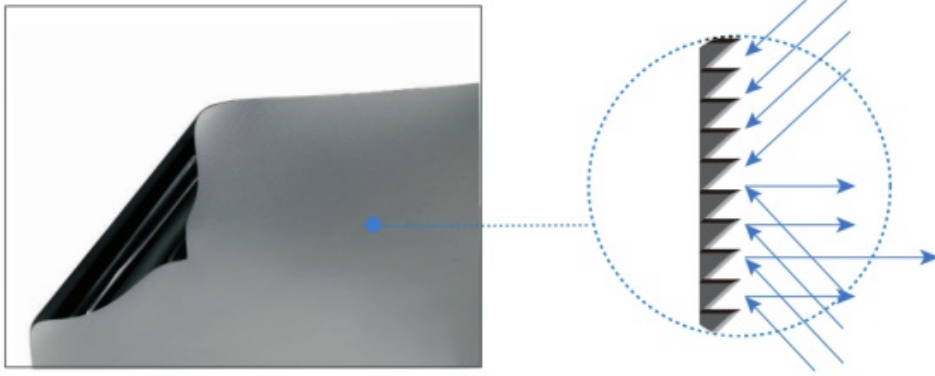
*Use clean water or mild detergent to gently wipe the stains on the surface of the fabric(do not use corrosive detergents), and then retract the fabric after air-drying or absorbing moisture*

**Voltages & Frequencies** : 110V/60Hz or 220V/50Hz (Actual voltage shall be subject to the electrical label shown on the product).

**Wireless remote control (F)** : Voltage 3V, using battery CR2032X2, transmitting frequency; 868MHz, effective control distance is about 15 meters.

2) The screen adopts the splicing process, and the splicing line has a certain curvature due to the source of upper and lower tension, which does not affect the actual projected picture. which is a normal phenomenon.

3) **Fabric surface flatness: Lower black drop perfect range** : 300 – 400 mm



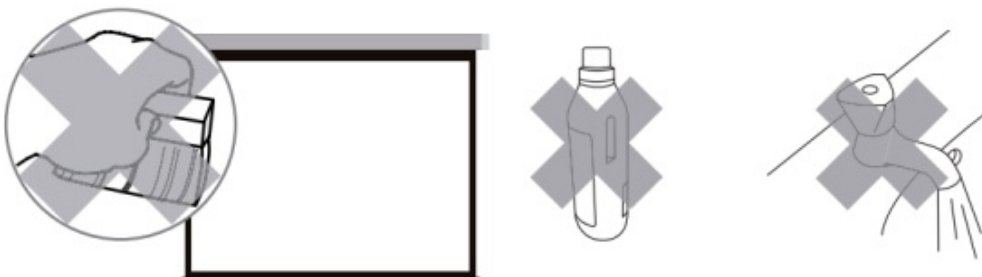
## **PRECAUTION FOR USE**

*Important operating considerations Setting up is very easy but has to be done carefully to ensure its durability. Before first use, always position your screen horizontally on a stable and flat surface.*

### **Warning:**

- Don't hang or put anything on the top of the screen case when your screen when your screen is unrolled.
- Don't put your finger inside the case when you retract the screen fabric back to the case.
- **Dust and scratches will lower the image of projection quality. Please pay particular attention to the following points:**
  - a. Do not touch the screen surface with your hand.
  - b. Do not draw on the screen surface.
  - c. Do not cruff or scratch the screen with hard sharp items subject to cause damage.
  - d. Never use chemicals to clean the screen surface.
- Make sure there is nothing on the screen before you retract it into the case.
- To remove dust on the cloth, use a dry and softaired brush and rub it delicately.
- Close the screen to protect the cloth.

## **CLEAN SOFTLY**



## **LIMITED WARRANTY:**

*All LUMENE produds carry a two-year limited warranty period when purchased from LUMENE, a LUMENE distributor or a LUMENE authorized retailer. This warranty covers all defects in materials and workmanship in the product manufactured by LUMENE.*

### **Warranty limitation and exclusions:**

*This warranty covers only the products purchased from LUMENE or a LUMENE authorized retailer or distributor and runs for a two-year period from the date of the purchase by the first end-user. Except in the following cases,*

*this warranty covers only material or manufacturing defect. This limited warranty is subject to the following exceptions:*

- *the serial number has been removed, modified or made illegible.*
- *the defects or damage result from use of the products in a manner that is not normal or customary; improper operation or misuse; accident or neglect such as dropping the products onto hard surfaces; contact with water, rain, extreme humidity; contact with sand, dirt or the like; or contact with extreme heat, or spills of food or liquid.*
- *physical damage to the surface of the product, including scratches, cracks or other damage.*
- *non respect of the instructions supplied with the product.*
- *damage due to the shipment of the product (claims have to be addressed to the carrier).*
- *someone other than LUMENE or its authorized service centers attempts to maintain, alter, modify or service the product in any way.*
- *any other damage due to the lack of technical knowledge or experience of the user without any link with defects of the product.*

*Any of these voids the warranty.*

***To be eligible for limited warranty coverage:***

*The limited warranty applies only to the first end-user. Any person exercising a claim under this limited warranty must show the proof of the date of purchase, such as the sales receipt or invoice, and that the product was purchased new.*

*The warranty is strictly limited to the country of the original purchase.*

***Warranty related expenses:***

*LUMENE will take charge of all the expenses on parts and labor related to the repair or the replacement of the products. The expenses related to the shipping and insurance fees will be shared as described below.*

***To obtain warranty service:***

***During the warranty period, to exercise the limited warranty, the purchaser must first contact:***

1. *the original place of purchase,*
2. *the LUMENE local distributor,*
3. *LUMENE.*

*The warranty service for this device is limited to the country of original purchase.*

*You will receive instructions on how to ship the product to the nearest designated LUMENE authorized Service Center. The product must also be packed in its original packaging or a similar package insuring an equal degree of protection. You must ship it with freight, duties and insurance prepaid.*

*Regardless of where you are instructed to return the product, you must always include:*

- a) a copy of your invoice, bill of sale or other comparable proof of purchase.*
- b) a written description of the problem.*
- c) the name and location of the place of purchase and, most importantly.*
- d) your address and telephone number.*

*Always retain your original proof of purchase. Do not send any product back to a service center before prior agreement. Upon receipt of the product, LUMENE or its authorized service center will check the product and will ship you a repaired or replacement product, freight and insurance expenses prepaid. If additional information is required, please contact your retailer or the LUMENE local distributor.*


***Limitation of liability:***

*Except where these dispositions are inapplicable or unlawful to state laws or other jurisdiction rights: For any defective product, LUMENE sole liability is to repair or replace the product. By no means no event shall LUMENE be liable, whether in contract or tort (including negligence) for damages in excess of the purchase price of the product, or for any indirect, incidental, special or consequential damage of any kind or to any other products, or loss of revenue or profits, loss of business, or other financial loss arising out of or in connection with the ability or inability to use the product, to the full extent these damages may be disclaimed by law. Any litigation, which cannot be regulated by way of preliminary conciliation and relating to the interpretation or the execution of this Warranty and the obligations herein contained will be distinct definitively, according to the rules of conciliation and arbitration of the International Chamber of Commerce of Paris, France, by one or more referees named in accordance with its rules. The applicable law will be the French one.*

**Update:** 06/11/2024  
[www.lumene-screens.com](http://www.lumene-screens.com)



## Documents / Resources

	<p><a href="#">LUMENE 200CEBLT ExtraBright LT Motorized Floor Screen</a> [pdf] User Manual 2030x1150, EDEN-200CEBLT, 200CEBLT ExtraBright LT Motorized Floor Screen, 200CEBLT, ExtraBright LT Motorized Floor Screen, Motorized Floor Screen, Floor Screen, Screen</p>
--	--

## References

-  [Lumene - Écrans de projection home cinéma haute qualité](#)
- [User Manual](#)

### Manuals+ Privacy Policy

This website is an independent publication and is neither affiliated with nor endorsed by any of the trademark owners. The "Bluetooth®" word mark and logos are registered trademarks owned by Bluetooth SIG, Inc. The "Wi-Fi®" word mark and logos are registered trademarks owned by the Wi-Fi Alliance. Any use of these marks on this website does not imply any affiliation with or endorsement.