



# LUMENA Sol Icon Professional Two Sided PIR Solar Path Light User Manual

[Home](#) » [LUMENA](#) » LUMENA Sol Icon Professional Two Sided PIR Solar Path Light User Manual 

## Contents

- [1 LUMENA Sol Icon Professional Two Sided PIR Solar Path Light](#)
- [2 SPECIFICATIONS](#)
- [3 WARNINGS](#)
- [4 CLEANING & MAINTENANCE](#)
- [5 RETURNS](#)
- [6 SOL-ICON TECHNOLOGY](#)
- [7 INSTALLATION](#)
- [8 SURFACE MOUNT – Expanding Anchor Bolts](#)
- [9 GROUND SPIKE](#)
- [10 SETTINGS](#)
- [11 STORAGE](#)
- [12 Documents / Resources](#)
  - [12.1 References](#)
- [13 Related Posts](#)

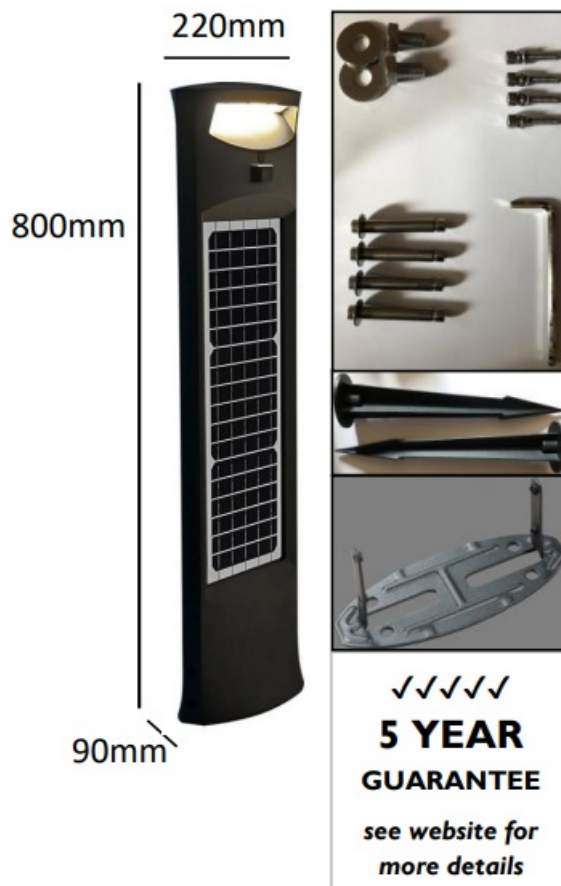


**LUMENA Sol Icon Professional Two Sided PIR Solar Path Light**



## SPECIFICATIONS

- **Wattage:** 20W
- **Lamp:** In-built SMD 3030 LED 40 pcs
- **Colour Temperature:** 6000K (Daylight White) / 3000K (Warm White)
- **Lumen Output:** 2000 lm (1000 lm per side)
- **LED Life Expectancy:** up to 50,000 hours
- **Sensor:** Light / Charge Sensor / 2 x PIR Sensors (1 per side)
- **Sensor Detection:** 160° angle, 2-8m distance
- **IP Rating:** IP65
- **IK Rating:** IK08
- **Battery Type:** Lithium 26650 – LiFePO4 6.4v/6000mAh/38.4wH (replaceable – 5yr life)
- **Battery Charge Time:** 10 hrs full sunshine (approx.)
- **Max Illumination Time at Full Charge:** Up to 4 nights (PIR mode)
- **Illumination Area:** Over 3m in all directions
- **Solar Panel:** 9v / 3.5W Monocrystalline Solar Panel (11Wp front + 9Wp back) – 20yr life
- **Materials:** Die Cast Aluminium & Tempered Glass
- **Weight:** 4.5KG (approx.) – excludes mounting accessories
- **Mounting:** Internal Mounting Base + Ground spikes
- **Working Temperature:** –20°C ~ 60°C
- **Included:** Solar Light, Internal Surface Mount + 4 Bolts, Washers & Spring Washers 2x Ground Spikes with Bolts/Washers, 4x Anchor Bolts, Allen Key, Instructions



## WARNINGS

- If a fitting is found to be damaged, cease use immediately.
- The unit may get warm whilst on for a period of time.
- Always take care when installing your solar light.
- Fitting must be mounted to a solid surface or using relevant anchor bolts / J-Bolts
- This Solar Light will not charge correctly if the panel is behind glass or artificial light is used.
- Ensure the waterproof bung is in place at all times, other than when turning the unit on.
- Due to temperature difference in and outside the fitting, condensation may be present internally but will not affect use.

## CLEANING & MAINTENANCE

Occasional cleaning and care is recommended for this product. Wipe with a soft, slightly damp cloth to remove any surface dirt. To maintain efficiency, specifically clean the solar panel and LED on a regular basis. Also, keep the solar panel free of debris and snow to prevent reduced battery life or malfunction. Do not use abrasive cleaners or a lot of water as this could damage the fitting. Please refer to our website for more information on the best way to clean different materials.

## RETURNS

If purchased from a 3rd party, please contact your supplier. If purchased direct, contact us by phone or email:

Lumena Lights Ltd, Centre 33 Long March, Daventry, NN11 4NR Tel: +44 1327 871161 **Email:**  
[sales@lumenalights.com](mailto:sales@lumenalights.com)

**Our full returns policy is available on our website.**

Waste Electrical Products should not be disposed of with household waste. Please check with your local authority or contact us for more information. Please recycle packaging whenever possible.

Producer Registration Number: WEE/KC3440XY / BPRN0843

Full product range & more information:

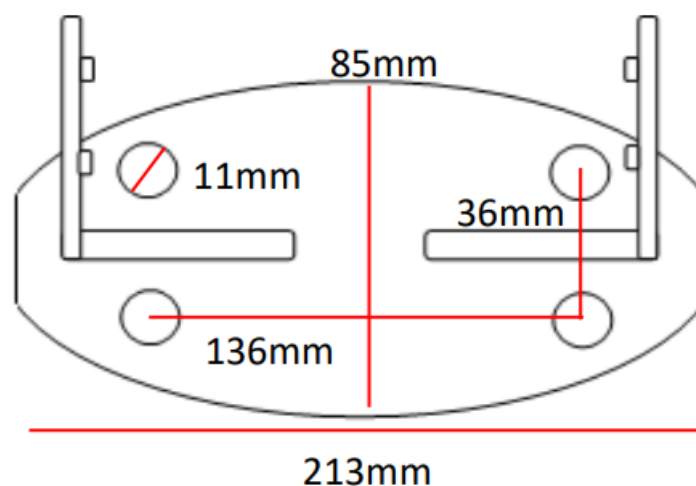
## **SOL-ICON TECHNOLOGY**

The Sol-Icon is a highly efficient solar light with high capacity LiFePO4 Lithium batteries and fast charging Monocrystalline solar panels. This means that even on partially cloudy and rainy days, it will re-charge efficiently. The high battery capacity gives enough power for up to 4 nights, even when there is little light during the day. The high lumen light output is bright enough to illuminate long driveways and paths, with single or double sided illumination, plus PIR, making them safe to navigate at night.

## **INSTALLATION**

Recommended spacing for mounting multiple path lights is 5-6m apart. Closer spacing / staggering will result in a more intense light.

Location – It is important that the installation location is carefully considered, avoiding shady areas. Ensure there are no other lights which could interfere with the sensors, imitating daylight.

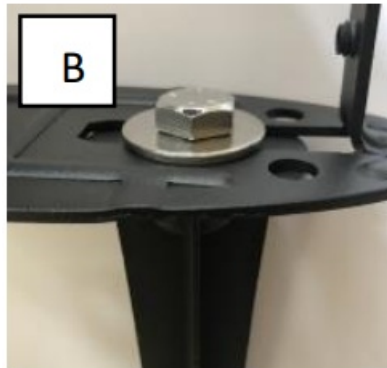
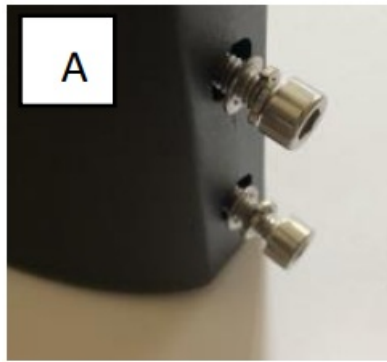


### **SURFACE MOUNT – Expanding Anchor Bolts**

1. To surface mount, use the base to mark the 4 x mounting holes on the mounting surface in the correct position.
2. Remove the mount and drill out the 4 holes (10mm) at a depth of 60mm.
3. Insert the anchor bolt nut (dome up) and sleeve in to the predrilled hole.
4. Replace the mount, lining up the 4 x holes and secure in place with the anchor bolt and washer, tightening securely to expand the bolts.
5. Place the path light over the mount and secure in place with the socket screws supplied (2 on each side)

### **GROUND SPIKE**

1. Attach the two ground spikes to the mount via the two centre slots using the 2 x large bolts and washers (B)
2. Dampen the ground to soften and securely push the mount into place.
3. Place the path light over the mount and secure in place with the socket screws supplied (A)



**ALTERNATIVE MOUNTING:** For root mounting, follow the surface mount steps but use J-Bolts rather than expanding anchor bolts (sold separately). For mounting on wood, replace with wood screws and washers

## SETTINGS

To select mode, press the green power/mode button on the relevant side(s) the total number of times corresponding with the mode numbers below. Mode selection continues in a cycle; for example, to turn off after a period of time is mode 1, press the button twice. From mode two, the button would only need to be pressed once. When PIR (1) or constant light (2) modes are selected, the light will flash on for 2-3 seconds which will turn off again if during daylight. For off, there will be no illumination.



1. PIR Mode – Full brightness when PIR triggered, then returns to 15% brightness after 20 seconds of no movement
2. Constant Light (dusk to dawn) – Constant illumination at 50% brightness
3. Off

## NOTE

- Each side of the path light is controlled by its own power/mode button and PIR sensor. The solar panel is

double sided which will charge the sole battery, powering both sets of LEDs.

- There will be a 1-5 second delay between turning the solar light on, and the bollard illuminating. In daylight, the light will turn back off within a few seconds, in darkness it will remain on and follow the selected cycle.

### **IMPORTANT – SOLAR BOLLARD MUST BE TURNED ON AT ALL TIMES AFTER INSTALLATION**


Solar bollard will only charge when a mode is selected / ON position.

## **STORAGE**

When storing the bollard, be sure to turn the bollard to the off position by following the above steps (check by covering and uncovering the solar panel). Maximum 6 months storage when fully charged – recharge will be required periodically to prevent damage to battery over long periods of time.

Full product range & more information: [www.lumenalights.com](http://www.lumenalights.com)

## **Documents / Resources**

	<p><a href="#">LUMENA Sol Icon Professional Two Sided PIR Solar Path Light</a> [pdf] User Manual Sol Icon Professional Two Sided PIR Solar Path Light, Sol Icon Solar Path Light, Professional Two Sided PIR Solar Path Light, Two Sided PIR Solar Path Light, Professional PIR Solar Path Light, PIR Solar Path Light, Solar Path Light, PIR Path Light, Path Light, Light</p>
---	---

## **References**

- [🌱 Low Voltage Garden Lights, Outdoor Lighting & Solar | Lumena Lights](#)