



## LUMENA Securbol Adjustable 800mm Radiata Pine Solar Path Light with PIR Sensor User Manual

[Home](#) » [LUMENA](#) » LUMENA Securbol Adjustable 800mm Radiata Pine Solar Path Light with PIR Sensor User Manual 

LUMENA Securbol Adjustable 800mm Radiata Pine Solar Path Light with PIR Sensor User Manual



THANK YOU FOR YOUR PURCHASE PLEASE READ THESE INSTRUCTIONS CAREFULLY PRIOR TO



### WARNINGS

- If a fitting is found to be damaged, cease use immediately.
- The unit may get warm whilst on for a period of time.
- Always take care when installing your solar light.
- Ensure the fitting is mounted out of range of head height to avoid injury.
- Fitting must be installed as per the installation instructions or guarantee will be void.
- This Solar Light will not charge correctly if the panel is behind glass or artificial light is used.

#### Contents

- [1 CLEANING & MAINTENANCE](#)
- [2 RETURNS](#)
- [3 SECURBOL TECHNOLOGY](#)
- [4 INSTALLATION](#)
- [5 MODES / SETTINGS](#)
- [6 SPECIFICATIONS](#)
- [7 Support](#)
- [8 Documents / Resources](#)
  - [8.1 References](#)
- [9 Related Posts](#)

## CLEANING & MAINTENANCE

Occasional cleaning and care are recommended for this product. Wipe with a soft, slightly damp cloth to remove any surface dirt. To maintain efficiency, specifically clean the solar panel, LEDs and PIR on a regular basis. Also, keep the solar panel free of debris and snow to prevent reduced battery life or malfunction. Do not use abrasive cleaners or a lot of water as this could damage the fitting. Please refer to our website for more information on the best way to clean different materials.

## RETURNS

If purchased from a 3rd party, please contact your supplier. If purchased direct, contact us by phone or email: Lumena Lights Ltd, Centre 33 Long March, Daventry, NN11 4NR

**Tel:** +44 1327 871161 **Email:** [sales@lumenalights.com](mailto:sales@lumenalights.com)

Our full returns policy is available on our website.

Waste Electrical Products should not be disposed of with household waste. Please check with your local authority or contact us for more information. Please recycle packaging whenever possible.

Producer Registration Numbers: **WEE/KC3440XY / BPRN0843**

## SECURBOL TECHNOLOGY

The Securable is a highly efficient solar light with high capacity Lithium Ion batteries and a fast charging Polycrystalline solar panel.

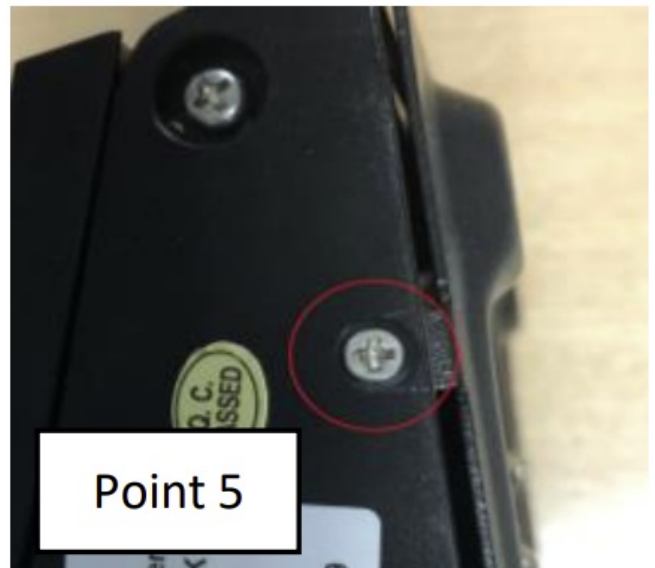
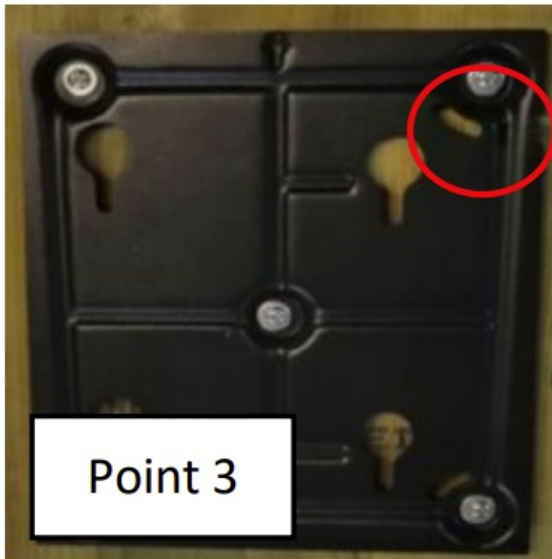
This means that even on cloudy and rainy days, it will re-charge efficiently. The high battery capacity gives enough power for up to 6 nights in standard PIR mode, even when there is little light during the day. The high lumen light output is bright enough to illuminate driveways and paths, making them safe to navigate at night.

## INSTALLATION

The Securbol is designed to be root-mounted into wet concrete or buried securely into compact earth. For extra stability, attach a large wood screw into two sides of the sleeper approximately 200mm from the base. These will act as anchors when set into wet concrete.

**Location** – It is important that the installation location is carefully considered, avoiding shady areas. The best position is south facing; however, the light can work facing in other directions, especially when in full sunshine. The PIR must face the direction in which the motion is to be detected. Ensure there is no other lights which could interfere with the Sensors, imitating daylight.

1. Prepare a mounting hole in the desired location to allow for a sleeper depth of at least 300-400mm (can vary depending on the required height above ground). Ensure the hole is at least 300mm x 50mm to accommodate the width of the sleeper (220mm x 40mm), or slightly more if anchors are attached (see above). TIP: Carry out placement check prior to final installation into wet concrete.
2. Mount the sleeper into the desired location using supports to hold the fitting upright. Concrete or earth must cover the anchor and at least 100mm above.
3. Remove small screw from side of mounting bracket attached to sleeper.
4. Line the solar light up with the 4 keyhole holes and then push the fitting downwards to fix in position.
5. Secure front of the light in position by replacing and fastening the side screw removed in point 3.
6. Adjust solar panel accordingly & select desired working mode.



## **MODES / SETTINGS**

The Securbol has 3 different settings / modes, as well as an override "OFF" mode. All modes will only function during darkness / dusk.



**ON / OFF** (previous memory)



**NOT IN USE**



**Constant Light PIR Mode** – 50% constant light from dusk for 5 hours / 30% battery, then switches to standard PIR mode.

**Wall wash PIR Mode** – Wall wash from dusk, main light illuminates at full brightness when PIR is triggered for approx. 20 seconds.

**Standard PIR Mode** – Light remains off until PIR is triggered by movement, then full brightness of Main Light for approx. 20 seconds.

Before use, remove the battery release tab from the remote control.

For first use, press the “ON” button on the solar light control panel to activate the light and remote.

To switch between modes, select the relevant button for the desired setting after installation. When a new mode is selected successfully, the fitting will flash once.

Modes can be changed via the remote control, up to 10m, or on the fitting. Lift the solar panel to locate the control panel.

Remote control can control more than one fitting in range.

To adjust the solar panel position, slightly loosen the top cross-head screws on both sides of the fitting. Adjust panel to desired position in direct sunlight and retighten screws to secure. Adjust to approx. 45 degrees for maximum charge effectiveness.

## **SPECIFICATIONS**

- **Wattage:** 7W
- **Lamp:** In-built LED SMD 2835 40 + 10pcs (100° Beam Angle)
- **Colour Temperature:** Main = 6000K (Daylight) & Wall Wash = 3000K (Warm)
- **Lumen Output:** 700 lm
- **LED Life Expectancy:** up to 35,000 hours
- **Sensor:** PIR (Motion Sensor) + Photocell (Dusk to Dawn)
- **IP Rating:** IP65
- **PIR Detection Range:** up to 2m 120° beam angle



- **PIR Sensor Delay Time:** approx. 20 seconds
- **Battery Type:** Lithium Ion 18650 3.7v/5400mAh (replaceable)
- **Battery Charge Time:** up to 12 hours (approx.)
- **Solar Panel:** 7W = 3.7Wp Polycrystalline Silicon – Adjustable by 70°
- **Max Illumination Time at Full Charge:** 20hrs > 6 nights (varies by function)
- **Materials:** ABS, Polycarbonate, Glass Solar Panel, Radiata Pine (pressure treated)
- **Weight:** 9KG (approx.)
- **Mounting:** Root Mounting
- **Path Light Height:** 1200mm (400mm to be buried under ground)

## Support

Full product range & more information: [www.lumenalights.com](http://www.lumenalights.com)



## Documents / Resources

	<p><a href="#">LUMENA Securbol Adjustable 800mm Radiata Pine Solar Path Light with PIR Sensor</a> [pdf]</p> <p>User Manual</p> <p>Securbol Adjustable 800mm Radiata Pine Solar Path Light with PIR Sensor, Securbol, Adjustable 800mm Radiata Pine Solar Path Light with PIR Sensor, Adjustable 800mm Radiata Pine Solar Path Light, Pine Solar Path Light, Solar Path Light, Path Light, Light</p>
--	---

## References

- [Low Voltage Garden Lights, Outdoor Lighting & Solar | Lumena Lights](#)