



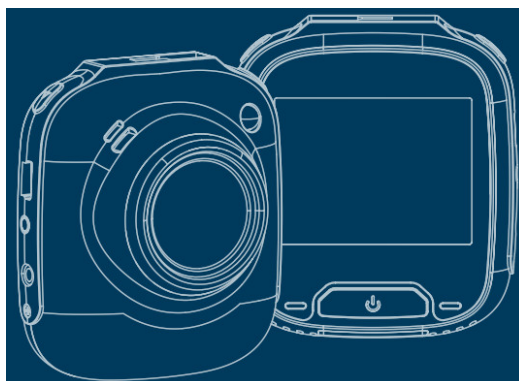
## LUMAX C6 Dashcam User Guide

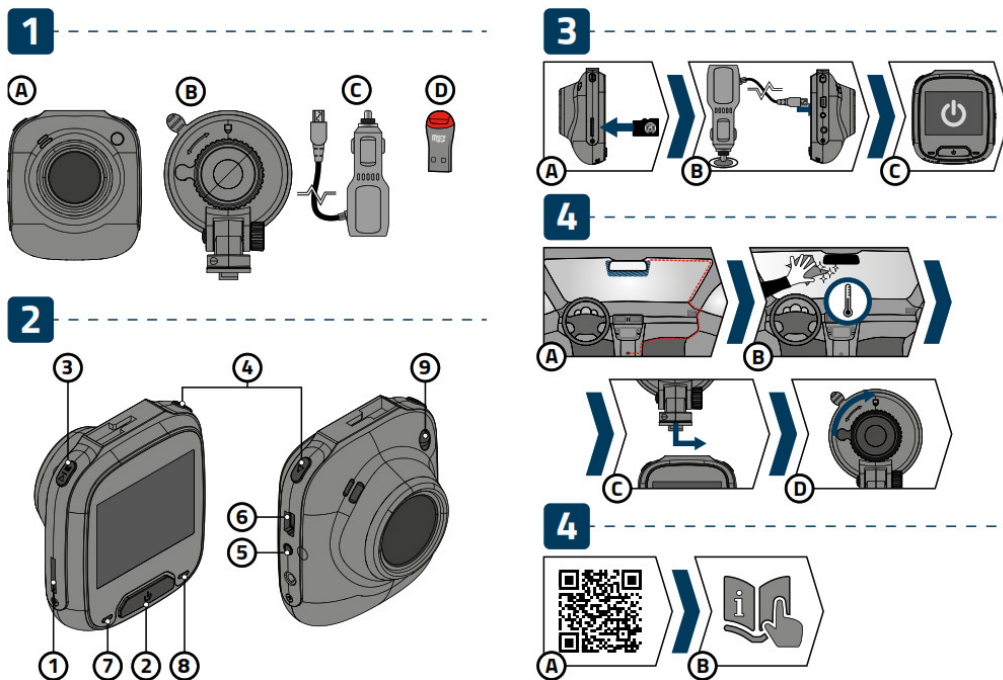
[Home](#) » [LUMAX](#) » LUMAX C6 Dashcam User Guide

# LUMAX

# C6

### QUICK START GUIDE





## Contents [ [hide](#) ]

- 1 PACKAGE CONTENTS
- 2 GETTING TO KNOW YOUR CAMERA /CONTROLS
- 3 BASIC SETTINGS AND FUNCTIONS
- 4 PLACEMENT ON GLASS / SAFETY PRECAUTIONS
- 5 ADDITIONAL INFORMATION
- 6 Documents / Resources
- 7 Related Posts

## PACKAGE CONTENTS

- A. LAMAX C6 dashcam
- B. Suction cup windscreen mount
- C. Ignition power cord
- D. MicroSD/USB adapter for transferring files to PC

## GETTING TO KNOW YOUR CAMERA /CONTROLS

- 1. Memory card slot
- 2. POWER/OK button
- 3. UP button
- 4. DOWN button
- 5. RESET button
- 6. Mini USB port
- 7. LED camera power indicator  
(red/lit = camera plugged in)
- 8. LED recording indicator  
(blue/lit = camera on, flashing = recording)
- 9. LED light

## VIDEO MODE

Power / OK button	Press	Start / Stop recording
	Hold	Turn off camera
UP button	Press	Turn off / on Parking mode when recording
	Hold	Enter menu
DOWN button	Press	Mute / Unmute audio recording
	Hold	Change Video mode to Photo mode / File protect when recording

## PHOTO MODE

Power / OK button	Press	Take photo
	Hold	Turn off camera
UP button	Press	Enter menu
DOWN button	Press	Mute / Unmute audio recording
	Hold	Change Photo mode to Playback mode

## PLAYBACK MODE

Power / OK button	Press	Start / Pause playback Stop fast playback
	Hold	Turn off camera
UP button	Press	Navigate between files Change video playback speed
	Hold	Enter recording management menu
DOWN button	Press	Navigate between files Change video playback speed
	Hold	Change mode to Video mode

## MENU

Power / OK button	Press	Confirm selection
	Hold	Turn off camera
UP button	Press	Navigate the menu
	Hold	Go to camera settings / In-camera settings exit the menu
DOWN button	Press	Navigate the menu
	Hold	Go to camera settings / In-camera settings exit the menu

#### ANY TIME

RESET	Press with paperclip	Restart camera
-------	----------------------	----------------

## BASIC SETTINGS AND FUNCTIONS

A. Insert the microSD card into the camera as shown (connectors toward the display).

- Use SD cards from reputable manufacturers of Class 10 and higher with a capacity of up to 32GB.
- Insert and remove card only when the camera is turned off.
- The first time you use the card, format it directly in the camera and repeat the formatting at least once a month to ensure that the camera works properly.

B. Insert the power cable into the ignition switch and connect it to the camera.

C. The camera is primarily intended to be always be connected to the power.

The dashcam turns on automatically and starts recording.

- For some vehicles, it is necessary to start the ignition first.

#### BASIC FUNCTIONS:

##### Loop recording

The camera automatically divides the recording into shorter video files and when the SD card is full, it starts overwriting the oldest unprotected files with new ones.

Thanks to this, you do not have to worry about there being enough free space on the SD card.

##### File protection

- To protect a file against being overwritten, lock it in Playback mode in the recording management menu or press the down arrow whilst recording.

#### **G- sensor**

- If the G-sensor detects an impact, it automatically protects the video being currently recorded against being overwritten.

Note: at high sensitivity settings and driving over uneven surfaces, files may become automatically protected leading to the SD card becoming full.

#### **Motion detection**

- The camera starts recording automatically when it detects movement in the lens' field of view. When the movement stops, it stops recording after about 1 minute.
- The function is used to monitor a parked vehicle, do not use it whilst driving.

#### **Parking mode**

- The camera starts recording automatically when it detects the vehicle vibrate. If the movement does not happen again, it will stop recording after about 30 seconds and turn off.

#### **LED light**

- Intended for use outside the vehicle, for example, for recording the scene after an accident.
- Do not use the LED light whilst driving.

### **PLACEMENT ON GLASS / SAFETY PRECAUTIONS**

A. The ideal place to mount the dashcam is the space between the windscreen and the rearview mirror so that it does not obstruct the driver's view.

B. Ensure that the glass at the point of attachment is clean and dry.

C. Attach the suction cup to the camera and then place it on the glass so that the camera has a good view.

D. Tighten the mount according to the lock icon on the holder.

- Do not operate the camera whilst driving.
- A windscreen coated with any kind of film and heated glass can reduce the quality of the recording.
- Do not expose the camera to extreme temperatures – especially do not leave it in direct sunlight for an extended period.
- Make sure that the legislation of the country where you operate the vehicle allows the use of dashcams.
- To prevent injuries, the camera must always be mounted whilst driving and must not block the path of safety features – especially airbags.

### **ADDITIONAL INFORMATION**

Find full instructions and firmware updates at

<http://www.lamax-electronics.com/lamax-c6>

Register your camera for the latest product information and other LAMAX news.

### **Documents / Resources**



## [LUMAX C6 Dashcam](#) [pdf] User Guide C6 Dashcam